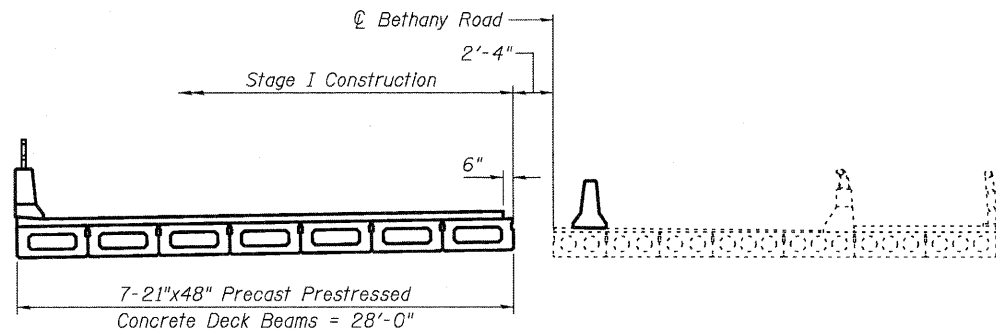
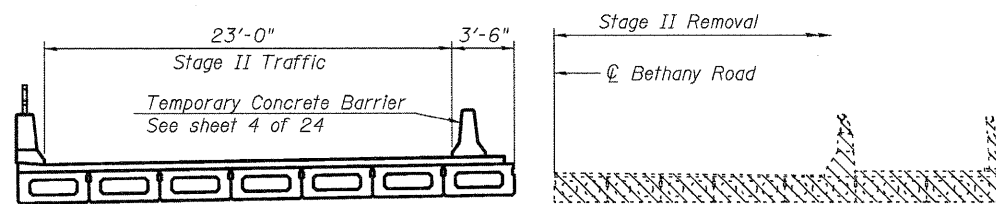


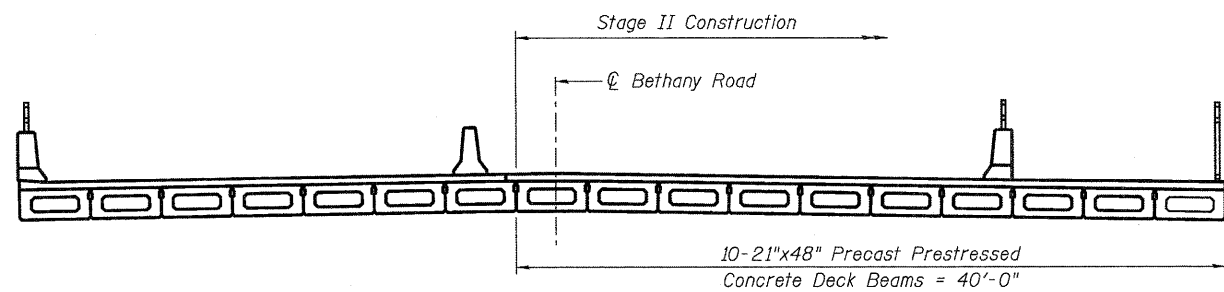
STAGE I REMOVAL & TRAFFIC



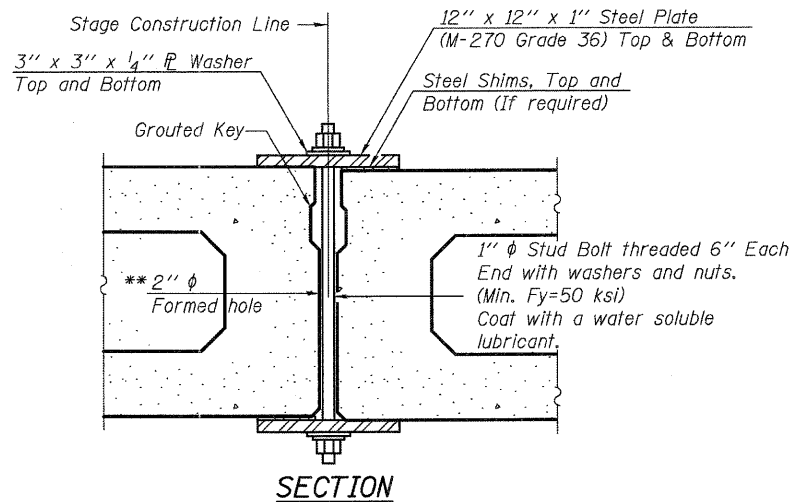
STAGE I CONSTRUCTION



STAGE II REMOVAL & TRAFFIC

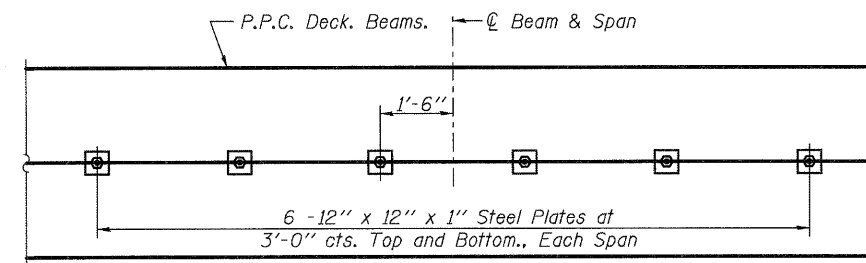


STAGE II CONSTRUCTION

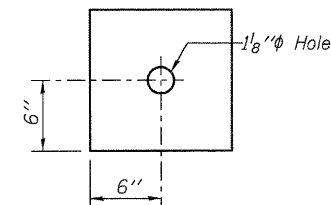


SECTION

Notes:
 All staging cross sections are looking North.
 Cross hatched area indicates Removal of Existing Structures.
 Plan dimensions and details relative to the existing structure have been taken from existing plans and are subject to nominal construction variations.
 See Roadway Plans for quantity of Temporary Concrete Barrier.
 See sheet 4 of 24 for details of Temporary Concrete Barrier.
 Removal of existing bridge rail and bituminous wearing surface is included in the cost of Removal of Existing Structures.
 If the Contractor chooses to alter the temporary cantilever sheet piling design requirements shown on the plans, a design submittal including plan details and calculations will be required for review and acceptance by the Engineer.



PLAN

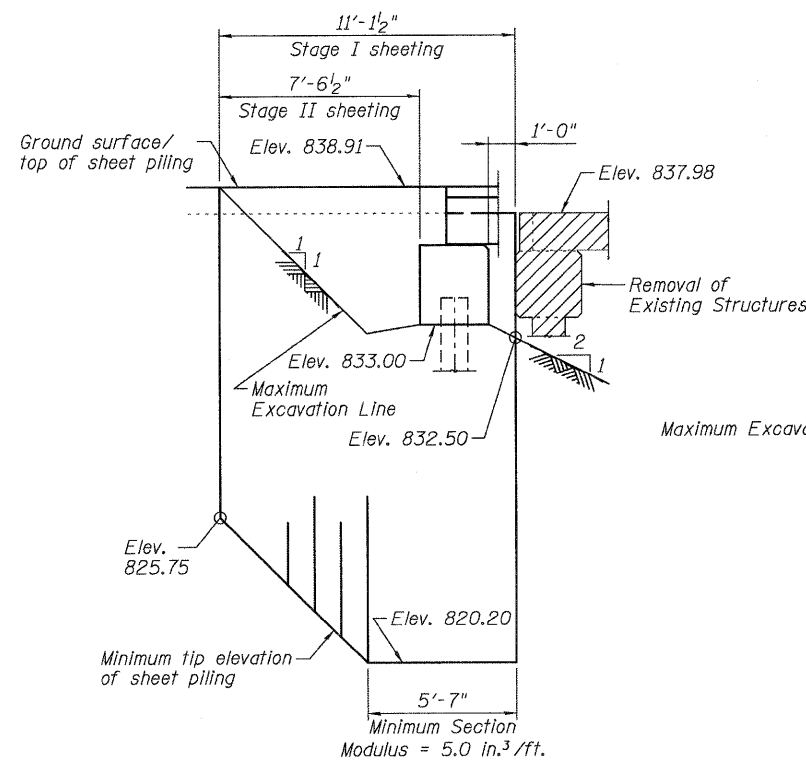


CLAMPING PLATE

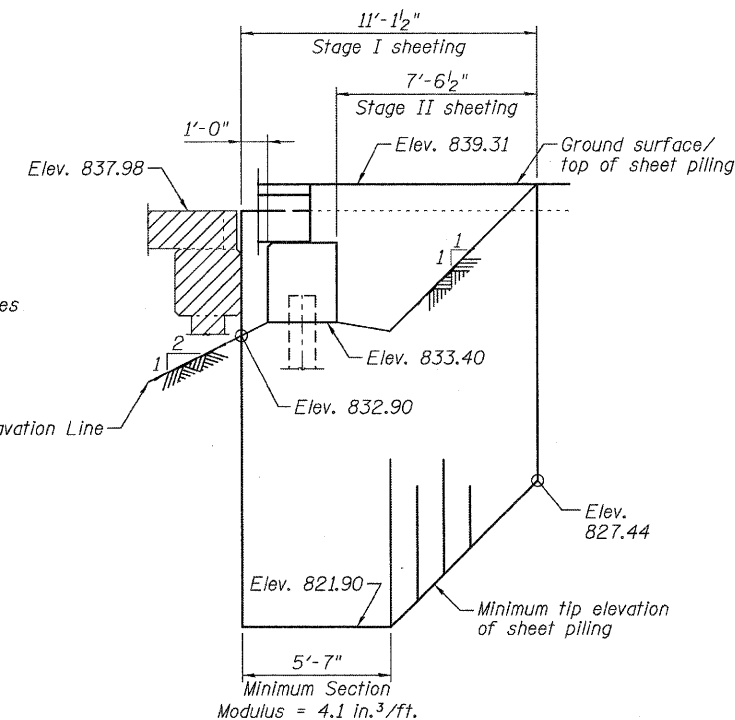
SHEAR KEY CLAMPING DETAILS AT STAGE CONST. JT.

Cost included with Precast Prestressed Concrete Deck Beams.
 See Stage Construction Details for traffic lanes.

*** Cast semicircular recesses in the sides of each beam adjacent to the stage construction line. These recesses should align to form a hole at the appropriate locations for the clamping device bolts.



TEMPORARY SHEET PILING AT WEST ABUT.



TEMPORARY SHEET PILING AT EAST ABUT.

FILE NAME = M:\Projects\2010\1008054 BethanyRd\Road\Structural\Draw\1015107-07191-003-StageConst.dwg

WBK
WILLS BURKE KELSEY ASSOCIATES LTD.
 119 West Main Street, Suite 201
 St. Charles, Illinois 60174
 (630) 443-7755

USER NAME = #USER#	DESIGNED - MLH	REVISED -
PLOT SCALE =	CHECKED - AEU	REVISED -
PLOT DATE = 7/6/2011	DRAWN - MLH	REVISED -
	CHECKED - AEU	REVISED -

**STATE OF ILLINOIS
 DEPARTMENT OF TRANSPORTATION**

**STAGE CONSTRUCTION DETAILS
 STRUCTURE NO. 019-6107**
 SHEET NO. 3 OF 24 SHEETS

F.A.U. RTE.	SECTION	COUNTY	TOTAL SHEETS	SHEET NO.
5355	04-00167-00-BR	DEKALB	88	49
FED. ROAD DIST. NO.			ILLINOIS FED. AID PROJECT	
			CONTRACT NO. 87491	