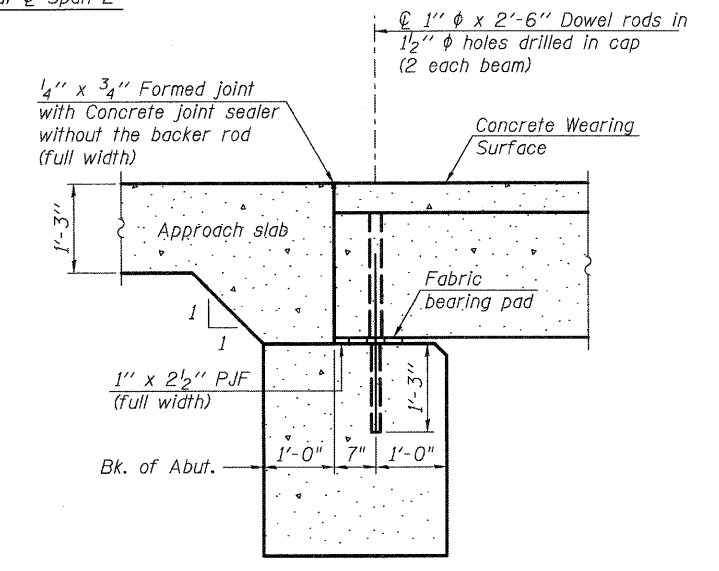


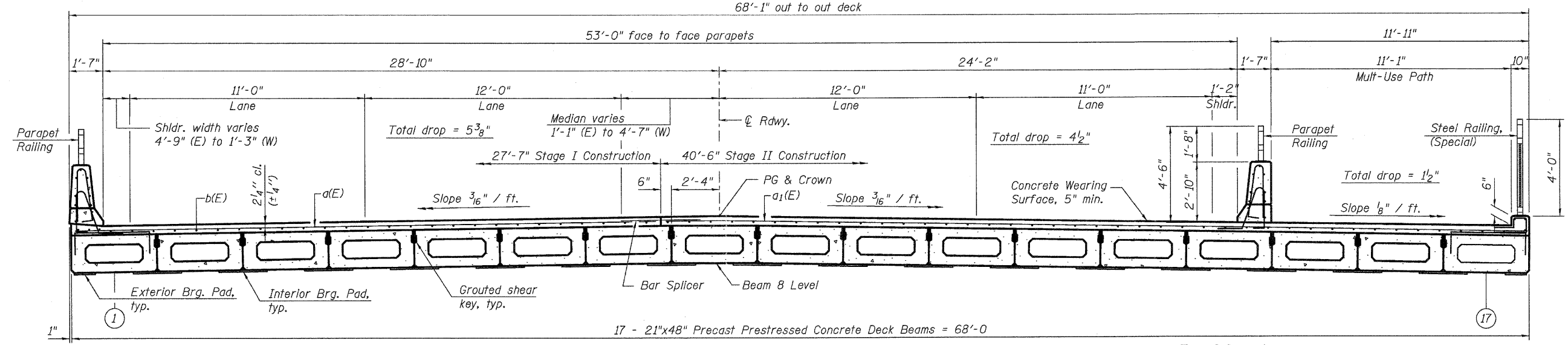
PARTIAL PLAN



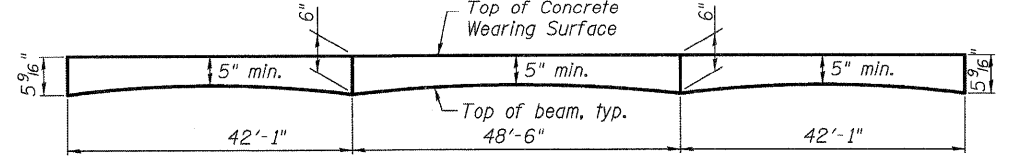
SECTION A-A

Notes:
 All concrete wearing surfaces shall be placed prior to casting a backwall and/or approach slab.
 See sheet 15 of 24 for fabric bearing pad details.

MINIMUM BAR LAP
 #4 bar = 2'-7"



CROSS SECTION
 (Looking East)



ANTICIPATED CONCRETE WEARING SURFACE PROFILE
 (For information only)

Notes:
 See sheets 8 and 9 of 24 for Superstructure Details and Bill of Material.
 Bars indicated thus 67 x 5-#4 etc. indicates 67 lines of bars with 5 lengths per line.
 See sheet 8 of 24 for Section B-B & C-C.

FILE NAME = K:\Projects\2011\090654_Berthegib\Lead\Structure.dgn 08/15/11 07:49:41 007-Super.dgn

WILLIS BURKE KELSEY ASSOCIATES LTD.
 119 West Main Street, Suite 201
 St. Charles, Illinois 60174
 (630) 443-7755

USER NAME = #USER#	DESIGNED - MLH	REVISED -
PLLOT SCALE =	CHECKED - AEU	REVISED -
PLLOT DATE = 7/6/2011	DRAWN - MLH	REVISED -
	CHECKED - AEU	REVISED -

STATE OF ILLINOIS
DEPARTMENT OF TRANSPORTATION

SUPERSTRUCTURE
STRUCTURE NO. 019-6107
 SHEET NO. 7 OF 24 SHEETS

F.A.U. RTE.	SECTION	COUNTY	TOTAL SHEETS	SHEET NO.
5355	04-00167-00-BR	DEKALB	88	53
CONTRACT NO. 87491				
FED. ROAD DIST. NO. ILLINOIS FED. AID PROJECT				