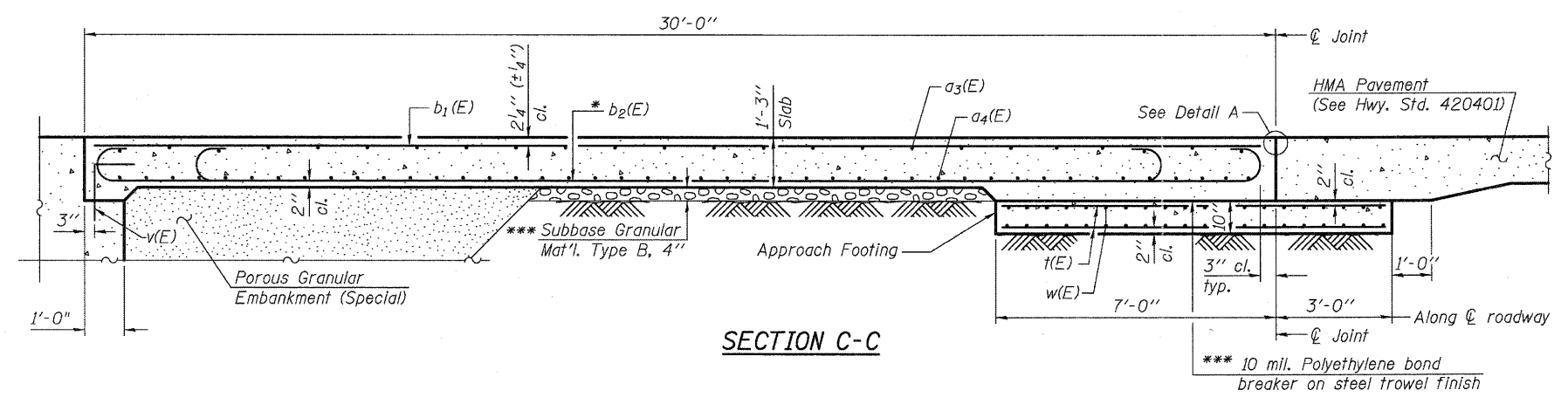
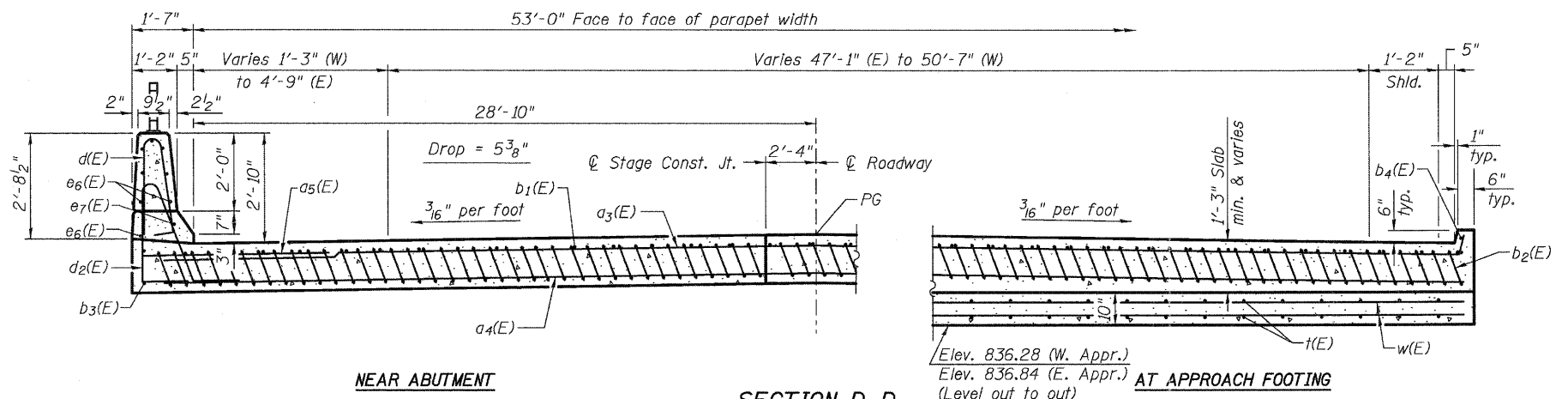


Notes:
 See sheet 10 of 24 for Detail A and View B-B.
 Approach slab and parapet concrete shall be paid for as Concrete Superstructure.
 Approach footing concrete shall be paid for as Concrete Structures.
 Reinforcement shall be paid for as Reinforcement Bars, Epoxy Coated.
 The approach footing maximum applied service bearing pressure (Qmax) = 2.0 ksf.
 For bar splicer details, see sheet 20 of 24.
 Cost of excavation for approach footing included with Concrete Structures.
 For Porous Granular Embankment (Special) and drainage treatment details, see sheet 2 of 24.
 For additional parapet details, see sheet 9 of 24.



SECTION C-C

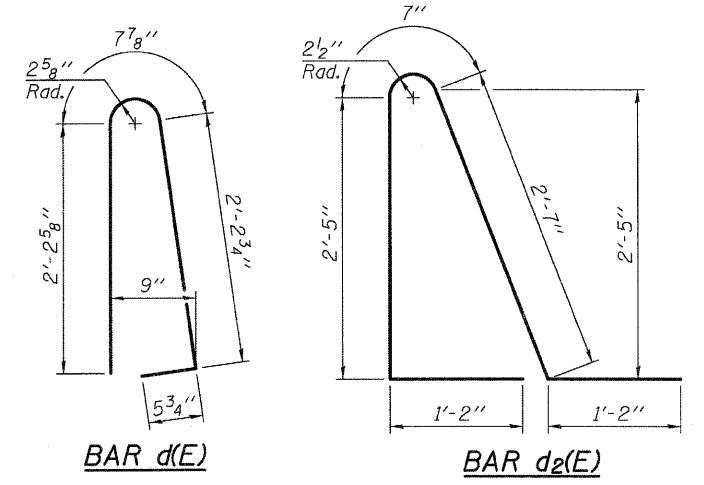


NEAR ABUTMENT

SECTION D-D

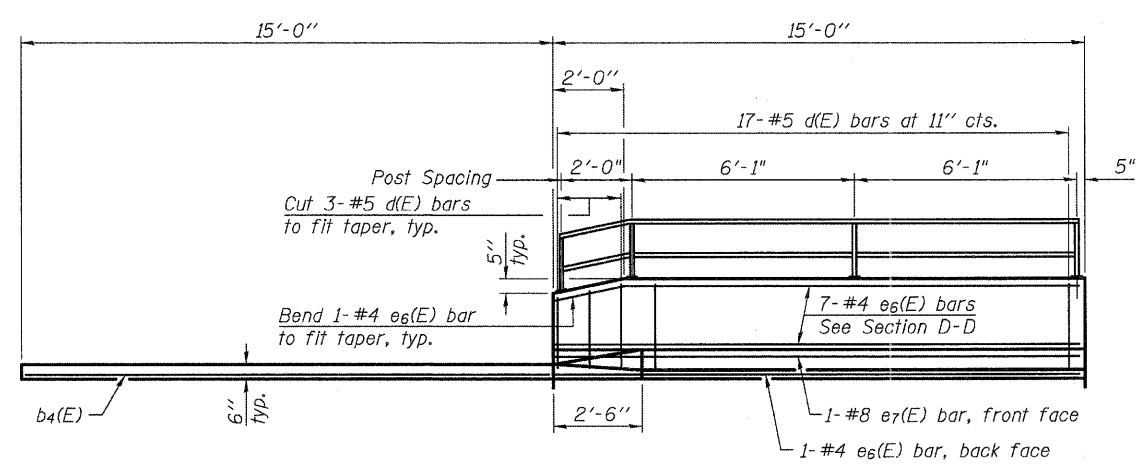
(See Plan for dimensions not shown)

AT APPROACH FOOTING

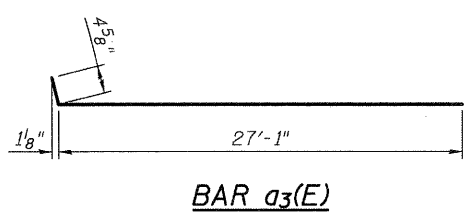


BAR d(E)

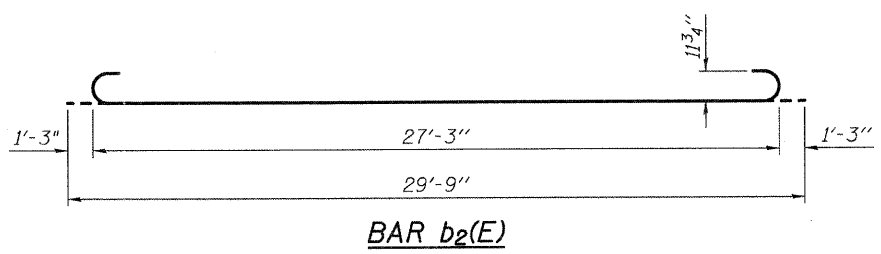
BAR d2(E)



VIEW E-E



BAR a3(E)



BAR b2(E)

* Tilt #9 b2(E) bars as required to maintain clearance.
 *** Cost included with Concrete Superstructure.

TWO APPROACHES
 BILL OF MATERIAL

Bar	No.	Size	Length	Shape
a3(E)	100	#4	27'-5"	U
a4(E)	184	#5	27'-2"	—
a5(E)	48	#6	6'-6"	—
b1(E)	88	#4	29'-8"	—
b2(E)	264	#9	29'-9"	U
b3(E)	4	#4	14'-8"	—
b4(E)	4	#4	14'-8"	—
d(E)	68	#5	5'-7"	U
d2(E)	68	#5	7'-11"	U
e6(E)	32	#4	14'-8"	—
e7(E)	4	#8	14'-8"	—
f(E)	224	#4	9'-8"	—
w(E)	160	#5	27'-3"	—
Concrete Superstructure			Cu. Yd.	168.5
Concrete Structures			Cu. Yd.	33.9
Reinforcement Bars, Epoxy Coated			Pound	43,460

(Sheet 2 of 2)

FILE NAME = M:\Projects\2010\1008054_Bethany\Road Structures\Drawings\101-BrIDGE\APP-SlabD1.dwg

WILLS BURKE KELSEY ASSOCIATES LTD.
 115 West Main Street, Suite 201
 St. Charles, Illinois 60174
 (630) 443-7755

USER NAME = #USER#	DESIGNED - MLH	REVISIONS -
PLOT SCALE =	CHECKED - AEU	REVISIONS -
PLOT DATE = 7/8/2011	DRAWN - MLH	REVISIONS -
	CHECKED - AEU	REVISIONS -

STATE OF ILLINOIS
 DEPARTMENT OF TRANSPORTATION

BRIDGE APPROACH SLAB DETAILS
 STRUCTURE NO. 019-6107
 SHEET NO. 11 OF 24 SHEETS

F.A.U. RTE. 5355	SECTION 04-00167-00-BR	COUNTY DEKALB	TOTAL SHEETS 88	SHEET NO. 57
FED. ROAD DIST. NO. ILLINOIS FED. AID PROJECT			CONTRACT NO. 87491	