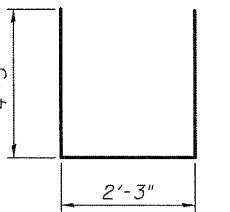


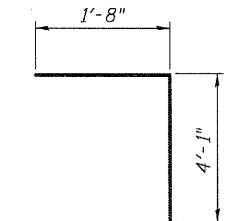
**ELEVATION**

**MINIMUM BAR LAP**  
#7 Bar = 5'-10"

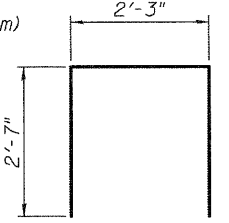
**BAR u1(E)**



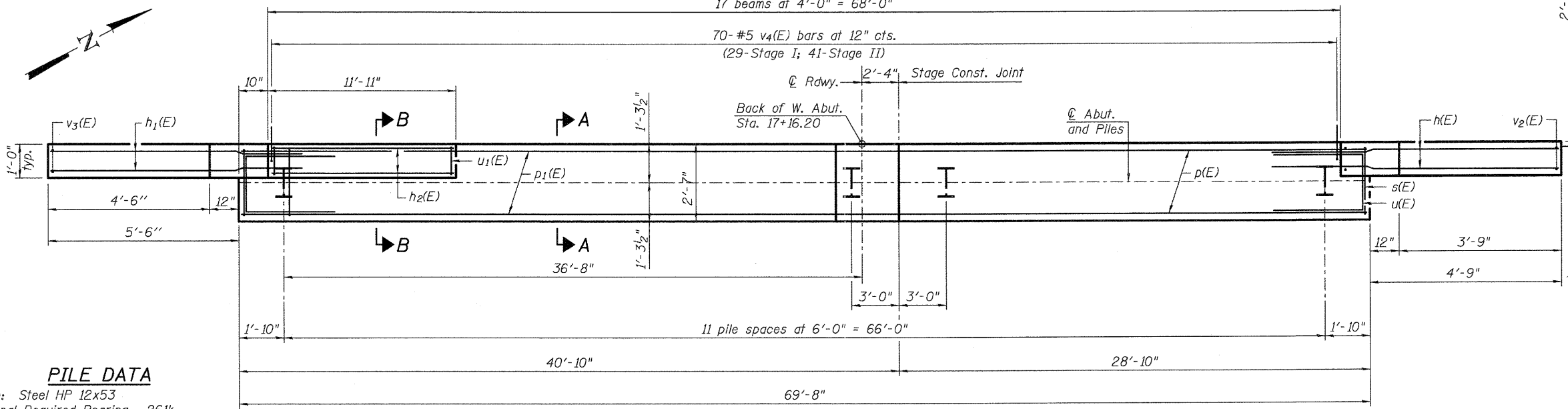
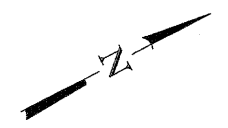
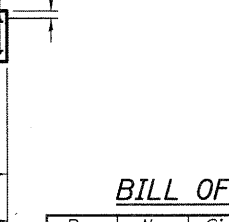
**BAR u(E)**



**BAR s(E)**



**BAR v4(E)**



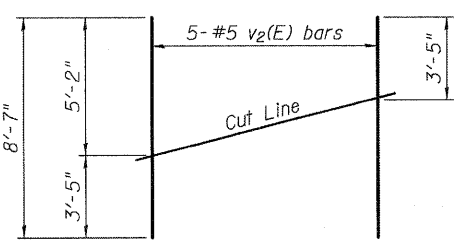
**PLAN**

**PILE DATA**

Type: Steel HP 12x53  
Nominal Required Bearing: 261k  
Factored Resistance Available: 143k  
Est. Length: 34'  
No. Production Piles: 11  
No. Test Piles: 1

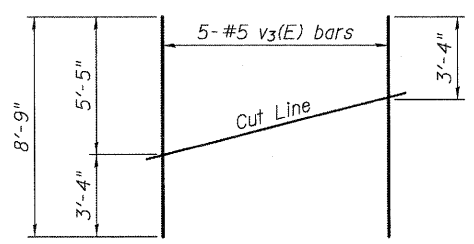
**BILL OF MATERIAL**

Bar	No.	Size	Length	Shape
h(E)	14	#5	9'-5"	—
h1(E)	16	#5	10'-4"	—
h2(E)	4	#5	11'-7"	—
p(E)	10	#7	28'-6"	—
p1(E)	20	#7	23'-2"	—
s(E)	144	#5	7'-5"	□
u(E)	8	#6	11'-1"	□
u1(E)	13	#5	6'-8"	□
v(E)	4	#5	5'-3"	—
v1(E)	4	#5	5'-7"	—
v2(E)	5	#5	8'-7"	—
v3(E)	5	#5	8'-9"	—
v4(E)	70	#5	5'-9"	└
Structure Excavation			Cu. Yd.	120
Concrete Structures			Cu. Yd.	24.8
Reinforcement Bars, Epoxy Coated			Pound	3,780
Furnishing Steel Piles, HP 12x53			Foot	374
Driving Piles			Foot	374
Test Pile Steel, HP 12x53			Each	1
Concrete Encasement			Cu. Yd.	4.2



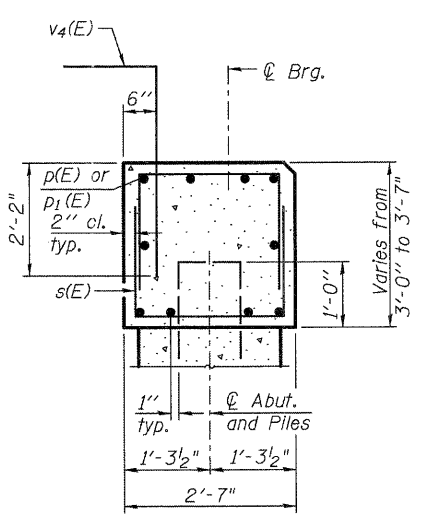
**FIELD CUTTING DIAGRAM**

Order v2(E) bars full length. Cut as shown and use remainder of bars in opposite face.

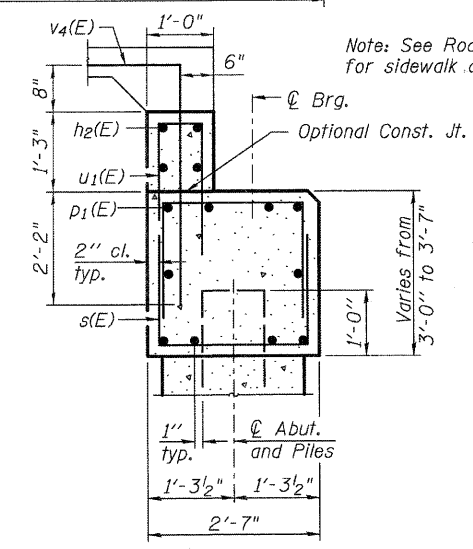


**FIELD CUTTING DIAGRAM**

Order v3(E) bars full length. Cut as shown and use remainder of bars in opposite face.



**SECTION A-A**



**SECTION B-B**

Note: See Roadway plans for sidewalk details.

For details of Bar Splicers, see sheet 20 of 24.

For details of piles and Concrete Encasement, see sheet 19 of 24.

FILE NAME = W:\Proje\2010\1008054\_Berchmy\B-Coord\Structural\Draw\019-6107-016-WestAbut.dwg

**WILLS BURKE KELSEY ASSOCIATES LTD.**  
116 West Main Street, Suite 201  
St. Charles, Illinois 60174  
(630) 443-7755

USER NAME = #USER#	DESIGNED - MLH	REVISED -
PLOT SCALE =	CHECKED - AEU	REVISED -
PLOT DATE = 7/6/2011	DRAWN - AWH	REVISED -
	CHECKED - AEU	REVISED -

**STATE OF ILLINOIS**  
**DEPARTMENT OF TRANSPORTATION**

**WEST ABUTMENT**  
**STRUCTURE NO. 019-6107**  
SHEET NO. 16 OF 24 SHEETS

F.A.U. RTE.	SECTION	COUNTY	TOTAL SHEETS	SHEET NO.
5355	04-00167-00-BR	DEKALB	88	62
FED. ROAD DIST. NO. [ILLINOIS] FED. AID PROJECT				CONTRACT NO. 87491