

**GENERAL NOTES**

- ALL MATERIAL DEEMED SALVAGABLE BY THE ENGINEER SHALL REMAIN THE PROPERTY OF THE ROAD DISTRICT. ALL OTHER MATERIALS SHALL BE DISPOSED OF BY THE CONTRACTOR, AT HIS OWN EXPENSE.
- THE FOLLOWING FACTORS WERE USED TO DETERMINE THE REQUIRED AMOUNT OF MATERIALS NEEDED:
 

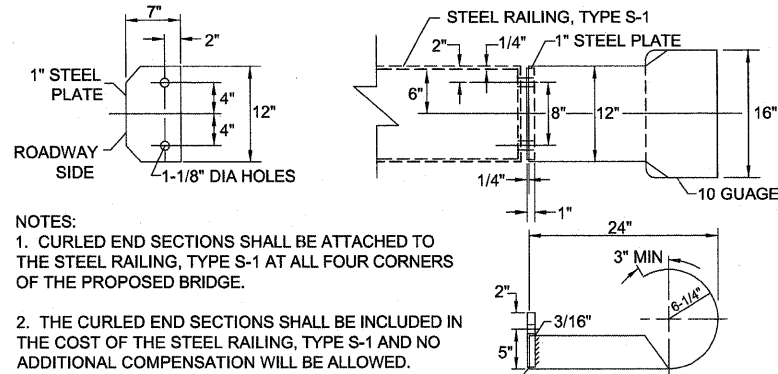
BITUMINOUS MATERIALS (PRIME COAT)	0.5 GALLON/SQ YD
BITUMINOUS MATERIALS (COVER AND SEAL COATS)	0.5 GALLON/SQ YD
COVER COAT AGGREGATE	25 POUNDS/SQ YD
SEAL COAT AGGREGATE	25 POUNDS/SQ YD
NITROGEN FERTILIZER NUTRIENT	90 LB/ACRE
PHOSPHORUS FERTILIZER NUTRIENT	90 LB/ACRE
POTASSIUM FERTILIZER NUTRIENT	90 LB/ACRE
HOT-MIX ASPHALT SURFACE COURSE, MIX "C", N70	112 LBS/SQ YD/IN
- THE FOLLOWING MIXTURE REQUIREMENTS ARE APPLICABLE FOR THIS PROJECT:
 

LOCATION:	BRIDGE DECK
MIXTURE USE:	SURFACE COURSE
AC/PG:	PG 64-22
RAP % (MAX):	10%
DESIGN AIR VOIDS:	4% @ NDES=70
MIX COMPOSITION (GRADATION MIXTURE):	IL-9.5L
FRICTION AGG:	MIXTURE C
MIXTURE WEIGHT:	112 LBS/SQ YD/INCH
- THE CONTRACTOR SHALL NOT BE ALLOWED TO SET THE DECK BEAMS UNTIL THE STEEL RAILING HAS BEEN DELIVERED TO THE JOB SITE OR TO THE CONTRACTOR'S YARD. PROOF OF SUCH DELIVERY MUST BE PRESENTED TO THE ENGINEER, AT HIS REQUEST, PRIOR TO THE PLACEMENT OF THE BEAMS.
- THE FOLLOWING UTILITY COMPANIES MAY HAVE FACILITIES LOCATED WITHIN THE LIMITS OF CONSTRUCTION:
 

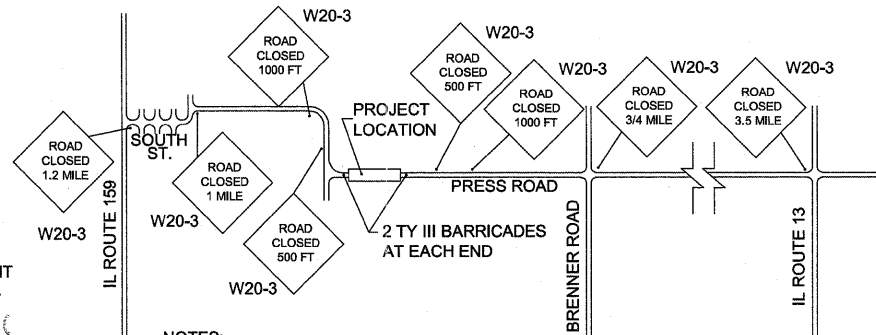
AT&T ILLINOIS	203 GOETHE AVENUE, COLLINSVILLE, IL 62234
FSH WATER COMMISSION	RR1, FREEBURG, IL 62243
MONROE COUNTY ELECTRIC CO-OP	P.O. BOX 128, WATERLOO, IL 62298
- THE LOCATION OF UNDERGROUND FACILITIES, STRUCTURES, AND UTILITIES HAS BEEN DETERMINED FROM SURFACE OBSERVATIONS, AVAILABLE SURVEYS, AND RECORDS, AND MUST BE CONSIDERED APPROXIMATE. THERE MAY BE OTHERS, THE EXISTENCE OF WHICH IS NOT PRESENTLY SHOWN OR KNOWN. IT IS THE CONTRACTOR'S RESPONSIBILITY TO DETERMINE THE EXISTENCE AND LOCATION OF ALL UNDERGROUND FACILITIES, STRUCTURES, AND UTILITIES AND TO PROTECT THEM FROM DAMAGE DURING CONSTRUCTION. CONTACT J.U.L.I.E. BEFORE DIGGING AT 1-800-892-0123.
- THE CONTRACTOR'S ATTENTION IS CALLED TO THE PROPERTY MARKERS AND MONUMENTS, AND SECTION MARKERS THROUGHOUT THE PROJECT.
- THE CONTRACTOR MUST OBTAIN THE WRITTEN APPROVAL FROM THE ENGINEER FOR THE TYPE OF EQUIPMENT TO BE USED TO HAUL EARTH EXCAVATION MATERIALS ACROSS THE NEW BRIDGE STRUCTURE. ONLY RUBBER Tired EQUIPMENT WILL BE PERMITTED.
- WHEN THE CONTRACTOR PROPOSES TO PLACE ANY LOAD ON AN INCOMPLETE BRIDGE DECK OR OVERLOADS ON A COMPLETED BRIDGE DECK, THEY SHALL HAVE THE PROPOSED LOADING REVIEWED AND APPROVED BY A "STRUCTURAL ENGINEER" LICENSED IN THE STATE OF ILLINOIS.
 

THE "STRUCTURAL ENGINEER" SHALL INDICATE ANY LIMITING CONDITIONS FOR LOADING OF THE BRIDGE STRUCTURE. CONDITIONS FOR APPROVED LOADING MAY INCLUDE, BUT ARE NOT LIMITED TO, BACKFILLING AT ABUTMENTS, POURING OF END BLOCKS, GROUTING OF DECK AND DOWEL PINS, LOCATION OF EQUIPMENT ON THE DECK, MAXIMUM LOAD TO BE LIFTED BY THE EQUIPMENT, AND THE TYPE AND SIZE OF THE MATS TO BE PLACED ON THE BRIDGE DECK FOR THE EQUIPMENT OUTRIGGERS, ETC.

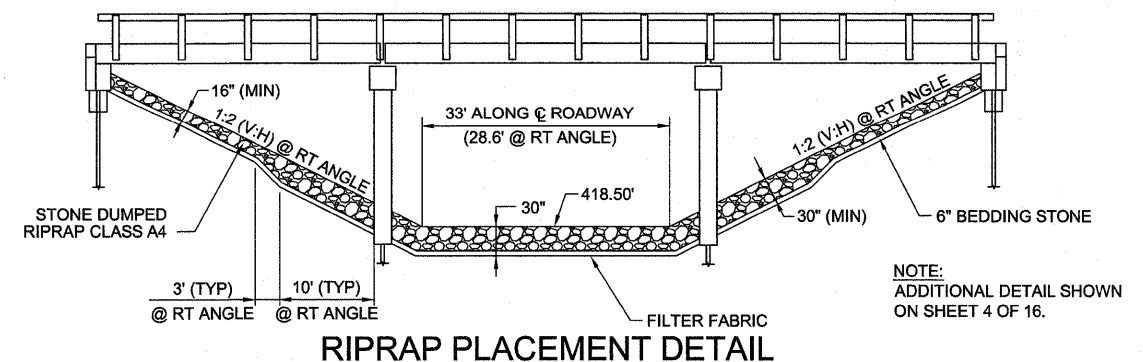
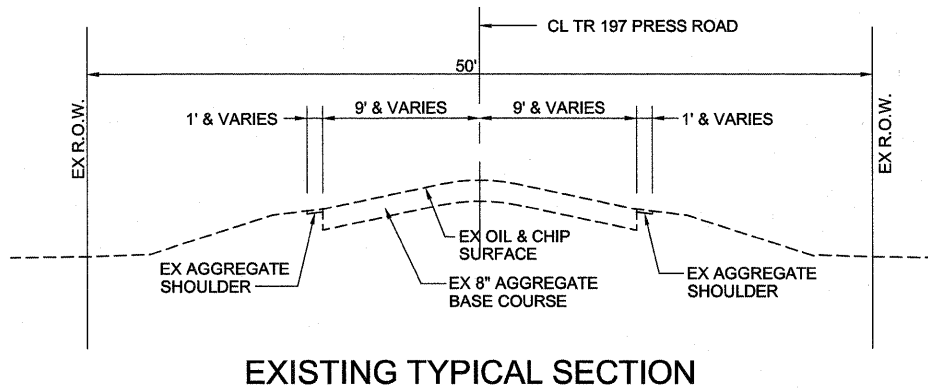
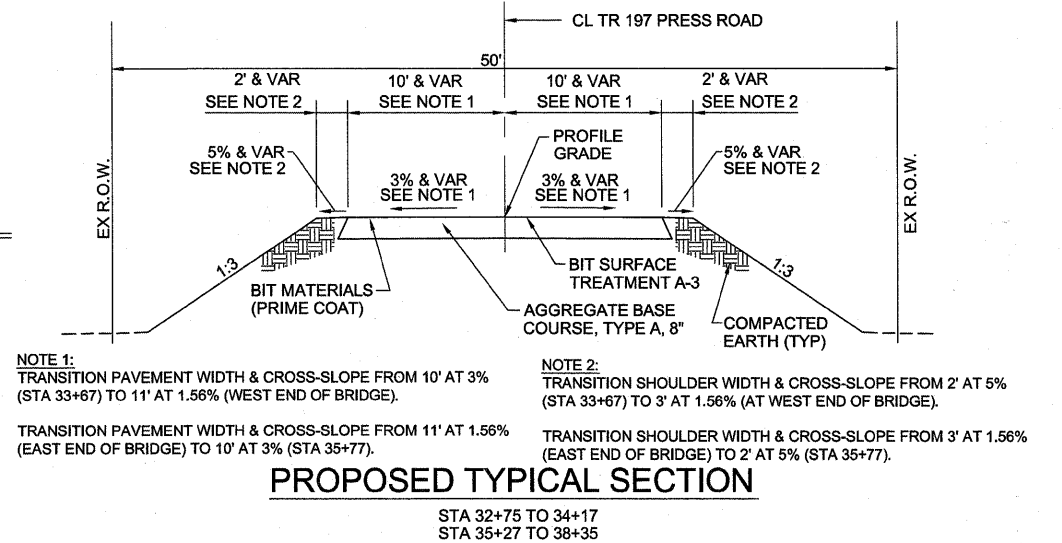
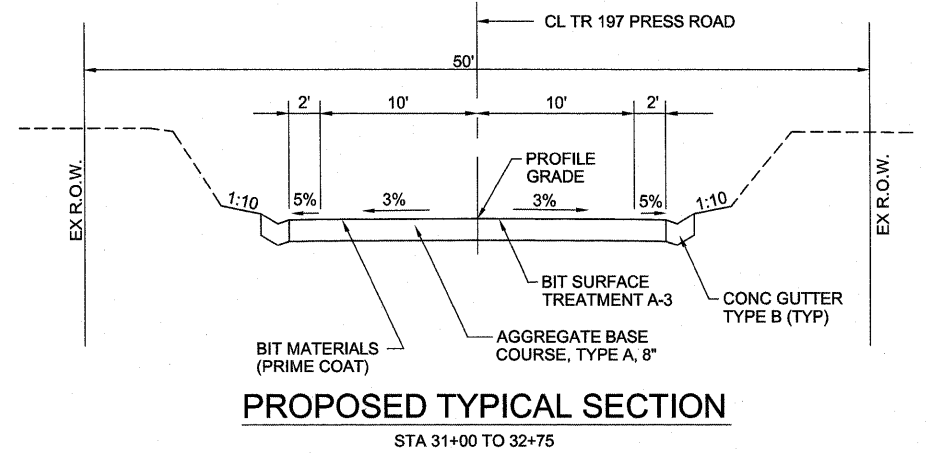
A COPY OF THE PLAN APPROVAL BY THE "STRUCTURAL ENGINEER" SHALL BE SUBMITTED TO THE OFFICE OF THE COUNTY ENGINEER PRIOR TO ANY LOADS BEING PALCED ON THE BRIDGE DECK. FURTHER, THE "STRUCTURAL ENGINEER" SHALL BE ON-SITE DURING THE PROPOSED STRUCTURE LOADING TO CERTIFY COMPLIANCE WITH HIS APPROVED PLAN.



**CURLLED END SECTION DETAILS**



**TRAFFIC CONTROL PLAN**



EROSION CONTROL SCHEDULE		
LOCATION	PERIMETER EROSION BARRIER (FOOT)	TEMPORARY DITCH CHECK (FOOT)
31+00 RT		6
31+00 LT		6
33+00 TO 34+00 LT	100	
33+00 TO 34+25 RT	125	
35+15 TO 36+50 LT	135	
35+30 TO 36+50 RT	120	
37+75 TO 38+35 LT	60	
TOTAL	540	12

FLEXIBLE PAVEMENT STRUCTURAL DESIGN INFORMATION	
AVERAGE ESTIMATED ADT (2010) = 275 ADT	
ROADWAY CLASSIFICATION - LOCAL ROAD	
PROPOSED MATERIAL:	
AGGREGATE BASE COURSE, TYPE A, 8"	
BITUMINOUS SURFACE TREATMENT A-3	

EARTHWORK SCHEDULE						
LOCATION	CUT VOLUME (EARTH EXCAVATION)	CHANNEL EXCAVATION	* UNSUITABLE EXCAVATION (NOT ADJ FOR SHRINK / SWELL)	EXCAVATION TO BE USED AS EMBANKMENT (ADJ FOR SHRINKAGE 25%)	FILL VOLUME (EMBANKMENT)	FURNISHED EXCAVATION
	CU YD	CU YD	CU YD	CU YD	CU YD	CU YD
31+00 TO 34+17	35.9	0.0	3.6	24.2	405.3	381.1
CHANNEL	0.0	550.0	550.0	0.0	0.0	0.0
35+27 TO 38+35	30.7	0.0	3.1	20.7	402.2	381.5
TOTAL	66.6	550.0	556.7	45.0	807.5	763.0

\* ESTIMATED AS 10% OF EARTH EXCAVATION AND CHANNEL EXCAVATION

FILE NAME = 53173-sh102\_gennote\_typical.dwg

DESIGNED -- K. RESTOFF  
 DRAWN -- D. MICKE  
 CHECKED -- M. HARRISON  
 DATE -- NOVEMBER 2010

STATE OF ILLINOIS  
 DEPARTMENT OF TRANSPORTATION

GENERAL NOTES,  
 TYPICAL SECTIONS AND DETAILS  
 SCALE: N/A SHEET NO. 2 OF 16 SHEETS

F.A. RTE.	SECTION	COUNTY	TOTAL SHEETS	SHEET NO.
	08-18101-04-BR	ST. CLAIR	16	2
PROJECT BROS-163(32)		CONTRACT NO.	97466	
ILLINOIS FED. AID PROJECT				