

STATE OF ILLINOIS  
DEPARTMENT OF TRANSPORTATION

F.A.I. RTE.	SECTION	COUNTY	TOTAL SHEETS	SHEET NO.
80	[(06-6,7)&50-8]	BUREAU/LASALLE	9	1
		ILLINOIS	CONTRACT NO. 66M91	

**INDEX OF SHEETS**

- 1 COVER SHEET
- 2 GENERAL NOTES
- 3-4 SUMMARY OF QUANTITIES
- 5 TYPICAL SECTIONS
- 6-7 SCHEDULES
- 8 LAYOUT MAP
- 9 DETAILS

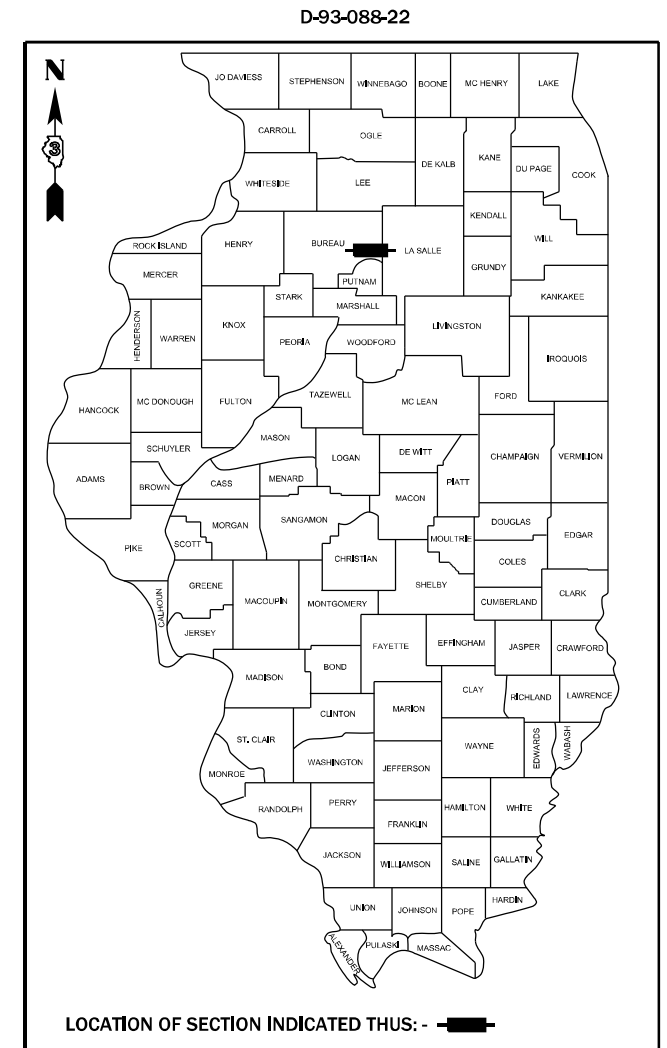
**HIGHWAY STANDARDS**

- 000001-08 STANDARD SYMBOLS, ABBREVIATIONS AND PATTERNS
- 001006 DECIMAL OF AN INCH AND OF A FOOT
- 701400-11 APPROACH TO LANE CLOSURE, FREEWAY/EXPRESSWAY
- 701406-13 LANE CLOSURE, FREEWAY/EXPRESSWAY, DAY OPERATIONS ONLY
- 701426-09 LANE CLOSURE, MULTILANE INTERMITTENT OR MOVING OPERATION, FOR SPEEDS ≥ 45 MPH
- 701428-01 TRAFFIC CONTROL, SETUP AND REMOVAL, FREEWAY/EXPRESSWAY
- 701901-08 TRAFFIC CONTROL DEVICES
- 781001-04 TYPICAL APPLICATIONS RAISED REFLECTIVE PAVEMENT MARKERS

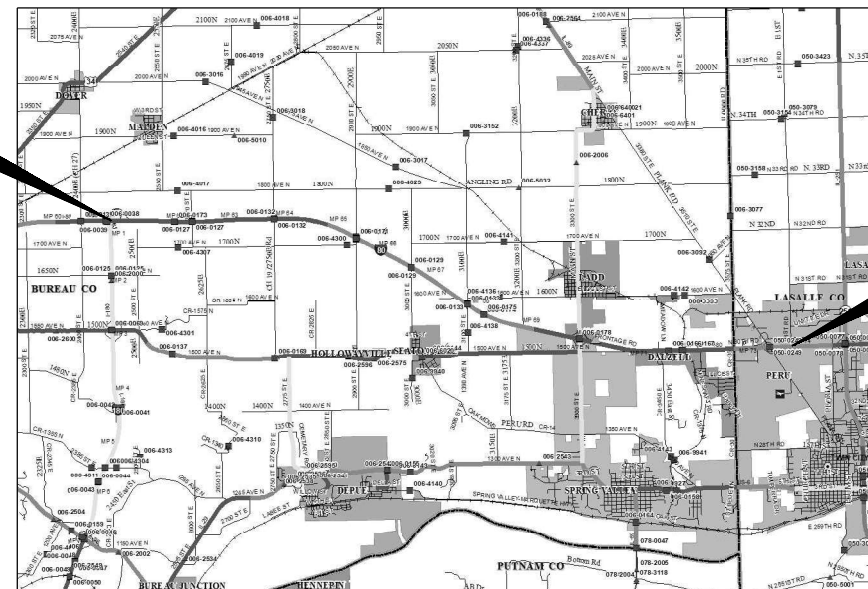
**PROPOSED  
HIGHWAY PLANS**

**FAI ROUTE 80 (I-80)  
SECTION [(06-6,7)&50-8]  
PROJECT HSIP-9AVJ(505)  
CENTERLINE MILLING & RESURFACING  
BUREAU & LASALLE COUNTY**

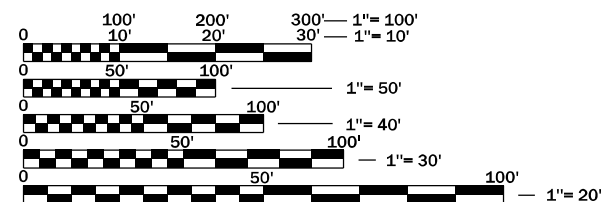
C-93-110-22



PROJECT BEGINS  
STA. 1405+64



PROJECT ENDS  
STA. 533+50



FULL SIZE PLANS HAVE BEEN PREPARED USING STANDARD ENGINEERING SCALES. REDUCED SIZED PLANS WILL NOT CONFORM TO STANDARD SCALES. IN MAKING MEASUREMENTS ON REDUCED PLANS, THE ABOVE SCALES MAY BE USED.

J.U.L.I.E.  
JOINT UTILITY LOCATION INFORMATION FOR EXCAVATION  
1-800-892-0123  
OR 811

**PROJECT ENGINEER: JOSEPH KANNEL, P.E.**  
**UNIT CHIEF: DARCY CARPENTER**  
DISTRICT 3 NO. (815) 434-6131  
CONTRACT NO. 66M91

GROSS LENGTH = 66,803 FT. = 12.65 MILE  
NET LENGTH = 65,432 FT. = 12.39 MILE

**FUNCTION CLASSIFICATION  
INTERSTATE**

2019 ADT = 26600  
P.V. = 61.37% S.U. = 3.29% M.U. = 35.34%

STATE OF ILLINOIS  
DEPARTMENT OF TRANSPORTATION

SUBMITTED July 7 20 22  
*Thomas Almond*  
REGIONAL ENGINEER

August 19, 2022  
*Scott A. Etk*  
ENGINEER OF DESIGN AND ENVIRONMENT

August 19, 2022  
*Stephen M. Smith*  
DIRECTOR OF HIGHWAYS PROJECT IMPLEMENTATION

**PRINTED BY THE AUTHORITY  
OF THE STATE OF ILLINOIS**

**GENERAL NOTES**

THE ENGINEER WILL BE THE SOLE JUDGE CONCERNING CURING TIME FOR THE VARIOUS HMA LIFTS.

ANY REFERENCE TO A STANDARD IN THESE PLANS SHALL BE INTERPRETED TO MEAN THE EDITION AS INDICATED BY THE SUBNUMBER SHOWN IN THE LIST OF STANDARDS OR THE COPY INCLUDED IN THESE PLANS.

THE FOLLOWING RATES OF APPLICATION HAVE BEEN USED IN CALCULATING PLAN QUANTITIES:

HMA RESURFACING	112	LBS / SQ YD / IN
SHORT TERM PAVEMENT MARKING	4	FT /40 FT OF APPLICATION
MIX FOR CRACKS, JTS & FLGWYS	0.0006	TONS / SQ YD

ONLY THE PASSING LANE IS TO BE CLOSED FOR THE CENTERLINE WORK.

THE CONTRACTOR SHALL CONTACT JULIE AT LEAST 48 HOURS PRIOR TO EXCAVATION TO DETERMINE WHICH UTILITIES ARE IN THE AREA.

**COMMITMENTS:**

<b>HMA MIXTURE REQUIREMENT TABLE</b>	
LOCATIONS:	ENITRE PROJECT
MIXTURE USE(S):	LONGITUDINAL PARTIAL DEPTH PATCHING
BINDER GRADE (PG):	PG 64-22
DESIGN AIR VOIDS:	4.0% @ N70
MIXTURE COMPOSITION: (MIXTURE GRADATION)	IL 9.5
FRICITION AGGREGATE:	MIXTURE D
MIXTURE WEIGHT:	112.0 LB/SY/IN
QUALITY MANAGEMENT PROGRAM:	QCQA
SUBLOT SIZE:	N/A
DENSITY TEST METHOD:	NUCLEAR/CORES
MATERIAL TRANSFER DEVICE (REQUIRED)	NO

STATE OF ILLINOIS  
DEPARTMENT OF TRANSPORTATION  
DISTRICT THREE  
AS BUILT INFORMATION

\_\_\_\_\_  
SUPERVISING CONSTRUCTION FIELD ENGINEER

\_\_\_\_\_  
RESIDENT ENGINEER / TECHNICIAN

START & END DATES  
OF CONSTRUCTION:

INSPECTORS:

STATE OF ILLINOIS  
DEPARTMENT OF TRANSPORTATION  
DISTRICT THREE

PREPARED BY: \_\_\_\_\_  
DISTRICT STUDIES & PLANS ENGINEER

DATE: \_\_\_\_\_

EXAMINED BY: \_\_\_\_\_  
DISTRICT CONSTRUCTION ENGINEER

\_\_\_\_\_  
DISTRICT MATERIALS ENGINEER

\_\_\_\_\_  
DISTRICT OPERATIONS ENGINEER

FILE NAME =	USER NAME = Timothy.Pletsch	DESIGNED - _____	REVISED - _____
pw:\idot-pw\berkeley.com\PWIDOT\Documents\IDOT Office\District 3\Projects\0366M91\CADData\0366M91-ehb-cover.dgn		DRAWN - _____	REVISED - _____
Default	PLOT SCALE = 100,0000' / in.	CHECKED - _____	REVISED - _____
	PLOT DATE = 7/8/2022	DATE - _____	REVISED - _____

**STATE OF ILLINOIS  
DEPARTMENT OF TRANSPORTATION**

**GENERAL NOTES**

SCALE: \_\_\_\_\_ SHEET \_\_\_\_\_ OF \_\_\_\_\_ SHEETS STA. \_\_\_\_\_ TO STA. \_\_\_\_\_

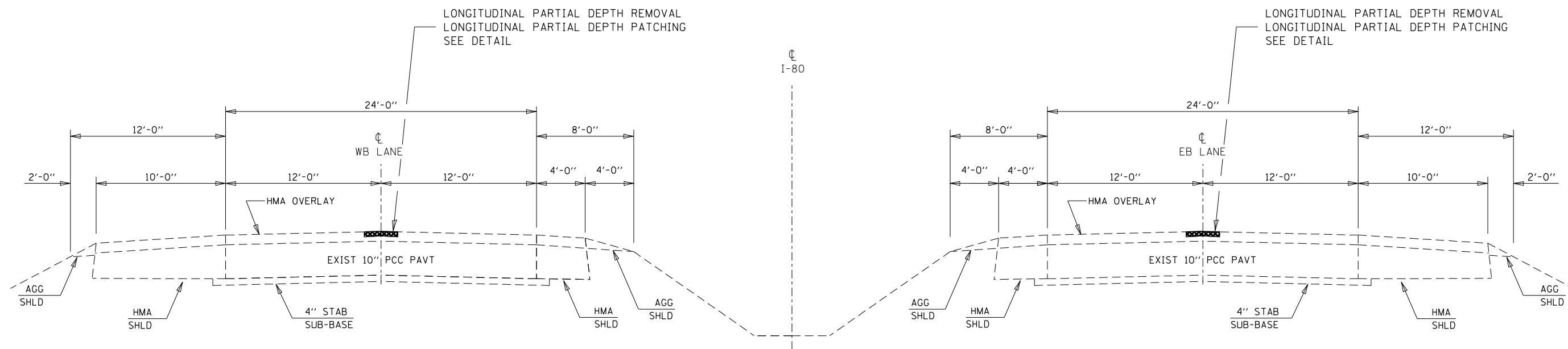
F.A.I. RTE.	SECTION	COUNTY	TOTAL SHEETS	SHEET NO.
80	[[06-6,7] & 50-8]]	BUREAU/LASALLE	9	2
CONTRACT NO. 66M91				
ILLINOIS FED. AID PROJECT				

CODE NO.	ITEM	UNIT	TOTAL QUANTITY	CONSTRUCTION CODE	
				90%FED/10%STATE FAI 80 BUREAU	90%FED/10%STATE FAI 80 LASALLE
				ROADWAY 0021	ROADWAY 0021
				RURAL	RURAL
40600290	BITUMINOUS MATERIALS (TACK COAT)	POUND	13087	11665	1422
40600400	MIXTURE FOR CRACKS, JOINTS, AND FLANGEWAYS	TON	17.2	15.4	1.8
67100100	MOBILIZATION	L SUM	1	0.9	0.1
70100700	TRAFFIC CONTROL AND PROTECTION, STANDARD 701406	L SUM	1	0.9	0.1
70106800	CHANGEABLE MESSAGE SIGN	CAL MO	2	1	1
70300100	SHORT TERM PAVEMENT MARKING	FOOT	13087	11665	1422
70300150	SHORT TERM PAVEMENT MARKING REMOVAL	SQ FT	4363	3889	474
70303130	TEMPORARY PAVEMENT MARKING - LINE 6" - MODIFIED URETHANE	FOOT	32716	29160	3556
* 78004630	PREFORMED PLASTIC PAVEMENT MARKING, TYPE D - LINE 6"	FOOT	32716	29160	3556
* 78011035	GROOVING FOR RECESSED PAVEMENT MARKING 7"	FOOT	32716	29160	3556
* 78100100	RAISED REFLECTIVE PAVEMENT MARKER	EACH	3272	2916	356
78300200	RAISED REFLECTIVE PAVEMENT MARKER REMOVAL	EACH	3272	2916	356
78300201	PAVEMENT MARKING REMOVAL - GRINDING	SQ FT	16359	14581	1778
X4405020	LONGITUDINAL PARTIAL DEPTH REMOVAL 2"	FOOT	29080	25920	3160

\*= SPECIALTY ITEM

FILE NAME =	USER NAME = Timothy.Pletsch	DESIGNED - _____	REVISED - _____	<b>STATE OF ILLINOIS DEPARTMENT OF TRANSPORTATION</b>	<b>SUMMARY OF QUANTITIES</b>			F.A.I. RTE.	SECTION	COUNTY	TOTAL SHEETS	SHEET NO.
pw:\illdot-pw\berkeley.com\PWIDOT\Documents\IDOT Office\District 3\Projects\D366M91\CADData\D366M91-esh-cover.dgn	DRAWN - _____	REVISED - _____	80					[[06-6,7]&50-8]]	BUREAU/LASALLE	9	3	
Default	PLOT SCALE = 100,0000 / 1 in.	CHECKED - _____	REVISED - _____		CONTRACT NO. 66M91			ILLINOIS FED. AID PROJECT				
	PLOT DATE = 7/6/2022	DATE - _____	REVISED - _____		SCALE: _____	SHEET _ OF _ SHEETS	STA. _____	TO STA. _____				

CODE NO.	ITEM	UNIT	TOTAL QUANTITY	CONSTRUCTION CODE	
				90%FED/10%STATE FAI 80 BUREAU	90%FED/10%STATE FAI 80 LASALLE
				ROADWAY	ROADWAY
				0021	0021
				RURAL	RURAL
X4420900	LONGITUDINAL PARTIAL DEPTH PATCHING	TON	3257	2903	354



**WESTBOUND**

STA 1405+64 TO STA 1433+49.29  
 OMISSION STA 1433+49.29 TO STA 1436+21.61  
 STA 1436+21.61 TO STA 1544+87.78  
 STA EQ STA 1544+87.78 BK = STA 1544+88.38 AH  
 STA 1544+88.38 TO STA 1611+56.7  
 OMISSION STA 1611+56.7 TO STA 1615+73.62  
 STA 1615+73.62 TO STA 1660+83.19  
 STA EQ STA 1660+83.19 BK = STA 1660+82.35 AH  
 STA 1660+82.35 TO STA 1757+29.68  
 OMISSION STA 1757+29.68 TO STA 1760+11.53  
 STA 1760+11.53 TO STA 1815+21.84  
 STA EQ STA 1815+21.84 BK = STA 275+00 AH  
 STA 275+00 TO STA 300+00  
 STA EQ STA 300+00 BK = 299+98.81 AH  
 STA 299+98.81 TO STA 395+00  
 STA EQ STA 395+00 BK = 395+06.04 AH  
 STA 395+06.4 TO STA 399+07.07  
 OMISSION STA 399+07.07 TO STA 401+37.07  
 STA 401+37.07 TO STA 412+19.31  
 OMISSION STA 412+19.31 TO STA 414+33.81  
 STA 414+33.81 TO STA 462+39.33  
 STA 462+39.33 TO STA 533+50

**TYPICAL SECTION**

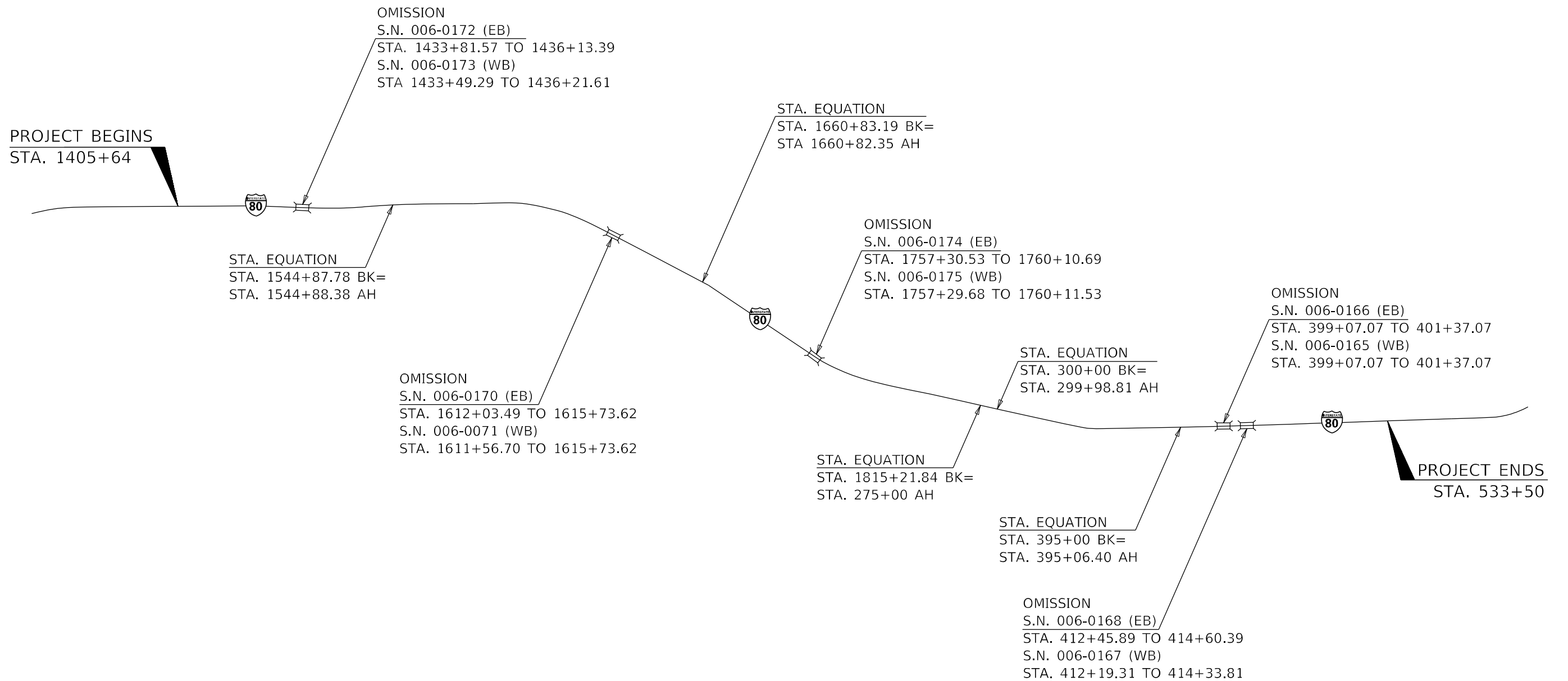
**EASTBOUND**

STA 1405+64 TO STA 1433+81.57  
 OMISSION STA 1433+81.57 TO STA 1436+13.39  
 STA 1436+13.39 TO STA 1544+87.78  
 STA EQ STA 1544+87.78 BK = STA 1544+88.38 AH  
 STA 1544+88.38 TO STA 1612+03.49  
 OMISSION STA 1612+03.49 TO STA 1615+73.62  
 STA 1615+73.62 TO STA 1660+83.19  
 STA EQ STA 1660+83.19 BK = STA 1660+82.35 AH  
 STA 1660+82.35 TO STA 1757+30.53  
 OMISSION STA 1757+30.53 TO STA 1760+10.69  
 STA 1760+10.69 TO STA 1815+21.84  
 STA EQ STA 1815+21.84 BK = STA 275+00 AH  
 STA 275+00 TO STA 300+00  
 STA EQ STA 300+00 BK = 299+98.81 AH  
 STA 299+98.81 TO STA 395+00  
 STA EQ STA 395+00 BK = 395+06.04 AH  
 STA 395+06.4 TO STA 399+07.07  
 OMISSION STA 399+07.07 TO STA 401+37.07  
 STA 401+37.07 TO STA 412+45.89  
 OMISSION STA 412+45.89 TO STA 414+60.39  
 STA 414+60.39 TO STA 462+39.33  
 STA 462+39.33 TO STA 533+50

FILE NAME =	USER NAME = Timothy.Pietsch	DESIGNED -	REVISED -	<b>STATE OF ILLINOIS DEPARTMENT OF TRANSPORTATION</b>	<b>I-80 TYPICAL SECTIONS</b>	F.A.I. RTE#	SECTION	COUNTY	TOTAL SHEETS	SHEET NO.	
pw:\idot-pw.bentley.com\PIWIDOT\Documents\IDOT Offices\District 3\Projects\0366M91\CDRAWN\366M91 Typical Sections.dwg	DRAWN	366M91	Typical Sections			80	[(06-6,7)&50-8]I	BUREAU/LASALLE	9	5	
Default	PLOT SCALE = 100.0000' / in.	CHECKED -	REVISED -			CONTRACT NO. 66M91					
	PLOT DATE = 7/6/2022	DATE -	REVISED -			ILLINOIS FED. AID PROJECT					

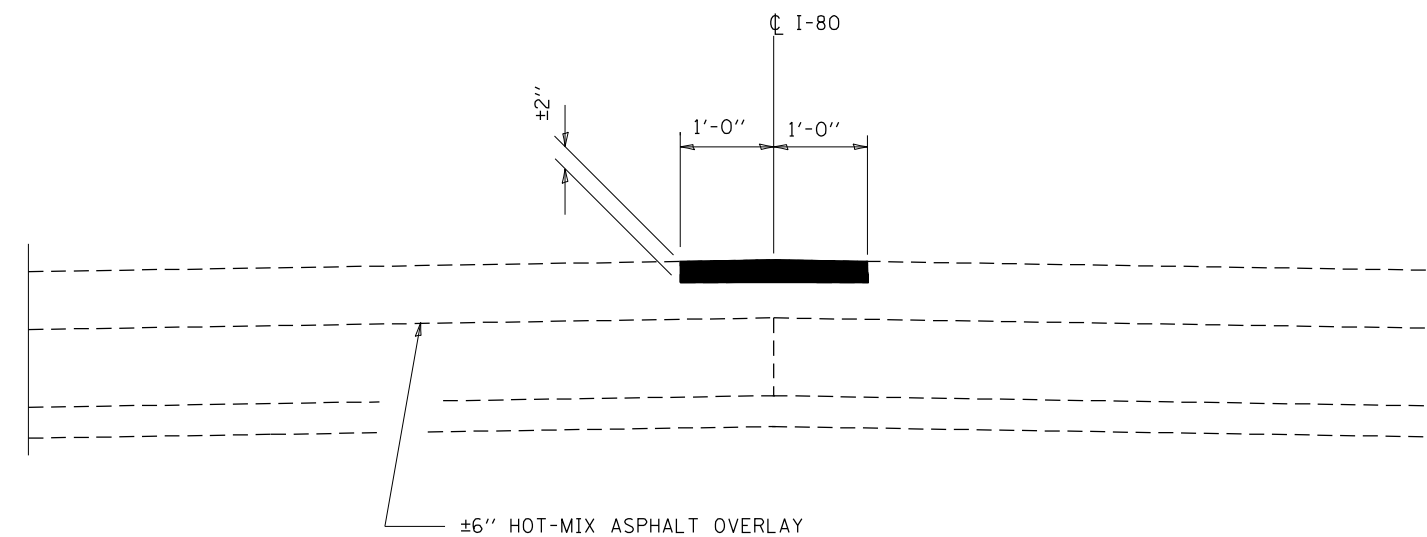
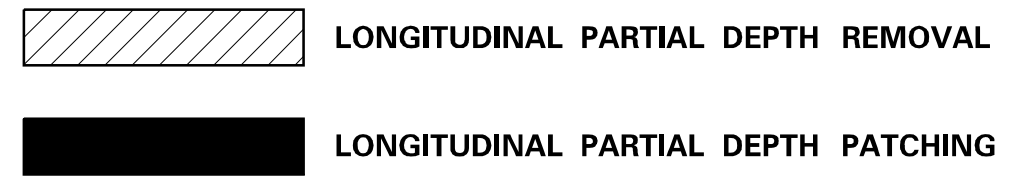
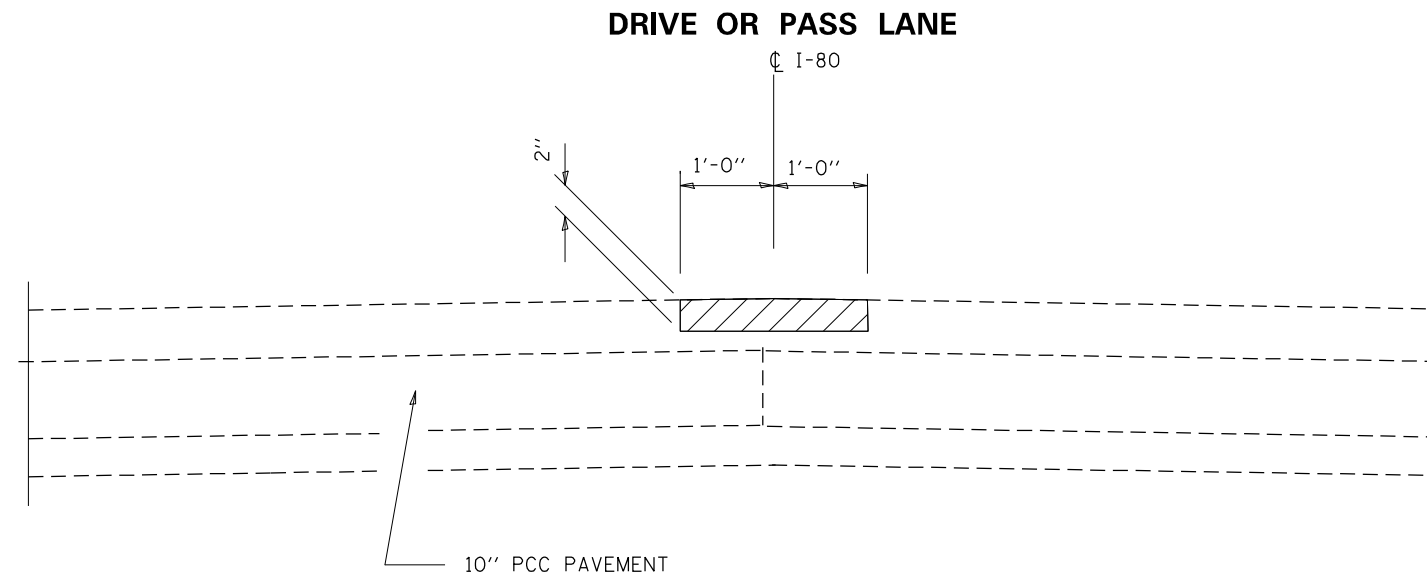
PAVEMENT REMOVAL & REPLACEMENT SCHEDULE							
LOCATION			LENGTH	HMA SURF REMOVAL 2"	HMA SC IL 9.5, MIX D, N70, 2"	BIT MTLs TACK COAT	MIX FOR CR, JTS, FLANGEWYS
STA	TO	STA	FOOT	SQ YD	TON	POUND	TON
<b>EASTBOUND BUREAU COUNTY</b>							
1405+64.	TO	1433+81.57	2818	626	70	282	0.4
1433+81.57		1436+13.39	OMISSION 006-0172				
1436+13.39		1544+87.78	10874	2417	271	1087	1.4
1544+87.78		1544+88.38	STA EQUATION				
1544+88.38		1612+03.49	6715	1492	167	672	0.9
1612+03.49		1615+73.62	OMISSION 006-0170				
1615+73.62		1660+83.19	4510	1002	112	451	0.6
1660+83.19		1660+82.35	STA EQUATION				
1660+82.35		1757+30.53	9648	2144	240	965	1.3
1757+30.53		1760+10.69	OMISSION 006-0174				
1760+10.69		1815+21.84	5511	1225	137	551	0.7
1815+21.84		275+00.	STA EQUATION				
275+00.		300+00.	2500	556	62	250	0.3
300+00.		299+98.81	STA EQUATION				
299+98.81		395+00.	9501	2111	236	950	1.3
395+00.		395+06.4	STA EQUATION				
395+06.4		399+07.07	401	89	10	40	0.1
399+07.07		401+37.07	OMISSION 006-0166				
401+37.07		412+45.89	1109	246	28	111	0.1
412+45.89		414+60.39	OMISSION 006-0168				
414+60.39		462+39.33	4779	1062	119	478	0.6
SUBTOTAL			58366	12970	1453	5837	7.7
<b>EASTBOUND LASALLE COUNTY</b>							
462+39.33		533+50.	7111	1580	177	711	0.9
SUBTOTAL			7111	1580	177	711	0.9
<b>WESTBOUND LASALLE COUNTY</b>							
533+50.		462+39.33	7111	1580	177	711	0.9
SUBTOTAL			7111	1580	177	711	0.9
<b>WESTBOUND BUREAU COUNTY</b>							
462+39.33		414+33.81	4806	1068	120	481	0.6
414+33.81		412+19.31	OMISSION 006-0167				
412+19.31		401+37.07	1082	240	27	108	0.1
401+37.07		399+07.07	OMISSION 006-0165				
399+07.07		395+06.4	401	89	10	40	0.1
395+06.4		395+00.	STA EQUATION				
395+00.		299+98.81	9501	2111	236	950	1.3
299+98.81		300+00.	STA EQUATION				
300+00.		275+00.	2500	556	62	250	0.3
275+00.		1815+21.84	STA EQUATION				
1815+21.84		1760+11.53	5510	1225	137	551	0.7
1760+11.53		1757+29.68	OMISSION 006-0175				
1757+29.68		1660+82.35	9647	2144	240	965	1.3
1660+82.35		1660+83.19	STA EQUATION				
1660+83.19		1615+73.62	4510	1002	112	451	0.6
1615+73.62		1611+56.7	OMISSION 006-0171				
1611+56.7		1544+88.38	6668	1482	166	667	0.9
1544+88.38		1544+87.78	STA EQUATION				
1544+87.78		1436+21.61	10866	2415	270	1087	1.4
1436+21.61		1433+49.29	OMISSION 006-0173				
1433+49.29		1405+64.	2785	619	69	279	0.4
SUBTOTAL			58277	12950	1450	5828	7.7
<b>TOTALS</b>			<b>130864</b>	<b>29080</b>	<b>3257</b>	<b>13087</b>	<b>18</b>

PAVEMENT MARKING REMOVAL & REPLACEMENT SCHEDULE										
LOCATION		LENGTH	GRV RCSD PVT MKING 7"	PREF PL PVT MKING TY D, 6"	SHORT TERM PVT MKING	SHORT TERM PVT MKING REMOVAL	TEMP PVT MKING - MOD URETHANE, 6"	PVT MKING REMOVAL GRINDING	RAISED REF PVT MKR	RAISED REF PVT MKR REMOVAL
STA	TO STA	FOOT	FOOT	FOOT	FOOT	SQ FT	FOOT	SQ FT	EACH	EACH
EASTBOUND BUREAU COUNTY										
1405+64.	TO 1433+81.57	2818	704	704	282	94	704	352	70	70
1433+81.57	1436+13.39									
1436+13.39	1544+87.78	10874	2719	2719	1087	362	2719	1359	272	272
1544+87.78	1544+88.38									
1544+88.38	1612+03.49	6715	1679	1679	672	224	1679	839	168	168
1612+03.49	1615+73.62									
1615+73.62	1660+83.19	4510	1127	1127	451	150	1127	564	113	113
1660+83.19	1660+82.35									
1660+82.35	1757+30.53	9648	2412	2412	965	322	2412	1206	241	241
1757+30.53	1760+10.69									
1760+10.69	1815+21.84	5511	1378	1378	551	184	1378	689	138	138
1815+21.84	275+00.									
275+00.	300+00.	2500	625	625	250	83	625	313	63	63
300+00.	299+98.81									
299+98.81	395+00.	9501	2375	2375	950	317	2375	1188	238	238
395+00.	395+06.4									
395+06.4	399+07.07	401	100	100	40	13	100	50	10	10
399+07.07	401+37.07									
401+37.07	412+45.89	1109	277	277	111	37	277	139	28	28
412+45.89	414+60.39									
414+60.39	462+39.33	4779	1195	1195	478	159	1195	597	119	119
SUBTOTAL		58366	14591	14591	5837	1946	14591	7296	1459	1459
EASTBOUND LASALLE COUNTY										
462+39.33	533+50.	7111								
SUBTOTAL		7111	1778	1778	711	237	1778	889	178	178
WESTBOUND LASALLE COUNTY										
533+50.	462+39.33	7111								
SUBTOTAL		7111	1778	1778	711	237	1778	889	178	178
WESTBOUND BUREAU COUNTY										
462+39.33	414+33.81	4806	1201	1201	481	160	1201	601	120	120
414+33.81	412+19.31									
412+19.31	401+37.07	1082	271	271	108	36	271	135	27	27
401+37.07	399+07.07									
399+07.07	395+06.4	401	100	100	40	13	100	50	10	10
395+06.4	395+00.									
395+00.	299+98.81	9501	2375	2375	950	317	2375	1188	238	238
299+98.81	300+00.									
300+00.	275+00.	2500	625	625	250	83	625	313	63	63
275+00.	1815+21.84									
1815+21.84	1760+11.53	5510	1378	1378	551	184	1378	689	138	138
1760+11.53	1757+29.68									
1757+29.68	1660+82.35	9647	2412	2412	965	322	2412	1206	241	241
1660+82.35	1660+83.19									
1660+83.19	1615+73.62	4510	1127	1127	451	150	1127	564	113	113
1615+73.62	1611+56.7									
1611+56.7	1544+88.38	6668	1667	1667	667	222	1667	834	167	167
1544+88.38	1544+87.78									
1544+87.78	1436+21.61	10866	2717	2717	1087	362	2717	1358	272	272
1436+21.61	1433+49.29									
1433+49.29	1405+64.	2785	696	696	279	93	696	348	70	70
SUBTOTAL		58277	14569	14569	5828	1943	14569	7285	1457	1457
TOTAL		130864	32716	32716	13086	4362	32716	16358	3272	3272



FILE NAME =	USER NAME = Timothy.Pletsch	DESIGNED -	REVISED -	<b>STATE OF ILLINOIS DEPARTMENT OF TRANSPORTATION</b>	<b>PROJECT LOCATION MAP</b>			F.A.I. RTE.	SECTION	COUNTY	TOTAL SHEETS	SHEET NO.
pw:\illdot-pw\berkeley.com\PWIDOT\Documents\IDOT Office\District 3\Projects\I386M91\CADData\I386M91-eh-line.dwg	DRAWN -	REVISED -	80					[[06-6,7]&50-8]]	BUREAU/LASALLE	9	8	
Default	PLOT SCALE = 100,0000' / in.	CHECKED -	REVISED -					CONTRACT NO. 66M91				
	PLOT DATE = 7/8/2022	DATE -	REVISED -					SCALE: _____	SHEET _ OF _ SHEETS	STA. _____ TO STA. _____	ILLINOIS	FED. AID PROJECT





**NOTES**

- 1) RESURFACING SHALL BE LOCATED AT THE CENTERLINE OF PAVEMENT JOINT. ACTUAL LOCATIONS SHALL BE FIELD DETERMINED BY THE ENGINEER PRIOR TO THE CONTRACTOR BEGINNING HIS/HER CONSTRUCTION OPERATIONS.
- 2) OFFSET OF THE PERMANENT CENTERLINE PAVEMENT STRIPING SHALL BE FIELD DETERMINED BY THE ENGINEER. TEMPORARY PAVEMENT MARKING SHALL BE PLACED AT THE SAME LOCATION AS THE PROPOSED PERMANENT PAVEMENT MARKING.
- 3) AFTER MILLING, AND PRIOR TO PLACING THE HMA MIXTURE, AREAS WITH SIGNIFICANT ADDITIONAL DETERIORATION ALONG THE CENTERLINE SHALL BE PREFILLED WITH MIXTURES FOR CRACK, JOINTS AND FLANGWAYS AND COMPACTED TO THE SATISFACTION OF THE ENGINEER

FILE NAME =	USER NAME = Timothy Pietsch	DESIGNED - _____	REVISED - _____	<b>STATE OF ILLINOIS DEPARTMENT OF TRANSPORTATION</b>	<b>LONGITUDINAL PARTIAL DEPTH PATCHING DETAIL</b>	F.A.I. RTE.	SECTION	COUNTY	TOTAL SHEETS	SHEET NO.	
		DRAWN - _____	REVISED - _____			80	[[06-6,7]&50-8]]	BUREAU/LASALLE	9	9	
	PLOT SCALE = 100,0000' / in.	CHECKED - _____	REVISED - _____			CONTRACT NO. 66M91					
Default	PLOT DATE = 7/6/2022	DATE - _____	REVISED - _____			SCALE: _____		SHEET _ OF _ SHEETS		STA. _____ TO STA. _____	