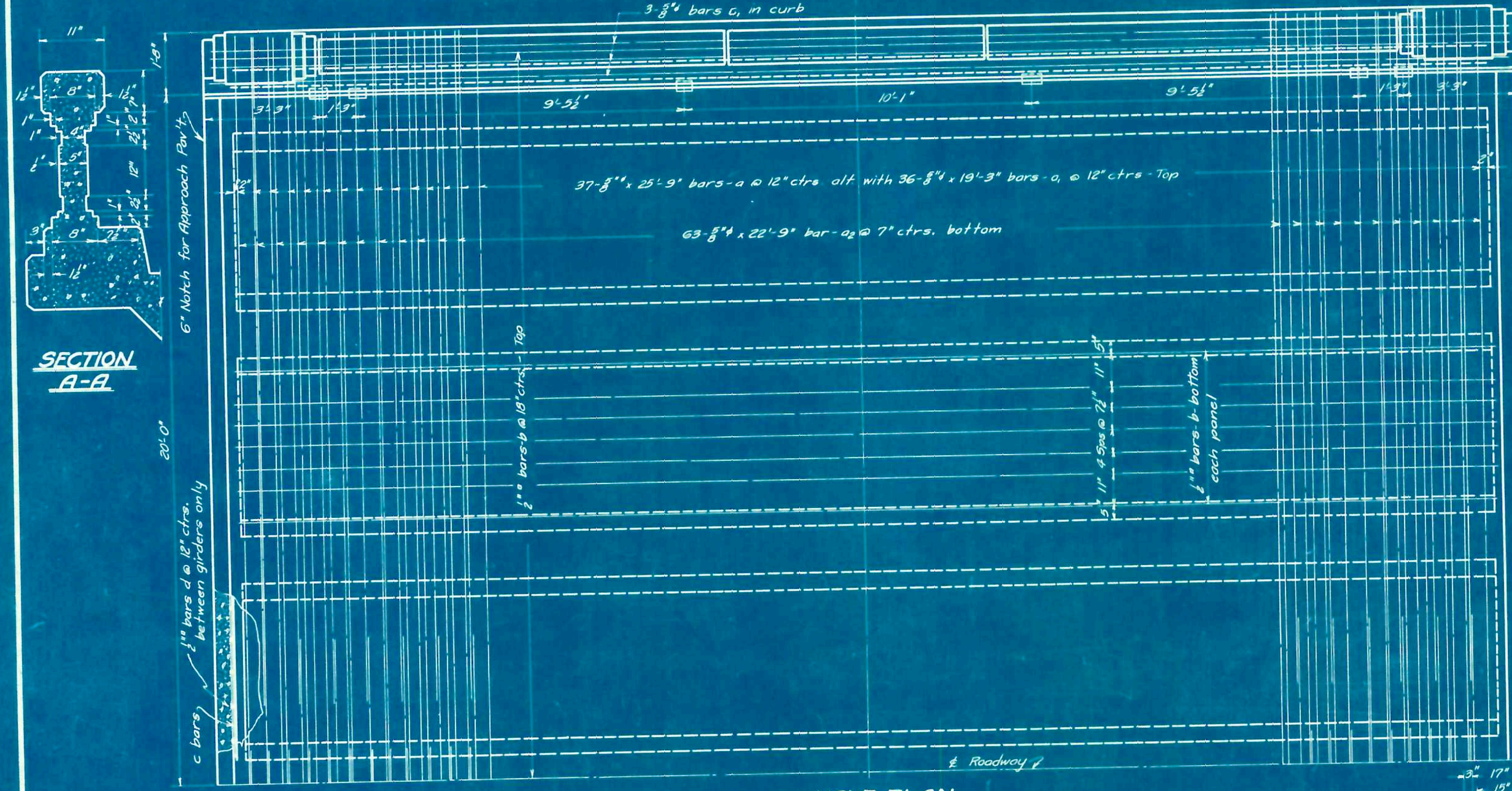
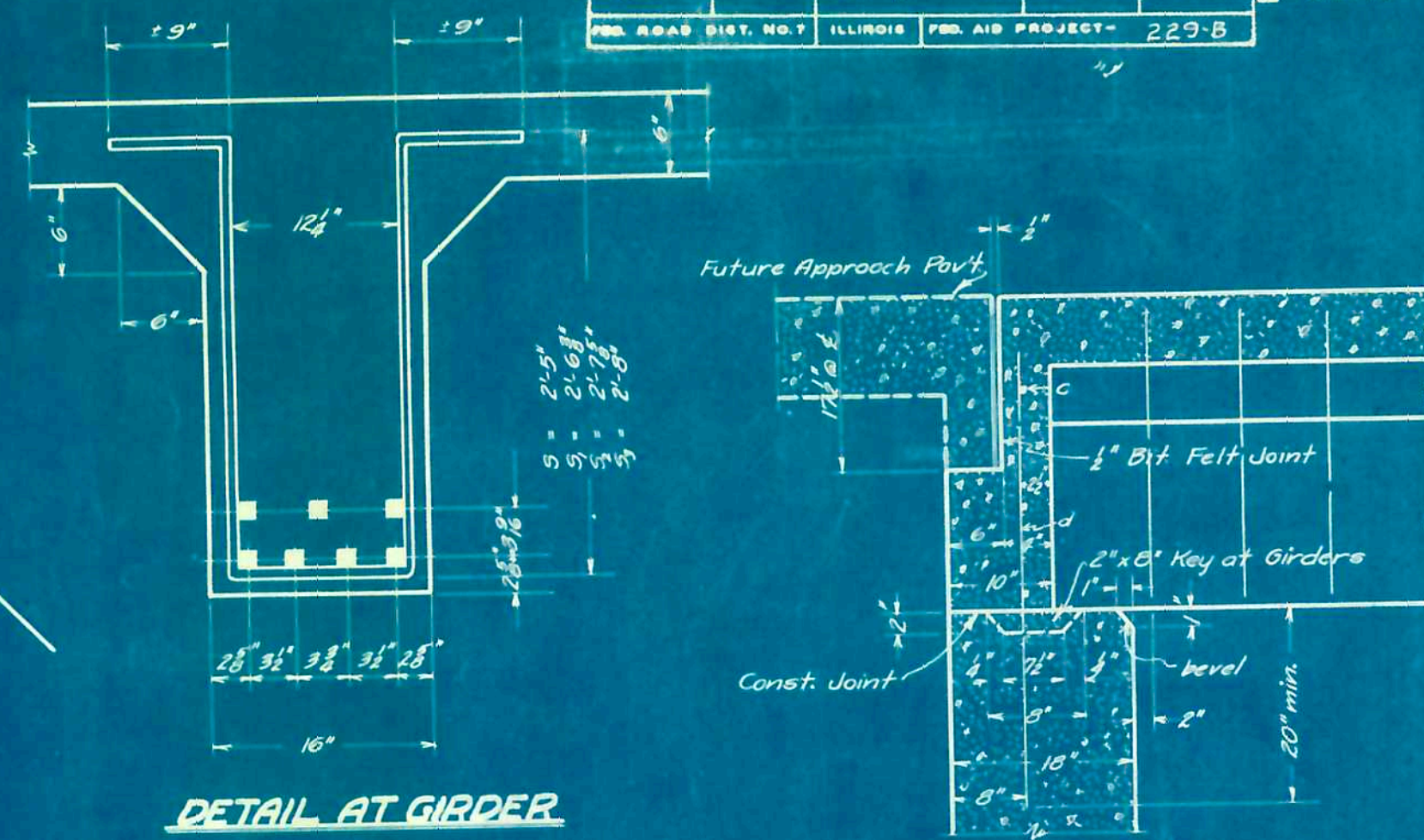
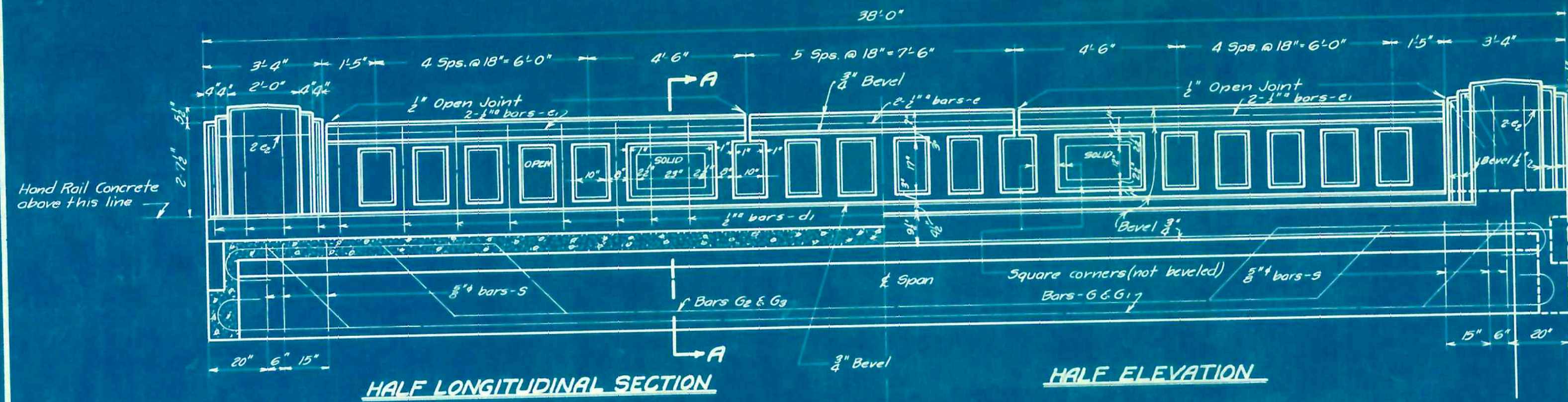


B.M. # 60 N and W, in Fence Post at right of Sta. 511+17
Elevation 356.95

**ORIGINAL STRUCTURAL PLANS
FOR INFORMATION ONLY**

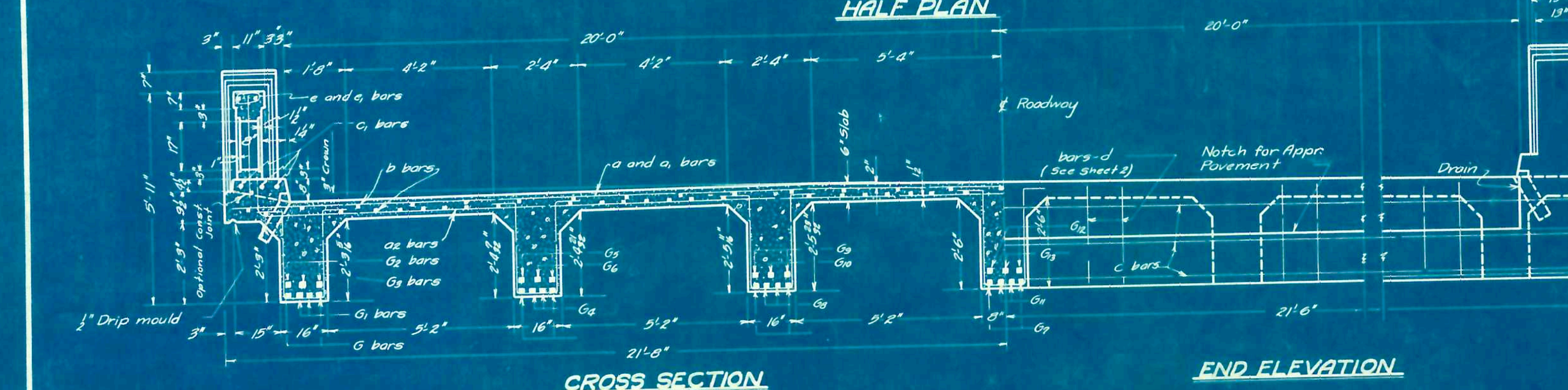
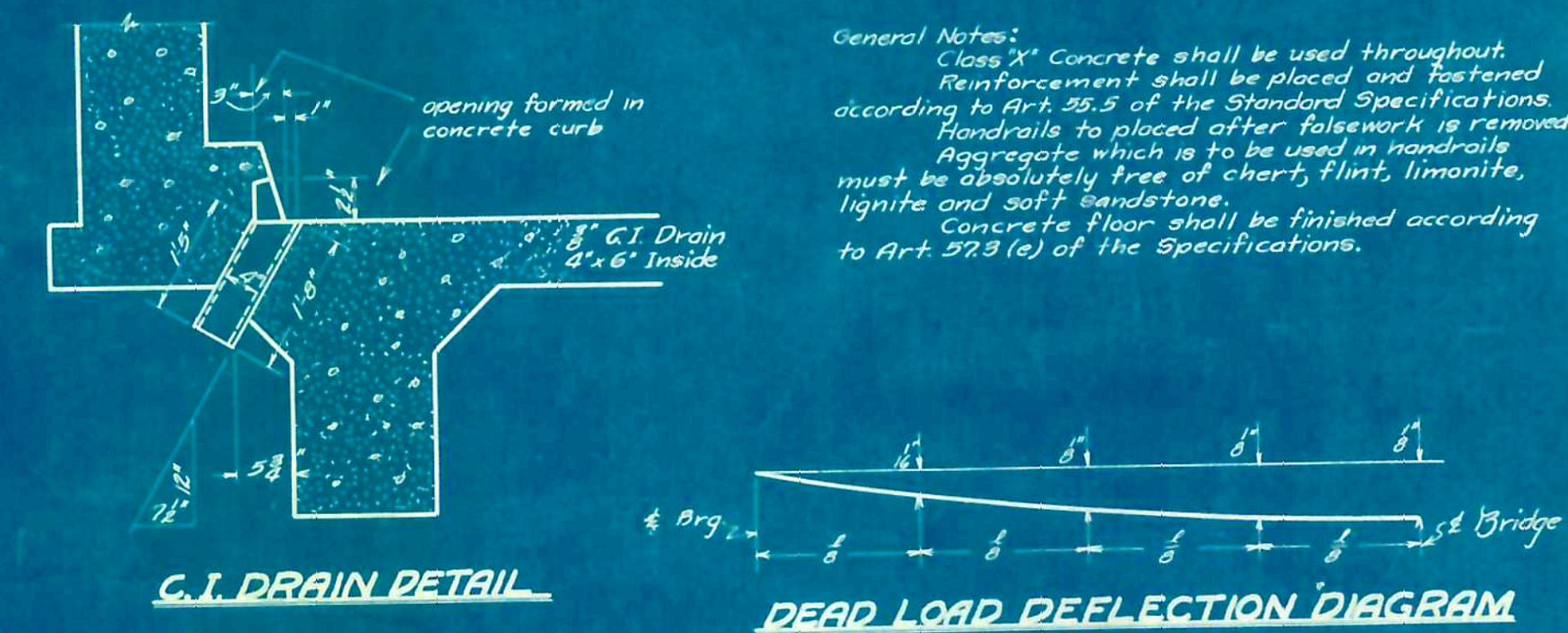
STATE OF ILLINOIS
DEPARTMENT OF PUBLIC WORKS & BUILDINGS
DIVISION OF HIGHWAYS

| | | | | | |
|-----------------------|----------|--------------------------|--------------|-----------|-----------|
| BOND ISSUE ROUTE NO. | SECTION | COUNTY | TOTAL SHEETS | SHEET NO. | SHEET NO. |
| 118A | 108-B-1 | Livingston | 34 | 23 | 2 |
| FED. ROAD DIST. NO. 7 | ILLINOIS | FED. AID PROJECT - 229-B | | | |



SUPERSTRUCTURE - BILL OF MATERIAL

| Bar | No. | Size | Length | Bar | No. | Size | Length |
|-------------------------------|-----|--------|--------|-----------------|-----|--------|--------|
| a | 73 | 3/8" | 25'-9" | G ₂ | 4 | 1 1/2" | 41'-6" |
| d ₁ | 73 | " | 19'-3" | G ₃ | 4 | " | 41'-6" |
| a ₂ | 126 | " | 22'-9" | G ₆ | 2 | " | 41'-6" |
| b | 75 | 1/2" | 36'-6" | G ₇ | 6 | " | 40'-9" |
| c | 12 | " | 22'-9" | G ₈ | 4 | " | 41'-6" |
| e | 6 | 3/8" | 37'-9" | G ₉ | 4 | 1" | 41'-0" |
| d ₂ | 62 | 1/2" | 3'-0" | G ₁₀ | 2 | " | 41'-0" |
| e | 4 | " | 7'-9" | G ₁₁ | 2 | 1 1/2" | 41'-9" |
| e | 8 | " | 11'-6" | G ₁₂ | 2 | " | 41'-9" |
| e | 8 | " | 3'-0" | G ₁₃ | 1 | " | 41'-9" |
| a | 8 | 1 1/2" | 41'-0" | G ₁₄ | 12 | 3/4" | 7'-6" |
| d ₁ | 4 | 1 1/2" | 41'-9" | G ₁₅ | 12 | " | 7'-9" |
| a ₂ | 4 | " | 41'-6" | G ₁₆ | 12 | " | 8'-0" |
| G ₁ | 2 | " | 41'-6" | G ₁₇ | 6 | " | 8'-0" |
| Handrail Concrete | | | | Cu Yds 4.4 | | | |
| Class 'X' Concrete | | | | Cu Yds 72.1 | | | |
| Reinforcing Steel | | | | Lb. 13,805 | | | |
| C. I. Floor Drains | | | | Each 12 | | | |
| Removal of Existing Structure | | | | Each 1 | | | |

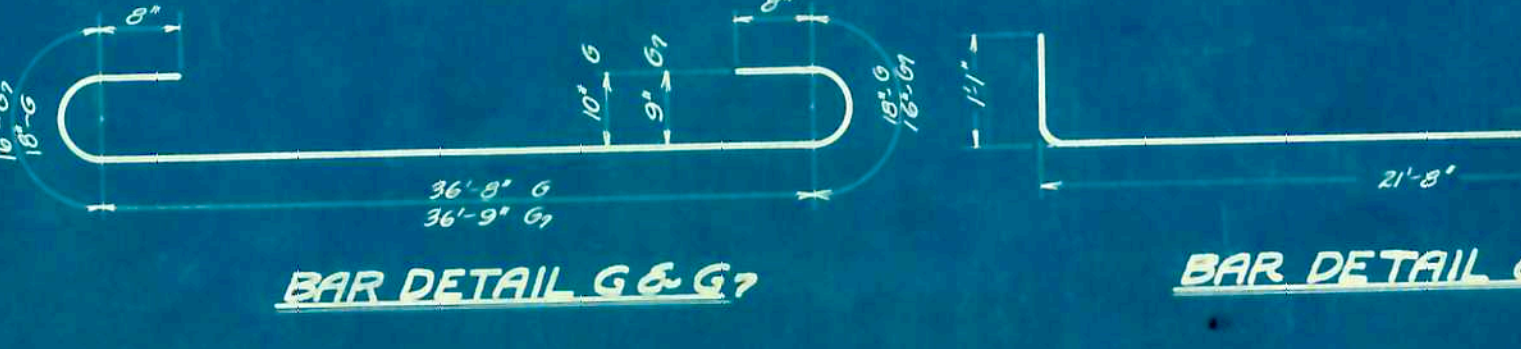


DEAD LOAD DEFLECTION DIAGRAM

| Bar | a | b | c | d | e | f | g | h |
|-----------------|-----------|-------|-----------|------------|-----------|--------|-------|-----------|
| G ₁ | 0'-8 1/2" | 1'-4" | 0'-5 3/8" | 3'-4 1/2" | 2'-4 3/8" | 30'-0" | 0'-9" | 2'-4 3/8" |
| G ₂ | 0'-8 1/2" | 1'-4" | 3'-9 1/2" | 2'-11 1/2" | 2'-1 1/2" | 24'-0" | 0'-9" | 2'-1 1/2" |
| G ₃ | 0'-8 1/2" | 1'-4" | 6'-9 1/2" | 2'-11 1/2" | 2'-1 1/2" | 18'-0" | 0'-9" | 2'-1 1/2" |
| G ₄ | 0'-6 1/2" | 1'-4" | 0'-2 3/8" | 3'-6 3/8" | 2'-6" | 30'-0" | 0'-9" | 2'-6" |
| G ₅ | 0'-7 3/8" | 1'-4" | 3'-0" | 3'-1 3/8" | 2'-2 3/8" | 24'-0" | 0'-9" | 2'-2 3/8" |
| G ₆ | 0'-7 3/8" | 1'-4" | 6'-8" | 3'-1 3/8" | 2'-2 3/8" | 18'-0" | 0'-9" | 2'-2 3/8" |
| G ₇ | 0'-5 3/8" | 1'-4" | 0'-3 1/2" | 3'-0 1/2" | 2'-7 1/2" | 30'-0" | 0'-9" | 2'-7 1/2" |
| G ₈ | 0'-7 1/2" | 1'-4" | 3'-6 3/8" | 3'-3" | 2'-3 3/8" | 24'-0" | 0'-9" | 2'-3 3/8" |
| G ₉ | 0'-5 3/8" | 1'-2" | 6'-7 1/2" | 3'-2 3/8" | 2'-3 1/2" | 18'-0" | 0'-8" | 2'-3 1/2" |
| G ₁₀ | 0'-7" | 1'-4" | 0'-9" | 3'-8 1/2" | 2'-7 1/2" | 30'-0" | 0'-9" | 2'-7 1/2" |
| G ₁₁ | 0'-8 1/2" | 1'-4" | 3'-0 3/8" | 3'-3 3/8" | 2'-4" | 24'-0" | 0'-9" | 2'-4" |
| G ₁₂ | 0'-8 1/2" | 1'-4" | 6'-6 3/8" | 3'-3 3/8" | 2'-4" | 18'-0" | 0'-9" | 2'-4" |

| | |
|-----------|---------------|
| COMPUTED | S. G. Martin |
| CHECKED | W. L. Collins |
| DRAWN | S. G. M. |
| CHECKED | W. L. C. |
| ASSEMBLED | |
| CHECKED | |

EXAMINED 3-19 1937
APPROVED
CHIEF OF HIGHWAY ENGINEER

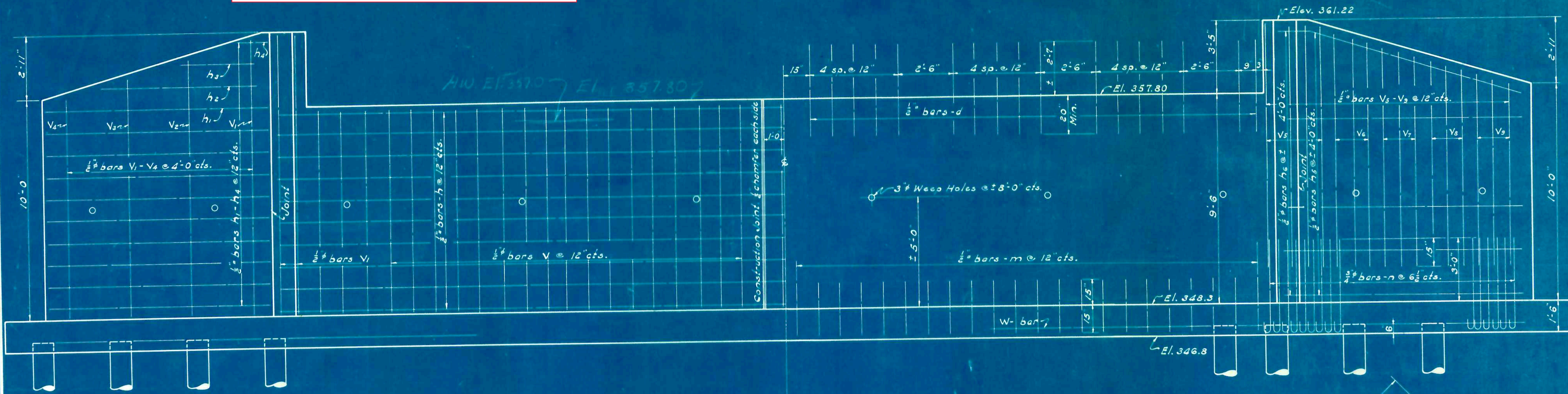


PROJECT 229-B-118-A
SEC. 108-B-1 STA. 510+21
LIVINGSTON COUNTY

**ORIGINAL STRUCTURAL PLANS
FOR INFORMATION ONLY**

STATE OF ILLINOIS
DEPARTMENT OF PUBLIC WORKS & BUILDINGS
DIVISION OF HIGHWAYS

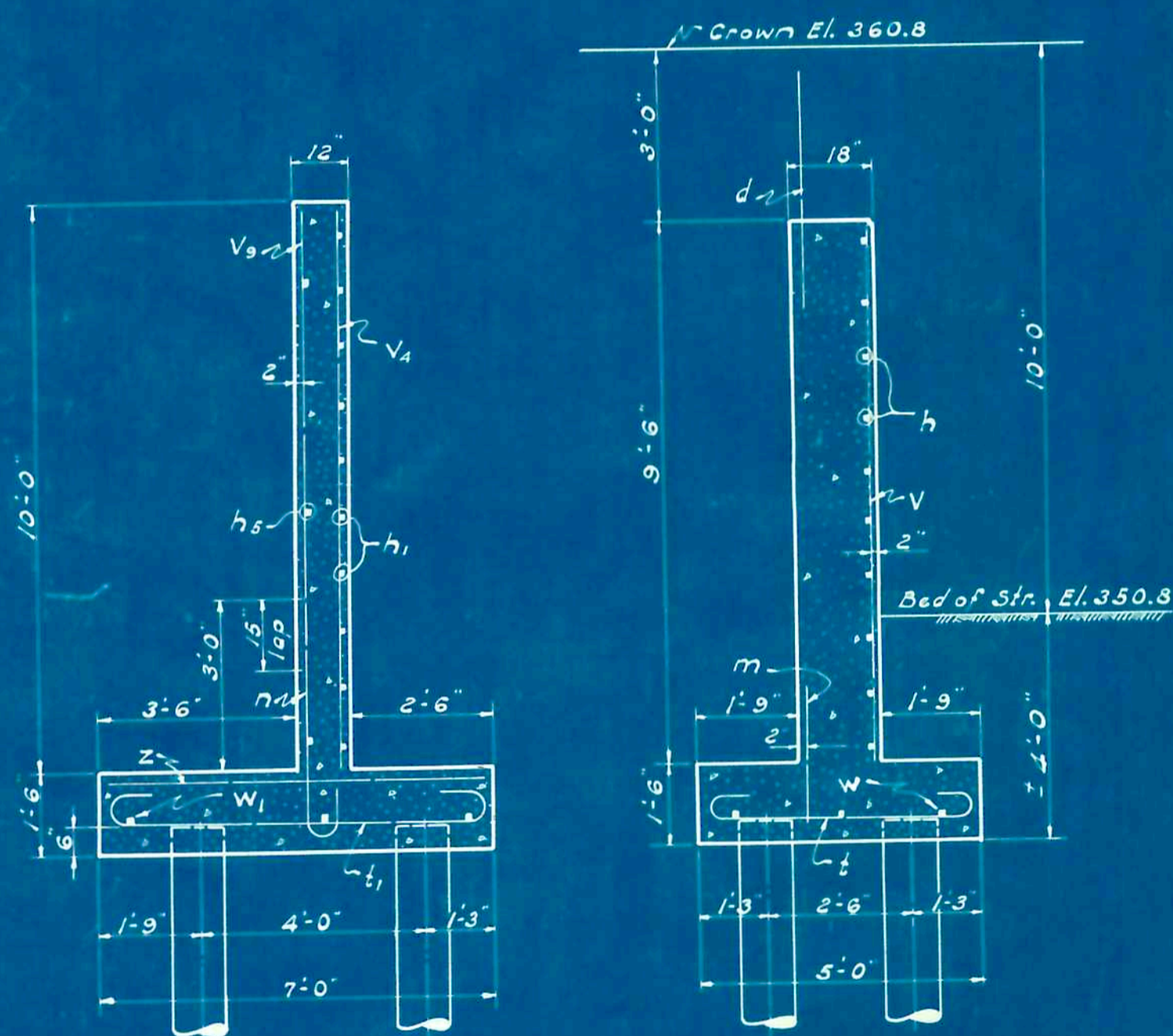
| | | | | |
|------------------|---------|------------|--------------|-----------|
| ROAD DIST. NO. 7 | SECTION | COUNTY | TOTAL SHEETS | SHEET NO. |
| 110A | 108B-1 | Livingston | 34 | 24 |
| ILLINOIS | PROJECT | | 229B | SHEETS |



SHOWING FRONT FACE STEEL

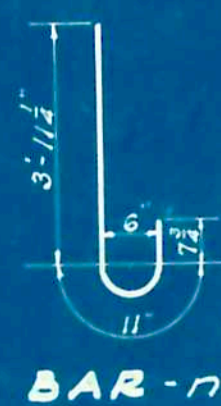
ELEVATION

SHOWING REAR FACE STEEL

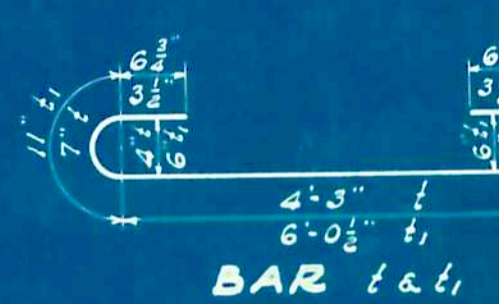


END OF WING WALL

ABUTMENT SECTION



BAR-n



BAR-t & l

BILL OF MATERIAL

| Bar | No. | Size | Length |
|-----|-----|------|--------|
| d | 68 | 1/2" | 4'-3" |
| h | 40 | " | 24'-3" |
| h1 | 40 | " | 13'-0" |
| h2 | 4 | " | 10'-6" |
| h3 | 4 | " | 6'-3" |
| h4 | 4 | " | 2'-3" |
| h5 | 20 | 1/2" | 13'-3" |
| m | 88 | 1/2" | 2'-6" |
| n | 108 | 3/4" | 5'-6" |
| t | 96 | 1/2" | 6'-0" |
| l | 132 | 3/4" | 9'-0" |
| V | 86 | 1/2" | 9'-3" |
| V1 | 12 | " | 12'-9" |
| V2 | 4 | 1/2" | 11'-9" |
| V3 | 4 | 1/2" | 10'-9" |
| V4 | 4 | " | 9'-9" |
| V5 | 16 | 1/2" | 11'-0" |
| V6 | 12 | " | 10'-6" |
| V7 | 12 | " | 9'-9" |
| W | 12 | " | 24'-6" |
| W1 | 24 | " | 15'-0" |
| Y8 | 12 | " | 9'-0" |
| Y9 | 12 | " | 8'-3" |
| h6 | 12 | 1/2" | 1'-3" |
| z | 60 | 1/2" | 6'-6" |

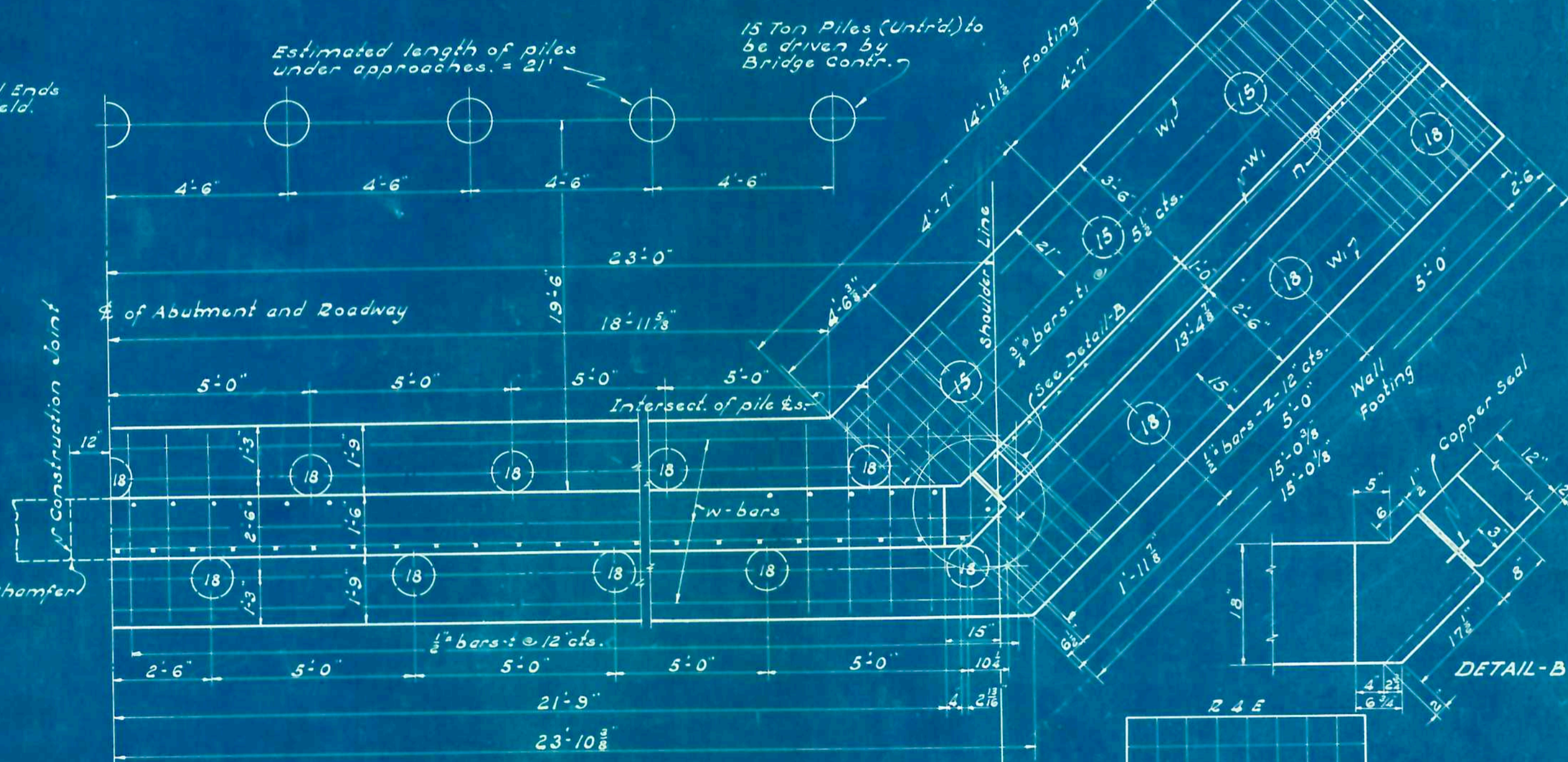
Class X Concrete cu yds. 122.5
Reinforcing Steel lbs. 7430
Untr. Piles 28'lg. lin. ft. 336
Untr. Piles 32'lg. lin. ft. 1600
Test Pile each 1
Approach Piles 21'lg. lin. ft. 378

* Untreated



BORING LOG

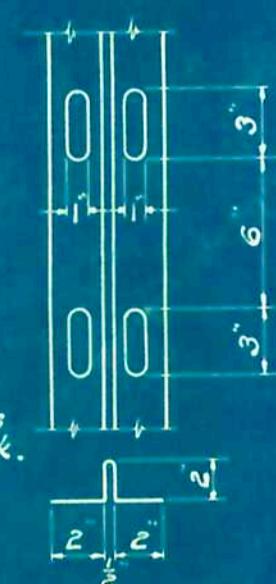
Sta. 503+97 on E
Note: At Sta. 510+47 8'21" of C.L. rods were driven from G.L. Elev. 359.3 to Elev. 304.8 before refusal to penetrate.



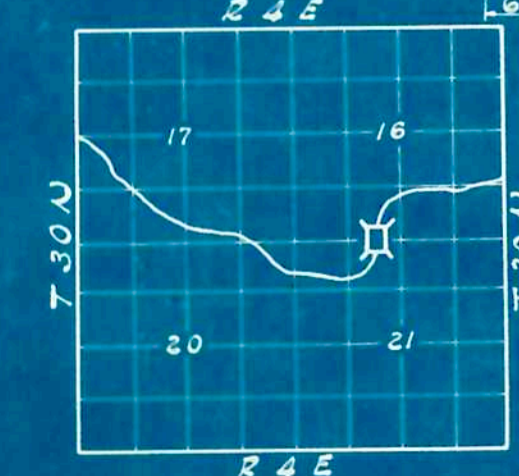
HALF PLAN OF ABUTMENT

- (15) 15 Ton Untr. Piles (12 Req'd.) Estimated Length - 28'-0"
- (18) 18 Ton Untr. Piles (50 Req'd.) Estimated Length - 32'-6"

Log of borings shown as a guide to bidders in estimating soil conditions which may be encountered in the work.



DETAIL OF COPPER SEAL (PERFORATED)



LOCATION PLAT

| | |
|----------|----------------------|
| COMPUTED | S. G. Martin |
| CHECKED | W. L. Collins |
| DRAWN | J. G. M. & L. Ludwig |
| CHECKED | W. L. G. |
| SPECIAL | ASSEMBLED |
| | CHECKED |

| | |
|----------|---------------|
| EXAMINED | 3-19-1937 |
| | H. J. Smith |
| PASSED | Alfred J. ... |
| APPROVED | Earl ... |

PROJ. 229B
RTE. 118A SEC. 108 B-1
LIVINGSTON COUNTY
STA. 510+21