

09/23/2022 LETTING ITEM 052

STATE OF ILLINOIS
DIVISION OF TRANSPORTATION

F.R. RTE.	SECTION	COUNTY	TOTAL SHEETS	SHEET NO.
3579	20-00524 01-SP	KANE	22	3
		ILLINOIS	CONTRACT NO. 61H97	

FOR INDEX OF SHEETS, SEE SHEET NO. 2
 FOR LIST OF HIGHWAY STANDARDS, SEE SHEET NO. 2
 VILLAGE OF MONTGOMERY
 TRAFFIC DATA
 DESIGN DESIGNATION: MINOR ARTERIAL
 ADT: 12,400 (2024) (6% TRUCKS)
 DESIGN SPEED: 30 MPH
 POSTED SPEED: 30 MPH

PLANS FOR PROPOSED ROADWAY RECONSTRUCTION

FAU ROUTE 3579 (MONTGOMERY ROAD)
 MONTGOMERY ROAD AT VIRGIL GILMAN TRAIL
 CROSSING AND INTERSECTION SAFETY IMPROVEMENTS
 SECTION NO. 20-00524-01-SP
 PROJECT NO. E71C(186)
 KANE COUNTY



FEDERAL AID PROGRAM ENGINEER: CARMEN E. RAMOS, P.E., SCHAUMBURG, IL

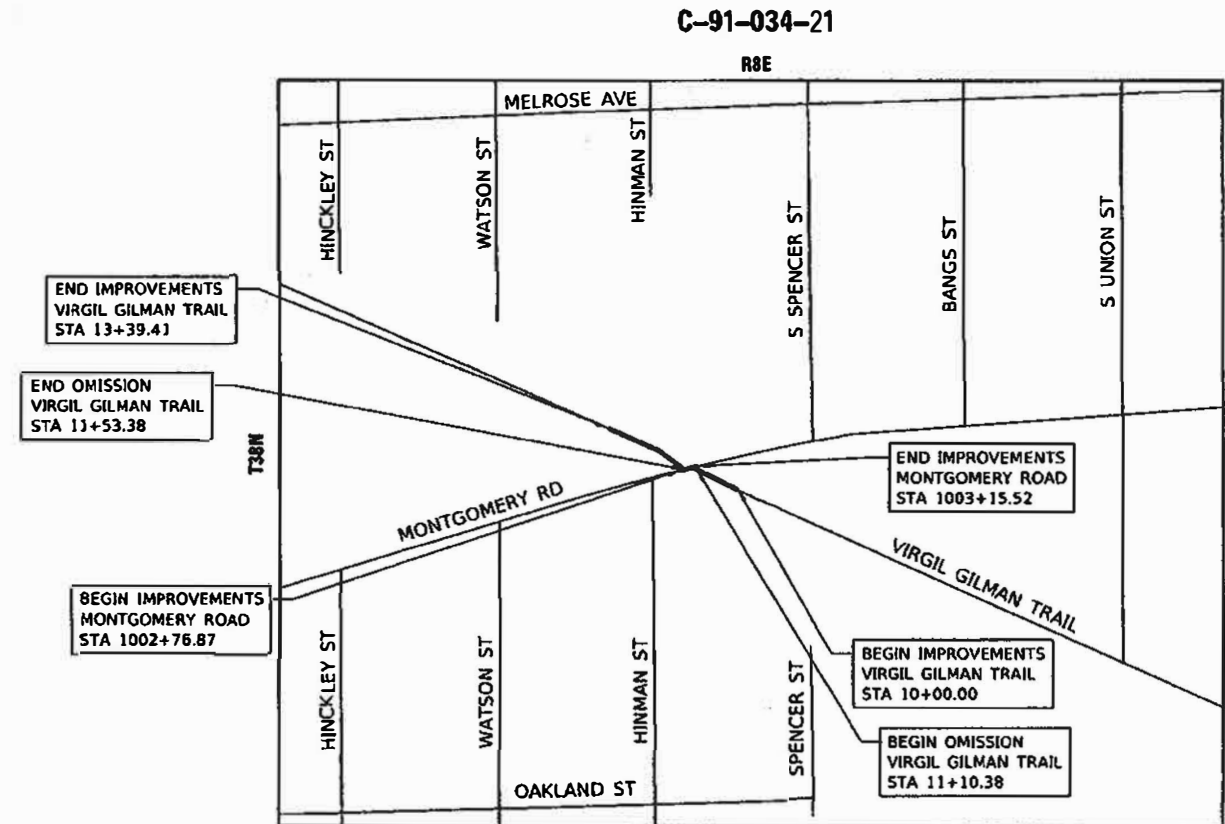


FULL SIZE PLANS HAVE BEEN PREPARED USING STANDARD ENGINEERING SCALES. REDUCED SIZED PLANS WILL NOT CONFORM TO STANDARD SCALES. IN MAKING MEASUREMENTS ON REDUCED PLANS, THE ABOVE SCALES MAY BE USED.

J.U.L.I.E.
 JOINT UTILITY LOCATION INFORMATION FOR EXCAVATORS
 1-800-892-0123
 OR 811

PROJECT MANAGER SAGAR SONAR, P.E., PTOE
 PROJECT ENGINEER JEFF STANKO, P.E.

CONTRACT NO. 61H97



R8E
 LOCATION MAP
 SCALE: 1" = 200'

GROSS LENGTH = 335.06 FT. = 0.063 MILE
 NET LENGTH = 335.06 FT. = 0.063 MILE



DATE: JUNE 19 2022

Kimley»Horn

© 2021 KIMLEY-HORN AND ASSOCIATES, INC.
 4201 WINFIELD ROAD, SUITE 800
 WARRENVILLE, IL 60555
 PHONE 630-487-6660
 WWW.KIMLEY-HORN.COM

STATE OF ILLINOIS DEPARTMENT OF TRANSPORTATION

APPROVED: July 20, 2022
 KANE COUNTY DIVISION OF TRANSPORTATION, COUNTY ENGINEER

PASSED: July 22, 2022
 DISTRICT ONE ENGINEER OF LOCAL ROADS AND STREETS

RELEASING FOR BID
 BASED ON LIMITED
 REVIEW: July 22, 2022
 REGIONAL ENGINEER

PRINTED BY THE AUTHORITY
 OF THE STATE OF ILLINOIS

INDEX OF SHEETS

1	TITLE SHEET
2	INDEX OF SHEETS, HIGHWAY STANDARDS AND GENERAL NOTES
3	6 SUMMARY OF QUANTITIES
7	TYPICAL SECTIONS
8	ALIGNMENT
9	REMOVAL PLAN
10	PLAN AND PROFILE
11	MAINTENANCE OF TRAFFIC PLAN
12	DRAINAGE & EROSION CONTROL PLAN
13	INTERSECTION RAMP DETAIL
14	PARKING LOT GRADING PLAN
15	SIGNAL, PAVEMENT MARKING AND SIGNING PLAN
16	MISCELLANEOUS DETAILS
17	22 DISTRICT ONE STANDARDS

HIGHWAY STANDARDS

280001-07	TEMPORARY EROSION CONTROL SYSTEMS
424001-11	PERPENDICULAR CURB RAMP FOR SIDEWALKS
606001-08	CONCRETE CURB TYPE B AND COMBINATION CONCRETE CURB AND GUTTER
606006-04	OUTLETS FOR CONCRETE CURB AND GUTTER TYPE B-6.24 (B-15.60)
701001-02	OFF-ROAD OPERATIONS, 2L, 2W, MORE THAN 15' AWAY
701006-05	OFF-ROAD OPERATIONS, 2L, 2W, 15' TO 24" FROM PAVEMENT EDGE
701301-04	LANE CLOSURE, 2L, 2W, SHORT TIME OPERATIONS
701311-03	LANE CLOSURE, 2L, 2W, MOVING OPERATIONS - DAY ONLY
701501-06	URBAN LANE CLOSURE, 2L, 2W, UNDIVIDED
701801-06	SIDEWALK, CORNER OR CROSSWALK CLOSURE
701901-08	TRAFFIC CONTROL DEVICES
720001-01	SIGN PANEL MOUNTING DETAILS
878001-11	CONCRETE FOUNDATION DETAILS

DISTRICT 1 STANDARDS

BD-01	DRIVEWAY DETAILS - DISTANCE BETWEEN ROW AND FACE OF CURB GREATER THAN 15'
BD-03	OUTLET FOR CONCRETE CURB AND GUTTER
BD-24	CURB OR CURB AND GUTTER REMOVAL AND REPLACEMENT
BD-32	BUTT JOINT AND HMA TAPER DETAILS
TC-10	TRAFFIC CONTROL AND PROTECTION FOR SIDE ROADS, INTERSECTIONS, AND DRIVEWAYS
TC-13	TYPICAL PAVEMENT MARKINGS

GENERAL NOTES

1. ALL CONSTRUCTION SHALL BE DONE ACCORDING TO THE STATE OF ILLINOIS "STANDARD SPECIFICATIONS FOR ROAD AND BRIDGE CONSTRUCTION" ADOPTED JANUARY 1, 2022; THE "SUPPLEMENTAL SPECIFICATIONS AND RECURRING SPECIAL PROVISIONS, ADOPTED JAN 1, 2022; THE LATEST EDITION OF THE "ILLINOIS MANUAL ON UNIFORM TRAFFIC CONTROL DEVICES FOR STREETS AND HIGHWAYS; THE DETAILS IN THESE PLANS, AND THE SPECIAL PROVISIONS INCLUDED IN THE CONTRACT DOCUMENTS.
2. THE CONTRACTOR SHALL COORDINATE ALL CONSTRUCTION ACTIVITIES WITH UTILITY COMPANIES, KANE COUNTY, AND WITH ANY OTHER ROADWAY PROJECTS WITHIN THE AREA THAT ARE UNDER CONSTRUCTION AT THE SAME TIME.
3. THE CONTRACTOR SHALL BE RESPONSIBLE FOR VERIFYING ALL DIMENSIONS AND EXISTING CONDITIONS IN THE FIELD PRIOR TO CONSTRUCTION AND ORDERING MATERIAL.
4. THE CONTRACTOR SHALL LIMIT HIS/HER CONSTRUCTION ACTIVITIES TO THE WORK AREAS DESIGNATED ON THE PLANS. ANY DAMAGE TO AREAS OUTSIDE OF THESE LIMITS SHALL BE REPAIRED BY THE CONTRACTOR AT HIS OWN EXPENSE TO THE SATISFACTION OF THE ENGINEER.
5. THE CONTRACTOR SHALL SOLELY BE RESPONSIBLE FOR THE INSTALLATION AND MAINTENANCE OF ADEQUATE SIGNS, TRAFFIC CONTROL DEVICES, AND WARNING DEVICES TO INFORM AND PROTECT THE PUBLIC DURING ALL PHASES OF CONSTRUCTION.
6. THE CONTRACTOR SHALL INFORM THE FOX VALLEY PARK DISTRICT AT 630-966-4512 72 HOURS PRIOR TO BEGINNING CONSTRUCTION ACTIVITIES.
7. UTILITIES
 - A. THE APPROXIMATE LOCATIONS OF EXISTING UTILITIES ARE SHOWN ON THE DRAWINGS ACCORDING TO INFORMATION OBTAINED FROM UTILITY COMPANIES AND SURVEYS. THE CONTRACTOR SHALL BE RESPONSIBLE TO FIELD CHECK AND VERIFY ALL EXISTING UTILITY LOCATIONS, DIMENSIONS AND ELEVATIONS IN THE FIELD PRIOR TO THE COMMENCEMENT OF CONSTRUCTION OF THE IMPROVEMENTS OR PROPOSED WORK. THE CONTRACTOR SHALL REPORT TO THE ENGINEER ANY OMISSIONS OR DISCREPANCIES FROM THE LOCATIONS SHOWN ON THE DRAWINGS.
 - B. THE CONTRACTOR SHALL BE RESPONSIBLE FOR THE PROTECTION OF ALL UNDERGROUND OR SURFACE UTILITIES EVEN THOUGH THEY MAY NOT BE SHOWN ON THE PLANS. ANY UTILITY THAT IS DAMAGED DURING CONSTRUCTION SHALL BE REPAIRED OR REPLACED TO THE SATISFACTION OF THE ENGINEER. THIS WORK SHALL BE AT THE CONTRACTOR'S EXPENSE.
 - C. BEFORE STARTING ANY EXCAVATION, THE CONTRACTOR SHALL CALL "JULIE" AT 8-1-1 FOR FIELD LOCATIONS OF BURIED ELECTRIC, TELEPHONE, GAS AND CABLE TELEVISION FACILITIES (48-HOUR NOTIFICATION IS REQUIRED).
8. STAKING
 - A. THE CONTRACTOR SHALL PROTECT AND CAREFULLY PRESERVE ALL SECTION OR SUBSECTION MONUMENTS OR PROPERTY OR REFERENCE MARKERS UNTIL THE ENGINEER, ITS AGENT, OR AN AUTHORIZED SURVEYOR HAS WITNESSED OR OTHERWISE REFERENCED THEIR LOCATIONS.
9. SOIL EROSION AND SEDIMENT CONTROL
 - A. SOIL EROSION AND SEDIMENT CONTROL (SESC) FEATURES MUST BE CONSTRUCTED PRIOR TO THE COMMENCEMENT OF UPLAND DISTURBANCE. SOIL DISTURBANCE MUST BE PHASED OR ENACTED IN SUCH A MANNER AS TO MINIMIZE EROSION. SOIL STABILIZATION MEASURES MUST CONSIDER THE TIME OF YEAR, SITE CONDITIONS AND THE USE OF TEMPORARY AND/OR PERMANENT MEASURES.
 - B. UNLESS OTHERWISE INDICATED, ALL VEGETATIVE AND STRUCTURAL EROSION AND SEDIMENT CONTROL PRACTICES WILL BE INSTALLED AT MINIMUM ACCORDING TO THE STANDARDS AND SPECIFICATIONS IN THE ILLINOIS URBAN MANUAL, REVISED TO LATEST VERSION AS AMENDED. A COPY OF THE APPROVED SOIL EROSION AND SEDIMENT CONTROL (SESC) PLAN AND THE STORM WATER POLLUTION PREVENTION PLAN (SWPPP) MUST BE MAINTAINED ON THE SITE AT ALL TIMES.
 - C. THE EROSION AND SEDIMENT CONTROLS SHOWN ON THE PLANS ARE THE MINIMUM REQUIREMENTS. ADDITIONAL MEASURES MAY BE REQUIRED AS DIRECTED BY THE COUNTY OR THEIR AUTHORIZED REPRESENTATIVE. ALL ADDITIONAL MEASURES MUST BE IN PLACE WITHIN 3 DAYS OF DISTURBANCE AND ANY EMERGENCY SESC MEASURES MUST BE INSTALLED IMMEDIATELY.
 - D. THE CONTRACTOR MUST CLEAN UP, GRADE THE WORK AREAS AS THE PROJECT PROGRESSES, AND INSTALL TEMPORARY OR PERMANENT EROSION PROTECTION TO CONTROL SOIL EROSION, OR INSTALL APPROPRIATE SEDIMENT CONTROL DEVICES TO TRAP SEDIMENT. PAVEMENT MUST BE CLEANED DAILY OR AS NECESSARY TO REMOVE TRACK-OUT MATERIAL.
- E. DURING DE-WATERING/PUMPING OPERATIONS, ONLY UNCONTAMINATED WATER SHOULD BE ALLOWED TO DISCHARGE TO PROTECTED NATURAL AREAS, WATERS OF THE STATE, OR TO A STORM SEWER SYSTEM (IN ACCORDANCE WITH LOCAL PERMITS). INLET HOSES SHOULD BE FLOATED AT THE SURFACE OF THE WATER IN ORDER TO LIMIT THE AMOUNT OF SEDIMENT INTAKE. PUMPING OPERATIONS MAY BE DISCHARGED TO A STABILIZED AREA THAT CONSISTS OF AN ENERGY DISSIPATING DEVICE (E.G. STONE), SEDIMENT FILTER BAG, OR BOTH. ADEQUATE EROSION AND SEDIMENT CONTROLS SHOULD BE USED DURING DE-WATERING OPERATIONS AS NECESSARY. DEWATERING SEDIMENT LADEN WATER DIRECTLY INTO FIELD TILES, STORM WATER STRUCTURES, OR "WATERS OF THE US" IS PROHIBITED.
- F. CONSTRUCTION ACTIVITIES MUST BE SCHEDULED TO MINIMIZE THE TIME SOIL IS EXPOSED AND UNPROTECTED. IN NO CASE WILL THE EXISTING VEGETATION BE DESTROYED, REMOVED, OR DISTURBED MORE THAN FOURTEEN (14) DAYS PRIOR TO THE INITIATION OF IMPROVEMENTS.
- G. ALL DISTURBED SOILS ARE TO BE STABILIZED, TEMPORARILY OR PERMANENTLY, WITHIN SEVEN (7) DAYS OF CONSTRUCTION ACTIVITY HAVING CEASED IF THE SOIL IS TO REMAIN UNDISTURBED FOR MORE THAN FOURTEEN (14) DAYS.
- H. CONTRACTOR MUST INSTALL PERIMETER EROSION BARRIER AT ANY LOCATION IN WHICH SHEET FLOWS MAY RESULT IN SEDIMENT RUNOFF OUTSIDE THE CONSTRUCTION LIMITS. THE CONTRACTOR MAY USE OTHER METHODS TO CONTROL RUNOFF, INCLUDING, BUT NOT LIMITED TO, TEMPORARY SEDIMENT TRAPS, SHAPED DITCHES TO CONVEY WATER, ETC.
- I. KANE COUNTY OR THEIR AUTHORIZED REPRESENTATIVE MUST MAKE INSPECTIONS A MINIMUM OF ONCE EVERY SEVEN DAYS OF THE FOLLOWING: 1) DISTURBED AREAS OF THE PROJECT SITE THAT HAVE NOT BEEN FULLY STABILIZED, 2) STRUCTURAL CONTROL MEASURES (SILT FENCES, ETC.), AND 3) LOCATIONS WHERE VEHICLES ENTER AND EXIT THE SITE. AN ADDITIONAL INSPECTION OF THE ITEMS LISTED ABOVE MUST BE MADE WITHIN TWENTY-FOUR (24) HOURS OF A 0.5-INCH OR GREATER RAINFALL OR EQUIVALENT SNOWFALL.
10. MAINTENANCE OF TRAFFIC
 - A. THE CONTRACTOR SHALL MAINTAIN SAFE ACCESS TO THE EXISTING TRAIL FOR THE DURATION OF CONSTRUCTION OF PROPOSED IMPROVEMENTS.
11. MISCELLANEOUS
 - A. THE THICKNESS OF HOT-MIX ASPHALT MIXTURES SHOWN IN THE PLANS ARE NOMINAL. DEVIATIONS MAY OCCUR DUE TO IRREGULARITIES IN THE SURFACES OR BASIS ON WHICH THEY ARE TO BE PLACED.
 - B. ALL SAWCUTTING SHALL BE PERFORMED PRIOR TO BEGINNING REMOVAL.
 - C. LOCATIONS FOR PAVEMENT PATCHING WILL BE DETERMINED BY THE ENGINEER IN THE FIELD.
 - D. WHEN REMOVING PAVEMENT, CURB AND GUTTER, SHOULDER, AND/OR OTHER STRUCTURES, THE USE OF ANY TYPE OF CONCRETE BREAKERS, WHICH MIGHT DAMAGE UNDERGROUND PUBLIC OR PRIVATE UTILITIES, WILL NOT BE PERMITTED. UNDER NO CIRCUMSTANCES WILL THE USE OF A FROST BALL BE PERMITTED. THE CONTRACTOR IS PROHIBITED FROM BREAKING UP CONCRETE BY DROPPING IT ON THE PAVEMENT OR IN ANY OTHER MANNER, WHICH IN THE OPINION OF THE ENGINEER MAY DAMAGE EXISTING OR PROPOSED PAVEMENTS OR OTHER ROADWAY APPURTENANCES.
 - E. NO CONSTRUCTION SHALL BEGIN UNTIL ALL PROPER TEMPORARY SIGNS AND BARRICADES HAVE BEEN INSTALLED.
 - F. THE CONTRACTOR SHALL TAKE THE EXTRA CARE IN GRADING AND EXCAVATING NEAR TREES WHICH ARE NOT MARKED FOR REMOVAL SO AS NOT TO CAUSE INJURY TO THE ROOT SYSTEM OR TRUNKS. ANY DAMAGE DONE TO EXISTING ITEMS BY THE CONTRACTOR SHALL BE REPAIRED BY THE CONTRACTOR.
 - G. DURING THE CONSTRUCTION OPERATIONS WHEN ANY LOOSE MATERIAL IS DEPOSITED IN THE FLOW LINE OF DITCHES, GUTTERS OR DRAINAGE STRUCTURES SO THE NATURAL FLOW OF WATER IS OBSTRUCTED, THE MATERIAL SHALL BE REMOVED AT THE CLOSE OF EACH WORKING DAY. AT THE CONCLUSION OF THE CONSTRUCTION OPERATIONS ALL DRAINAGE STRUCTURES SHALL BE FREE FROM ALL DIRT AND DEBRIS CAUSED BY THE CONSTRUCTION.
 - H. THE AGGREGATE GRADATION FOR THE AGGREGATE SUBGRADE IMPROVEMENT 12" LOWER LIFT SHALL BE CS 1 OR RR 1.

MODEL: Default
 FILE NAME: K:\C\45\TPO\168317003_Montgomery_Road_Kane_County\Phase B\2_Design\CAD\Plan_Sheets\168317003-pln-gennotes.dgn



© 2017 KIMLEY-HORN AND ASSOCIATES, INC.
 400 WINDFIELD ROAD, SUITE 100
 WARRENVILLE, IL 60555
 PHONE: 630-467-5500
 WWW.KIMLEY-HORN.COM

USER NAME = Kellen.Hinchey	DESIGNED = LMB	REVISED =
	DRAWN = LMB	REVISED =
PLOT SCALE = 2.0000' / in.	CHECKED = SS	REVISED =
PLOT DATE = 7/13/2022	DATE = 7/13/2022	REVISED =

KANE COUNTY DIVISION OF TRANSPORTATION

INDEX OF SHEETS, HIGHWAY STANDARDS AND GENERAL NOTES MONTGOMERY ROAD AT VIRGIL GILMAN TRAIL

SCALE: NTS SHEET 1 OF 1 SHEETS STA. TO STA.

F.A.U. RTE.	SECTION	COUNTY	TOTAL SHEETS	SHEET NO.
3579	20-00524-01-SP	KANE	22	2
CONTRACT NO. 61H97				
ILLINOIS FED. AID PROJECT				

CODE NO.	ITEM	UNIT	TOTAL QUANTITY	CONSTRUCTION CODE	
				90% FED 10% LOCAL ROADWAY	90% FED 10% LOCAL TRAFFIC SIGNALS
				0021	0021
				URBAN	URBAN
# 20100110	TREE REMOVAL (6 TO 15 UNITS DIAMETER)	UNIT	76	76	
20101000	TEMPORARY FENCE	FOOT	249	249	
20200100	EARTH EXCAVATION	CU YD	125	125	
21101505	TOPSOIL EXCAVATION AND PLACEMENT	CU YD	320	320	
21101615	TOPSOIL FURNISH AND PLACE, 4"	SQ YD	187	187	
25000210	SEEDING, CLASS 2A	ACRE	0.32	0.32	
25000400	NITROGEN FERTILIZER NUTRIENT	POUND	29	29	
25000500	PHOSPHORUS FERTILIZER NUTRIENT	POUND	29	29	
25000600	POTASSIUM FERTILIZER NUTRIENT	POUND	29	29	
25100630	EROSION CONTROL BLANKET	SQ YD	1540	1540	
28000250	TEMPORARY EROSION CONTROL SEEDING	POUND	32	32	
28000400	PERIMETER EROSION BARRIER	FOOT	671	671	
* 30300112	AGGREGATE SUBGRADE IMPROVEMENT 12"	SQ YD	39	39	
35102000	AGGREGATE BASE COURSE, TYPE B 8"	SQ YD	331	331	

* DENOTES SPECIAL PROVISION

DENOTES SPECIALTY ITEM

MODEL DRAWING
 FILE NAME: KCC05_T1031031_1031_BldgSupply Road Plan - ErosionControl.dwg
 DWG DATE: 7/13/2022
 PLOT DATE: 7/13/2022



USER NAME = Kellen.Hinchey	DESIGNED - KKH	REVISED -
FLOT SCALE = 2.0000' / 1"	DRAWN - KKH	REVISED -
FLOT DATE = 7/13/2022	CHECKED - SS	REVISED -
	DATE - 7/13/2022	REVISED -

**KANE COUNTY
DIVISION OF TRANSPORTATION**

**SUMMARY OF QUANTITIES
MONTGOMERY ROAD AT VIRGIL GILMAN TRAIL**

SCALE: N/A SHEET 1 OF 4 SHEETS STA. TO STA.

F.A.U. RTE.	SECTION	COUNTY	TOTAL SHEETS	SHEET NO.
3579	20-00524-01-SP	KANE	22	3
			CONTRACT NO. 61H97	
ILLINOIS FED. AID PROJECT				

CODE NO.	ITEM	UNIT	TOTAL QUANTITY	CONSTRUCTION CODE	
				90% FED 10% LOCAL	90% FED 10% LOCAL
				ROADWAY	TRAFFIC SIGNALS
				0021 URBAN	0021 URBAN
44201690	CLASS D PATCHES, TYPE I, 4 INCH	SQ YD	21	21	
48101500	AGGREGATE SHOULDERS, TYPE B 6"	SQ YD	81	81	
48203029	HOT-MIX ASPHALT SHOULDERS, 8"	SQ YD	39	39	
60603800	COMBINATION CONCRETE CURB AND GUTTER, TYPE B-6.12	FOOT	164.5	164.5	
67000400	ENGINEER'S FIELD OFFICE, TYPE A	CAL MO	2	2	
67100100	MOBILIZATION	L SUM	1	1	
70102620	TRAFFIC CONTROL AND PROTECTION, STANDARD 701501	L SUM	1	1	
70106800	CHANGEABLE MESSAGE SIGN	CAL MO	4	4	
70307160	TEMPORARY PAVEMENT MARKING - LINE 12"- TYPE IV TAPE	FOOT	180	180	
# 72000100	SIGN PANEL - TYPE 1	SQ FT	53	53	
# 72400500	RELOCATE SIGN PANEL ASSEMBLY - TYPE A	EACH	2	2	
# 72800100	TELESCOPING STEEL SIGN SUPPORT	FOOT	193	193	
# 73400200	DRILLED SHAFT CONCRETE FOUNDATIONS	CU YD	1		1
# 78009000	MODIFIED URETHANE PAVEMENT MARKING - LETTERS AND SYMBOLS	SQ FT	36	36	

* DENOTES SPECIAL PROVISION

DENOTES SPECIALTY ITEM

MODEL: I:\cadd\KANSAS\TTC0161317003_Hazlemonty_Road_kane_County\mxd\B2_DeSign\CAUR_psn_Sheets\108312004-INT-500_03.dwg
 FILE NAME: KANSAS_TTC0161317003_Hazlemonty_Road_kane_County\mxd\B2_DeSign\CAUR_psn_Sheets\108312004-INT-500_03.dwg



USER NAME = Kellen.Hinchey	DESIGNED - KKH	REVISED -
PLOT SCALE = 2.0000' / in.	DRAWN - KKH	REVISED -
PLOT DATE = 7/13/2022	CHECKED - SS	REVISED -
	DATE - 7/13/2022	REVISED -

**KANE COUNTY
DIVISION OF TRANSPORTATION**

**SUMMARY OF QUANTITIES
MONTGOMERY ROAD AT VIRGIL GILMAN TRAIL**

SCALE: N/A | SHEET 3 OF 4 SHEETS | STA. TO STA.

F.A.U. RTE.	SECTION	COUNTY	TOTAL SHEETS	SHEET NO.
3579	20-00524-01-5P	KANE	22	5
CONTRACT NO. 61H97			ILLINOIS FED. AID PROJECT	

CODE NO.	ITEM	UNIT	TOTAL QUANTITY	CONSTRUCTION CODE	
				90% FED 10% LOCAL	90% FED 10% LOCAL
				ROADWAY	TRAFFIC SIGNALS
				0021 URBAN	0021 URBAN
# 78009004	MODIFIED URETHANE PAVEMENT MARKING - LINE 4"	FOOT	839	839	
# 78009008	MODIFIED URETHANE PAVEMENT MARKING - LINE 8"	FOOT	37	37	
# 78009012	MODIFIED URETHANE PAVEMENT MARKING - LINE 12"	FOOT	130	130	
# 78009024	MODIFIED URETHANE PAVEMENT MARKING - LINE 24"	FOOT	32	32	
* X0301339	REMOVE EXISTING PARKING BLOCKS	EACH	5	5	
* X0323378	CONCRETE PARKING BLOCKS	EACH	11	11	
*# X1400326	RECTANGULAR RAPID FLASHING BEACON ASSEMBLY (COMPLETE)	EACH	1		1
* Z0013798	CONSTRUCTION LAYOUT	L SUM	1	1	

* DENOTES SPECIAL PROVISION # DENOTES SPECIALTY ITEM

MODEL: D:\DWG\KANSAS\TTC016821\003_Montgomery_Road.kim County\make_B2_04c.pri\CA08_016_Spec\016821\003-04c-500.dwg
 FILE NAME: KANSAS\TTC016821\003_Montgomery_Road.kim County\make_B2_04c.pri\CA08_016_Spec\016821\003-04c-500.dwg



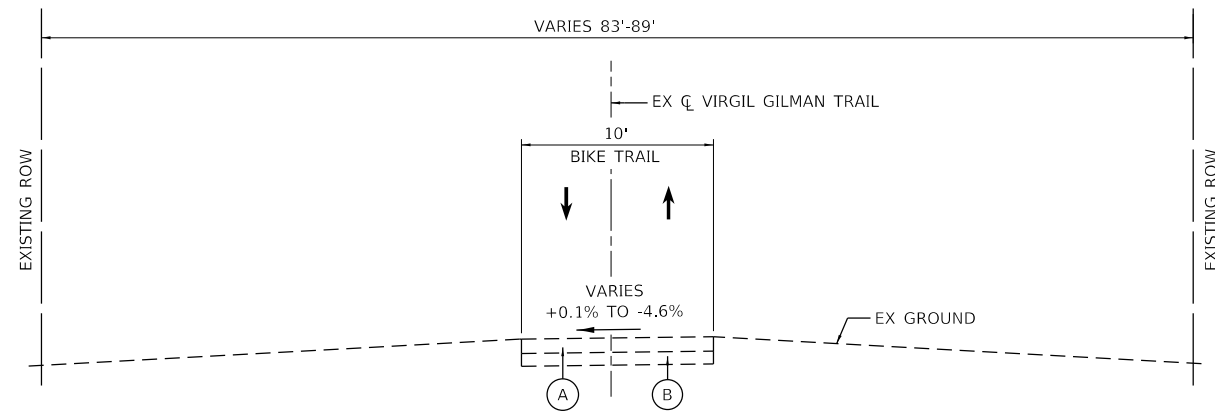
USER NAME = Kellen.Hinchey	DESIGNED - KKH	REVISED -
PLOT SCALE = 2.0000' / in.	DRAWN - KKH	REVISED -
PLOT DATE = 7/13/2022	CHECKED - SS	REVISED -
	DATE - 7/13/2022	REVISED -

**KANE COUNTY
DIVISION OF TRANSPORTATION**

SUMMARY OF QUANTITIES	
SECTION	COUNTY
20-00524-01-SP	KANE
CONTRACT NO. 61H97	

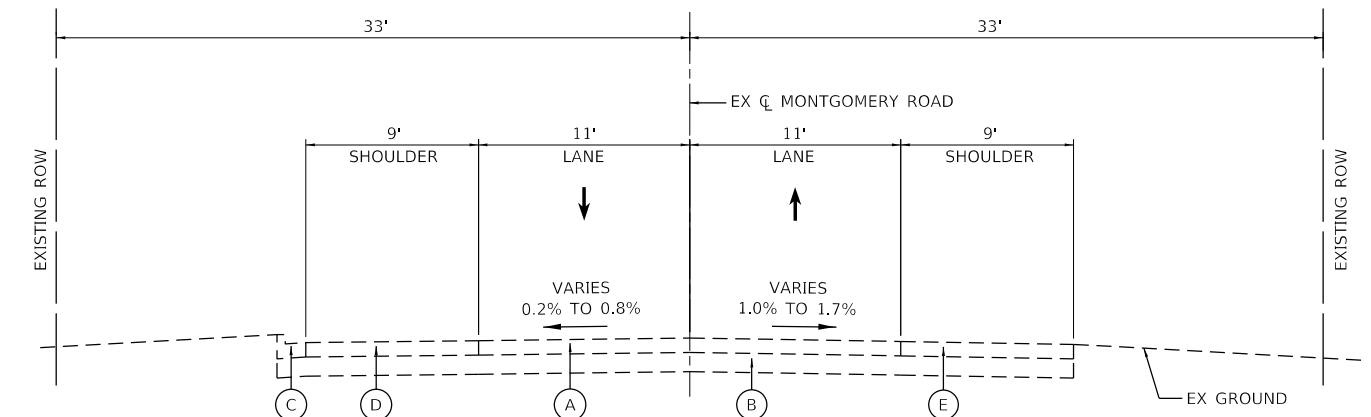
SCALE: N/A | SHEET 4 OF 4 SHEETS | STA. TO STA.

F.A.U. RTE. 3579	SECTION 20-00524-01-SP	COUNTY KANE	TOTAL SHEETS 22	SHEET NO. 6
ILLINOIS FED. AID PROJECT				



EXISTING TYPICAL SECTION

VIRGIL GILMAN TRAIL
 STA 10+00.00 TO STA 11+10.24
 STA 11+91.27 TO STA 13+39.41

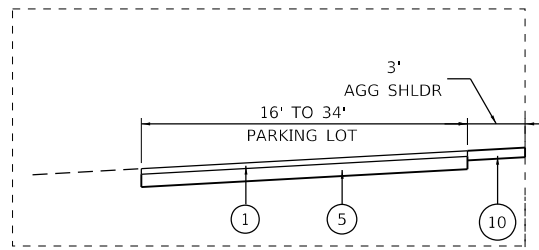


EXISTING TYPICAL SECTION

MONTGOMERY ROAD
 STA 1002+76.87 TO STA 1003+15.52

EXISTING LEGEND

- (A) HOT-MIX ASPHALT SURFACE AND BINDER COURSE
- (B) AGGREGATE SUBBASE
- (C) COMBINATION CONCRETE CURB AND GUTTER, TYPE B-6.12
- (D) PORTLAND CEMENT CONCRETE DRIVEWAY PAVEMENT
- (E) HOT-MIX ASPHALT SHOULDERS



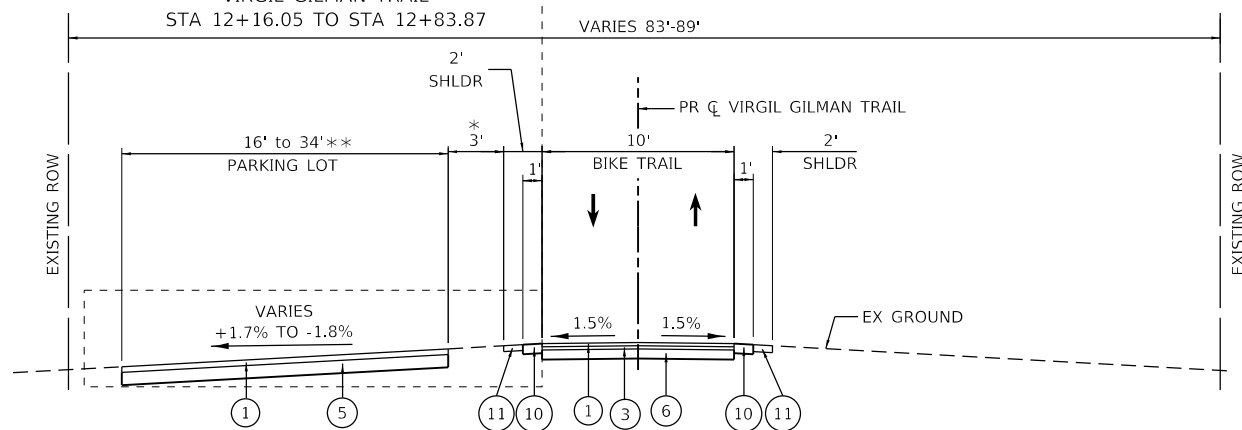
HOT-MIX ASPHALT MIXTURE REQUIREMENTS		QMP
MIXTURE TYPE	AIR VOIDS @Ndes	
PAVEMENT RESURFACING		
HOT-MIX ASPHALT SURFACE COURSE, MIX "D", IL-9.5, N70; 1.5"	4% @ 70 Gyr.	LR 1030-2
HOT-MIX ASPHALT BINDER COURSE, IL-9.5, N70; 1.5"	4% @ 70 Gyr.	LR 1030-2
HMA SHOULDER 8"		
HOT-MIX ASPHALT SURFACE COURSE, MIX "D", IL-9.5, N70; 1.5"	4% @ 70 Gyr.	LR 1030-2
HOT-MIX ASPHALT BINDER COURSE, IL-19.0, N70; 6.5"	4% @ 70 Gyr.	LR 1030-2
DRIVEWAYS		
HOT-MIX ASPHALT SURFACE COURSE, MIX "D", IL-9.5, N50; 2"	4% @ 50 Gyr.	LR 1030-2
HOT-MIX ASPHALT BASE COURSE (HMA BINDER IL-9.5 mm); CE - 8"	4% @ 50 Gyr.	LR 1030-2
BIKE PATH		
HOT-MIX ASPHALT SURFACE COURSE, MIX "D", IL-9.5, N50; 2"	4% @ 50 Gyr.	LR 1030-2
HOT-MIX ASPHALT BINDER COURSE, IL-9.5, N50; 2"	4% @ 50 Gyr.	LR 1030-2
CLASS D PATCHES		
HOT-MIX ASPHALT BINDER COURSE, IL-19.0	4% @ 70 Gyr.	LR 1030-2

THE UNIT WEIGHT USED TO CALCULATE ALL HMA SURFACE MIXTURE QUANTITIES IS 112 LBS/SQ YD/IN.

THE AC TYPE FOR POLYMERIZED HMA MIXES SHALL BE "SBS/SBR PG 76-22" AND FOR NON-POLYMERIZED HMA THE "AC TYPE" SHALL BE "PG 64-22", UNLESS MODIFIED BY RECLAIMED MATERIALS SPECIFICATIONS.

PROPOSED LEGEND

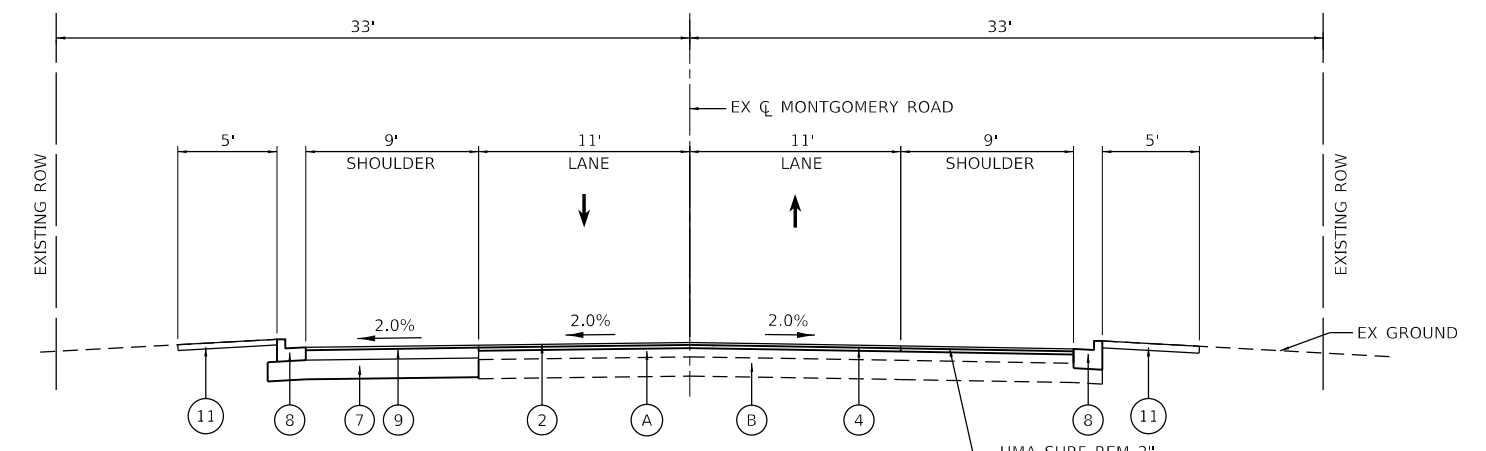
- (1) HOT-MIX ASPHALT SURFACE COURSE, MIX "D", IL-9.5, N50 - 2 INCH
- (2) HOT-MIX ASPHALT SURFACE COURSE, MIX "D", IL-9.5, N70 - 1.5 INCH
- (3) HOT-MIX ASPHALT BINDER COURSE, IL-9.5, N50 - 2 INCH
- (4) HOT-MIX ASPHALT BINDER COURSE, IL-9.5, N70 - 1.5 INCH
- (5) HOT-MIX ASPHALT BASE COURSE, 8 INCH
- (6) AGGREGATE BASE COURSE, TYPE B 8"
- (7) AGGREGATE SUBGRADE IMPROVEMENT, 12"
- (8) COMBINATION CONCRETE CURB AND GUTTER, TYPE B-6.12
- (9) HOT-MIX ASPHALT SHOULDER, 8 INCH
- (10) AGGREGATE SHOULDERS, TYPE B 6"
- (11) TOPSOIL EXCAVATION AND PLACEMENT 4 INCH



PROPOSED TYPICAL SECTION

VIRGIL GILMAN TRAIL
 STA 10+00.00 TO STA 11+10.33
 STA 11+53.34 TO STA 13+39.41

- * VARIES 2.5' TO 13' FROM STA 11+53.83 TO STA 12+26.89
- 0' FROM STA 12+26.89 TO STA 12+83.87
- ** 16' FROM STA 12+14.11 TO STA 12+33.87
- 34' FROM STA 12+33.87 TO STA 12+83.87
- 0' FROM STA 12+83.87 TO STA 13+39.41



PROPOSED TYPICAL SECTION

MONTGOMERY ROAD
 STA 1002+76.87 TO STA 1003+15.52



USER NAME = Kellen.Hinchey	DESIGNED - LMB	REVISED -
PLOT SCALE = 20.0000' / in.	DRAWN - LMB	REVISED -
PLOT DATE = 7/13/2022	CHECKED - SS	REVISED -
	DATE - 7/13/2022	REVISED -

**KANE COUNTY
 DIVISION OF TRANSPORTATION**

**TYPICAL SECTIONS
 MONTGOMERY ROAD AT VIRGIL GILMAN TRAIL**

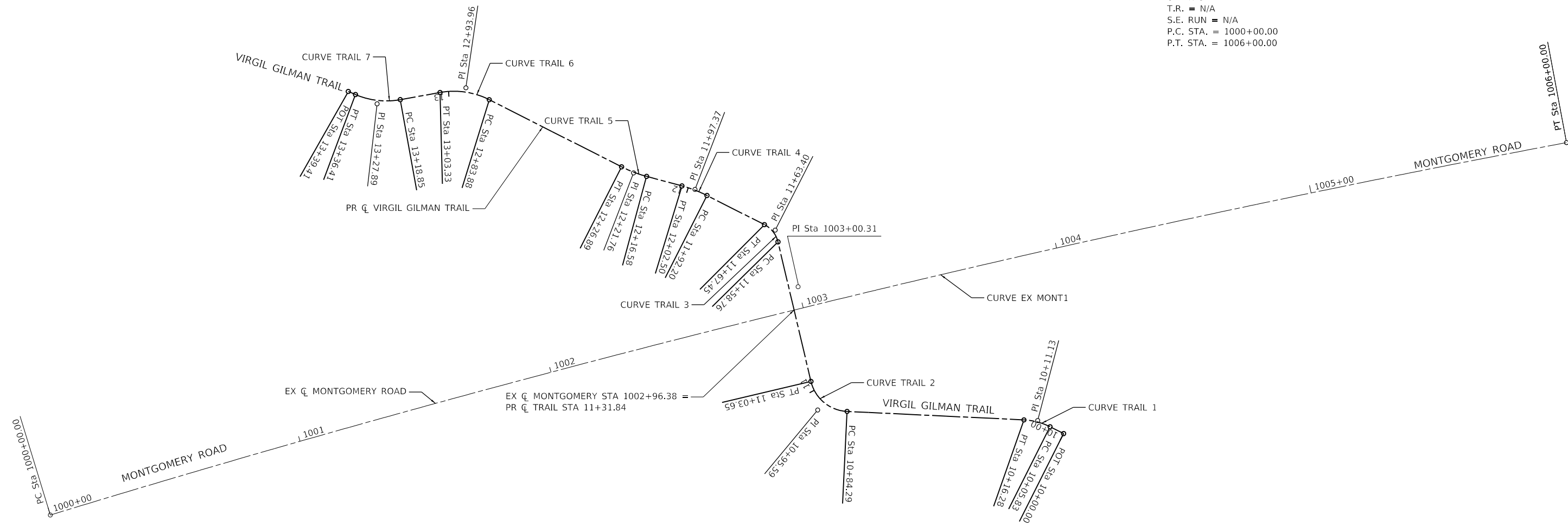
SCALE: NTS SHEET 1 OF 1 SHEETS STA. TO STA.

F.A.U. RTE.	SECTION	COUNTY	TOTAL SHEETS	SHEET NO.
3579	20-00524-01-5P	KANE	22	7
CONTRACT NO. 61H97				
ILLINOIS FED. AID PROJECT				

MODEL: Default
 FILE: M:\C:\C:\C\US_T\T\168317003_Montgomery_Road_Kane_County\Phase B2_Design\CADD_Plan_Sheets\168317003-shc-typical_01.dgn



EXIST. CURVE EX_MONT1
 PI STA. = 1003+00.31
 $\Delta = 6^\circ 21' 33''$ (RT)
 $D = 1^\circ 03' 35''$
 $R = 5,406.03'$
 $T = 300.31'$
 $L = 600.00'$
 $E = 8.33'$
 $e = \text{N.C.}$
 $T.R. = \text{N/A}$
 $S.E. \text{ RUN} = \text{N/A}$
 $P.C. \text{ STA.} = 1000+00.00$
 $P.T. \text{ STA.} = 1006+00.00$



PROP. CURVE TRAIL1 PI STA. = 10+11.13 $\Delta = 23^\circ 57' 24''$ (LT) $D = 229^\circ 10' 59''$ $R = 25.00'$ $T = 5.30'$ $L = 10.45'$ $E = 0.56'$ $e = \text{N.C.}$ $T.R. = \text{N/A}$ $S.E. \text{ RUN} = \text{N/A}$ $P.C. \text{ STA.} = 10+05.83$ $P.T. \text{ STA.} = 10+16.28$	PROP. CURVE TRAIL2 PI STA. = 10+95.59 $\Delta = 73^\circ 58' 29''$ (RT) $D = 381^\circ 58' 19''$ $R = 15.00'$ $T = 11.30'$ $L = 19.37'$ $E = 3.78'$ $e = \text{N.C.}$ $T.R. = \text{N/A}$ $S.E. \text{ RUN} = \text{N/A}$ $P.C. \text{ STA.} = 10+84.29$ $P.T. \text{ STA.} = 11+03.65$	PROP. CURVE TRAIL3 PI STA. = 11+63.40 $\Delta = 49^\circ 48' 34''$ (LT) $D = 572^\circ 57' 28''$ $R = 10.00'$ $T = 4.64'$ $L = 8.69'$ $E = 1.03'$ $e = \text{N.C.}$ $T.R. = \text{N/A}$ $S.E. \text{ RUN} = \text{N/A}$ $P.C. \text{ STA.} = 11+58.76$ $P.T. \text{ STA.} = 11+67.45$	PROP. CURVE TRAIL4 PI STA. = 11+97.37 $\Delta = 11^\circ 48' 44''$ (LT) $D = 114^\circ 35' 30''$ $R = 50.00'$ $T = 5.17'$ $L = 10.31'$ $E = 0.27'$ $e = \text{N.C.}$ $T.R. = \text{N/A}$ $S.E. \text{ RUN} = \text{N/A}$ $P.C. \text{ STA.} = 11+92.20$ $P.T. \text{ STA.} = 12+02.50$	PROP. CURVE TRAIL5 PI STA. = 12+21.76 $\Delta = 11^\circ 48' 44''$ (RT) $D = 114^\circ 35' 30''$ $R = 50.00'$ $T = 5.17'$ $L = 10.31'$ $E = 0.27'$ $e = \text{N.C.}$ $T.R. = \text{N/A}$ $S.E. \text{ RUN} = \text{N/A}$ $P.C. \text{ STA.} = 12+16.58$ $P.T. \text{ STA.} = 12+26.89$	PROP. CURVE TRAIL6 PI STA. = 12+93.96 $\Delta = 37^\circ 09' 09''$ (LT) $D = 190^\circ 59' 09''$ $R = 30.00'$ $T = 10.08'$ $L = 19.45'$ $E = 1.65'$ $e = \text{N.C.}$ $T.R. = \text{N/A}$ $S.E. \text{ RUN} = \text{N/A}$ $P.C. \text{ STA.} = 12+83.88$ $P.T. \text{ STA.} = 13+03.33$	PROP. CURVE TRAIL7 PI STA. = 13+27.89 $\Delta = 33^\circ 32' 50''$ (RT) $D = 190^\circ 59' 09''$ $R = 30.00'$ $T = 9.04'$ $L = 17.57'$ $E = 1.33'$ $e = \text{N.C.}$ $T.R. = \text{N/A}$ $S.E. \text{ RUN} = \text{N/A}$ $P.C. \text{ STA.} = 13+18.85$ $P.T. \text{ STA.} = 13+36.41$
---	--	--	---	---	--	---

MODEL: D:\default
 FILE: MONTGOMERY_Road_Kane_County\Phase B12_Design\CADD_Plan_Sheets\168317003-shc-tab_01.dgn
 © 2021 KIMLEY-HORN AND ASSOCIATES, INC.
 400 WHELFIELD ROAD, SUITE 600
 WARRENVILLE, IL 60555
 PHONE: 630-471-6600
 WWW.KIMLEY-HORN.COM



USER NAME = Kellen.Hinchey	DESIGNED - KKH	REVISED -
PLOT SCALE = 40.0000' / in.	DRAWN - KKH	REVISED -
PLOT DATE = 7/13/2022	CHECKED - SS	REVISED -
	DATE - 7/13/2022	REVISED -

**KANE COUNTY
DIVISION OF TRANSPORTATION**

**ALIGNMENT
MONTGOMERY ROAD AT VIRGIL GILMAN TRAIL**

SCALE: 1" = 20' SHEET 1 OF 1 SHEETS STA. 1000+00.00 TO STA. 1006+00.00

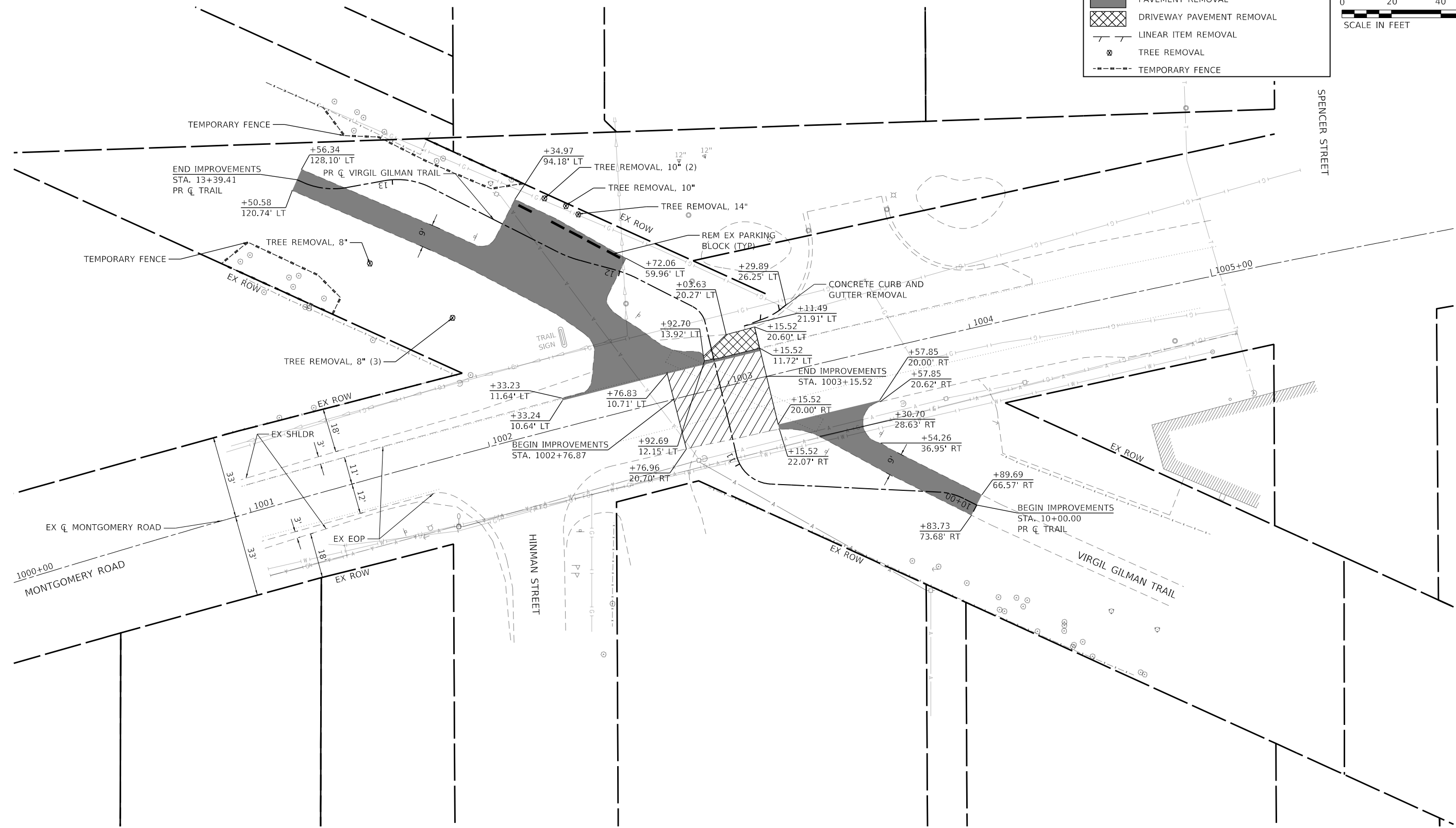
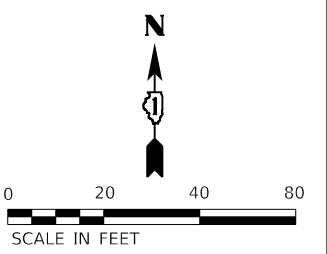
F.A.U. RTE.	SECTION	COUNTY	TOTAL SHEETS	SHEET NO.
3579	20-00524-01-5P	KANE	22	8
CONTRACT NO. 61H97				
ILLINOIS FED. AID PROJECT				

NOTES:

1. ALL STATIONS AND OFFSETS ARE MEASURED FROM THE EXISTING MONTGOMERY ROAD CENTERLINE UNLESS OTHERWISE NOTED.
2. CONTRACTOR SHALL VERIFY LOCATION OF FIRE STATION FLASHING BEACON SYSTEM BEFORE ANY REMOVAL WORK BEGINS.

REMOVAL PLAN LEGEND

- EXISTING RIGHT-OF-WAY
- [Hatched Box] HMA SURFACE REMOVAL, 2.75"
- [Solid Grey Box] PAVEMENT REMOVAL
- [Cross-hatched Box] DRIVEWAY PAVEMENT REMOVAL
- LINEAR ITEM REMOVAL
- ⊗ TREE REMOVAL
- - - - - TEMPORARY FENCE



MODEL: D:\default\Kimley-Horn\CAD\CUS\TPO\168317003\Montgomery_Road_Kane_County\Phase B\2_Design\CADD_Plan_Sheets\168317003-shr-removal_01.dgn
 FILE NAME: C:\CUS\TPO\168317003\Montgomery_Road_Kane_County\Phase B\2_Design\CADD_Plan_Sheets\168317003-shr-removal_01.dgn



USER NAME = Kellen.Hinchey	DESIGNED - KKH	REVISED -
PLOT SCALE = 40.0000' / in.	CHECKED - SS	REVISED -
PLOT DATE = 7/13/2022	DATE - 7/13/2022	REVISED -

**KANE COUNTY
DIVISION OF TRANSPORTATION**

**REMOVAL PLAN
MONTGOMERY ROAD AT VIRGIL GILMAN TRAIL**

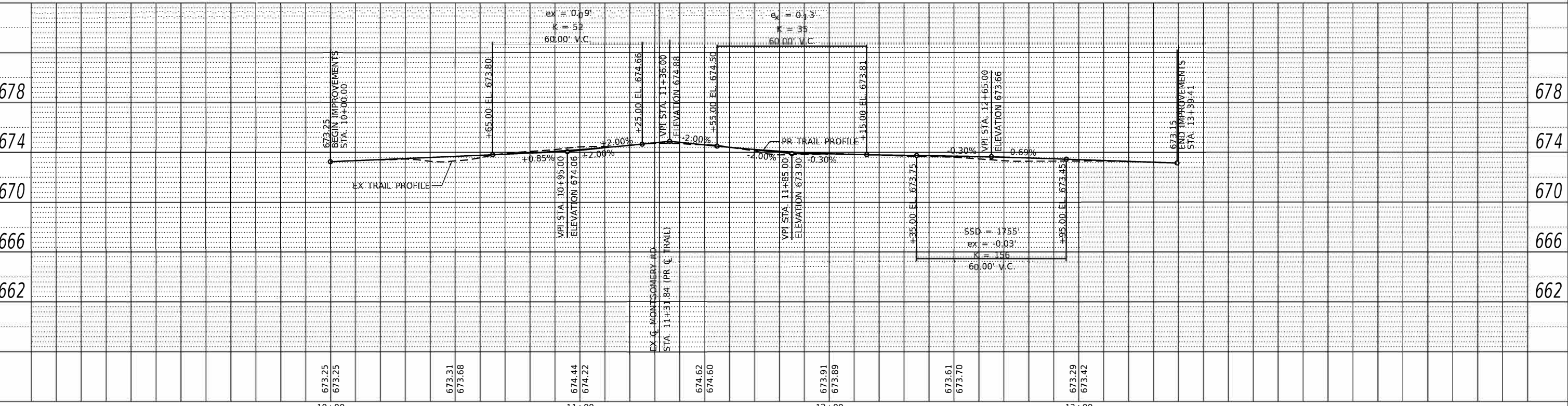
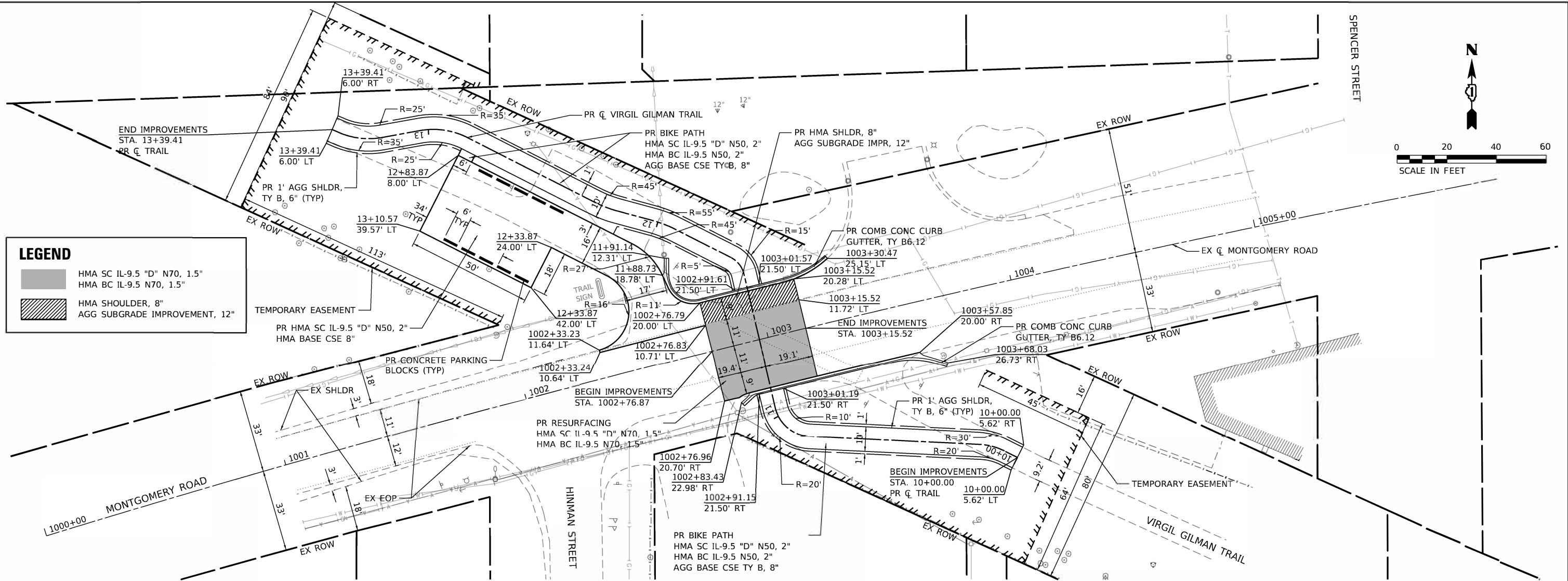
SCALE: 1" = 20' SHEET 1 OF 1 SHEETS STA. 1000+00.00 TO STA. 1006+00.00

F.A.U. RTE.	SECTION	COUNTY	TOTAL SHEETS	SHEET NO.
3579	20-00524-01-5P	KANE	22	9
CONTRACT NO. 61H97				
ILLINOIS FED. AID PROJECT				

DATE	
BY	
PLAN	
SURVEYED	
PLOTTED	
GRADES CHECKED	
STRUCTURE NOTATION	
NO.	

DATE	
BY	
PROFILE	
SURVEYED	
PLOTTED	
GRADES CHECKED	
STRUCTURE NOTATION	
NO.	

MODEL: D:\p1001\168317003 Montgomery Road Kane County\Phase 02 Design\CAD\plan Sheets\168317003.dwg
 FILE NAME: K:\GIS\PROJECTS\168317003 Montgomery Road Kane County\Phase 02 Design\CAD\plan Sheets\168317003.dwg



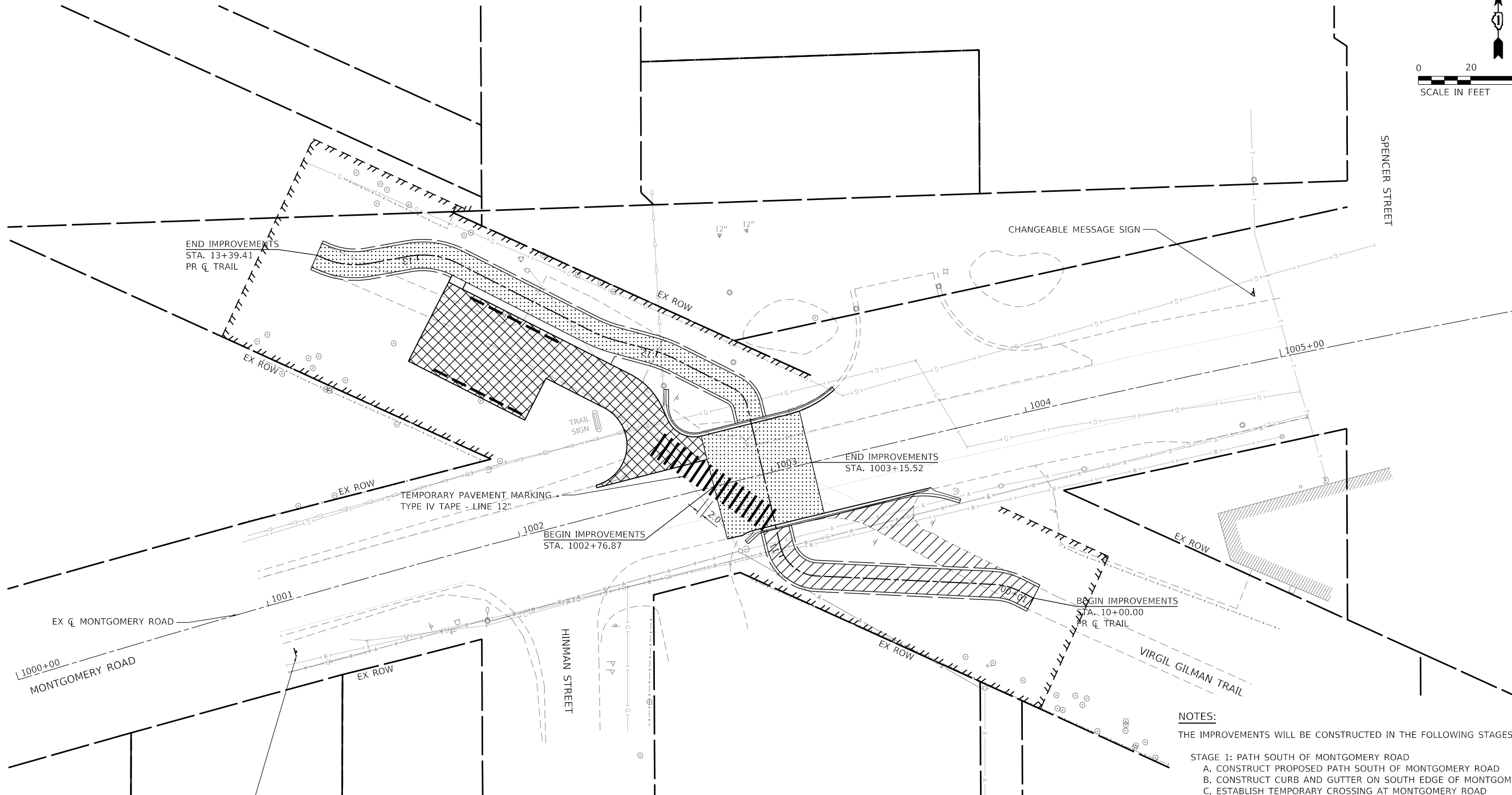
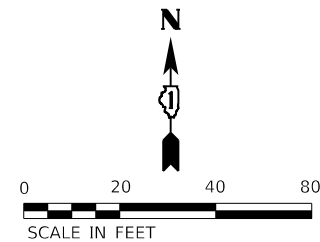
Kimley-Horn
 © 2012 KIMLEY-HORN AND ASSOCIATES, INC.
 4201 WIFE DR., SUITE 200
 WAREHOUSING, IL 60555
 PHONE: 815-461-1800
 WWW.KIMLEY-HORN.COM

USER NAME = Kellen.Hinney	DESIGNED - KKH	REVISED -
	DRAWN - KKH	REVISED -
PLOT SCALE = 40.0000' / in.	CHECKED - SS	REVISED -
PLOT DATE = 7/13/2022	DATE = 7/13/2022	REVISED -

**KANE COUNTY
 DIVISION OF TRANSPORTATION**

PLAN AND PROFILE	
MONTGOMERY ROAD AT VIRGIL GILMAN TRAIL	
SCALE: 1" = 20'	SHEET 1 OF 1 SHEETS
STA. 1000+00.00	TO STA. 1006+00.00

F.A.U. RTE. 3579	SECTION 20-00524-01-5P	COUNTY KANE	TOTAL SHEETS 22	SHEET NO. 10
ILLINOIS FED. AID PROJECT			CONTRACT NO. 61H97	



- NOTES:**
 THE IMPROVEMENTS WILL BE CONSTRUCTED IN THE FOLLOWING STAGES:
- STAGE 1: PATH SOUTH OF MONTGOMERY ROAD**
 A. CONSTRUCT PROPOSED PATH SOUTH OF MONTGOMERY ROAD
 B. CONSTRUCT CURB AND GUTTER ON SOUTH EDGE OF MONTGOMERY ROAD
 C. ESTABLISH TEMPORARY CROSSING AT MONTGOMERY ROAD
 D. REMOVE EXISTING CROSSING AT MONTGOMERY ROAD AND EXISTING PATH SOUTH OF MONTGOMERY ROAD
- STAGE 2: MONTGOMERY ROAD AND PATH NORTH OF MONTGOMERY ROAD**
 A. REMOVE EXISTING PARKING LOT
 B. SURFACE AND SHOULDER REMOVAL ON MONTGOMERY ROAD
 C. CONSTRUCT PROPOSED PATH NORTH OF MONTGOMERY ROAD
 D. CONSTRUCT CURB AND GUTTER ON NORTH EDGE OF MONTGOMERY ROAD
 E. CONSTRUCT SHOULDER AND RESURFACE MONTGOMERY ROAD
 F. REMOVE TEMPORARY CROSSING AT MONTGOMERY ROAD
 G. COMPLETE PAVEMENT MARKING AND SIGNING AT MONTGOMERY ROAD TO ESTABLISH NEW CROSSING.
- STAGE 3: PARKING LOT**
 A. CONSTRUCT NEW PARKING LOT AND DRIVEWAY

LEGEND	
	STAGE I
	STAGE II
	STAGE III

MODEL: Default
 FILE: \\MAILSVC\CCUS\TPO\168317003_Montgomery_Road_Kane_County\Phase_B\2_Design\CADD_Plan_Sheets\168317003-shc-MOT_01.dgn
 © 2021 KIMLEY-HORN AND ASSOCIATES, INC.
 400 WINDFIELD ROAD, SUITE 600
 WARRENVILLE, IL 60090
 PHONE: 630-487-6600
 WWW.KIMLEY-HORN.COM



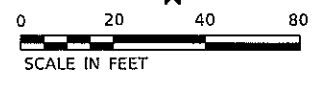
USER NAME = Kellen.Hincney	DESIGNED - KKH	REVISED -
	DRAWN - KKH	REVISED -
PLOT SCALE = 40.0000' / in.	CHECKED - SS	REVISED -
PLOT DATE = 7/13/2022	DATE - 7/13/2022	REVISED -

**KANE COUNTY
 DIVISION OF TRANSPORTATION**

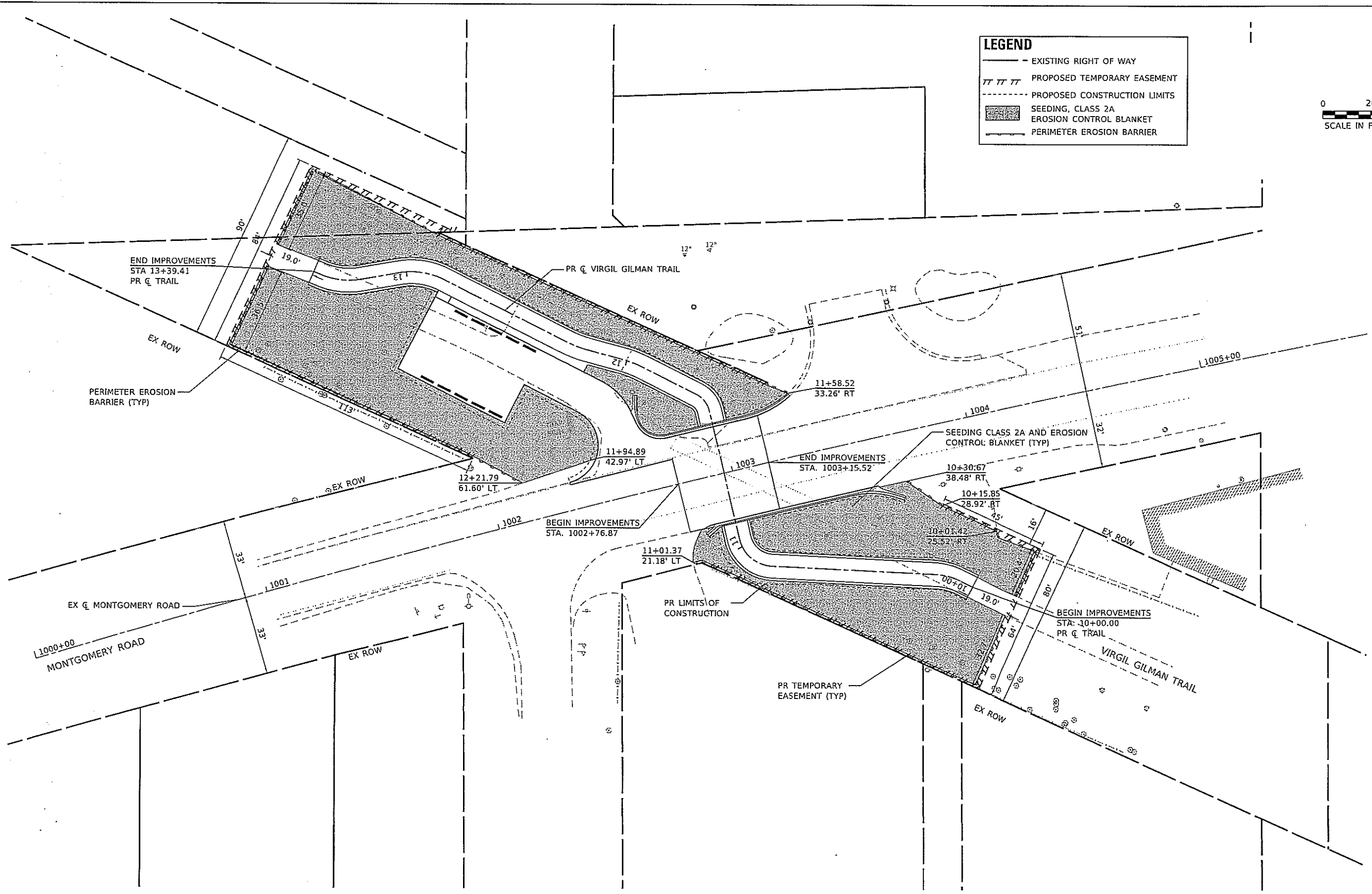
**MAINTENANCE OF TRAFFIC PLAN
 MONTGOMERY ROAD AT VIRGIL GILMAN TRAIL**

SCALE: 1" = 20' SHEET 1 OF 1 SHEETS STA. 1000+00.00 TO STA. 1006+00.00

F.A.U. RTE.	SECTION	COUNTY	TOTAL SHEETS	SHEET NO.
3579	20-00524-01-5P	KANE	22	11
CONTRACT NO. 61H97				
ILLINOIS FED. AID PROJECT				



LEGEND	
	EXISTING RIGHT OF WAY
	PROPOSED TEMPORARY EASEMENT
	PROPOSED CONSTRUCTION LIMITS
	SEEDING, CLASS 2A EROSION CONTROL BLANKET
	PERIMETER EROSION BARRIER



MODEL: Default
 FILE NAME: K:\GIS\KIMS\17003 Montgomery Road Kane County\Phase 1\2 Desktop\CAD\Plan_Sheets\168317003-sheets_01.dgn



USER NAME = Kellen.Hinney	DESIGNED - KKH	REVISED -
PLOT SCALE = 40.0000' / 1 in.	DRAWN - KKH	REVISED -
PLOT DATE = 7/13/2022	CHECKED - SS	REVISED -
	DATE - 7/13/2022	REVISED -

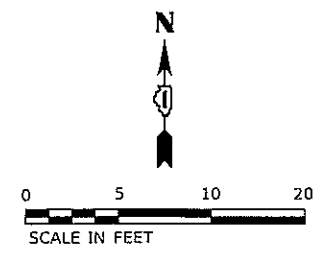
**KANE COUNTY
 DIVISION OF TRANSPORTATION**

**DRAINAGE AND EROSION CONTROL PLAN
 MONTGOMERY ROAD AT VIRGIL GILMAN TRAIL**

SCALE: 1" = 20' SHEET 1 OF 1 SHEETS STA. 1000+00.00 TO STA. 1006+00.00

F.A.U. RTE.	SECTION	COUNTY	TOTAL SHEETS	SHEET NO.
3579	20-00524-01-5P	KANE	22	12
CONTRACT NO. 61H97				
ILLINOIS FED. AID PROJECT				

NOTES:
 1. ALL STATIONS AND OFFSETS ARE MEASURED FROM THE PROPOSED VIRGIL GILMAN TRAIL CENTERLINE UNLESS OTHERWISE NOTED.



MONTGOMERY RD AND VIRGIL GILMAN TRAIL
NORTH INTERSECTION RAMP
CONTROL POINTS

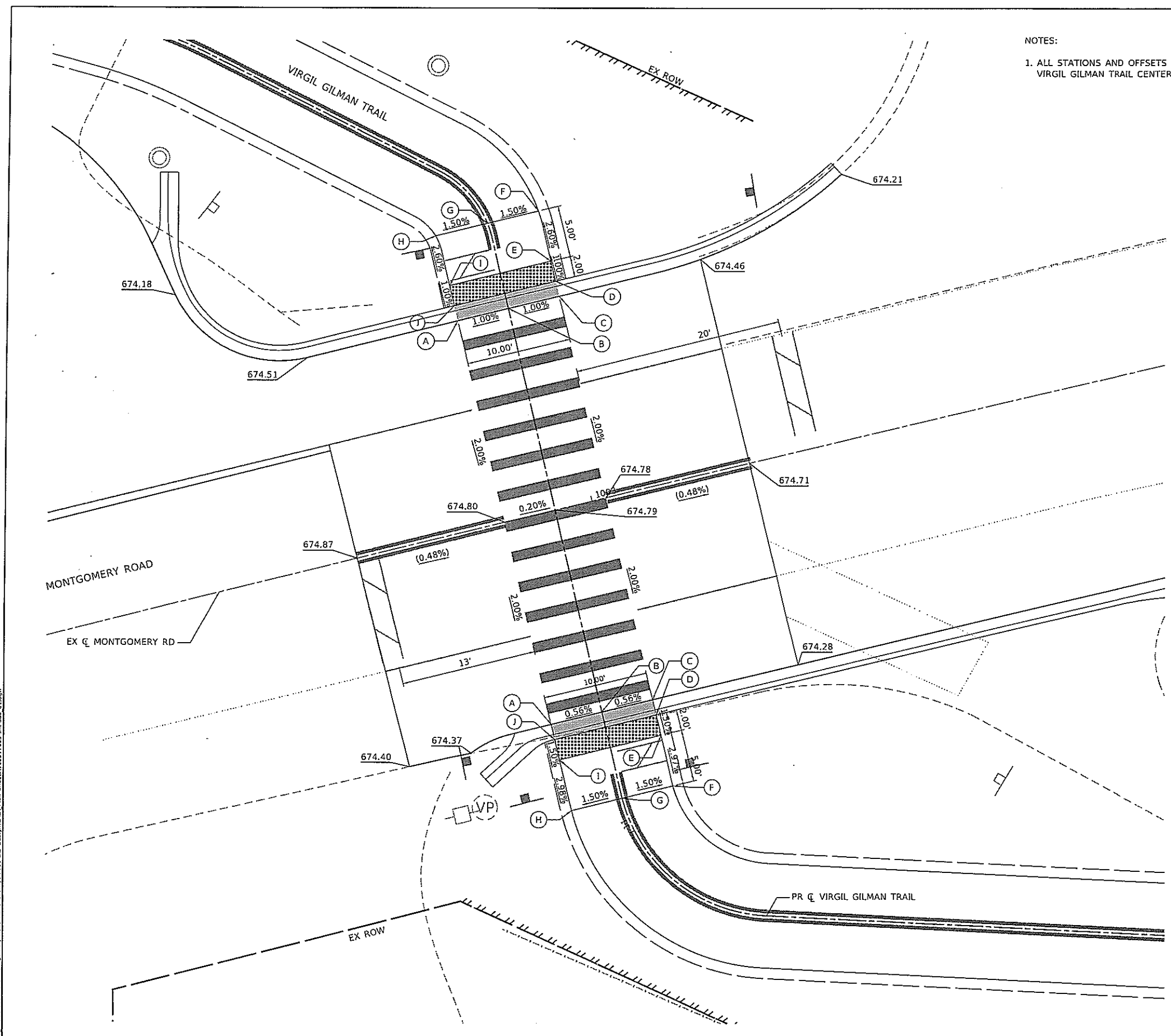
POINT	STATION	OFFSET	ELEVATION
A	11+51.79	5.00' LT	674.51
B	11+51.84	0.00'	674.56
C	11+51.88	5.00' RT	674.51
D	11+53.38	5.00' RT	674.50
E	11+55.38	5.00' RT	674.48
F	11+60.36	5.00' RT	674.35
G	11+60.34	0.00'	674.42
H	11+60.29	5.00' LT	674.35
I	11+55.29	5.00' LT	674.48
J	11+53.29	5.00' LT	674.50

LEGEND

- DETECTABLE WARNING
- DEPRESSED CURB & GUTTER
- PROPOSED ELEVATION
- EXISTING ELEVATION
- SIDEWALK/PAVEMENT GRADE
- EXISTING GRADE
- CC&G, TYPE B-6.12

MONTGOMERY RD AND VIRGIL GILMAN TRAIL
SOUTH INTERSECTION RAMP
CONTROL POINTS

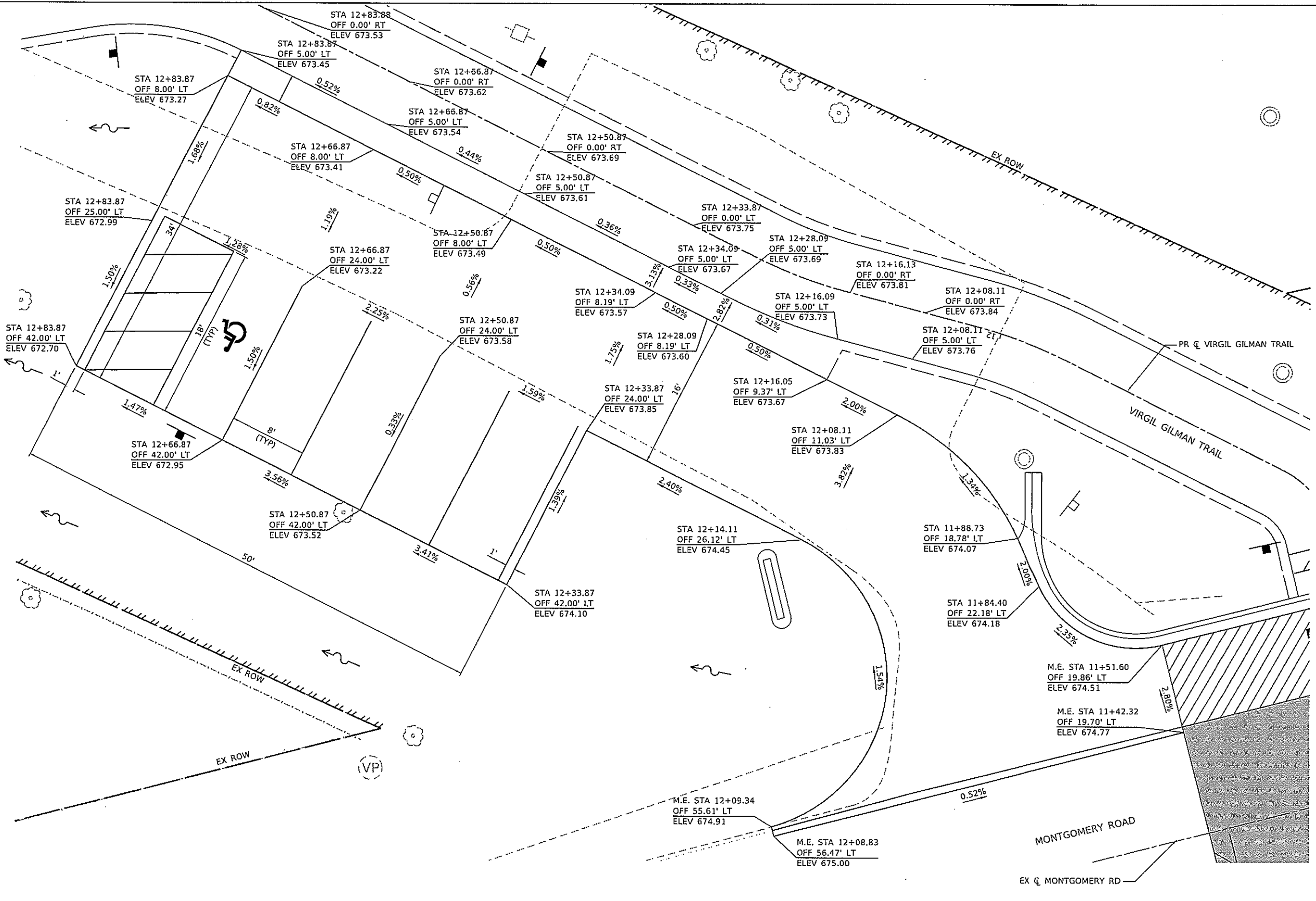
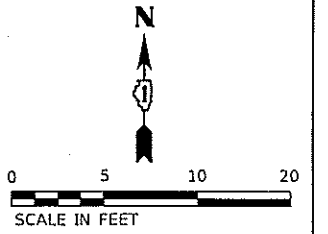
POINT	STATION	OFFSET	ELEVATION
A	11+11.78	5.00' LT	674.38
B	11+11.83	0.00'	674.41
C	11+11.88	5.00' RT	674.38
D	11+10.38	5.00' RT	674.37
E	11+08.38	5.00' RT	674.34
F	11+03.43	5.00' RT	674.20
G	11+03.46	0.00'	674.27
H	11+03.48	5.00' LT	674.20
I	11+08.28	5.00' LT	674.34
J	11+10.28	5.00' LT	674.37



MODEL: DEFAULT
 FILE NAME: K:\CISUS\TPTD\168317003 Montgomery Road Kane County\Phase II\2 Design\CAD Plan Sheet\168317003-nh-sda 01.dgn

	USER NAME = Kellen.Hinchey	DESIGNED - KKH	REVISED -	KANE COUNTY DIVISION OF TRANSPORTATION	INTERSECTION RAMP DETAIL MONTGOMERY ROAD AT VIRGIL GILMAN TRAIL	F.A.U. RT#.	SECTION	COUNTY	TOTAL SHEETS	SHEET NO.	
	PLOT SCALE = 10,0000' / 1 in.	DRAWN - KKH	REVISED -			3579	20-00524-01-5P	KANE	22	13	
	PLOT DATE = 7/13/2022	CHECKED - SS	REVISED -			CONTRACT NO. 61H97					
	DATE = 7/13/2022	DATE - 7/13/2022	REVISED -			ILLINOIS FED. AID PROJECT					

SCALE: 1" = 5' SHEET 1 OF 1 SHEETS STA. TO STA.



MODEL: Default
 FILE: I:\GIS\2020\180317003 Montgomery Road Kane County\Phase 1\2 Design\CAD\Plan_Sheets\180317003-ph-grading_01.dwg
 DATE: 7/13/2022



USER NAME = Kellen.Hinchey	DESIGNED - KKH	REVISED -
PLOT SCALE = 10.0000" / 1'	DRAWN - KKH	REVISED -
PLOT DATE = 7/13/2022	CHECKED - SS	REVISED -
	DATE - 7/13/2022	REVISED -

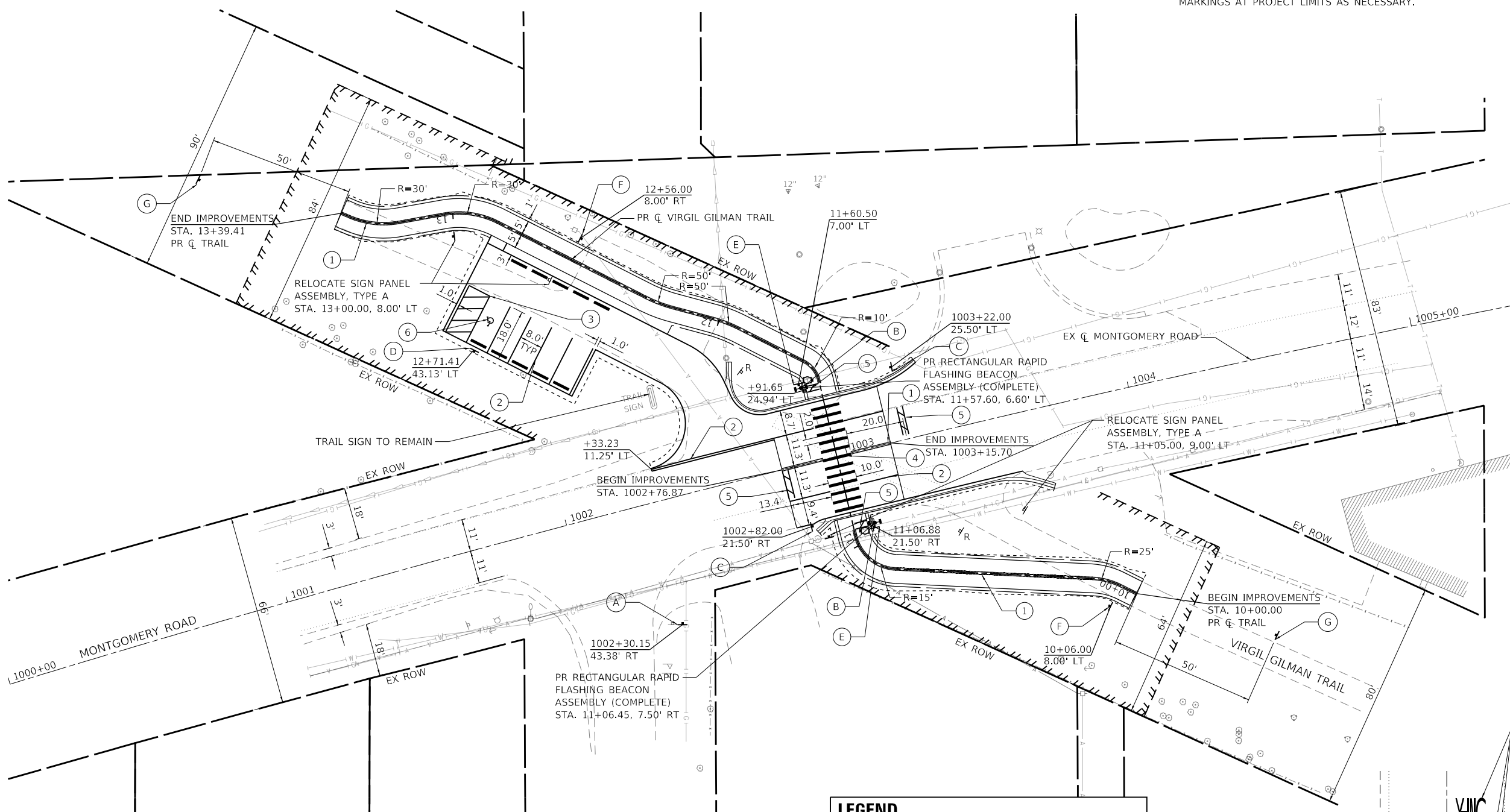
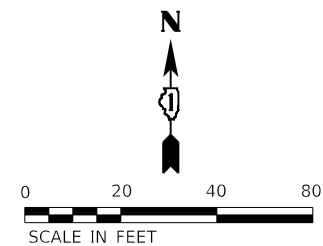
KANE COUNTY
DIVISION OF TRANSPORTATION

PARKING LOT GRADING PLAN MONTGOMERY ROAD AT VIRGIL GILMAN TRAIL	
SCALE: 1" = 5'	SHEET 1 OF 1 SHEETS
STA.	TO STA.

F.A.U. RTE.	SECTION	COUNTY	TOTAL SHEETS	SHEET NO.
3579	20-00524-01-5P	KANE	22	14
CONTRACT NO. 61H97				
ILLINOIS FED. AID PROJECT				

NOTES:

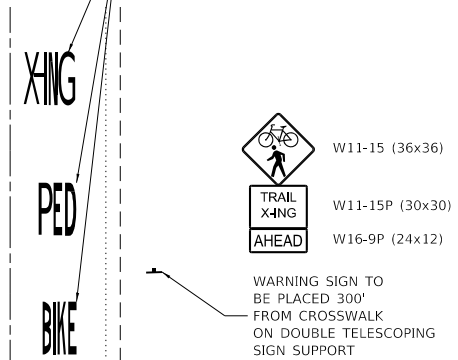
1. ALL STATIONS AND OFFSETS ARE MEASURED FROM THE EXISTING MONTGOMERY ROAD CENTERLINE UNLESS OTHERWISE NOTED.
2. THE CONTRACTOR SHALL MATCH THE EXISTING PAVEMENT MARKINGS AT PROJECT LIMITS AS NECESSARY.



LEGEND	
①	MODIFIED URETHANE PAVEMENT MARKING - LINE 4" (SOLID YELLOW, DOUBLE CENTERLINE, 11" C-C)
②	MODIFIED URETHANE PAVEMENT MARKING - LINE 4" (SOLID WHITE)
③	MODIFIED URETHANE PAVEMENT MARKING - LINE 8" (SOLID YELLOW)
④	MODIFIED URETHANE PAVEMENT MARKING - LINE 12" (SOLID WHITE, CROSSWALK)
⑤	MODIFIED URETHANE PAVEMENT MARKING - LINE 24" (SOLID WHITE, STOP BAR)

MODIFIED R10-15R (30x30)	W11-15 (36x36) W16-7P (24x12)	R1-5b (36x36)	R7-8 (12x18) R7-1101P (18x9)
R1-1 (18x18)	W3-1 (18x18)	W1-4 (18x18)	

THERMOPLASTIC PAVEMENT MARKING - LETTERS AND SYMBOLS (TO BE PLACED OVER EXISTING MARKINGS)



ADVANCE WARNING DETAIL

MODEL: Default; FILE: M:\CADD\KANSAS\KANE COUNTY\Phase B\2_Design\CADD_Plan_Sheets\168317003-sheet_01.dgn



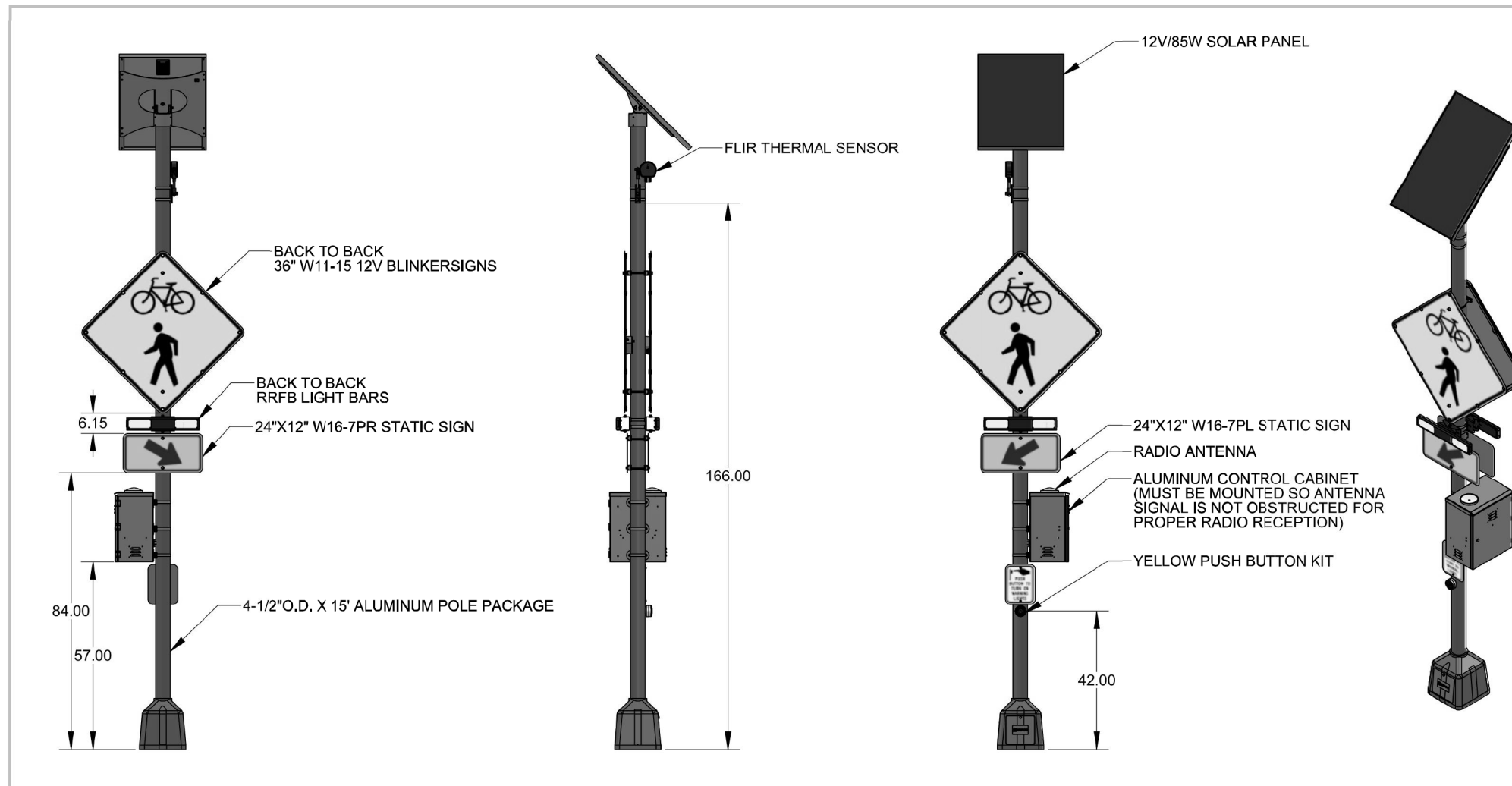
USER NAME = Kellen.Hinney	DESIGNED - KKH	REVISED -
PLOT SCALE = 40.0000' / in.	DRAWN - KKH	REVISED -
PLOT DATE = 7/13/2022	CHECKED - SS	REVISED -
	DATE - 7/13/2022	REVISED -

**KANE COUNTY
DIVISION OF TRANSPORTATION**

**SIGNAL, PAVEMENT MARKING AND SIGNING PLAN
MONTGOMERY ROAD AT VIRGIL GILMAN TRAIL**

SCALE: 1" = 20' SHEET 1 OF 1 SHEETS STA. 1000+00.00 TO STA. 1006+00.00

F.A.U. RTE.	SECTION	COUNTY	TOTAL SHEETS	SHEET NO.
3579	20-00524-01-5P	KANE	22	15
CONTRACT NO. 61H97				
ILLINOIS FED. AID PROJECT				



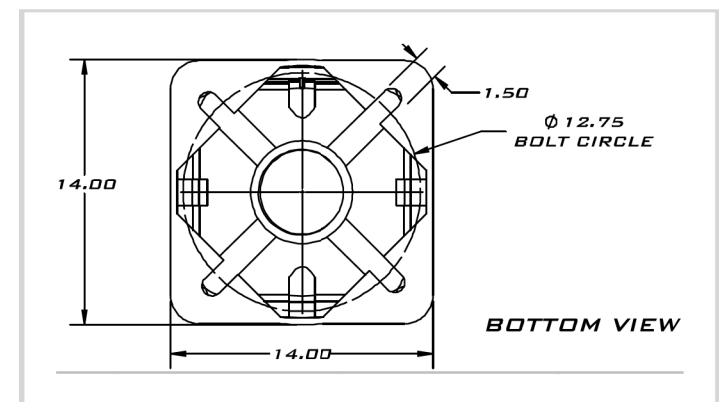
- NOTES:**
1. ORIENT SOLAR PANEL TOWARDS SOUTHERN SKY FOR MAXIMUM SOLAR EXPOSURE
 2. CONTROL CABINET HEIGHT MAY VARY.
 3. WORM CLAMPS ARE PROVIDED, STANDARD 3/4" S/S BANDING IS RECOMMENDED
 4. J-BOLTS NOT SHOWN
 5. ALL DIMENSIONS ARE FOR REFERENCE ONLY.

DIMENSIONS ARE INCH AND TOLERANCES ARE AS FOLLOWS UNLESS OTHERWISE SPECIFIED

.X	±0.1
.XX	±0.02
.XXX	±0.008
ANGLES	±1°

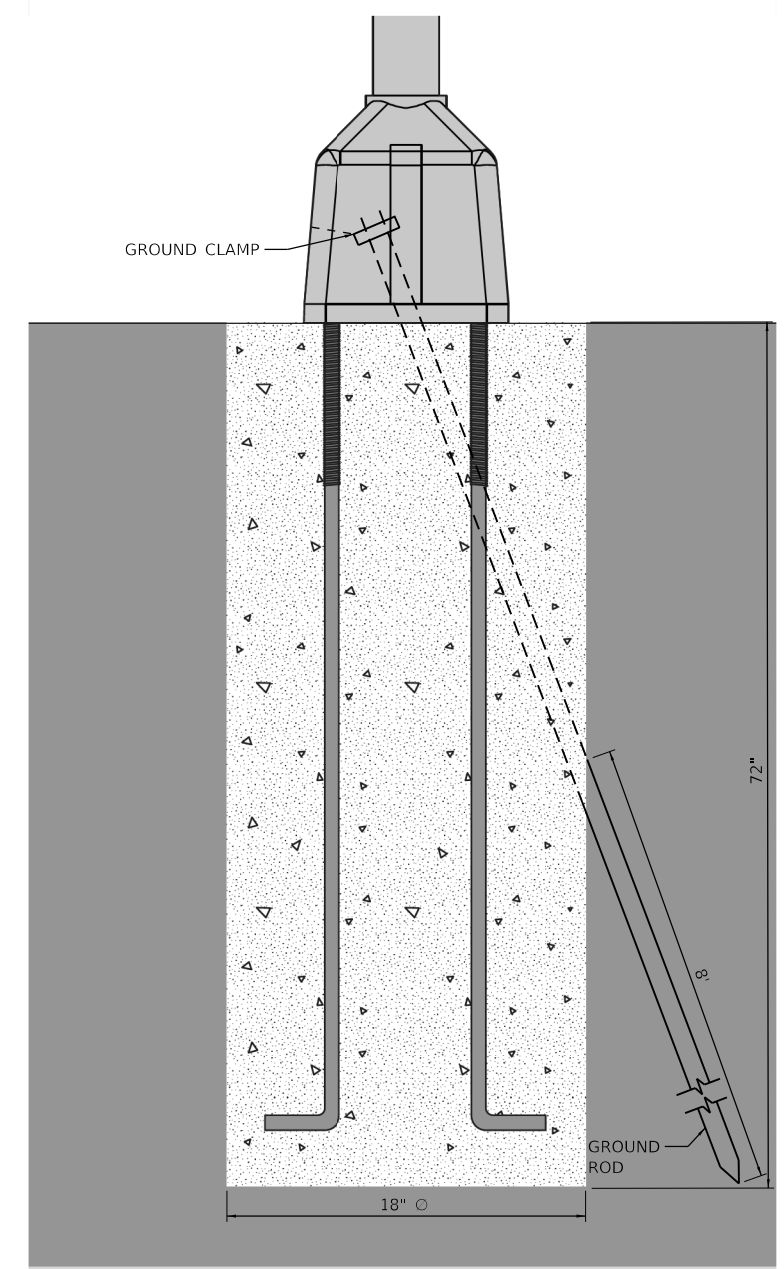
DESIGNED BY	AK	DATE	04/06/2022
DRAWN BY	AK	DATE	04/06/2022
APPROVED BY	JP	DATE	04/08/2022

REV.	DESCRIPTION	ECO	BY	DATE
A	INITIAL RELEASE	-	JP	04/08/2022



BASE DETAIL

(4X) 3177-00042 1" x 42" J-bolt, nut and washer



J-BOLT DETAIL

RECTANGULAR RAPID FLASHING BEACON DETAIL

MODEL: Default FILE NAME: C:\C:\C\US_T\PTD\168317003_Montgomery_Road_Kane_County\Phase B\2_Design\CADD_Plan_Sheets\168317003-shc1s-std_01.dgn



USER NAME = Kellen.Hinchey	DESIGNED -	REVISED -
PLOT SCALE = 2,0000' / in.	DRAWN -	REVISED -
PLOT DATE = 7/13/2022	CHECKED -	REVISED -
	DATE - 7/13/2022	REVISED -

**KANE COUNTY
DIVISION OF TRANSPORTATION**

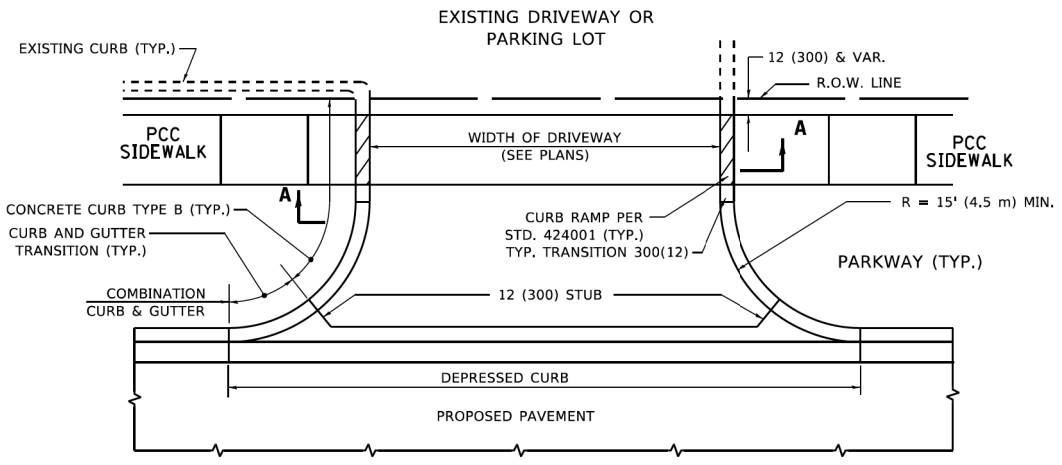
**RECTANGULAR RAPID FLASHING BEACON DETAILS
MONTGOMERY ROAD AT VIRGIL GILMAN TRAIL**

SCALE: NTS SHEET 1 OF 1 SHEETS STA. TO STA.

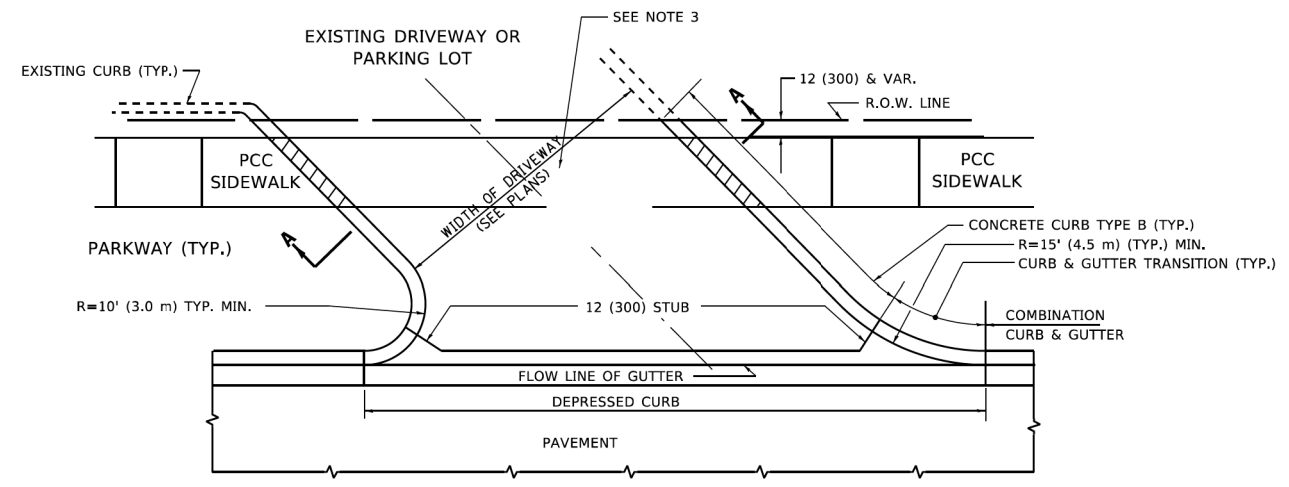
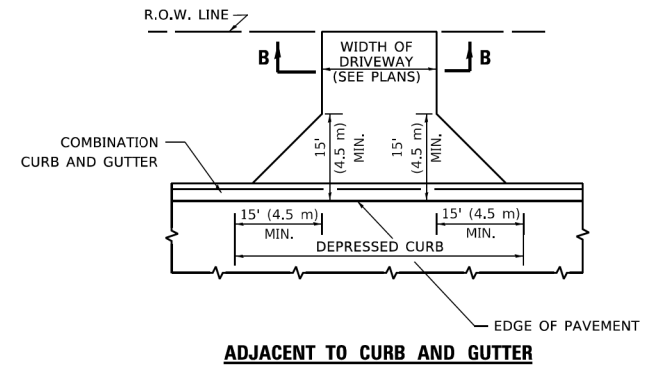
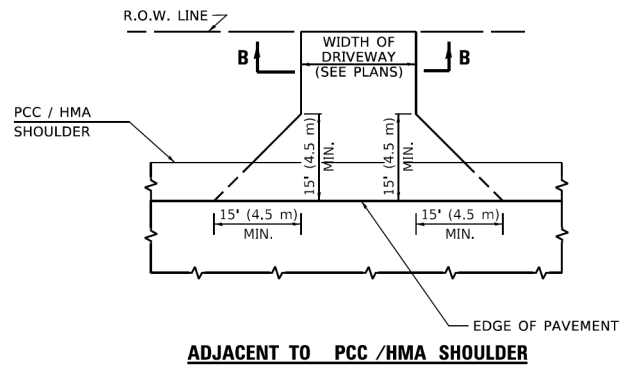
F.A.U. RTE.	SECTION	COUNTY	TOTAL SHEETS	SHEET NO.
3579	20-00524-01-5P	KANE	22	16

CONTRACT NO. 61H97

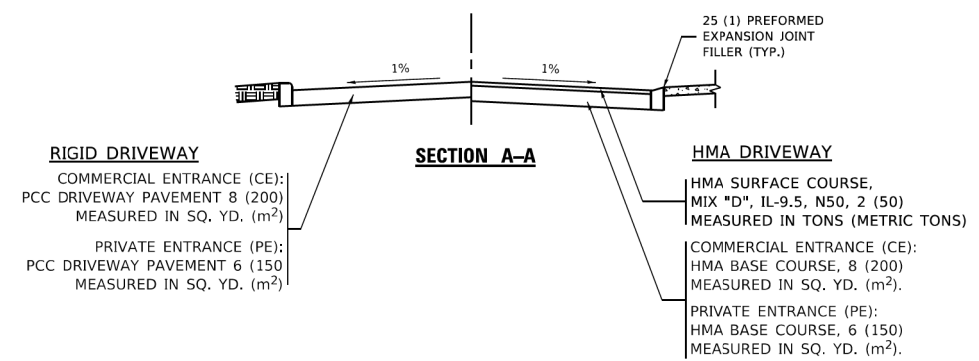
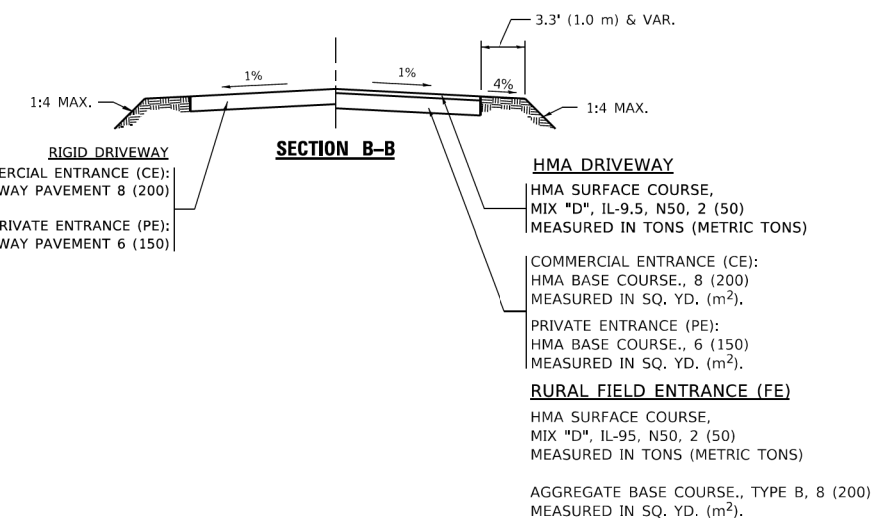
ILLINOIS FED. AID PROJECT



WITH CONCRETE CURB, TYPE B



WITH CONCRETE CURB, TYPE B



GENERAL NOTES

- DRIVEWAY SLOPES, LOCATIONS, & GEOMETRIC LAYOUT SHALL BE IN ACCORDANCE WITH THE LATEST EDITION OF THE "HANDBOOK FOR POLICY ON PERMITS FOR ACCESS DRIVEWAYS TO STATE HIGHWAYS". FOR FURTHER LAYOUT REQUIREMENTS, REFER TO ILLUSTRATIONS IN THE PERMIT HANDBOOK. DRIVEWAYS SHALL BE REPLACED IN KIND, UNLESS OTHERWISE NOTED ON THE PLANS.
- COMMERCIAL DRIVEWAYS SHALL BE CONSTRUCTED WITH CONCRETE CURB, TYPE B RETURNS EXCEPT WHEN THE SIDEWALK EDGE IS 4 FEET (1.2 METERS) OR LESS FROM THE BACK OF CURB, CONSTRUCT A FLARE DRIVEWAY WITHOUT CURB.

ALL DIMENSIONS ARE IN INCHES (MILLIMETERS) UNLESS OTHERWISE NOTED.

MODEL: Default FILE NAME: W:\dtd\168317003-1\168317003-shd-cd-det_01.dgn	USER NAME = demanchelt	DESIGNED - R. SHAH	REVISED - R. BORO 06-11-08	STATE OF ILLINOIS DEPARTMENT OF TRANSPORTATION	DRIVEWAY DETAILS - DISTANCE BETWEEN R.O.W. AND FACE OF CURB & EDGE OF SHOULDER ≥ 15'(4.5m)	F.A. RTE.	SECTION	COUNTY	TOTAL SHEETS	SHEET NO.	
	PLOT SCALE = 100.0000" / in.	CHECKED -	REVISED - R. BORO 09-06-11			SCALE: NONE	SHEET 1 OF 1 SHEETS	STA.	TO STA.	BD400-01 (BD-01)	CONTRACT NO.
	PLOT DATE = 2/2/2022	DATE - 11-04-95	REVISED - K. SMITH 08-28-19							ILLINOIS	FED. AID PROJECT
			REVISED - K. SMITH 02-01-22								

MODEL: Default
FILE NAME: W:\dtd\168317003-1\168317003-shd-cd-det_01.dgn

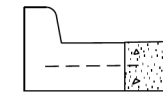
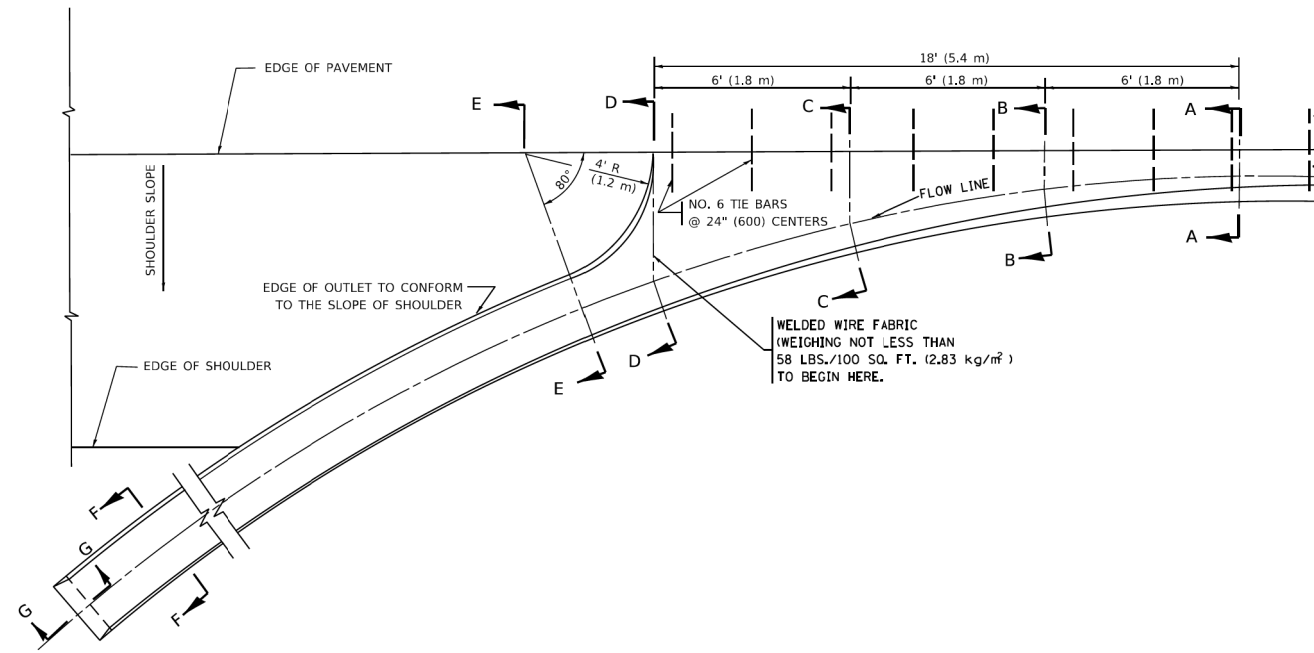


USER NAME = Kellen.Hinchey	DESIGNED -	REVISED -
PLOT SCALE = 2.0000" / in.	CHECKED -	REVISED -
PLOT DATE = 7/13/2022	DATE - 7/13/2022	REVISED -

**KANE COUNTY
DIVISION OF TRANSPORTATION**

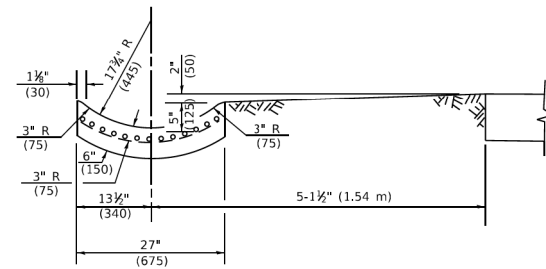
**DISTRICT 1 DETAILS
MONTGOMERY ROAD AT VIRGIL GILMAN TRAIL**

F.A.U. RTE.	SECTION	COUNTY	TOTAL SHEETS	SHEET NO.
3579	20-00524-01-5P	KANE	22	17
CONTRACT NO. 61H97				
ILLINOIS FED. AID PROJECT				

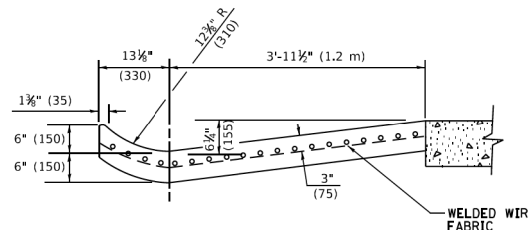


SECTION A-A *

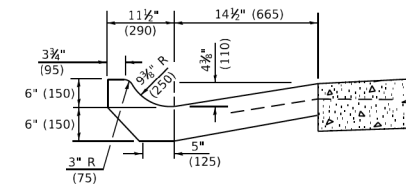
* DIMENSIONS OF THE CURB & GUTTER AT SECTION A-A ARE SHOWN ON STATE STANDARD 606001. FOR DETAILS OF OUTLET FOR CONCRETE CURB & GUTTER, TYPE B-6.24 (B-15.60) SEE STATE STANDARD 606006.



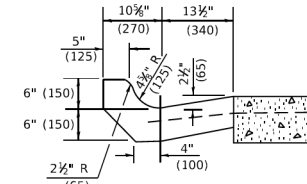
SECTION E-E



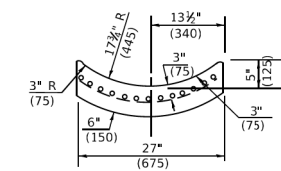
SECTION D-D



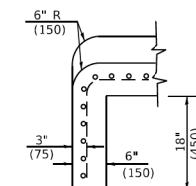
SECTION C-C



SECTION B-B



SECTION F-F



SECTION G-G

GENERAL NOTES

- GUTTER OUTLET SHALL BE TIED TO THE PAVEMENT IN ACCORDANCE WITH DETAILS FOR LONGITUDINAL CONSTRUCTION JOINT SHOWN ON STANDARD 420001.
- TIE BARS SHALL BE NO. 20 (NO.6) AT 24" (600) CENTERS UNLESS OTHERWISE SHOWN.
- IF THE AVERAGE GRADE OF PAVEMENT FOR THE DISTANCE FROM SECTION A-A TO D-D EXCEEDS 2%, THIS DISTANCE SHALL BE INCREASED 6' (1.8 m) FOR EACH 1% INCREASE IN GRADE.

METHOD OF MEASUREMENT

FOR SECTION A-A TO E-E AND CURTAIN WALL=
 1.25 CU. YDS. (0.96³m) CLASS SI CONCRETE (OUTLET) FOR 9" (225) PAV'T.
 1.27 CU. YDS. (0.96³m) CLASS SI CONCRETE (OUTLET) FOR 10" (250) PAV'T.
 FOR SECTION F-F=
 0.045 CU. YDS. (0.03³m) CLASS SI CONCRETE PER FT. (m).

ALL DIMENSIONS ARE IN INCHES (MILLIMETERS) UNLESS OTHERWISE SHOWN.

MODEL: D:\dwg\...
 FILE NAME: W:\files\2022\22-23\10403.dwg

USER NAME = demanchelt	DESIGNED - M. DE YONG	REVISED - R. SHAH 10-25-94
	DRAWN -	REVISED - E. GOMEZ 12-21-00
PLOT SCALE = 100.0000' / in.	CHECKED -	REVISED - K. SMITH 08-27-19
PLOT DATE = 2/2/2022	DATE - 08-04-86	REVISED - K. SMITH 02-01-22

**STATE OF ILLINOIS
DEPARTMENT OF TRANSPORTATION**

**OUTLET FOR CONCRETE
CURB AND GUTTER**

SCALE: NONE	SHEET 1	OF 1	SHEETS	STA.	TO STA.	F.A.U. RTE.	SECTION	COUNTY	TOTAL SHEETS	SHEET NO.
						BD600-01	(BD-03)			
						ILLINOIS FED. AID PROJECT			CONTRACT NO.	

MODEL: D:\dwg\...
 FILE NAME: W:\files\2022\22-23\10403.dwg

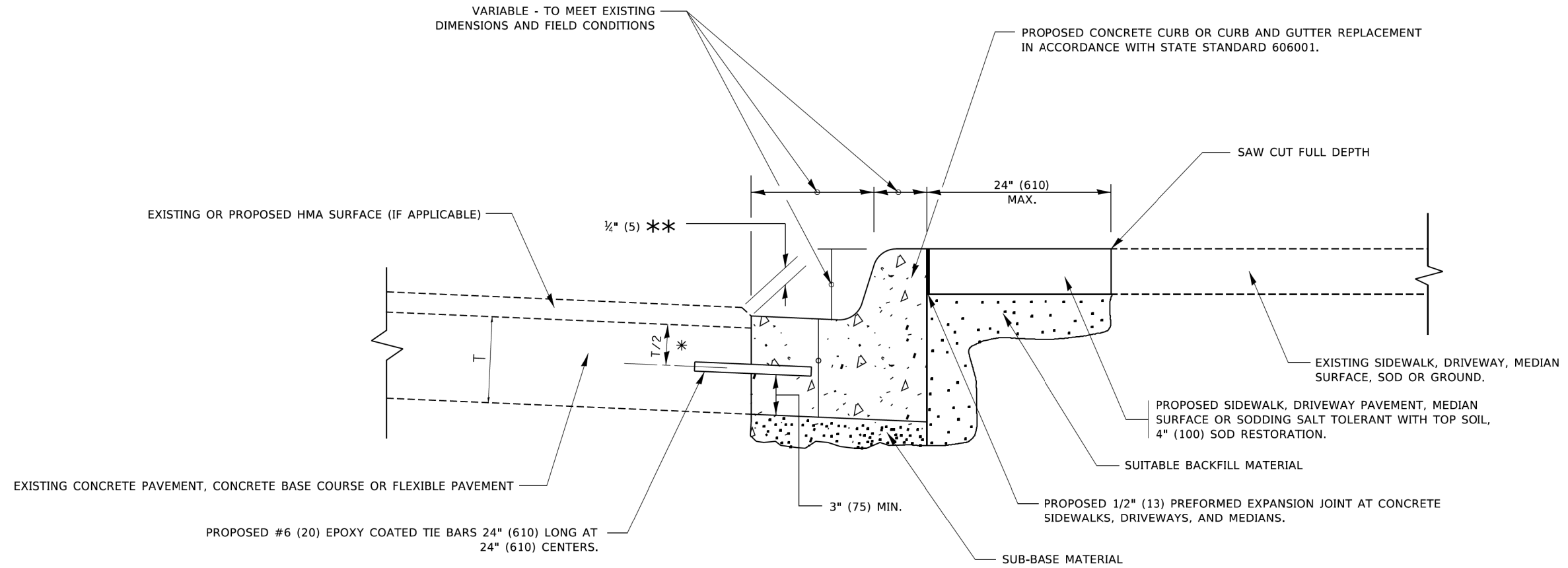
Kimley-Horn

USER NAME = Kellen.Hinchey	DESIGNED -	REVISED -
	DRAWN -	REVISED -
PLOT SCALE = 2,0000' / in.	CHECKED -	REVISED -
PLOT DATE = 7/13/2022	DATE - 7/13/2022	REVISED -

**KANE COUNTY
DIVISION OF TRANSPORTATION**

**DISTRICT 1 DETAILS
MONTGOMERY ROAD AT VIRGIL GILMAN TRAIL**

SCALE:	SHEET	OF	SHEETS	STA.	TO STA.	F.A.U. RTE.	SECTION	COUNTY	TOTAL SHEETS	SHEET NO.
						3579	20-00524-01-5P	KANE	22	18
						ILLINOIS FED. AID PROJECT			CONTRACT NO. 61H97	



- * 3" (75) MINIMUM FROM TOP AND BOTTOM OF THE CONCRETE PAVEMENT OR BASE COURSE.
- ** IF THE FINAL SURFACE OF THE PAVEMENT IS CONCRETE, THE GUTTER IS TO BE FLUSH WITH THE PAVEMENT.

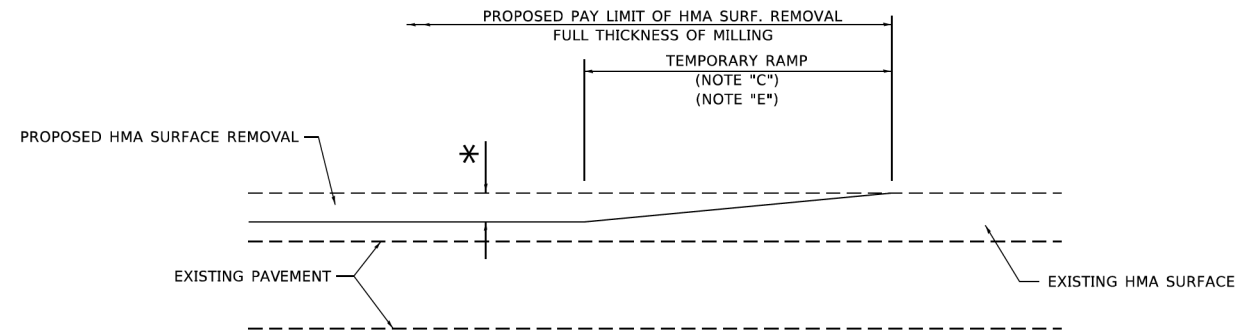
CURB OR CURB AND GUTTER REMOVAL AND REPLACEMENT

ALL DIMENSIONS ARE IN INCHES (MILLIMETERS) UNLESS OTHERWISE SHOWN.

USER NAME = footemj PLCT SCALE = 50.0000 ' / in. PLCT DATE = 7/11/2019	DESIGNED - A. HOUSEH DRAWN - CHECKED - DATE - 03-11-94	REVISED - A. ABBAS 03-21-97 REVISED - M. GOMEZ 01-22-01 REVISED - R. BORO 12-15-09 REVISED - K. SMITH 07-11-19	STATE OF ILLINOIS DEPARTMENT OF TRANSPORTATION	CURB OR CURB AND GUTTER REMOVAL AND REPLACEMENT	F.A.U. RTE. SECTION COUNTY	TOTAL SHEETS SHEET NO.
SCALE: NONE SHEET 1 OF 1 SHEETS STA. TO STA.				BD600-06 (BD-24) CONTRACT NO.		
				ILLINOIS FED. AID PROJECT		

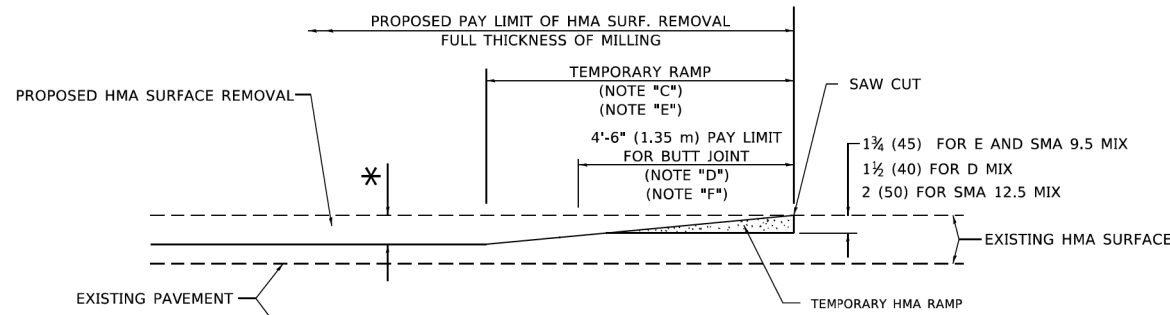
Kimley-Horn <small>© 2021 KIMLEY-HORN AND ASSOCIATES, INC. 4001 WINFIELD ROAD, SUITE 600 WARRENVILLE, IL 60555 PHONE: 630-487-4600 WWW.KIMLEY-HORN.COM</small>	USER NAME = Kellen.Hinchey DESIGNED - DRAWN - CHECKED - DATE - 7/13/2022	REVISED - REVISED - REVISED - REVISED -	KANE COUNTY DIVISION OF TRANSPORTATION	DISTRICT 1 DETAILS MONTGOMERY ROAD AT VIRGIL GILMAN TRAIL	F.A.U. RTE. SECTION COUNTY	TOTAL SHEETS SHEET NO.
SCALE: SHEET OF SHEETS STA. TO STA.				ILLINOIS FED. AID PROJECT		
				CONTRACT NO. 6. 61H97		

MODEL: Default
 FILE NAME: C:\C:\US_T\DOT\168317003_Montgomery_Road_Kane_County\Phase B\2_Design\CADD_Plan_Sheets\168317003-shc-sd-det_03.dgn
 MODEL: Default
 FILE NAME: p:\workroom\dot\illinois\pwr\pww\DOT\Documents\DOT_Offices\District_1\Projects\168317003-shc-sd-det_03.dgn



MILLED TEMPORARY RAMP
(FOR BUTT JOINT AND HMA TAPER SEE DETAIL BELOW)

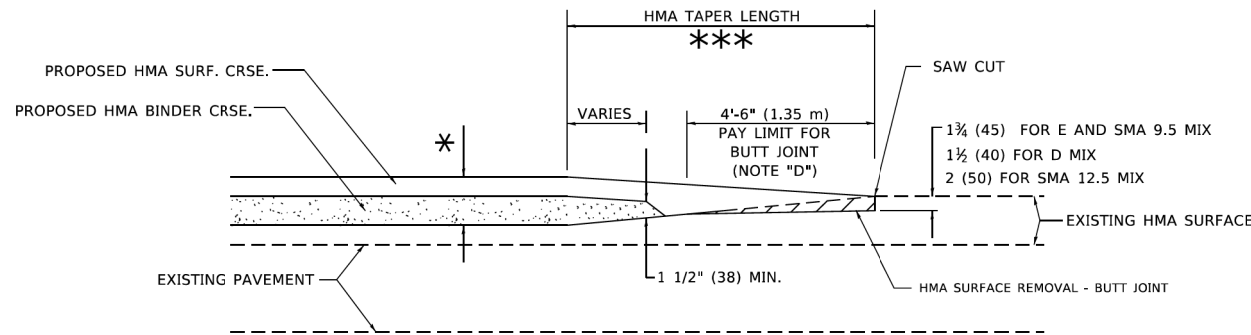
OPTION 1



HMA CONSTRUCTED TEMPORARY RAMP
(FOR BUTT JOINT AND HMA TAPER SEE DETAIL BELOW)

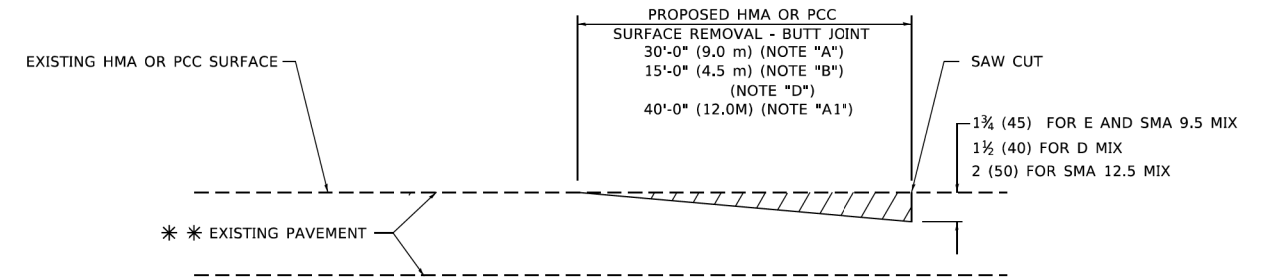
OPTION 2

TYPICAL TEMPORARY RAMP

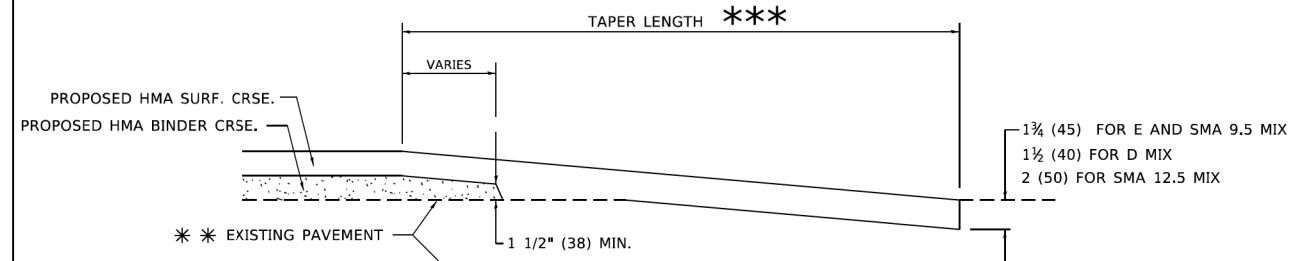


BUTT JOINT AND HMA TAPER

TYPICAL BUTT JOINT AND HMA TAPER FOR MILLING AND RESURFACING



BUTT JOINT DETAIL



HMA TAPER DETAIL

TYPICAL BUTT JOINT AND HMA TAPER FOR RESURFACING ONLY

*** PC CONCRETE, HMA OR HMA RESURFACED PAVEMENT.

GENERAL NOTES

- A. MAINLINE ARTERIAL ROADWAYS AND MAJOR SIDE ROADS.
- A1. INTERSTATES
- B. MINOR SIDE ROADS.
- C. THE TEMP. RAMP SHALL BE CONSTRUCTED IMMEDIATELY UPON REMOVAL OF THE EXISTING HMA SURFACE.
- D. THE BUTT JOINT SHALL BE CONSTRUCTED IMMEDIATELY PRIOR TO PLACING THE PROPOSED HMA COURSES.
- E. TAPER THE TEMP. RAMP AT A RATE OF 3' - 4" (1.02m) PER 1 INCH (25 mm) OF MILLING THICKNESS.
* SEE TYPICAL SECTIONS FOR MILLING THICKNESS.
- F. SEE ARTICLE 406.08 AND 406.14 OF THE STANDARD SPECIFICATIONS FOR "HMA AND/OR PCC SURFACE REMOVAL - BUTT JOINT".
*** 20'-0" (6.1 m) PER 1 (25) RESURFACING (NOTE "A")
10'-0" (3.0 m) PER 1 (25) RESURFACING (NOTE "B")

BASIS OF PAYMENT

- 1. THE BUTT JOINT WILL BE PAID FOR AT THE CONTRACT UNIT PRICE PER SQUARE YARD (SQUARE METER) FOR "HOT-MIX ASPHALT SURFACE REMOVAL - BUTT JOINT" OR FOR "PORTLAND CEMENT CONCRETE SURFACE REMOVAL - BUTT JOINT".
- 2. THE TEMPORARY RAMP AND SAW CUT SHALL BE INCLUDED IN THE UNIT COST FOR HMA OR PCC SURFACE REMOVAL-BUTT JOINT.

ALL DIMENSIONS ARE IN INCHES (MILLIMETERS) UNLESS OTHERWISE SHOWN.

USER NAME = demanchett	DESIGNED - M. DE YONG	REVISED - A. ABBAS 03-21-97
PLCT SCALE = 100.0000' / in.	CHECKED -	REVISED - M. GOMEZ 04-06-01
PLCT DATE = 2/2/2022	DATE - 06-13-90	REVISED - R. 3ORO 01-01-07
		REVISED - K. SMITH 02-01-22

STATE OF ILLINOIS
DEPARTMENT OF TRANSPORTATION

BUTT JOINT AND
HMA TAPER DETAILS

F.A.U. RTE.	SECTION	COUNTY	TOTAL SHEETS	SHEET NO.
SCALE: NONE	SHEET 1 OF 1 SHEETS	STA. TO STA.	BD400-05	BD-32
			CONTRACT NO.	
ILLINOIS FED. AID PROJECT				

MODEL: Default
FILE NAME: C:\C:\C\US_T\T\168317003_Montgomery_Road_Kane_County\Phase B\2_Design\CADD_Plan_Sheets\168317003-shc-sdc-dct_04.dgn

Kimley-Horn

USER NAME = Kellen.Hinchey	DESIGNED -	REVISED -
PLCT SCALE = 2,0000' / in.	CHECKED -	REVISED -
PLCT DATE = 7/13/2022	DATE - 7/13/2022	REVISED -

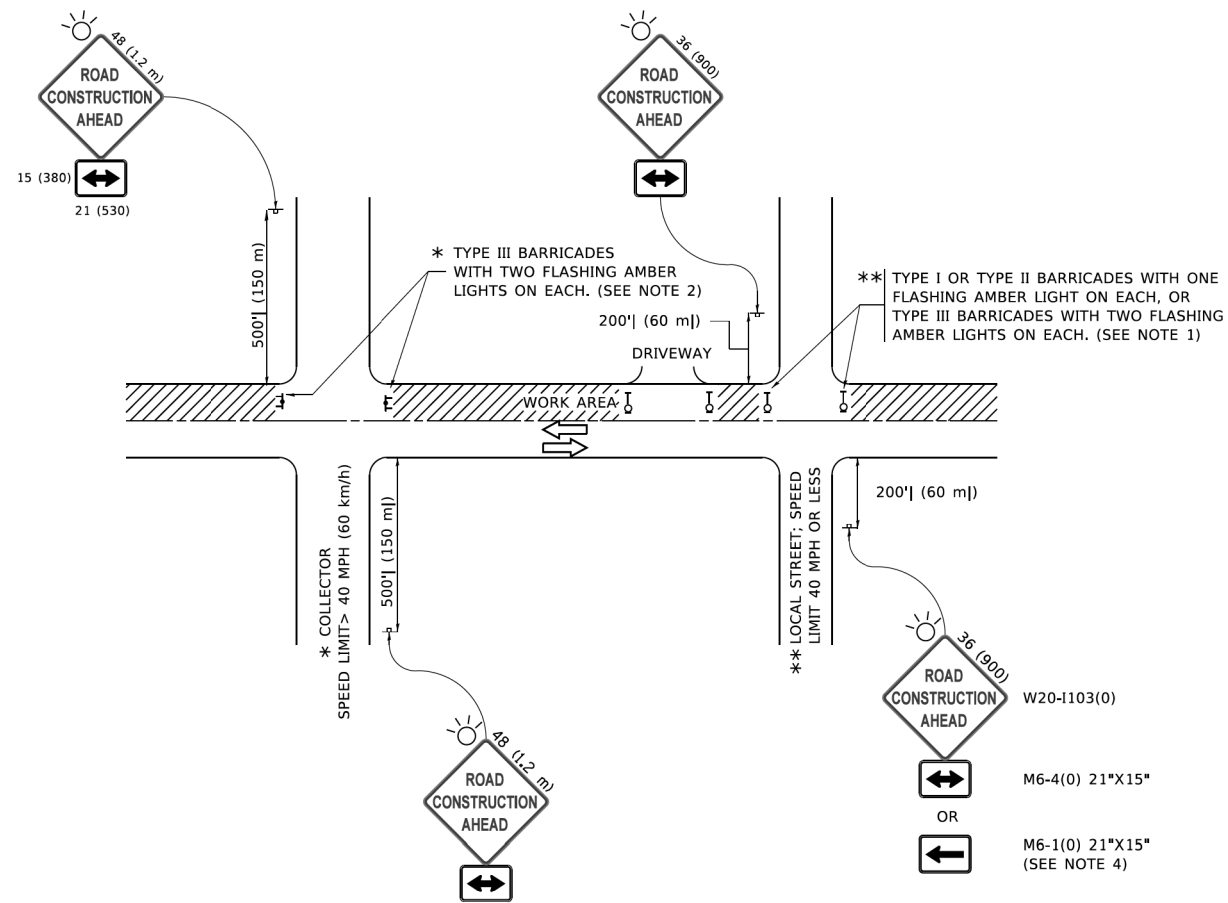
KANE COUNTY
DIVISION OF TRANSPORTATION

MONTGOMERY ROAD AT VIRGIL GILMAN TRAIL

F.A.U. RTE.	SECTION	COUNTY	TOTAL SHEETS	SHEET NO.
SCALE:	SHEET OF SHEETS	STA. TO STA.	3579	20-00524-01-5P
			KANE	
			CONTRACT NO. 61H97	
ILLINOIS FED. AID PROJECT				

MODEL: Default
 FILE NAME: C:\C:\C\US_T\TO_168317003_Montgomery_Road_Kane_County\Phase B\2_Design\CADD_Plan_Sheets\168317003-shc-sd-det_06.dgn

MODEL: Default
 FILE NAME: p:\vill\08EEB\INTEG\Illinois.spr\PWIDOT\Documents\DOT_Offices\Berkle_1\Projects\Dist5072x34\CADD\Plan_Sheets\168317003-shc-sd-det_06.dgn



NOTES:

- SIDE ROAD WITH A SPEED LIMIT OF 40 MPH (60 km/h) OR LESS AS SHOWN ON THE DRAWING AND AS DIRECTED BY THE ENGINEER:
 - ONE "ROAD CONSTRUCTION AHEAD" SIGN 36 x 36 (900x900) WITH A FLASHER MOUNTED ON IT APPROXIMATELY 200' (60 m) IN ADVANCE OF THE MAIN ROUTE.
 - THE CLOSED PORTION OF THE MAIN ROUTE SHALL BE PROTECTED BY BLOCKING WITH TYPE I, TYPE II OR TYPE III BARRICADES, 1/3 OF THE CROSS SECTION OF THE CLOSED PORTION.
- SIDE ROAD WITH A SPEED LIMIT GREATER THAN 40 MPH (60 km/h) AS SHOWN ON THE DRAWING AND AS DIRECTED BY THE ENGINEER:
 - ONE "ROAD CONSTRUCTION AHEAD" SIGN 48 x 48 (1.2 m x 1.2 m) WITH A FLASHER MOUNTED ON IT APPROXIMATELY 500' (150 m) IN ADVANCE OF THE MAIN ROUTE.
 - THE CLOSED PORTION OF THE MAIN ROUTE SHALL BE PROTECTED BY BLOCKING WITH TYPE III BARRICADES, 1/2 OF THE CROSS SECTION OF THE CLOSED PORTION.
- CONES MAY BE SUBSTITUTED FOR BARRICADES OR DRUMS AT HALF THE SPACING DURING DAY OPERATIONS. CONES SHALL BE A MINIMUM OF 28 (710) IN HEIGHT.
- SIGNING AND THE WORK ZONE, A SINGLE HEADED ARROW (M6-1) SHALL BE USED IN LIEU OF THE DOUBLE HEADED ARROW (M6-4).
- WHEN WORK IS BEING PERFORMED ON A SIDE ROAD OR DRIVEWAY, FOLLOW THE APPLICABLE STANDARD(S). THE DIRECTIONAL ARROW (M6-1 OR M6-4) SHALL BE COVERED OR REMOVED WHEN NO LONGER CONSISTENT WITH THE TRAFFIC CONTROL SET-UP.
- ADVANCE WARNING SIGNS ARE TO BE OMITTED ON DRIVEWAYS UNLESS OTHERWISE SPECIFIED IN THE PLANS OR BY THE ENGINEER.
- THE TRAFFIC CONTROL AND PROTECTION FOR SIDE ROADS, INTERSECTIONS, AND DRIVEWAYS SHALL BE INCLUDED IN THE COST OF SPECIFIED TRAFFIC CONTROL STANDARDS OR ITEMS.

All dimensions are in inches (millimeters) unless otherwise shown.

USER NAME = footemj	DESIGNED - L.H.A.	REVISED - A. HOUSEH 10-15-96	STATE OF ILLINOIS DEPARTMENT OF TRANSPORTATION	TRAFFIC CONTROL AND PROTECTION FOR SIDE ROADS, INTERSECTIONS, AND DRIVEWAYS			F.A.U. RTE.	SECTION	COUNTY	TOTAL SHEETS	SHEET NO.
	DRAWN -	REVISED - T. RAMMACHER 01-06-00		SCALE: NONE	SHEET 1	OF 1 SHEETS	STA.	TO STA.	TC-10		
PLCT SCALE = 50.0000 ' / in.	CHECKED -	REVISED - A. SCHUETZE 07-01-13					ILLINOIS			FED. AID PROJECT	
PLCT DATE = 3/4/2019	DATE - 06-89	REVISED - A. SCHUETZE 09-15-16					CONTRACT NO.				

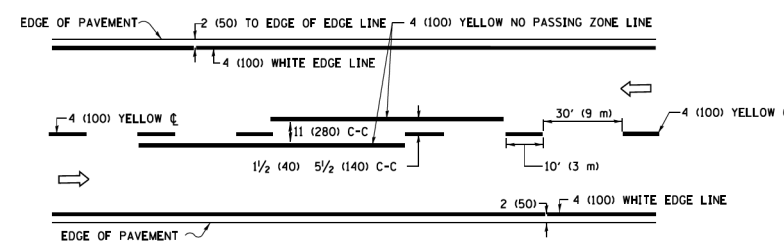


USER NAME = Kellen.Hinchey	DESIGNED -	REVISED -
	DRAWN -	REVISED -
PLOT SCALE = 2.0000 ' / in.	CHECKED -	REVISED -
PLOT DATE = 7/13/2022	DATE - 7/13/2022	REVISED -

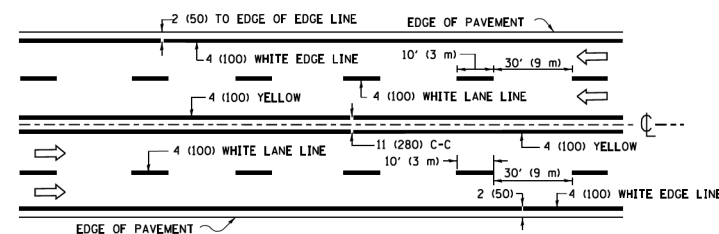
**KANE COUNTY
DIVISION OF TRANSPORTATION**

MONTGOMERY ROAD AT VIRGIL GILMAN TRAIL

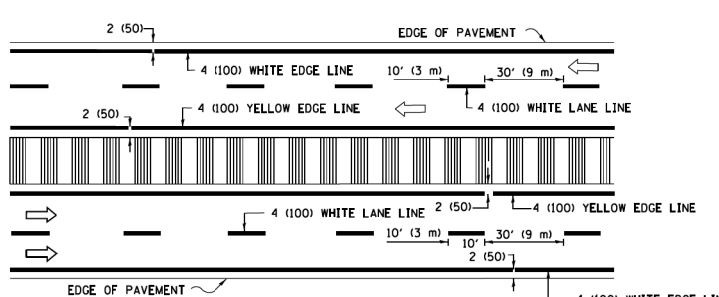
SCALE:	SHEET	OF	SHEETS	STA.	TO STA.	F.A.U. RTE.	SECTION	COUNTY	TOTAL SHEETS	SHEET NO.
						3579	20-00524-01-5P	KANE	22	21
						CONTRACT NO. 61H97				
						ILLINOIS FED. AID PROJECT				



2-LANE ROADWAY

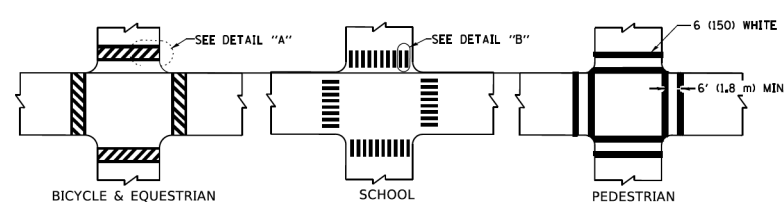


MULTI-LANE UNDIVIDED



MULTI-LANE DIVIDED WITH MEDIAN

TYPICAL LANE AND EDGE LINE MARKING

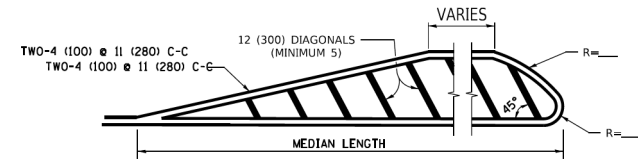


TYPICAL CROSSWALK MARKING

* MARKINGS SHALL BE INSTALLED PARALLEL TO THE CENTERLINE OF THE ROAD WHICH IT CROSSES



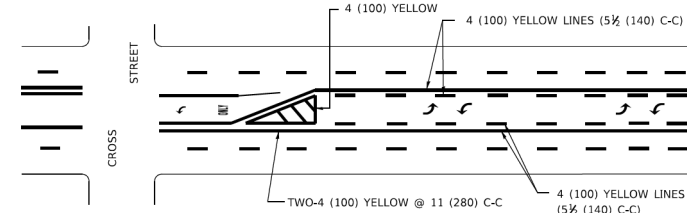
4' (1.2 m) WIDE MEDIANS ONLY



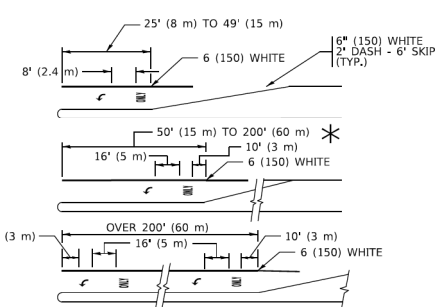
MEDIANS OVER 4' (1.2 m) WIDE

FOR MEDIAN LENGTHS WHERE DIAGONAL SPACING CANNOT BE ATTAINED, USE 5 (FIVE) EQUALLY SPACED DIAGONAL LINES.

DIAGONAL LINE SPACING: 50' (15 m) C-C (LESS THAN 30MPH (50 km/h))
75' (25 m) C-C 30MPH (50 km/h) TO 45MPH (70 km/h)
150' (45 m) C-C (MORE THAN 45MPH (70 km/h))



MEDIAN WITH TWO-WAY LEFT TURN LANE
TYPICAL PAINTED MEDIAN MARKING

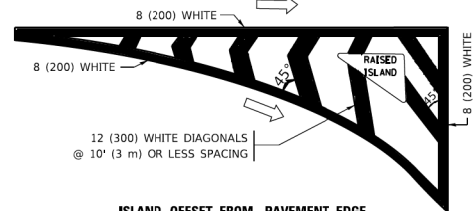


TYPICAL LEFT (OR RIGHT) TURN LANE

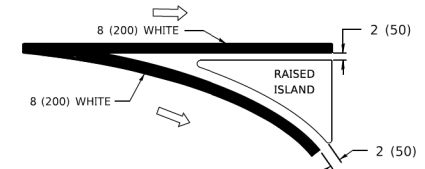
TYPICAL TURN LANE MARKING

FULL SIZE LETTERS 8" (2.4 m) AND ARROWS SHALL BE USED.
AREA = 15.6 SQ. FT. (1.5 m²) AREA = 20.8 SQ. FT. (1.9 m²)

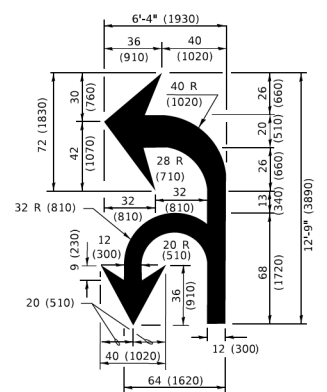
* TURN LANES IN EXCESS OF 400' (120 m) IN LENGTH MAY HAVE AN ADDITIONAL SET OF ARROW - "ONLY" INSTALLED MIDWAY BETWEEN THE OTHER TWO SETS OF ARROW - "ONLY".



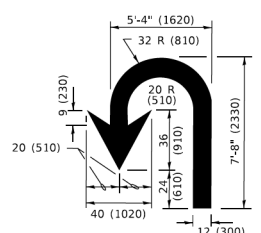
ISLAND OFFSET FROM PAVEMENT EDGE



ISLAND AT PAVEMENT EDGE
TYPICAL ISLAND MARKING



COMBINATION LEFT AND U-TURN



U-TURN

LANE REDUCTION TRANSITION

* LANE REDUCTION ARROWS REQUIRED AT SPEEDS OF 45 MPH OR GREATER OR WHEN SPECIFIED IN PLANS.

D(FT)	SPEED LIMIT
345	30
425	35
500	40
580	45
665	50
750	55

TYPE OF MARKING	WIDTH OF LINE	PATTERN	COLOR	SPACING / REMARKS
CENTERLINE ON 2 LANE PAVEMENT	4 (100)	SKIP-DASH	YELLOW	10' (3 m) LINE WITH 30' (9 m) SPACE
CENTERLINE ON MULTI-LANE UNDIVIDED PAVEMENT	2 @ 4 (100)	SOLID	YELLOW	11 (280) C-C
NO PASSING ZONE LINES: FOR ONE DIRECTION FOR BOTH DIRECTIONS	4 (100) 2 @ 4 (100)	SOLID SOLID	YELLOW YELLOW	5 1/2 (140) C-C FROM SKIP-DASH CENTERLINE 11 (280) C-C OMIT SKIP-DASH CENTERLINE BETWEEN
LANE LINES	4 (100) 5 (125) ON FREEWAYS	SKIP-DASH SKIP-DASH	WHITE WHITE	10' (3 m) LINE WITH 30' (9 m) SPACE
DOTTED LINES (EXTENSIONS OF CENTER, LANE OR TURN LANE MARKINGS)	SAME AS LINE BEING EXTENDED	SKIP-DASH	SAME AS LINE BEING EXTENDED	2' (600) LINE WITH 6' (1.8 m) SPACE
EDGE LINES	4 (100)	SOLID	YELLOW-LEFT WHITE-RIGHT	OUTLINE MEDIANS IN YELLOW
TURN LANE MARKINGS	6 (150) LINE: FULL SIZE LETTERS & SYMBOLS (8" (2.4m))	SOLID	WHITE	SEE TYPICAL TURN LANE MARKING DETAIL
TWO WAY LEFT TURN MARKING	2 @ 4 (100) EACH DIRECTION 8" (2.4m) LEFT ARROW	SKIP-DASH AND SOLID IN PAIRS	YELLOW WHITE	10' (3 m) LINE WITH 30' (9 m) SPACE FOR SKIP-DASH; 5 1/2 (140) C-C BETWEEN SOLID LINE AND SKIP-DASH LINE SEE TYPICAL TWO-WAY LEFT TURN MARKING DETAIL
CROSSWALK LINES (PEDESTRIAN) A. DIAGONALS (BIKE & EQUESTRIAN) B. LONGITUDINAL BARS (SCHOOL)	2 @ 6 (150) 12 (300) @ 45° 12 (300) @ 90°	SOLID SOLID SOLID	WHITE WHITE WHITE	NOT LESS THAN 6' (1.8 m) APART 2' (600) APART SEE TYPICAL CROSSWALK MARKING DETAILS.
STOP LINES	24 (600)	SOLID	WHITE	PLACE 4' (1.2 m) IN ADVANCE OF AND PARALLEL TO CROSSWALK, IF PRESENT. OTHERWISE, PLACE AT DESIRED STOPPING POINT. PARALLEL TO CROSSROAD CENTERLINE, WHERE POSSIBLE.
PAINTED MEDIANS	2 @ 4 (100) WITH 12 (300) DIAGONALS @ 45° NO DIAGONALS USED FOR 4' (1.2 m) WIDE MEDIANS	SOLID	YELLOW: TWO WAY TRAFFIC WHITE: ONE WAY TRAFFIC	11 (280) C-C FOR THE DOUBLE LINE SEE TYPICAL PAINTED MEDIAN MARKING.
GORE MARKING AND CHANNELIZING LINES	8 (200) WITH 12 (300) DIAGONALS @ 45°	SOLID	WHITE	DIAGONALS: 15' (4.5 m) C-C (LESS THAN 30MPH (50 km/h)) 20' (6 m) C-C 30MPH (50 km/h) TO 45MPH (70 km/h) 30' (9 m) C-C (OVER 45MPH (70 km/h))
RAILROAD CROSSING	24 (600) TRANSVERSE LINES; "RR" IS 6' (1.8 m) LETTERS; 16 (400) LINE FOR "X"	SOLID	WHITE	SEE STATE STANDARD 780001 AREA OF: "R"=3.6 SQ. FT. (0.33 m ²) EACH "X"=54.0 SQ. FT. (5.0 m ²)
SHOULDER DIAGONALS (REQUIRED FOR SHOULDERS ≥ 8')	12 (300) @ 45°	SOLID	WHITE - RIGHT YELLOW - LEFT	50' (15 m) C-C (LESS THAN 30MPH (50 km/h)) 75' (25 m) C-C (30 MPH (50 km/h) TO 45MPH (70 km/h)) 150' (45 m) C-C (OVER 45MPH (70 km/h))
U TURN ARROW	SEE DETAIL	SOLID	WHITE	16.3 SF
2 ARROW COMBINATION LEFT AND U TURN	SEE DETAIL	SOLID	WHITE	30.4 SF

FOR FURTHER DETAILS ON PAVEMENT MARKING REFER TO STANDARD SPECIFICATIONS FOR ROAD AND BRIDGE CONSTRUCTION AND STATE STANDARD 780001.

All dimensions are in inches (millimeters) unless otherwise shown.

MODEL: D:\m\h\... PROJECTS\168317003-5-16-2019\168317003-5-16-2019.dwg

USER NAME = footemj	DESIGNED - EVERS	REVISED - C. JUCIUS 09-09-09
PLCT SCALE = 50.0000 ' / in.	CHECKED -	REVISED - C. JUCIUS 07-01-13
PLCT DATE = 3/4/2019	DATE - 03-19-90	REVISED - C. JUCIUS 12-21-15
		REVISED - C. JUCIUS 04-12-16

**STATE OF ILLINOIS
DEPARTMENT OF TRANSPORTATION**

**DISTRICT ONE
TYPICAL PAVEMENT MARKINGS**

SCALE: NONE SHEET 1 OF 2 SHEETS STA. TO STA.

F.A. RTE.	SECTION	COUNTY	TOTAL SHEETS	SHEET NO.
TC-13			CONTRACT NO.	
ILLINOIS			FED. AID PROJECT	



USER NAME = Kellen.Hinney	DESIGNED -	REVISED -
PLCT SCALE = 2.0000 ' / in.	CHECKED -	REVISED -
PLCT DATE = 7/13/2022	DATE - 7/13/2022	REVISED -

**KANE COUNTY
DIVISION OF TRANSPORTATION**

MONTGOMERY ROAD AT VIRGIL GILMAN TRAIL

SCALE: SHEET OF SHEETS STA. TO STA.

F.A.U. RTE.	SECTION	COUNTY	TOTAL SHEETS	SHEET NO.
3579	20-00524-01-5P	KANE	22	22
			CONTRACT NO. 61H97	
ILLINOIS			FED. AID PROJECT	