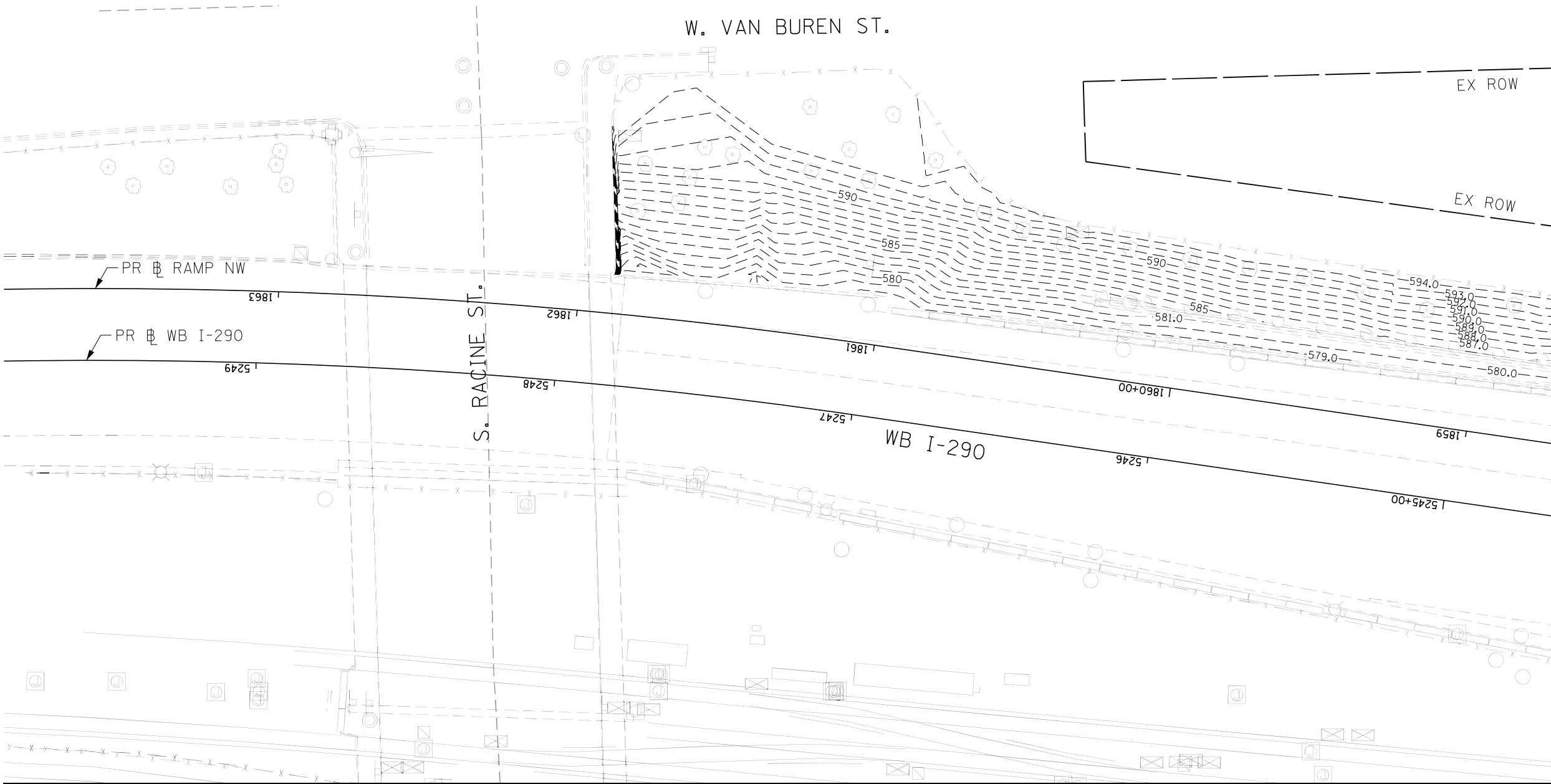
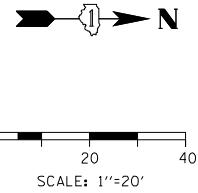


W. VAN BUREN ST.



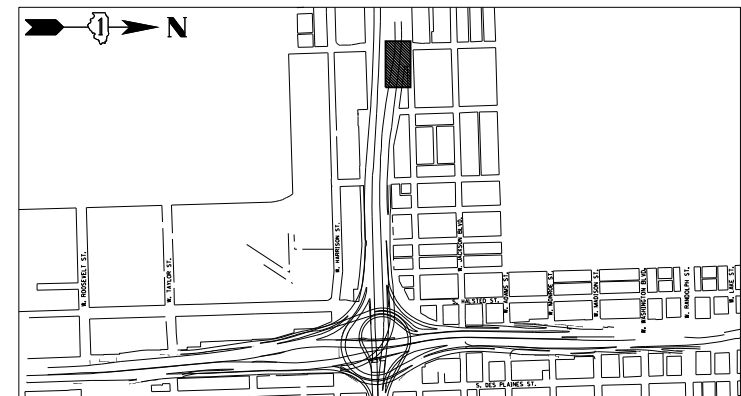
MATCH LINE
SEE SHEET NO. 200

MATCH LINE
SEE SHEET NO. 204

NOTES:

1. GRADING PLAN CONTOURS ARE BASED ON PREVIOUS JANE BYRNE INTERCHANGE CONTRACTS AND SHOULD BE FIELD VERIFIED.
2. GRADING PLANS SHOW CONTOURS OF EXISTING GROUND AT THE BEGINNING OF CONTRACT 60X98. THE GRADING SHOULD BE REESTABLISHED AS THE FINAL GRADES AFTER ALL PROPOSED CONTRACT 60X98 WORK. CONTOURS REFLECT THE "FINISH GRADE" AS SHOWN ON SECTIONS 153 TO 161.

KEY PLAN:



FILE PATH = p:\vaecoma-na-pubentleu.com\ECDM_D502_NA\Documents\01_Americas\Transportation\60265938_Circula_Phase_1\000_CAD\005-Roadway_Sheets\60x98_Contract\DI60x98-Sht-Grading-33.dgn



DI60x98-Sht-Grading-33.dgn
USER NAME = dwojyer
PLOT SCALE = 40.0000' / in.
PLOT DATE = 3/21/2022

DESIGNED - MRC	REVISED -
DRAWN - KM	REVISED -
CHECKED - JMG	REVISED -
DATE - 3/18/2022	REVISED -

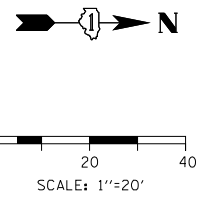
STATE OF ILLINOIS
DEPARTMENT OF TRANSPORTATION

GRADING PLAN

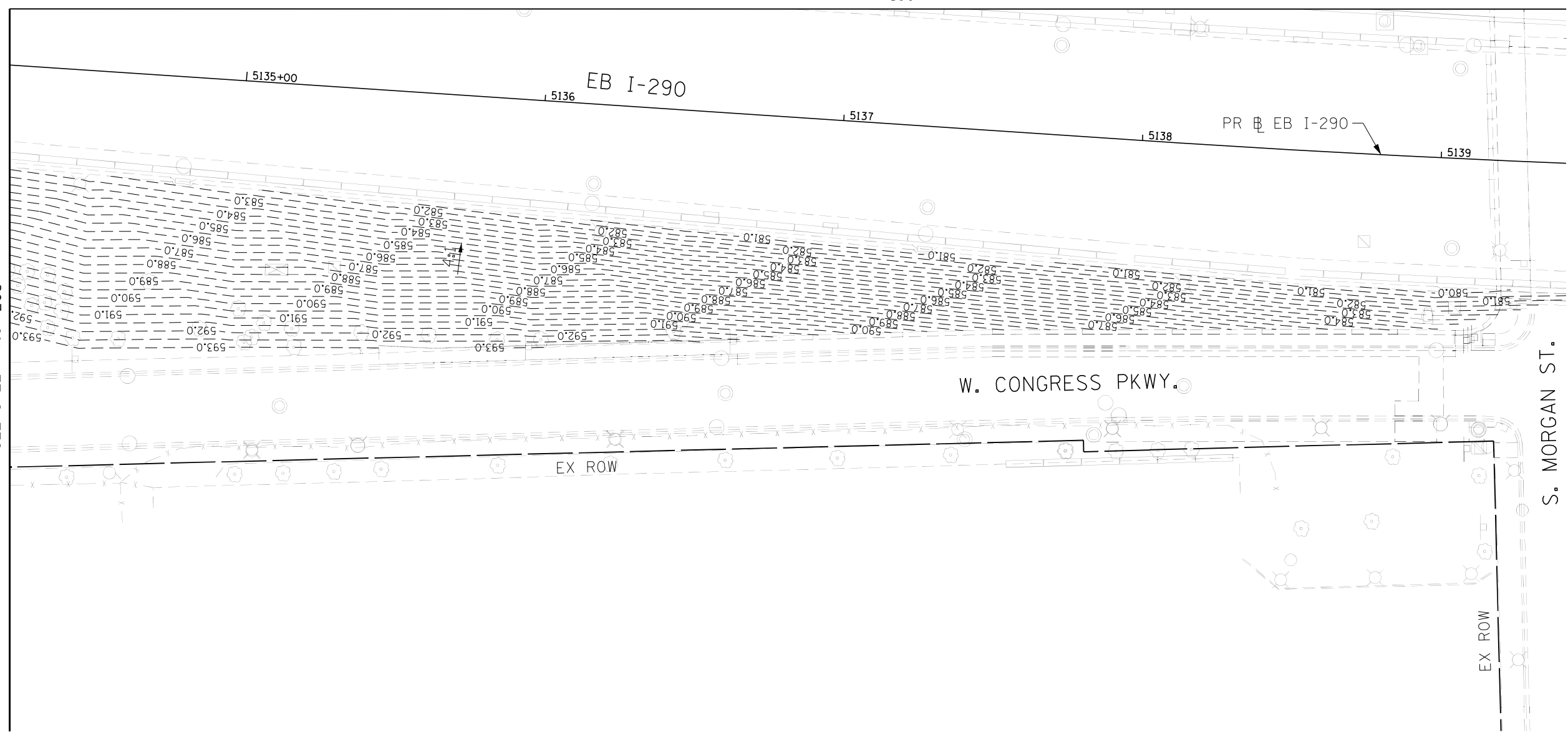
SCALE: 1"=20' SHEET 35 OF 40 SHEETS STA. TO STA.

F.A.I. RTE.	SECTION	COUNTY	TOTAL SHEETS	SHEET NO.
90/94/290	2014-012LS	COOK	220	201
CONTRACT NO. 60X98				
ILLINOIS FED. AID PROJECT				

MATCH LINE
SEE SHEET NO. 199

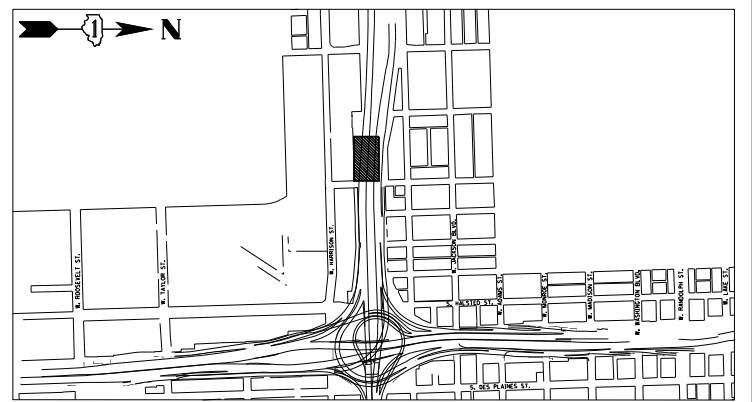


MATCH LINE
SEE SHEET NO. 203



- NOTES:
1. GRADING PLAN CONTOURS ARE BASED ON PREVIOUS JANE BYRNE INTERCHANGE CONTRACTS AND SHOULD BE FIELD VERIFIED.
 2. GRADING PLANS SHOW CONTOURS OF EXISTING GROUND AT THE BEGINNING OF CONTRACT 60X98. THE GRADING SHOULD BE REESTABLISHED AS THE FINAL GRADES AFTER ALL PROPOSED CONTRACT 60X98 WORK. CONTOURS REFLECT THE "FINISH GRADE" AS SHOWN ON SECTIONS 153 TO 161.

KEY PLAN:



FILE PATH = p:\aecom\na-pub\entleu\com\ECOM_D502_NA\Documents\01_Americas\Transportation\60265938_Circle\Phase_1\000_CAD\005-Roadway\Sheets\60x98_Contract\DI60x98-Sht-Grading-34.dgn



DI60x98-Sht-Grading-34.dgn	DESIGNED - MRC	REVISED -
USER NAME = dwhojey	DRAWN - KM	REVISED -
PLOT SCALE = 40.0000' / in.	CHECKED - JMG	REVISED -
PLOT DATE = 3/21/2022	DATE - 3/18/2022	REVISED -

STATE OF ILLINOIS
DEPARTMENT OF TRANSPORTATION

GRADING PLAN

SCALE: 1"=20' SHEET 36 OF 40 SHEETS STA. TO STA.

F.A.I. RTE. 90/94/290	SECTION 2014-012LS	COUNTY COOK	TOTAL SHEETS 220	SHEET NO. 202
CONTRACT NO. 60X98				
ILLINOIS FED. AID PROJECT				

MATCH LINE
SEE SHEET NO. 200

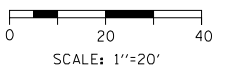
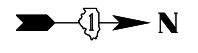
5132 EB I-290 5133

PR EB I-290 5134

W. CONGRESS PKWY.

S. ABERDEEN ST.

W. CONGRESS PKWY.



MATCH LINE
SEE SHEET NO. 204

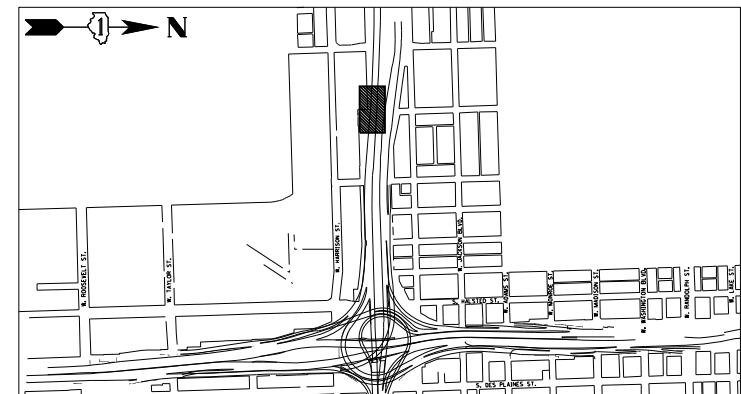
MATCH LINE
SEE SHEET NO. 202

FILE PATH = p:\vaecoma-na-pub\entleucom\ECOM_D502_NA\Documents\01_Americas\Transportation\606265938_Circle_Phase_1\000_CAD\005-Roadway\Sheets\60698_Contract\DI60X98-Sht-Grading-35.dgn

NOTES:

1. GRADING PLAN CONTOURS ARE BASED ON PREVIOUS JANE BYRNE INTERCHANGE CONTRACTS AND SHOULD BE FIELD VERIFIED.
2. GRADING PLANS SHOW CONTOURS OF EXISTING GROUND AT THE BEGINNING OF CONTRACT 60X98. THE GRADING SHOULD BE REESTABLISHED AS THE FINAL GRADES AFTER ALL PROPOSED CONTRACT 60X98 WORK. CONTOURS REFLECT THE "FINISH GRADE" AS SHOWN ON SECTIONS 153 TO 161.

KEY PLAN:



DI60X98-Sht-Grading-35.dgn
USER NAME = dwhojyer
PLOT SCALE = 40.0000' / in.
PLOT DATE = 3/21/2022

DESIGNED - MRC
DRAWN - KM
CHECKED - JMG
DATE - 3/18/2022

REVISED -
REVISED -
REVISED -
REVISED -

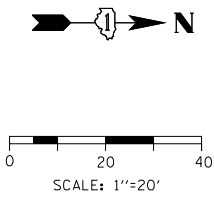
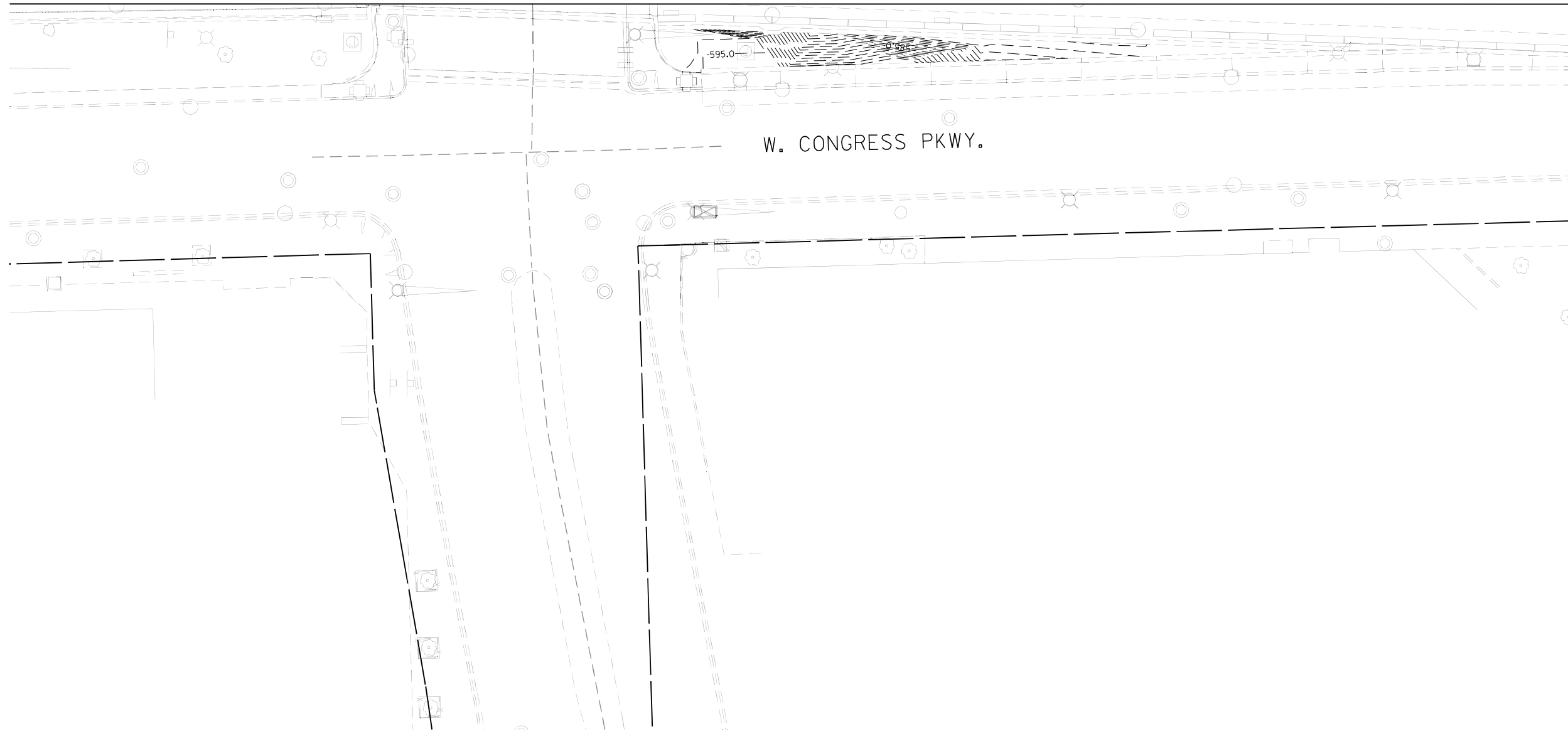
**STATE OF ILLINOIS
DEPARTMENT OF TRANSPORTATION**

GRADING PLAN

SCALE: 1"=20' SHEET 37 OF 40 SHEETS STA. TO STA.

F.A.I. RTE.	SECTION	COUNTY	TOTAL SHEETS	SHEET NO.
90/94/290	2014-012LS	COOK	220	203
CONTRACT NO. 60X98				
ILLINOIS FED. AID PROJECT				

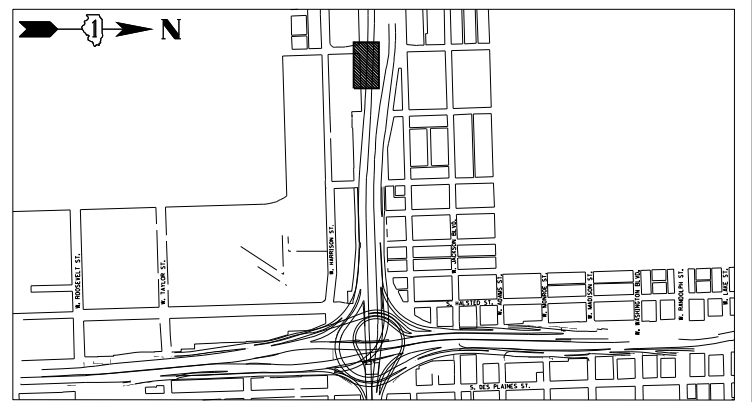
MATCH LINE
SEE SHEET NO. 201



MATCH LINE
SEE SHEET NO. 203

- NOTES:
1. GRADING PLAN CONTOURS ARE BASED ON PREVIOUS JANE BYRNE INTERCHANGE CONTRACTS AND SHOULD BE FIELD VERIFIED.
 2. GRADING PLANS SHOW CONTOURS OF EXISTING GROUND AT THE BEGINNING OF CONTRACT 60X98. THE GRADING SHOULD BE REESTABLISHED AS THE FINAL GRADES AFTER ALL PROPOSED CONTRACT 60X98 WORK. CONTOURS REFLECT THE "FINISH GRADE" AS SHOWN ON SECTIONS 153 TO 161 .

KEY PLAN:



FILE PATH = p:\a\ecom\ra-pub\ben\leu\comp\ECOM_D502_NA\Documents\01_Americas\Transportation\60265938_Circle_Phase_1\000_CAD\005-Roadway\Sheets\60x98_Contract\DI60x98-Sht-Grading-35A.dgn



DI60x98-Sht-Grading-35A.dgn	DESIGNED - MRC	REVISED -
USER NAME = dwojyer	DRAWN - KM	REVISED -
PLOT SCALE = 40.0000' / in.	CHECKED - JMG	REVISED -
PLOT DATE = 3/21/2022	DATE - 3/18/2022	REVISED -

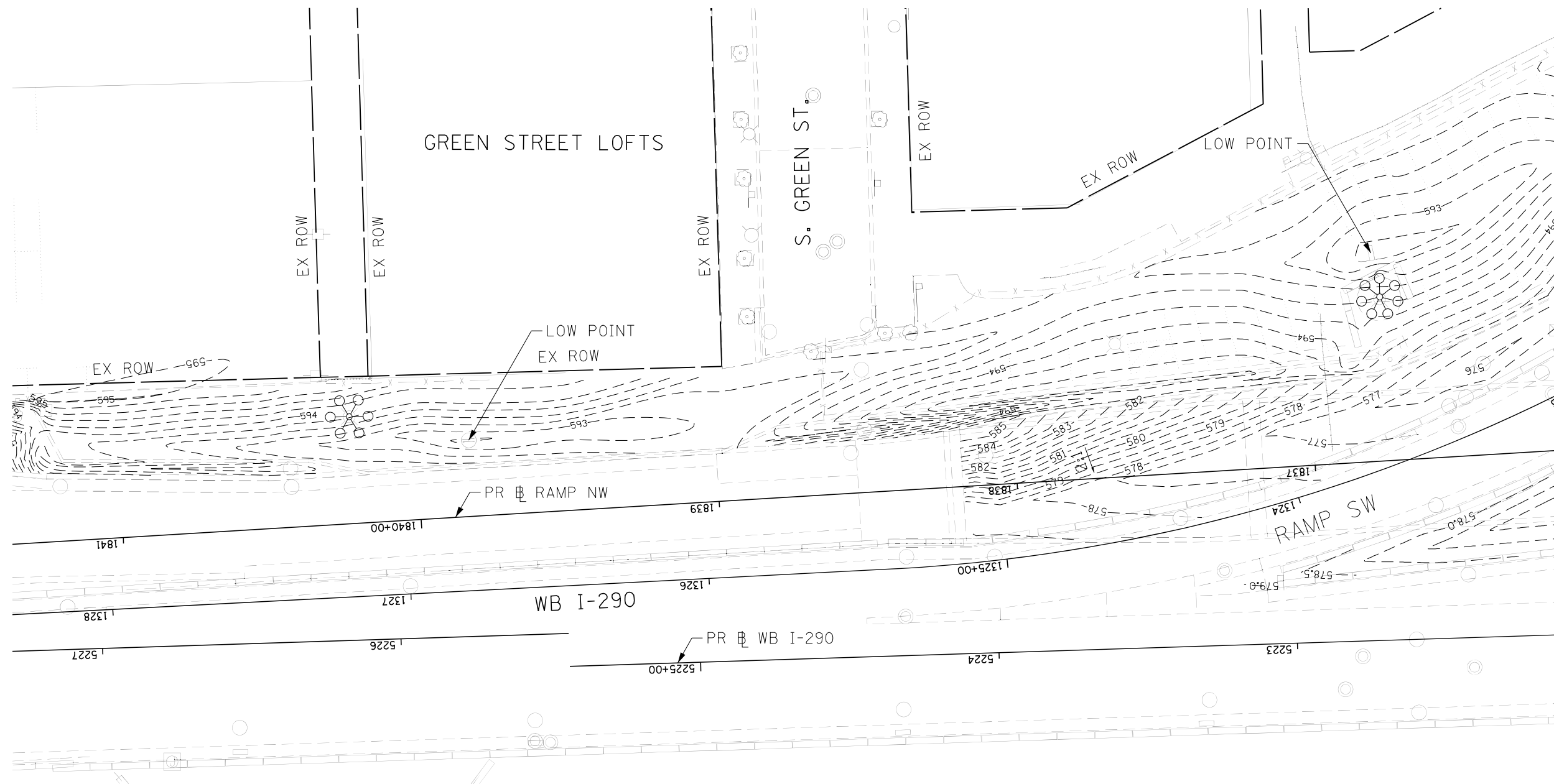
STATE OF ILLINOIS
DEPARTMENT OF TRANSPORTATION

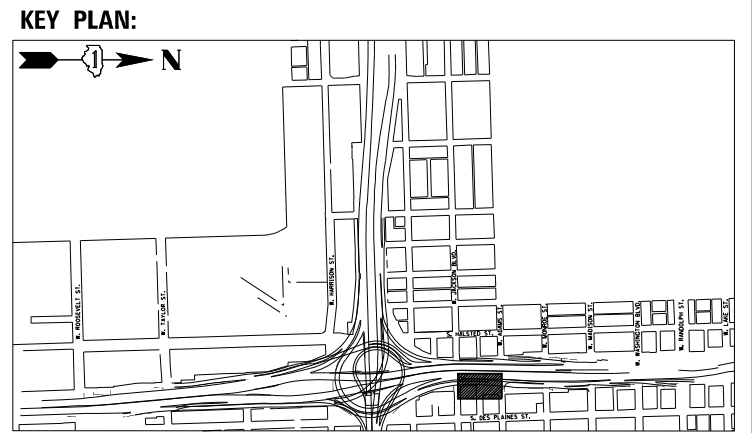
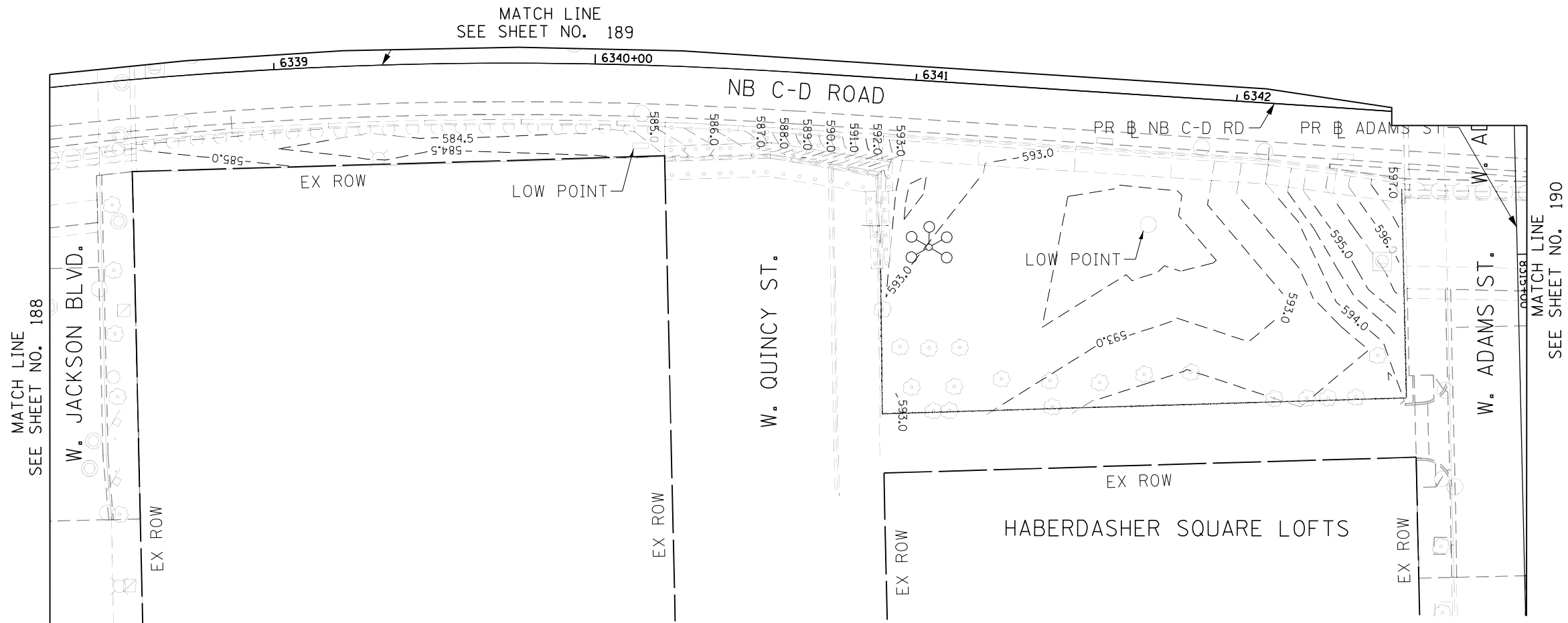
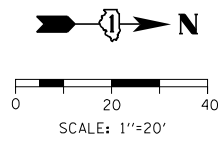
GRADING PLAN

SCALE: 1"=20' SHEET 37 OF 40 SHEETS STA. TO STA.

F.A.I. RTE. 90/94/290	SECTION 2014-012LS	COUNTY COOK	TOTAL SHEETS 220	SHEET NO. 204
CONTRACT NO. 60X98				
ILLINOIS FED. AID PROJECT				

FILE PATH = p:\a\com-na-pub\ent\com\ECOM_D502_NA\Documents\01_Americas\Transportation\60X98-Roadway\Sheets\60X98-Contract\DI60X98-Sht-Grading-36.dgn





- NOTES:
1. GRADING PLAN CONTOURS ARE BASED ON PREVIOUS JANE BYRNE INTERCHANGE CONTRACTS AND SHOULD BE FIELD VERIFIED.
 2. GRADING PLANS SHOW CONTOURS OF EXISTING GROUND AT THE BEGINNING OF CONTRACT 60X98. THE GRADING SHOULD BE REESTABLISHED AS THE FINAL GRADES AFTER ALL PROPOSED CONTRACT 60X98 WORK. CONTOURS REFLECT THE "FINISH GRADE" AS SHOWN ON SECTIONS 153 TO 161.

FILE PATH = p:\a\ecom\na-pub\ent\leu\com\ECOM_D502_NA\Documents\01_Americas\Transportation\60265938_Circle_Phase_1\000_CAD\005-Roadway\Sheets\60x98_Contract\DI60x98-Sht-Grading-37.dgn



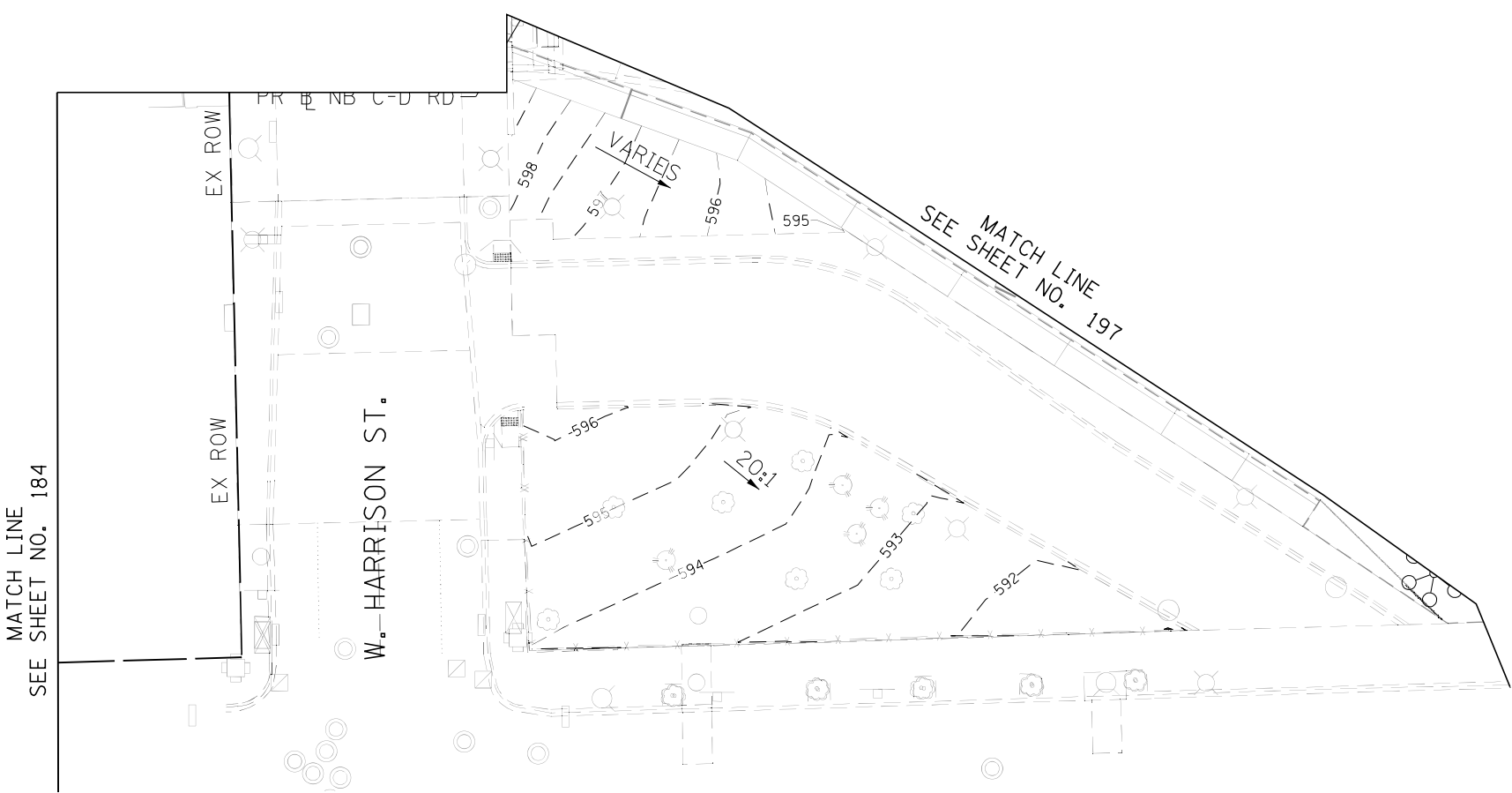
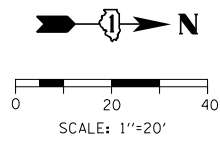
DI60x98-Sht-Grading-37.dgn	DESIGNED - MRC	REVISED -
USER NAME = dwhojyer	DRAWN - KM	REVISED -
PLOT SCALE = 40.0000' / in.	CHECKED - JMG	REVISED -
PLOT DATE = 3/21/2022	DATE - 3/18/2022	REVISED -

**STATE OF ILLINOIS
DEPARTMENT OF TRANSPORTATION**

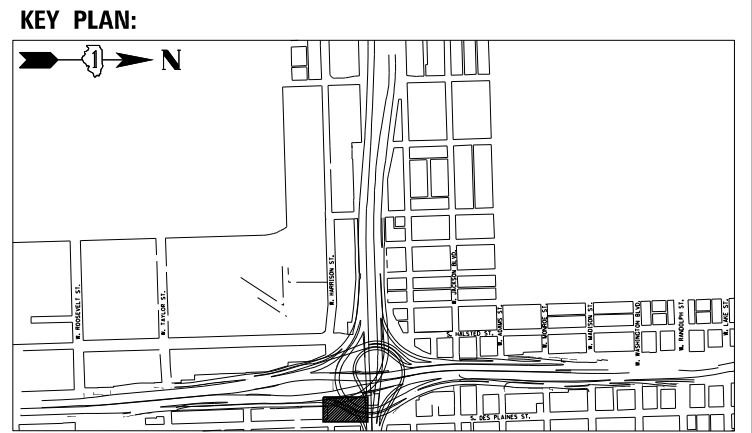
GRADING PLAN

SCALE: 1"=20' SHEET 39 OF 40 SHEETS STA. TO STA.

F.A.I. RTE.	SECTION	COUNTY	TOTAL SHEETS	SHEET NO.
90/94/290	2014-012LS	COOK	220	206
CONTRACT NO. 60X98				
ILLINOIS FED. AID PROJECT				



- NOTES:
1. GRADING PLAN CONTOURS ARE BASED ON PREVIOUS JANE BYRNE INTERCHANGE CONTRACTS AND SHOULD BE FIELD VERIFIED.
 2. GRADING PLANS SHOW CONTOURS OF EXISTING GROUND AT THE BEGINNING OF CONTRACT 60X98. THE GRADING SHOULD BE REESTABLISHED AS THE FINAL GRADES AFTER ALL PROPOSED CONTRACT 60X98 WORK. CONTOURS REFLECT THE "FINISH GRADE" AS SHOWN ON SECTIONS 153 TO 161.



FILE PATH = p:\a\com-na-pub\ent\leu\com\ECOM_D502_NA\Documents\01_Americas\Transportation\60265938_Circle\Phase_1\000_CAD\005_Roadway\Sheets\60x98_Contract\DI60x98-Sht-Grading-38.dgn



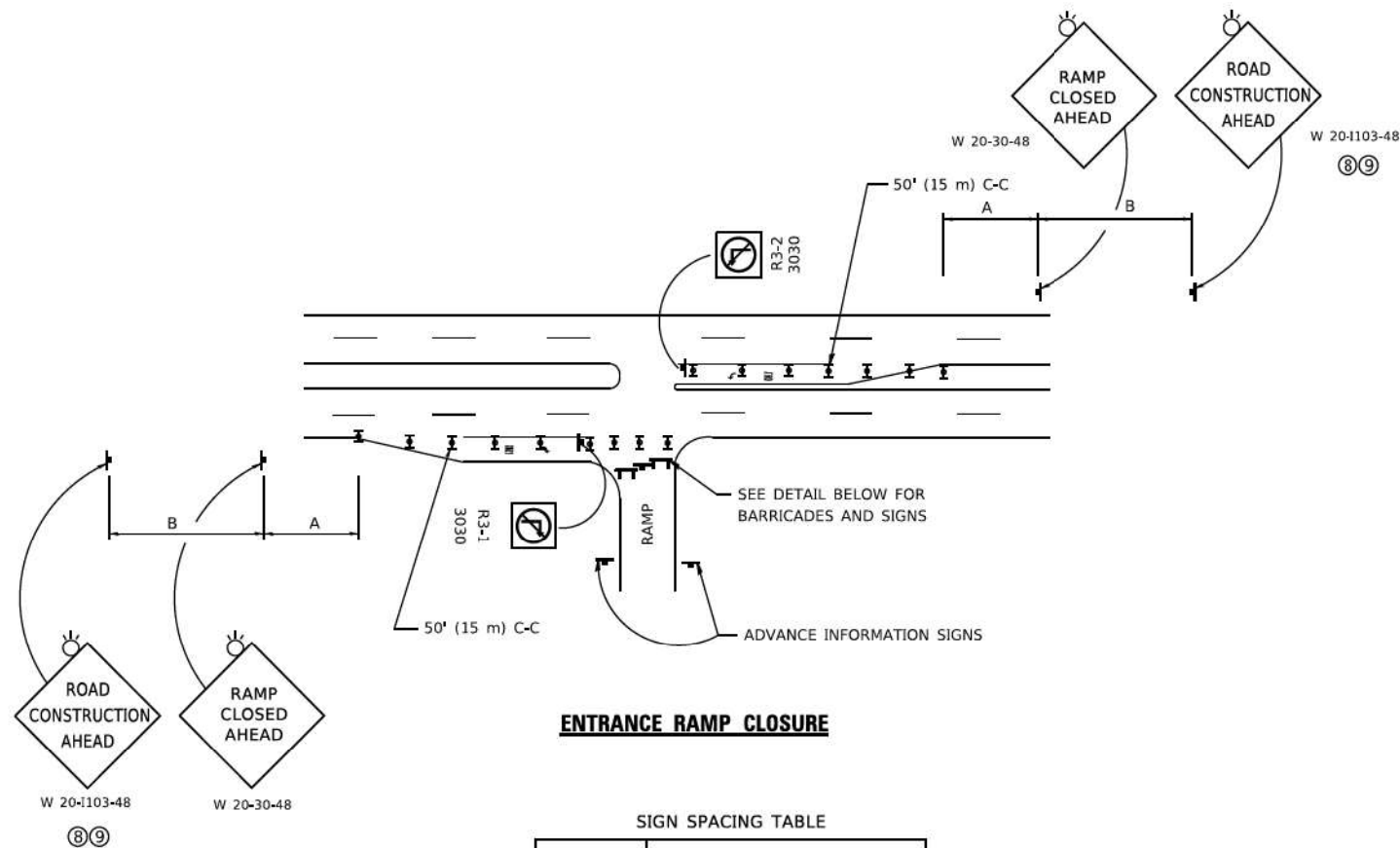
DI60x98-Sht-Grading-38.dgn	DESIGNED - MRC	REVISED -
USER NAME = dwhojyer	DRAWN - KM	REVISED -
PLOT SCALE = 40.0000' / in.	CHECKED - JMG	REVISED -
PLOT DATE = 3/21/2022	DATE - 3/18/2022	REVISED -

**STATE OF ILLINOIS
DEPARTMENT OF TRANSPORTATION**

GRADING PLAN

SCALE: 1"=20' SHEET 40 OF 40 SHEETS STA. TO STA.

F.A.I. RTE.	SECTION	COUNTY	TOTAL SHEETS	SHEET NO.
90/94/290	2014-012LS	COOK	220	207
CONTRACT NO. 60X98				
ILLINOIS FED. AID PROJECT				

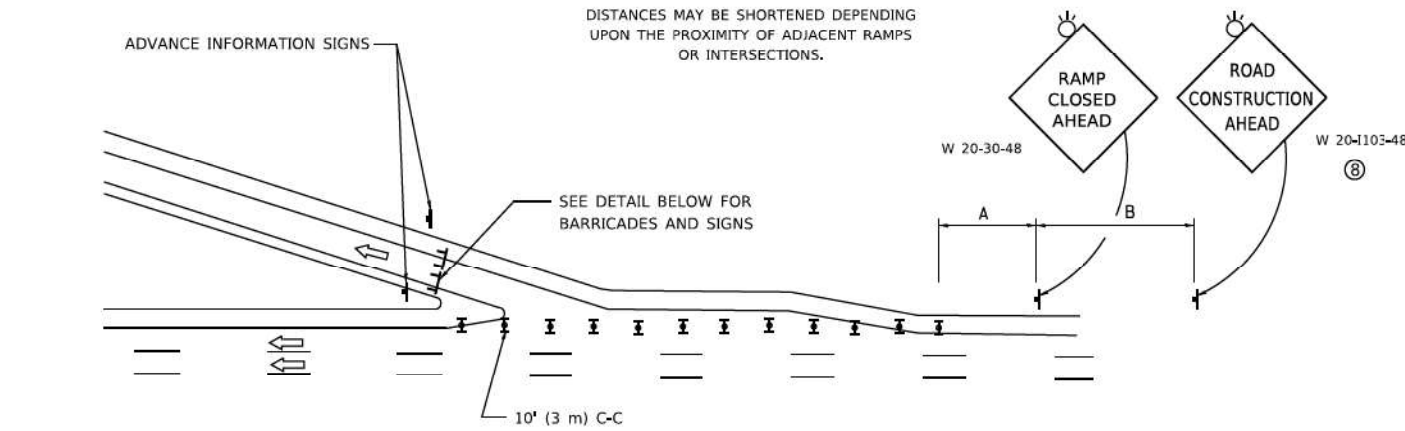


ENTRANCE RAMP CLOSURE

SIGN SPACING TABLE

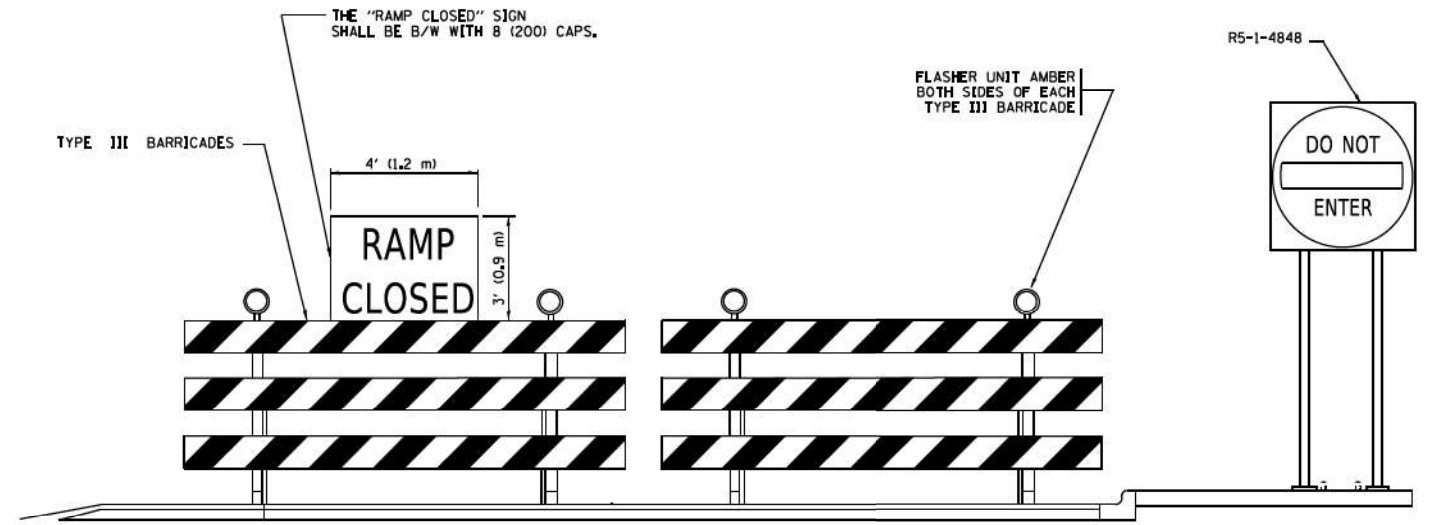
FACILITY	DISTANCE BETWEEN SIGNS	
	A	B
EXPRESSWAY >24 HOURS	1000' (300 m)	1500' (450 m)
EXPRESSWAY ≤24 HOURS	500' (150 m)	500' (150 m)
ARTERIAL 55 MPH	500' (150 m)	500' (150 m)
ARTERIAL 50-45 MPH	350' (100 m)	350' (100 m)
ARTERIAL <45 MPH	200' (60 m)	200' (60 m)

DISTANCES MAY BE SHORTENED DEPENDING UPON THE PROXIMITY OF ADJACENT RAMPS OR INTERSECTIONS.



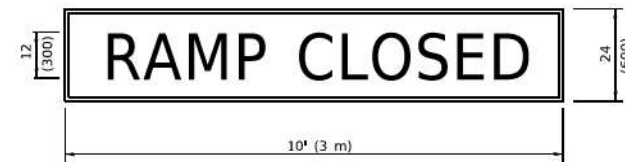
EXIT RAMP CLOSURE

- SYMBOLS**
- ▬ TYPE II BARRICADE OR DRUM
 - ▬ TYPE III BARRICADE WITH 2 FLASHING LIGHTS



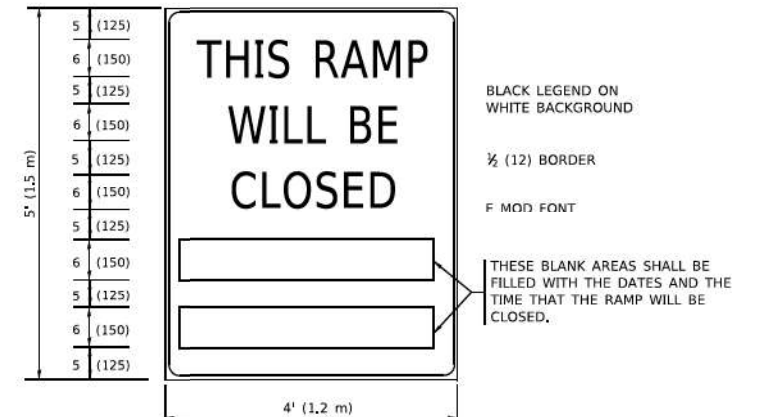
DETAIL FOR REQUIRED BARRICADES & SIGNS

RAMP CLOSURE ADVANCE WARNING SIGN



BLACK LEGEND ON ORANGE BACKGROUND MOUNTED DIAGONALLY
E MOD FONT
1 (25) BORDER
THESE SIGNS ARE REQUIRED ON ALL THE EXIT GUIDE SIGNS FOR EXIT RAMPS THAT WILL BE CLOSED FOR MORE THAN FOUR (4) CONSECUTIVE DAYS.

RAMP CLOSURE ADVANCE INFORMATION SIGN



THESE SIGNS ARE REQUIRED ON BOTH SIDES OF THE RAMP, MINIMUM OF 1 WEEK IN ADVANCE OF THE CLOSURE.
THESE SIGNS SHALL BE FABRICATED AND PAID FOR ACCORDING TO THE TEMPORARY INFORMATION SIGNING SPECIAL PROVISION

GENERAL NOTES:

- 1 CONES MAY BE SUBSTITUTED FOR DRUMS OR TYPE II BARRICADES DURING DAY OPERATIONS. CONES SHALL BE A MINIMUM OF 28 (700) HIGH.
- 2 VERTICAL BARRICADES SHALL NOT BE USED FOR RAMP CLOSURES.
- 3 A FLAGGER SHALL BE POSITIONED AT EACH CLOSED RAMP THAT IS OPEN TO CONSTRUCTION VEHICLES, PRECEDED BY A W20-7 FLAGGER WARNING SIGN.
- 4 ALL ROUTE MARKERS AND TRAILBLAZER ASSEMBLIES WHICH DIRECT MOTORISTS TO A CLOSED ENTRANCE RAMP SHALL BE COVERED WHEN THE RAMP IS CLOSED FOR MORE THAN FOUR (4) DAYS.
- 5 THE SIGNING AND BARRICADING WHICH IS REQUIRED BY THIS DETAIL SHALL BE INCLUDED IN THE COST OF TRAFFIC CONTROL AND PROTECTION (EXPRESSWAYS).
- 6 AUTHORIZATION FROM THE DISTRICT'S BUREAU OF TRAFFIC IS REQUIRED FOR ALL RAMP CLOSURES.
- 7 THE RAMP CLOSURE ADVANCE INFORMATION SIGNS SHALL BE ERECTED IF THE CLOSURE TIME EXCEEDS TWENTY-FOUR (24) HOURS. ADDITIONAL ADVANCE WARNING SIGNS ON EXIT GUIDE SIGNING WILL BE REQUIRED FOR EXIT RAMP CLOSURES THAT EXCEED FOUR (4) DAYS IN LENGTH.
- 8 ROAD CONSTRUCTION AHEAD SIGNS MAY BE OMITTED WHEN THIS DETAIL IS USED IN CONJUNCTION WITH OTHER TRAFFIC CONTROL THAT ALREADY INCLUDES A ROAD CONSTRUCTION AHEAD SIGN.
- 9 ARTERIAL ROAD CONSTRUCTION AHEAD SIGNS SHALL BE INSTALLED ON THE LEFT SIDE OF TRAFFIC IF THE MEDIAN IS MORE THAN 10 FT WIDE.

ALL DIMENSIONS ARE IN INCHES (MILLIMETERS) UNLESS OTHERWISE SHOWN.

MODEL: D:\in\... FILE NAME: p... PROJECT: ...

USER NAME - footern	DESIGNED - D.W.S.	REVISED - S.P.B._01-07
DRAWN -	REVISED - S.P.B._12-09	
PLOT SCALE - 50,0000 1 / 16	CHECKED -	REVISED - M.D._06-13
PLOT DATE - 3/4/2019	DATE - 02-83	REVISED - M.D._01-18

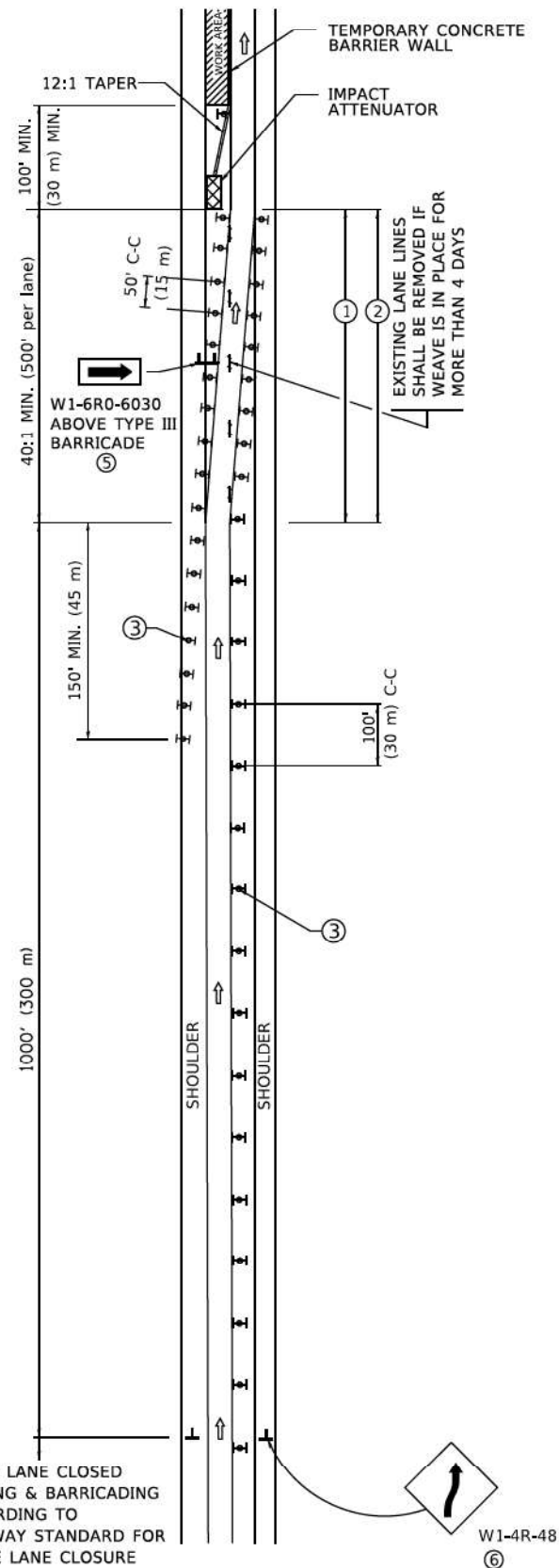
**STATE OF ILLINOIS
DEPARTMENT OF TRANSPORTATION**

**ENTRANCE AND EXIT RAMP
CLOSURE DETAILS**

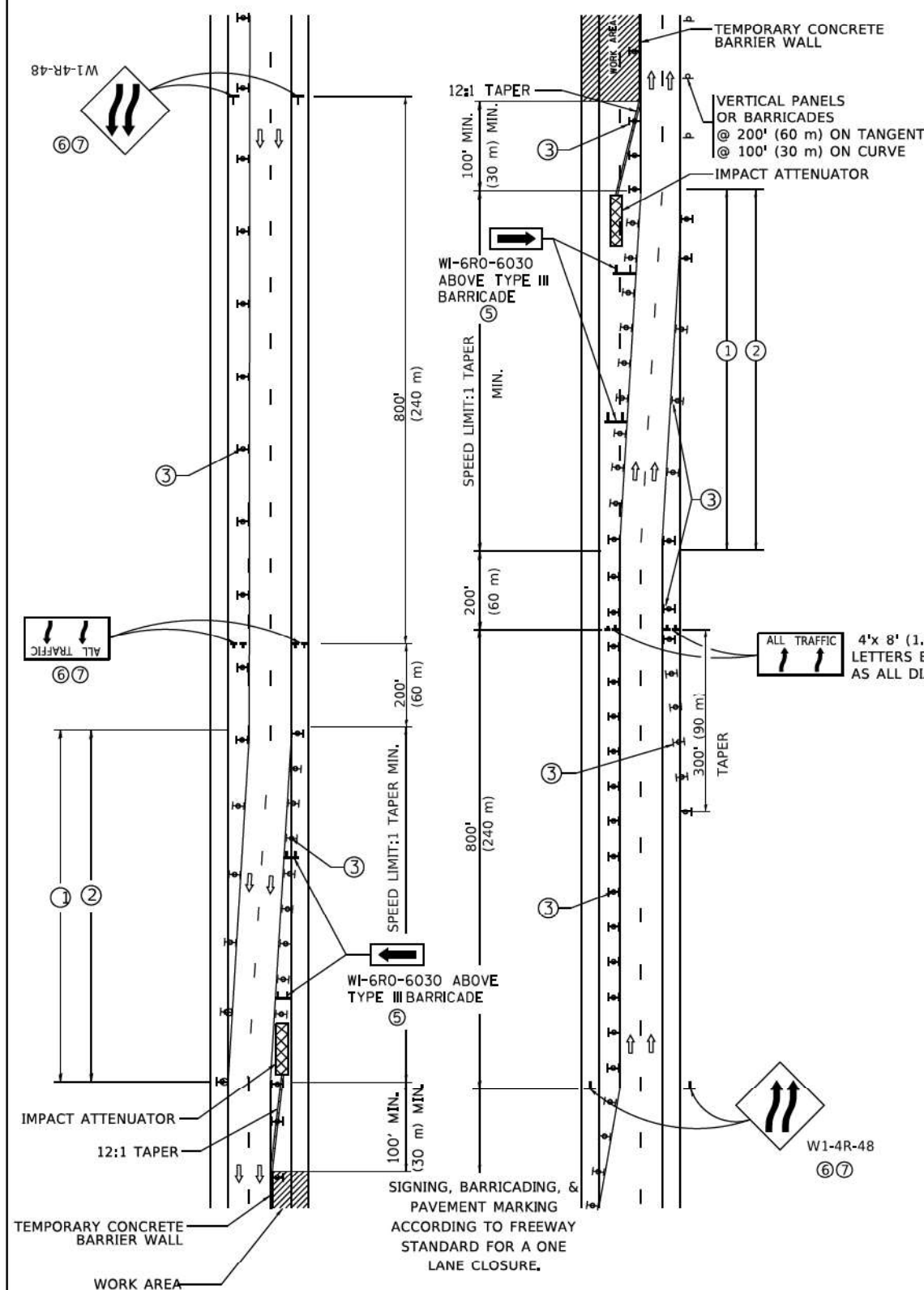
SCALE: NONE SHEET 1 OF 6 SHEETS STA. TO STA.

F.A. RTE.	SECTION	COUNTY	TOTAL SHEETS	SHEET NO.
			220	208
TC-08			CONTRACT NO. 60X98	
ILLINOIS FED. AID PROJECT				

SINGLE LANE WEAVE



MULTI-LANE WEAVE



- GENERAL NOTES:**
- EXISTING CONFLICTING PAVEMENT MARKING LINES SHALL BE REMOVED. PAVEMENT MARKING REMOVAL SHALL NOT BE REQUIRED FOR SINGLE LANE WEAVES UNDER 4 DAYS IN DURATION.
 - CONTINUOUS REFLECTIVE TEMPORARY PAVEMENT MARKING TAPE SHALL BE PLACED THROUGHOUT THE TAPER AND FOR 300' (90 m) ALONG SIDE THE WORK AREA WHERE THE CLOSURE TIME IS GREATER THAN FOURTEEN DAYS. THE LEFT EDGE LINE SHALL BE YELLOW AND THE RIGHT EDGE LINE SHALL BE WHITE. FOR MULTI-LANE WEAVES LANE LINES SHALL BE 5 INCH, 10'-30' (3 m-9 m) SKIP DASH, WHITE.
 - PLASTIC DRUMS WITH STEADY BURN LIGHTS AT 50' (15 m) C-C SPACING IN TAPERS AND 100' (30 m) C-C SPACING IN TANGENTS.
 - ALL SIGNS SHALL BE POST MOUNTED IF THE CLOSURE TIME EXCEEDS FOUR DAYS.
 - TYPE III BARRICADES MAY BE OMITTED FOR SINGLE-LANE WEAVES UNDER 24-HOURS IN DURATION. W1-6 SIGNS WILL STILL BE REQUIRED. IF THE WIDTH OF OFFSET IS LESS THAN 6' THEN THE TYPE III BARRICADE WITH ATTACHED ARROW SIGN PANEL CAN BE ELIMINATED IN THE TAPER AREAS.
 - WHEN THE LENGTH OF THE SHIFTED SEGMENT (DISTANCE BETWEEN WEAVE POINTS) IS LESS THAN 1500', DOUBLE REVERSE CURVE SIGNS (W24-1) SHOULD BE USED INSTEAD OF THE REVERSE CURVE (W1-4) SIGNS. ARROWS ON THE 4'X8' "ALL TRAFFIC" SIGNS SHALL BE THE SAME SHAPE.
 - THE NUMBER OF ARROWS ON THESE SIGNS SHALL MATCH THE NUMBER OF LANES OPEN TO TRAFFIC.

ALL TRAFFIC 4'x 8' (1.2 m x 2.4 m); 1 (25) BORDER; 10 (250) CAPITAL LETTERS BACKGROUND SHEETING SHALL BE THE SAME AS ALL DIAMOND SHAPED CONSTRUCTION SIGNS.

- SYMBOLS**
- DIRECTION OF TRAFFIC
 - WORK AREA
 - SIGN ON PORTABLE OR PERMANENT SUPPORT
 - TYPE II BARRICADE OR DRUM WITH MONO-DIRECTIONAL STEADY BURNING LIGHT
 - TEMPORARY CONCRETE BARRIER WALL
 - IMPACT ATTENUATOR
 - W24-1-48

ALL DIMENSIONS ARE IN INCHES (MILLIMETERS) UNLESS OTHERWISE SHOWN

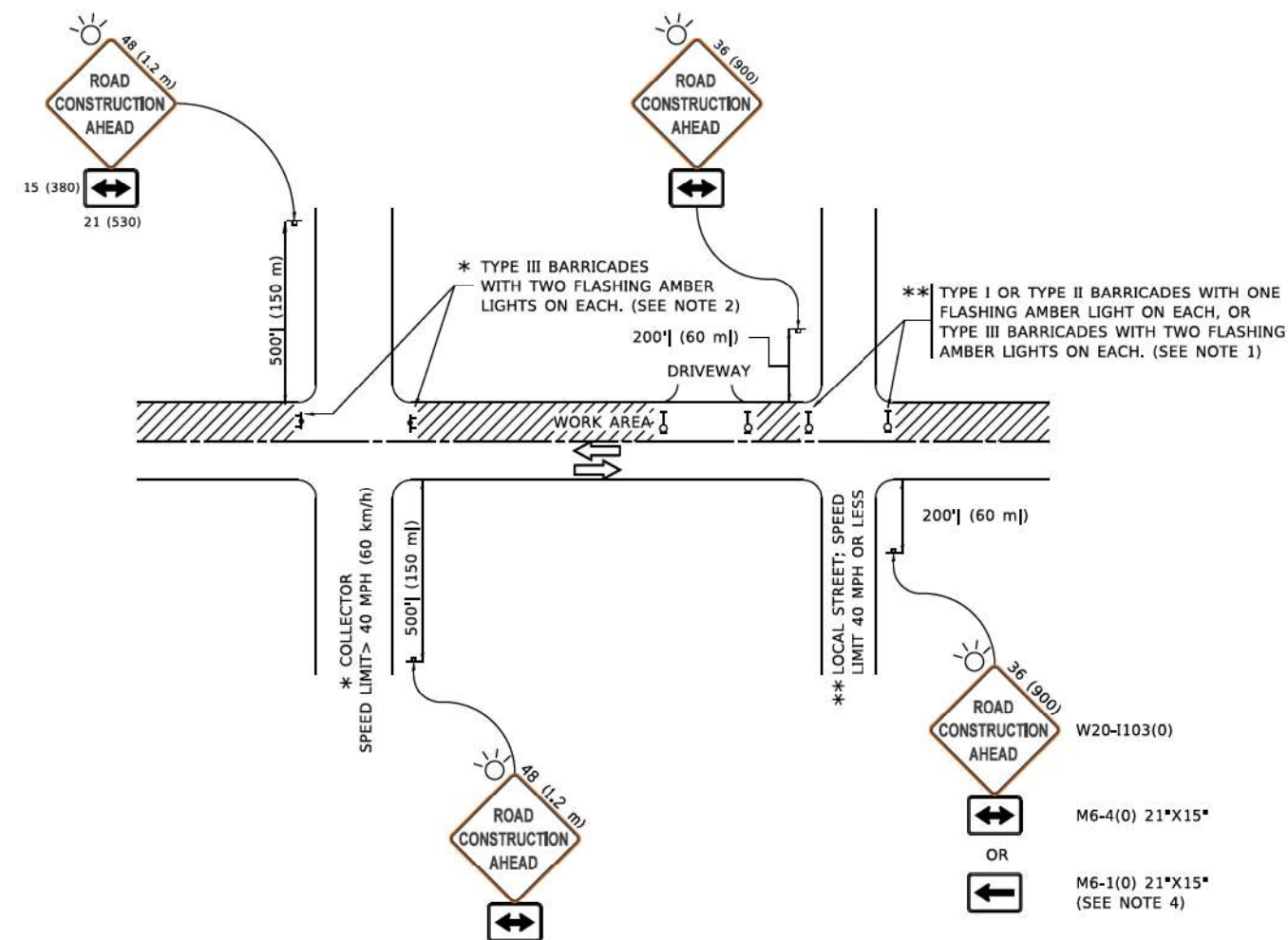
MODEL: D:\in\...
FILE NAME: ...

USER NAME - footer	DESIGNED - D.W.S.	REVISED - J.A.F. 02-06
	DRAWN -	REVISED - S.P.B. 01-07
PLOT SCALE = 50,0000 1/1	CHECKED -	REVISED - S.P.B. 12-09
PLOT DATE = 3/4/2019	DATE - 02-87	REVISED - M.D. 06-13

STATE OF ILLINOIS
DEPARTMENT OF TRANSPORTATION

TRAFFIC CONTROL DETAILS FOR FREEWAY SINGLE & MULTI-LANE WEAVE	
SCALE: NONE	SHEET 2 OF 6 SHEETS STA. TO STA.

F.A. RTE.	SECTION	COUNTY	TOTAL SHEETS	SHEET NO.
	TC-09		220	209
ILLINOIS FED. AID PROJECT			CONTRACT NO. 60X98	



NOTES:

1. SIDE ROAD WITH A SPEED LIMIT OF 40 MPH (60 km/h) OR LESS AS SHOWN ON THE DRAWING AND AS DIRECTED BY THE ENGINEER:
 - a) ONE "ROAD CONSTRUCTION AHEAD" SIGN 36 x 36 (900x900) WITH A FLASHER MOUNTED ON IT APPROXIMATELY 200' (60 m) IN ADVANCE OF THE MAIN ROUTE.
 - b) THE CLOSED PORTION OF THE MAIN ROUTE SHALL BE PROTECTED BY BLOCKING WITH TYPE I, TYPE II OR TYPE III BARRICADES, 1/3 OF THE CROSS SECTION OF THE CLOSED PORTION.
2. SIDE ROAD WITH A SPEED LIMIT GREATER THAN 40 MPH (60 km/h) AS SHOWN ON THE DRAWING AND AS DIRECTED BY THE ENGINEER:
 - a) ONE "ROAD CONSTRUCTION AHEAD" SIGN 48 x 48 (1.2 m x 1.2 m) WITH A FLASHER MOUNTED ON IT APPROXIMATELY 500' (150 m) IN ADVANCE OF THE MAIN ROUTE.
 - b) THE CLOSED PORTION OF THE MAIN ROUTE SHALL BE PROTECTED BY BLOCKING WITH TYPE III BARRICADES, 1/2 OF THE CROSS SECTION OF THE CLOSED PORTION.
3. CONES MAY BE SUBSTITUTED FOR BARRICADES OR DRUMS AT HALF THE SPACING DURING DAY OPERATIONS, CONES SHALL BE A MINIMUM OF 28 (710) IN HEIGHT.
4. SIGNING AND THE WORK ZONE, A SINGLE HEADED ARROW (M6-1) SHALL BE USED IN LIEU OF THE DOUBLE HEADED ARROW (M6-4).
5. WHEN WORK IS BEING PERFORMED ON A SIDE ROAD OR DRIVEWAY, FOLLOW THE APPLICABLE STANDARD(S). THE DIRECTIONAL ARROW (M6-1 OR M6-4) SHALL BE COVERED OR REMOVED WHEN NO LONGER CONSISTENT WITH THE TRAFFIC CONTROL SET-UP.
6. ADVANCE WARNING SIGNS ARE TO BE OMITTED ON DRIVEWAYS UNLESS OTHERWISE SPECIFIED IN THE PLANS OR BY THE ENGINEER.
7. THE TRAFFIC CONTROL AND PROTECTION FOR SIDE ROADS, INTERSECTIONS, AND DRIVEWAYS SHALL BE INCLUDED IN THE COST OF SPECIFIED TRAFFIC CONTROL STANDARDS OR ITEMS.

All dimensions are in inches (millimeters) unless otherwise shown.

MODEL: D:\in\... FILE NAME: ...

USER NAME	DESIGNED	REVISED
footernj	L.H.A.	A. HOUSEH 10-15-96
	DRAWN	REVISED
		T. RAMMACHER 01-06-00
PLOT SCALE	CHECKED	REVISED
1/4" = 50,000'		A. SCHUETZE 07-01-13
PLOT DATE	DATE	REVISED
3/4/2019	06-89	A. SCHUETZE 09-15-16

**STATE OF ILLINOIS
DEPARTMENT OF TRANSPORTATION**

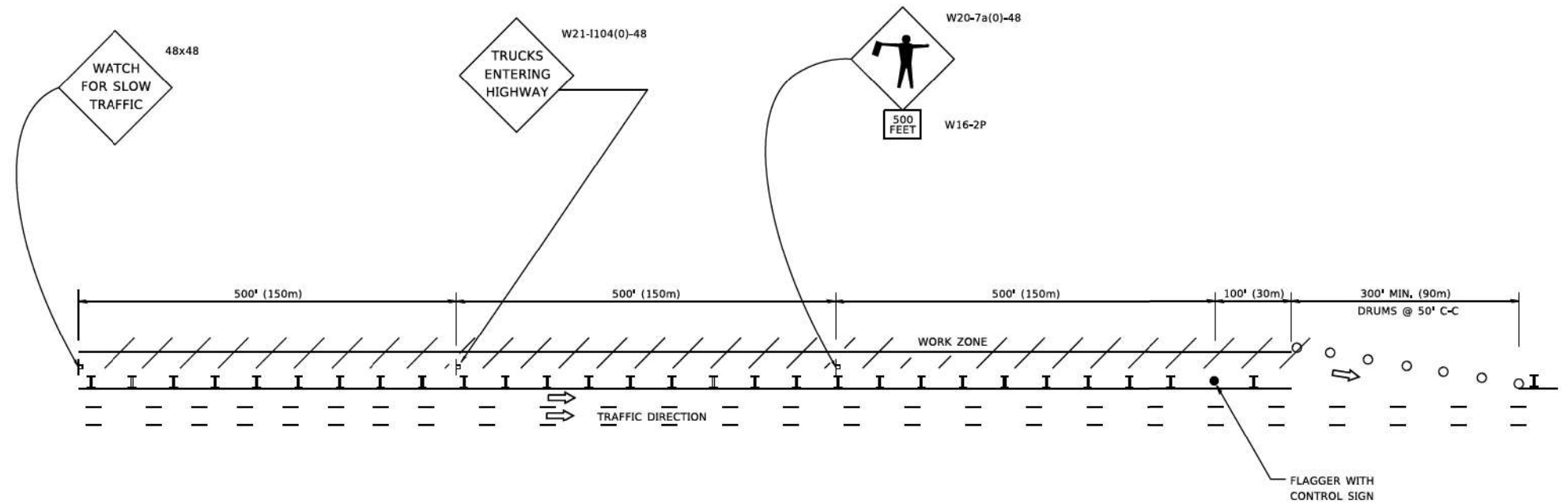
**TRAFFIC CONTROL AND PROTECTION FOR
SIDE ROADS, INTERSECTIONS, AND DRIVEWAYS**

SCALE: NONE SHEET 3 OF 6 SHEETS STA. TO STA.

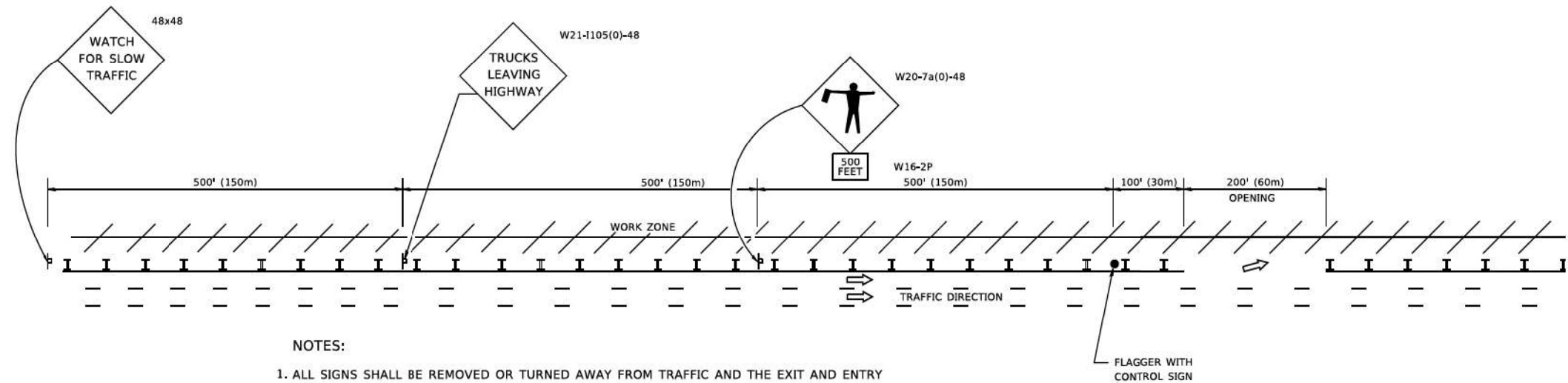
F.A. RTE.	SECTION	COUNTY	TOTAL SHEETS	SHEET NO.
			220	210
TC-10			CONTRACT NO. 60X98	
ILLINOIS FED. AID PROJECT				

SIGNING FOR FLAGGING OPERATIONS AT WORK ZONE OPENINGS

WORK ZONE EXIT OPENING



WORK ZONE ENTRY OPENING



NOTES:

1. ALL SIGNS SHALL BE REMOVED OR TURNED AWAY FROM TRAFFIC AND THE EXIT AND ENTRY OPENINGS SHALL BE CLOSED WHEN THE FLAGGING OPERATION CEASES. NON OPERATING EQUIPMENT SHALL COMPLY WITH ARTICLE 701.11
2. WORK ZONE OPENINGS SHALL BE A MINIMUM OF ONE HALF MILE APART AND A MINIMUM OF ONE QUARTER MILE FROM ALL ENTRANCE AND EXIT RAMP.
3. EXITING THE WORK ZONE AT ANY PLACE OTHER THAN AT A WORK ZONE EXIT OPENING WILL BE PROHIBITED.
4. ALL VEHICLES SHALL ENTER THE WORK ZONE AT ENTRY OPENINGS, USING THEIR TURN SIGNALS TO WARN MOTORISTS
5. FLAGGERS SHALL NOT STOP TRAFFIC OR DIRECT TRAFFIC INTO AN ADJACENT LANE.

ALL DIMENSIONS ARE IN INCHES (MILLIMETERS) UNLESS OTHERWISE SHOWN

MODEL: D:\in\... \PROJECTS\DOT\Documents\DOT_Offices\Traffic\1\Projects\2018\2018-23\CA\2018\CA\2018\2018.dgn

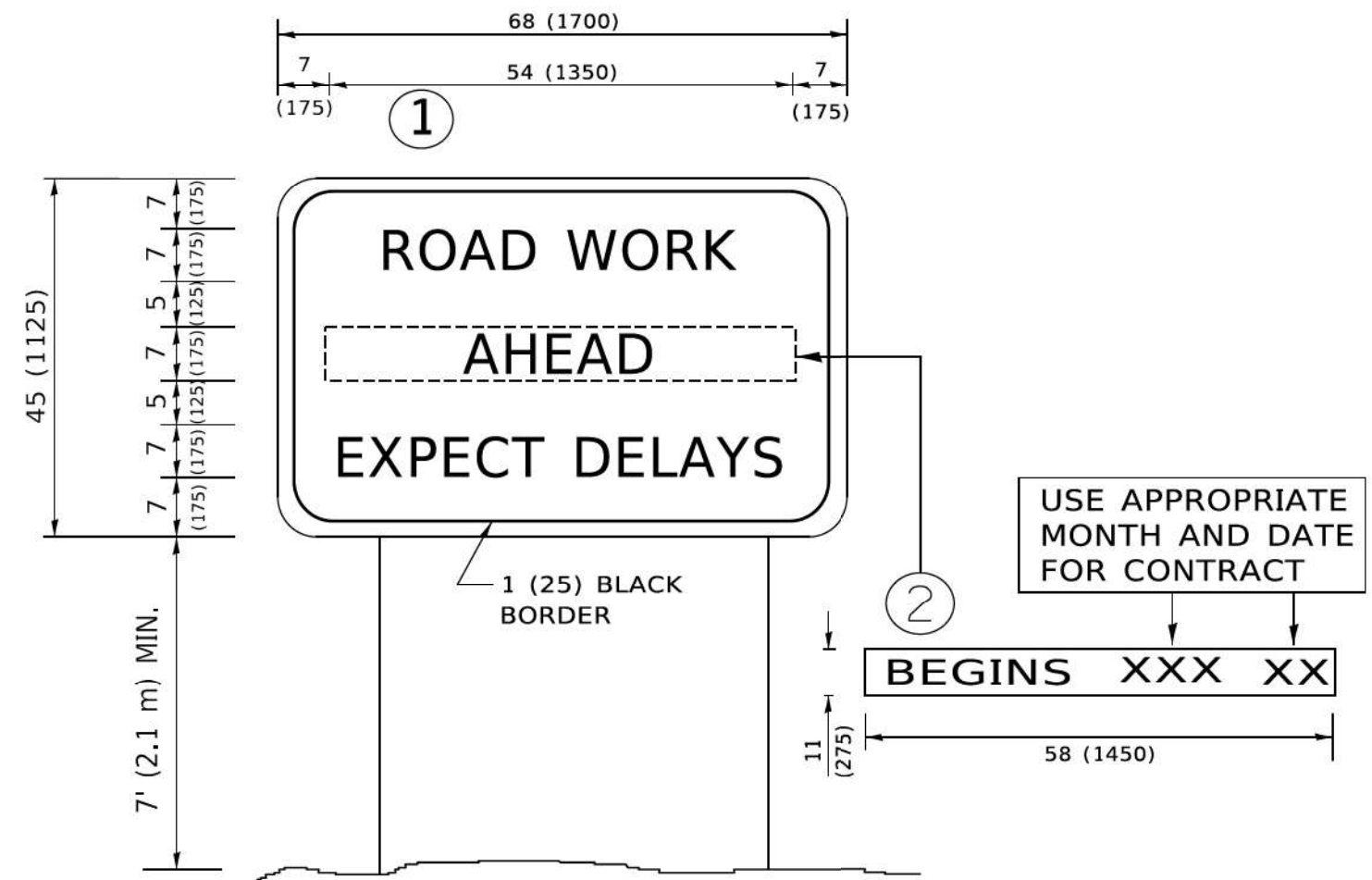
USER NAME	footernj	DESIGNED	-	REVISED	-	J.A.F. 02-06
DRAWN	-	CHECKED	-	REVISED	-	S.P.B. 01-07
PLOT SCALE	= 50,0000 1 / in.	DATE	-	REVISED	-	S.P.B. 12-09
PLOT DATE	= 3/4/2019	DATE	-	REVISED	-	M.D.06-13

**STATE OF ILLINOIS
DEPARTMENT OF TRANSPORTATION**

**FREEWAY /EXPRESSWAY SIGNING FOR FLAGGING OPERATIONS
AT WORK ZONE OPENINGS ON FREEWAYS /EXPRESSWAYS**

SCALE: NONE SHEET 5 OF 6 SHEETS STA. TO STA.

F.A. RTE.	SECTION	COUNTY	TOTAL SHEETS	SHEET NO.
			220	212
TC-18			CONTRACT NO. 60X98	
ILLINOIS FED. AID PROJECT				



NOTES:

1. USE BLACK LETTERING ON ORANGE BACKGROUND.
2. ERECT SIGNS IN ADVANCE OF THE LOCATION FOR THE "ROAD CONSTRUCTION AHEAD" SIGN AT LOCATIONS AS DIRECTED BY THE ENGINEER.
3. ERECT SIGN ① WITH INSTALLED PANEL ② ONE WEEK PRIOR TO THE START OF CONSTRUCTION.
4. REMOVE PANEL ② SOON AFTER THE START OF CONSTRUCTION.
5. SEE SPECIAL PROVISION FOR "TEMPORARY INFORMATION SIGNING" FOR ADDITIONAL INFORMATION.
6. ONE SIGN ASSEMBLY EQUALS 25.70 SQ. FT. (2.3 SQ. M.)
7. SHALL BE PAID FOR AS TEMPORARY INFORMATION SIGNING.

ALL DIMENSIONS ARE IN INCHES (MILLIMETERS) UNLESS OTHERWISE SHOWN.

MODEL: D:\in\...
 FILE NAME: ...
 PROJECT: ...

USER NAME	DESIGNED -	REVISED -
footern	R. MIRS 09-15-97	R. MIRS 12-11-97
DRAWN -	CHECKED -	REVISED -
	T. RAMMACHER 02-02-99	
PLOT SCALE = 50,0000 1/16"	DATE -	REVISED -
		C. JUCIUS 01-31-07
PLOT DATE = 3/4/2019		

**STATE OF ILLINOIS
DEPARTMENT OF TRANSPORTATION**

**ARTERIAL ROAD
INFORMATION SIGN**

SCALE: NONE SHEET 6 OF 6 SHEETS STA. TO STA.

F.A. RTE.	SECTION	COUNTY	TOTAL SHEETS	SHEET NO.
			220	213
TC-22			CONTRACT NO. 60X98	
ILLINOIS FED. AID PROJECT				

FILE PATH = p:\vaecom-na-pubentleu.com\ECOM_D502_NA\Documents\01_Americas\Transportation\60265938_Circles\Phase_1\000_CAD\005-Roadway\Sheets\60X98_Contract\DI60X98-SHT-DI-Details.dgn

SHEET LEFT INTENTIONALLY BLANK



DI60X98-SHT-DI-Details.dgn	DESIGNED -	REVISED -
USER NAME = dwhojper	DRAWN -	REVISED -
PLOT SCALE = 100.0000' / in.	CHECKED -	REVISED -
PLOT DATE = 3/21/2022	DATE - 3/18/2022	REVISED -

**STATE OF ILLINOIS
DEPARTMENT OF TRANSPORTATION**

SCALE: SHEET OF SHEETS STA. TO STA.

F.A.I. RTE.	SECTION	COUNTY	TOTAL SHEETS	SHEET NO.
90/94/290	2014-012LS	COOK	220	214
CONTRACT NO. 60X98				
ILLINOIS FED. AID PROJECT				

FILE PATH = p:\vaecom-na-pubentleu.com\ECOM_D502_NA\Documents\01_Americas\Transportation\60265938_Circles\Phase_1\000_CAD\005-Roadway\Sheets\60X98_Contract\DI60X98-SHT-DI-Details.dgn

SHEET LEFT INTENTIONALLY BLANK



DI60X98-SHT-DI-Details.dgn	DESIGNED -	REVISED -
USER NAME = dwhojper	DRAWN -	REVISED -
PLOT SCALE = 100.0000' / in.	CHECKED -	REVISED -
PLOT DATE = 3/21/2022	DATE - 3/18/2022	REVISED -

**STATE OF ILLINOIS
DEPARTMENT OF TRANSPORTATION**

SCALE: SHEET OF SHEETS STA. TO STA.

F.A.I. RTE.	SECTION	COUNTY	TOTAL SHEETS	SHEET NO.
90/94/290	2014-012LS	COOK	220	215
CONTRACT NO. 60X98				
ILLINOIS FED. AID PROJECT				

FILE PATH = p:\aecom\na-pub\entleu\comp\ECOM_D502_NA\Documents\01_Americas\Transportation\60265938_Circles\Phase_1\000_CAD\005_Roadway\Sheets\60X98_Contract\DI60X98-SHT-DI-Details.dgn

SHEET LEFT INTENTIONALLY BLANK



DI60X98-SHT-DI-Details.dgn
USER NAME = dwhojper
PLOT SCALE = 100.0000' / in.
PLOT DATE = 3/21/2022

DESIGNED -	REVISED -
DRAWN -	REVISED -
CHECKED -	REVISED -
DATE - 3/18/2022	REVISED -

DESIGNED -	REVISED -
DRAWN -	REVISED -
CHECKED -	REVISED -
DATE - 3/18/2022	REVISED -

**STATE OF ILLINOIS
DEPARTMENT OF TRANSPORTATION**

SCALE: SHEET OF SHEETS STA. TO STA.

F.A.I. RTE.	SECTION	COUNTY	TOTAL SHEETS	SHEET NO.
90/94/290	2014-012LS	COOK	220	216
CONTRACT NO. 60X98				
ILLINOIS FED. AID PROJECT				

FILE PATH = p:\vaecom-na-pubentleu.com\ECOM_D502_NA\Documents\01_Americas\Transportation\60265938_Circles\Phase_1\000_CAD\005-Roadway\Sheets\60X98_Contract\DI60X98-SHT-DI-Details.dgn

SHEET LEFT INTENTIONALLY BLANK

	DI60X98-SHT-DI-Details.dgn	DESIGNED -	REVISED -	STATE OF ILLINOIS DEPARTMENT OF TRANSPORTATION			F.A.I. RTE.	SECTION	COUNTY	TOTAL SHEETS	SHEET NO.
	USER NAME = dwhojper	DRAWN -	REVISED -		90/94/290	2014-012LS	COOK	220	217		
	PLOT SCALE = 100.0000' / in.	CHECKED -	REVISED -		CONTRACT NO. 60X98						
	PLOT DATE = 3/21/2022	DATE - 3/18/2022	REVISED -		SCALE:	SHEET	OF	SHEETS	STA.	TO STA.	ILLINOIS FED. AID PROJECT

FILE PATH = p:\vaecom-na-pubentleu.com\ECOM_D502_NA\Documents\01_Americas\Transportation\60265938_Circles\Phase_1\000_CAD\005-Roadway\Sheets\60X98_Contract\DI60X98-SHT-DI-Details.dgn

SHEET LEFT INTENTIONALLY BLANK



DI60X98-SHT-DI-Details.dgn
USER NAME = dwhojper
PLOT SCALE = 100.0000' / in.
PLOT DATE = 3/21/2022

DESIGNED -	REVISED -
DRAWN -	REVISED -
CHECKED -	REVISED -
DATE - 3/18/2022	REVISED -

DESIGNED -	REVISED -
DRAWN -	REVISED -
CHECKED -	REVISED -
DATE - 3/18/2022	REVISED -

**STATE OF ILLINOIS
DEPARTMENT OF TRANSPORTATION**

SCALE: SHEET OF SHEETS STA. TO STA.

F.A.I. RTE.	SECTION	COUNTY	TOTAL SHEETS	SHEET NO.
90/94/290	2014-012LS	COOK	220	218
CONTRACT NO. 60X98				
ILLINOIS FED. AID PROJECT				

FILE PATH = p:\vaecom-na-pubentleu.com\ECOM_D502_NA\Documents\01_Americas\Transportation\60265938_Circles\Phase_1\000_CAD\005-Roadway\Sheets\60X98_Contract\DI60X98-SHT-DI-Details.dgn

SHEET LEFT INTENTIONALLY BLANK



DI60X98-SHT-DI-Details.dgn
USER NAME = dwhojper
PLOT SCALE = 100.0000' / in.
PLOT DATE = 3/21/2022

DESIGNED -	REVIS
DRAWN -	REVIS
CHECKED -	REVIS
DATE - 3/18/2022	REVIS

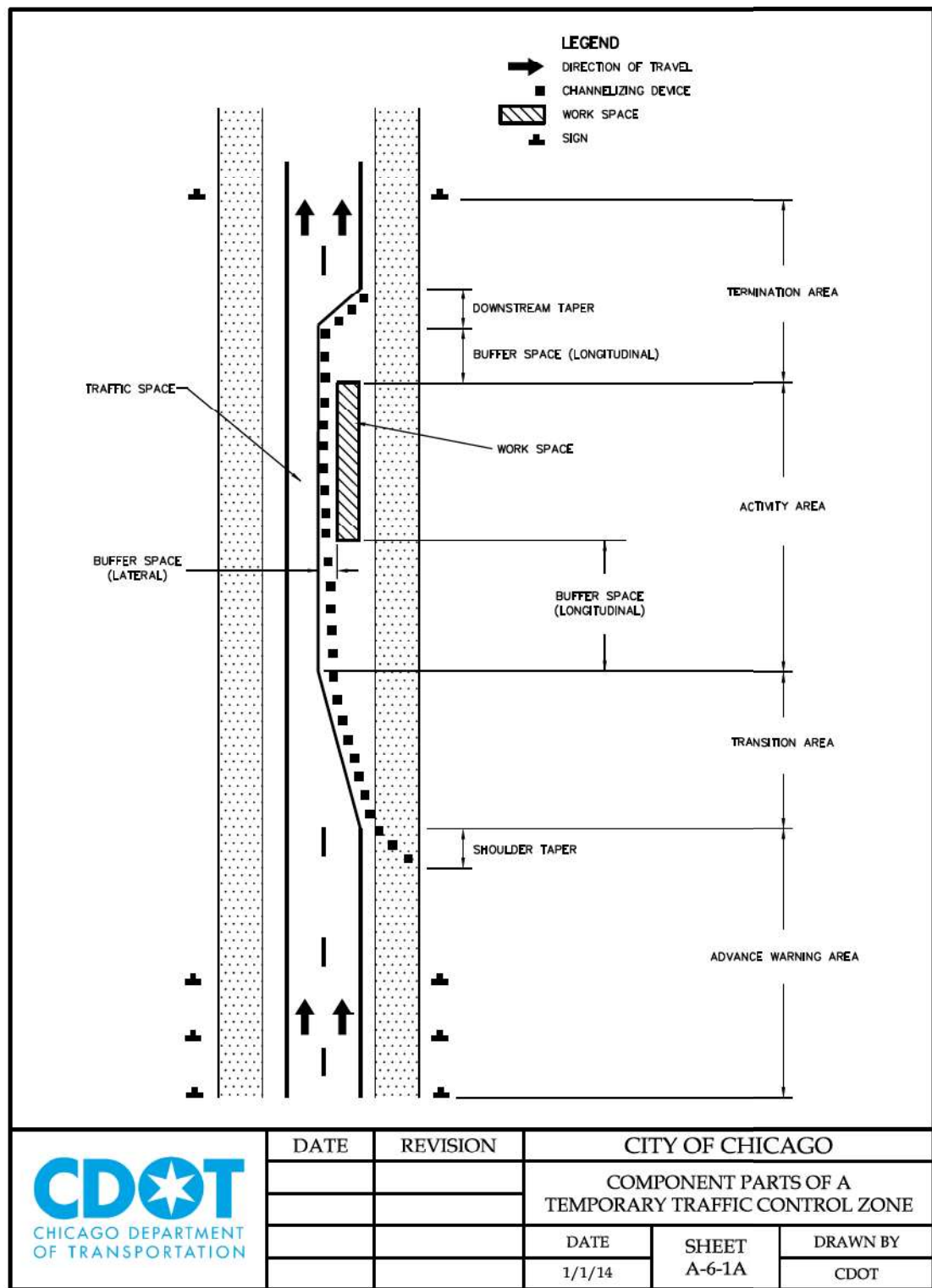
REVIS	REVIS
REVIS	REVIS
REVIS	REVIS
REVIS	REVIS

**STATE OF ILLINOIS
DEPARTMENT OF TRANSPORTATION**

SCALE: SHEET OF SHEETS STA. TO STA.

F.A.I. RTE.	SECTION	COUNTY	TOTAL SHEETS	SHEET NO.
90/94/290	2014-012LS	COOK	220	219
CONTRACT NO. 60X98				
ILLINOIS FED. AID PROJECT				

FILE PATH = p:\vaecom-na-pubent\leucom\CDOT_D502_NA\Documents\01_Americas\Transportation\60265938_Circle\Phase_1\000_CAD\005-Roadway\Sheets\60265938-SHT-CDOT-Details.dgn



DATE	REVISION	CITY OF CHICAGO		
		COMPONENT PARTS OF A TEMPORARY TRAFFIC CONTROL ZONE		
		DATE	SHEET	DRAWN BY
		1/1/14	A-6-1A	CDOT



DI60X98-SHT-CDOT-Details.dgn	DESIGNED - CDOT	REVISED -
USER NAME = dwhojyer	DRAWN - CDOT	REVISED -
PLOT SCALE = 107.9468' / in.	CHECKED - CDOT	REVISED -
PLOT DATE = 3/21/2022	DATE - 3/18/2022	REVISED -

**STATE OF ILLINOIS
DEPARTMENT OF TRANSPORTATION**

**CHICAGO DEPARTMENT OF TRANSPORTATION
STANDARDS**

SCALE: NONE SHEET 1 OF 1 SHEETS STA. TO STA.

F.A.I. RTE.	SECTION	COUNTY	TOTAL SHEETS	SHEET NO.
90/94/290	2015-019R	COOK	220	220
CONTRACT NO. 62A76				
ILLINOIS FED. AID PROJECT				