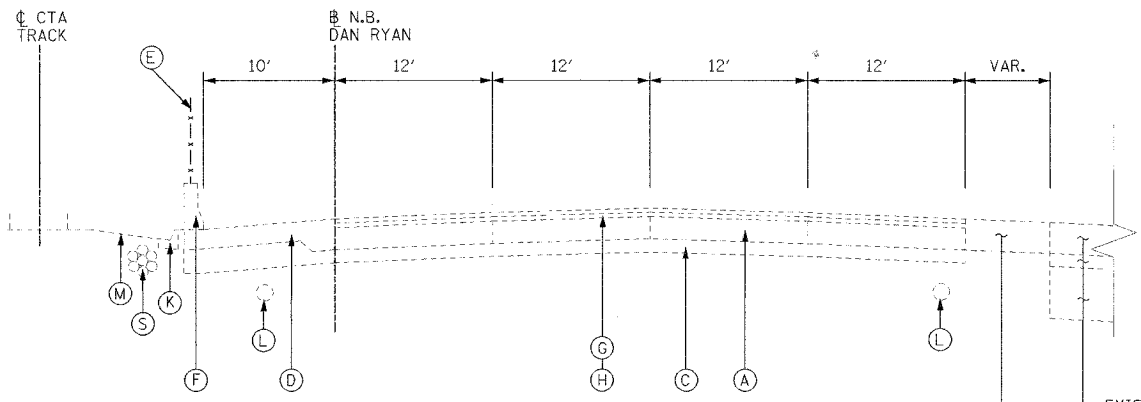
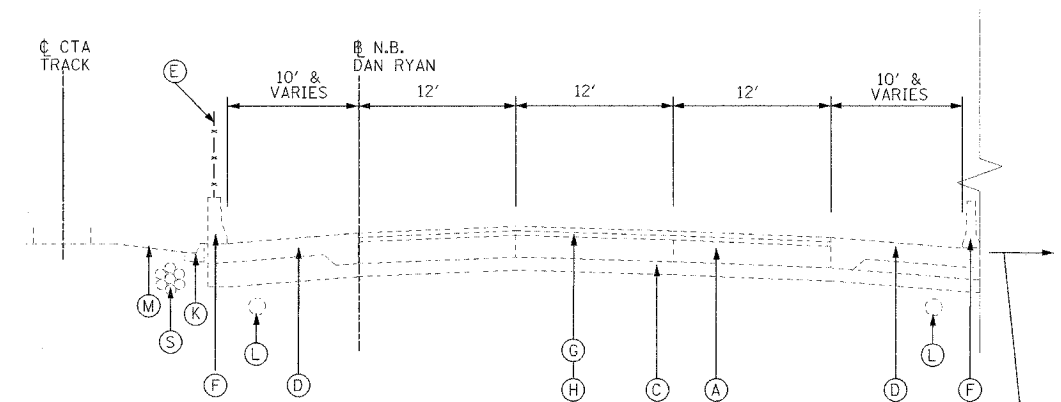


F.A.I. RTE.	SECTION	COUNTY	TOTAL SHEETS	SHEET NO.
94/90		COOK	556	12
STA.	TO STA.			
FED. ROAD DIST. NO.	ILLINOIS	FED. AID PROJECT		
62300	• (1818, ETC. 2324.6-1)PR-8			



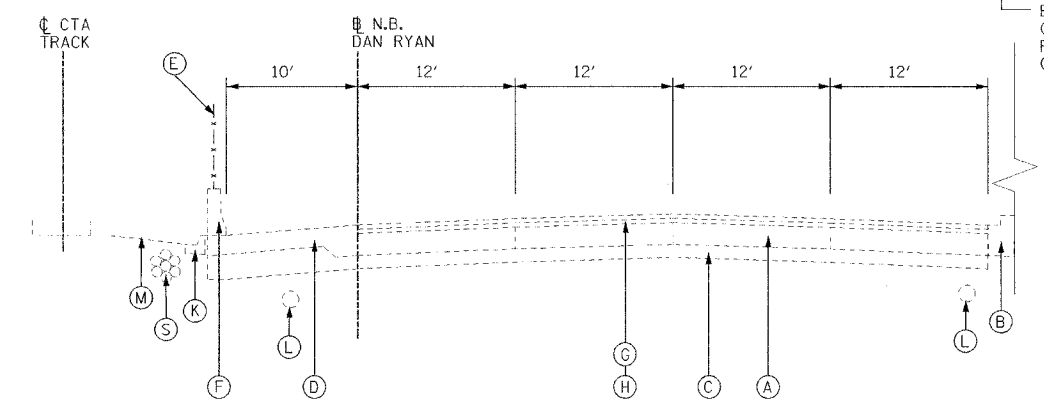
NORTHBOUND DAN RYAN
STA. 2367+00 TO STA. 2385+00

EXISTING PAVEMENT OR SHOULDER PLACED IN PREVIOUS CONTRACT 62590 TO REMAIN
EXISTING 14" BITUMINOUS OR 12" P.C.C. PAVEMENT PLACED IN PREVIOUS CONTRACT 62590 TO BE REMOVED

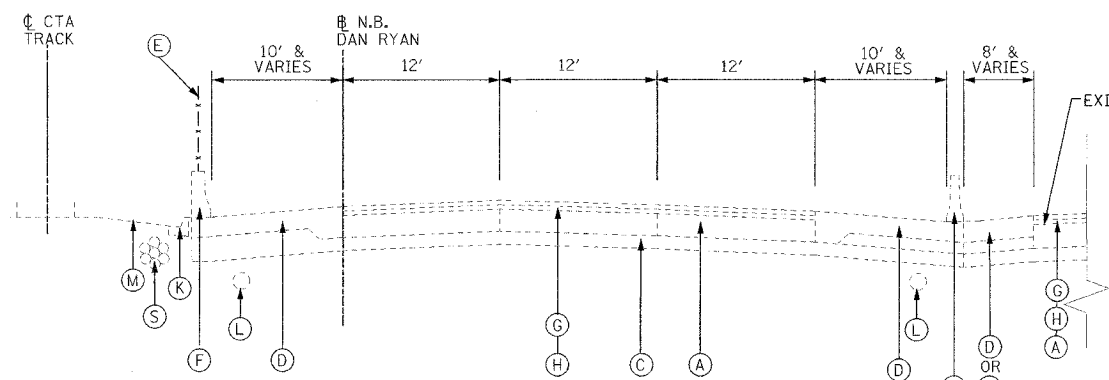


NORTHBOUND DAN RYAN
STA. 2407+00 TO STA. 2417+30

EXISTING LOCAL LANES (CONTRACT 62589 CONSTRUCTION)

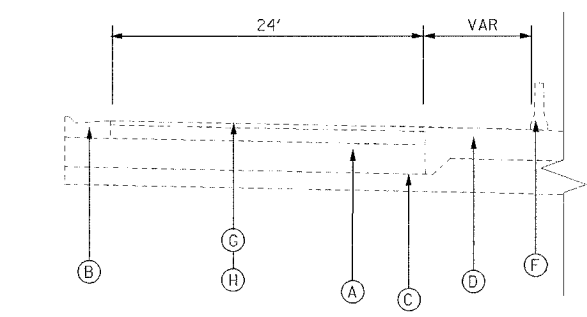


NORTHBOUND DAN RYAN
STA. 2392+00 TO STA. 2401+00

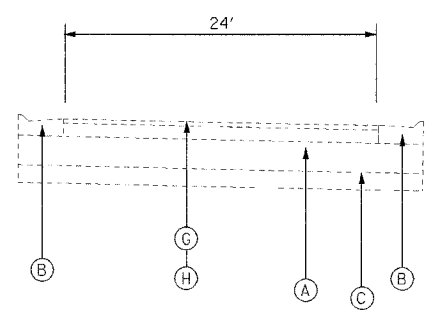


NORTHBOUND DAN RYAN
STA. 2417+30 TO STA. 2421+31

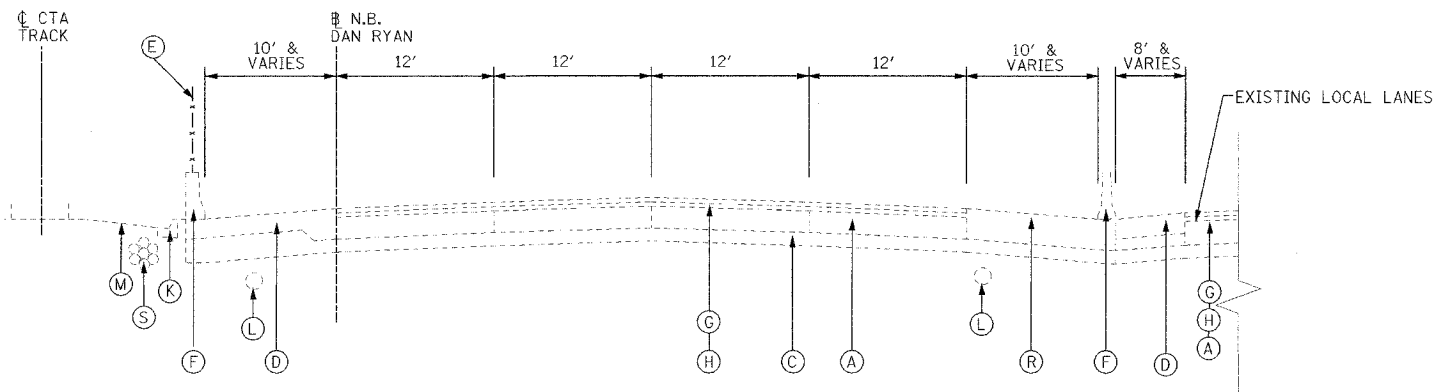
STA. 2417+30-2421+31
STA. 2417+30-2441+32
OR
STA. 2443+80-2445+00
OR
STA. 2417+30-2421+31



NORTHBOUND SLIP RAMP @ STA 2445+00



NORTHBOUND SLIP RAMP @ STA 2513+00



NORTHBOUND DAN RYAN
STA. 2451+00 TO STA. 2505+00

EXISTING CONDITIONS LEGEND

- (A) P.C.C. PAVEMENT 10" OR C.R.C. PAVEMENT 8" (SEE NOTE 1)
- (B) COMBINATION CONCRETE CURB AND GUTTER
- (C) GRANULAR SUB-BASE 6"
- (D) P.C.C. SHOULDER 9"
- (E) CHAIN LINK FENCE
- (F) CONCRETE BARRIER
- (G) BITUMINOUS CONCRETE SURFACE COURSE, 1 1/2"
- (H) BITUMINOUS CONCRETE BINDER COURSE, 4 3/4"
- (I) TEMPORARY CONCRETE BARRIER
- (J) C.R.C. PAVEMENT 8"
- (K) TYPE 34 CURB AND GUTTER
- (L) PIPE UNDERDRAINS 8"
- (M) C.T.A. BALLAST
- (N) BITUMINOUS CONCRETE SURFACE COURSE 1 3/4"
- (O) BITUMINOUS CONCRETE SURFACE COURSE 2 1/4"
- (P) BITUMINOUS CONCRETE SURFACE COURSE 3 1/2"
- (Q) 4" STABILIZED SHOULDER B.A.M.
- (R) BITUMINOUS CONCRETE SURFACE COURSE 1 3/4"; BITUMINOUS CONCRETE BASE COURSE 1 1/4"
- (S) C.T.A. FIBER OPTIC DUCT

NOTE:

- P.C.C. PAVEMENT 10" STA. 2367+00 TO 2423+00
C.R.C. PAVEMENT 8" STA. 2423+00 TO STA. 2530+00
- THICKNESS OF EXISTING PAVEMENT AND SUB BASES ARE TAKEN FROM AS-BUILT PLANS.
- REMOVAL OF TYPE 34 COMBINATION CONCRETE CURB AND GUTTER SHALL BE PERFORMED AS REQUIRED. THIS REMOVAL WILL BE INCLUDED IN THE COST OF CTA BARRIER REMOVAL AND WILL NOT BE PAID FOR SEPARATELY.

REVISIONS	
NAME	DATE
ADDENDUM 1	8/12/05

ILLINOIS DEPARTMENT OF TRANSPORTATION
F.A.I. 94/90 (DAN RYAN EXPRESSWAY)
31ST STREET TO 71ST STREET
NB EXPRESS LANE RECONSTRUCTION
EXISTING TYPICAL SECTIONS
NORTHBOUND DAN RYAN

SCALE: NONE
DATE: 7/7/05
DRAWN BY: TAI
CHECKED BY: PJM



P:\030093\35\ACON 14&15\CADD\PLAN\840012L.SW 05/07/2005 05:07:26 PM