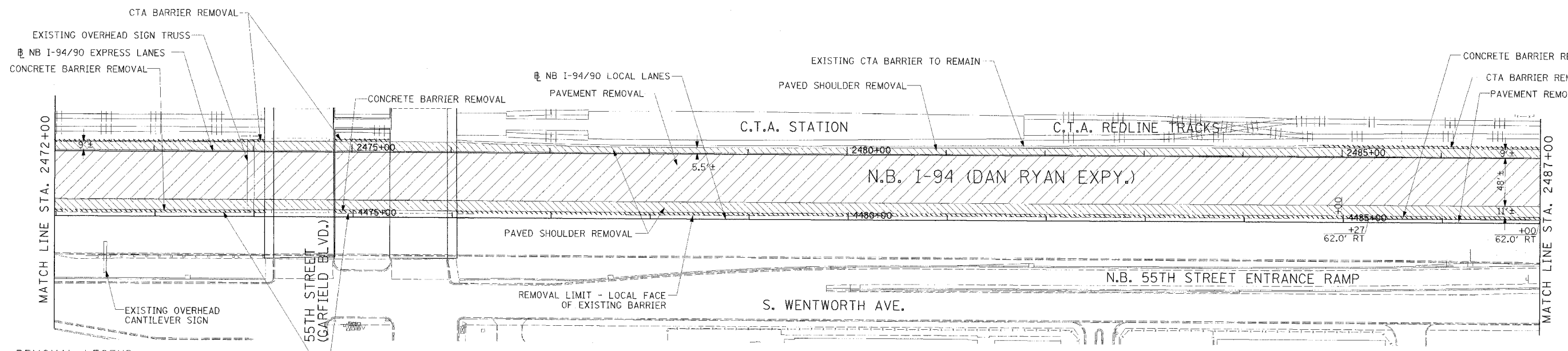


F.A.I. RTE.	SECTION	COUNTY	TOTAL SHEETS	SHEET NO.
94/90		COOK	556	53
STA.	TO STA.			
FED. ROAD DIST. NO.	ILLINOIS FED. AID PROJECT			
62300	• (1818, ETC, 2324.6-1)R-8			

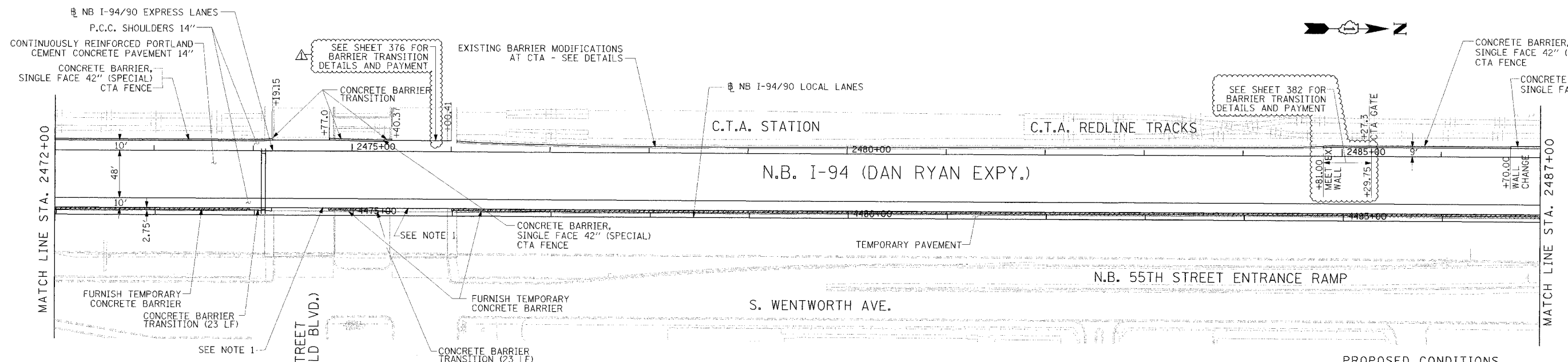


REMOVAL LEGEND

	PAVEMENT REMOVAL
	PAVED SHOULDER REMOVAL
	COMBINATION CURB AND GUTTER REMOVAL
	BARRIER WALL AND GUARD RAIL REMOVAL

NOTE:
1. THE LOCATION OF PAVEMENT CONSTRUCTED IN PREVIOUS CONTRACTS IS BASED OFF OF CONTRACT PLAN DRAWINGS. THE CONTRACTOR MUST VERIFY LIMITS OF PREVIOUS CONSTRUCTION IN THE FIELD.

EXISTING CONDITIONS & REMOVALS



Edwards and Kelcey
ONE NORTH FRANKLIN
CHICAGO, IL 60606
PHONE: (312) 251-3000
FAX: (312) 251-3015
WEB: WWW.EKCORP.COM

NOTE:
1. BRIDGE OVER EXPRESS LANES OMITTED FOR CLARITY.

LEGEND

	TEMPORARY PAVEMENT (INTERSTATE)/TEMPORARY SHOULDER
	TEMPORARY CONCRETE BARRIER

STATIONING
+###.## STATION PROVIDED FROM THE I-90/94 EXPRESS LANES
(+###.##) STATION PROVIDED FROM THE I-90/94 LOCAL LANES
[+###.##] STATION PROVIDED FROM THE SLIP RAMP

REVISIONS

NAME	DATE
ADDENDUM 1	8/12/05

ILLINOIS DEPARTMENT OF TRANSPORTATION
F.A.I. 94/90 (DAN RYAN EXPRESSWAY)
31ST STREET TO 71ST STREET
NB EXPRESS LANE RECONSTRUCTION
EXISTING AND PROPOSED PLAN
NORTHBOUND STA. 2472+00 TO STA. 2487+00

SCALE: 1"=50'
DATE: 7/7/05

DRAWN BY: TAI
CHECKED BY: PJM

RDY-8
08/09/2005 09:25:00 PM