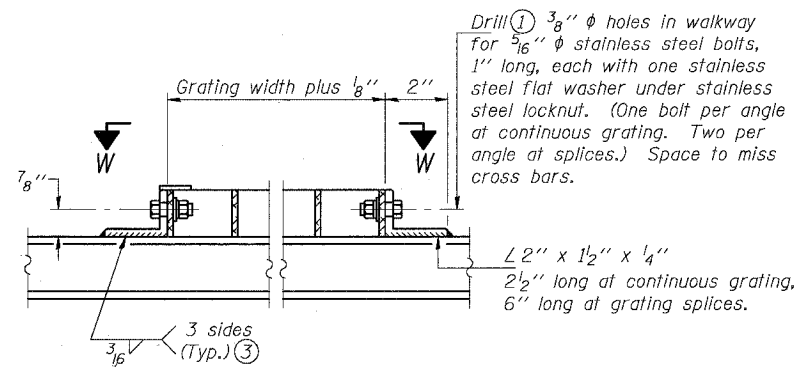
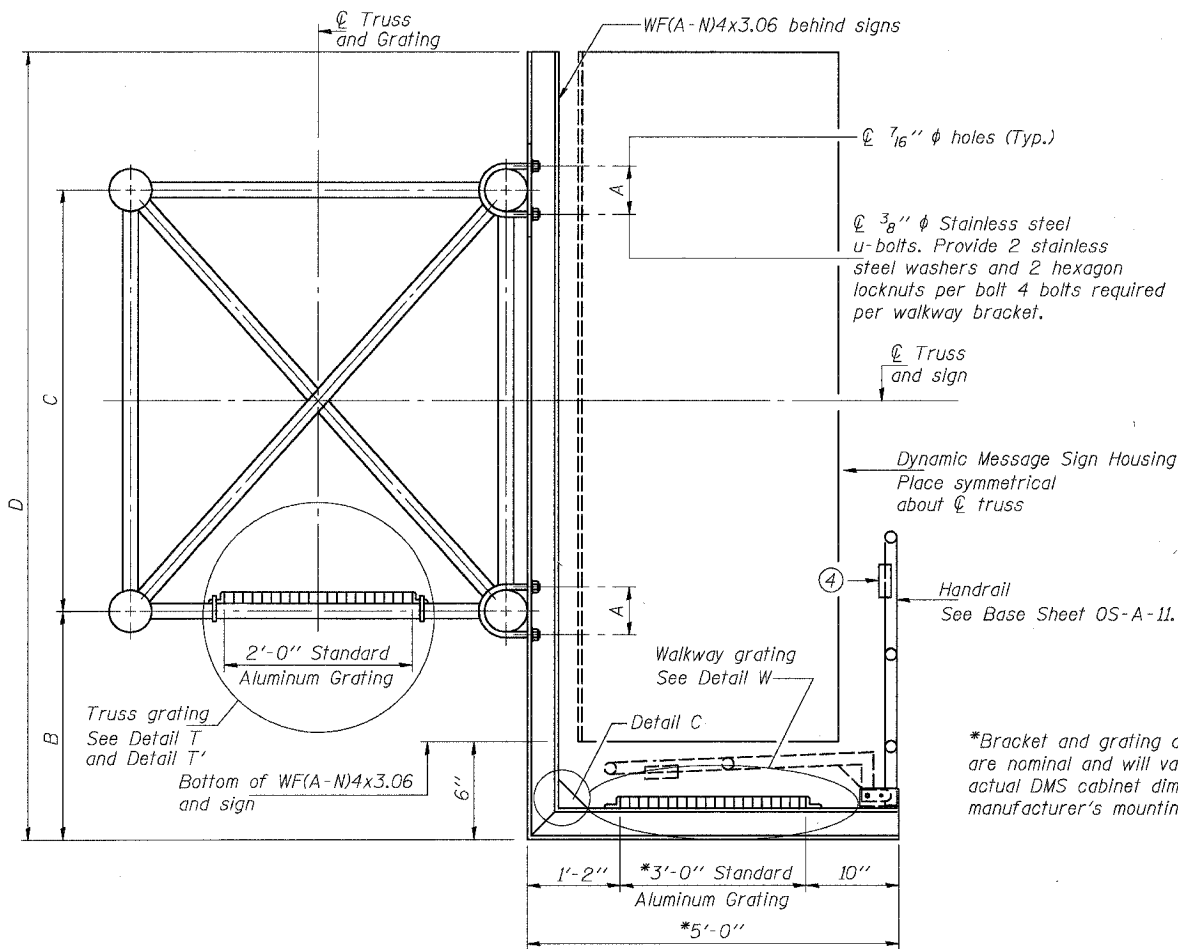
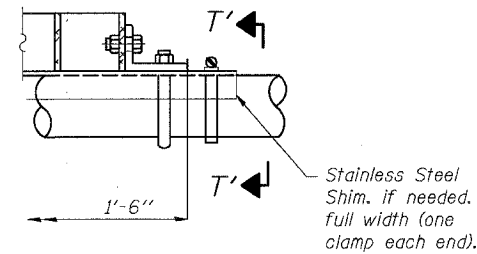


STATE OF ILLINOIS  
DEPARTMENT OF TRANSPORTATION

|           |         |        |              |           |
|-----------|---------|--------|--------------|-----------|
| ROUTE NO. | SECTION | COUNTY | TOTAL SHEETS | SHEET NO. |
| F.A.      |         |        | 556          | 295       |

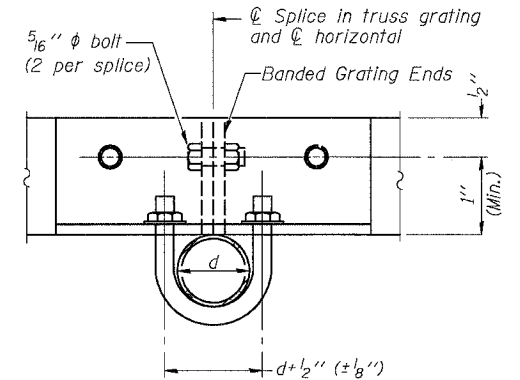


**DETAIL W**  
(Walkway grating)

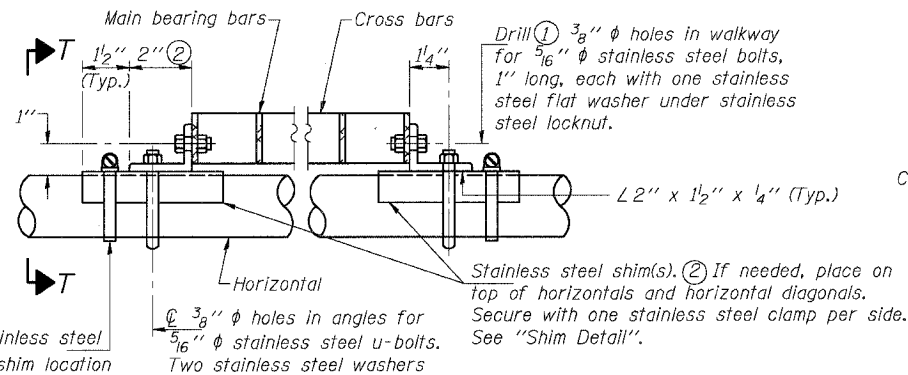


**DETAIL T'**

(Truss grating splice)  
Details not shown same as Detail T.  
Alternate materials may be used subject to the Engineer's review and approval.

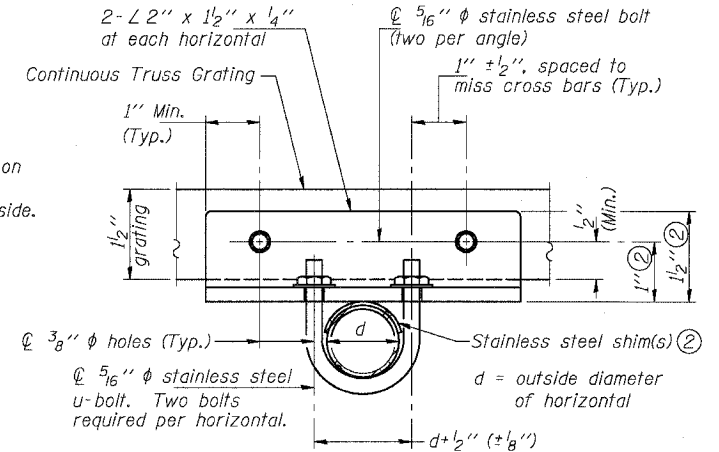


**SECTION T'-T'**



**DETAIL T**

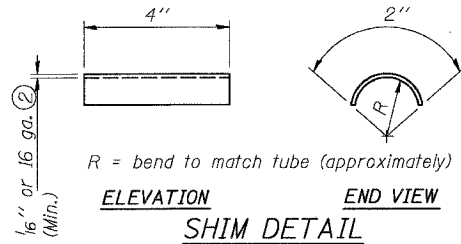
(Continuous Truss grating)



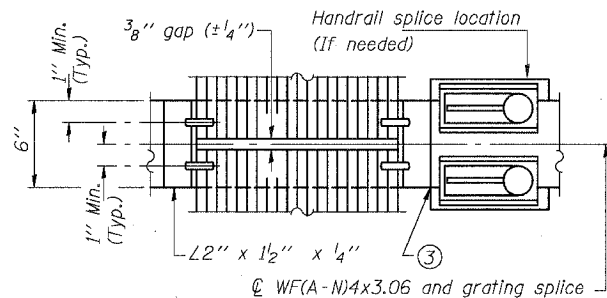
**SECTION T-T**

\*Bracket and grating dimensions are nominal and will vary based on actual DMS cabinet dimensions plus manufacturer's mounting devices.

Screw type stainless steel tube clamp at shim location

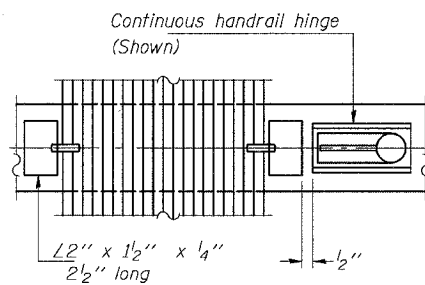


**SHIM DETAIL**



**SECTION B-B**

**(AT WALKWAY GRATING SPLICE)**



**SECTION W-W**

**(CONTINUOUS WALKWAY GRATING)**

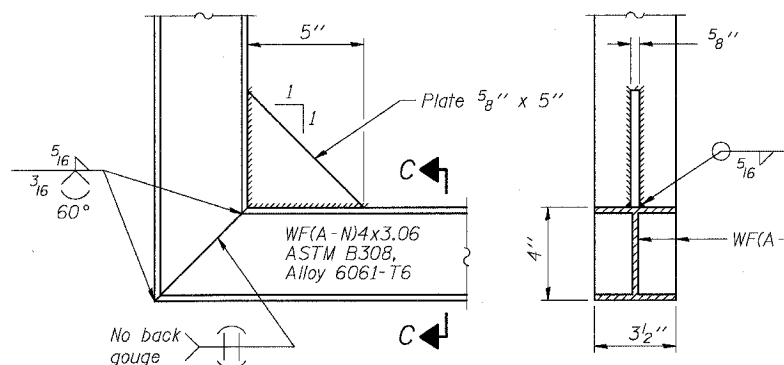
**SPECIFICATIONS FOR STANDARD ALUMINUM GRATING**

Main Bearing Bars shall be 3/16" x 1 1/2" on 1 3/16" centers and conform to ASTM B221 Alloy 6061-T6.  
Cross bars shall be 3/16" x 1 1/2" on 4" centers and conform to ASTM B221 Alloy 6063-T5 or 6061-T6.

OR

Aluminum Grating with modified "T" sections for main bearing bars shall meet the following requirements:  
Main bars shall conform to ASTM B221 Alloy 6061-T6 and have a minimum section modulus equal to 0.0705 in.<sup>3</sup> per bar, a depth of 1 1/2", spaced on 1 3/16" centers.  
Cross bars shall conform to ASTM B221 Alloy 6063-T5 or T-42 and spaced on 4" centers.

- Drilling holes in grating may be done in shop or field, based on Contractor's preference and subject to accurate alignment.
- Stainless steel shims shall be placed as shown in Detail T if needed to compensate for alignment variations between horizontal and diagonal pipes beyond adjustment provided by angles. Thicker shims may be used subject to shims performing properly.
- If Handrail Joint present, weld angle to WF(A-N)4 and 1/4" extension bars. (See Base Sheet OS-A-11.)
- 1/8" x 1/2" x 2" welded to handrail posts to protect locations that contact grating.



**DETAIL C**

(See Detail P, Base Sheet OS-A-11.)

**SECTION C-C**

|          |          |
|----------|----------|
| DESIGNED | 19       |
| CHECKED  | EXAMINED |
| DRAWN    | PASSED   |
| CHECKED  |          |

| NUMBER | REVISION | DATE |
|--------|----------|------|
|        |          |      |
|        |          |      |
|        |          |      |
|        |          |      |

| Structure Number | Station | A      | B     | C    | D     |
|------------------|---------|--------|-------|------|-------|
| IS016T094L055.41 | 4598+65 | 7 1/2' | 1.25' | 7.0' | 9.00' |
|                  |         |        |       |      |       |
|                  |         |        |       |      |       |
|                  |         |        |       |      |       |
|                  |         |        |       |      |       |

OVERHEAD SIGN STRUCTURES  
ALUMINUM WALKWAY DETAILS  
ILLINOIS DEPARTMENT OF TRANSPORTATION  
F.A.I. 94/90 (DAN RYAN EXPRESSWAY)  
31ST STREET TO 71ST STREET  
NB EXPRESS LANE RECONSTRUCTION