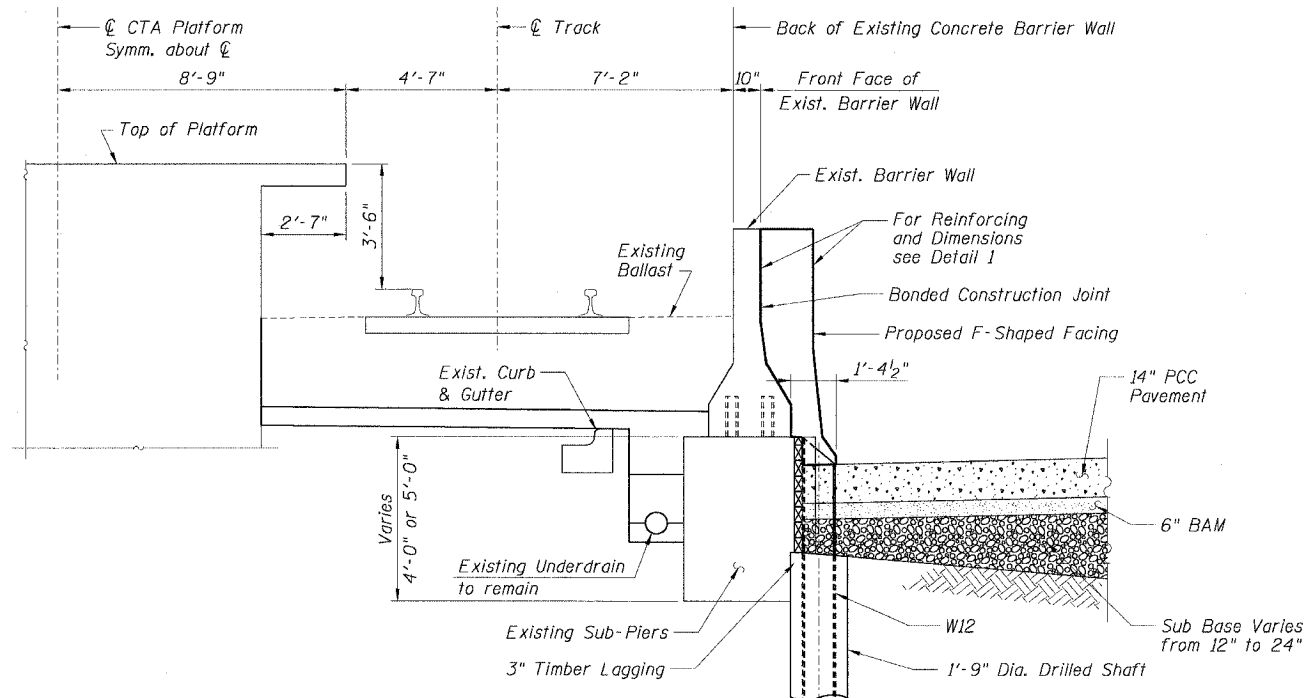
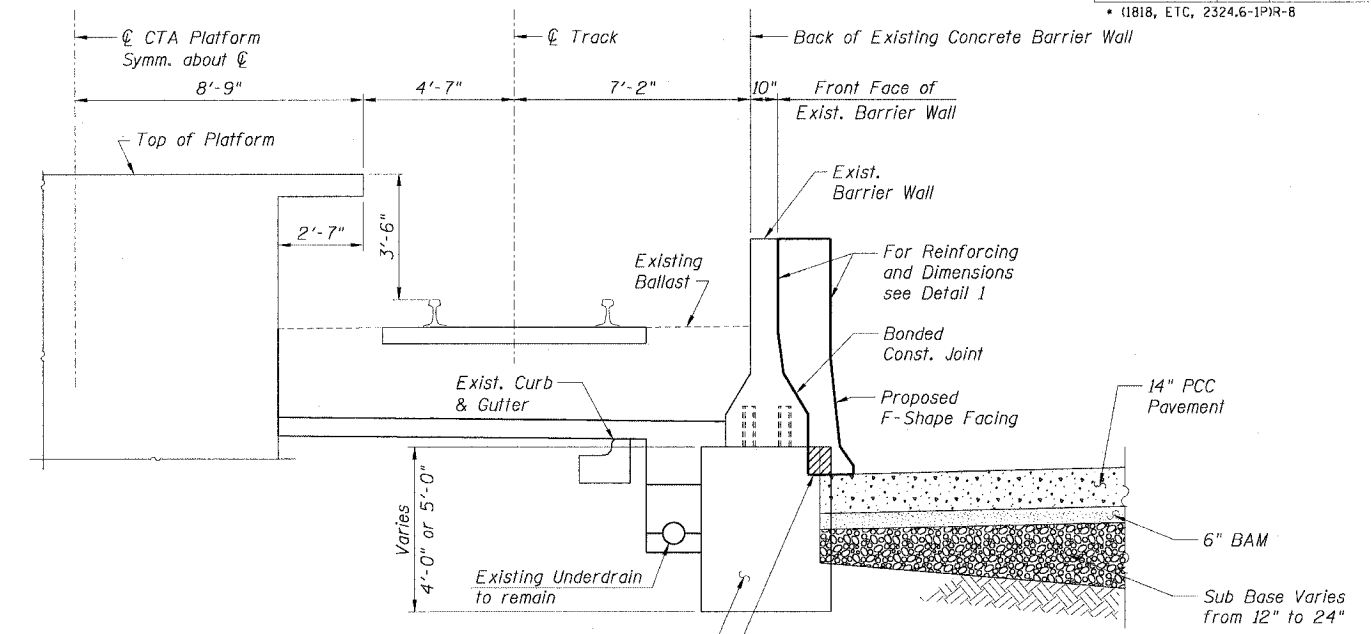


STATE OF ILLINOIS
DEPARTMENT OF TRANSPORTATION

F.A.I. RTE.	SECTION	COUNTY	TOTAL SHEET NO.
90/94		COOK	556 370
STA.	TO STA.		
FED. ROAD DIST. NO. 1 ILLINOIS FED. AID PROJECT			62300
* (1818, ETC, 2324.6-1PR-8			



TYPICAL SECTION
BETWEEN SUB-PIERS

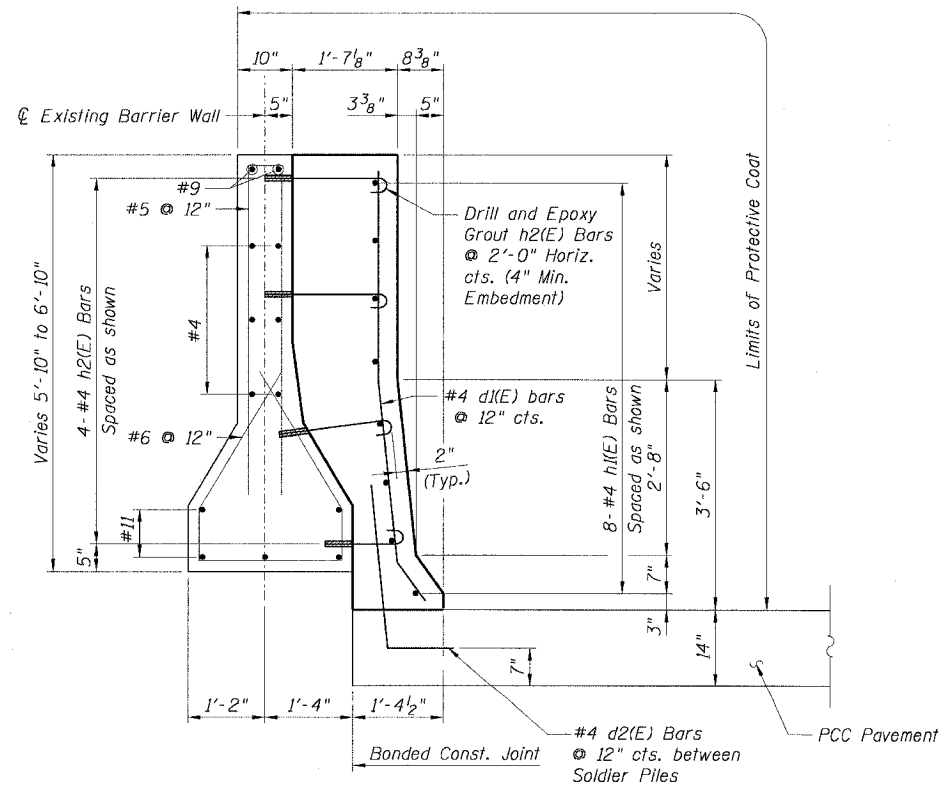


TYPICAL SECTION
AT SUB-PIER

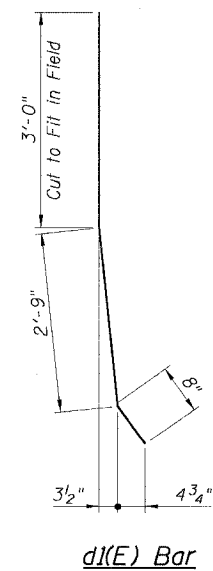
BILL OF MATERIAL

Bar	No.	Size	Length	Shape
d1(E)		#4	6'-5"	┌
d2(E)		#4	3'-6"	└
h1(E)		#4		—
h2(E)		#4	2'-4"	└
Item	Unit	Quantity		
Furnishing Soldier Piles, W12x...	Foot			
Drilling and Setting Soldier Piles (in Soil)	Cu. Ft.			
Untreated Timber Lagging	Sq. Ft.			
Concrete Removal	Cu. Yd.			
Reinforcement Bars, Epoxy Coated	Pound			
Concrete Superstructure	Cu. Yd.			
Protective Coat	Sq. Yd.			

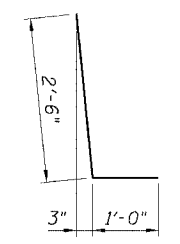
Remove Top Portion of Existing Concrete Sub-Pier. See Plan View



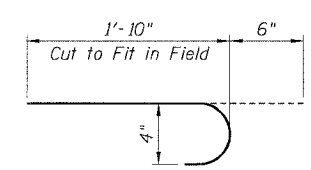
DETAIL 1



d1(E) Bar



d2(E) Bar



h2(E) Bar

LEGEND:

- Concrete Removal
- PCC Pavement
- BAM
- Sub Base
- Earth

NOTES:

- Drilling and grouting of #4 h2(E) bars shall be in accordance with Section 584 of the Standard Specifications.
- The cost of drilling holes, furnishing and placing Epoxy Grout and setting #4 h2(E) bars shall be included in the cost per cubic yard for Concrete Superstructure.
- #4 d2(E) bars shall be seated in their final position prior to the placement of the concrete shoulder. Bars shall be not mucked into place.
- Provide joints in facing to match those in the existing barrier wall. See Sheet B7 for details.
- Minimum lap length for #4 bars shall be 1'-8".
- For Typical Plan, see Sheet B3.
- For Existing Concrete Repair Details, see Sheet B3.
- For Facing Details at Existing Light Pole Foundation, see Sheet B5.

Sheet B2 of 16

REVISIONS	
NAME	DATE
MJP	8-12-05

ILLINOIS DEPARTMENT OF TRANSPORTATION
F.A.I. 90/94 (DAN RYAN EXPRESSWAY)
71ST STREET TO 31ST STREET (NB EXPRESS LANES)
EXISTING BARRIER WALL MODIFICATIONS
AT CTA STATIONS
PROPOSED T/S SHOULDER BELOW EXISTING
TYPICAL SECTIONS & DETAILS
SCALE: None DRAWN BY: KWT
DATE: July 7, 2005 CHECKED BY: RDP