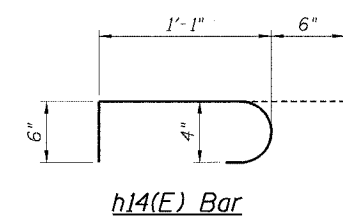
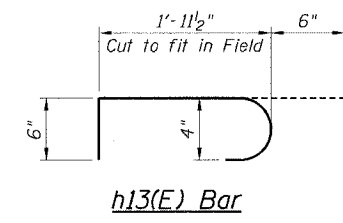
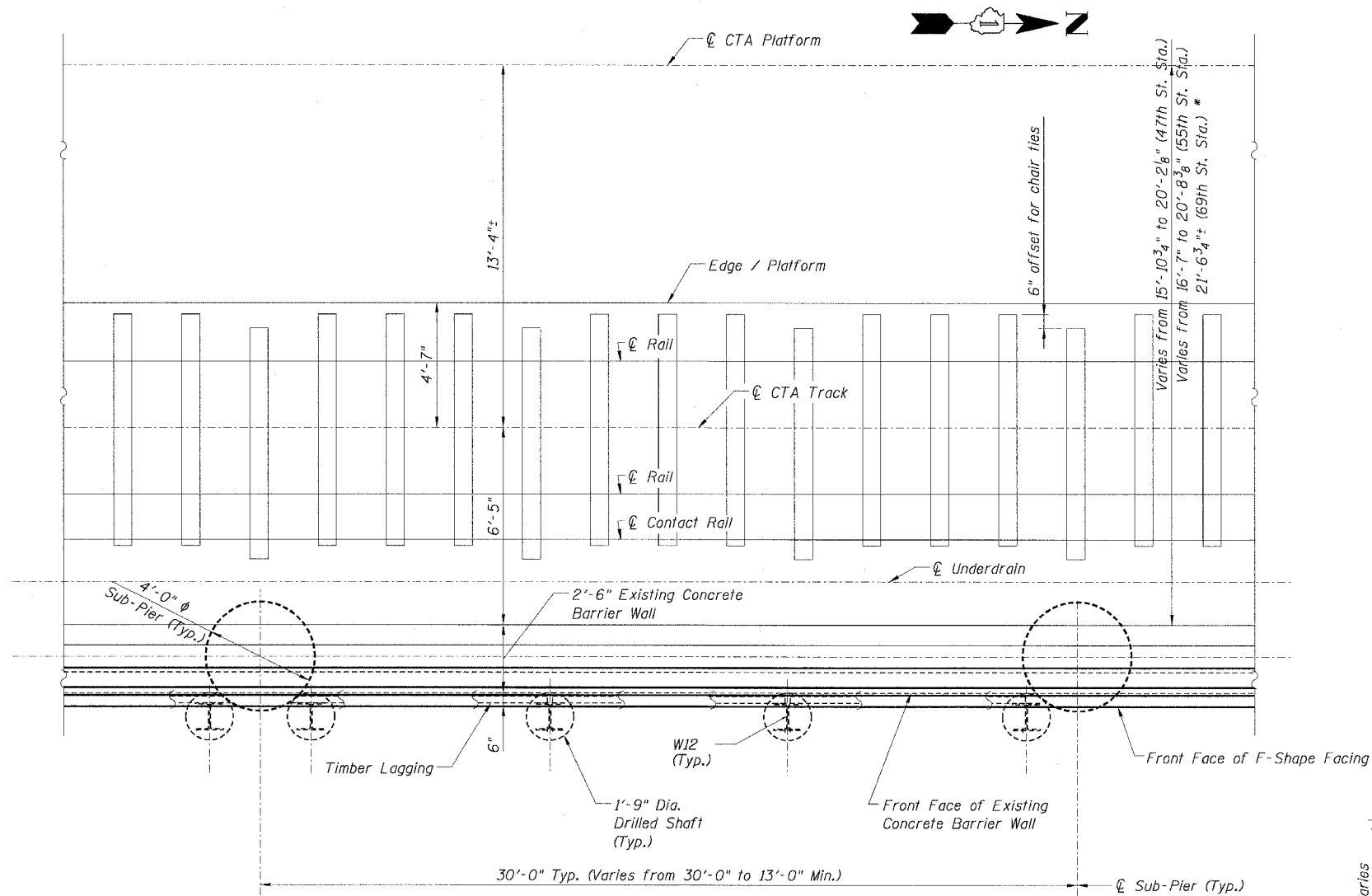


STATE OF ILLINOIS  
DEPARTMENT OF TRANSPORTATION

F.A.I. RTE.	SECTION	COUNTY	TOTAL SHEETS	SHEET NO.
90/94		COOK	556	373
STA.		TO STA.		
FED. ROAD DIST. NO. 1		ILLINOIS FED. AID PROJECT		
		• (1818, ETC, 2324.6-1PIR-8		
		62300		



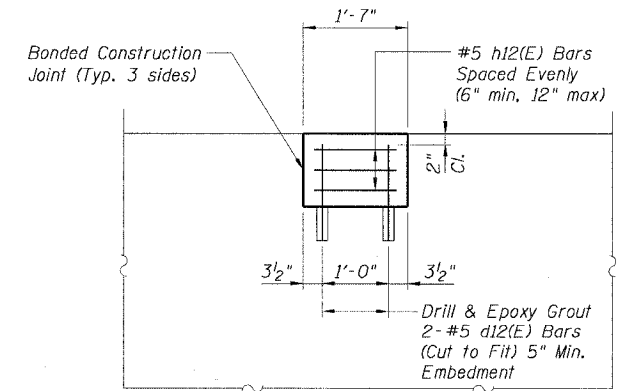
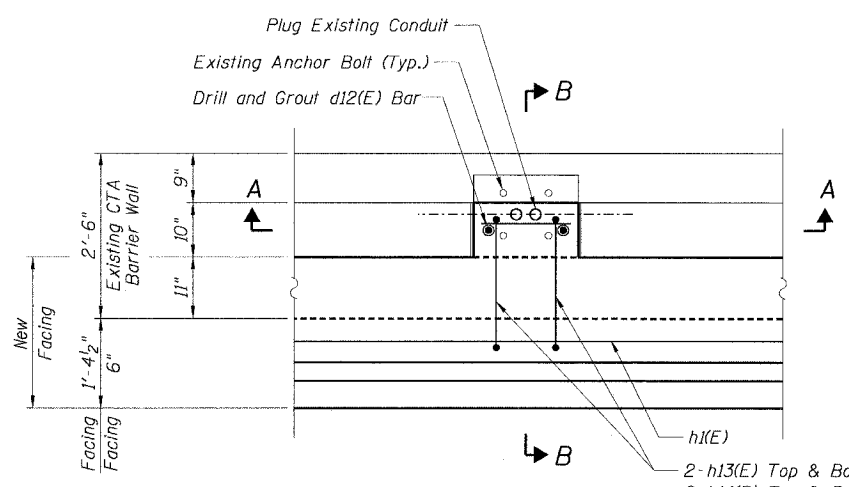
BAR SCHEDULE  
FOR 1'-4 1/2" FACING @ ONE LIGHT FDN.

Bar	No.	Size	Length	Shape
d12(E)	2	#5	2'-9"	—
h12(E)	3	#4	1'-4"	—
h13(E)	4	#4	3'-0"	U

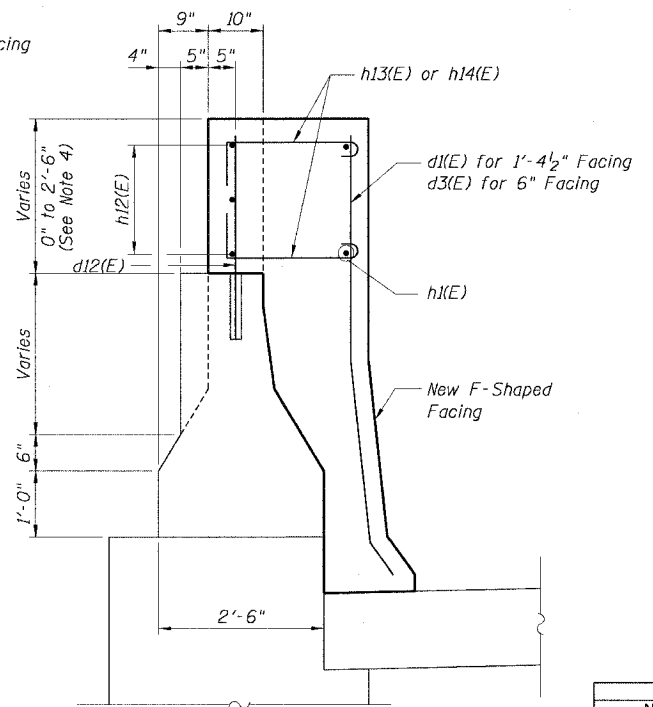
BAR SCHEDULE  
FOR 6" FACING @ ONE LIGHT FDN.

Bar	No.	Size	Length	Shape
d12(E)	2	#5	2'-9"	—
h12(E)	3	#4	1'-4"	—
h14(E)	4	#4	2'-1"	U

PLAN - (NORTH BOUND SHOWN)  
(SOUTH BOUND SIMILAR)



SECTION A-A  
FACING DETAILS AT  
EXISTING LIGHT POLE FOUNDATION



SECTION B-B

NOTES:

- Existing anchor bolts shall remain in place and be blast cleaned to gray metal.
- Drilling and grouting #4 d12(E) bars shall be in accordance with Section 584 of the Standard Specifications.
- The cost of drilling holes, furnishing and placing Epoxy Grout and setting #4 d12(E) bars and blast cleaning existing anchor bolts shall be included in the cost per cubic yard for Concrete Superstructure.
- For depth of existing light pole notch less than 10", do not use reinforcement bars.
- Cast new concrete monolithically with new F-Shape Facing.
- For Facing Details and Sections see Sheet B2.

CTE | AECOM

PLAN

REVISIONS	
NAME	DATE
MJP	8-12-05

Sheet B5 of 16  
ILLINOIS DEPARTMENT OF TRANSPORTATION  
F.A.I. 90/94 (DAN RYAN EXPRESSWAY)  
71ST STREET TO 31ST STREET (NB EXPRESS LANES)  
EXISTING BARRIER WALL MODIFICATIONS  
AT CTA STATIONS  
PROPOSED T/SHOULDER AT OR ABOVE EXISTING  
TYPICAL PLAN  
SCALE: None DRAWN BY: KWT/CHD  
DATE: July 7, 2005 CHECKED BY: RDP