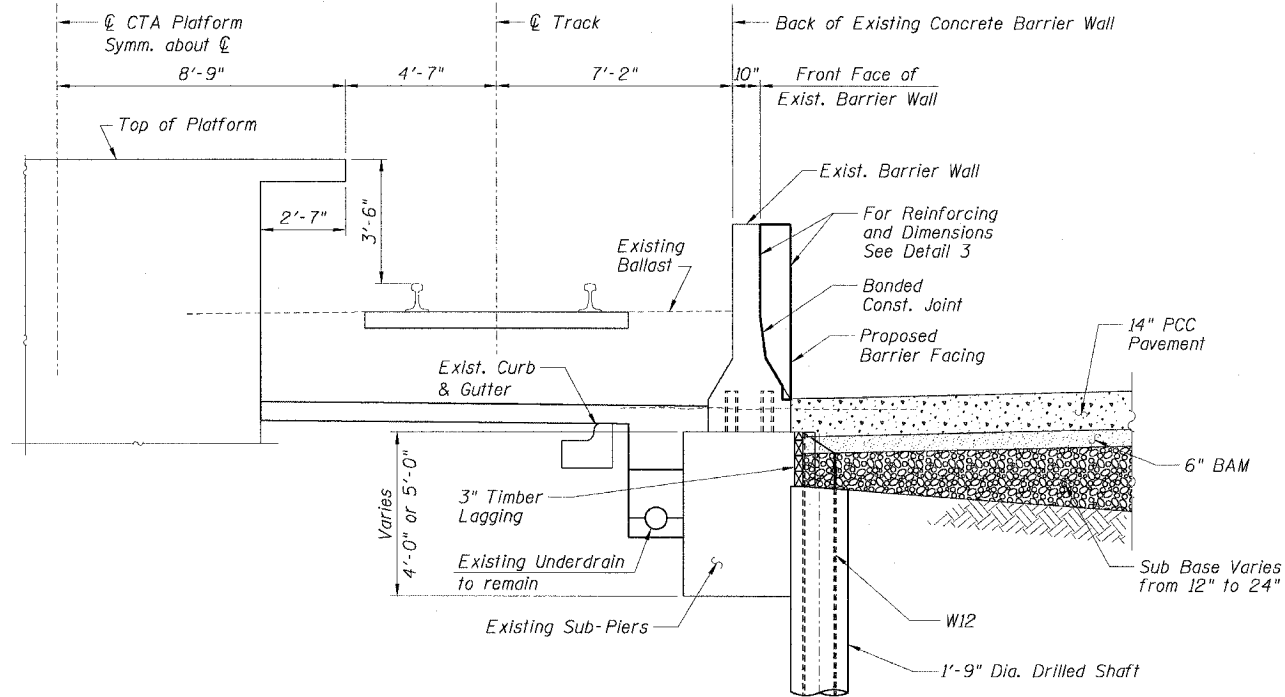
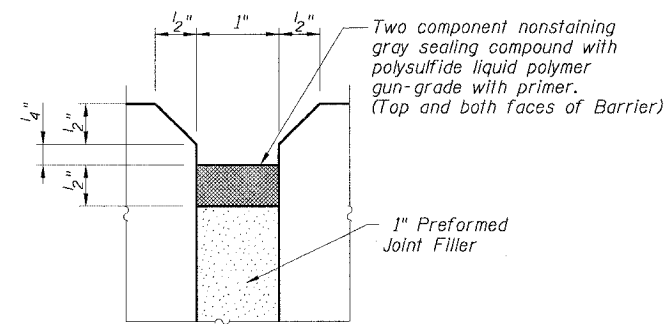


STATE OF ILLINOIS  
DEPARTMENT OF TRANSPORTATION

F.A.I. RTE.	SECTION	COUNTY	TOTAL SHEETS	SHEET NO.
90/94	*	COOK	556	375
STA.	TO STA.			
FED. ROAD DIST. NO. 1	ILLINOIS	FED. AID PROJECT		
* (1818, ETC. 2324.6-1)PR-8			62300	



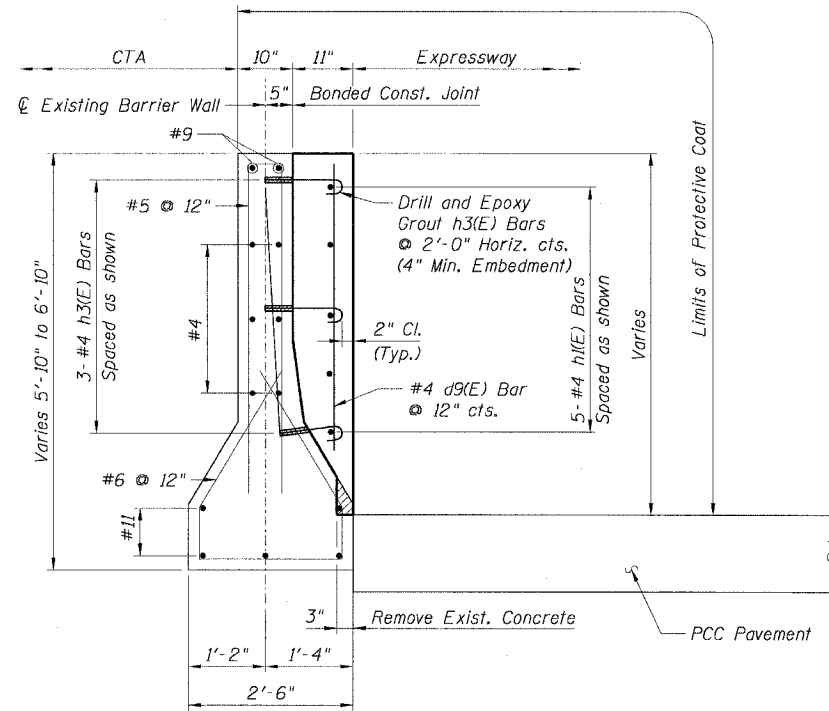
TYPICAL SECTION  
BETWEEN SUB-PIERS  
AT 69TH ST. STATION (NB)



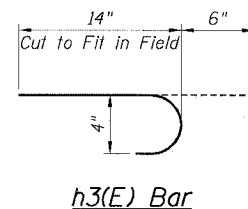
EXPANSION JOINT DETAIL  
AT EXISTING JOINTS

**BILL OF MATERIAL**

Bar	No.	Size	Length	Shape
d9(E)		#4	4'-2"	—
h1(E)		#4		—
h3(E)		#4	1'-8"	U
Item	Unit	Quantity		
Furnishing Soldier Piles W12x—	Foot			
Drilling and Setting				
Soldier Piles (in Soil)	Cu. Ft.			
Untreated Timber Lagging	Sq. Ft.			
Concrete Removal	Cu. Yd.			
Reinforcement Bars, Epoxy Coated	Pound			
Concrete Superstructure	Cu. Yd.			
Protective Coat	Sq. Yd.			



DETAIL 3



h3(E) Bar

LEGEND:

- Concrete Removal
- PCC Pavement
- BAM
- Sub Base
- Earth

NOTES:

1. Drilling and grouting of #4 h3(E) bars shall be in accordance with Section 584 of the Standard Specifications.
2. The cost of drilling holes, furnishing and placing Epoxy Grout and setting #4 h3(E) bars shall be included in the cost per cubic yard for Concrete Superstructure.
3. Provide joints in facing to match those in the existing barrier.
4. The cost of furnishing and installing sealing compound shall be included in the cost per cubic yard for Concrete Superstructure.
5. Minimum lap length for #4 bars shall be 1'-8".
6. For Existing Concrete Repair Details see Sheet B3.
7. For Facing Details at Existing Light Pole Foundation see Sheet B5.

CTE | AECOM

REVISIONS	
NAME	DATE
MJP	8-12-05

Sheet B7 of 16  
ILLINOIS DEPARTMENT OF TRANSPORTATION  
F.A.I. 90/94 (DAN RYAN EXPRESSWAY)  
71ST STREET TO 31ST STREET (NB EXPRESS LANES)  
EXISTING BARRIER WALL MODIFICATIONS  
AT CTA STATIONS  
TYPICAL SECTIONS & DETAILS  
FOR 69th ST. STATION (NB)  
SCALE: None DRAWN BY: KWT  
DATE: July 7, 2005 CHECKED BY: RDP

B:\107\2005\9-14-05 AM