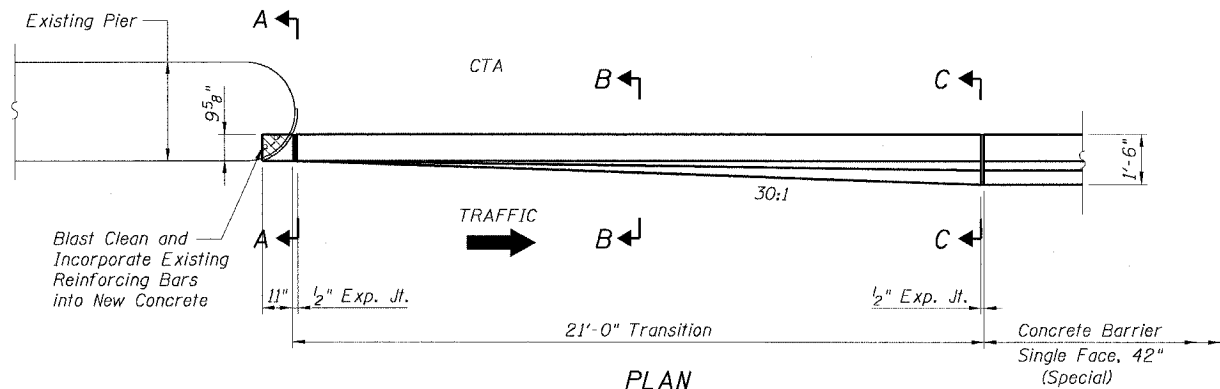


STATE OF ILLINOIS
DEPARTMENT OF TRANSPORTATION

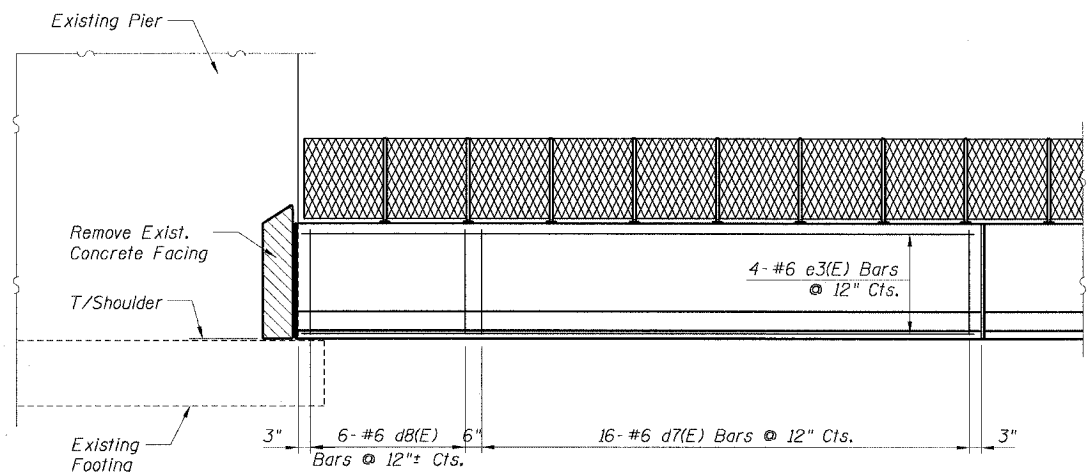
F.A.I. RTE.	SECTION	COUNTY	TOTAL SHEETS	SHEET NO.
90/94		COOK	556	384
STA.	TO STA.			
FED. ROAD DIST. NO. 1	ILLINOIS	FED. AID PROJECT		
• (181B, ETC, 2324.6-1PJR-8			62300	

**BILL OF MATERIAL
FOR ONE TRANSITION**

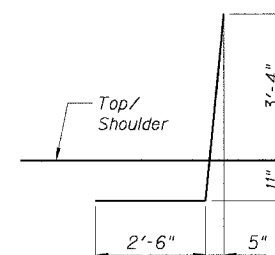
Bar	No.	Size	Length	Shape
a3(E)	3	#5	20'-8"	—
d7(E)	15	#6	6'-9"	—
d8(E)	5	#6	6'-9"	—
e3(E)	4	#6	20'-8"	—
Item			Unit	Quantity
Reinforcement Bars, Epoxy Coated			Pound	392
Concrete Superstructure			Cu. Yd.	2.6
Protective Coat			Sq. Yd.	10
Concrete Removal			Cu. Yd.	0.1



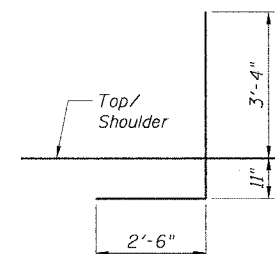
PLAN



ELEVATION



d7(E) BAR



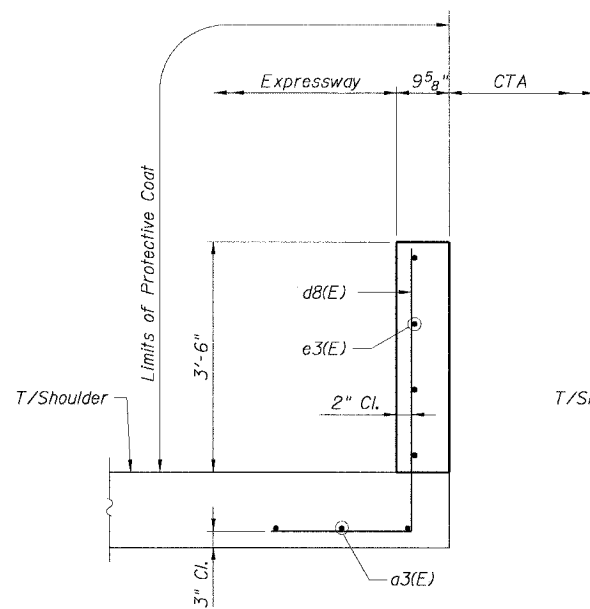
d8(E) BAR

LEGEND:

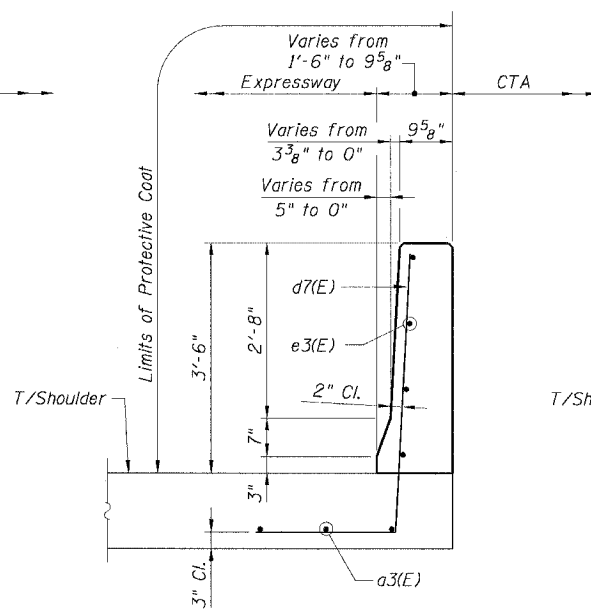
Concrete Removal

NOTES:

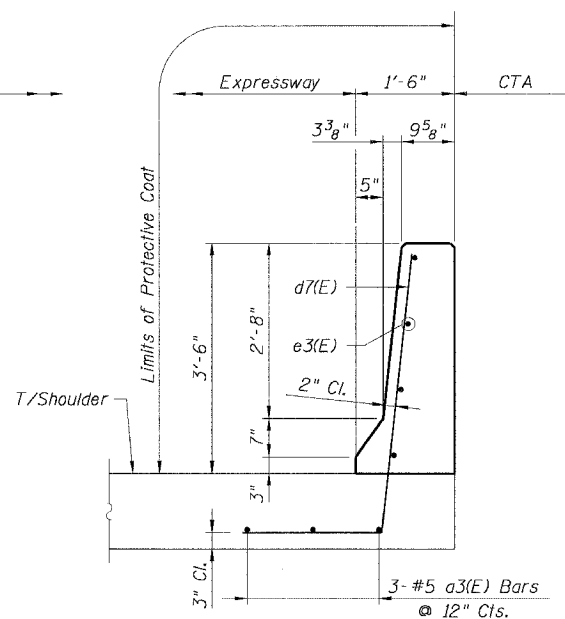
1. For Expansion Joint Details see Sheet B6.
2. For alternative vertical reinforcing details see "Concrete Barrier Single Face, 42" Alternatives".
3. For Concrete Barrier Single Face, 42" (Special), see Roadway details.
4. For locations of Transition, see Roadway Plans.



SECTION A-A



SECTION B-B



SECTION C-C

CTE | AECOM

REVISIONS	
NAME	DATE
MJP	8-12-05

Sheet B16 of 16
ILLINOIS DEPARTMENT OF TRANSPORTATION
F.A.I. 90/94 (DAN RYAN EXPRESSWAY)
71ST STREET TO 31ST STREET (NB EXPRESS LANES)
EXISTING BARRIER WALL MODIFICATIONS
AT CTA STATIONS
PROP. T/SOULDER ABOVE OR BELOW EXISTING
NEW 42" BARRIER TO PIER
TRANSITION DETAILS
SCALE: None DRAWN BY: CHD
DATE: July 7, 2005 CHECKED BY: RDP