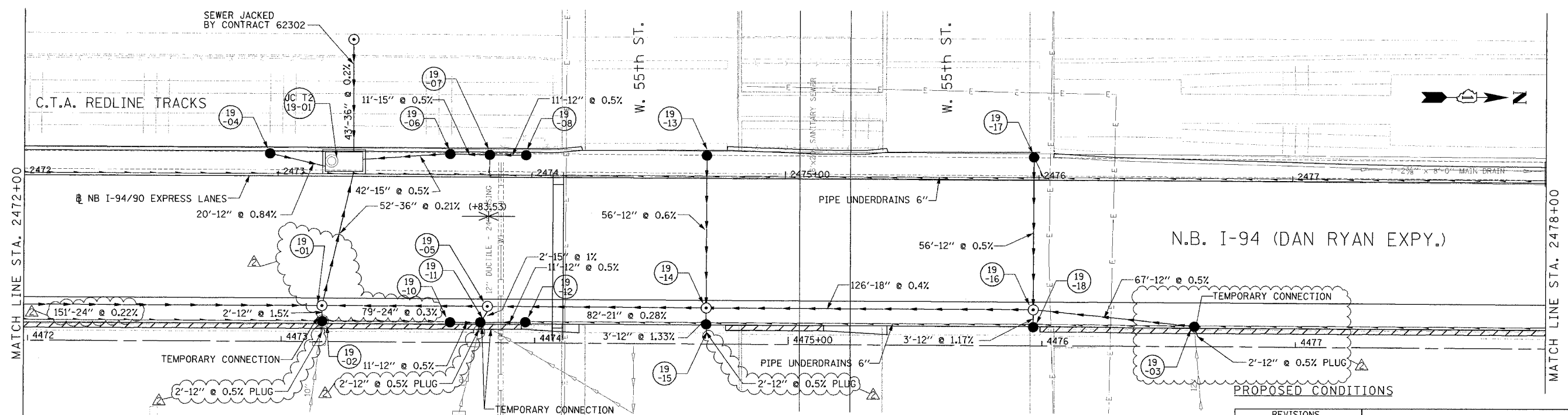
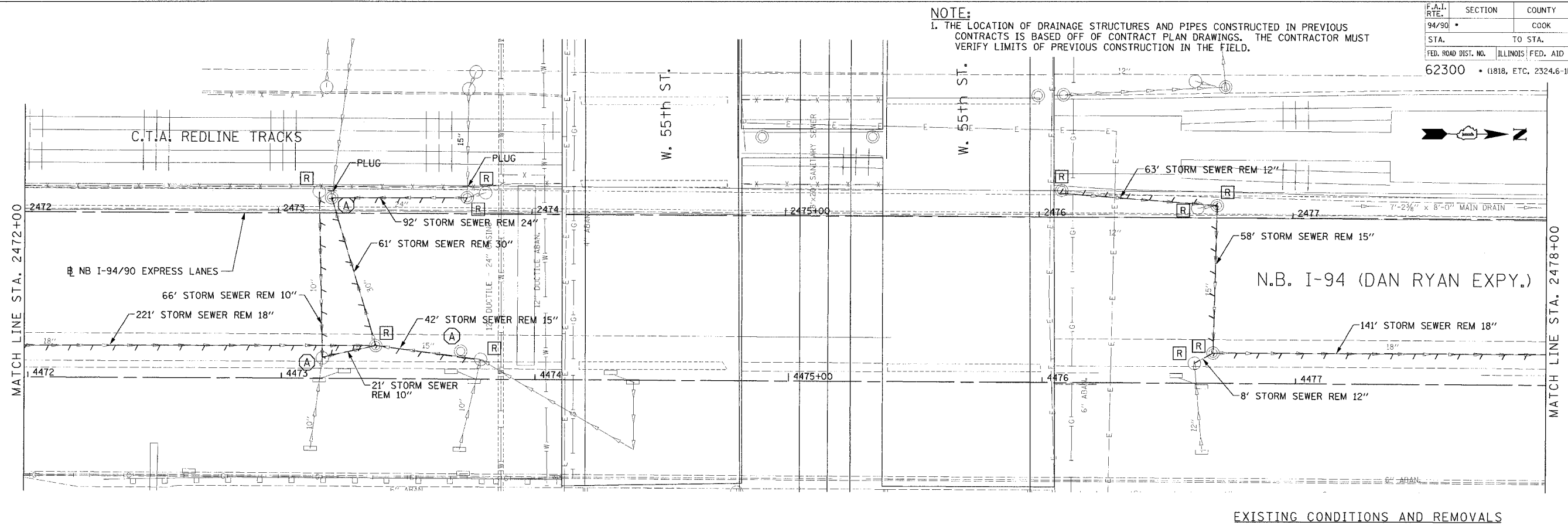


NOTE:
 1. THE LOCATION OF DRAINAGE STRUCTURES AND PIPES CONSTRUCTED IN PREVIOUS CONTRACTS IS BASED OFF OF CONTRACT PLAN DRAWINGS. THE CONTRACTOR MUST VERIFY LIMITS OF PREVIOUS CONSTRUCTION IN THE FIELD.

F.A.I. RTE.	SECTION	COUNTY	TOTAL SHEETS	SHEET NO.
94/90	*	COOK	556	175
STA.	TO STA.			
FED. ROAD DIST. NO.	ILLINOIS	FED. AID PROJECT		
62300	(1818, ETC.	2324.6-1PR-8		



REVISIONS		
NO.	NAME	DATE
1	ADDENDUM 2	9/16/05

ILLINOIS DEPARTMENT OF TRANSPORTATION
 F.A.I. 94/90 (DAN RYAN EXPRESSWAY)
 31ST STREET TO 71ST STREET
 NB EXPRESS LANE RECONSTRUCTION
 DRAINAGE AND UTILITIES PLAN
 NORTHBOUND STA. 2472+00 TO STA. 2478+00
 SCALE: 1"=20'
 DATE: 7/1/05
 DRAWN BY: LPN
 CHECKED BY: PJM

**Edwards
 and Kelcey**
 ONE NORTH FRANKLIN
 CHICAGO, IL 60606
 PHONE: (312) 251-3000
 FAX: (312) 251-3015
 WEB: WWW.EKCORP.COM

P:\030019\035\Corr_148\5\CAD\DWG\404292.dwg
 09/15/2005 02:07:59 PM