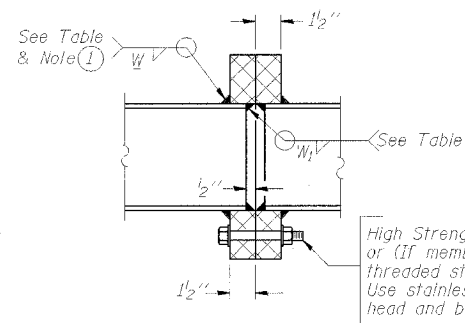


TRUSS UNIT TABLE

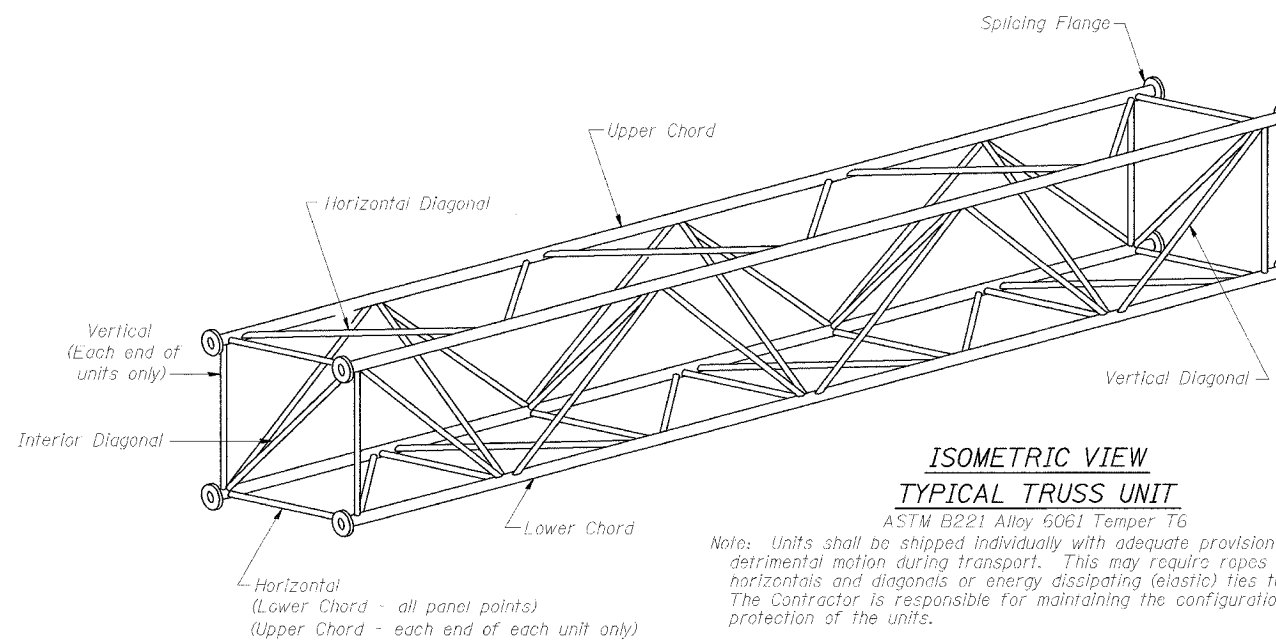
Structure Number	Station	Design Truss Type	Exterior Units (2)			Interior Unit				Upper & Lower Chord		Verticals; Horizontals; Vertical, Horizontal, and Interior Diagonals		Camber at Midspan	Splicing Flange					
			No. Panels per Unit	Unit Lgth.(L _e)	Panel Lgth.(P)	No. Req'd.	No. Panels per Unit	Unit Lgth.(L _i)	Panel Lgth.(P)	O.D.	Wall	O.D.	Wall		Bolts		Weld Sizes		A	B
															No./Splice	Dia.	W	W ₁		
ISO161094R055.41	4598+65	III-A	7	35'-8 1/2"	4'-10"	-	-	-	-	7"	5/16"	3 1/4"	5/16"	1.73"	6	1"	7/16"	5/16"	11 1/2"	15"
ISO161094L058.4	2442+20	I-A	7	36'-10 1/2"	5'-0"	-	-	-	-	5"	5/16"	2 1/2"	5/16"	1.75"	6	7/8"	5/16"	1/4"	8 3/4"	11 3/4"



SECTION B-B

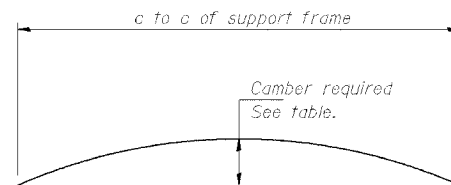
High Strength bolts with locknuts or (if members interfere) threaded studs with 2 locknuts. Use stainless steel washers under head and nut. See table.

① Splicing Flanges shall be attached to each truss unit with the truss shop assembled to camber shown. Truss units shall be in proper alignment and flange surfaces shall be shop bolted into full contact before welding. Sufficient external welds or tacks shall be made to secure flanges until remaining welds are made after disassembly. Adjacent flanges shall be "match marked" to insure proper field assembly.



ISOMETRIC VIEW TYPICAL TRUSS UNIT

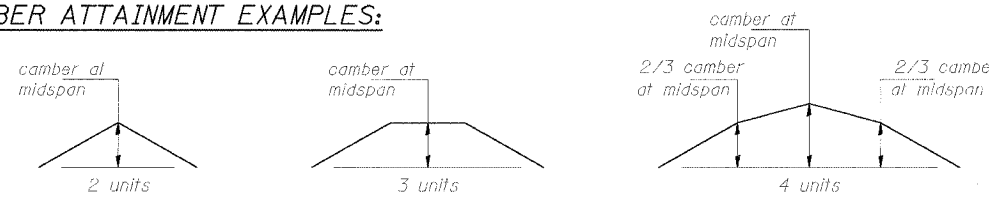
ASTM B221 Alloy 6061 Temper T6



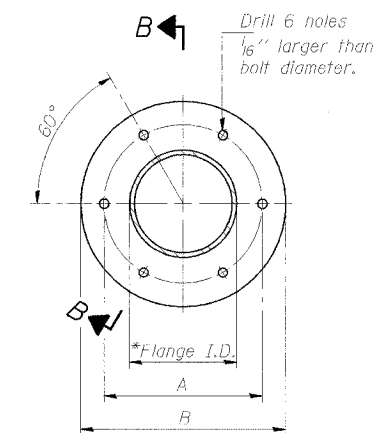
CAMBER DIAGRAM

Camber curve shown is theoretical. Actual camber attained by slope changes at splices between units.

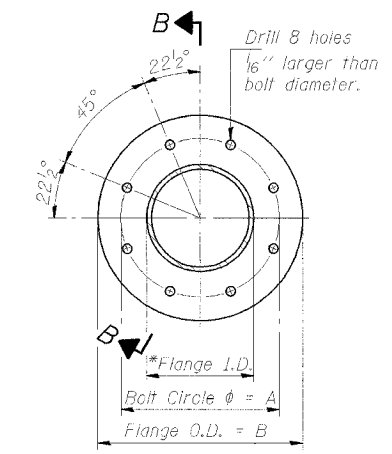
CAMBER ATTAINMENT EXAMPLES:



Camber shown is for fabrication only, measured with truss fully supported. (No-load condition)



TRUSS TYPES I-A, II-A, & III-A



TRUSS TYPES II-A & III-A

SPLICING FLANGES

ASTM B221, Alloy 6061-T6
or ASTM B209, Alloy 6061-T651
*To fit O.D. of Chord with maximum gap of 1/16".

NUMBER	REVISION	DATE
2	ADDENDUM 2	9/16/05

DESIGNED - MSA	20
CHECKED - AS	EXAMINED
DRAWN - MD	PASSED
CHECKED - MSA	

OS4-A-2 11/2/2002

SGN-12

**OVERHEAD SIGN STRUCTURES
ALUMINUM TRUSS DETAILS
FOR TRUSS TYPES I-A, II-A and III-A**

ILLINOIS DEPARTMENT OF TRANSPORTATION

F.A.I. 94/90 (DAN RYAN EXPRESSWAY)

31st STREET TO 71st STREET
NB EXPRESS LANE RECONSTRUCTION
OVERHEAD SIGN STRUCTURES

P:\050019\0505\Corr 11815\CAD\DWG\Revision 2.SS\40052.A577 08/14/2005 09:36 PM