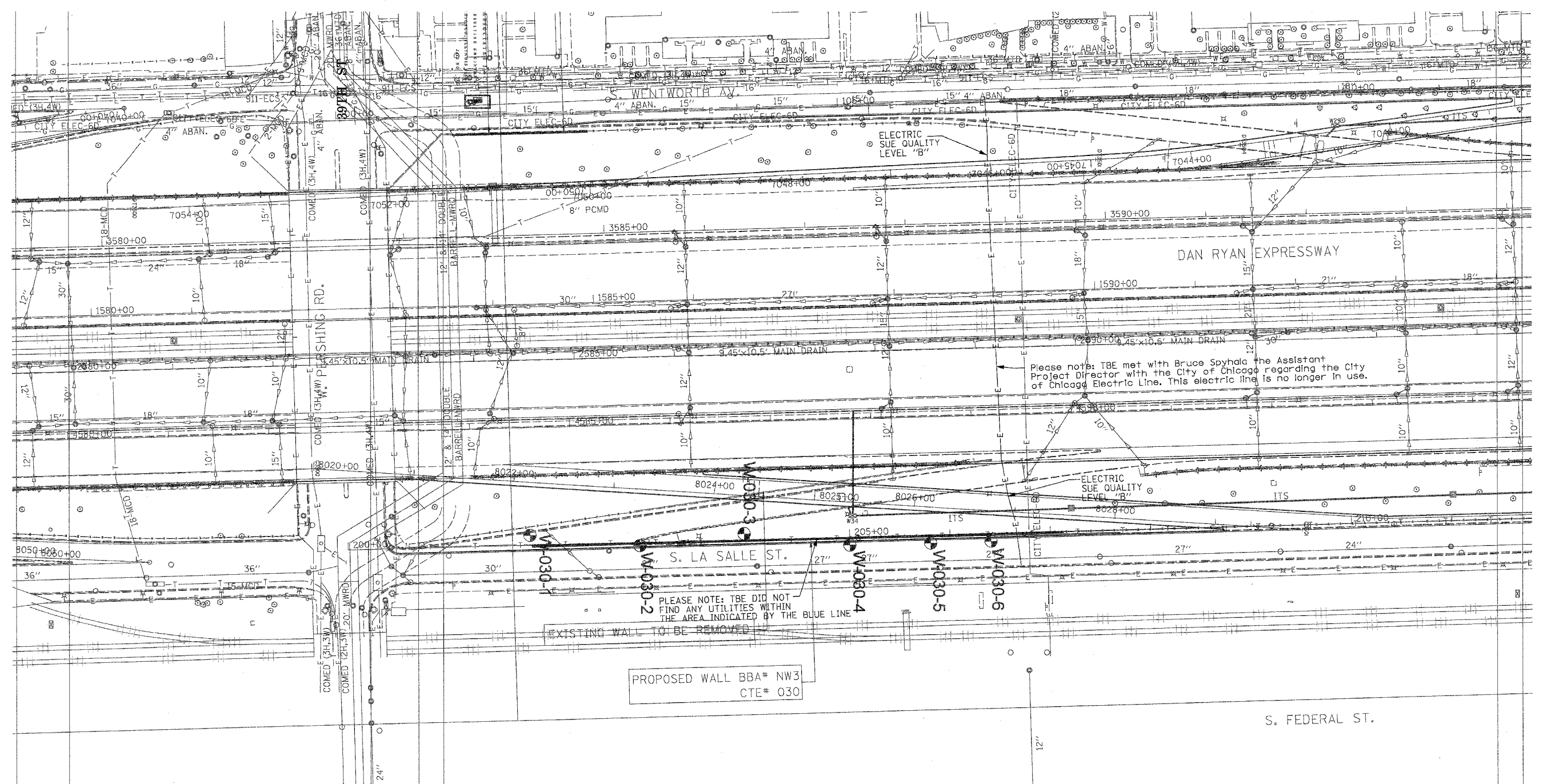


F.A. RTE.	SECTION	COUNTY	TOTAL SHEETS	SHEET NO.
	0516,1717 & 1818-6	Cook	598	249A
STA.		TO STA.		
FED. ROAD DIST. NO.		ILLINOIS FED. AID PROJECT		



Please note: TBE met with Bruce Spychal, the Assistant Project Director with the City of Chicago regarding the City of Chicago Electric Line. This electric line is no longer in use.

PLEASE NOTE: TBE DID NOT FIND ANY UTILITIES WITHIN THE AREA INDICATED BY THE BLUE LINE

PROPOSED WALL BBA# NW3
CTE# 030



TBE GROUP, INC.
 CIVIL ENGINEERING * TRANSPORTATION * ENVIRONMENTAL
 * PLANNING * UTILITY ENGINEERING/LOCATING
 SOUTHERN REGION: FL, GA, SC, NC
 NORTHERN REGION: IL, IN, MI, OH, MD, NJ, NY
 PA, VA, CANADA
 WESTERN REGION: AZ, NV, NM, TX, CA, OR, UT, WA

IL09500164, 167, 168, 170, 171, 179, 180, 182, 204,
 205, 206, 211, 212, 219, 221, 225, 226, 227, 228, 230, 232
 TBE SUE PAGE NO: 33 of 36
 Checked by: *Sandra Davis PE*
 SUE Quality Level "A" : Test Holes
 SUE Quality Level "B" : Designating

— TS —	— TS —	TRAFFIC SIGNAL
— SL —	— SL —	STREET LIGHT
— COCE —	— COCE —	CITY OF CHICAGO ELECTRIC
— T —	— T —	TELEPHONE
— W —	— W —	WATER
— G —	— G —	GAS
— CTV —	— CTV —	CABLE TELEVISION
— FO —	— FO —	FIBER OPTIC
— E —	— E —	ELECTRIC
●	●	TEST HOLE

Utilities shown on these plans as depicted in the legend have been investigated by TBE Group, Inc in accordance with SUE Industry Standards. All other information shown has been provided to TBE Group, Inc by others.

205 W. WACKER DRIVE
 SUITE 1020
 CHICAGO, IL 60606
 (312) 704-1970

TBE could not locate buried utilities directly beneath the expressway due to traffic and safety issues.

REVISIONS	
NAME	DATE
Sheet Added	8/2/04

ILLINOIS DEPARTMENT OF TRANSPORTATION
 SUE Investigation of Underground Utilities
 I-90/I-94 Dan Ryan Expressway from
 1-57 to 69th Street
 Contract Numbers 62590, 62592, 62594
 SQL "B" DATE : 7/22/04
 DRAWN BY : KLC
 SCALE : 1" = 50'