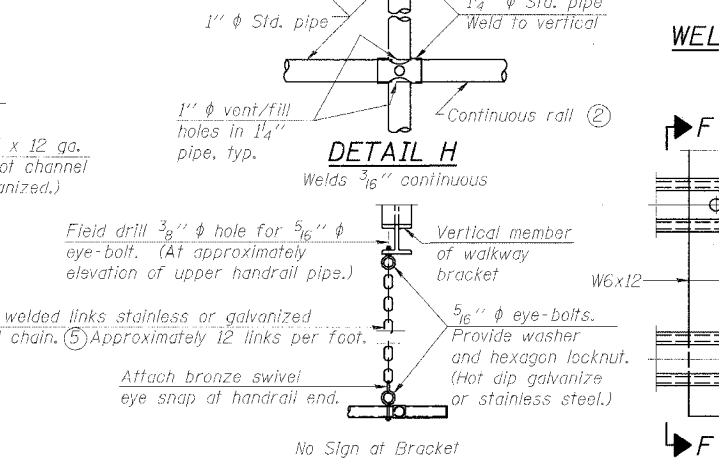
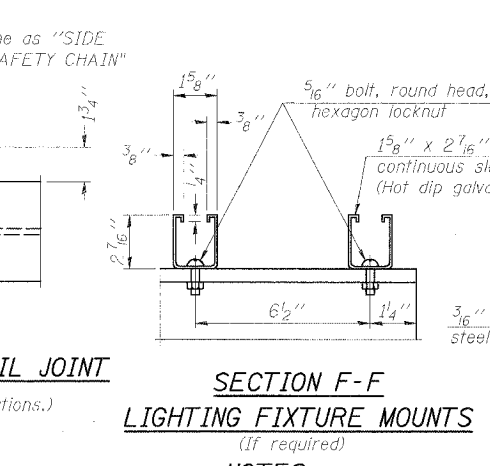
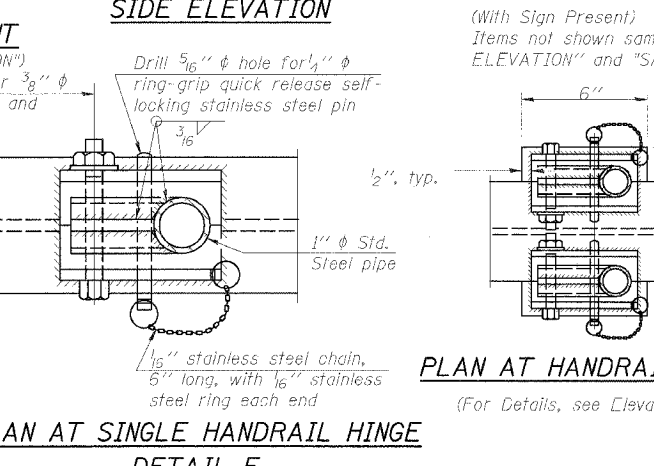
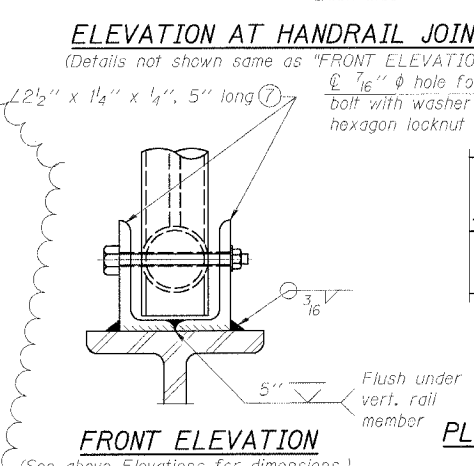
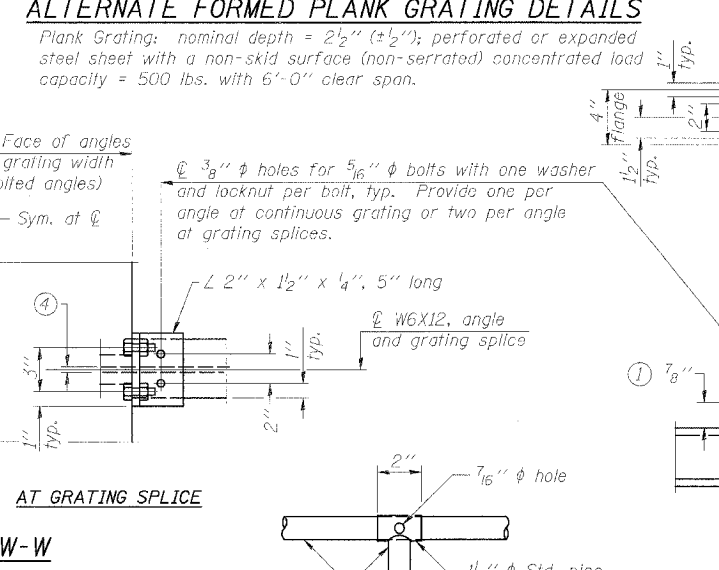
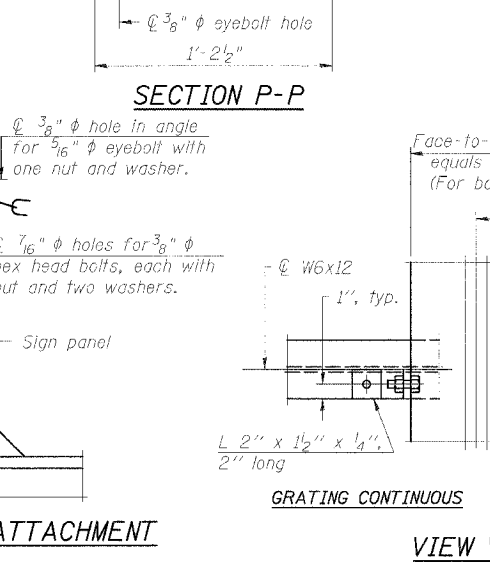
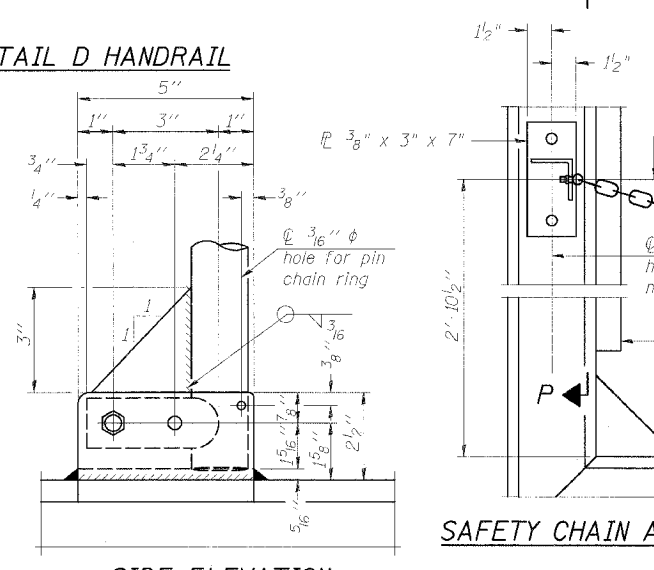
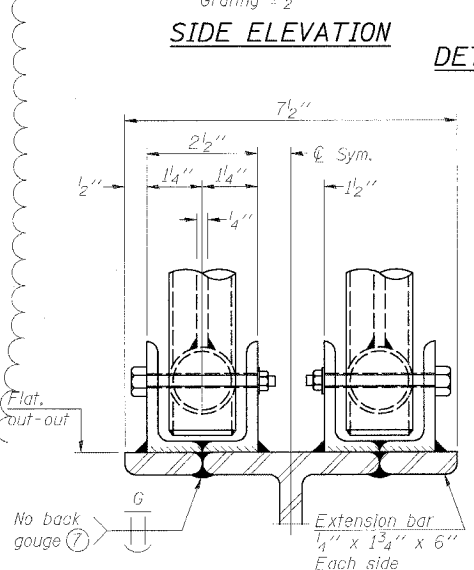
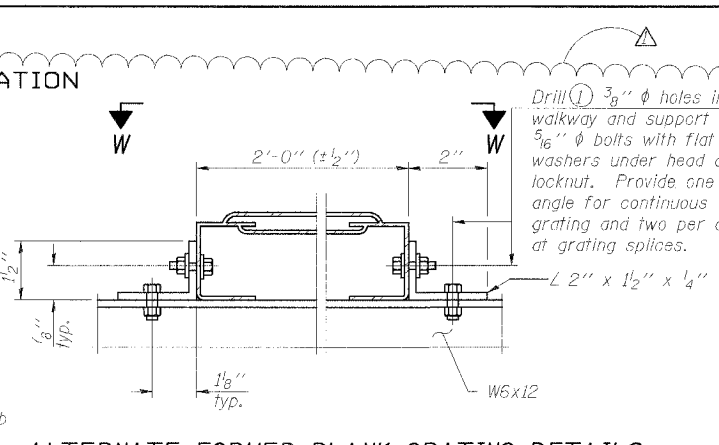
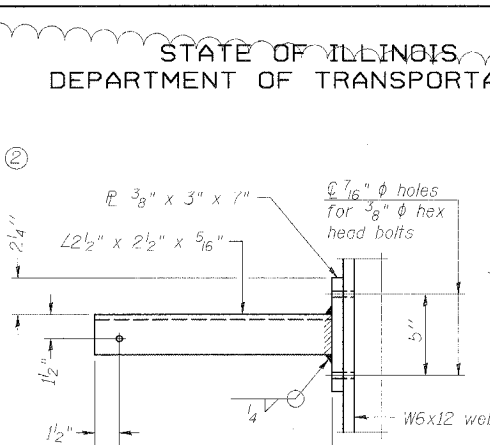
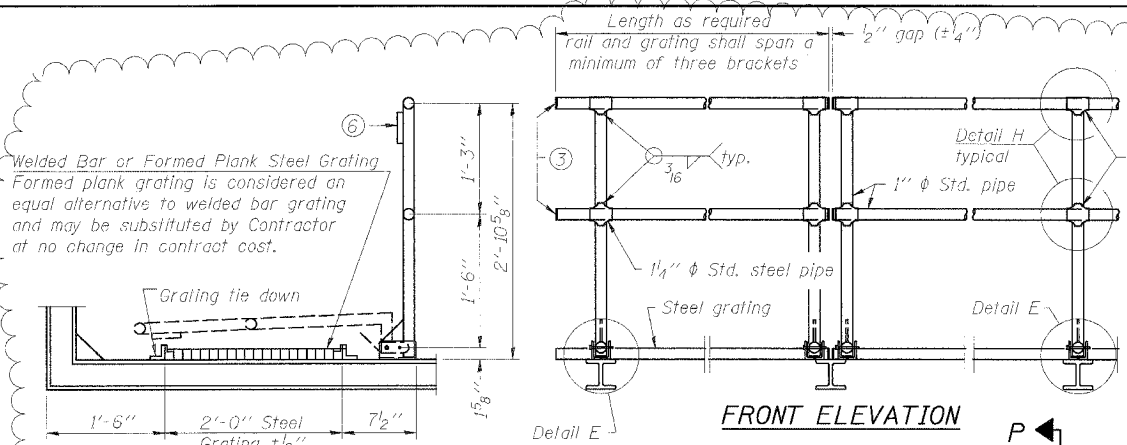


STATE OF ILLINOIS  
DEPARTMENT OF TRANSPORTATION

ROUTE NO.	SECTION	COUNTY	SHEETS	SHEET NO.
94/90	*	COOK	598	338D
SHEETS				



NUMBER	REVISION	DATE
△	ADDENDUM 1	8/21/05

DESIGNED: RLK	EXAMINED: _____
CHECKED: ELL	PASSED: _____
DRAWN: ABW	ENGINEER OF BRIDGE DESIGN
CHECKED: PJM	ENGINEER OF BRIDGE AND STRUCTURES

- NOTES**
- Drilling holes in grating may be done in shop or field, based on Contractor's preference and subject to accurate alignment. Field drilled holes must be touched up with galvanized paint.
  - Horizontal rail member shall be continuous thru 1 1/4 inch diameter pipe. Provide 7/16 inch diameter hole in fitting for 3/8 inch diameter bolt. Field drill 7/16 inch diameter hole in horizontal rail member. Provide washer and locknut for bolt. (Use 5/16 inch eye bolts in 7/16 inch diameter holes on top rail at ends only.)
  - Install standard force-fit end caps or weld 1/8 inch end plates with 1/8 inch c.f.w. and grind smooth. (All rail ends.)
  - 3/8 inch (± 1/4 inch) gap between grating panels at splice.
  - Chain to be hot dip galvanized after manufacture or stainless steel suitable for prolonged exterior exposure. Approximately 3'-6" long chain per location. Maximum sag with handrail erected = 4".
  - 1/2 inch x 1/2 inch x 2 inch welded to handrail posts to protect locations that contact grating.
  - Extrusions may be used in lieu of details shown, with approval by Engineer.
  - Field cut ends of light support channels shall be free of burrs or hazardous projections and coated with zinc-rich primer or equivalent.

BRIDGE MOUNT SIGN STRUCTURES  
WALKWAY DETAILS  
ILLINOIS DEPARTMENT OF TRANSPORTATION  
F.A.I. 94/90 (DAN RYAN EXPRESSWAY)  
31ST STREET TO 71ST STREET  
NB EXPRESS LANE RECONSTRUCTION  
OVERHEAD SIGN STRUCTURES  
(BRIDGE MOUNTED)