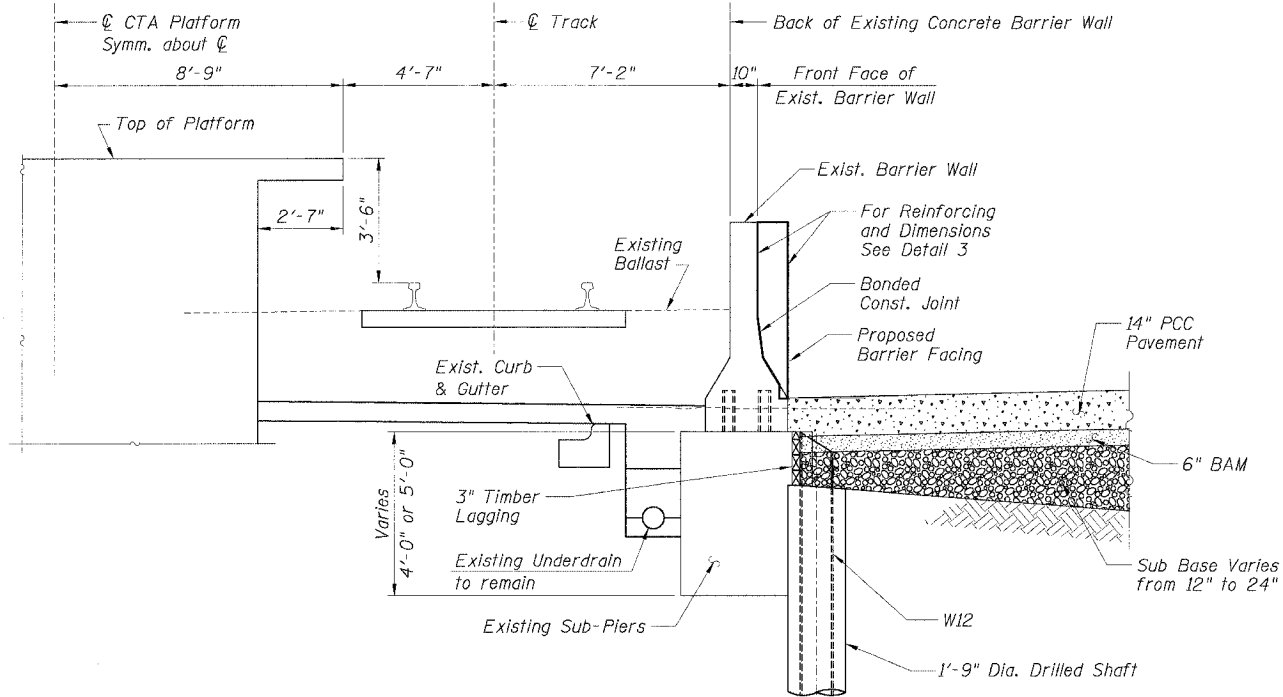
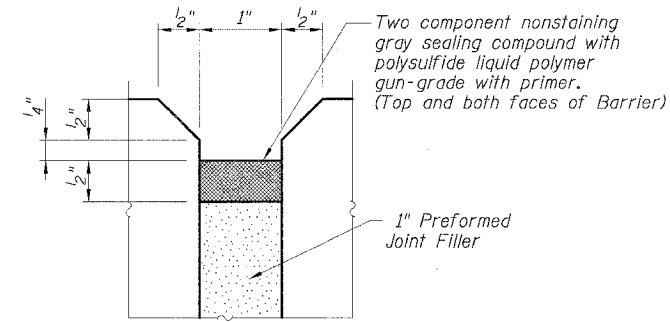


STATE OF ILLINOIS
DEPARTMENT OF TRANSPORTATION

F.A.I. RTE.	SECTION	COUNTY	TOTAL SHEETS	SHEET NO.
90/94		COOK	598	415
STA.	TO STA.			
FED. ROAD DIST. NO. 1 ILLINOIS FED. AID PROJECT				
• (181B, ETC, 2324.6-10R-9) 62302				



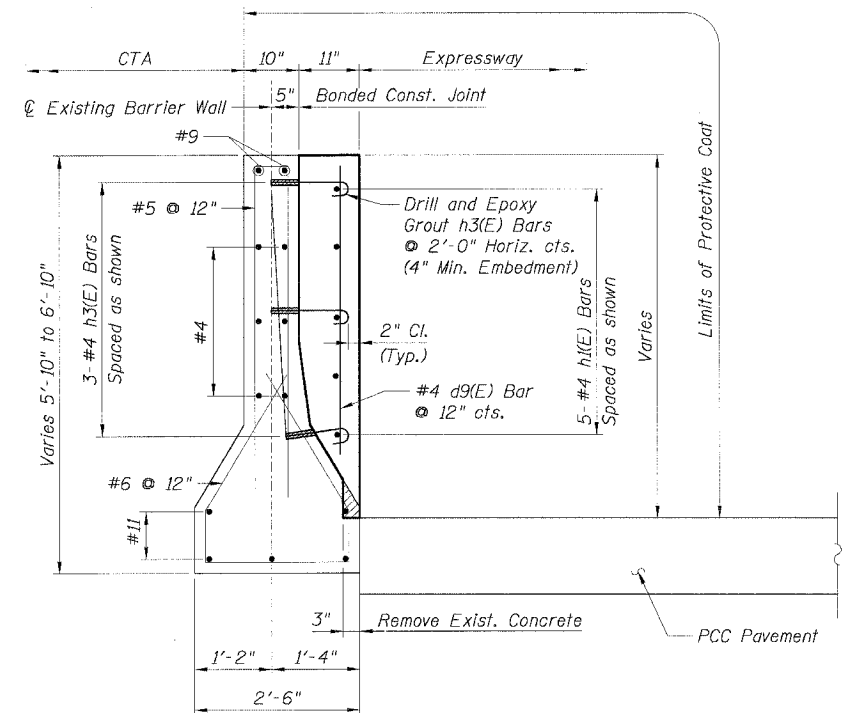
TYPICAL SECTION
BETWEEN SUB-PIERS
AT 69TH ST. STATION (NB)



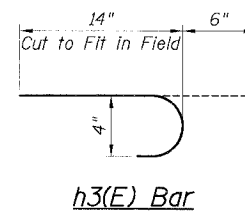
EXPANSION JOINT DETAIL
AT EXISTING JOINTS

BILL OF MATERIAL

Bar	No.	Size	Length	Shape
d9(E)		#4	4'-2"	—
h1(E)		#4		—
h3(E)		#4	1'-8"	—
Item		Unit	Quantity	
Furnishing Soldier Piles W12x		Foot		
Drilling and Setting Soldier Piles (in Soil)		Cu. Ft.		
Untreated Timber Lagging		Sq. Ft.		
Concrete Removal		Cu. Yd.		
Reinforcement Bars, Epoxy Coated		Pound		
Concrete Superstructure		Cu. Yd.		
Protective Coat		Sq. Yd.		



DETAIL 3



h3(E) Bar

LEGEND:

	Concrete Removal
	PCC Pavement
	BAM
	Sub Base
	Earth

NOTES:

1. Drilling and grouting of #4 h3(E) bars shall be in accordance with Section 584 of the Standard Specifications.
2. The cost of drilling holes, furnishing and placing Epoxy Grout and setting #4 h3(E) bars shall be included in the cost per cubic yard for Concrete Superstructure.
3. Provide joints in facing to match those in the existing barrier.
4. The cost of furnishing and installing sealing compound shall be included in the cost per cubic yard for Concrete Superstructure.
5. Minimum lap length for #4 bars shall be 1'-8".
6. For Existing Concrete Repair Details see Sheet B3.
7. For Facing Details at Existing Light Pole Foundation see Sheet B5.

CTE | AECOM

REVISIONS	
NAME	DATE
MJP	8-12-05

Sheet B7 of 18
ILLINOIS DEPARTMENT OF TRANSPORTATION
F.A.I. 90/94 (DAN RYAN EXPRESSWAY)
71ST STREET TO 31ST STREET (SB EXPRESS LANES)
EXISTING BARRIER WALL MODIFICATIONS
AT CTA STATIONS
TYPICAL SECTIONS & DETAILS
FOR 69th ST. STATION (NB)
SCALE: None DRAWN BY: KWT
DATE: July 7, 2005 CHECKED BY: RDP