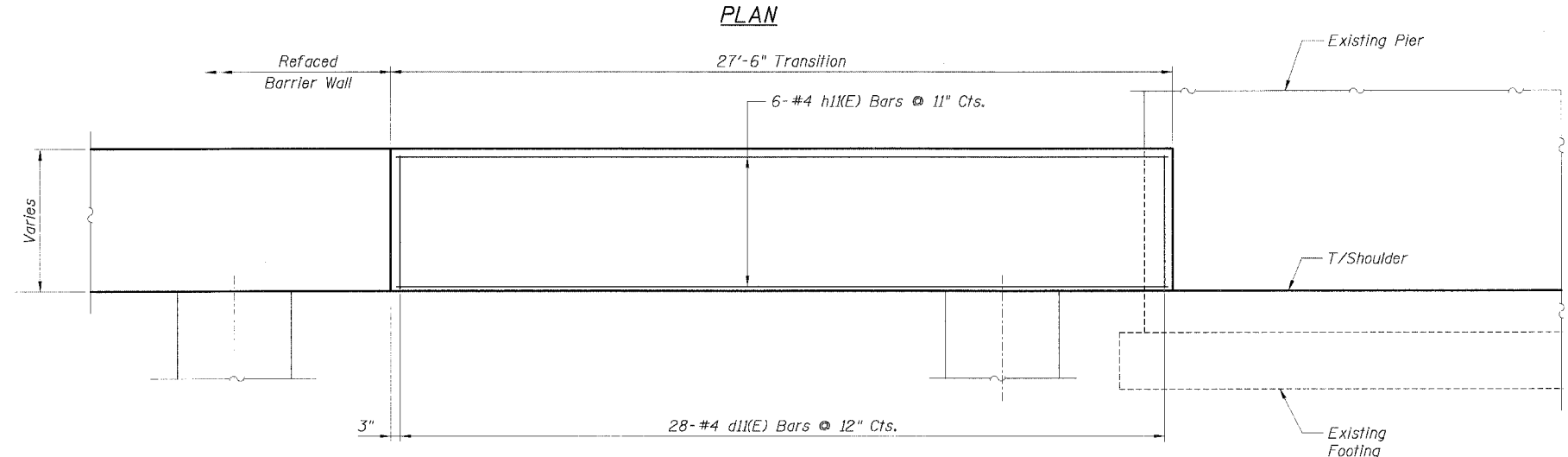
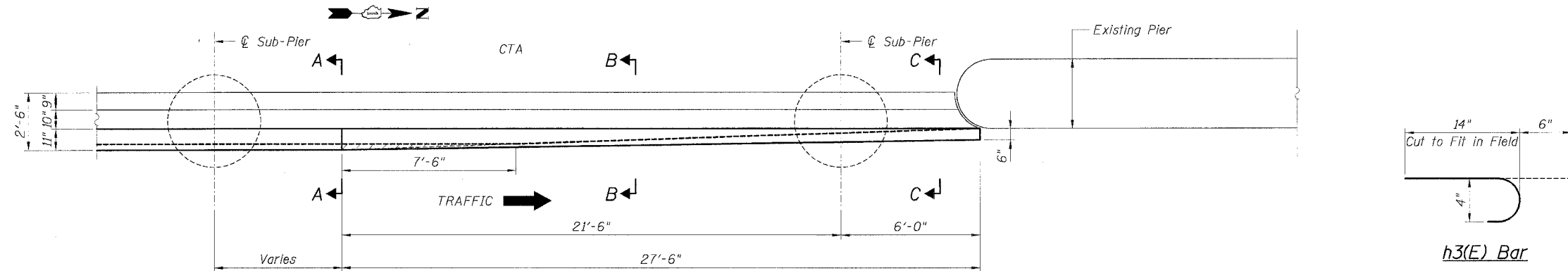


STATE OF ILLINOIS
DEPARTMENT OF TRANSPORTATION

F.A.I. RTE. 90/94	SECTION *	COUNTY COOK	TOTAL SHEETS 598	SHEET NO. 421
STA. TO STA.		FED. ROAD DIST. NO. 1 ILLINOIS FED. AID PROJECT		
		• (1818, ETC., 2324.6-101R-9) 62302		



ELEVATION

BILL OF MATERIAL FOR ONE TRANSITION

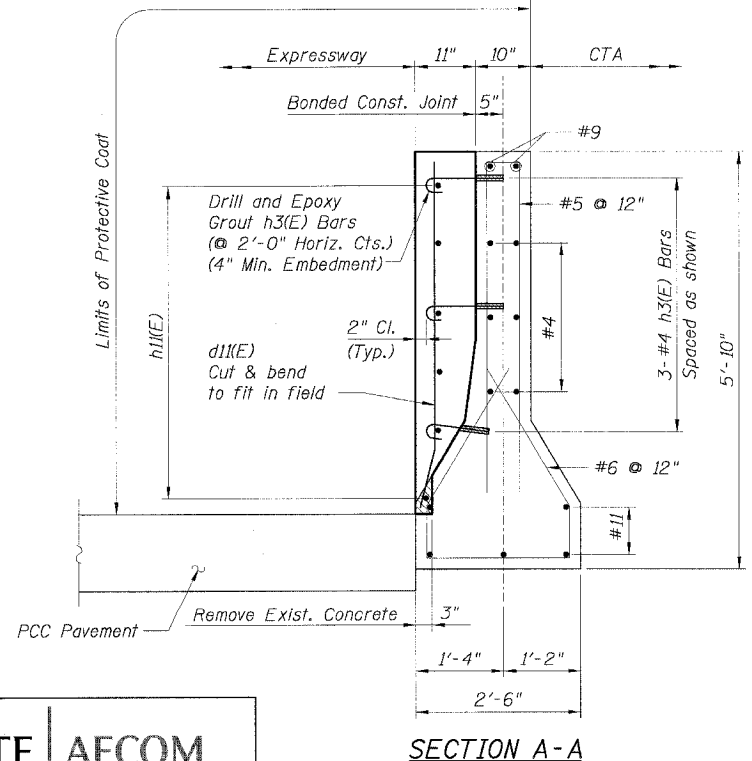
Bar	No.	Size	Length	Shape
d1(E)	28	#4	4'-8"	—
h3(E)	42	#4	1'-8"	U
h1(E)	6	#4	24'-8"	—
Item	Unit	Quantity		
Reinforcement Bars, Epoxy Coated	Pound	233		
Concrete Superstructure	Cu. Yd.	3.2		
Protective Coat	Sq. Yd.	20		
Concrete Removal	Cu. Yd.	0.1		

LEGEND:

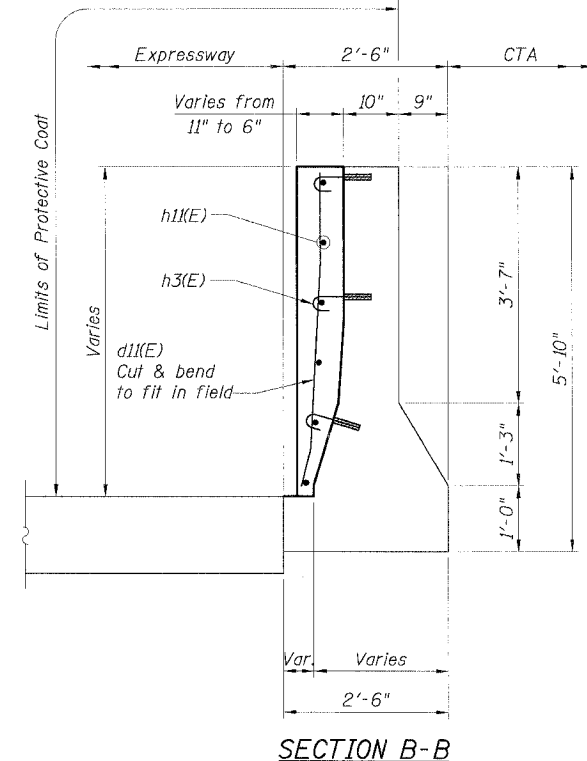


NOTES:

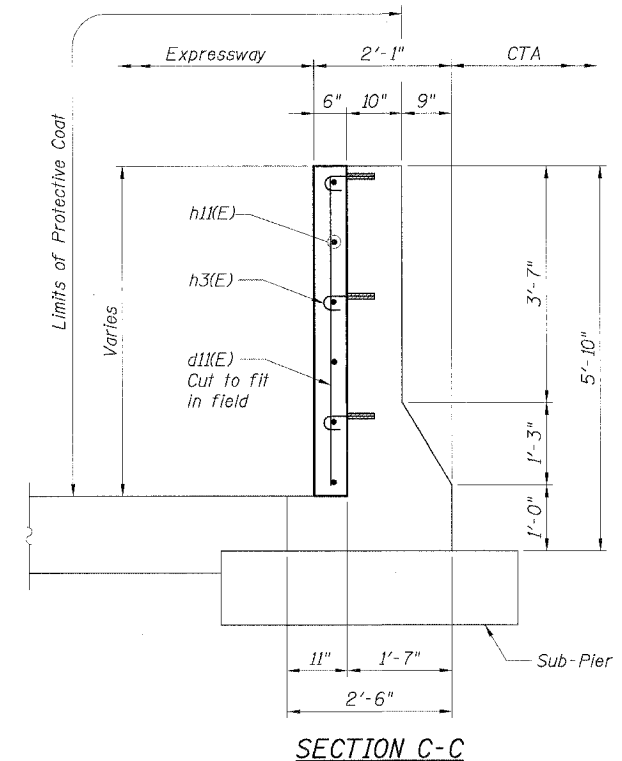
1. Drilling and grouting of #4 h3(E) bars shall be in accordance with Section 584 of the Standard Specifications.
2. The cost of drilling holes, furnishing and placing Epoxy Grout and setting #4 h3(E) bars shall be included in the cost per cubic yard for Concrete Superstructure.
3. Provide joints in facing to match those in the existing barrier. See Sheet B7 for details.
4. For Soldier Pile and Lagging Retention System see Sheets B1, B4 and B5.
5. For Refaced Barrier Wall Details, see Sheet B7.
6. For Existing Concrete Repair Details, see Sheet B3.
7. For Facing Details at Existing Light Pole Foundation, see Sheet B5.
8. For locations of Transition, see Roadway Plans.



SECTION A-A



SECTION B-B



SECTION C-C

CTE | AECOM

REVISIONS	
NAME	DATE
MJP	8-12-05

ILLINOIS DEPARTMENT OF TRANSPORTATION
F.A.I. 90/94 (DAN RYAN EXPRESSWAY)
71ST STREET TO 31ST STREET (SB EXPRESS LANES)
EXISTING BARRIER WALL MODIFICATIONS
AT CTA STATIONS
FOR 69TH ST. STATION (NB)
VERT. REFACED BARRIER TO PIER
TRANSITION DETAILS (NO TAPER)
SCALE: None DRAWN BY: CHD
DATE: July 7, 2005 CHECKED BY: RDP

Sheet B13 of 18

9/10/2005 10:23:32 AM