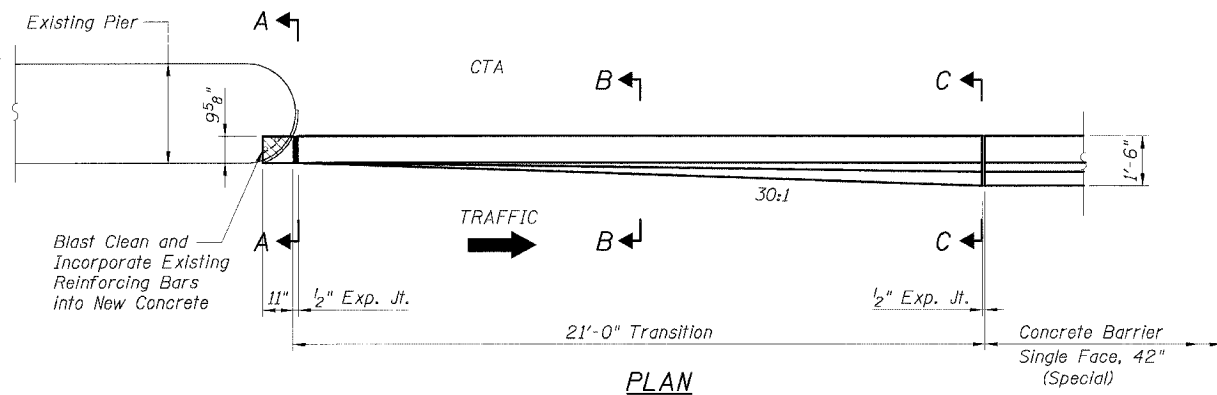


STATE OF ILLINOIS  
DEPARTMENT OF TRANSPORTATION

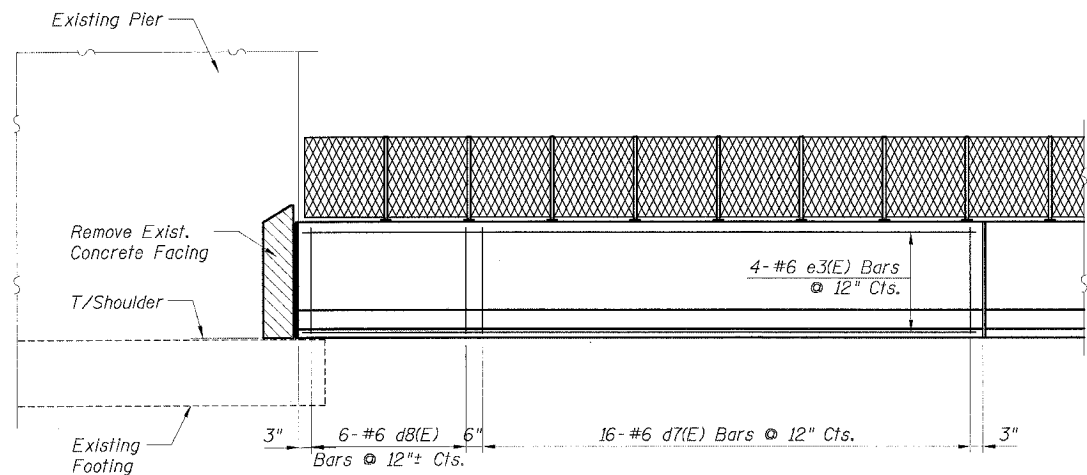
F.A.I. RTE. 90/94	SECTION •	COUNTY COOK	TOTAL SHEETS 598	SHEET NO. 424
STA.		TO STA.		
FED. ROAD DIST. NO. 1 ILLINOIS FED. AID PROJECT				
• (1818, ETC, 2324.6-101R-9 62302				

**BILL OF MATERIAL  
FOR ONE TRANSITION**

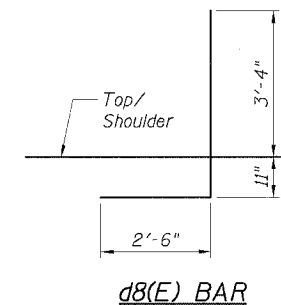
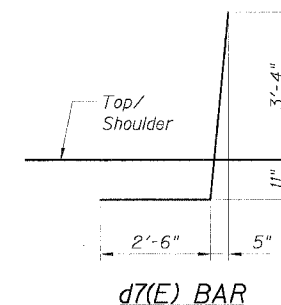
Bar	No.	Size	Length	Shape
a3(E)	3	#5	20'-8"	
d7(E)	15	#6	6'-9"	
d8(E)	5	#6	6'-9"	
e3(E)	4	#6	20'-8"	
Item		Unit	Quantity	
Reinforcement Bars, Epoxy Coated		Pound	392	
Concrete Superstructure		Cu. Yd.	2.6	
Protective Coat		Sq. Yd.	10	
Concrete Removal		Cu. Yd.	0.1	



PLAN



ELEVATION

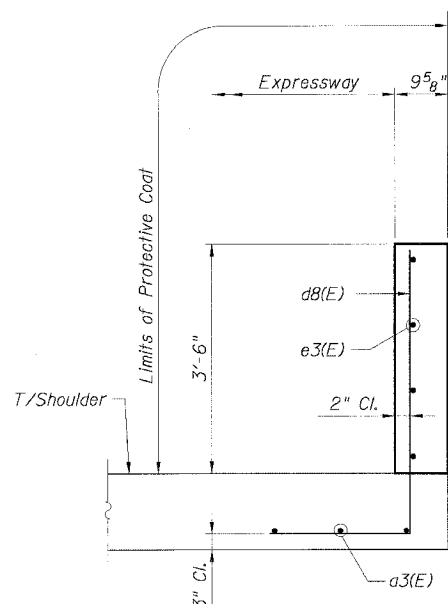


**LEGEND:**

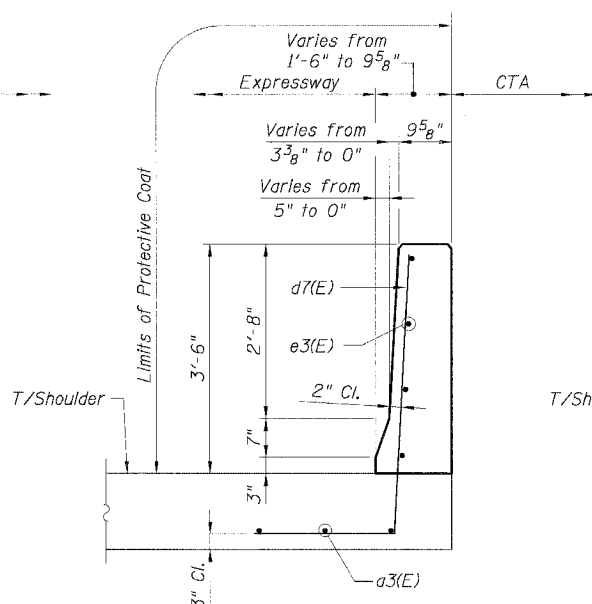
Concrete Removal

**NOTES:**

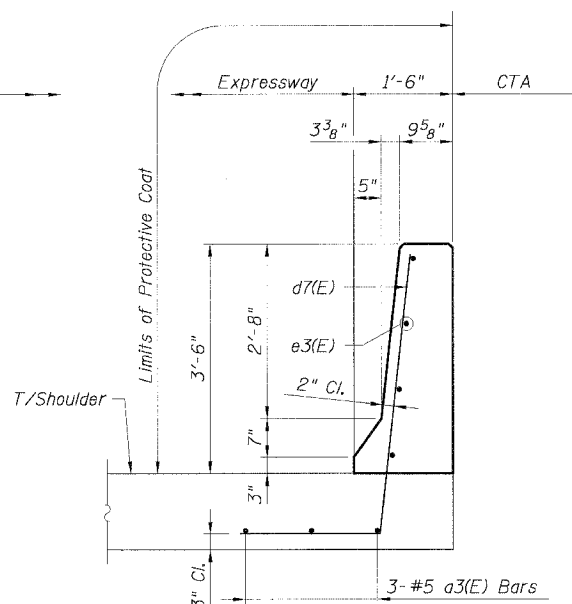
- For Expansion Joint Details see Sheet B6.
- For alternative vertical reinforcing details see "Concrete Barrier Single Face, 42" Alternatives".
- For Concrete Barrier Single Face, 42" (Special), see Roadway details.
- For locations of Transition, see Roadway Plans.



SECTION A-A



SECTION B-B



SECTION C-C

CTE | AECOM

REVISIONS	
NAME	DATE
MJP	8-12-05

Sheet B16 of 18

ILLINOIS DEPARTMENT OF TRANSPORTATION  
F.A.I. 90/94 (DAN RYAN EXPRESSWAY)  
71ST STREET TO 31ST STREET (SB EXPRESS LANES)  
EXISTING BARRIER WALL MODIFICATIONS  
AT CTA STATIONS  
PROP. T/SOULDER ABOVE OR BELOW EXISTING  
NEW 42" BARRIER TO PIER  
TRANSITION DETAILS

SCALE: None DRAWN BY: CHD  
DATE: July 7, 2005 CHECKED BY: RDP