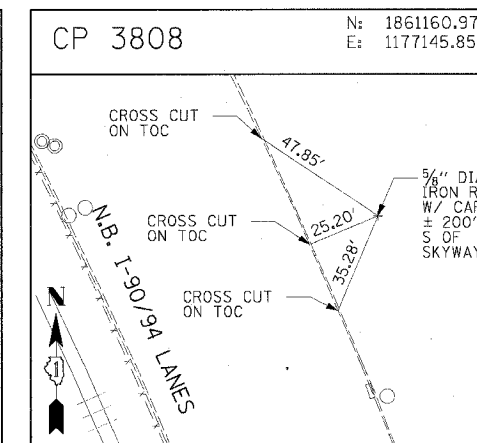
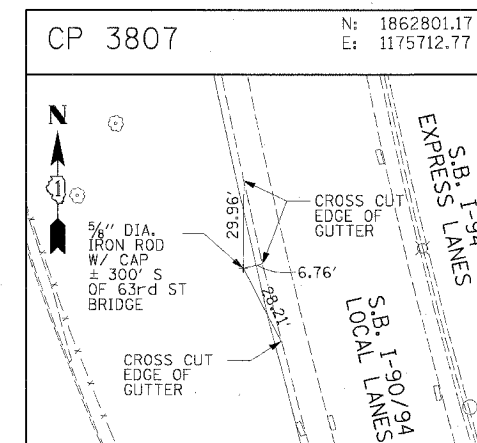
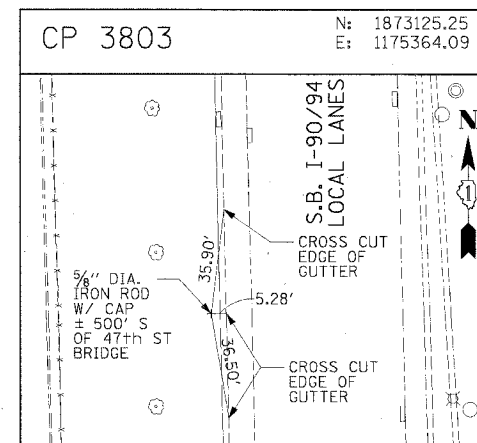
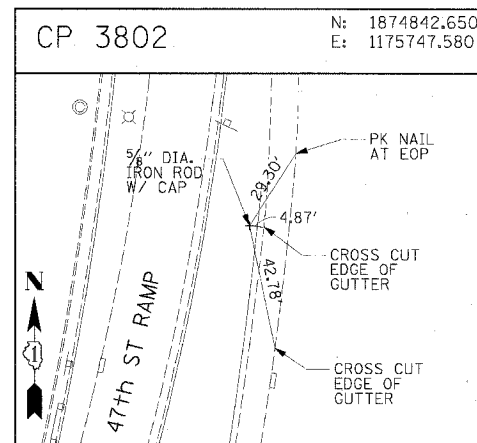
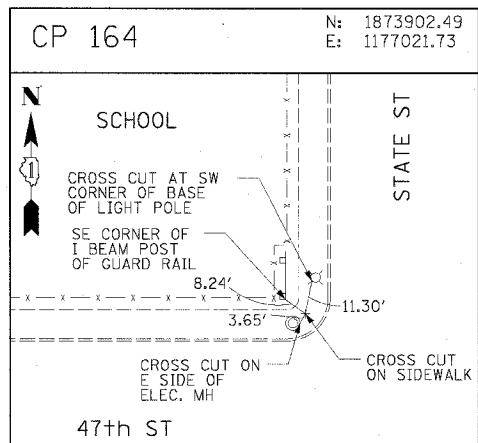
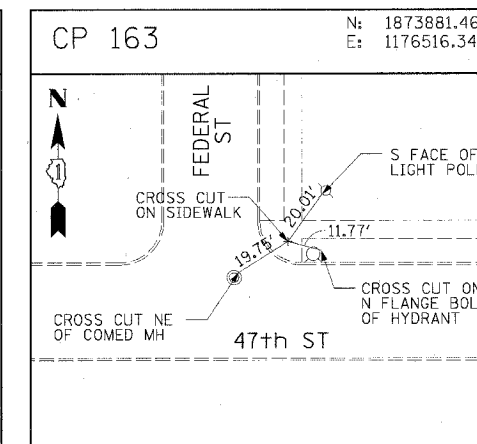
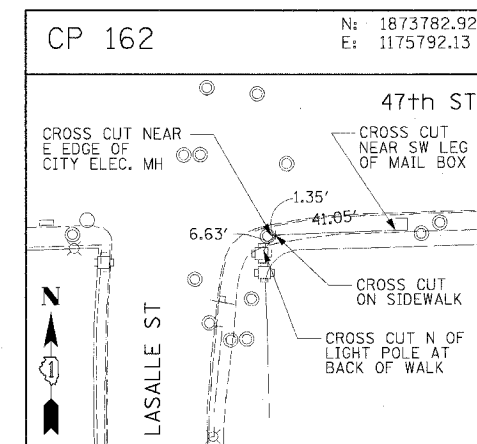
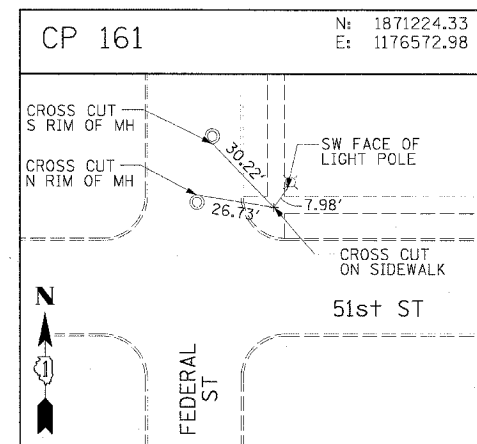
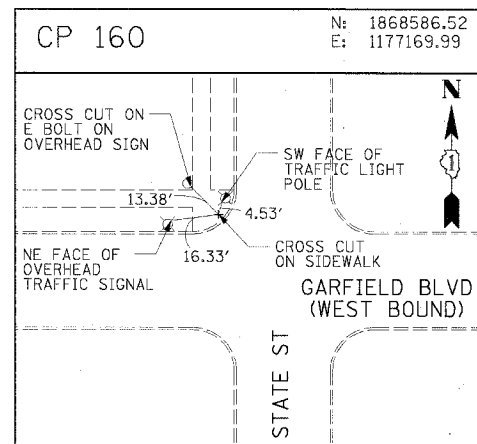
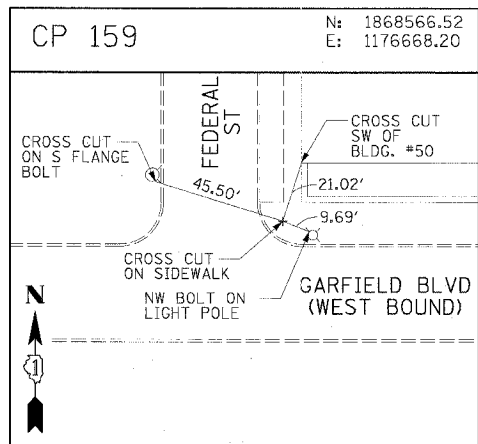
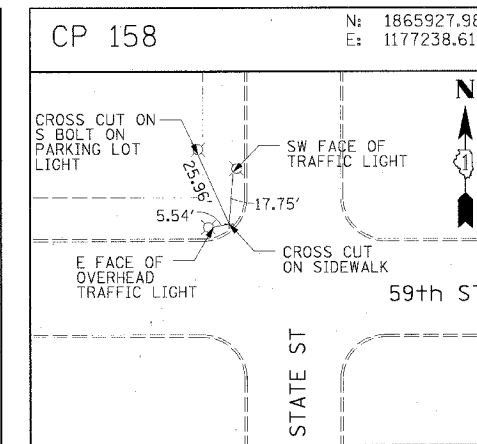
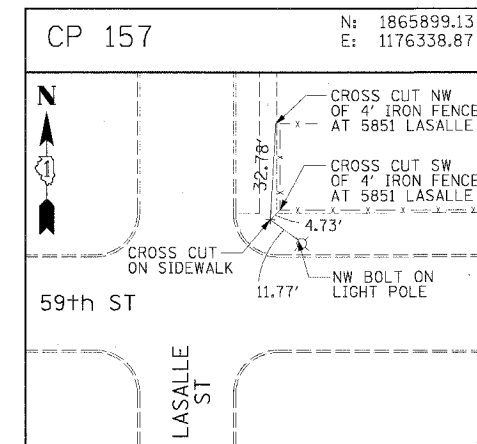
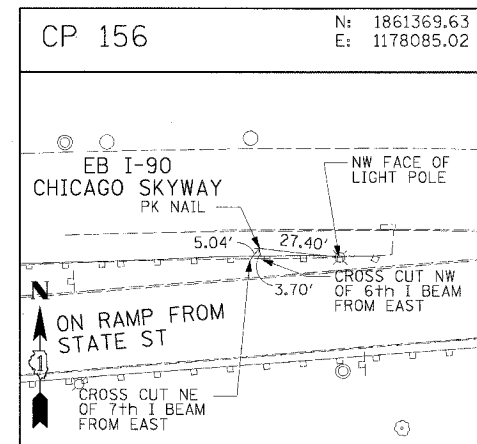
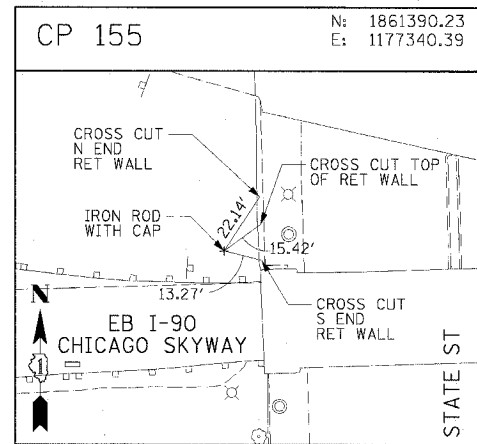
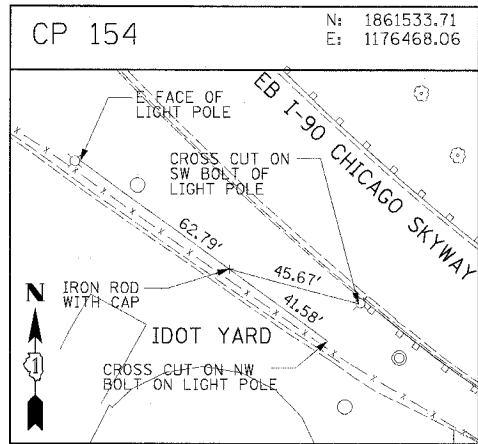


F.A.I. RTE.	SECTION	COUNTY	TOTAL SHEETS	SHEET NO.
90/94		COOK	598	45
STA.		TO STA.		
FED. ROAD DIST. NO. 1		ILLINOIS FED. AID PROJECT		
(1818, ETC, 2324.6-10R-9		62302		



CTE | AECOM

REVISIONS	
NAME	DATE

ILLINOIS DEPARTMENT OF TRANSPORTATION  
F.A.I. 90/94 (DAN RYAN EXPRESSWAY)  
71ST STREET TO 31ST STREET (SB EXPRESS LANES)  
SURVEY TIES AND CONTROL POINTS

SCALE: 1"=30'  
DATE: 7/7/05

DRAWN BY: MRK  
CHECKED BY: JAL

P:\030090303\CON\148\5\CAD\VISUAL\50002A.dwg 06/24/2005 09:27 AM