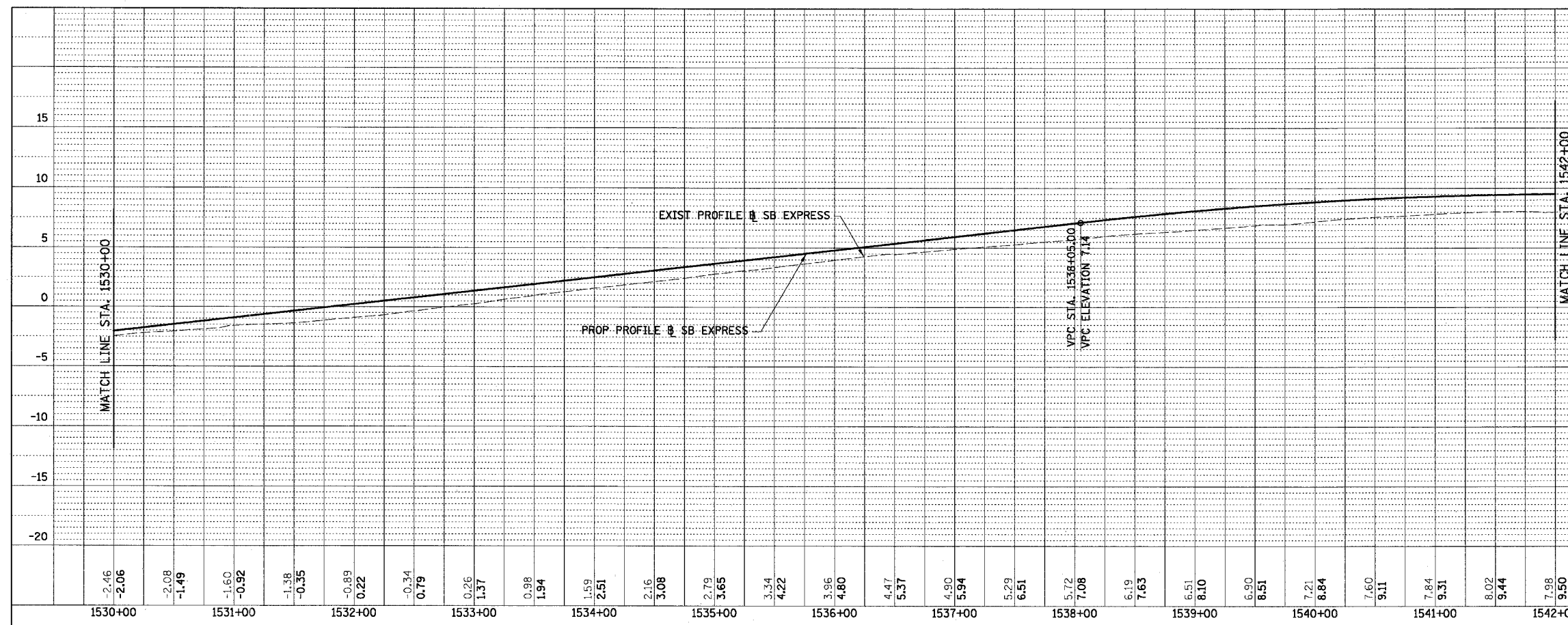
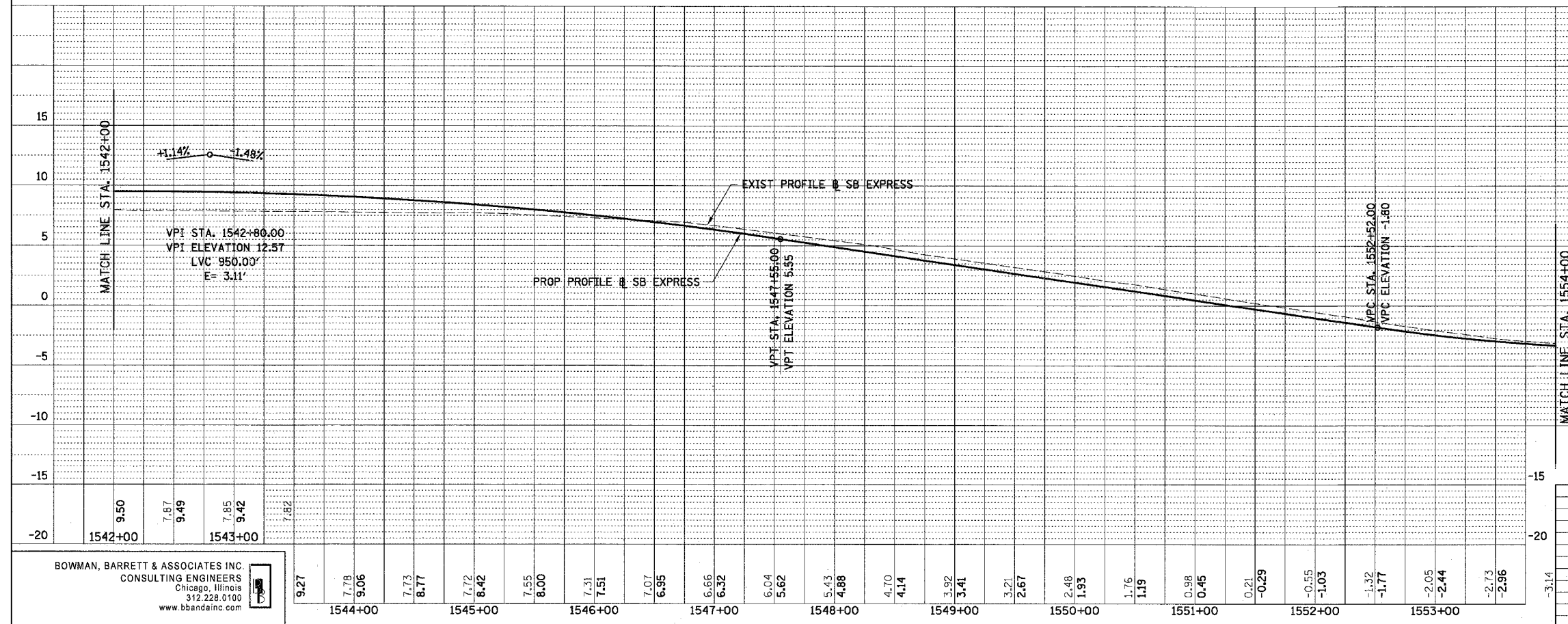


F.A.I.	SECTION	COUNTY	TOTAL SHEETS	SHEET NO.
94/90	*	COOK	598	77
STA. 1530+00		TO STA. 1554+00		
FED. ROAD DIST. NO.		ILLINOIS FED. AID PROJECT		

PLAN	REVISIONS	DATE
NO.	NO.	
NO.	NO.	
NO.	NO.	



PLAN	REVISIONS	DATE
NO.	NO.	
NO.	NO.	
NO.	NO.	



REVISIONS	DATE
NAME	

ILLINOIS DEPARTMENT OF TRANSPORTATION  
 F.A.I. 94/90 (DAN RYAN EXPRESSWAY)  
 31ST STREET TO 71ST STREET  
 SB EXPRESS LANE RECONSTRUCTION  
 EXISTING AND PROPOSED PROFILE  
 SOUTHBOUND STA. 1530+00 TO STA. 1554+00  
 SCALE: 1"=25' VERT  
 1"=50' HORIZ  
 DATE: 07/07/05  
 DRAWN BY: RA  
 CHECKED BY: KR

BOWMAN, BARRETT & ASSOCIATES INC.  
 CONSULTING ENGINEERS  
 Chicago, Illinois  
 312.228.0100  
 www.bbainc.com

PRO-7

6/24/2005 3:47:16 PM