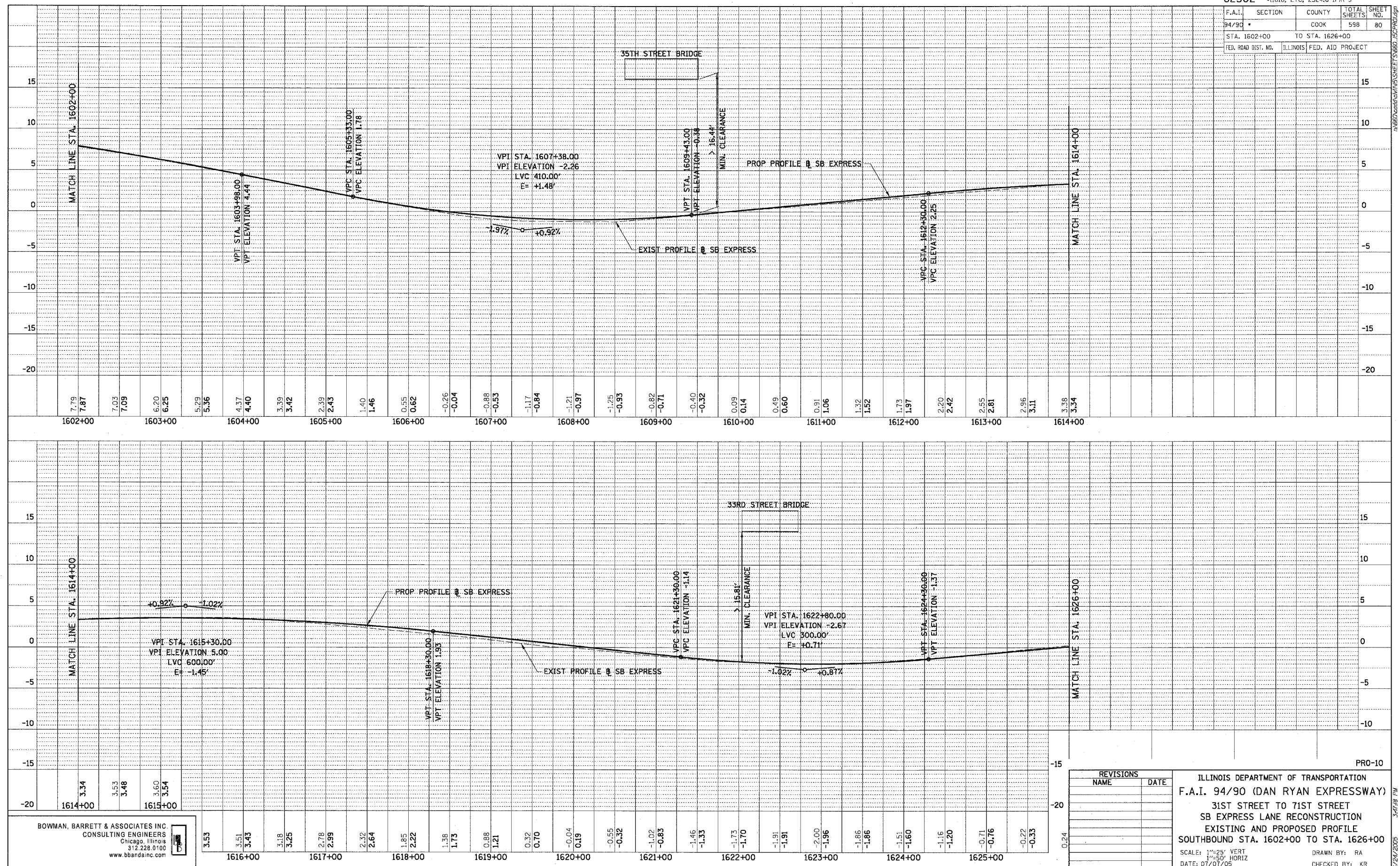


F.A.I.	SECTION	COUNTY	TOTAL SHEETS	SHEET NO.
94/90	*	COOK	598	80
STA. 1602+00		TO STA. 1626+00		
FED. ROAD DIST. NO.	ILLINOIS	FED. AID PROJECT		

PLAN	REVISIONS	DATE
NO. 1	BY	
NO. 2	BY	
NO. 3	BY	
NO. 4	BY	
NO. 5	BY	

PLAN	REVISIONS	DATE
NO. 1	BY	
NO. 2	BY	
NO. 3	BY	
NO. 4	BY	
NO. 5	BY	



BOWMAN, BARRETT & ASSOCIATES INC.
CONSULTING ENGINEERS
Chicago, Illinois
312.228.0100
www.bbainc.com

REVISIONS	DATE
NAME	

ILLINOIS DEPARTMENT OF TRANSPORTATION
F.A.I. 94/90 (DAN RYAN EXPRESSWAY)
31ST STREET TO 71ST STREET
SB EXPRESS LANE RECONSTRUCTION
EXISTING AND PROPOSED PROFILE
SOUTHBOUND STA. 1602+00 TO STA. 1626+00
SCALE: 1"=25' VERT
1"=50' HORIZ
DATE: 07/07/05
DRAWN BY: RA
CHECKED BY: KR