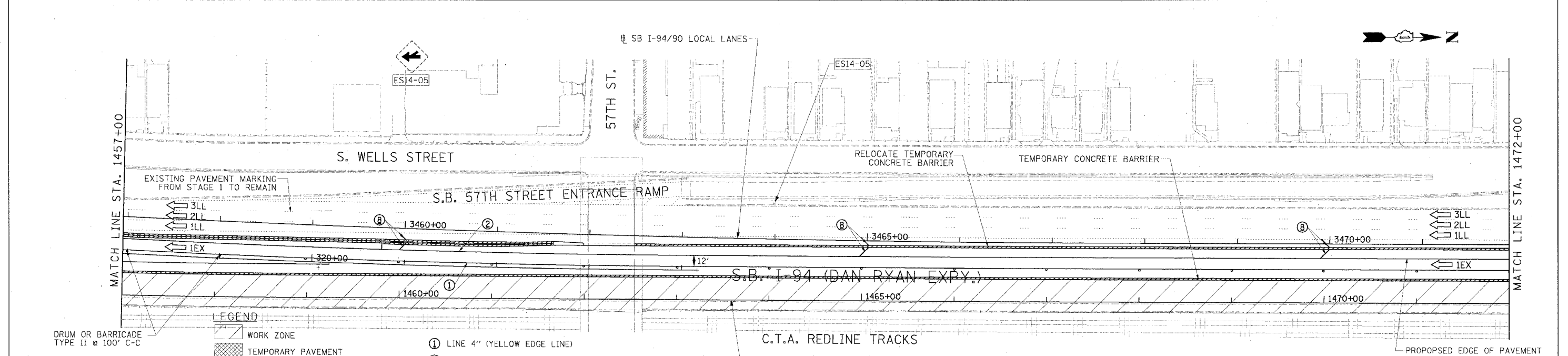
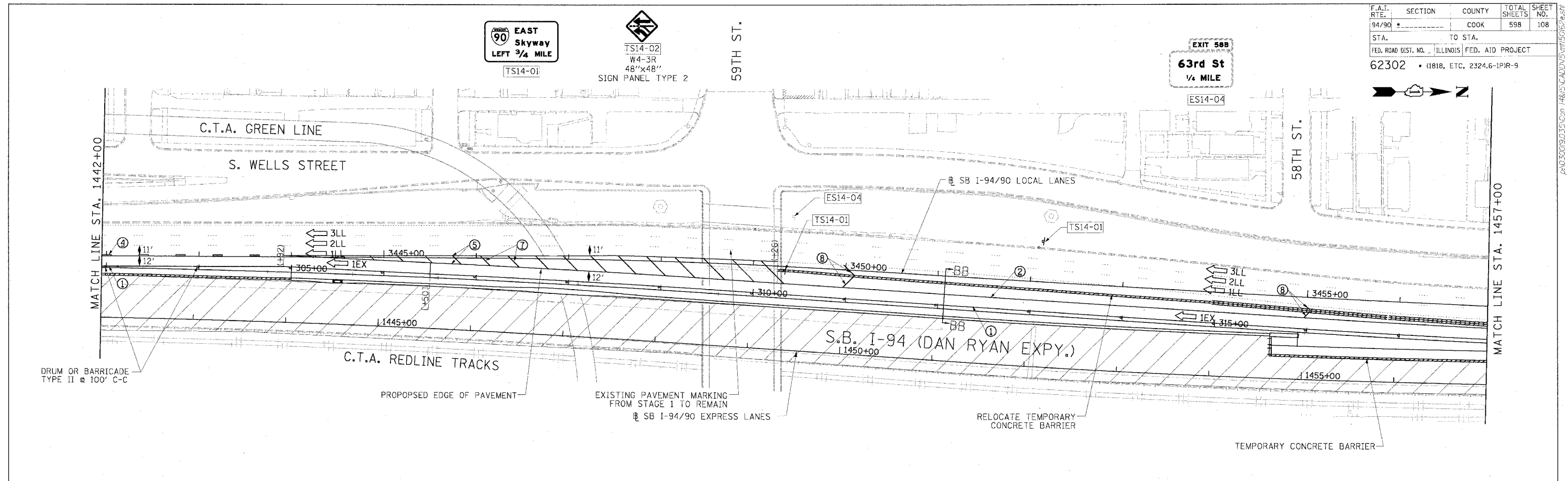


F.A.I. RTE.	SECTION	COUNTY	TOTAL SHEETS	SHEET NO.
94/90		COOK	598	108
STA.	TO STA.			
62302	1818, ETC. 2324.6-1P/R-9			



**LEGEND**

- WORK ZONE
  - TEMPORARY PAVEMENT
  - TRAFFIC LANE & DIRECTION OF TRAFFIC
  - DRUM OR BARRICADE TYPE II WITH STEADY BURN LIGHT
  - IMPACT ATTENUATORS, TEMPORARY (NON-REDIRECTIVE), TEST LEVEL 3
  - BARRICADE TYPE III
  - TEMPORARY CONCRETE BARRIER
  - EXISTING SIGN
  - TEMPORARY SIGN
- ① LINE 4" (YELLOW EDGE LINE)
  - ② LINE 4" (WHITE EDGE LINE)
  - ③ LINE 4" (SKIP DASH, 6' SKIP - 2' DASH, WHITE)
  - ④ LINE 5" (SKIP DASH, 30' SKIP - 10' DASH, WHITE)
  - ⑤ LINE 8" (WHITE CORE LINE)
  - ⑥ LINE 8" (SKIP DASH, 12' SKIP - 3' DASH, WHITE)
  - ⑦ LINE 12" (DIAGONAL, 30' C-C)
  - ⑧ LINE 12" (DIAGONAL, 500' C-C)
  - ⑨ LETTERS AND SYMBOLS

**STATIONING**

+++ STATION PROVIDED FROM THE SB I-90/94 EXPRESS LANES

(+\*\*) STATION PROVIDED FROM THE SB I-90/94 LOCAL LANES

**NOTE:**  
ALL PAVEMENT MARKINGS ON THIS SHEET ARE PAVEMENT MARKING TAPE, TYPE III UNLESS OTHERWISE NOTED.

REVISIONS	
NAME	DATE

ILLINOIS DEPARTMENT OF TRANSPORTATION  
F.A.I. 94/90 (DAN RYAN EXPRESSWAY)  
31ST STREET TO 71ST STREET  
SB EXPRESS LANE RECONSTRUCTION  
MAINTENANCE OF TRAFFIC PLAN  
SOUTHBOUND STA. 1442+00 TO STA. 1472+00  
STAGE 2

SCALE: 1"=50'  
DATE: 7/1/05

DRAWN BY: TAI  
CHECKED BY: PJM

**Edwards AND Kelcey**  
ONE NORTH FRANKLIN  
CHICAGO, IL 60606  
PHONE: (312) 251-3000  
FAX: (312) 251-3015  
WEB: WWW.EKCORP.COM

P:\030019\030019.dwg 148\15 CAD\JMS\148150162.dwg 08/24/2005 09:45:47 AM