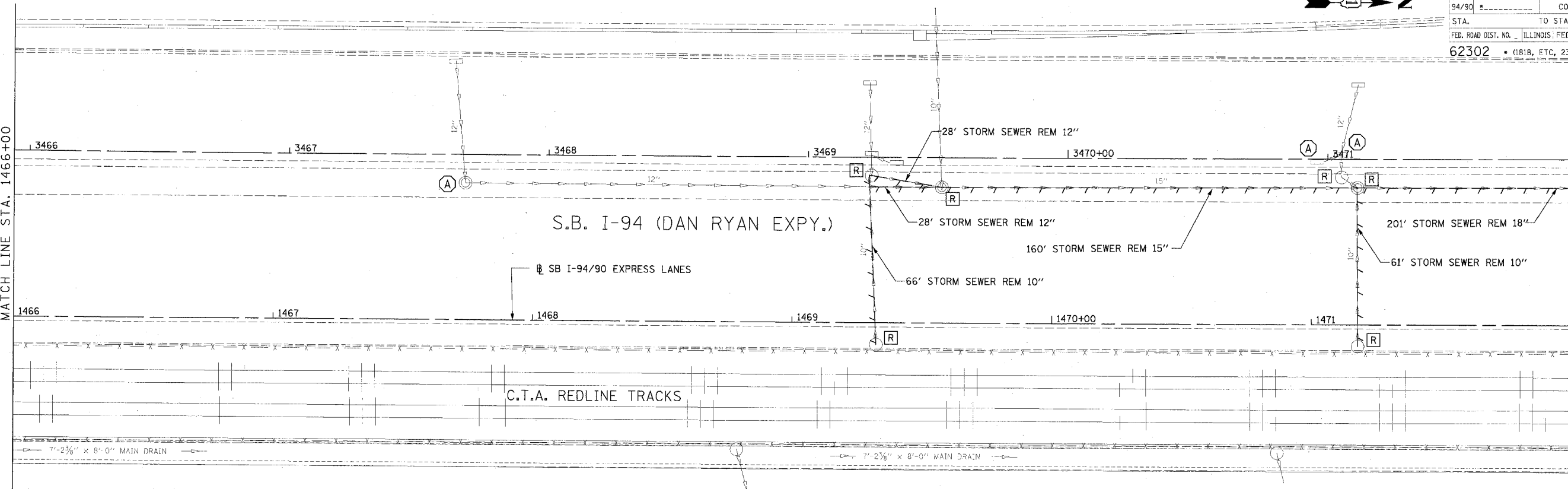


F.A.I. RTE. 94/90	SECTION	COUNTY COOK	TOTAL SHEETS 598	SHEET NO. 181
STA. 1466+00		TO STA. 1472+00		
FED. ROAD DIST. NO. ILLINOIS FED. AID PROJECT 62302 • (1818, ETC, 2324.6-1)PR-9				

MATCH LINE STA. 1466+00

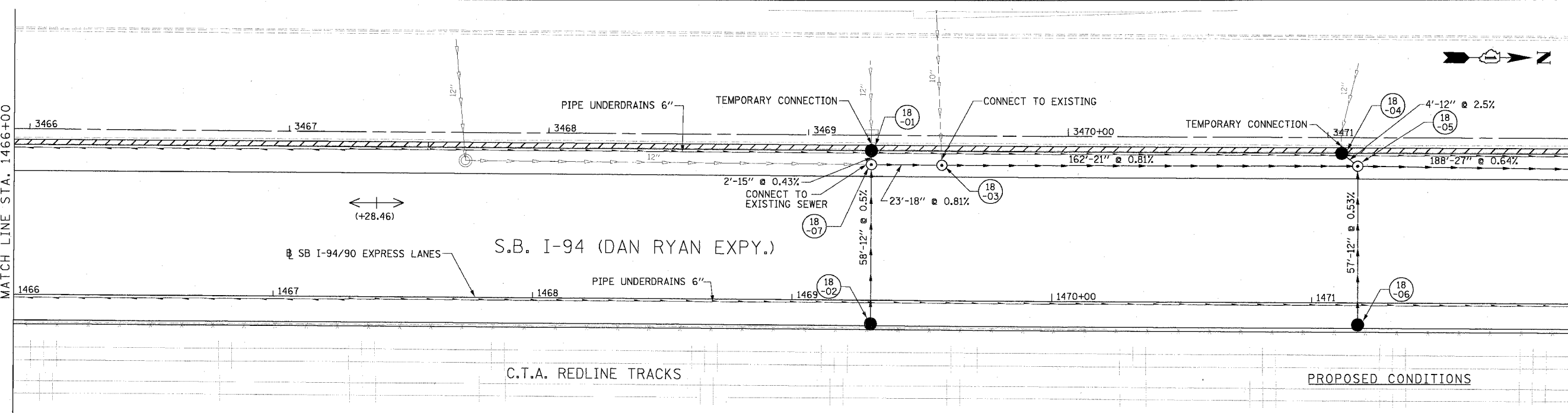
MATCH LINE STA. 1472+00



EXISTING CONDITIONS AND REMOVALS

MATCH LINE STA. 1466+00

MATCH LINE STA. 1472+00



PROPOSED CONDITIONS

DU-18

REVISIONS	
NAME	DATE

ILLINOIS DEPARTMENT OF TRANSPORTATION
 F.A.I. 94/90 (DAN RYAN EXPRESSWAY)
 31ST STREET TO 71ST STREET
 SB EXPRESS LANE RECONSTRUCTION
 DRAINAGE AND UTILITIES PLAN
 SOUTHBOUND STA. 1466+00 TO STA. 1472+00
 SCALE: 0' 10' 20' 30' 40' 1"=20'
 DATE: 7/7/05 DRAWN BY: LPN CHECKED BY: PJM

Edwards AND Kelcey
 ONE NORTH FRANKLIN
 CHICAGO, IL 60606
 PHONE: (312) 251-3000
 FAX: (312) 251-3015
 WEB: WWW.EKCORP.COM

06/24/2005 02:21:32 PM