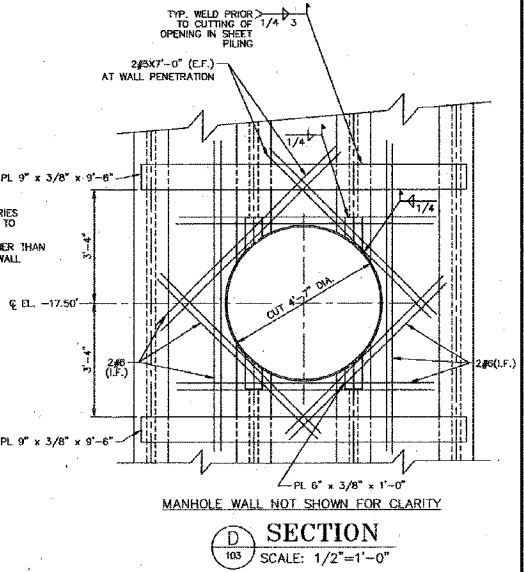
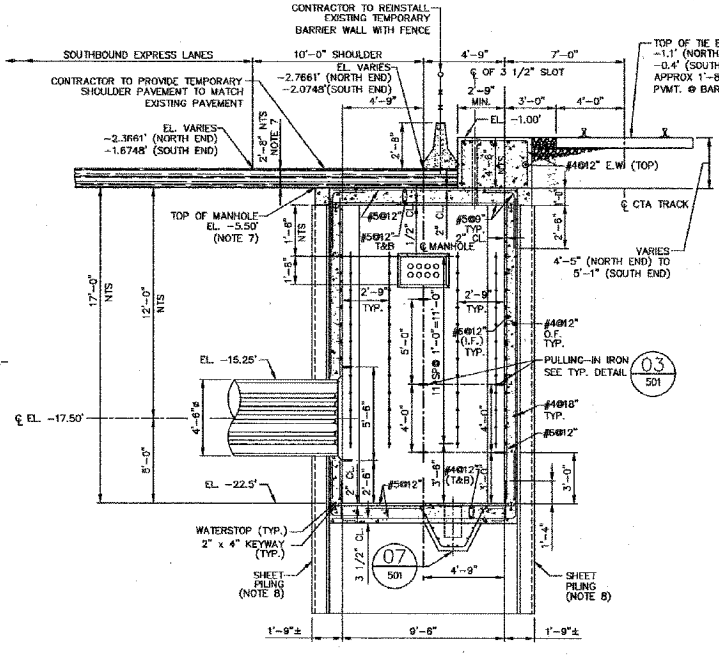
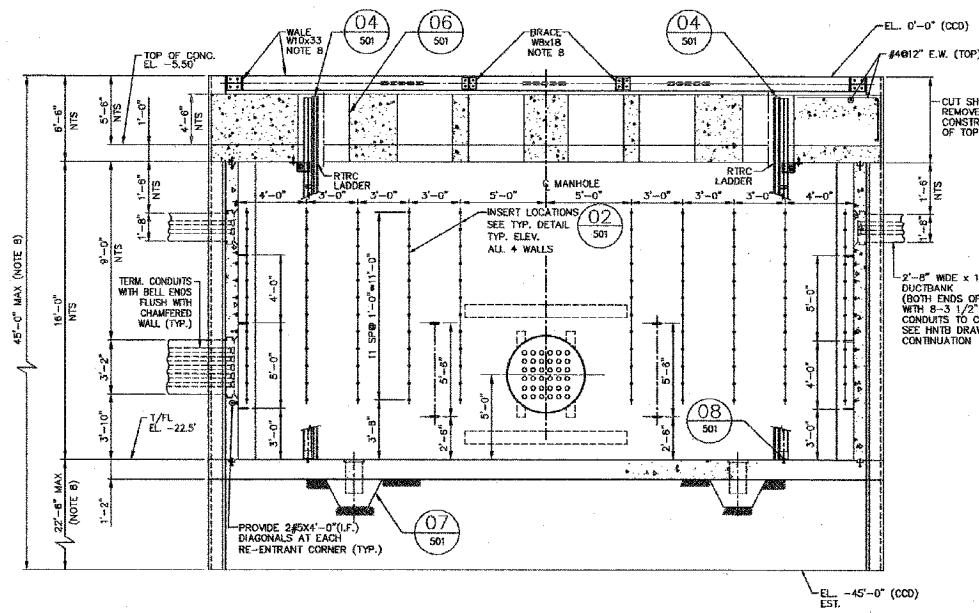
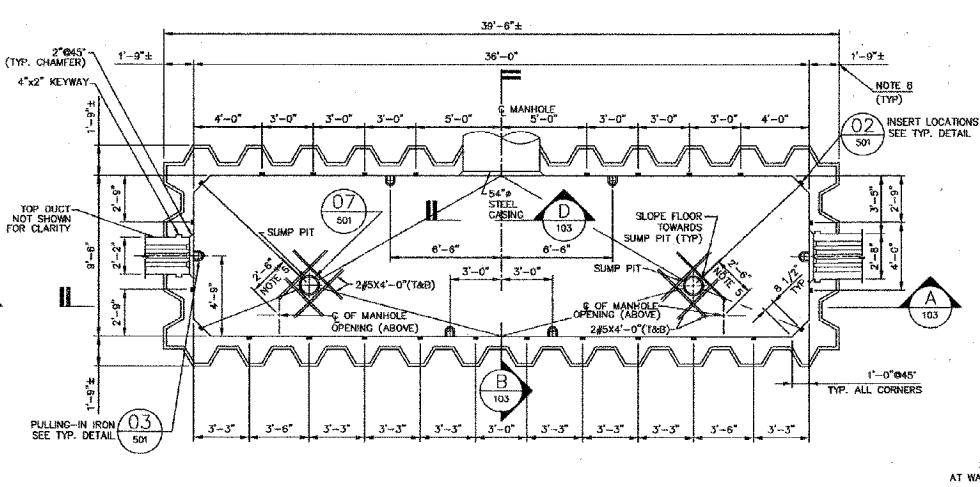
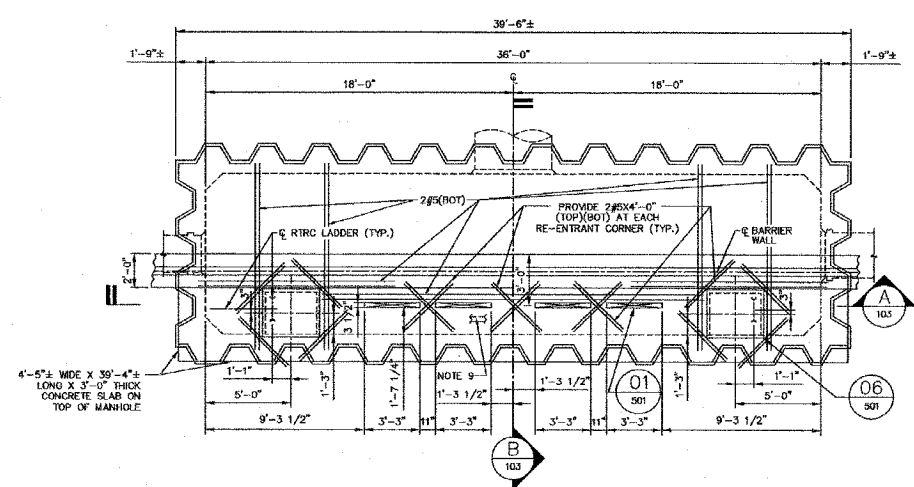


F.A.I.	SECTION	COUNTY	TOTAL SHEETS	SHEET NO.
94/90		COOK	598	259
STA.	TO STA.			
FED. ROAD DIST. NO.	ILLINOIS FED. AID PROJECT			
62302	*1818, ETC, 2324.6-1PR-9			



- NOTES:
- FOR GENERAL PLAN AND MANHOLE LOCATION SEE DWG. TPPE-101 & TPPE-102.
 - FOR DETAILS OF MANHOLE COMPONENTS SEE DWG. TPPE-501.
 - FOR CABLE RACKING INSIDE MANHOLE SEE DWG. TPPE-105.
 - FOR SWITCH ENCLOSURE ARRANGEMENT AND MOUNTING SEE DWG. TPPE-301.
 - CENTERLINE OF SLUMP PIT SHALL BE LOCATED 2'-0" FROM CENTERLINE OF MANHOLE ON 45°.
 - ALL ELEVATIONS SHOWN ARE CDD (CHICAGO CITY DATUM), ARCH. 0'-0"=15.4' CDD.
 - TO ENSURE MINIMUM SHOULDER PAVEMENT THICKNESS OF 14", 6" BITUMINOUS SUBGRADE AND 12" AGGREGATE SUBGRADE ON TOP OF MANHOLE ON NORTH END IT IS NECESSARY TO SET TOP OF MANHOLE AT EL. -5.50'.
 - SHEET PILING TO BE DESIGNED BY CONTRACTOR AND SIGNED AND SEALED BY A REGISTERED STRUCTURAL ENGINEER FOR CDD'S APPROVAL PRIOR TO CONSTRUCTION. DESIGN SHALL INCLUDE LATERAL PRESSURE CAUSED BY ADJACENT CTA TRACKS AND HIGHWAY TRAFFIC PATTERN AND SIZE OF WALLS AND BRACES TO BE DESIGNED BY CONTRACTOR.
 - CONTRACTOR SHALL DESIGN 4" MIN. DEEP SHEAR KEYWAY BETWEEN TOP MANHOLE SLAB AND 4"-8" THICK CONCRETE SLAB VERTICAL EXTENSION, AND SLAB REINFORCEMENT WITH RESPECT TO FORCES LISTED IN NOTE 6 ABOVE.

In Charge: HS
 Designed By: DP
 Drawn By: ND
 Checked By: DP
 Approved By: HS

LDP Consulting Engineers
 Laramore, Douglass And Popham, Inc.
 IN ASSOCIATION WITH
 Rubino & Media Engineers, Inc.
 Architects • Engineers • Construction Management
 Environmental Design International
 Collaborative Engineering Corporation
 Ground Engineering Consultants

No.	Date	Revision	App'd
1	05-27-03	ISSUED FOR BIDS	HS



Chicago Transit Authority
 Engineering Department

SUBSTATION ENHANCEMENT DAN RYAN-RED LINE
 PE, 42, 50, PR & 79

PERSHING SUBSTATION
 MEDIAN GETAWAY MANHOLE-STRUCTURAL

Scale: AS NOTED Date: 05-27-03 J.O. No.:

Sheet No. TPPE-103 of

BOWMAN, BARRETT & ASSOCIATES INC.
 CONSULTING ENGINEERS
 Chicago, Illinois
 312.228.0100
 www.bbainc.com

FOR INFORMATION ONLY

REVISIONS	NAME	DATE

ILLINOIS DEPARTMENT OF TRANSPORTATION
 F.A.I. 94/90 (DAN RYAN EXPRESSWAY)
 31ST STREET TO 71ST STREET
 SB EXPRESS LANE RECONSTRUCTION
 CTA PERSHING
 SUBSTATION PLANS

SCALE: NTS DRAWN BY: BDC
 DATE: 07/07/05 CHECKED BY: JDC