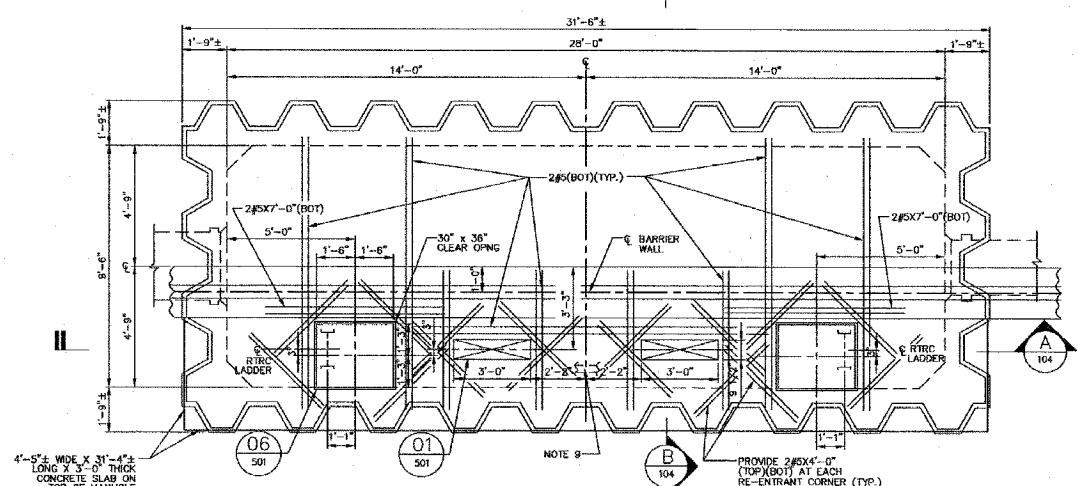
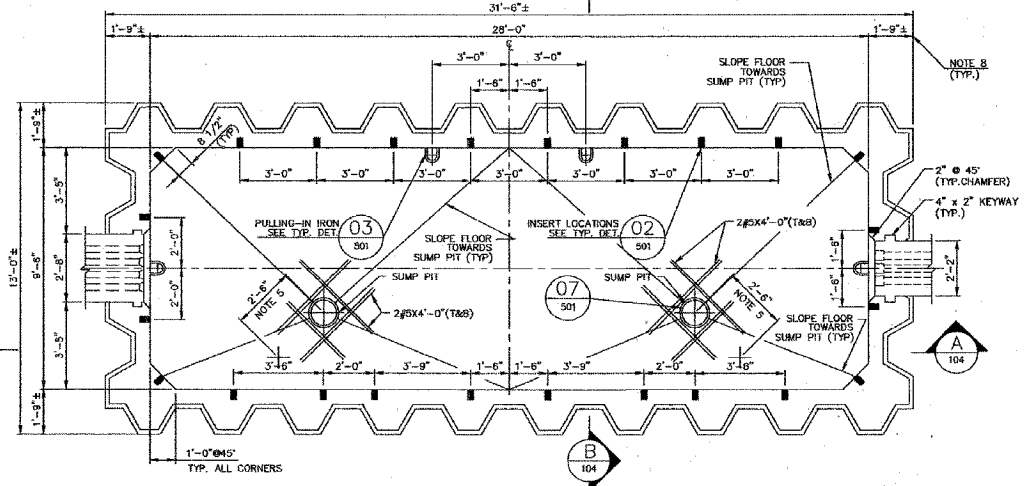


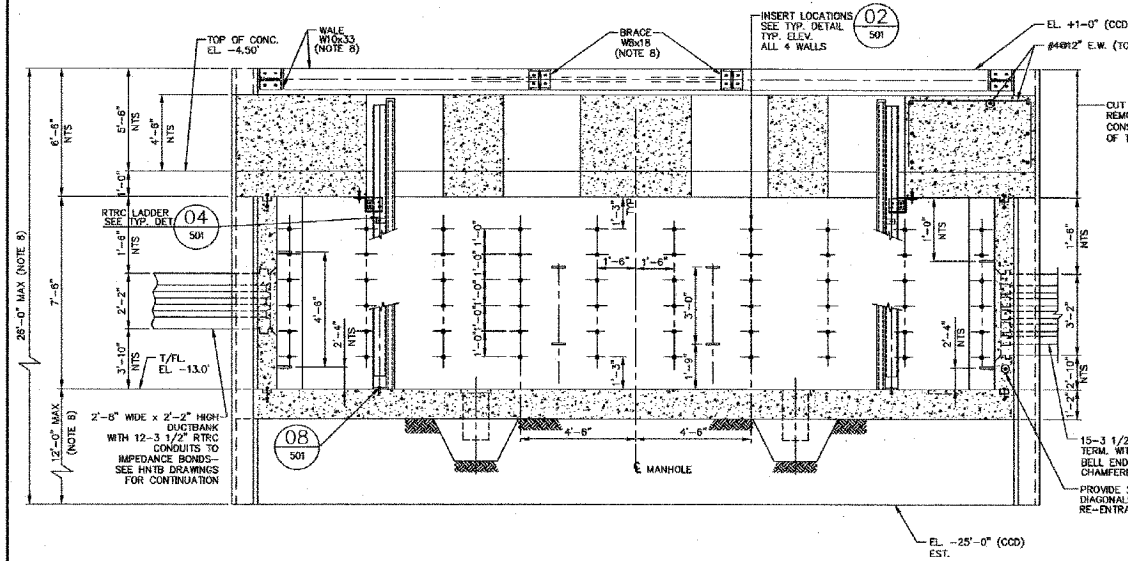
F.A.I.	SECTION	COUNTY	TOTAL SHEETS	SHEET NO.
94/90	*	COOK	598	260
STA.	TO STA.			
FED. ROAD DIST. NO.	ILLINOIS FED. AID PROJECT			
62302	*1818, ETC, 2324.6-1PR-9			



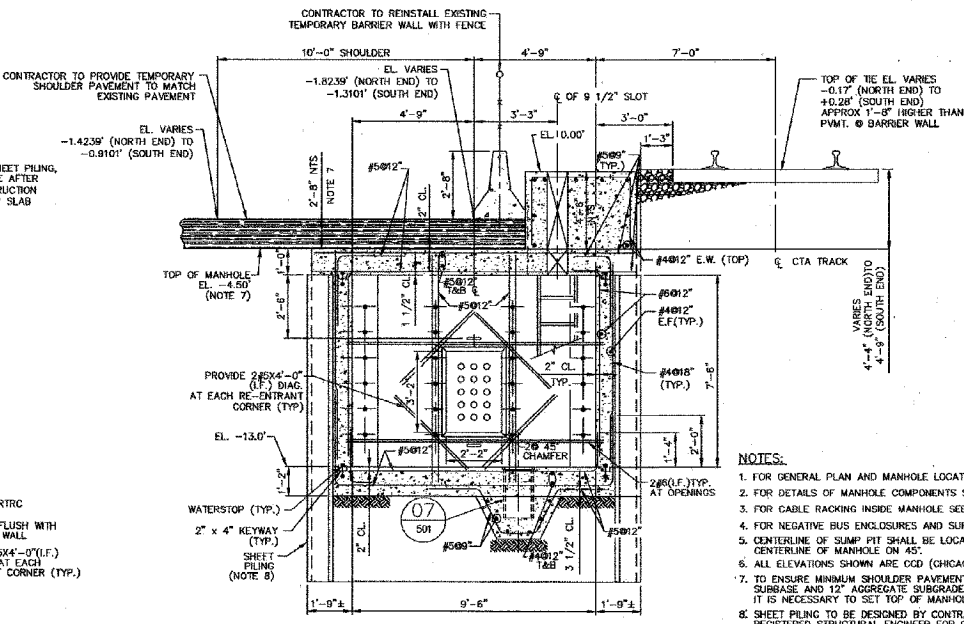
MANHOLE-TOP PLAN (TPPE-101 & 102)
SCALE: 3/8"=1'-0"



MANHOLE-FLOOR PLAN
SCALE: 3/8"=1'-0"



SECTION A
SCALE: 3/8"=1'-0"



SECTION B
SCALE: 3/8"=1'-0"

- NOTES:**
- FOR GENERAL PLAN AND MANHOLE LOCATION SEE DWG. TPPE-101 & TPPE-102.
 - FOR DETAILS OF MANHOLE COMPONENTS SEE DWG. TPPE-501.
 - FOR CABLE RACKING INSIDE MANHOLE SEE DWG. TPPE-106.
 - FOR NEGATIVE BUS ENCLOSURES AND SUPPORT SEE DWG. TPPE-302.
 - CENTERLINE OF SUMP PIT SHALL BE LOCATED 2'-6" FROM CENTERLINE OF MANHOLE ON 45°.
 - ALL ELEVATIONS SHOWN ARE CDD (CHICAGO CITY DATUM), ARCL 0'-0"-15.4' CDD.
 - TO ENSURE MINIMUM SHOULDER PAVEMENT THICKNESS OF 14", 6" BITUMINOUS SUBBASE AND 12" AGGREGATE SUBGRADE ON TOP OF MANHOLE ON NORTH END IT IS NECESSARY TO SET TOP OF MANHOLE AT EL. -4.50'.
 - SHEET PILING TO BE DESIGNED BY CONTRACTOR AND SIGNED AND SEALED BY A REGISTERED STRUCTURAL ENGINEER FOR CDD'S APPROVAL PRIOR TO CONSTRUCTION. DESIGN SHALL INCLUDE LATERAL PRESSURE CAUSED BY ADJACENT CTA TRACKS AND HIGHWAY TRAFFIC. PATTERN AND SIZE OF WALERS AND BRACES TO BE DESIGNED BY CONTRACTOR.
 - CONTRACTOR SHALL DESIGN 4" MIN. DEEP SHEAR KEYWAY BETWEEN TOP MANHOLE SLAB AND 4"-4" THICK CONCRETE SLAB VERTICAL EXTENSION, AND SLAB REINFORCEMENT WITH RESPECT TO FORCES LISTED IN NOTE 8 ABOVE.

In Charge	HS
Designed By	DP
Drawn By	ND
Checked By	MA
Approved By	HS

LDP
Laramore, Douglass And Popham, Inc.
Consulting Engineers
IN ASSOCIATION WITH
Rubins & Meigs Engineers, Inc.
Architecture • Engineering • Construction Management
Environmental Design International
Geotechnical Engineering Corporation
Ground Engineering Consultants

No.	Date	Revision	App'd
1	05-27-03	ISSUED FOR BIDS	HS

Chicago Transit Authority
Engineering Department
cta

SUBSTATION ENHANCEMENT DAN RYAN-RED LINE
PE, 42, 50, PR & 79
PERSHING SUBSTATION
MEDIAN NEGATIVE MANHOLE-STRUCTURAL
Scale: AS NOTED Date: 05-27-03 J.O. No.:

Sheet No.
TPPE-104
of

BOWMAN, BARRETT & ASSOCIATES INC.
CONSULTING ENGINEERS
Chicago, Illinois
312.228.0100
www.bbainc.com

FOR INFORMATION ONLY

REVISIONS	NAME	DATE

ILLINOIS DEPARTMENT OF TRANSPORTATION
F.A.I. 94/90 (DAN RYAN EXPRESSWAY)
31ST STREET TO 71ST STREET
SB EXPRESS LANE RECONSTRUCTION
CTA PERSHING
SUBSTATION PLANS
SCALE: NTS DRAWN BY: BDC
DATE: 07/07/05 CHECKED BY: JDC