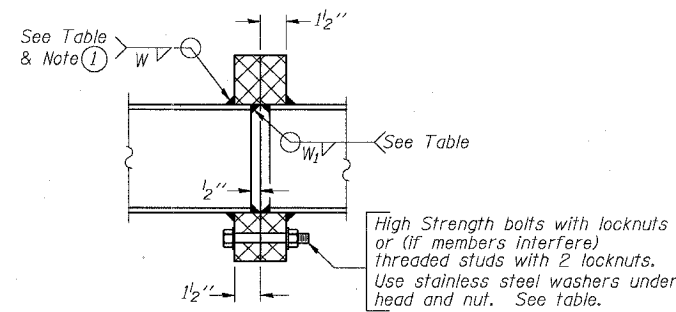


STATE OF ILLINOIS  
DEPARTMENT OF TRANSPORTATION

TRUSS UNIT TABLE

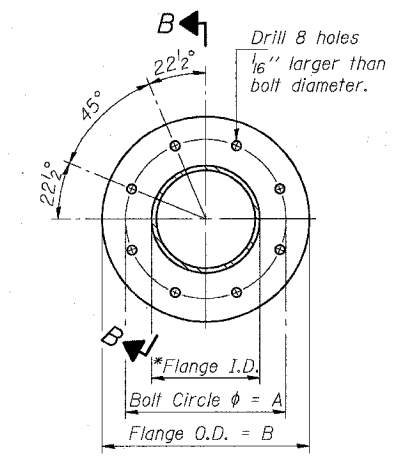
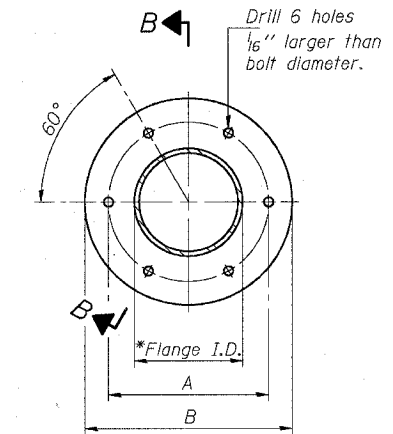
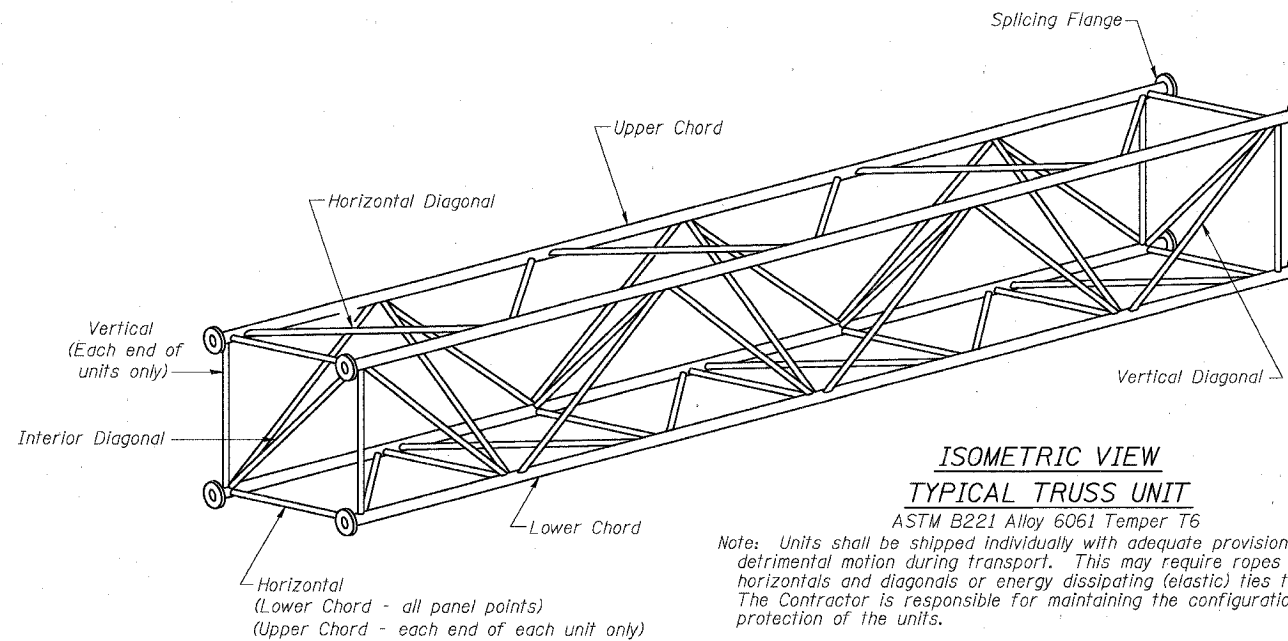
Structure Number	Station	Design Truss Type	Exterior Units (2)			Interior Unit				Upper & Lower Chord		Verticals; Horizontals; Vertical, Horizontal, and Interior Diagonals		Camber at Midspan	Splicing Flange					
			No. Panels per Unit	Unit Lgth.(L <sub>e</sub> )	Panel Lgth.(P)	No. Req'd.	No. Panels per Unit	Unit Lgth.(L <sub>i</sub> )	Panel Lgth.(P)	O.D.	Wall	O.D.	Wall		Bolts		Weld Sizes		A	B
															No./Splice	Dia.	W	W <sub>i</sub>		
ISO161094R056.32	3550+87.27	I-A	8	39'-5"	4'-8 <sup>5</sup> / <sub>16</sub> "	-	-	-	-	5"	5 <sup>1</sup> / <sub>16</sub> "	2 <sup>1</sup> / <sub>2</sub> "	5 <sup>1</sup> / <sub>16</sub> "	2.10"	6	7 <sup>1</sup> / <sub>8</sub> "	5 <sup>1</sup> / <sub>16</sub> "	1/4"	8 <sup>3</sup> / <sub>4</sub> "	11 <sup>3</sup> / <sub>4</sub> "
ISO161094R055.83	3576+87.34	I-A	7	35'-8 <sup>1</sup> / <sub>2</sub> "	4'-10"	-	-	-	-	5"	1/4"	2 <sup>1</sup> / <sub>2</sub> "	1/4"	1.73"	6	7 <sup>1</sup> / <sub>8</sub> "	5 <sup>1</sup> / <sub>16</sub> "	1/4"	8 <sup>3</sup> / <sub>4</sub> "	11 <sup>3</sup> / <sub>4</sub> "
ISO161094R055.64	3586+80	III-A	7	35'-8 <sup>1</sup> / <sub>2</sub> "	4'-10"	-	-	-	-	7"	5 <sup>1</sup> / <sub>16</sub> "	3 <sup>1</sup> / <sub>4</sub> "	5 <sup>1</sup> / <sub>16</sub> "	1.73"	6	1"	7 <sup>1</sup> / <sub>16</sub> "	5 <sup>1</sup> / <sub>16</sub> "	11 <sup>1</sup> / <sub>2</sub> "	15"
ISO161094R055.33	3603+12.34	I-A	7	35'-8 <sup>1</sup> / <sub>2</sub> "	4'-10"	-	-	-	-	5"	1/4"	2 <sup>1</sup> / <sub>2</sub> "	1/4"	1.73"	6	7 <sup>1</sup> / <sub>8</sub> "	5 <sup>1</sup> / <sub>16</sub> "	1/4"	8 <sup>3</sup> / <sub>4</sub> "	11 <sup>3</sup> / <sub>4</sub> "

ROUTE NO.	SECTION	COUNTY	TOTAL SHEETS	SHEET NO.
94/90	*	COOK	598	309
FED. ROAD DIST. NO. 1		ILLINOIS	FED. AID PROJECT	
62302 *11B18, ETC. 2324.6-1P1R-9				



SECTION B-B

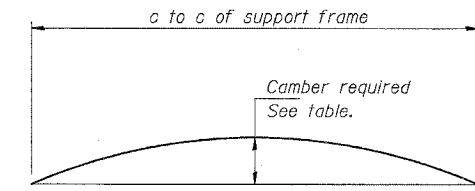
① Splicing Flanges shall be attached to each truss unit with the truss shop assembled to camber shown. Truss units shall be in proper alignment and flange surfaces shall be shop bolted into full contact before welding. Sufficient external welds or tacks shall be made to secure flanges until remaining welds are made after disassembly. Adjacent flanges shall be "match marked" to insure proper field assembly.



TRUSS TYPES II-A & III-A

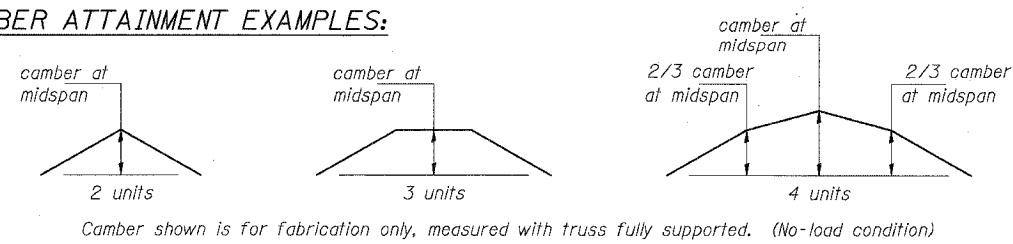
SPLICING FLANGES

ASTM B221, Alloy 6061-T6 or ASTM B209, Alloy 6061-T651  
\*To fit O.D. of Chord with maximum gap of 1/16".



CAMBER DIAGRAM

CAMBER ATTAINMENT EXAMPLES:



NUMBER	REVISION	DATE

DESIGNED MSA	20
CHECKED AS	EXAMINED
DRAWN MD	PASSED
CHECKED MSA	ENGINEER OF BRIDGES AND STRUCTURES

OVERHEAD SIGN STRUCTURES  
ALUMINUM TRUSS DETAILS  
FOR TRUSS TYPES I-A, II-A and III-A

ILLINOIS DEPARTMENT OF TRANSPORTATION  
F.A.I. 94/90 (DAN RYAN EXPRESSWAY)  
31ST STREET TO 71ST STREET  
SB EXPRESS LANE RECONSTRUCTION  
OVERHEAD SIGN STRUCTURES