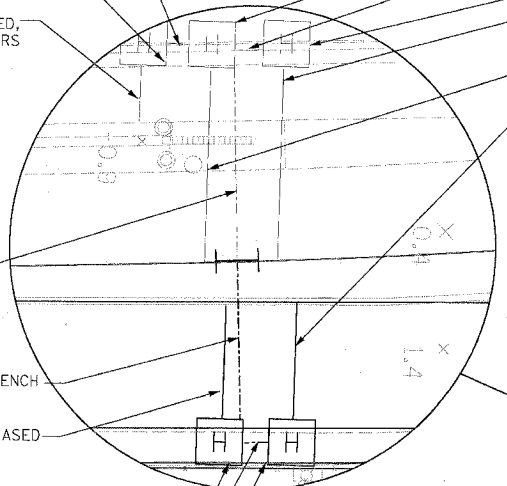
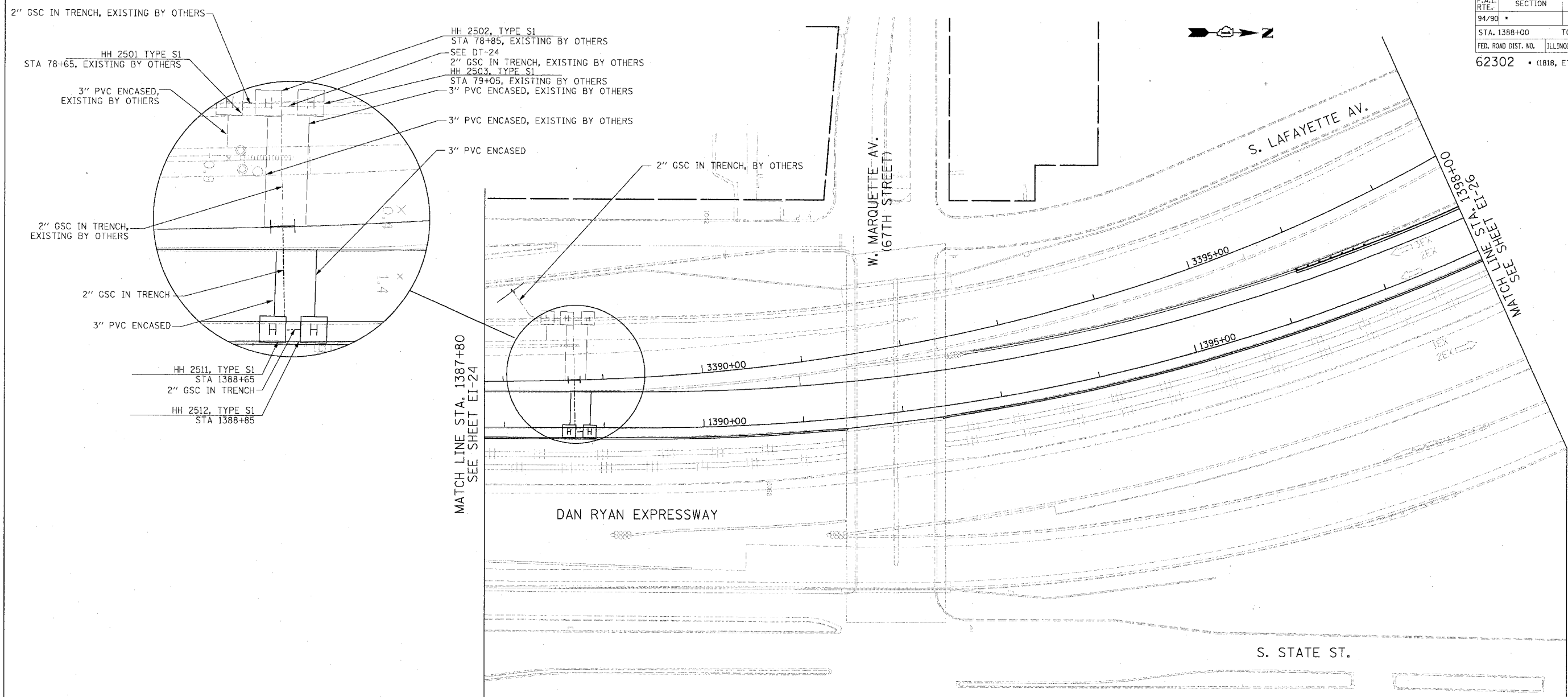


F.A.I. RTE.	SECTION	COUNTY	TOTAL SHEETS	SHEET NO.
94/90	*	COOK	598	359
STA. 1388+00		TO STA. 1398+00		
FED. ROAD DIST. NO.		ILLINOIS FED. AID PROJECT		
62302		* (1818, ETC, 2324.6-1)PR-9		



- 2" GSC IN TRENCH, EXISTING BY OTHERS
- HH 2501 TYPE S1 STA 78+65, EXISTING BY OTHERS
- 3" PVC ENCASED, EXISTING BY OTHERS
- 2" GSC IN TRENCH, EXISTING BY OTHERS
- 2" GSC IN TRENCH
- 3" PVC ENCASED
- HH 2511, TYPE S1 STA 1388+65
- 2" GSC IN TRENCH
- HH 2512, TYPE S1 STA 1388+85
- HH 2502, TYPE S1 STA 78+85, EXISTING BY OTHERS
- SEE DT-24
- 2" GSC IN TRENCH, EXISTING BY OTHERS
- HH 2503, TYPE S1 STA 79+05, EXISTING BY OTHERS
- 3" PVC ENCASED, EXISTING BY OTHERS
- 3" PVC ENCASED, EXISTING BY OTHERS
- 3" PVC ENCASED
- 2" GSC IN TRENCH, BY OTHERS

MATCH LINE STA. 1387+80  
SEE SHEET EI-24

MATCH LINE STA. 1398+00  
SEE SHEET EI-26

- NOTES:
- SEE DRAWING EI-100 AND EI-101 FOR ELECTRICAL SYSTEMS AND ABBREVIATIONS.
  - UNLESS OTHERWISE STATED, ALL NOTED CABLE TO BE FURNISHED AND INSTALLED UNDER ANOTHER CONTRACT.
  - TRENCHED CONDUITS INSTALLED IN PARALLEL ARE TO BE INSTALLED IN COMMON TRENCH.
  - THIS SHEET ONLY DEPICTS INSTALLATION OF DETECTION/RAMP METER ELEMENTS. REFER TO SHEETS FOR OTHER SUBSYSTEMS FOR ADDITIONAL ELEMENTS IN THE AREA SHOWN.
  - DETECTOR LOOPS INSTALLED BY OTHERS.
  - REFER TO HANDHOLE DETAILS. SEE DRAWING DT-29.



EI-25

**Edwards AND Kelcey**  
 ONE NORTH FRANKLIN  
 CHICAGO, IL 60606  
 PHONE: (312) 251-3000  
 FAX: (312) 251-3015  
 WEB: WWW.EKCORP.COM

REVISIONS	
NAME	DATE

ILLINOIS DEPARTMENT OF TRANSPORTATION  
 F.A.I. 94/90 (DAN RYAN EXPRESSWAY)  
 31ST STREET TO 71ST STREET  
 SB EXPRESS LANE RECONSTRUCTION  
 ELECTRICAL INFRASTRUCTURE PLAN  
 SOUTHBOUND STA. 1387+80 TO 1398+00

SCALE: 1"=50'  
 DATE: 7/7/05

DRAWN BY: CJH  
 CHECKED BY: MJL

I:\Projects\94\90\Drawings\EI-25.dwg  
 06/24/2005 11:58:31 AM