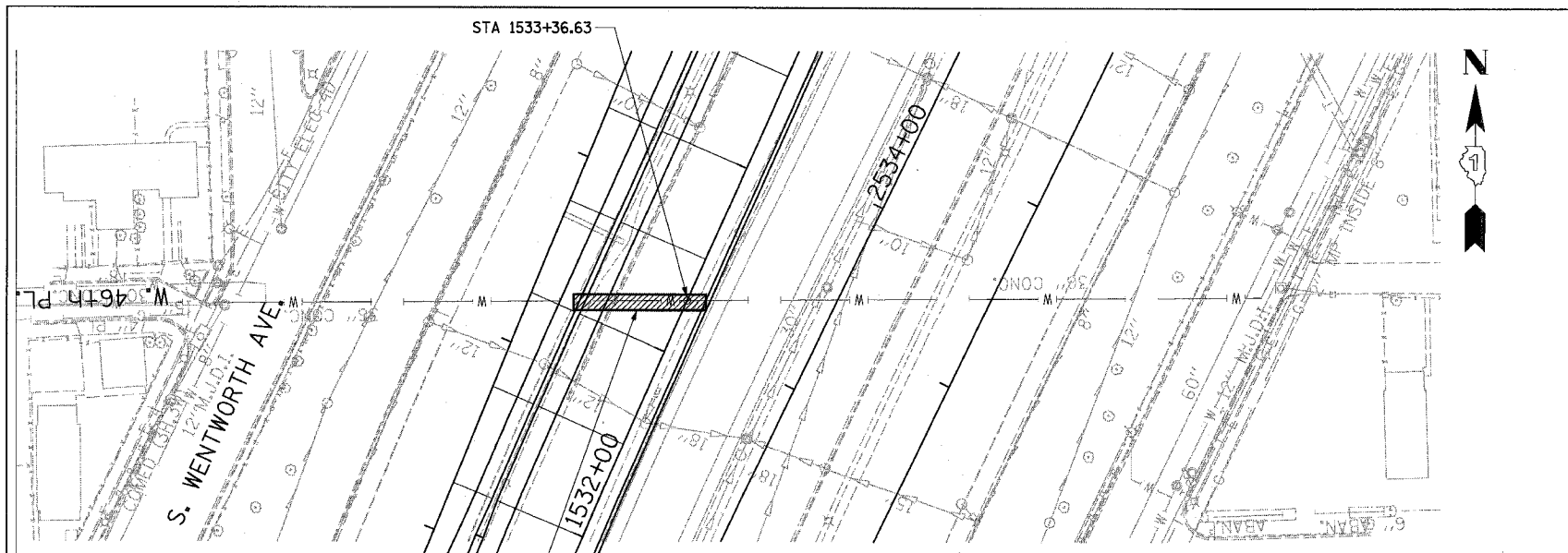


F.A.I.	SECTION	COUNTY	TOTAL SHEETS	SHEET NO.
94/90		COOK	598	390
STA.	TO STA.			
FED. ROAD DIST. NO.	ILLINOIS FED. AID PROJECT			
62302	11818, ETC, 2324.6-1PIR-9			



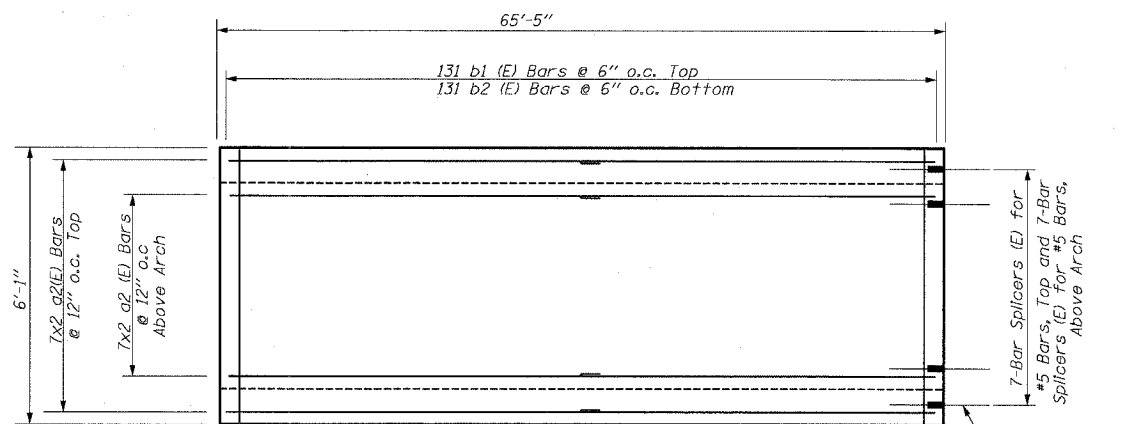
TOPOGRAPHIC PLAN

**BILL OF MATERIAL**

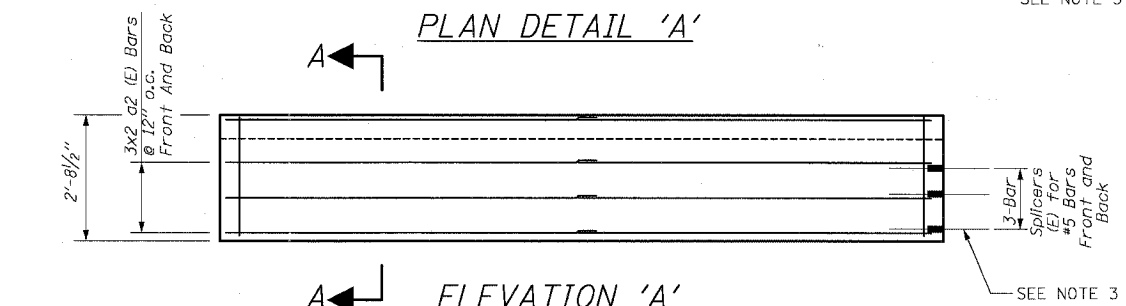
Bar	No.	Size	Length	Shape
a2(E)	40	#5	33'-8"	—
b1(E)	131	#5	10'-4"	⌢
b2(E)	131	#5	10'-3"	⌢
Reinforcement Bars, Epoxy Coated		Pounds	4,260	
Bar Splicers		Each	20	
Concrete Structures		Cu. Yd.	24.0	

**NOTES:**

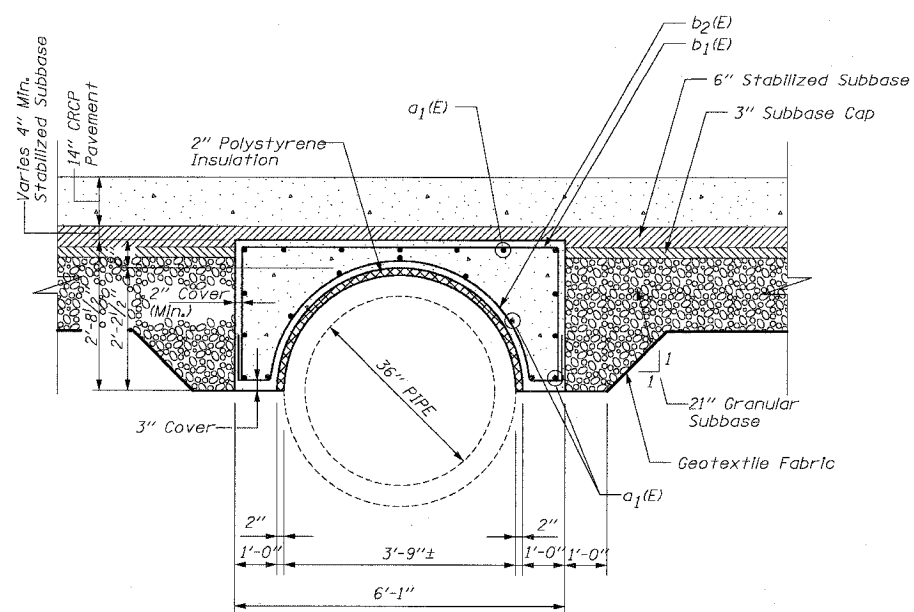
1. THE 2" POLYSTYRENE INSULATION SHALL BE INCLUDED IN THE COST OF 36" WATER MAIN PROTECTION CAP CONSTRUCTION. THE ESTIMATED QUANTITY IS 420 SQ. FT.
2. ADDITIONAL GRANULAR SUB-BASE REQUIRED AS SHOWN IN SECTION A-A OR AS DIRECTED BY ENGINEER WILL BE INCLUDED IN THE COST OF SUB-BASE GRANULAR MATERIAL, TYPE B 24".
3. CONTRACTOR SHALL PROVIDE BAR SPLICERS AS SHOWN. INSTALL STAGE I PORTION AND PROVIDE STAGE II PORTION TO THE ENGINEER. PLUG THREADED COUPLER WITH PLASTIC NIPPLE OR H.S. BOLT FOR PROTECTION. COST INCLUDED WITH "BAR SPLICERS".



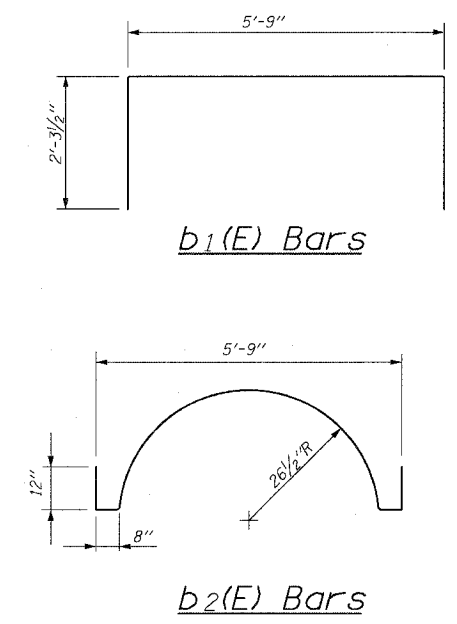
PLAN DETAIL 'A'



ELEVATION 'A'



SECTION A-A



**NOTES:**

1. All bars designated (E) must be epoxy coated.
2. All bars must be #5 bars with a minimum overlap of 2'-2".

BOWMAN, BARRETT & ASSOCIATES INC.  
CONSULTING ENGINEERS  
Chicago, Illinois  
312.228.0100  
www.bbainc.com

REVISIONS	DATE
NAME	

ILLINOIS DEPARTMENT OF TRANSPORTATION  
F.A.I. 94/90 (DAN RYAN EXPRESSWAY)  
31ST STREET TO 71ST STREET  
SB EXPRESS LANE RECONSTRUCTION  
CIVIL DETAILS - 46TH ST CROSSING  
36" WATER MAIN PROTECTION CAP  
SCALE: =NTS DRAWN BY: EGH  
DATE: 07/07/05 CHECKED BY: CBB

CDT-3

5-363.5 PW  
6/27/2005