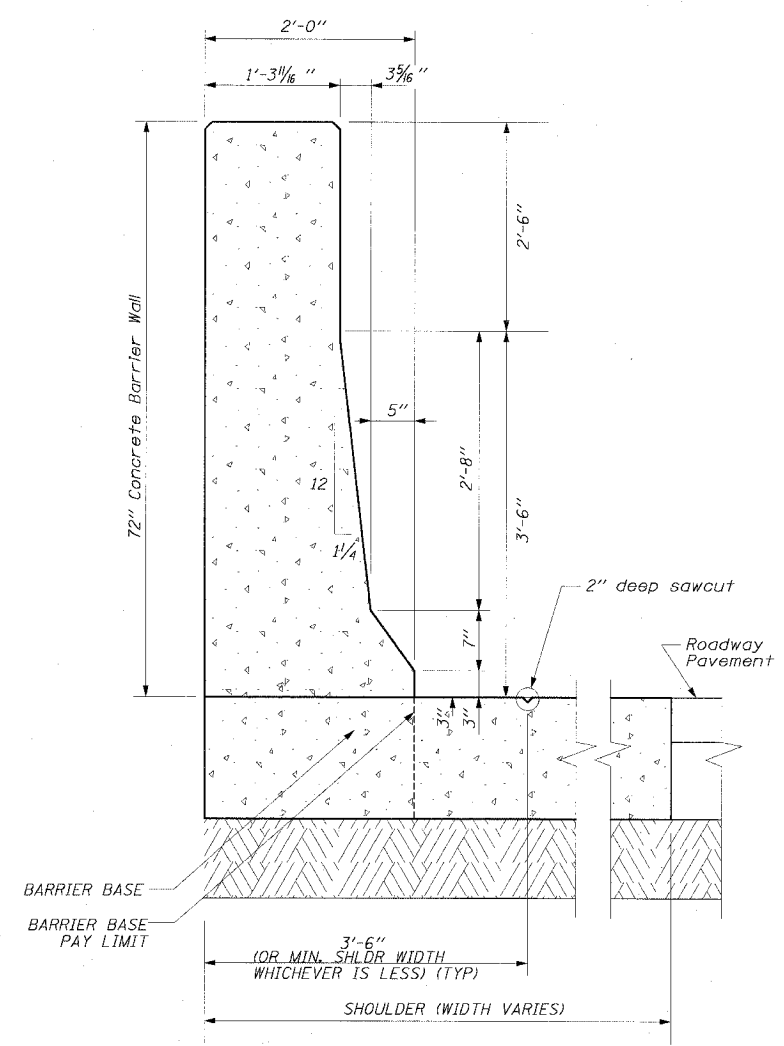
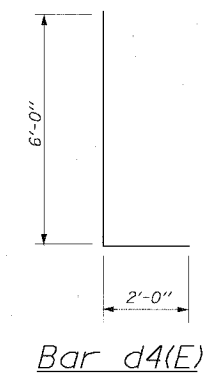
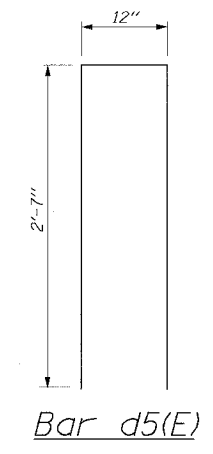
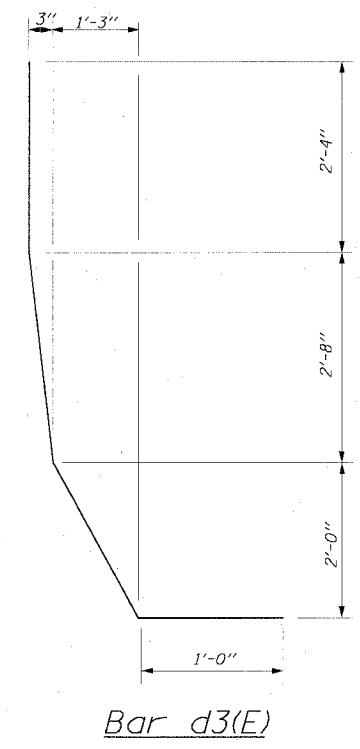
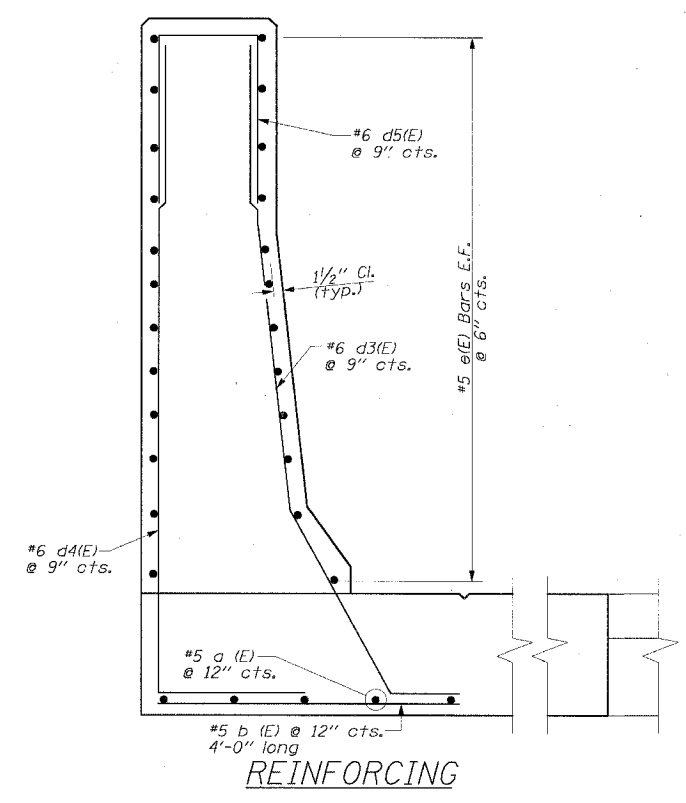


F.A.I. RTE.	SECTION	COUNTY	TOTAL SHEETS	SHEET NO.
94/90		COOK	598	404
STA.		TO STA.		
FED. ROAD DIST. NO.		ILLINOIS FED. AID PROJECT		
62302		(1818, ETC, 2324.6-1PIR-9		



DIMENSIONS



- NOTES:**
1. All reinforcing bars, tie bars and dowel bars shall be seated in the final position prior to the concrete operations. The cost of these items is included in the cost of the barrier wall. Bars cannot be mucked into place.
 2. Maintain slope of face as shown on details.

MIN LAP:
 #5 Bars - 2'-2"
 #6 Bars - 2'-7"
 *Lap varies as necessary

Edwards AND Kelcey
 ONE NORTH FRANKLIN CHICAGO, IL 60606
 PHONE: (312) 251-3000 FAX: (312) 251-3015
 WEB: WWW.EKCORP.COM

REVISIONS	
NAME	DATE

ILLINOIS DEPARTMENT OF TRANSPORTATION
 F.A.I. 94/90 (DAN RYAN EXPRESSWAY)
 31ST STREET TO 71ST STREET
 SB EXPRESS LANE RECONSTRUCTION
 CONCRETE BARRIER,
 SINGLE FACE 72" (SPECIAL)
 SCALE: NOT TO SCALE DRAWN BY: AJW
 DATE: 7/7/05 CHECKED BY: EL

PA03009.035.Con 148/5/CAUDN/5/10/5/04/26.sst