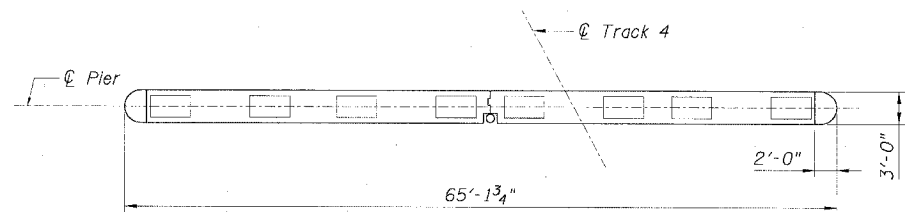
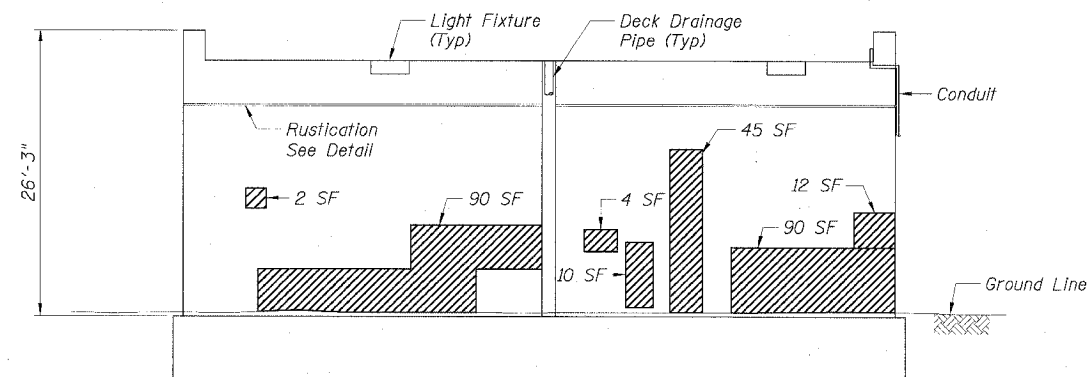


STATE OF ILLINOIS
DEPARTMENT OF TRANSPORTATION

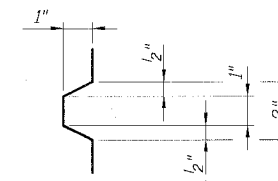
F.A.I. RTE.	SECTION	COUNTY	TOTAL SHEETS	SHEET NO.
90/94		COOK	598	450
STA.	TO STA.			
FED. ROAD DIST. NO. 1	ILLINOIS	FED. AID PROJECT		
1818, ETC, 2324.6-1PIR-9			62302	



PLAN
PIER 1
(S.N. 016-1148)



ELEVATION
PIER 1 - NORTH FACE
(S.N. 016-1148)



DETAIL OF
RUSTICATION

LEGEND

- Area of Formed Concrete Repair (Depth Equal to or Less than 5")
- Area of Formed Concrete Repair (Depth Greater than 5")
- Epoxy Crack Sealing

Sheet S2 of 4

BILL OF MATERIAL		
Item	Unit	Quantity
		Pier 1 North Face
Formed Concrete Repair (Depth Equal to or Less Than 5")	Sq Ft	253
Formed Concrete Repair (Depth Greater Than 5")	Sq Ft	
Epoxy Crack Sealing	LF	

REVISIONS	
NAME	DATE

ILLINOIS DEPARTMENT OF TRANSPORTATION
F.A.I. 90/94 (DAN RYAN EXPRESSWAY)
PIER 1 - PLAN AND ELEVATION
SUBSTRUCTURE REPAIRS
METRA BRIDGE (SN 016-1148)
COOK COUNTY

SCALE: None
DATE: JULY 7, 2005
DRAWN BY: CHD
CHECKED BY: MJP

CTE | AECOM
325 East Wacker Drive, Suite 600, Chicago, Illinois 60601-2276
T 312.495.2320 F 312.495.1153 www.cteaecom.com

05/24/2005 02:21:45 PM