

STATE OF ILLINOIS  
DEPARTMENT OF TRANSPORTATION

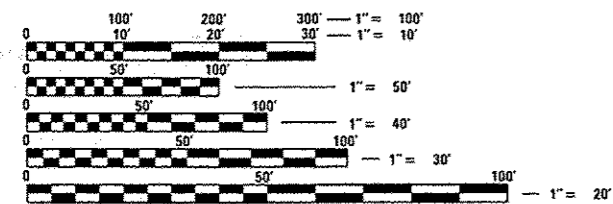
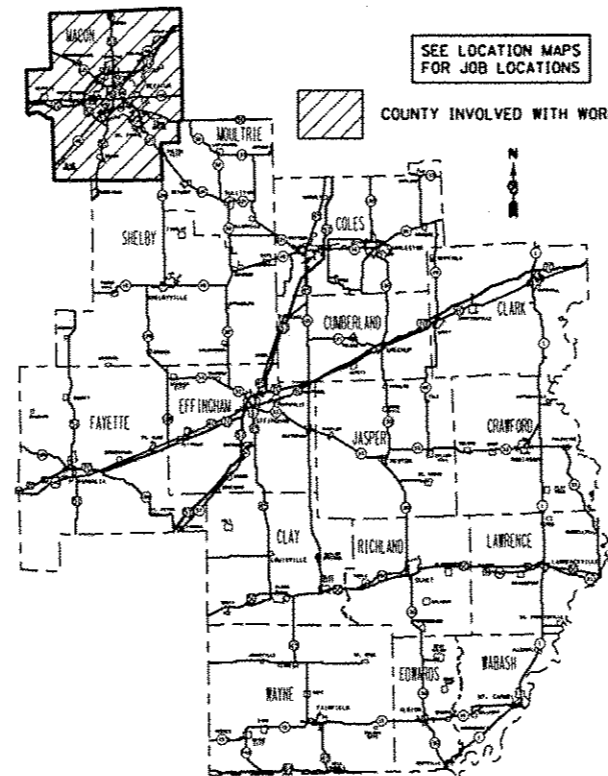
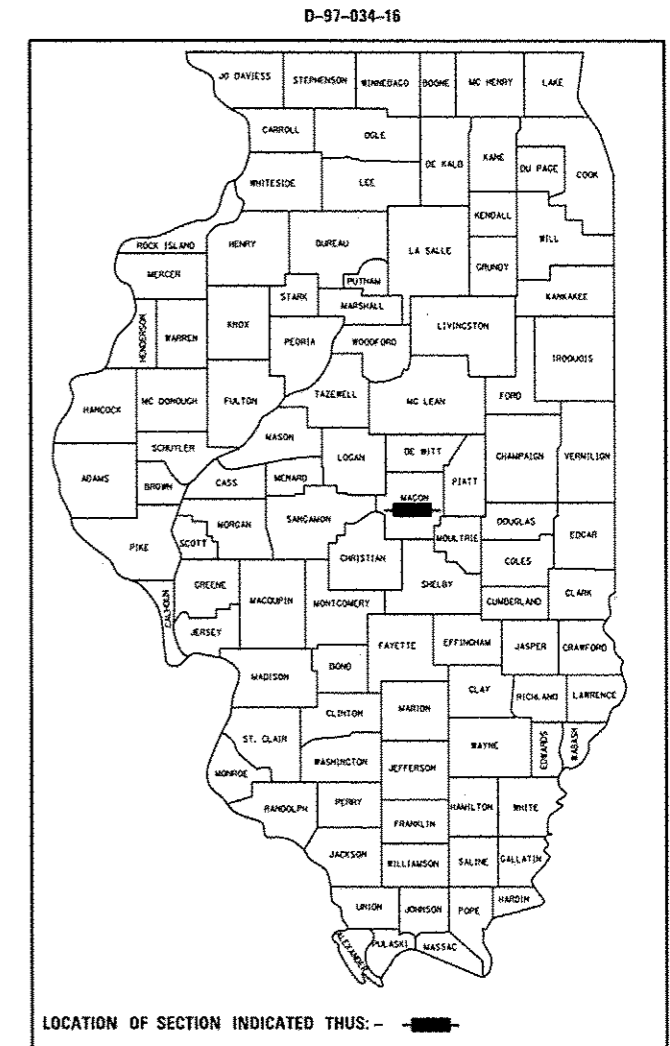
|           |         |          |                    |           |
|-----------|---------|----------|--------------------|-----------|
| F.A. RTE. | SECTION | COUNTY   | TOTAL SHEETS       | SHEET NO. |
|           |         | ILLINOIS | 8                  | 1         |
|           |         |          | CONTRACT NO. 74770 |           |

FOR INDEX OF SHEETS, SEE SHEET NO. 2

# PROPOSED HIGHWAY PLANS

VARIOUS ROUTES  
SECTION D7 HMA RESURF 2017-1  
PARTIAL WIDTH RESURFACING  
MACON COUNTY

C-97-065-16



FULL SIZE PLANS HAVE BEEN PREPARED USING STANDARD ENGINEERING SCALES. REDUCED SIZED PLANS WILL NOT CONFORM TO STANDARD SCALES. IN MAKING MEASUREMENTS ON REDUCED PLANS, THE ABOVE SCALES MAY BE USED.

J.U.L.I.E.  
JOINT UTILITY LOCATION INFORMATION FOR EXCAVATION  
1-800-892-0123  
OR 811

PROJECT ENGINEER: TOM RONAN  
PROJECT MANAGER: KALEB KNIERIM  
TELEPHONE: 217-342-8361  
CONTRACT NO. 74770

STATE OF ILLINOIS  
DEPARTMENT OF TRANSPORTATION

SUBMITTED August 8 20 16  
Jeffrey H South  
REGIONAL ENGINEER

Sept 30 20 16  
Maureen M. Adair  
ENGINEER OF DESIGN AND ENVIRONMENT

Sept 30 20 16  
Kaleb Knierim  
DIRECTOR OF PROGRAM DEVELOPMENT

PRINTED BY THE AUTHORITY  
OF THE STATE OF ILLINOIS

INDEX OF SHEETS

| SHEET NO. | ITEM  |
|-----------|---|
| 1         | COVER SHEET   |
| 2         | INDEX OF SHEETS, HIGHWAY STANDARDS, & GENERAL NOTES |
| 3         | SUMMARY OF QUANTITIES                               |
| 4-5       | SCHEDULES OF QUANTITIES                             |
| 6-8       | LOCATION MAPS                                       |

THE FOLLOWING STANDARDS ARE A PART OF THESE PLANS AND ARE INCLUDED AFTER SHEET NO. 7 :

| STD. NO.  | DESCRIPTION  |
|-----------|--|
| 000001-06 | STANDARD SYMBOLS, ABBREVIATIONS AND PATTERNS                                   |
| 701101-05 | OFF-ROAD OPERATIONS, MULTI-LANE, 15' (4.5 M) TO 24' (600 M) FROM PAVEMENT EDGE |
| 701106-02 | OFF-ROAD OPERATIONS, MULTILANE, MORE THAN 15' (4.5 M) AWAY                     |
| 701400-08 | APPROACH TO LANE CLOSURE, FREEWAY/EXPRESSWAY                                   |
| 701401-09 | LANE CLOSURE, FREEWAY/EXPRESSWAY   |
| 701601-09 | URBAN LANE CLOSURE, ONE-WAY OR TWO-WAY WITH NONTRAVERSABLE MEDIAN              |
| 701602-07 | URBAN LANE CLOSURE, MULTI-LANE, TWO-WAY WITH BI-DIRECTIONAL TURN LANE          |
| 701901-05 | TRAFFIC CONTROL DEVICES  |
| 886001-01 | DETECTOR LOOP INSTALLATIONS  |
| 886006-01 | TYPICAL LAYOUT FOR DETECTOR LOOPS  |

**NUMBER OF TURNS REQUIRED  
IN DETECTOR LOOPS**

| 6 X 6 |      | LOOP SIZE |
|-------|------|-----------|
|       |      | 2 TURNS   |
|       |      | 3 TURNS   |
| 0     | 545  | 4 TURNS   |
| 546   | 818  | 5 TURNS   |
| 819   | 1145 | 6 TURNS   |
| 1146  | 1527 | 7 TURNS   |
| 1528  | 1964 | 8 TURNS   |
| 1965  | 2455 | 9 TURNS   |
| 2456  | 3000 | 10 TURNS  |

THE NUMBERS IN THE TABLE REPRESENT THE LENGTH OF ELECTRIC CABLE FROM THE LOOP TO THE CABINET

GENERAL NOTES

THIS SECTION SHALL BE CONSTRUCTED IN ACCORDANCE WITH THE PLANS; THE "STANDARD SPECIFICATIONS FOR ROAD AND BRIDGE CONSTRUCTION" ADOPTED APRIL 1, 2016; THE "SUPPLEMENTAL SPECIFICATIONS AND RECURRING SPECIAL PROVISIONS" ADOPTED APRIL 1, 2016; AND THE SPECIAL PROVISIONS INCLUDED IN THE PROPOSAL.

THIS PROJECT IS LOCATED ON ILLINOIS ROUTE 121, U.S. ROUTE 51, U.S. ROUTE 36, AND OLD U.S. ROUTE 36 IN AND NEAR DECATUR IN MACON COUNTY. THE NET PROJECT LENGTH IS 1.22 MILES. THE WORK INCLUDED IN SECTION 07 HMA RESURF 2017-1 CONSISTS OF MILLING, HOT-MIX ASPHALT RESURFACING, PAVEMENT MARKING, AND ANY OTHER WORK NECESSARY TO COMPLETE THE SECTION.

PAVEMENT MARKING SHALL BE APPLIED IN ACCORDANCE WITH SECTION 700 OF THE STANDARD SPECIFICATIONS. SHORT TERM PAVEMENT MARKING SHALL BE APPLIED TO THE MILLED SURFACE AND HOT-MIX ASPHALT SURFACE COURSE AS SPECIFIED IN SECTION 703 OF THE STANDARD SPECIFICATIONS. TEMPORARY TAPE SHALL BE USED ON THE SURFACE COURSE AND PAINT SHALL BE USED ON THE MILLED SURFACE.

THE TOTAL QUANTITY OF PAINT PAVEMENT MARKING-LINE 4" CONSISTS OF 4,066 FEET OF WHITE AND 4,365 FEET OF YELLOW.

THE TOTAL QUANTITY OF THERMOPLASTIC PAVEMENT MARKING-LINE 4" CONSISTS OF 219 FEET OF WHITE AND 400 FEET OF YELLOW.

THE TOTAL QUANTITY OF PAINT PAVEMENT MARKING-LINE 6" CONSISTS OF 885 FEET OF WHITE.

THE TOTAL QUANTITY OF RAISED REFLECTIVE PAVEMENT MARKERS IS 7 ONE-WAY AMBER MARKERS AND 142 CRYSTAL ONE-WAY MARKERS.

AN ESTIMATED QUANTITY OF 200 FEET OF DETECTOR LOOPS, TYPE I HAS BEEN INCLUDED TO REPLACE ANY DETECTOR LOOPS THAT ARE WITHIN THE LIMITS OF RESURFACING. THE ACTUAL LOCATION OF DETECTOR LOOPS AND FINAL QUANTITIES SHALL BE DETERMINED BY THE ENGINEER IN THE FIELD.

THE PAY ITEM TEMPORARY RAMP HAS BEEN INCLUDED FOR THE CONSTRUCTION OF TEMPORARY RAMPS IN ACCORDANCE WITH ARTICLE 406.08 OF THE STANDARD SPECIFICATIONS. THE COST SHALL INCLUDE BOTH THE INSTALLATION AND THE REMOVAL OF THE TEMPORARY RAMPS.

THE RESIDENT ENGINEER SHALL BE THE SOLE JUDGE CONCERNING THE CURING TIME FOR ALL HOT-MIX ASPHALT.

THE ACCEPTANCE OF THE POLYMERIZED HOT-MIX-ASPHALT SURFACE COURSE, MIX "D", N90 SHALL BE BASED ON QC/OA TESTING.

THE CONTRACTOR SHALL PROVIDE INTERNET ACCESSIBILITY TO THE HOT-MIX ASPHALT PLANT QUALITY CONTROL LAB SO THAT HOT-MIX ASPHALT PLANT REPORTS CAN BE E-MAILED TO THE DISTRICT HEADQUARTERS. THIS WORK SHALL BE INCLUDED IN THE COST OF THE HOT-MIX ASPHALT SURFACE COURSE.

VIBRATORY ROLLERS IN DYNAMIC MODE WILL NOT BE PERMITTED AT LOCATIONS #1, #2 AND #3. DENSITY REQUIREMENTS MUST STILL BE MET.

A UNIFORMLY STRAIGHT SAW CUT SHALL BE MADE AT LOCATIONS WHERE PROPOSED NEW CONSTRUCTION WILL ABUT EXISTING HOT-MIX ASPHALT SURFACES. THE SAW CUT SHALL BE MADE FULL DEPTH THROUGH THE EXISTING SURFACE. THIS WORK WILL BE CONSIDERED INCLUDED IN THE COST OF THE CONTRACT ITEMS INVOLVED AND NO EXTRA COMPENSATION WILL BE ALLOWED.

THE FOLLOWING MIXTURE REQUIREMENTS ARE APPLICABLE FOR THIS PROJECT:

APPLICATION: POLYMERIZED HMA SURFACE COURSE, MIX "D", N90  
 MIXTURE USE: SURFACE COURSE (1")  
 PG GRADE: SBS PG 70-22  
 DESIGN AIR VOIDS: 4.0% @ DESIGN = 90  
 MIXTURE COMPOSITION: IL-9.5  
 FRICTION AGGREGATE: MIXTURE D

THE FOLLOWING RATES OF APPLICATION HAVE BEEN USED IN THE CALCULATING PLAN QUANTITIES:

BITUMINOUS MATERIALS (TACK COAT) 0.05 LBS/SQ FT  
 HOT-MIX ASPHALT 112 LBS/SQ YD/INCH

|  |                                 |            |           |   |                                |           |                      |        |              |                           |
|--|---------------------------------|------------|-----------|---|--------------------------------|-----------|----------------------|--------|--------------|---------------------------|
| FILE NAME =  | USER NAME = steffenh            | DESIGNED - | REVISED - | <b>STATE OF ILLINOIS<br/>DEPARTMENT OF TRANSPORTATION</b> | <b>INDEX AND GENERAL NOTES</b> | F.A. RTE. | SECTION              | COUNTY | TOTAL SHEETS | SHEET NO.                 |
| p:\L\284EB\INTEG\Illinois.gov\PI00T\Documents\DOT Offices\District 7\Projects\74778\DRAWING\CD\Sheets\074778- sht-gennot | PLLOT SCALE = 100.0000' = 1 in. | CHECKED -  | REVISED - |   |                                | VAR       | DT HMA RESURF 2017-1 | MACON  | 8            | 2                         |
| Default  | PLLOT DATE = 8/8/2016           | DATE -     | REVISED - |   |                                | SCALE: NA | SHEET OF SHEETS      | STA.   | TO STA.      | CONTRACT NO. 74770        |
|  |                                 |            |           |   |                                |           |                      |        |              | ILLINOIS FED. AID PROJECT |

100%  
STATE

100%  
STATE

| SUMMARY OF QUANTITIES |  |       | TOTAL QUANTITIES | CONSTRUCTION TYPE CODE |            |
|-----------------------|--|-------|------------------|------------------------|------------|
| CODE NO               | ITEM   | UNIT  |                  | URBAN 0005             | RURAL 0005 |
| 40600290              | BITUMINOUS MATERIALS (TACK COAT)                         | POUND | 417              | 194                    | 223        |
| 40600990              | TEMPORARY RAMP   | SQ YD | 359              | 140                    | 219        |
| 40603545              | POLYMERIZED HOT-MIX ASPHALT SURFACE COURSE, MIX "D", N90 | TON   | 700              | 325                    | 375        |
| 44000155              | HOT-MIX ASPHALT SURFACE REMOVAL, 1 1/2"                  | SQ YD | 8332             | 3870                   | 4462       |
| 67100100              | MOBILIZATION   | LSUM  | 1                | 0.45                   | 0.55       |
| 70100800              | TRAFFIC CONTROL AND PROTECTION, STANDARD 701401          | LSUM  | 1                |                        | 1          |
| 70102630              | TRAFFIC CONTROL AND PROTECTION, STANDARD 701601          | LSUM  | 1                | 1                      |            |
| 70102632              | TRAFFIC CONTROL AND PROTECTION, STANDARD 701602          | LSUM  | 1                | 1                      |            |
| 70300100              | SHORT TERM PAVEMENT MARKING                              | FOOT  | 1316             | 608                    | 708        |
| 70300150              | SHORT TERM PAVEMENT MARKING REMOVAL                      | SQ FT | 232              | 98                     | 134        |
| * 78000200            | THERMOPLASTIC PAVEMENT MARKING - LINE 4"                 | FOOT  | 619              | 619                    |            |
| * 78001110            | PAINT PAVEMENT MARKING - LINE 4"                         | FOOT  | 8431             | 2516                   | 5915       |

| SUMMARY OF QUANTITIES |   |        | TOTAL QUANTITIES | CONSTRUCTION TYPE CODE |            |
|-----------------------|---|--------|------------------|------------------------|------------|
| CODE NO               | ITEM                                      | UNIT   |                  | URBAN 0005             | RURAL 0005 |
| * 78001130            | PAINT PAVEMENT MARKING - LINE 6"          | FOOT   | 885              |                        | 885        |
| * 78100100            | RAISED REFLECTIVE PAVEMENT MARKER         | EACH   | 149              | 23                     | 126        |
| * 88600100            | DETECTOR LOOP, TYPE I                     | FOOT   | 200              | 200                    |            |
| X7010410              | SPEED DISPLAY TRAILER                     | CAL MO | 1.5              |                        | 1.5        |
| * X7830070            | GROOVING FOR RECESSED PAVEMENT MARKING 5" | FOOT   | 619              | 619                    |            |

\* SPECIALTY ITEM

5

|   |   |            |           |
|---|---|------------|-----------|
| FILE NAME =                             | USER NAME = steffanah                       | DESIGNED - | REVISED - |
| \\L1284EBID\INTEG\illinois.gov\PI001\Do | \\mnts\1007\07\proj\District 7\Projects\747 | DRAWN      | REVISED - |
|   | PLOT SCALE = 100.0000' / 1" = 1'            | CHECKED -  | REVISED - |
| Default                                 | PLOT DATE = 8/9/2016                        | DATE -     | REVISED - |

STATE OF ILLINOIS  
DEPARTMENT OF TRANSPORTATION

SUMMARY OF QUANTITIES

|                           |                      |        |                    |           |
|---------------------------|----------------------|--------|--------------------|-----------|
| F.A. RTE.                 | SECTION              | COUNTY | TOTAL SHEETS       | SHEET NO. |
| VAR                       | DT HMA RESURF 2017-1 | MACON  | 8                  | 3         |
|                           |                      |        | CONTRACT NO. 74770 |           |
| ILLINOIS FED. AID PROJECT |                      |        |                    |           |

SCALE: NA SHEET 1 OF 1 SHEETS STA. TO STA.

| PAVEMENT MARKING SCHEDULE             |        |                             |                             |  |                                 |                             |                                   |   |     |
|---------------------------------------|--------|-----------------------------|-----------------------------|--|---------------------------------|-----------------------------|-----------------------------------|---|-----|
| LOCATION TO LOCATION                  |        |                             |                             |  |                                 |                             |                                   |   |     |
| LANE                                  | LENGTH | SHORT TERM PAVEMENT MARKING | SHORT TERM PAVEMENT MARKING | THERMOPLASTIC PAVEMENT MARKING - LINE 4" | PAINT PAVEMENT MARKING -LINE 4" | PAINT PAVEMENT MARKING - 6" | RAISED REFLECTIVE PAVEMENT MARKER | GROOVING FOR RECESSED PAVEMENT MARKING 5" |     |
|                                       | FOOT   | FOOT                        | SQ FT                       | FOOT                                     | FOOT                            | FOOT                        | EACH                              | FOOT                                      |     |
| URBAN                                 |        |                             |                             |  |                                 |                             |                                   |   |     |
| LOCATION 1                            |        |                             |                             |  |                                 |                             |                                   |   |     |
| ILLINOIS ROUTE 121                    |        |                             |                             |  |                                 |                             |                                   |   |     |
| Garfield Underpass PCC 250' South     | SBDL   | 250                         | 63                          | 8  | 313                             |                             | 8                                 | 313                                       |     |
| Garfield Underpass PCC 150' South     | SBPL   | 150                         | 30                          | 5  | 188                             |                             | 6                                 | 188                                       |     |
| Geddes Ave south crosswalk 60' south  | SBDL   | 60                          | 12                          | 2  | 15                              |                             | 2                                 | 15  |     |
| Geddes Ave south crosswalk 350' south | SBPL   | 350                         | 70                          | 12                                       | 88                              |                             | 5                                 | 88  |     |
| 220' North of Locust St               | NBDL   | 65                          | 13                          | 2  | 16                              |                             | 2                                 | 16  |     |
| LOCATION 1 TOTALS                     |        |                             | 188                         | 29                                       | 619                             | 0                           | 0                                 | 23  | 619 |
| LOCATION 2                            |        |                             |                             |  |                                 |                             |                                   |   |     |
| US 36                                 |        |                             |                             |  |                                 |                             |                                   |   |     |
| EBDL US 36 stopbar to PCC at Oakland  | EBDL   | 730                         | 146                         | 24                                       | 913                             |                             |                                   |   |     |
| EBPL US 36 stopbar to PCC at Oakland  | EBPL   | 730                         | 146                         | 24                                       | 913                             |                             |                                   |   |     |
| LOCATION 2 TOTALS                     |        |                             | 292                         | 48                                       | 0                               | 1825                        | 0                                 | 0   | 0   |
| LOCATION 3                            |        |                             |                             |  |                                 |                             |                                   |   |     |
| US 36                                 |        |                             |                             |  |                                 |                             |                                   |   |     |
| 285' West of Pine St                  | EBDL   | 225                         | 45                          | 7  | 281                             |                             |                                   |   |     |
| 285' West of Pine St                  | EBPL   | 80                          | 16                          | 3  | 100                             |                             |                                   |   |     |
| EB Monroe Ave stopbar west 112'       | EBDL   | 112                         | 22                          | 4  | 28                              |                             |                                   |   |     |
| 285' West of Pine St                  | WBDL   | 225                         | 45                          | 7  | 281                             |                             |                                   |   |     |
| LOCATION 3 TOTALS                     |        |                             | 128                         | 21                                       | 0                               | 691                         | 0                                 | 0   | 0   |
| URBAN TOTALS                          |        |                             | 608                         | 98                                       | 619                             | 2516                        | 0                                 | 23  | 619 |

| PAVEMENT MARKING SCHEDULE              |        |                             |                             |  |                                 |                             |                                   |   |     |
|--|--------|-----------------------------|-----------------------------|--|---------------------------------|-----------------------------|-----------------------------------|---|-----|
| LOCATION TO LOCATION                   |        |                             |                             |  |                                 |                             |                                   |   |     |
| LANE                                   | LENGTH | SHORT TERM PAVEMENT MARKING | SHORT TERM PAVEMENT MARKING | THERMOPLASTIC PAVEMENT MARKING - LINE 4" | PAINT PAVEMENT MARKING -LINE 4" | PAINT PAVEMENT MARKING - 6" | RAISED REFLECTIVE PAVEMENT MARKER | GROOVING FOR RECESSED PAVEMENT MARKING 5" |     |
|  | FOOT   | FOOT                        | SQ FT                       | FOOT                                     | FOOT                            | FOOT                        | EACH                              | FOOT                                      |     |
| RURAL                                  |        |                             |                             |  |                                 |                             |                                   |   |     |
| LOCATION 4                             |        |                             |                             |  |                                 |                             |                                   |   |     |
| US BUSINESS 51                         |        |                             |                             |  |                                 |                             |                                   |   |     |
| 715' to 1140' South of Elwin Gore      | SBDL   | 425                         | 85                          | 14                                       | 850                             | 106                         | 12                                |   |     |
| 1290' to 1490' South of Elwin Gore     | SBDL   | 200                         | 40                          | 7  | 400                             | 50                          | 8                                 |   |     |
| 1290' to 1490' South of Elwin Gore     | SBPL   | 200                         | 40                          | 7  | 400                             | 50                          | 8                                 |   |     |
| 570' South of Gabriel Rd               | SBDL   | 50                          | 10                          | 2  | 100                             | 13                          | 4                                 |   |     |
| 550' North of Wall St                  | SBDL   | 200                         | 40                          | 7  | 400                             | 50                          | 8                                 |   |     |
| 550' North of Wall St                  | SBPL   | 200                         | 40                          | 7  | 400                             | 50                          | 8                                 |   |     |
| 750' South of Elwin Blacktop Ovhd CH30 | NBDL   | 550                         | 110                         | 18                                       | 1100                            | 138                         | 16                                |   |     |
| 750' South of Elwin Blacktop Ovhd CH30 | NBPL   | 550                         | 110                         | 18                                       | 1100                            | 138                         | 16                                |   |     |
| LOCATION 4 TOTALS                      |        |                             | 475                         | 78                                       | 0                               | 4750                        | 594                               | 80  | 0   |
| LOCATION 5                             |        |                             |                             |  |                                 |                             |                                   |   |     |
| US OLD 36                              |        |                             |                             |  |                                 |                             |                                   |   |     |
| 800' to 1150' East of Meridian         | EBDL   | 350                         | 70                          | 23                                       | 350                             | 88                          | 10                                |   |     |
| 2950' to 3120' East of Meridian        | EBDL   | 170                         | 34                          | 11                                       | 170                             | 43                          | 6                                 |   |     |
| 3220' to 3400' East of Meridian        | EBDL   | 180                         | 36                          | 6  | 180                             | 45                          | 6                                 |   |     |
| 3880' to 3950' East of Meridian        | EBDL   | 70                          | 14                          | 2  | 70                              | 18                          | 4                                 |   |     |
| 3980' to 4020' East of Meridian        | EBDL   | 40                          | 8                           | 1  | 40                              | 10                          | 4                                 |   |     |
| 4095' to 4130' East of Meridian        | EBDL   | 35                          | 7                           | 1  | 35                              | 9                           | 2                                 |   |     |
| 4195' to 4225' East of Meridian        | EBDL   | 30                          | 6                           | 1  | 30                              | 8                           | 2                                 |   |     |
| 4265' to 4510' East of Meridian        | EBDL   | 245                         | 49                          | 8  | 245                             | 61                          | 8                                 |   |     |
| 4985' to 5030' East of Meridian        | EBDL   | 45                          | 9                           | 1  | 45                              | 11                          | 4                                 |   |     |
| LOCATION 5 TOTALS                      |        |                             | 233                         | 56                                       | 0                               | 1165                        | 291                               | 46  | 0   |
| RURAL TOTALS                           |        |                             | 708                         | 134                                      | 0                               | 5915                        | 885                               | 126                                       | 0   |
| PROJECT TOTALS                         |        |                             | 1316                        | 232                                      | 619                             | 8431                        | 885                               | 149                                       | 619 |

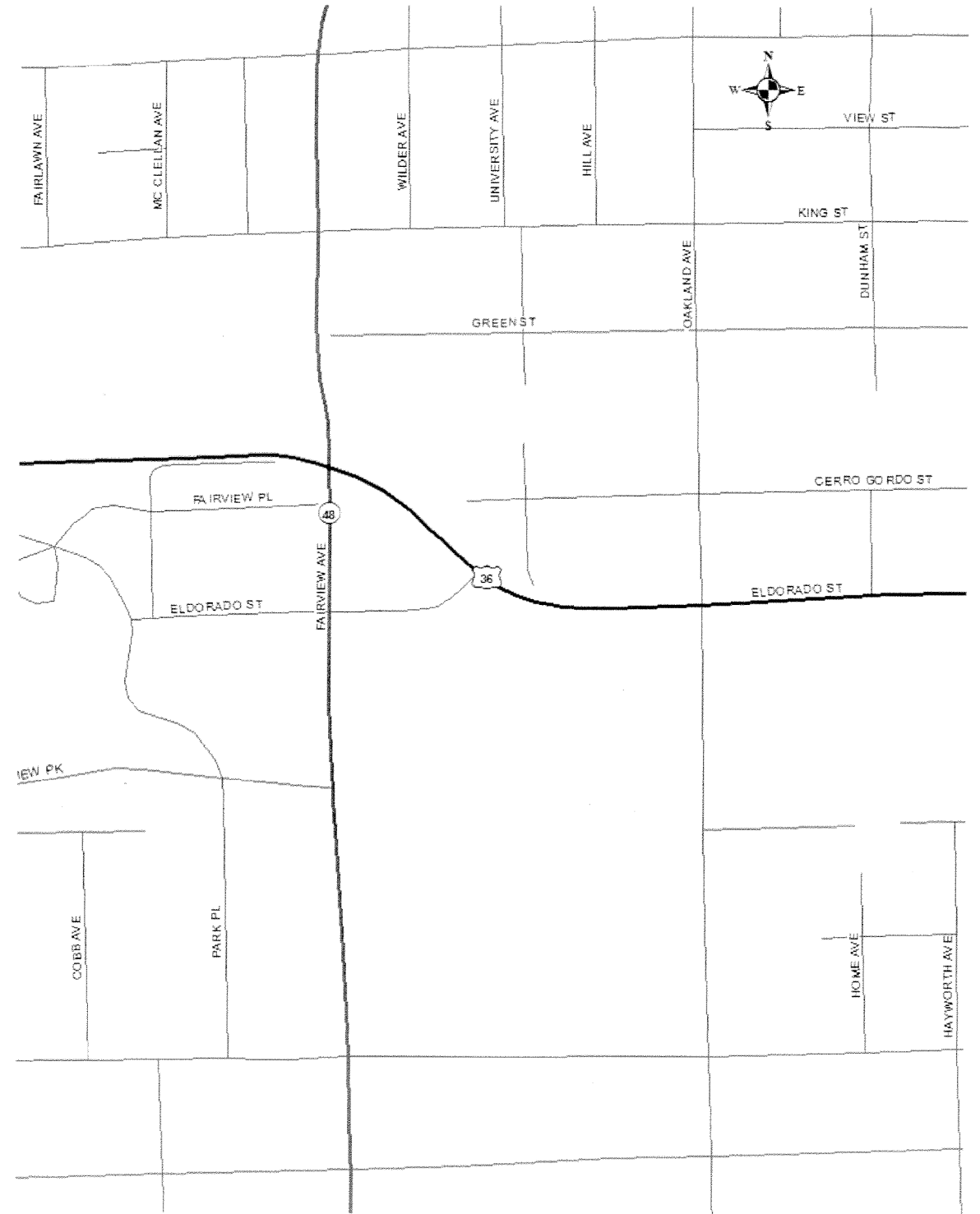
| RESURFACING SCHEDULE<br>LOCATION TO LOCATION |      |        |                      |       |   |                                  |  |                |
|--|------|--------|----------------------|-------|---|----------------------------------|--|----------------|
|  | LANE | LENGTH | WIDTH OF RESURFACING | AREA  | HOT-MIX ASPHALT SURFACE REMOVAL, 1 1/2" | BITUMINOUS MATERIALS (TACK COAT) | POLYMERIZED HOT-MIX ASPHALT SURFACE COURSE, MIX "D", N90 | TEMPORARY RAMP |
|  |      | FOOT   | FOOT                 | SO YD | SO YD                                   | POUND                            | TON  | SO YD          |
| URBAN  |      |        |                      |       |   |                                  |  |                |
| LOCATION 1<br>ILLINOIS ROUTE 121             |      |        |                      |       |   |                                  |  |                |
| Garfield Underpass PCC 250' South            | SBDL | 250    | 12                   | 333   | 333                                     | 17                               | 28   | 13             |
| Garfield Underpass PCC 150' South            | SBPL | 150    | 10                   | 167   | 167                                     | 8                                | 14   | 11             |
| Geddes Ave south crosswalk 60' south         | SBDL | 60     | 12                   | 720   | 80                                      | 4                                | 7  | 13             |
| Geddes Ave south crosswalk 350' south        | SBPL | 350    | 12                   | 4200  | 467                                     | 23                               | 39   | 13             |
| 220' North of Locust St                      | NBDL | 65     | 11                   | 715   | 79                                      | 4                                | 7  | 12             |
| LOCATION 1 TOTALS                            |      |        |                      |       | 1126                                    | 56                               | 95   | 63             |
| LOCATION 2<br>US 36                          |      |        |                      |       |   |                                  |  |                |
| EBDL US 36 stopbar to PCC at Oakland         | EBDL | 730    | 12                   | 973   | 973                                     | 49                               | 82   | 13             |
| EBPL US 36 stopbar to PCC at Oakland         | EBPL | 730    | 12                   | 973   | 973                                     | 49                               | 82   | 13             |
| LOCATION 2 TOTALS                            |      |        |                      |       | 1947                                    | 97                               | 164  | 27             |
| LOCATION 3<br>US 36                          |      |        |                      |       |   |                                  |  |                |
| 285' West of Pine St                         | EBDL | 225    | 11                   | 275   | 275                                     | 14                               | 23   | 12             |
| 285' West of Pine St                         | EBPL | 80     | 11                   | 98    | 98                                      | 5                                | 8  | 12             |
| EB Monroe Ave stopbar west 112'              | EBDL | 112    | 12                   | 149   | 149                                     | 7                                | 13   | 13             |
| 285' West of Pine St                         | WBDL | 225    | 11                   | 275   | 275                                     | 14                               | 23   | 12             |
| LOCATION 3 TOTALS                            |      |        |                      |       | 797                                     | 40                               | 67   | 50             |
| URBAN TOTALS                                 |      |        |                      |       | 3870                                    | 194                              | 325  | 140            |

| RESURFACING SCHEDULE<br>LOCATION TO LOCATION |      |        |                      |       |   |                                  |  |                |
|--|------|--------|----------------------|-------|---|----------------------------------|--|----------------|
|  | LANE | LENGTH | WIDTH OF RESURFACING | AREA  | HOT-MIX ASPHALT SURFACE REMOVAL, 1 1/2" | BITUMINOUS MATERIALS (TACK COAT) | POLYMERIZED HOT-MIX ASPHALT SURFACE COURSE, MIX "D", N90 | TEMPORARY RAMP |
|  |      | FOOT   | FOOT                 | SO YD | SO YD                                   | POUND                            | TON  | SO YD          |
| RURAL  |      |        |                      |       |   |                                  |  |                |
| LOCATION 4<br>US BUSINESS 51                 |      |        |                      |       |   |                                  |  |                |
| 715' to 1140' South of Elwin Gore            | SBDL | 425    | 7                    | 331   | 331                                     | 17                               | 28   | 5              |
| 1290' to 1490' South of Elwin Gore           | SBDL | 200    | 10                   | 222   | 222                                     | 11                               | 19   | 8              |
| 1290' to 1490' South of Elwin Gore           | SBPL | 200    | 13                   | 289   | 289                                     | 14                               | 24   | 14             |
| 570' South of Gabriel Rd                     | SBDL | 50     | 12                   | 67    | 67                                      | 3                                | 6  | 18             |
| 550' North of Wall St                        | SBDL | 200    | 12                   | 267   | 267                                     | 13                               | 22   | 13             |
| 550' North of Wall St                        | SBPL | 200    | 12                   | 267   | 267                                     | 13                               | 22   | 13             |
| 750' South of Elwin Blacktop Ovhd CH30       | NBDL | 550    | 12                   | 733   | 733                                     | 37                               | 62   | 13             |
| 750' South of Elwin Blacktop Ovhd CH30       | NBPL | 550    | 12                   | 733   | 733                                     | 37                               | 62   | 13             |
| LOCATION 4 TOTALS                            |      |        |                      |       | 2908                                    | 145                              | 244  | 99             |
| LOCATION 5<br>US OLD 36                      |      |        |                      |       |   |                                  |  |                |
| 800' to 1150' East of Meridian               | EBDL | 350    | 12                   | 467   | 467                                     | 23                               | 39   | 13             |
| 2950' to 3120' East of Meridian              | EBDL | 170    | 12                   | 227   | 227                                     | 11                               | 19   | 13             |
| 3220' to 3400' East of Meridian              | EBDL | 180    | 12                   | 240   | 240                                     | 12                               | 20   | 13             |
| 3880' to 3950' East of Meridian              | EBDL | 70     | 12                   | 93    | 93                                      | 5                                | 8  | 13             |
| 3980' to 4020' East of Meridian              | EBDL | 40     | 12                   | 53    | 53                                      | 3                                | 4  | 13             |
| 4095' to 4130' East of Meridian              | EBDL | 35     | 12                   | 47    | 47                                      | 2                                | 4  | 13             |
| 4195' to 4225' East of Meridian              | EBDL | 30     | 12                   | 40    | 40                                      | 2                                | 3  | 13             |
| 4265' to 4510' East of Meridian              | EBDL | 245    | 12                   | 327   | 327                                     | 16                               | 27   | 13             |
| 4985' to 5030' East of Meridian              | EBDL | 45     | 12                   | 60    | 60                                      | 3                                | 5  | 13             |
| LOCATION 5 TOTALS                            |      |        |                      |       | 1553                                    | 78                               | 130  | 120            |
| RURAL TOTALS                                 |      |        |                      |       | 4462                                    | 223                              | 375  | 219            |
| PROJECT TOTALS                               |      |        |                      |       | 8332                                    | 417                              | 700  | 359            |

LOCATION 1



LOCATION 2



|  |                              |            |           |
|--|------------------------------|------------|-----------|
| FILE NAME =  | USER NAME = steffennk        | DESIGNED - | REVISED - |
| pw\11\084EBIDINTEG\illinois.gov\PIWIDOT\Documents\DOT Offices\District 7\Projects\74770\Drawings\CAD\Sheets\0774770-sht-plan.dgn |                              | CHECKED -  | REVISED - |
| Default  | PLOT SCALE = 100.0000' / in. | DATE -     | REVISED - |
|  | PLOT DATE = 8/8/2016         |            |           |

**STATE OF ILLINOIS  
DEPARTMENT OF TRANSPORTATION**

**LOCATION MAPS**

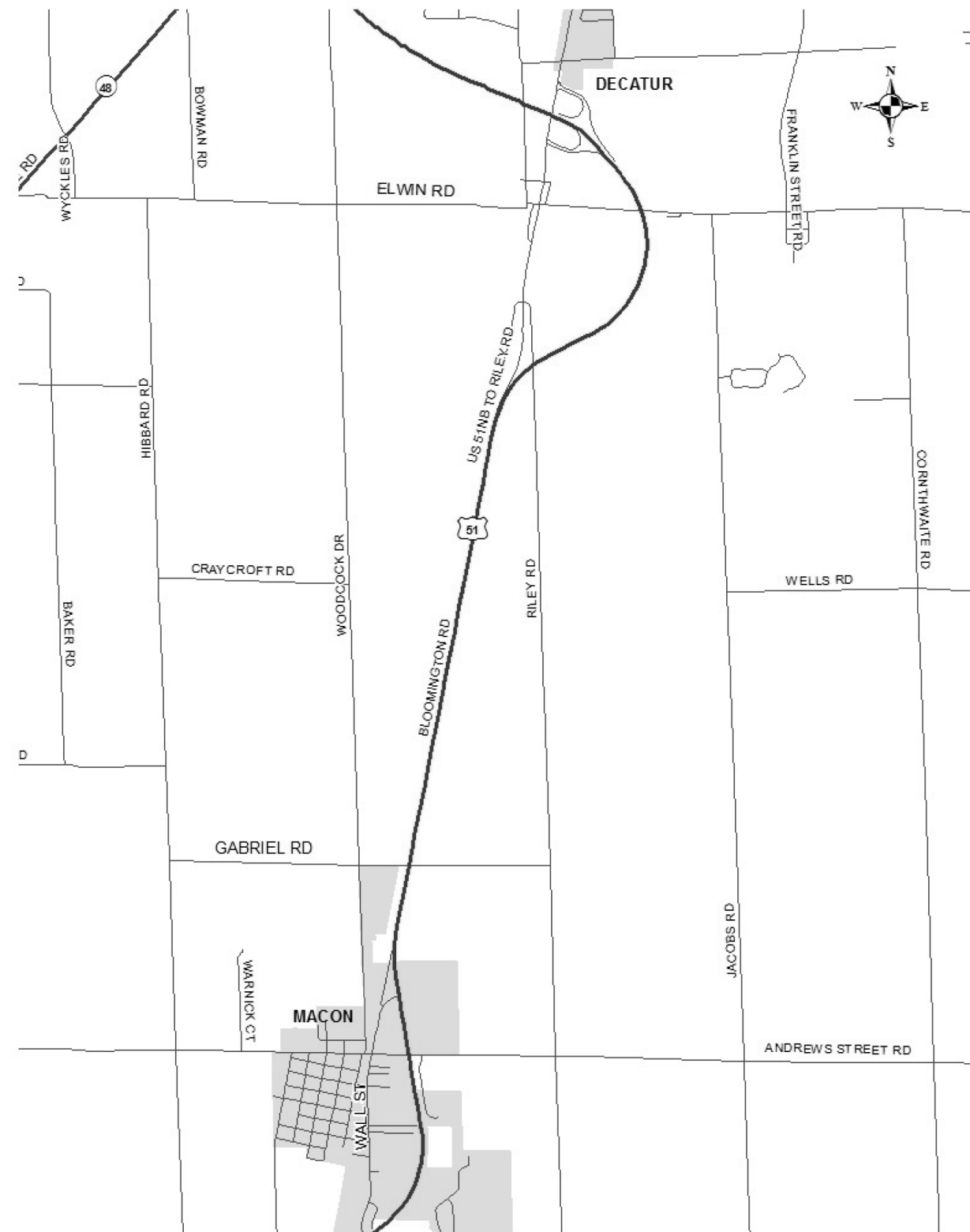
SCALE: NA SHEET 1 OF 3 SHEETS STA. TO STA.

| F.A. RTE.                 | SECTION              | COUNTY | TOTAL SHEETS       | SHEET NO. |
|---------------------------|----------------------|--------|--------------------|-----------|
| VAR                       | D7 HMA RESURF 2017-1 | MACON  | 8                  | 6         |
| ILLINOIS FED. AID PROJECT |                      |        | CONTRACT NO. 74770 |           |

LOCATION 3



LOCATION 4



|   |                             |            |           |
|---|-----------------------------|------------|-----------|
| FILE NAME =   | USER NAME = steffennk       | DESIGNED - | REVISED - |
| pw\11\084EBIDINTEG.illinois.gov\PIWIDOT\Documents\DOT Offices\District 7\Projects\74770\DRAWING\CAB\sheets\D774770-sht-plan.dgn |                             | REVISED -  | REVISED - |
| Default   | PLOT SCALE = 100.0000' / 1" | CHECKED -  | REVISED - |
|   | PLOT DATE = 8/8/2016        | DATE -     | REVISED - |

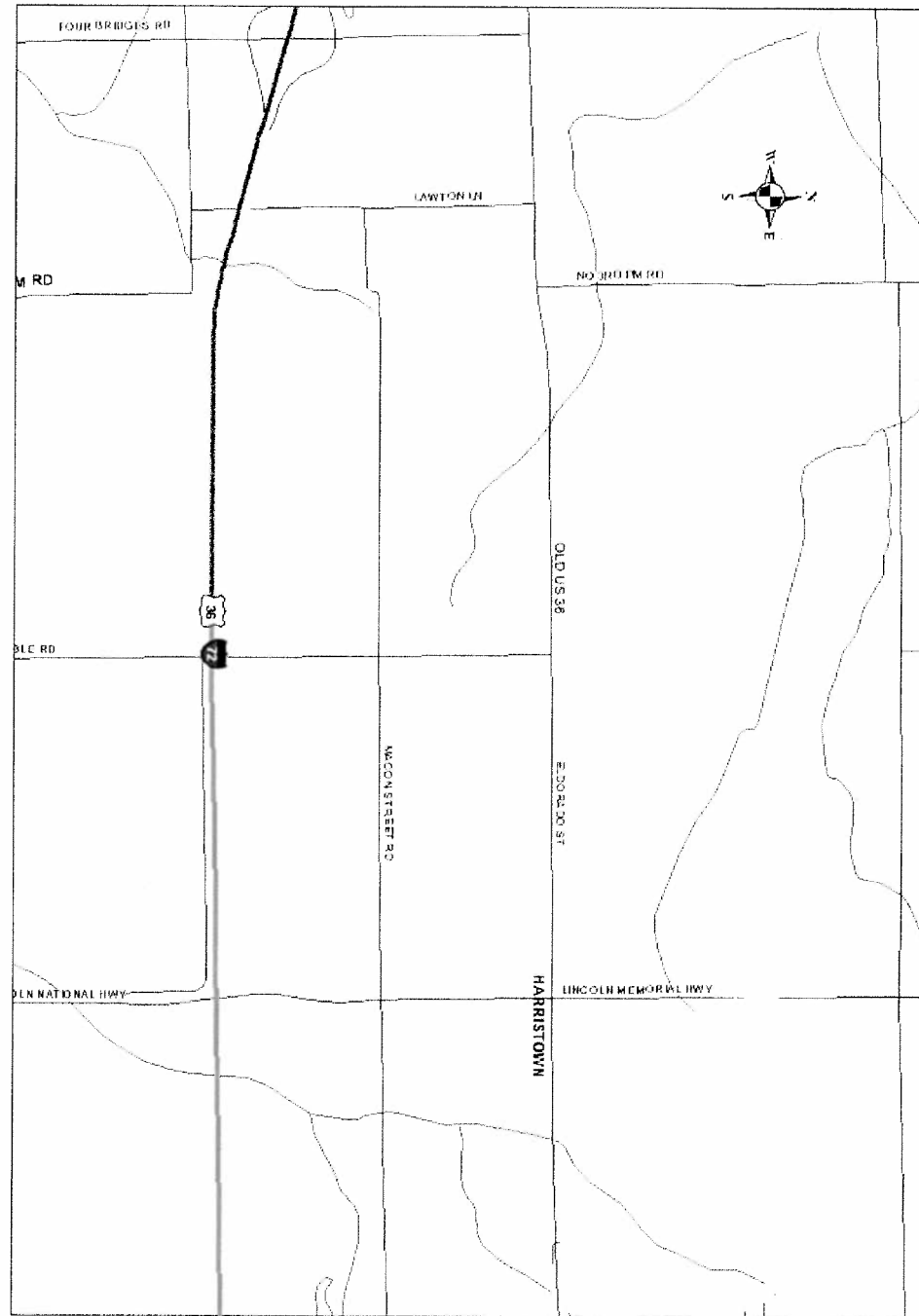
STATE OF ILLINOIS  
DEPARTMENT OF TRANSPORTATION

LOCATION MAPS

SCALE: NA SHEET 2 OF 3 SHEETS STA. TO STA.

| F.A. RTE.                 | SECTION              | COUNTY | TOTAL SHEETS       | SHEET NO. |
|---------------------------|----------------------|--------|--------------------|-----------|
| VAR                       | D7 HMA RESURF 2017-1 | MACON  | 8                  | 7         |
|                           |                      |        | CONTRACT NO. 74770 |           |
| ILLINOIS FED. AID PROJECT |                      |        |                    |           |

LOCATION 5



|   |                              |            |           |
|---|------------------------------|------------|-----------|
| FILE NAME =   | USER NAME = steffenk         | DESIGNED - | REVISED - |
| pw:\IL\084EBIDINTEG.illinois.gov\PWIDOT\Documents\IDOT Offices\District 7\Projects\74770\DRAWING\CADsheets\0774770-sht-plan.dgn |                              | DRAWN -    | REVISED - |
| Default   | PLOT SCALE = 100.0000' / in. | CHECKED -  | REVISED - |
|   | PLOT DATE = 8/8/2016         | DATE -     | REVISED - |

STATE OF ILLINOIS  
DEPARTMENT OF TRANSPORTATION

LOCATION MAPS

SCALE: NA SHEET 3 OF 3 SHEETS STA. TO STA.

| F.A. RTE.          | SECTION              | COUNTY | TOTAL SHEETS              | SHEET NO. |
|--------------------|----------------------|--------|---------------------------|-----------|
| VAR                | D7 HMA RESURF 2017-1 | MACON  | 8                         | 8         |
| CONTRACT NO. 74770 |                      |        | ILLINOIS FED. AID PROJECT |           |