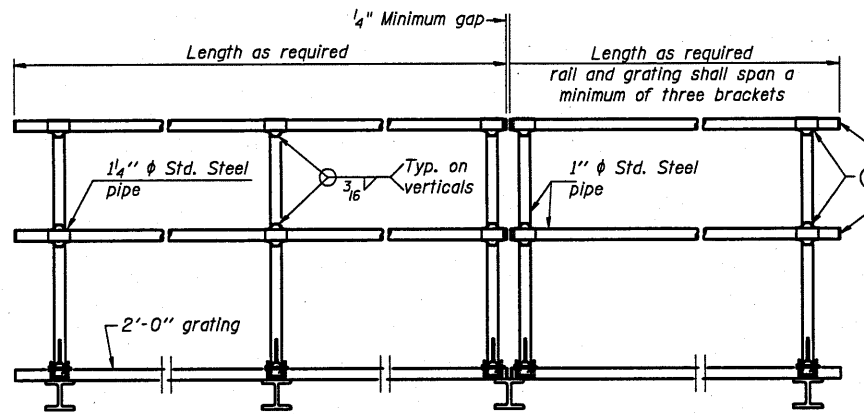
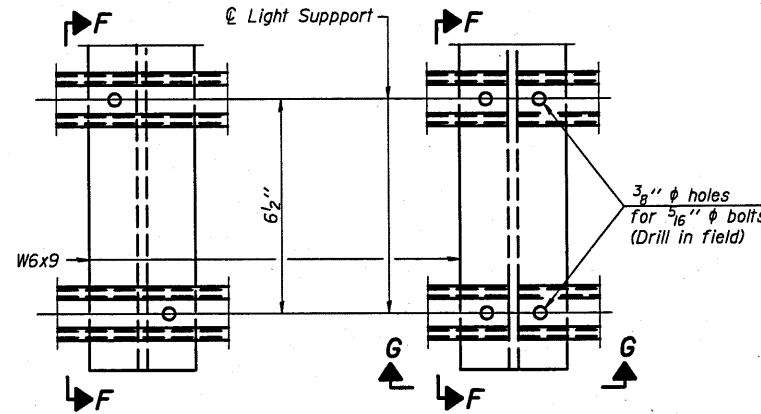


SIDE ELEVATION
(Showing safety chain w/o sign)

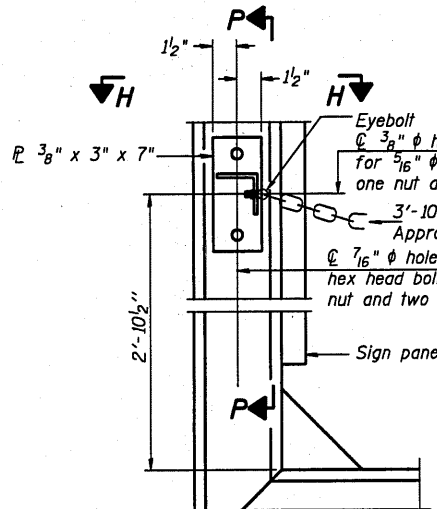


FRONT ELEVATION

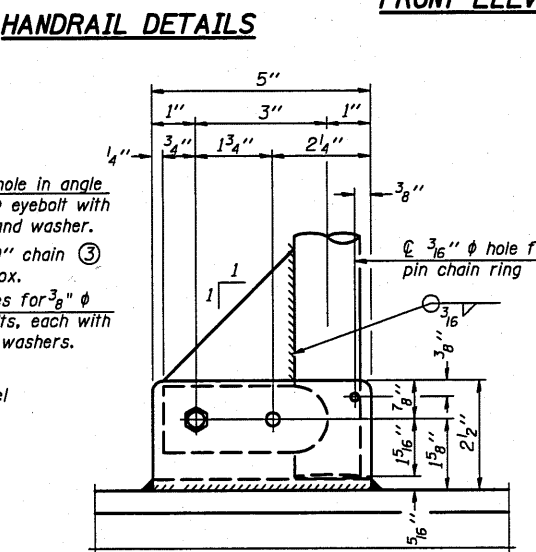
- ① Install standard force-fit end caps or weld 1/8" end plates with 1/8" c.f.w. and grind smooth. (All rail ends)
- ② Horizontal handrail member shall be continuous thru 1 1/4" pipe. Provide 1/16" hole in 1 1/4" pipe for 3/8" bolt. Field drill 1/16" hole in horizontal rail member. Provide washer and locknut for bolt. (Use 5/16" eyebolts in 1/16" holes on top rail at ends only.)



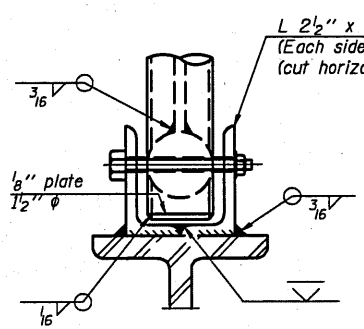
DETAIL F **DETAIL G**



ALTERNATE SAFETY CHAIN ATTACHMENT
(With Sign Present)
Items not shown same as "Side Elevation" of "Handrail Details"

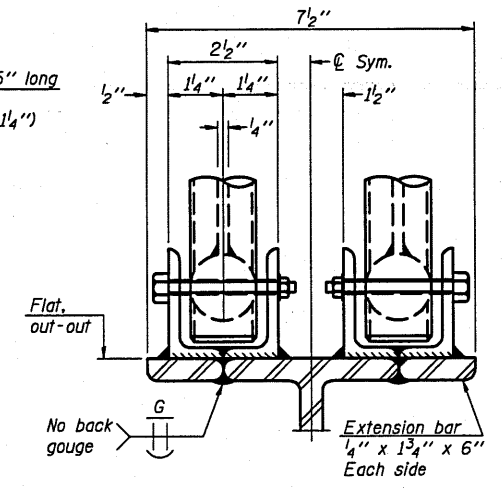


SIDE ELEVATION

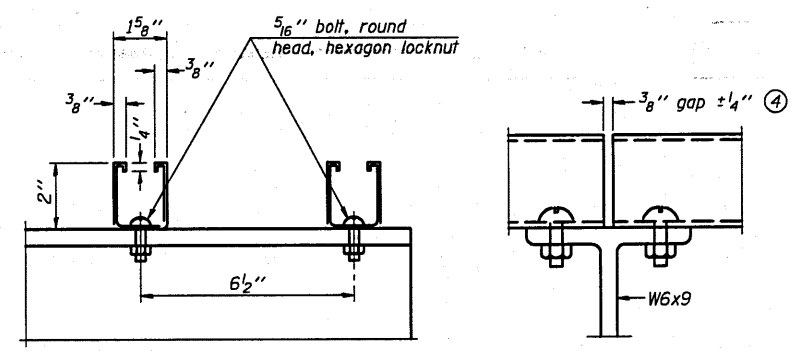


FRONT ELEVATION

See "ELEVATION" at right for dimensions.



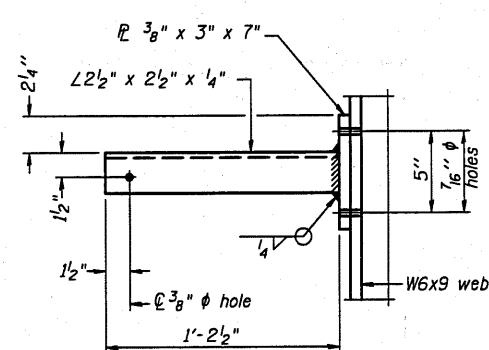
ELEVATION AT HANDRAIL JOINT



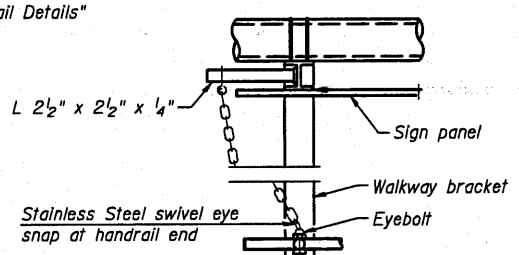
SECTION F-F **SECTION G-G**

LIGHTING FIXTURE MOUNTS (IF REQUIRED)

- ④ Field cut ends of light support channels shall be free of burrs or hazardous projections and coated with zinc-rich primer or equivalent.

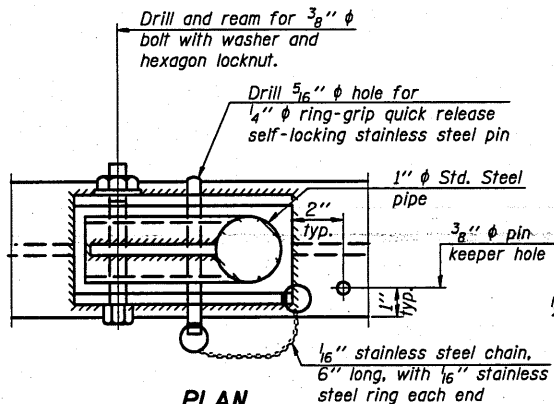


SECTION P-P

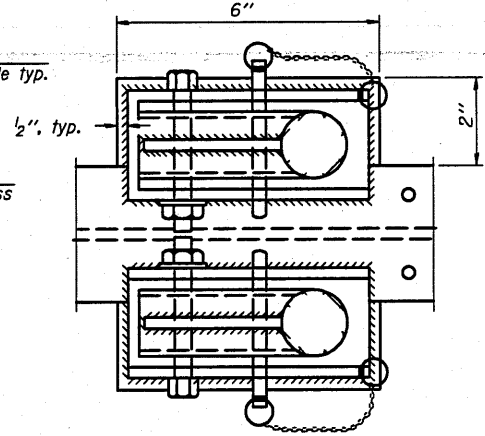


VIEW H-H

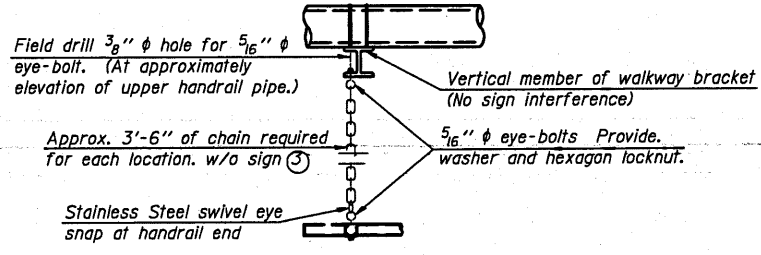
Details not shown similar to "Safety Chain" Details (Walkway omitted)



PLAN DETAIL E HANDRAIL HINGE



PLAN AT HANDRAIL JOINT



SAFETY CHAIN

One required for each end of each walkway.

- ③ 3/16" Type 304L stainless steel chain, approximately 12 links per foot.

NUMBER	REVISION	DATE

TRI-S-8 12-1-08