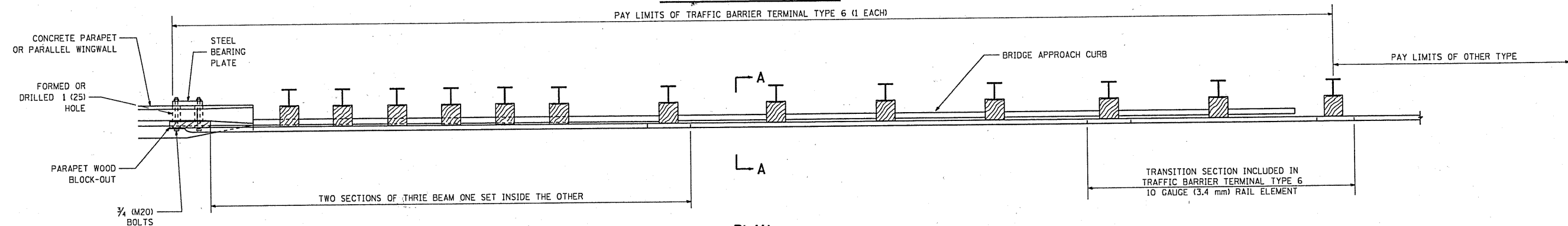
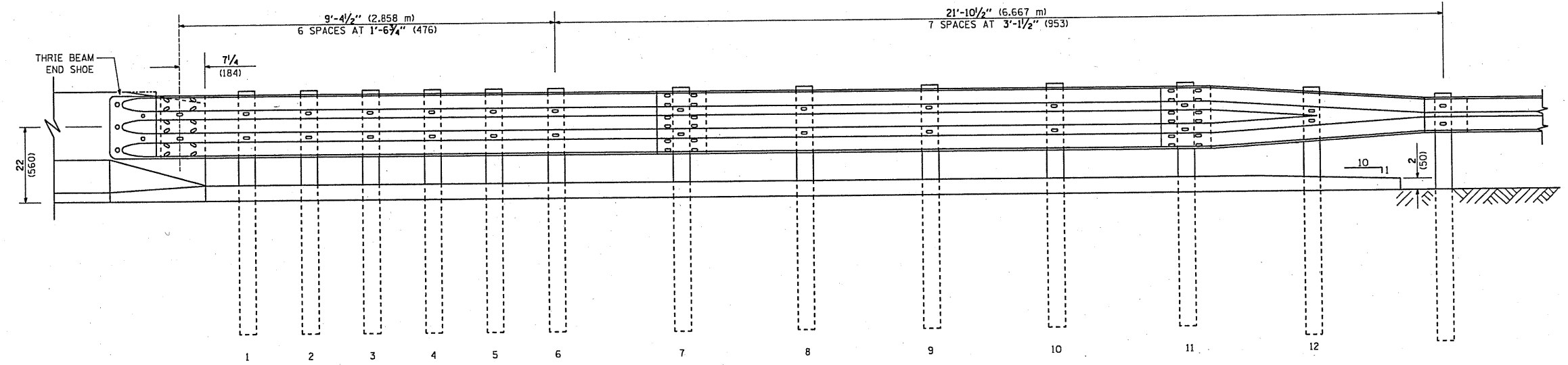


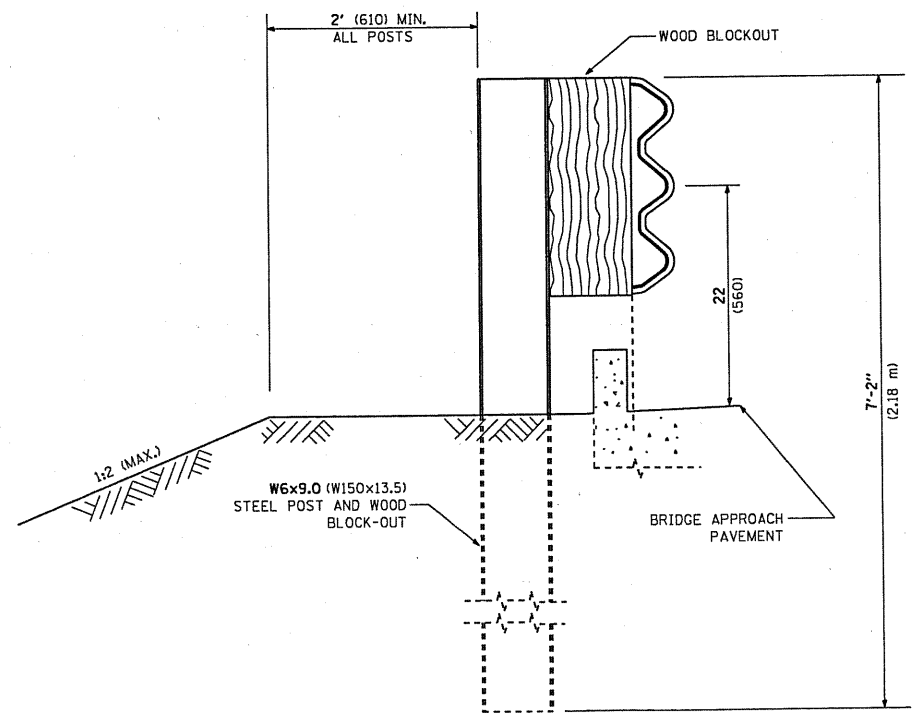
PARAPET OR WINGWALL



PLAN



ELEVATION



SECTION A-A

GENERAL NOTES
 TO BE USED WHEN CONNECTING TO EXISTING GUARD RAILING PRIOR TO THE MIDWEST GUARDRAIL SYSTEM.
 SEE STANDARD 630001 FOR DETAILS OF GUARDRAIL NOT SHOWN.
 THRIE BEAM RAIL SHALL BE BOLTED TO BLOCK-OUT AT ALL POSTS.
 SEE STANDARD 420401 FOR DETAILS OF BRIDGE APPROACH PAVEMENT.
 ALL SLOPE RATIOS ARE EXPRESSED AS UNITS OF VERTICAL DISPLACEMENT TO UNITS OF HORIZONTAL DISPLACEMENT (V:H).
 ALL DIMENSIONS ARE IN INCHES (MILLIMETERS) UNLESS OTHERWISE SHOWN.

FILE NAME =	USER NAME = midy.je	DESIGNED -	REVISED - STATE STANDARD:
es:\pwork\pwork\midy.je\0213082\01st5.dgn		DRAWN -	631031-05 - 02/19/2008
	PLOT SCALE = 100.0000' / IN.	CHECKED -	REVISED -
	PLOT DATE = 7/22/2010	DATE -	REVISED -

STATE OF ILLINOIS
 DEPARTMENT OF TRANSPORTATION

TYPE 6 TERMINAL	
FOR USE WITH 21" HIGH SPBGR	
SCALE: NONE	SHEET NO. 1 OF 3 SHEETS
STA.	TO STA.

F.A. RTE. VAR.	SECTION 2010-057 GRR	COUNTY VAR.	TOTAL SHEETS 22	SHEET NO. 19
BM 22			CONTRACT NO. 60L35	
FED. ROAD DIST. NO. 1 ILLINOIS FED. AID PROJECT				