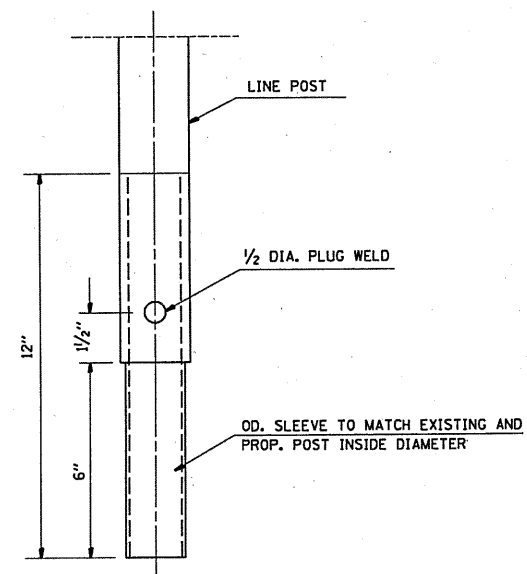
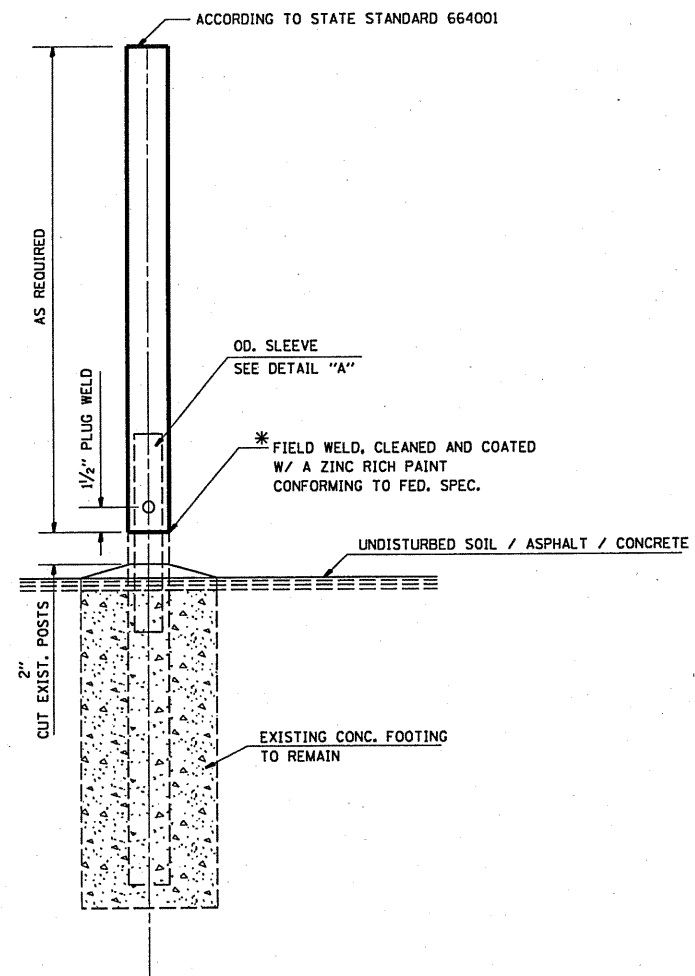


GENERAL NOTES:

THIS WORK CONSISTS OF FURNISHING ALL LABOR, MATERIALS, TOOLS AND EQUIPMENT TO REPAIR CHAIN LINK FENCE POST SLEEVE AS SHOWN ON THE PLANS OR AS DIRECTED BY THE ENGINEER, AND IN ACCORDANCE WITH STATE STANDARD 664001.

BASIS OF PAVEMENT: THIS WORK SHALL BE PAID FOR AT THE CONTRACT UNIT PRICE EACH FOR "CHAIN LINK FENCE POST SLEEVE REPAIR" WHICH PRICE SHALL BE PAYMENT IN FULL TO COMPLETE THE WORK AS SPECIFIED HEREIN.



**SLEEVE DET. DWG**  
DETAIL "A"  
SLEEVE DETAIL

\* THIS WORK SHALL BE INCLUDED IN THE COST OF THE PAY ITEM "CHAIN LINK FENCE POST SLEEVE REPAIR"

|  |                    |            |           |
|--|--------------------|------------|-----------|
| FILE NAME =                              | USER NAME = midyjo | DESIGNED - | REVISED - |
| cr\pwork\pwork\midyjo\0213131\Design.dgn |                    | DRAWN -    | REVISED - |
| PLOT SCALE = 100.000' / IN.              |                    | CHECKED -  | REVISED - |
| PLOT DATE = 8/4/2010                     |                    | DATE -     | REVISED - |

**STATE OF ILLINOIS**  
**DEPARTMENT OF TRANSPORTATION**

**CHAIN LINK FENCE POST SLEEVE**  
**REPAIR DETAIL**

|                     |            |                           |              |           |
|---------------------|------------|---------------------------|--------------|-----------|
| F.A. RTE.           | SECTION    | COUNTY                    | TOTAL SHEETS | SHEET NO. |
| VAR                 | 2010-059-1 | VARIOUS                   | 14           | 11        |
| CONTRACT NO. 60L37  |            |                           |              |           |
| FED. ROAD DIST. NO. |            | ILLINOIS FED. AID PROJECT |              |           |

SCALE: SHEET NO. OF SHEETS STA. TO STA.