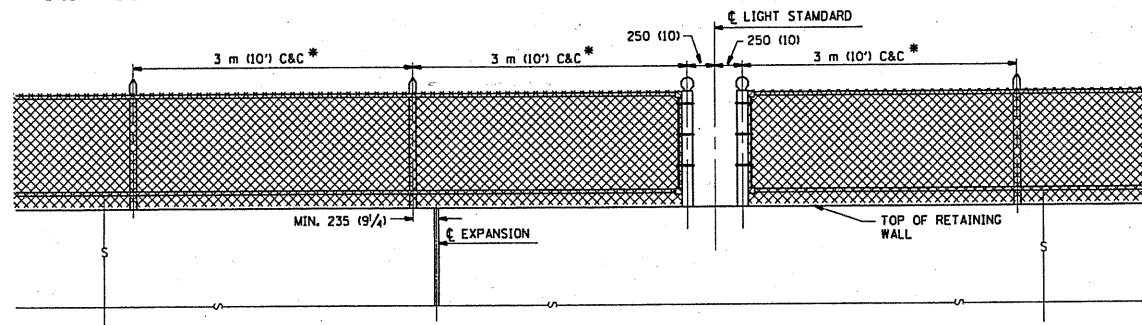


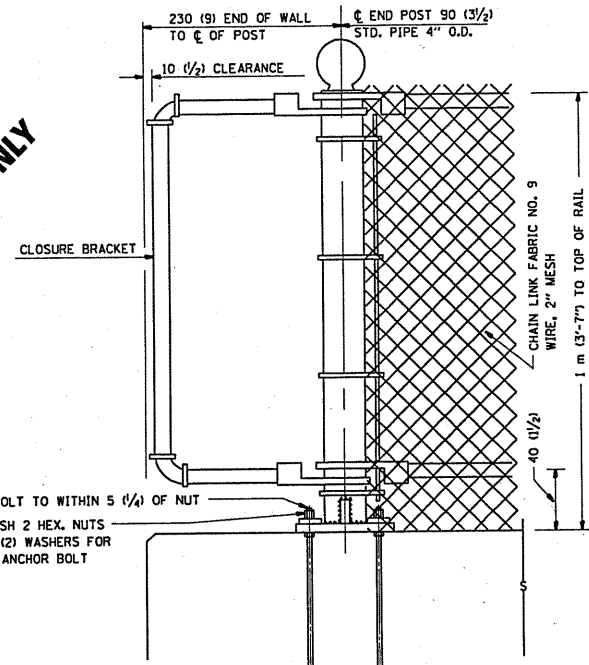
NOTE

* MAXIMUM POST SPACING SHALL BE 3 m (10') C&C EXCEPT WHERE OTHERWISE SHOWN ON PLANS



ELEVATION VIEW OF RETAINING WALL WITH PEDESTRIAN BARRIER TYPE III

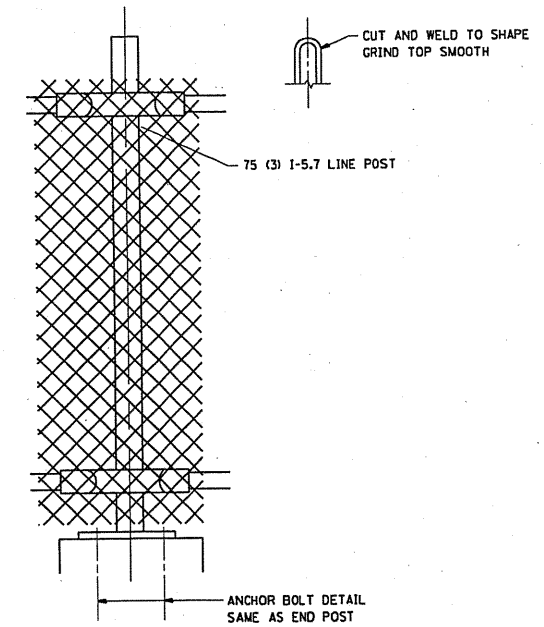
FOR INFORMATIONAL PURPOSES ONLY



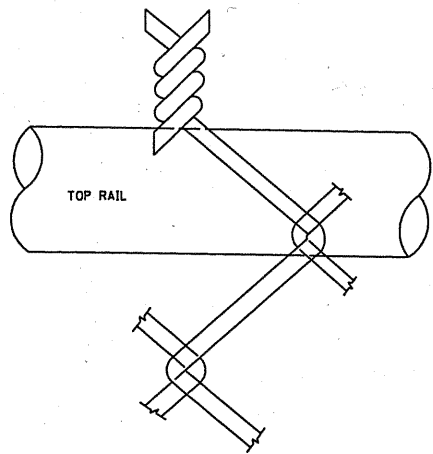
20 (3/4) Ø 360 (1'-2") ANCHOR BOLTS FURNISH 4 BOLTS EACH POST PLACE BOLTS IN FORM BEFORE POURING WALL CONCRETE.

END POST

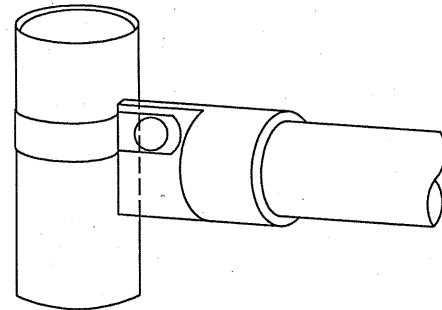
NOTE:
THE COST OF FURNISHING ANCHOR BOLTS, NUTS, & WASHERS TO BE INCIDENTAL



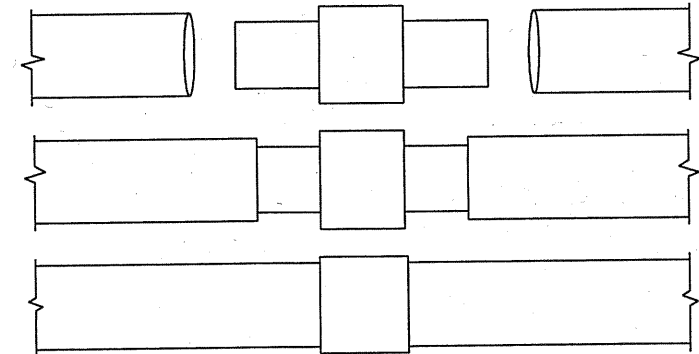
LINE POST



WIRE MESH FABRIC TO BE BARBED AT THE TOP

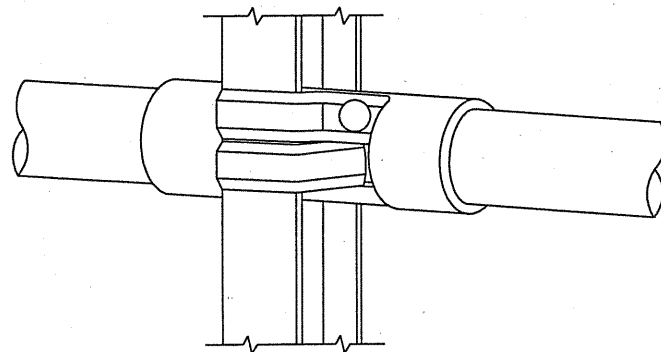


RAIL FITTING AT END POSTS

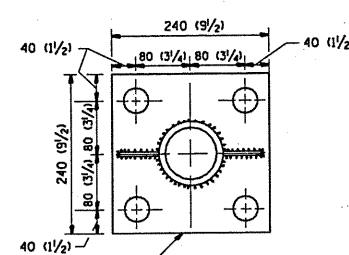


EXPANSION COUPLING DETAIL

NOTE:
EXP. COUPLING TO APPEAR IN TOP AND BOTTOM RAILS WHERE EVER EXP. JT. APPEARS IN STRUCTURE.



RAIL FITTING ON SECTION LINE POST



240 (9 1/2) x 80 (3 1/4) x 240 (9 1/2) BASE R
4-30 (1 1/4) Ø HOLES FOR END & LINE POSTS

ANCHOR PLATE DETAILS

NOTE:
POST, PLATE AND GUSSET ASSEMBLY SHALL BE GALVANIZED AFTER ALL CUTTING, DRILLING, WELDING, AND FABRICATION HAVE BEEN COMPLETED. THE GALVANIZED COATING SHALL CONFORM TO THE REQUIREMENTS OF AASHTO M 120. THE GALVANIZED COATING SHALL NOT BE LESS THAN 610 G/50 M (2.0 OZ./SQ. FT.) OF SURFACE.

ALL DIMENSIONS ARE IN MILLIMETERS (INCHES) UNLESS OTHERWISE SHOWN.

FILE NAME =	USER NAME = mjdjje	DESIGNED -	REVISED -	STATE OF ILLINOIS DEPARTMENT OF TRANSPORTATION	PEDESTRIAN BARRIER TYPE III STD. 10-SS-514 R	F.A. RTE.	SECTION	COUNTY	TOTAL SHEETS	SHEET NO.
es:\pv_work\pawdot\mjdjje\8213155\Design.dgn	DRAWN -	REVISED -	VAR			2010-060-1	VARIOUS	13	8	
PLOT SCALE = 1/8" = 1' IN.	CHECKED -	REVISED -	CONTRACT NO. 60L38							
PLOT DATE = 8/4/2018	DATE -	REVISED -	SCALE:			SHEET NO.	OF SHEETS	STA.	TO STA.	FED. ROAD DIST. NO.