

ROUTE	SECTION	COUNTY	TOTAL SHEETS	SHEET NUMBER
FAP 352 & FAU 2612	2010-088- BP	COOK AND LAKE	25	1

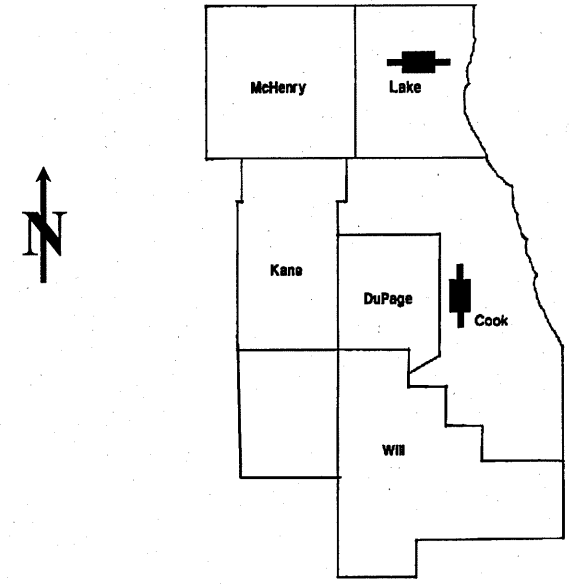
FOR INDEX OF SHEETS SEE SHEET 2

CONTRACT NO. 60L84

D-91-041-11

**IMPROVEMENTS ARE LOCATED IN
THE VILLAGES OF
LEMONT AND LIBERTYVILLE**

**STATE OF ILLINOIS
DEPARTMENT OF TRANSPORTATION
DIVISION OF HIGHWAYS
DISTRICT ONE
PROPOSED HIGHWAY PLANS**



**LOC 1) FAP RTE. 352: IL 137 (BUCKLEY RD.)
OVER THE DESPLAINES RIVER (SN 049-0063)**

LOCATION OF IMPROVEMENT INDICATED THUS: [Symbol]

**LOC 2) FAU RTE. 2612: LEMONT RD.
OVER THE S&S AND I&M CANALS & RR
AND DESPLAINES RIVER (SN 016-2504)
SECTION 2010-088-BP
BRIDGE PAINTING
COOK AND LAKE COUNTIES
C-91-041-11**

**STATE OF ILLINOIS
DEPARTMENT OF TRANSPORTATION
DIVISION OF HIGHWAYS**
 SUBMITTED: August 26th 2010
Dir O'Leary
 DEPUTY DIRECTOR OF HIGHWAYS, REGION ENGINEER
October 1 2010
Scott E. Stitt P.E.
 acting ENGINEER OF DESIGN AND ENVIRONMENT
October 1 2010
Christine M. Reeder
 DIRECTOR, DIVISION OF HIGHWAYS

**PRINTED BY THE AUTHORITY
OF THE STATE OF ILLINOIS**

**J.U.L.I.E.: JOINT UTILITY LOCATION
INFORMATION FOR EXCAVATION
(800) 892-0123 OR 811**

**PROJECT ENGINEER ROBERT BORO (847) 705-4178
PROJECT MANAGER ISSAM RAYYAN**

CONTRACT NO. 60L84

ROUTE	SECTION	COUNTY	TOTAL SHEETS	SHEET NUMBER
FAP 352 & FAU 2612	2010-088 BP	COOK AND LAKE	25	2

CONTRACT NO. 60L84

INDEX OF SHEETS

- 1 TITLE SHEET
- 2 INDEX OF SHEETS, STATE STANDARDS AND GENERAL NOTES
- 3 GENERAL PAINT NOTES
- 4 SUMMARY OF QUANTITIES
- 5-6 LOCATION MAPS
- 7-21 EXISTING BRIDGE PLANS (BRIDGE NO. 1, SN 049-0063)
- 22-23 EXISTING BRIDGE PLANS (BRIDGE NO. 2, SN 016-2504)
- 24 TRAFFIC CONTROL FOR SHOULDERS CLOSURES AND PARTIAL RAMP CLOSURES (TC-17)
- 25 ARTERIAL ROAD INFORMATION SIGN (TC-22)

STATE STANDARDS

- 701101-02 MULTILANE OFF-ROAD OPERATIONS, 15' TO 24" FROM PAVEMENT EDGE
- 701201-03 LANE CLOSURE, 2L, 2W, DAY ONLY, FOR SPEEDS GREATER THAN OR EQUAL TO 45 MPH.
- 701301-03 LANE CLOSURE, 2L, 2W, SHORT TIME OPERATIONS
- 701601-06 URBAN LANE CLOSURE, MULTILANE, 1W OR 2W WITH NONTRAVERSABLE MEDIUM
- 701801-04 LANE CLOSURE MULTILANE 1W OR 2W CROSSWALK OR SIDEWALK CLOSURE
- 701901-01 TRAFFIC CONTROL DEVICES

GENERAL NOTES

BEFORE STARTING ANY EXCAVATION, THE CONTRACTOR SHALL CALL "J.U.L.I.E." AT (800) 892-0123 OR 811 FOR FIELD LOCATIONS OF BURIED ELECTRIC, TELEPHONE AND GAS UTILITIES. 48 HOURS NOTIFICATION IS REQUIRED.

THE CONTRACTOR SHALL COORDINATE CONSTRUCTION ACTIVITIES WITH UTILITY COMPANIES, THE VILLAGES OF LEMONT AND LIBERTYVILLE.

IT SHALL BE THE CONTRACTOR'S RESPONSIBILITY TO VERIFY ALL DIMENSIONS & CONDITIONS EXISTING IN THE FIELD PRIOR TO CONSTRUCTION & ORDERING OF MATERIALS.

THE CONTRACTOR WILL NOT BE ALLOWED TO SET UP A YARD OR FIELD OFFICE ON STATE PROPERTY WITHOUT WRITTEN PERMISSION FROM THE DEPARTMENT.

THE CONTRACTOR SHALL CONTACT THE DISTRICT ONE TRAFFIC CONTROL SUPERVISOR AT (847) 705-4470 A MINIMUM OF 72 HOURS IN ADVANCE OF BEGINNING WORK.

THE CONTRACTOR SHALL BE REQUIRED TO PROVIDE ACCESS TO ABUTTING PROPERTY AT ALL TIMES DURING THE CONSTRUCTION OF THIS PROJECT.

DO NOT SCALE PLANS FOR CONSTRUCTION DIMENSIONS.

ILLINOIS DEPARTMENT OF
TRANSPORTATION

GENERAL NOTES
INDEX OF SHEETS
STATE STANDARDS

ROUTE	SECTION	COUNTY	TOTAL SHEETS	SHEET NUMBER
FAP 352 & FAU 2612	2010-088-BP	COOK AND LAKE	25	3

CONTRACT NO. 60L84

GENERAL NOTES FOR PAINT

CLEANING AND PAINTING OF THE EXISTING STRUCTURAL STEEL SHALL BE AS SPECIFIED IN THE SPECIAL PROVISION FOR "CLEANING AND PAINTING EXISTING STEEL STRUCTURES".

A MINIMUM OF FOUR (4) AIR MONITORS WILL BE REQUIRED TO MONITOR ABRASIVE BLASTING OPERATIONS FOR ALL STRUCTURES. SEE SPECIAL PROVISION FOR "CONTAINMENT AND DISPOSAL OF LEAD PAINT CLEANING RESIDUE."

THE AREAS DESIGNATED TO BE CLEANED PER NEAR WHITE BLAST CLEANING SSPC-SP10 SHALL BE PAINTED ACCORDING TO THE REQUIREMENTS OF PAINT SYSTEM 1 – OZ/E/U. THE COLOR OF THE FINAL FINISH COAT FOR ALL INTERIOR STEEL SURFACES SHALL BE GRAY , MUNSELL NO. 5B 7/1. THE COLOR OF THE FINAL FINISH COAT FOR THE EXTERIOR AND BOTTOM FLANGE OF THE BEAMS SHALL MATCH THE FEDERAL COLOR STANDARD 595a 20045.

ALL ITEMS (SUCH AS, BUT NOT LIMITED TO: CONDUITS, BRACKETS AND DECK DRAINS) ATTACHED TO THE OUTSIDE OF THE FASCIA BEAMS SHOULD BE CLEANED AND PAINTED.

ALL BEAMS, DIAPHRAGMS, BEARINGS AND OTHER STRUCTURAL STEEL WITHIN TEN (10) FT., (MEASURED ALONG THE BEAM) OF EITHER SIDE OF ALL DECK JOINTS, SHALL BE CLEANED PER NEAR WHITE BLAST CLEANING SSPC-SP10.

ILLINOIS DEPARTMENT OF TRANSPORTATION

GENERAL PAINT NOTES

ROUTE	SECTION	COUNTY	TOTAL SHEETS	SHEET NUMBER
FAP 352 & FAU 2612	2010-088-BP	COOK AND LAKE	25	4

CONTRACT NO. 60L84

SUMMARY OF QUANTITIES

CODE NO	DESCRIPTION	UNITS	URBAN 100% STATE TOTAL	CONSTRUCTION TYPE CODE: 0014			
				LAKE COUNTY FAP 352	COOK COUNTY FAU 2612		
				BRIDGE NO.1 SN 049-0063	BRIDGE NO. 2 SN 016-2504		
Z0010501	CLEANING AND PAINTING STEEL BRIDGE NO. 1	L SUM	1	1			
Z0010502	CLEANING AND PAINTING STEEL BRIDGE NO. 2	L SUM	1		1		
Z0007112	CONTAINMENT AND DISPOSAL OF LEAD PAINT CLEANING RESIDUES	L SUM	1	0.1	0.9		
67000400	ENGINEER'S FIELD OFFICE, TYPE A	CAL MO	4	1	3		
67100100	MOBILIZATION	L SUM	J	0.75	0.25		
70100450	TRAFFIC CONTROL AND PROTECTION, STANDARD 701201	L SUM	1	1			
70102630	TRAFFIC CONTROL AND PROTECTION, STANDARD 701601	L SUM	1		1		
Z0030850	TEMPORARY INFORMATION SIGNING	SQ FT	102.8	51.4	51.4		
Z0048665	RAILROAD PROTECTIVE LIABILITY INSURANCE	L SUM	1		1		

ILLINOIS DEPARTMENT OF
TRANSPORTATION

SUMMARY OF QUANTITIES

Rev.

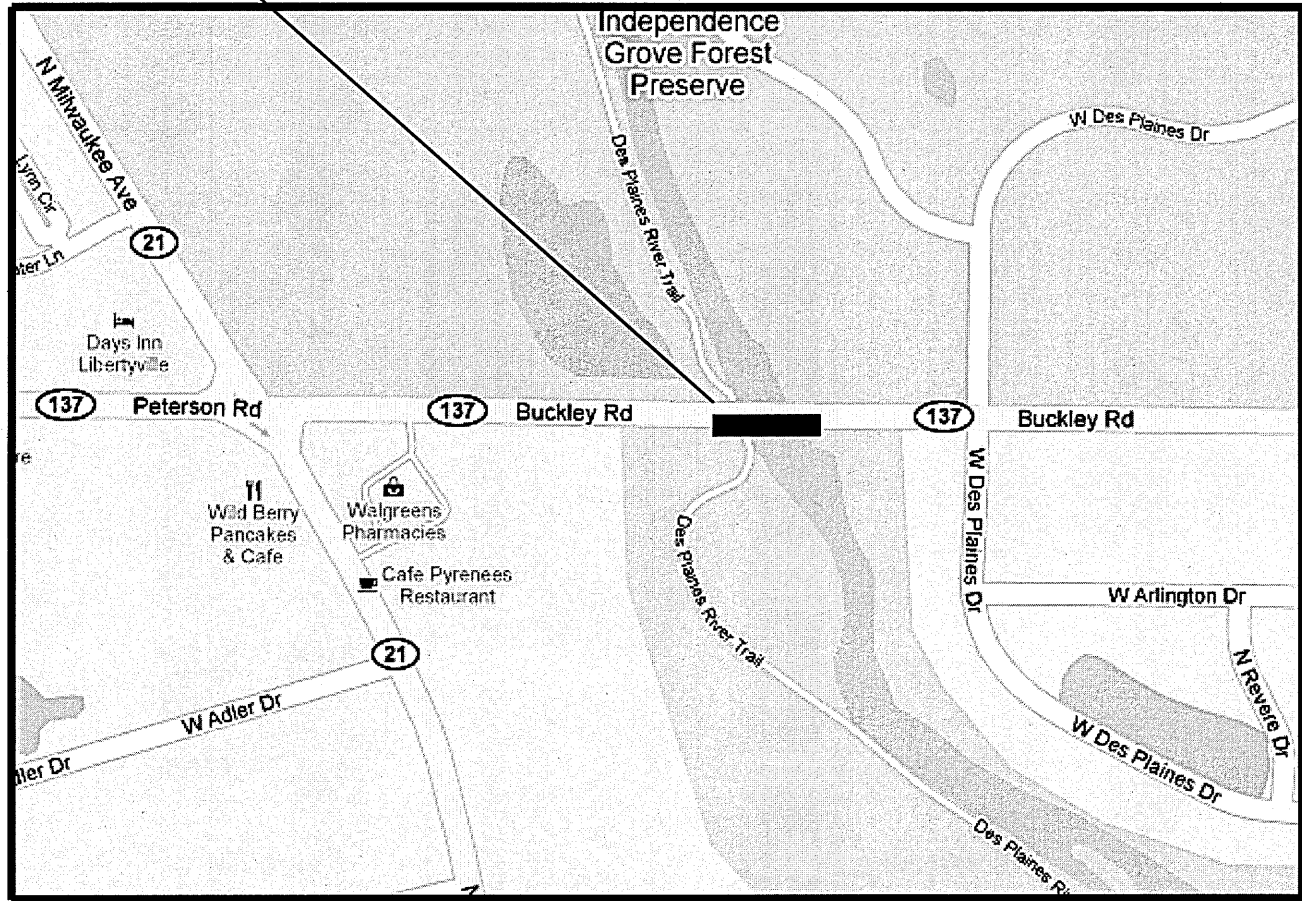
ROUTE	SECTION	COUNTY	TOTAL SHEETS	SHEET NUMBER
FAU 2612 & FAP 352	2010-088-BP	COOK AND LAKE	25	5

CONTRACT NO. 60L84

LOCATION 1 (SN 049-0063)
 US 137
 OVER DESPLAINES RIVER
 VILLAGE OF LIBERTYVILLE

R 11E

T 44N



LIBERTYVILL TOWNSHIP
 LAKE COUNTY

TRAFFIC DATA

2006 ADT = 26300
 POSTED SPEED LIMIT = 45 MPH

ILLINOIS DEPARTMENT OF TRANSPORTATION
 LOCATION MAP
 LOCATION 1: SN 049-0063

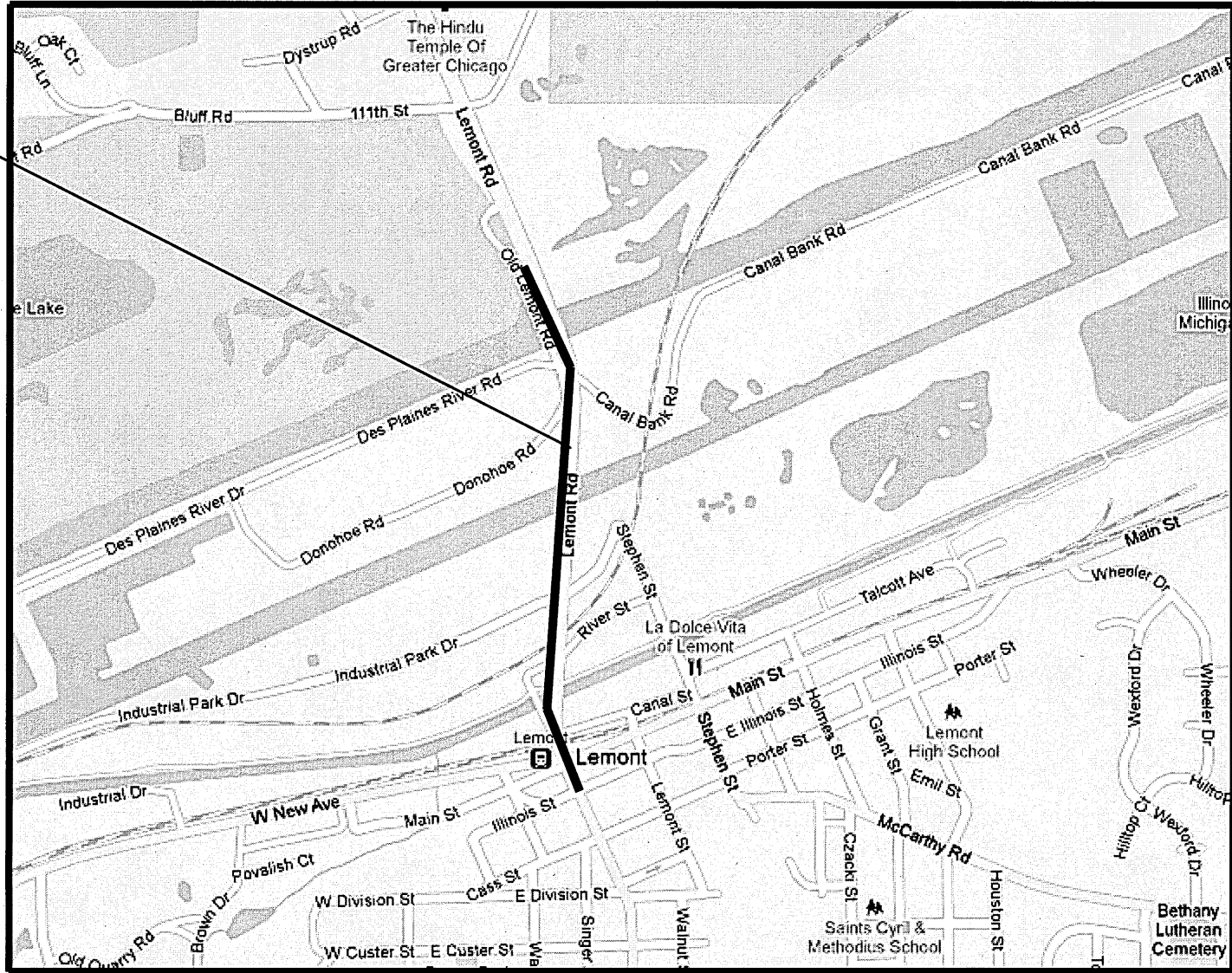
ROUTE	SECTION	COUNTY	TOTAL SHEETS	SHEET NUMBER
FAU 2612 & FAP 352	2010-088-BP	COOK AND LAKE	25	6

CONTRACT NO. 60L84

**LOCATION 2 (SN 016-2504)
LEMONT RD.
OVER S&S AND I&M CANALS,
RR & DESPLAINES RIVER
VILLAGE OF LEMONT**

R 11E

T 37N



TRAFFIC DATA

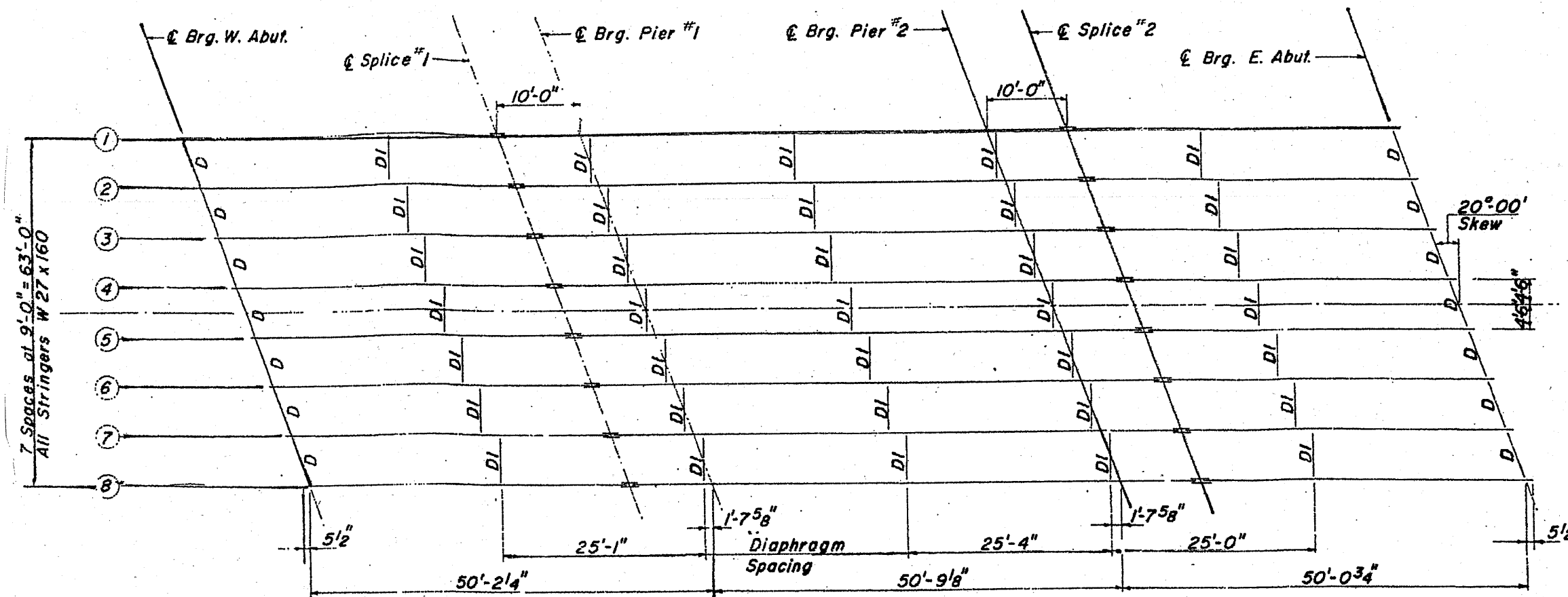
2006 ADT = 34100
POSTED SPEED LIMIT = 45 MPH

**LEMONT TOWNSHIP
COOK COUNTY**

**ILLINOIS DEPARTMENT OF TRANSPORTATION
LOCATION MAP
LOCATION 2: SN-016-2504**

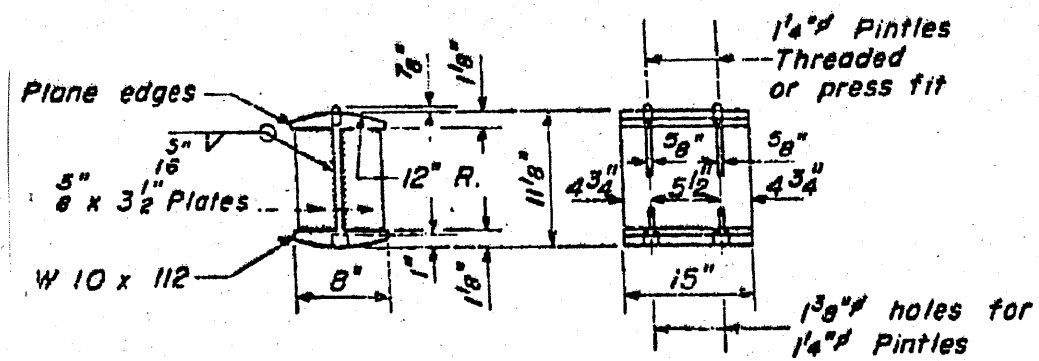
ROUTE	SECTION	COUNTY	TOTAL SHEETS	SHEET NUMBER
VARIOUS	2010-088-BP	COOK AND LAKE	25	8

CONTRACT NO. 60L84

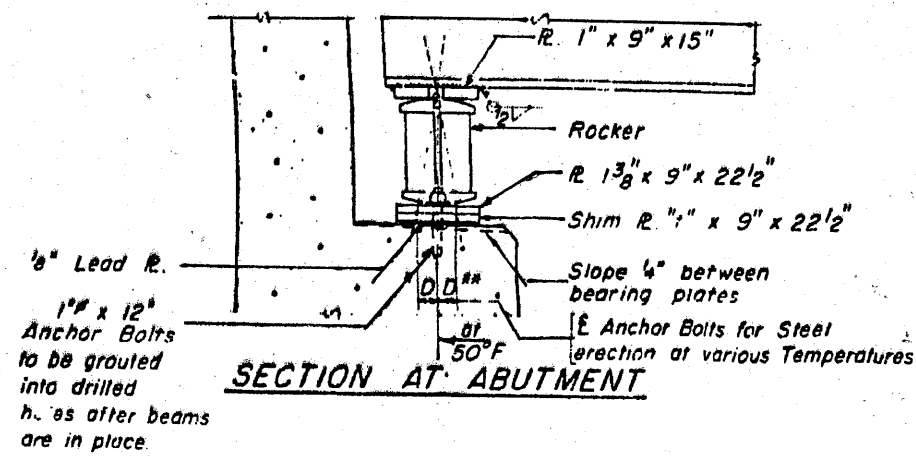


STRUCTURAL STEEL LAYOUT

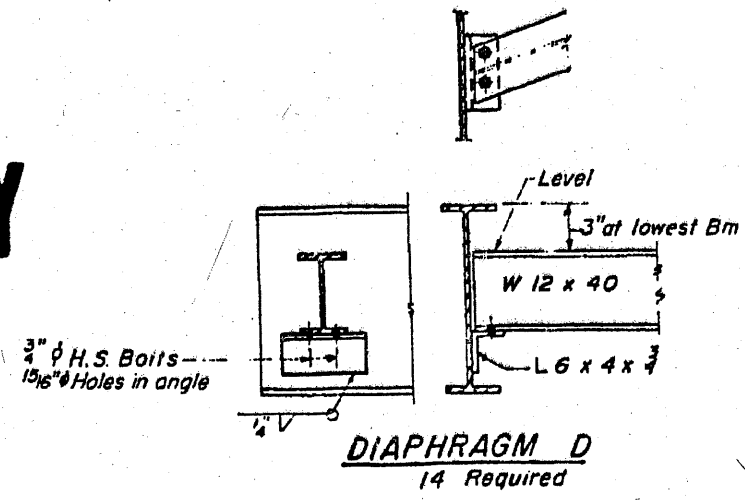
FOR INFORMATION ONLY



DETAIL OF ROCKER AT PIER 1 & ABUTS.



SECTION AT ABUTMENT



DIAPHRAGM D
14 Required

ILLINOIS DEPARTMENT OF
TRANSPORTATION

EXISTING BRIDGE PLAN
LOCATION 1: SN 049-0063

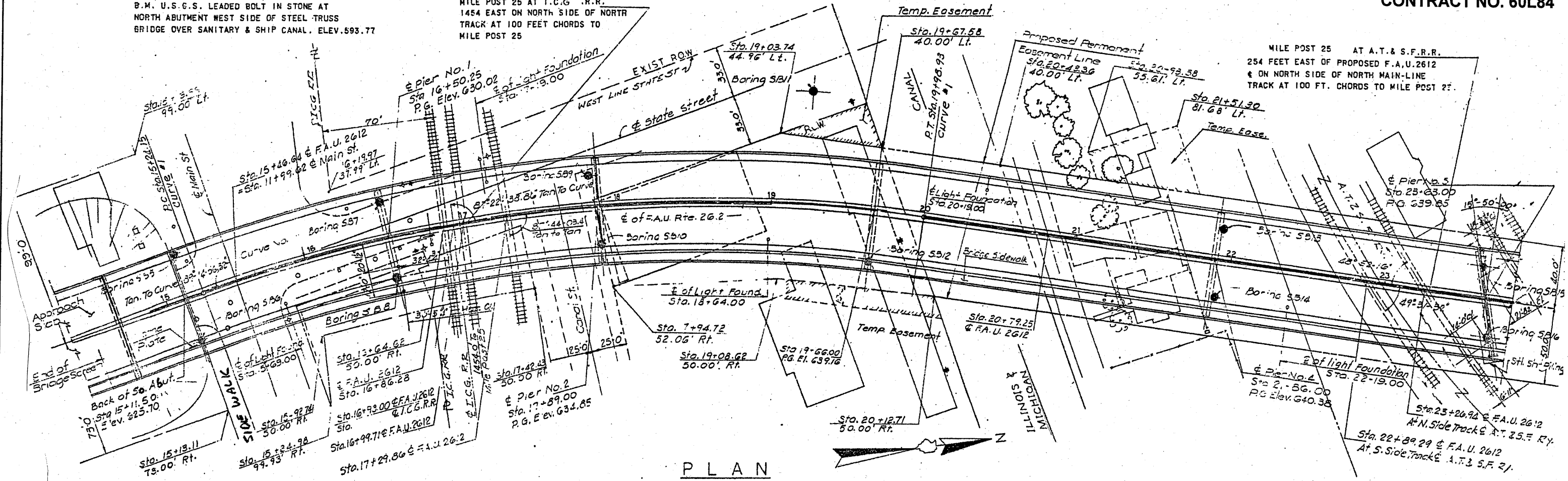
ROUTE	SECTION	COUNTY	TOTAL SHEETS	SHEET NUMBER
VARIOUS	2010-088-BP	COOK AND LAKE	25	9

CONTRACT NO. 60L84

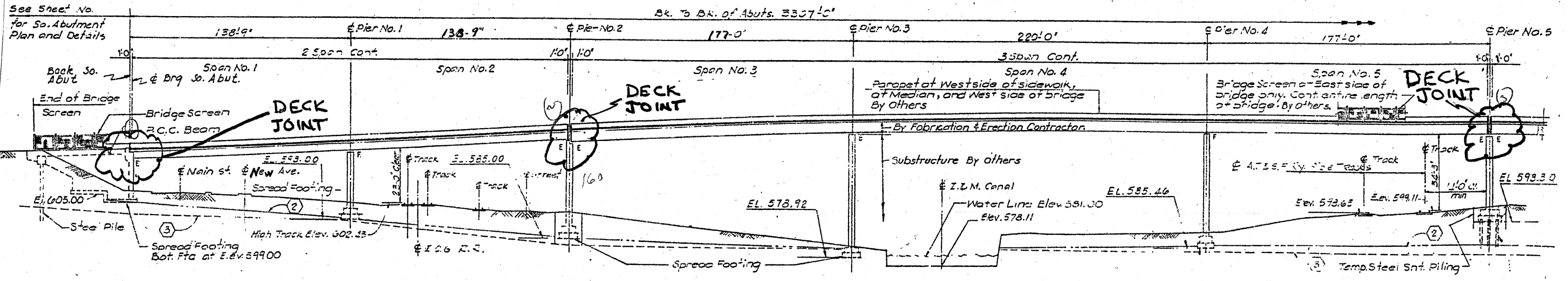
B.M. U.S.G.S. LEADED BOLT IN STONE AT NORTH ABUTMENT WEST SIDE OF STEEL TRUSS BRIDGE OVER SANITARY & SHIP CANAL. ELEV. 593.77

MILE POST 25 AT I.C.G. R.R. 1454 EAST ON NORTH SIDE OF NORTH TRACK AT 100 FEET CHORDS TO MILE POST 25

MILE POST 25 AT A.T. & S.F.R.R. 254 FEET EAST OF PROPOSED F.A.U. 2612 & ON NORTH SIDE OF NORTH MAIN-LINE TRACK AT 100 FT. CHORDS TO MILE POST 25



PLAN



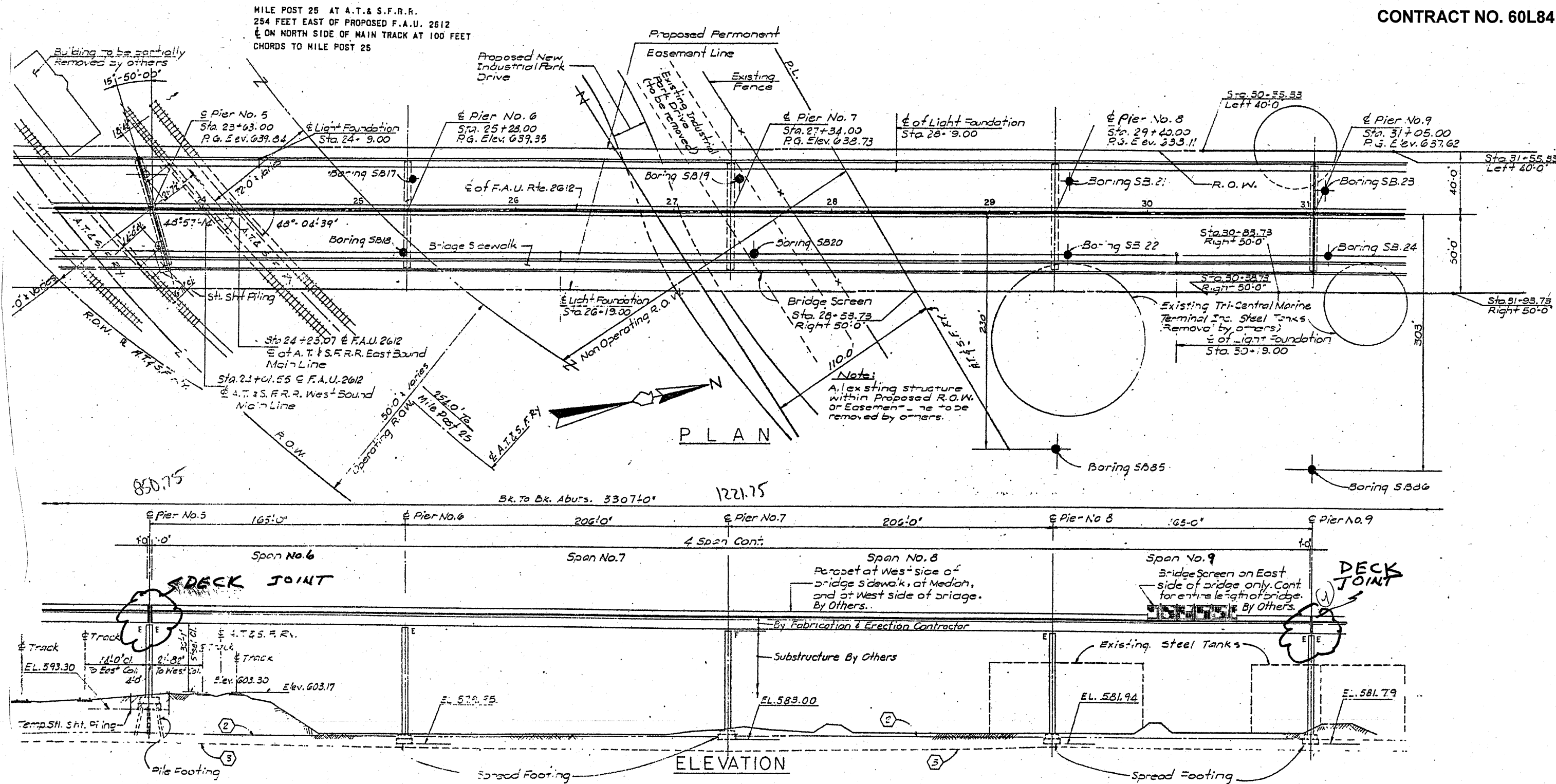
ELEVATION

FOR INFORMATION ONLY

ILLINOIS DEPARTMENT OF TRANSPORTATION
 EXISTING BRIDGE PLAN
 LOCATION 2: SN 016-2504

ROUTE	SECTION	COUNTY	TOTAL SHEETS	SHEET NUMBER
VARIOUS	2010-088-BP	COOK AND LAKE	25	10

CONTRACT NO. 60L84



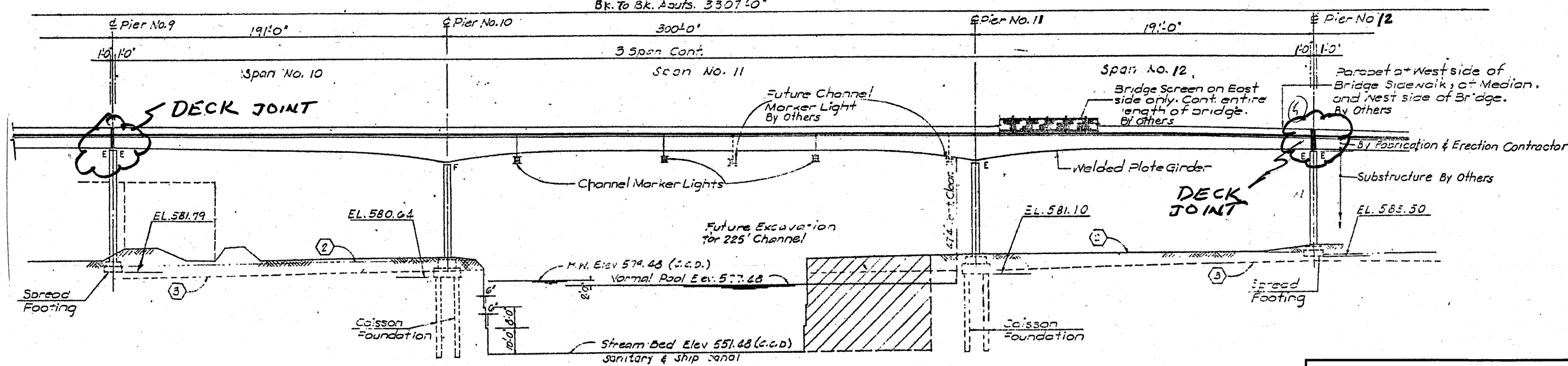
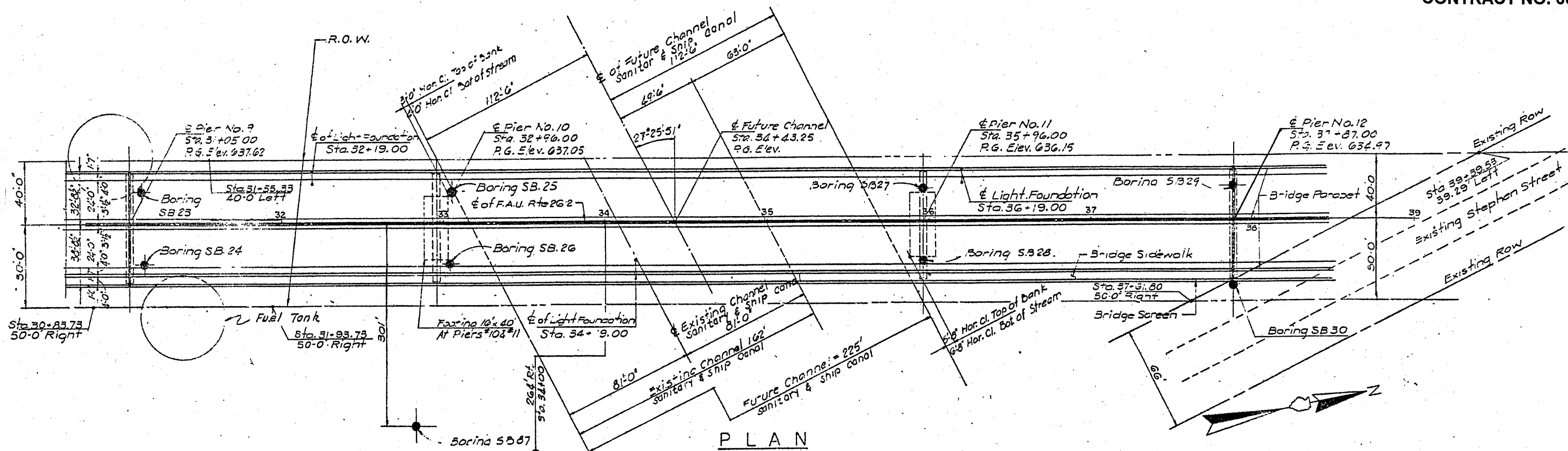
FOR INFORMATION ONLY

ILLINOIS DEPARTMENT OF
TRANSPORTATION

EXISTING BRIDGE PLAN
LOCATION 2: SN 016-2504

ROUTE	SECTION	COUNTY	TOTAL SHEETS	SHEET NUMBER
VARIOUS	2010-088-BP	COOK AND LAKE	25	11

CONTRACT NO. 60L84



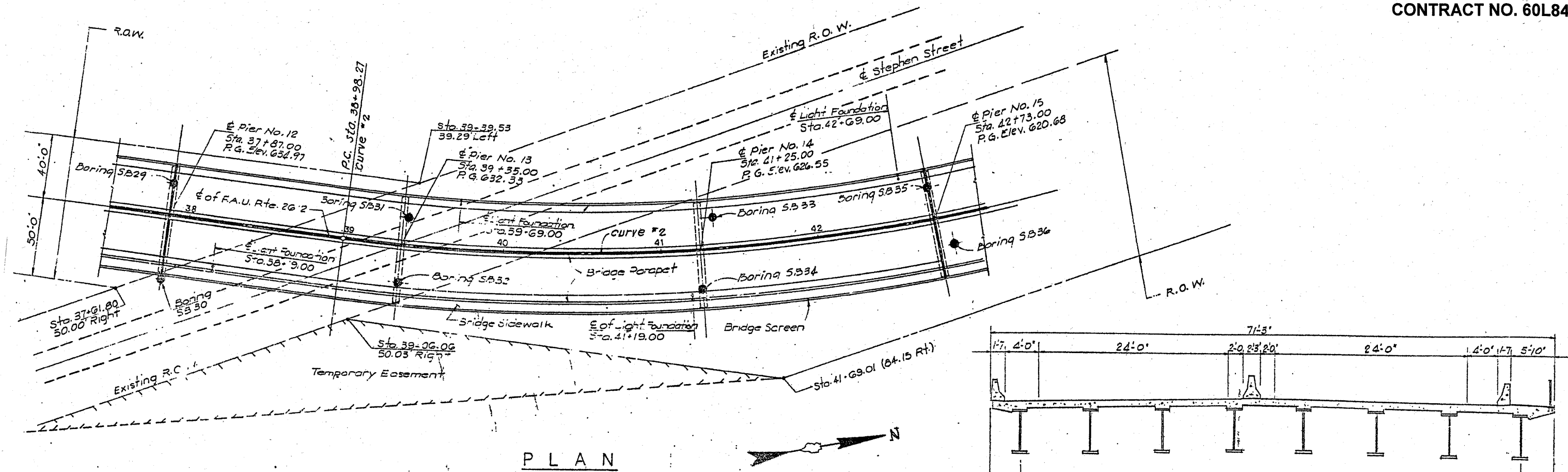
FOR INFORMATION ONLY

ILLINOIS DEPARTMENT OF
TRANSPORTATION

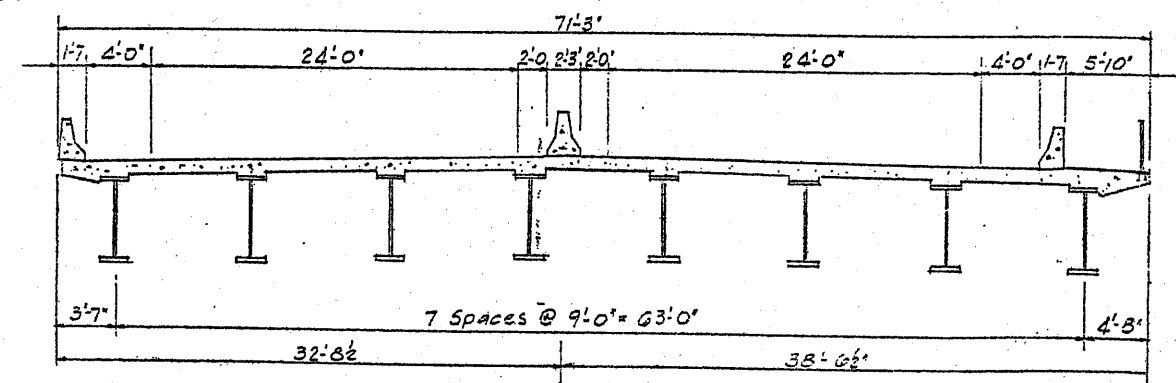
EXISTING BRIDGE PLAN
LOCATION 2: SN 016-2504

ROUTE VARIOUS	SECTION 2010-088-BP	COUNTY COOK AND LAKE	TOTAL SHEETS 25	SHEET NUMBER 12
------------------	------------------------	-------------------------	--------------------	--------------------

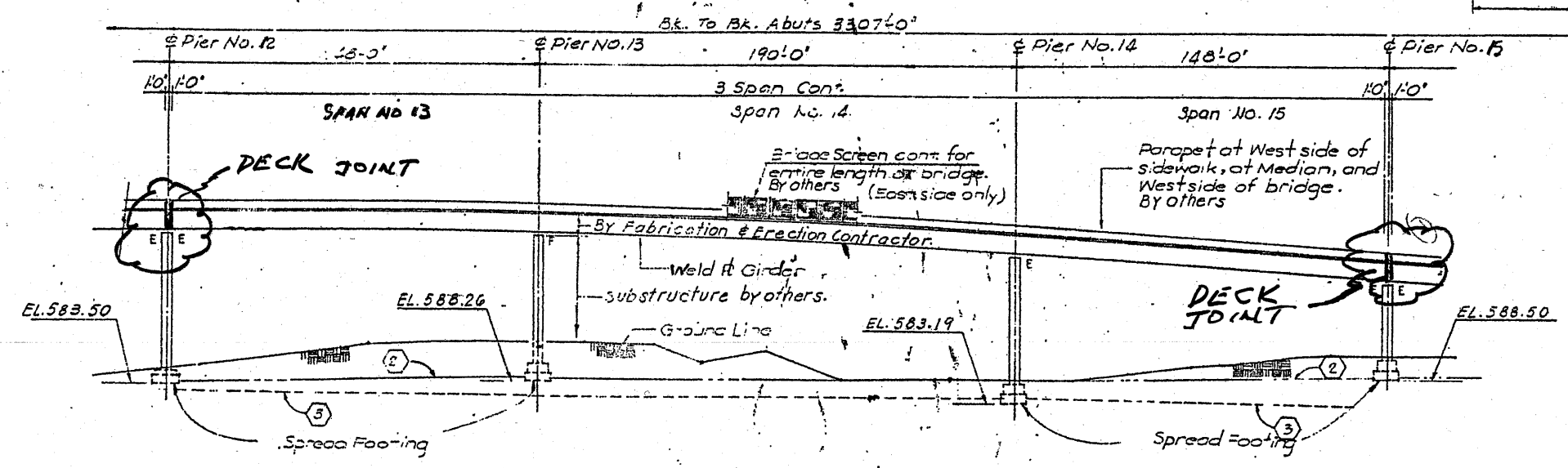
CONTRACT NO. 60L84



PLAN



TYPICAL DECK CROSS SECTION



ELEVATION

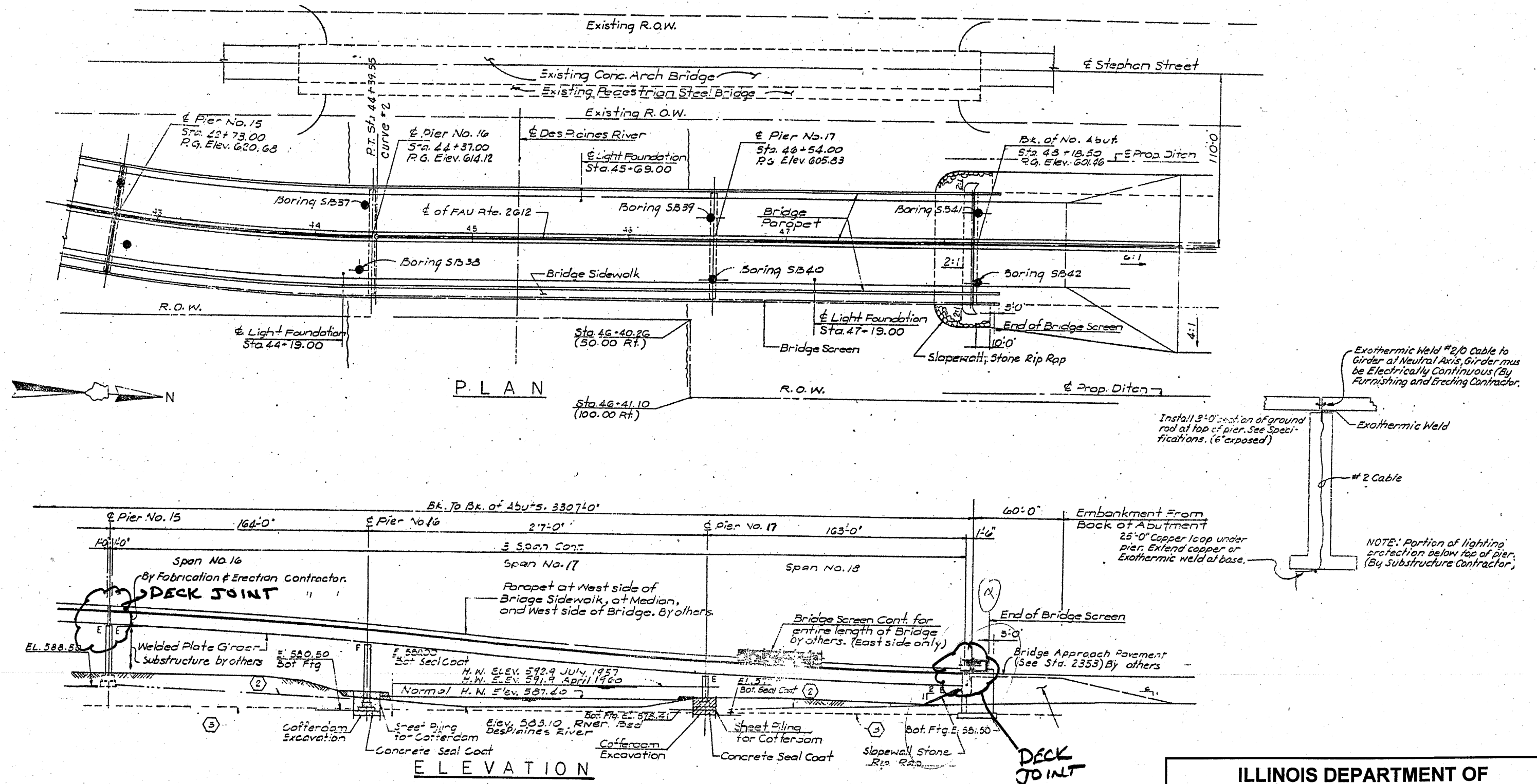
FOR INFORMATION ONLY

ILLINOIS DEPARTMENT OF
TRANSPORTATION

EXISTING BRIDGE PLAN
LOCATION 2: SN 016-2504

ROUTE VARIOUS	SECTION 2010-088-BP	COUNTY COOK AND LAKE	TOTAL SHEETS 25	SHEET NUMBER 13
------------------	------------------------	-------------------------	--------------------	--------------------

CONTRACT NO. 60L84



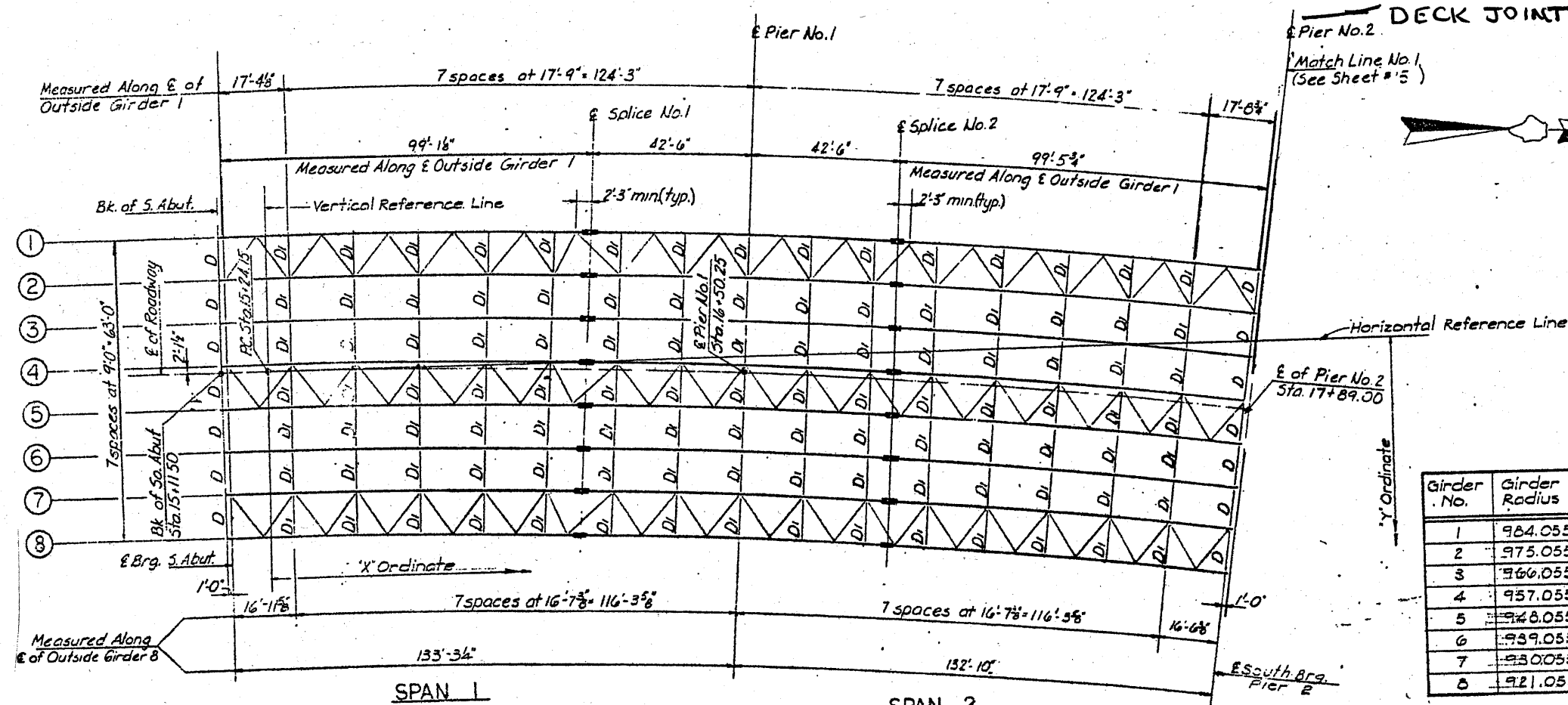
FOR INFORMATION ONLY

ILLINOIS DEPARTMENT OF
TRANSPORTATION

EXISTING BRIDGE PLAN
LOCATION 2: SN 016-2504

ROUTE	SECTION	COUNTY	TOTAL SHEETS	SHEET NUMBER
VARIOUS	2010-088-BP	COOK AND LAKE	25	14

CONTRACT NO. 60L84

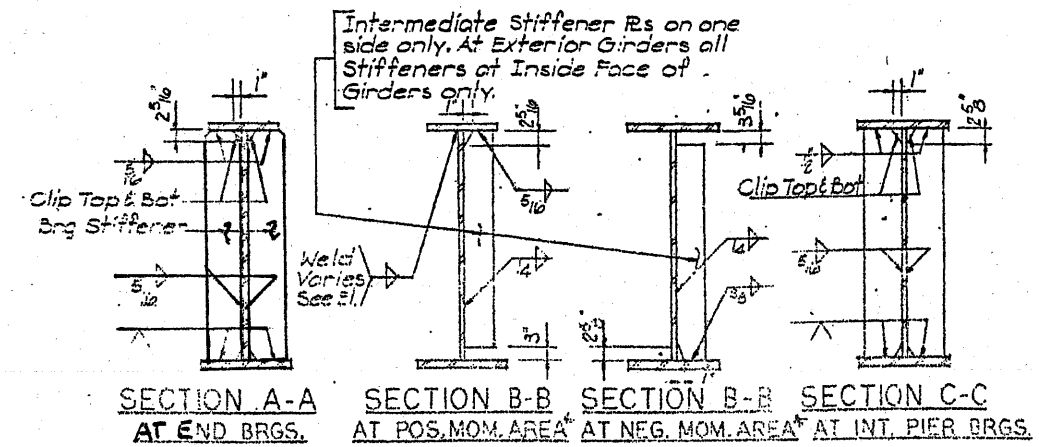
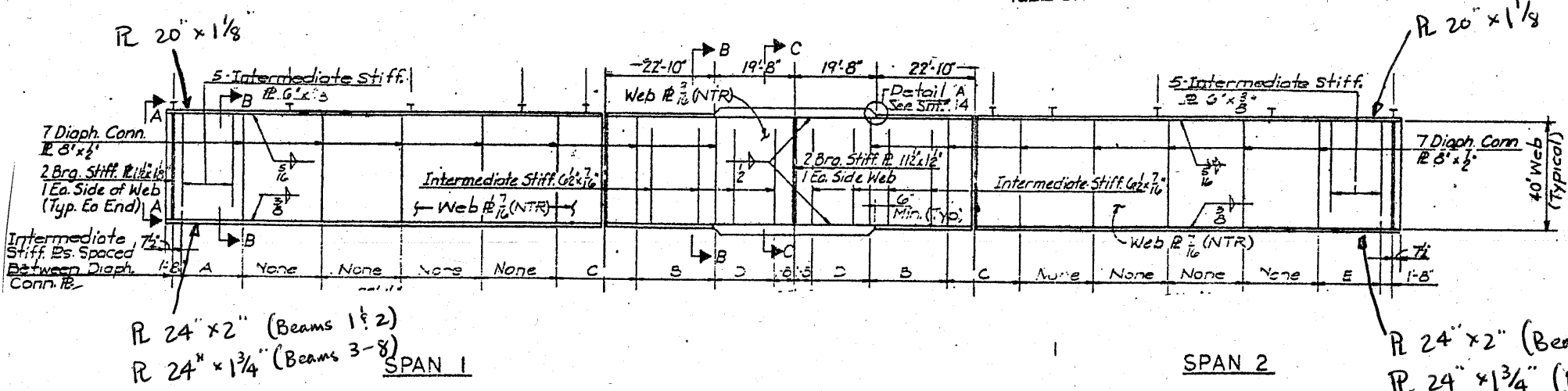


FOR INFORMATION ONLY

'X' & 'Y' ORDINATE TABLE

Girder No.	Girder Radius	Splice No. 1		E of Pier No. 1		Splice No. 2		E of S. Brg. Pier No. 2	
		"X"	"Y"	"X"	"Y"	"X"	"Y"	"X"	"Y"
1	984.055	+87.331	+25.242	+29.569	+20.585	+71.565	+14.054	+268.480	-8.208
2	975.055	+86.145	+16.312	+28.384	+11.636	+70.378	+5.124	+266.016	-16.864
3	966.055	+84.959	+7.382	+27.199	-2.714	+69.192	-3.806	+263.552	-25.520
4	957.055	+83.773	-1.549	+26.014	-6.207	+68.006	-12.737	+261.087	-34.176
5	948.055	+82.587	-10.479	+24.829	-15.129	+66.819	-21.667	+258.623	-42.832
6	939.055	+81.401	-19.410	+23.644	-24.051	+65.633	-30.598	+256.159	-51.488
7	930.055	+80.215	-28.341	+22.459	-32.972	+64.446	-39.529	+253.695	-60.144
8	921.055	+79.029	-37.272	+21.274	-41.894	+63.260	-48.460	+251.230	-68.800

Note:
For 'X' & 'Y' Ordinates to E of Bearings & Splices see Ordinate Table on this sheet.



GIRDER ELEVATION

Note:

- 4-3/8" Shear Studs Per Row (Typ)
- For Shear Studs Detail See Sht No. 14
- No. Shear Studs Required = 4504
- All distances measured horizontally along E of girder
- For details of Intermediate and Bearing Stiffeners see Sht. No. 14, C see sht. no. 14.
- For other misc details of Girders see sht 14.

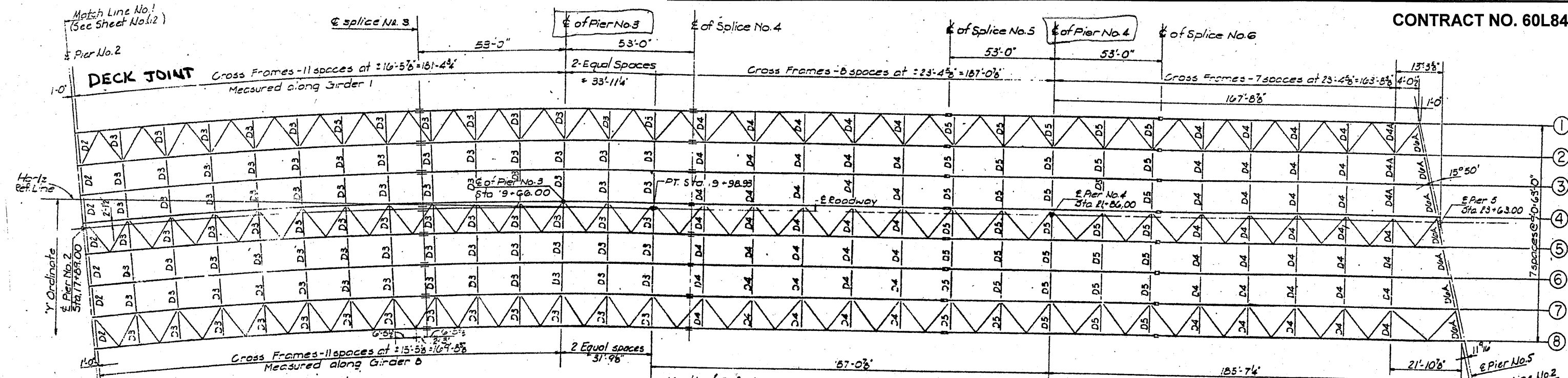
ILLINOIS DEPARTMENT OF TRANSPORTATION

EXISTING BRIDGE PLAN

LOCATION 2: SN 016-2504

ROUTE VARIOUS	SECTION 2010-088-BP	COUNTY COOK AND LAKE	TOTAL SHEETS 25	SHEET NUMBER 15
------------------	------------------------	-------------------------	--------------------	--------------------

CONTRACT NO. 60L84

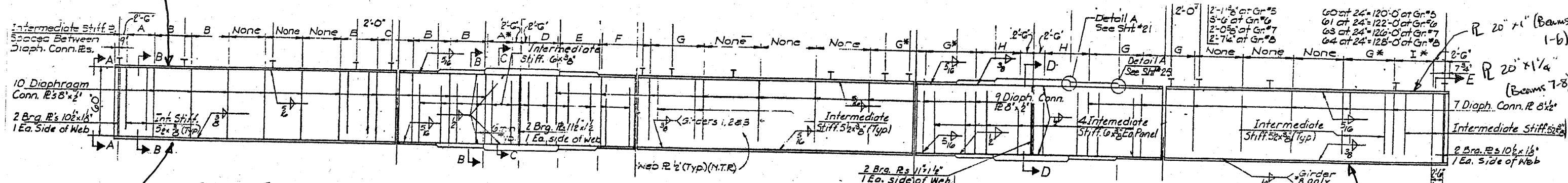


R 20" x 1 1/4" (Beams 1-3)
R 20" x 1" (Beams 4-8)

FRAMING PLAN

Note: For X & Y Ordinates to E of Brgs. & Splices see Ordinate Table on this sheet.

Note: All contact surfaces of joints for the diaphragms, cross frames and/or lateral bracings shall be free of paint or lacquer.



R 22" x 2 1/4" (Beams 1-3) SPAN 3
R 22" x 1 3/4" (Beams 4-8)

R 22" x 1 1/4" (Beams 1-6)
R 22" x 1" (Beams 7-8)
R 22" x 1 3/4" (Beams 1-6)
R 22" x 2 1/4" (Beam 7)
R 22" x 2 1/2" (Beam 8)

X & Y ORDINATE TABLE

Girder No.	Girder Radius	E of Pier No. 3		Splice No. 3		E. Brg. Pier No. 2	
		X	Y	X	Y	X	Y
1	064.055-33	928	+25.340	-56.321	+25.288	-213.618	+5.659
2	075.055-33	617	+9.545	-30.510	+16.280	-211.656	-3.134
3	066.055-33	307	+0.55	-56.199	+7.272	-209.693	-11.908
4	057.055-32	997	+1.350	-55.888	-1.737	-207.731	-20.691
5	048.055-32	686	-7.439	-85.576	-10.745	-205.768	-29.475
6	039.055-32	376	-12.333	-85.265	-19.754	-203.803	-38.258
7	030.055-32	66	-25.428	-84.954	-28.763	-201.843	-47.041
8	021.055-32	756	-34.423	-84.642	-37.774	-199.850	-55.825

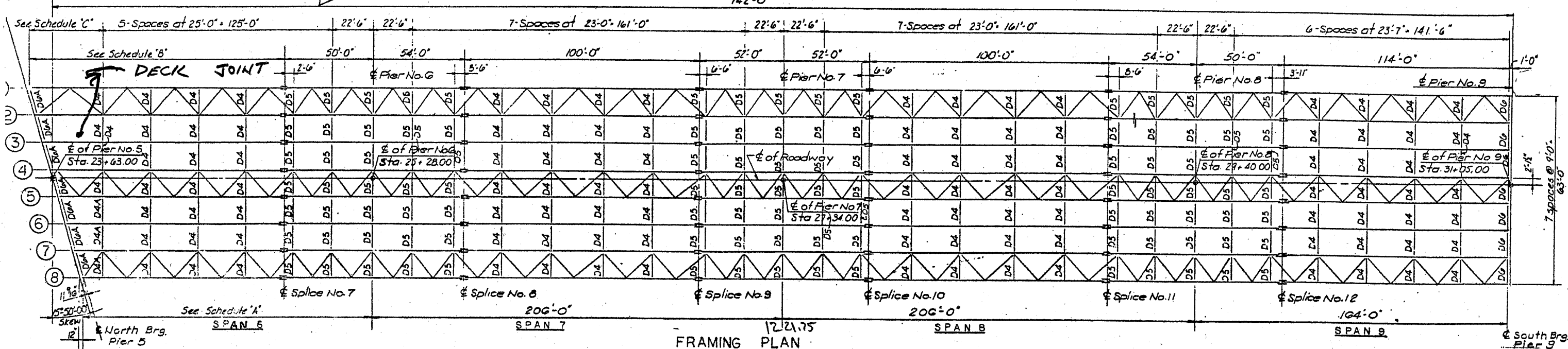
FOR INFORMATION ONLY

ILLINOIS DEPARTMENT OF TRANSPORTATION
EXISTING BRIDGE PLAN
LOCATION 2: SN 016-2504

ROUTE VARIOUS	SECTION 2010-088-BP	COUNTY COOK AND LAKE	TOTAL SHEETS 25	SHEET NUMBER 16
------------------	------------------------	-------------------------	--------------------	--------------------

CONTRACT NO. 60L84

Match Line No. 2
See Sht. No. 5



- R 18" x 1" (Beams 1-3)
- R 18" x 7/8" (Beams 4-6)
- R 16" x 7/8" (Beams 7-8)

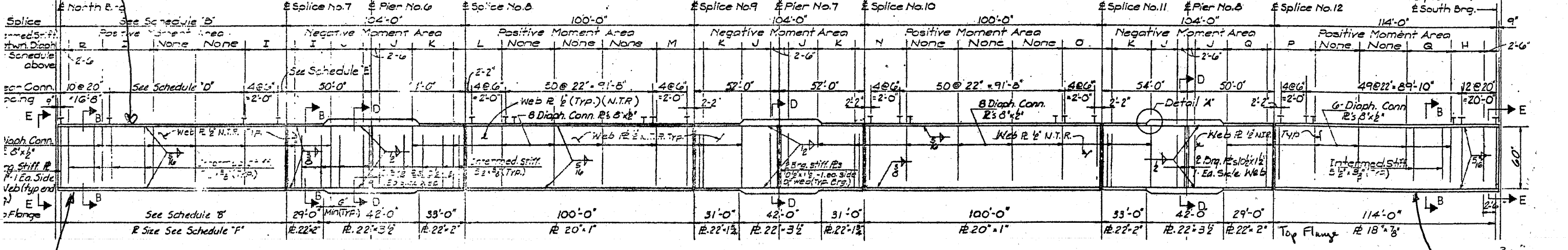
Note: Spacing of Plates given from South to North

L	2 spaces @ 4'-2 3/4" = 23'-0" for all Girders
M	2 spaces @ 5'-0" = 25'-0" for all Girders
N	2 spaces @ 5'-0" = 25'-0" for all Girders
O	2 spaces @ 5'-0" = 25'-0" for all Girders
P	2 spaces @ 5'-0" = 25'-0" for all Girders
Q	2 spaces @ 5'-0" = 25'-0" for all Girders

Schedule (Note: Spacing of Plates is given from South to North)

M*	1 sp. @ 4'-0", 3 sp. @ 6'-4" = 23'-0" for all Girders
N**	1 sp. @ 4'-0", 3 sp. @ 6'-4" = 23'-0" for all Girders
O	4 sp. @ 5'-9" = 23'-0" for all Girders
P**	1 sp. @ 6'-5", 3 sp. @ 5'-8 1/2" = 23'-7" for all Girders
Q	3 sp. @ 4'-8 1/2" = 23'-7" for all Girders

(* Sequence of spacing North to South)
(** Sequence of spacing South to North)



- R 22" x 1 1/2" (Beams 1-3)
- R 22" x 1 1/4" (Beams 4-8)

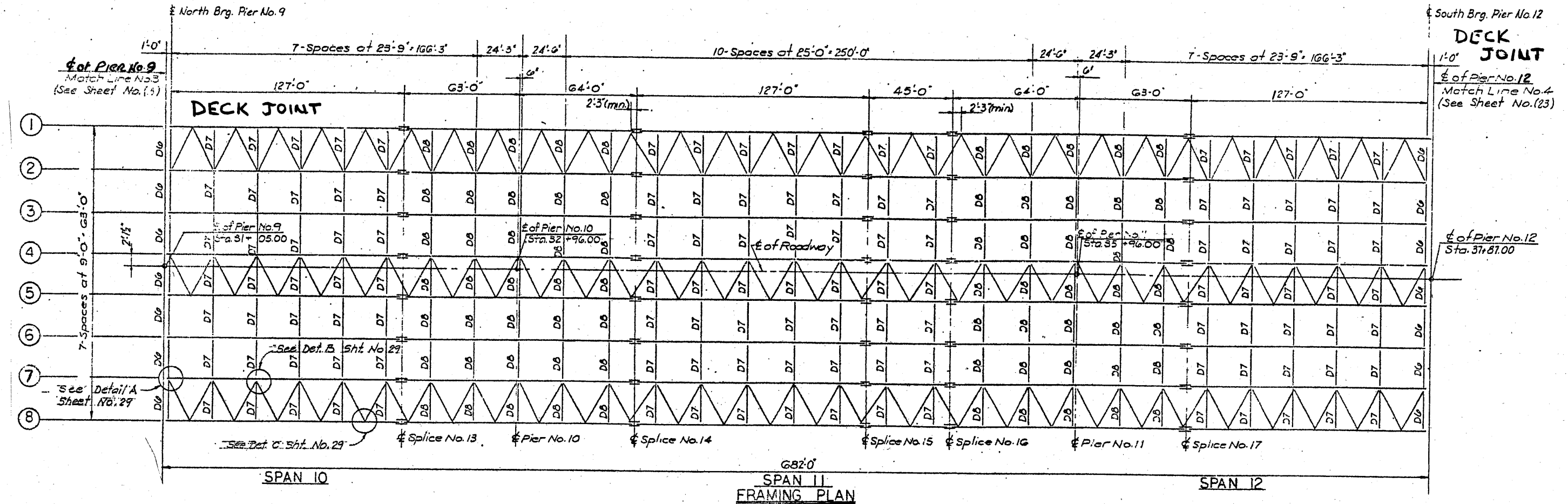
FOR INFORMATION ONLY

ILLINOIS DEPARTMENT OF
TRANSPORTATION
EXISTING BRIDGE PLAN
LOCATION 2: SN 016-2504

ROUTE	SECTION	COUNTY	TOTAL SHEETS	SHEET NUMBER
VARIOUS	2010-088-BP	COOK AND LAKE	25	17



CONTRACT NO. 60L84



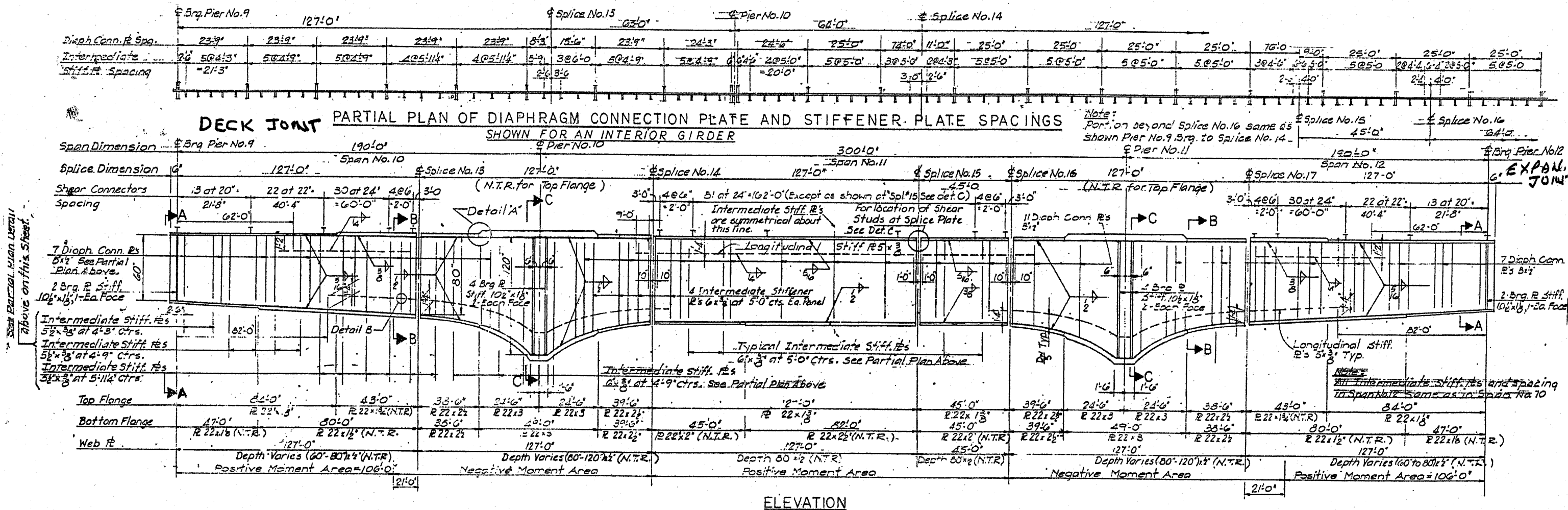
FOR INFORMATION ONLY

ILLINOIS DEPARTMENT OF
TRANSPORTATION

EXISTING BRIDGE PLAN
LOCATION 2: SN 016-2504

ROUTE VARIOUS	SECTION 2010-088-BP	COUNTY COOK AND LAKE	TOTAL SHEETS 25	SHEET NUMBER 18
------------------	------------------------	-------------------------	-----------------------	-----------------------

CONTRACT NO. 60L84

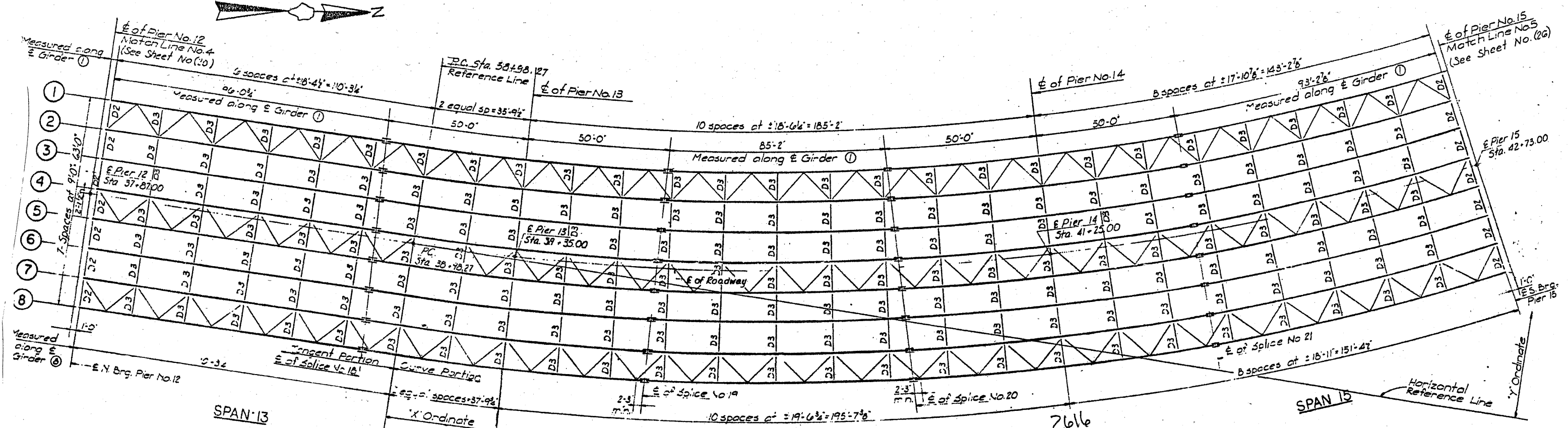


FOR INFORMATION ONLY

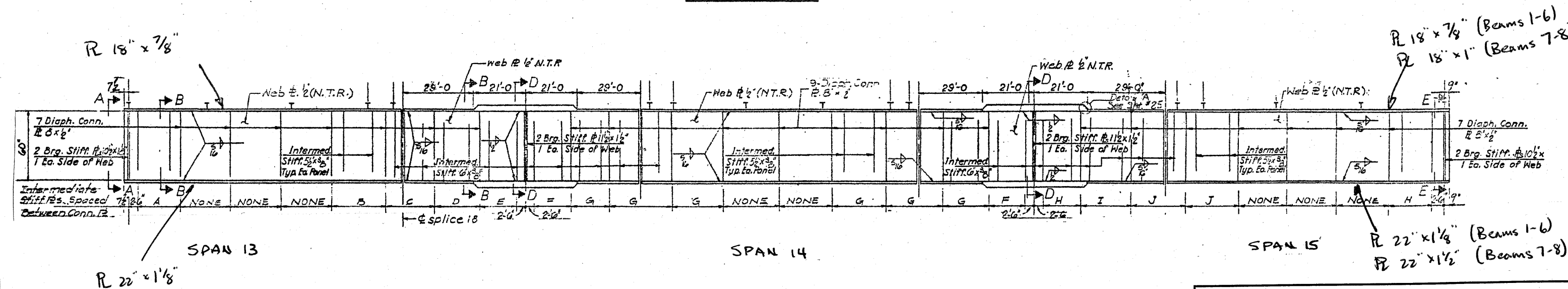
ILLINOIS DEPARTMENT OF
 TRANSPORTATION
 EXISTING BRIDGE PLAN
 LOCATION 2: SN 016-2504

ROUTE	SECTION	COUNTY	TOTAL SHEETS	SHEET NUMBER
VARIOUS	2010-088-BP	COOK AND LAKE	25	19

CONTRACT NO. 60L84



FRAMING PLAN

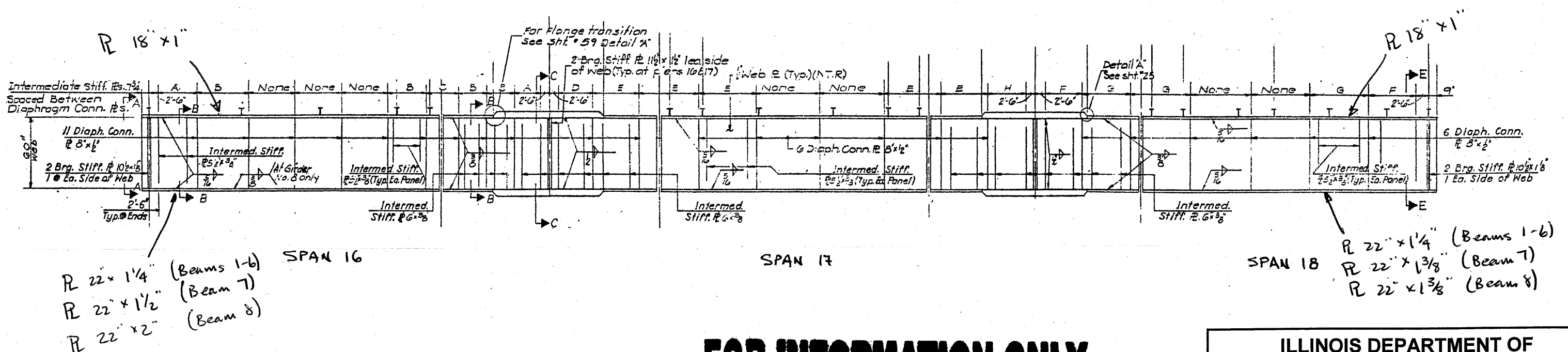
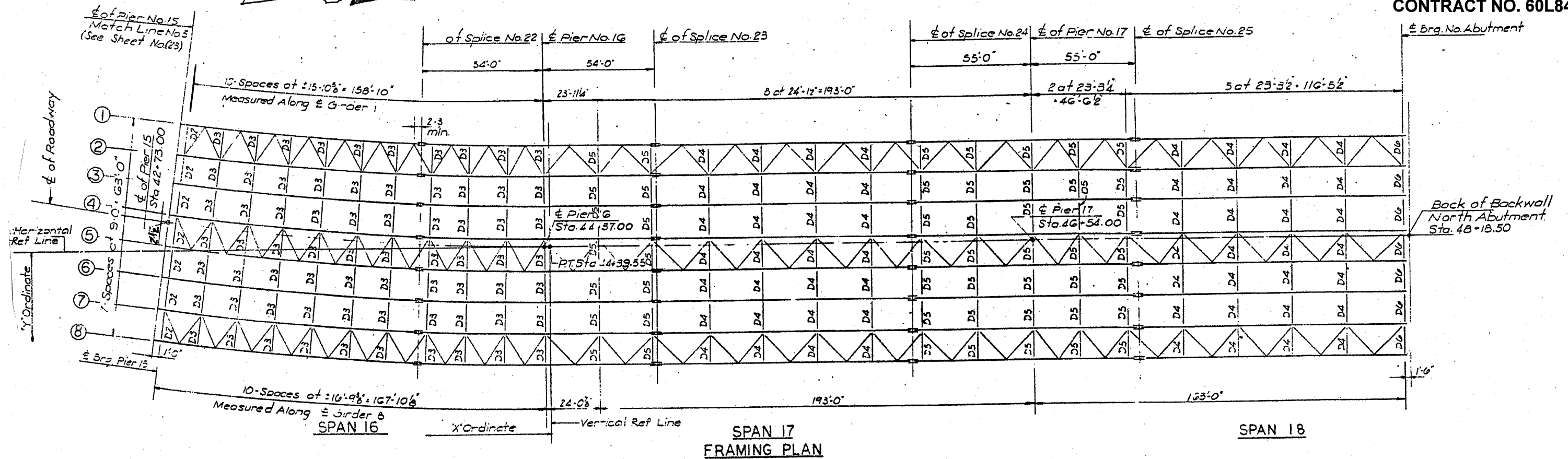


FOR INFORMATION ONLY

ILLINOIS DEPARTMENT OF
TRANSPORTATION
EXISTING BRIDGE PLAN
LOCATION 2: SN 016-2504

ROUTE VARIOUS	SECTION 2010-088-BP	COUNTY COOK AND LAKE	TOTAL SHEETS 25	SHEET NUMBER 20
------------------	------------------------	-------------------------	--------------------	--------------------

CONTRACT NO. 60L84



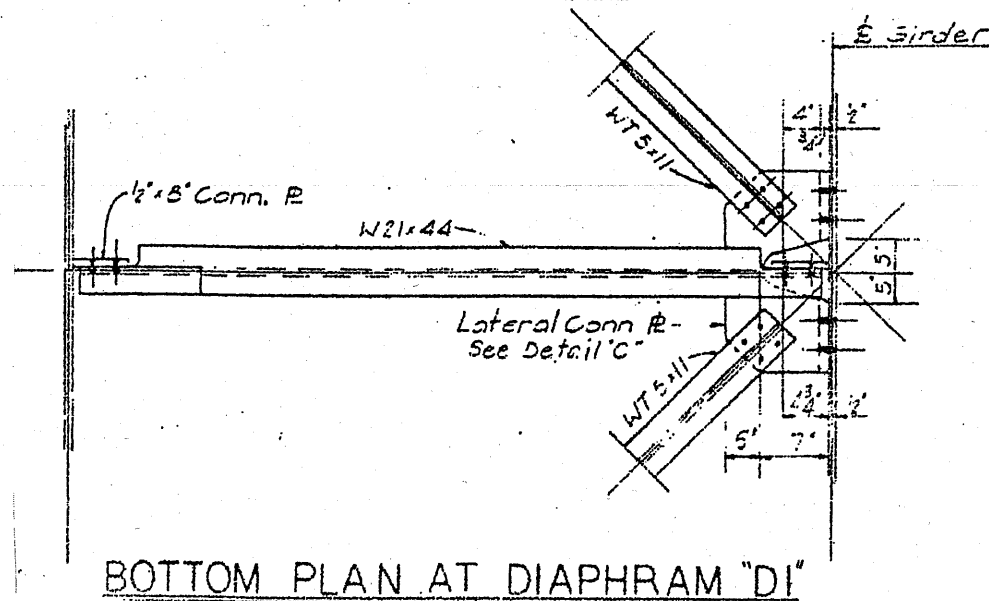
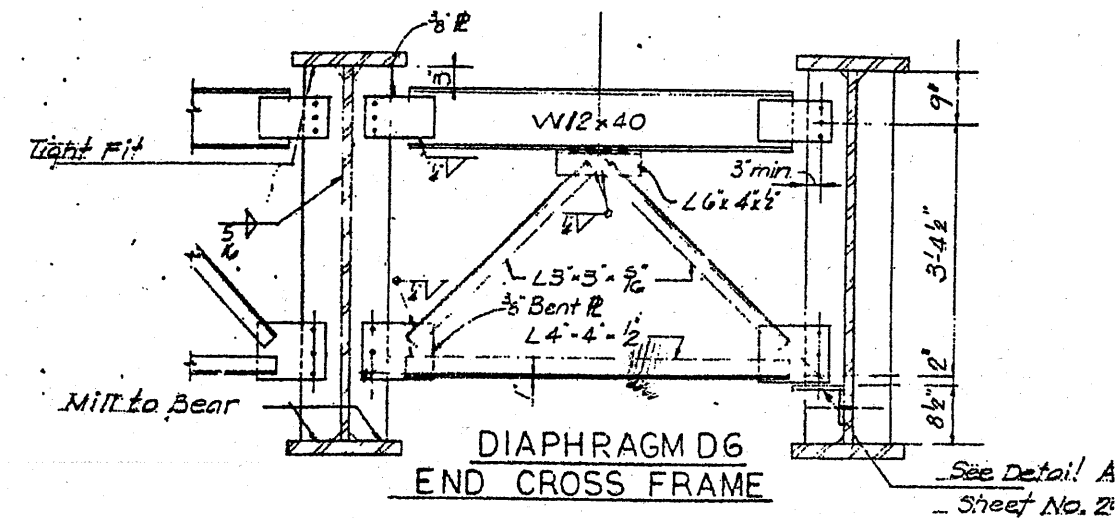
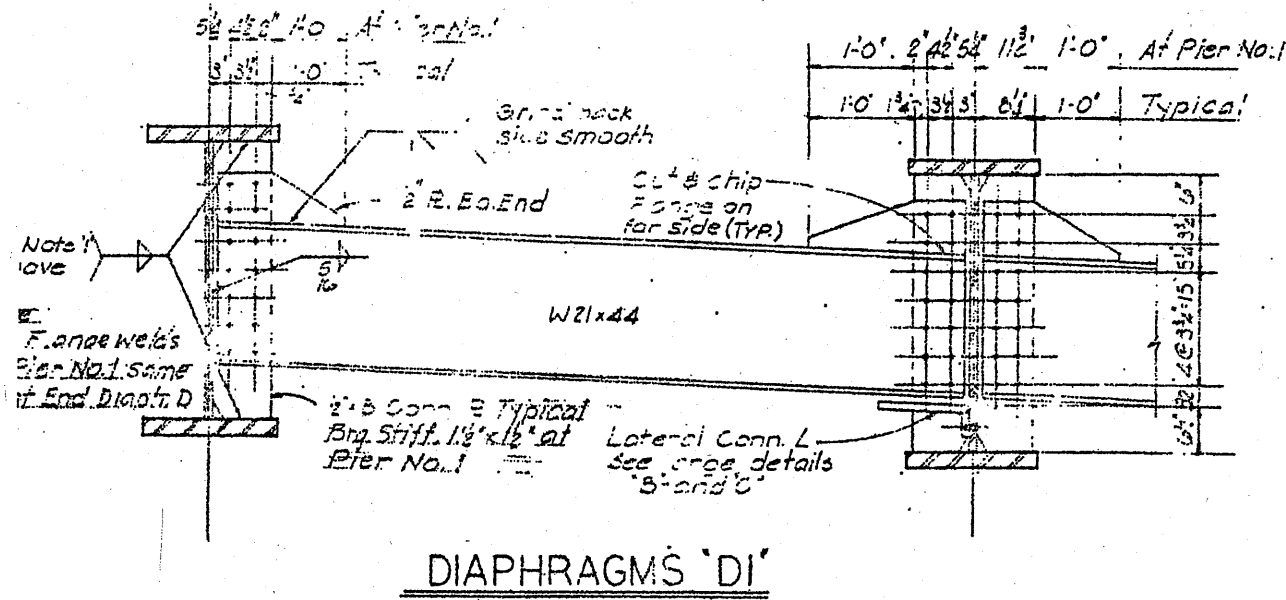
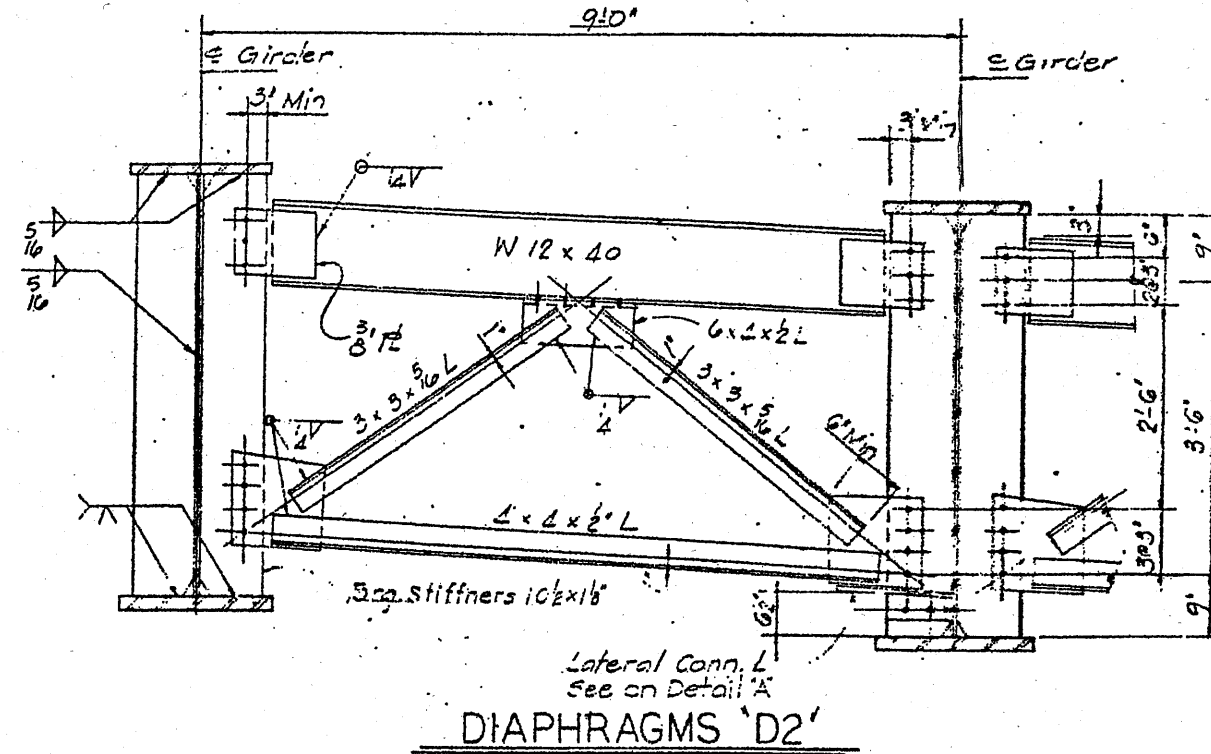
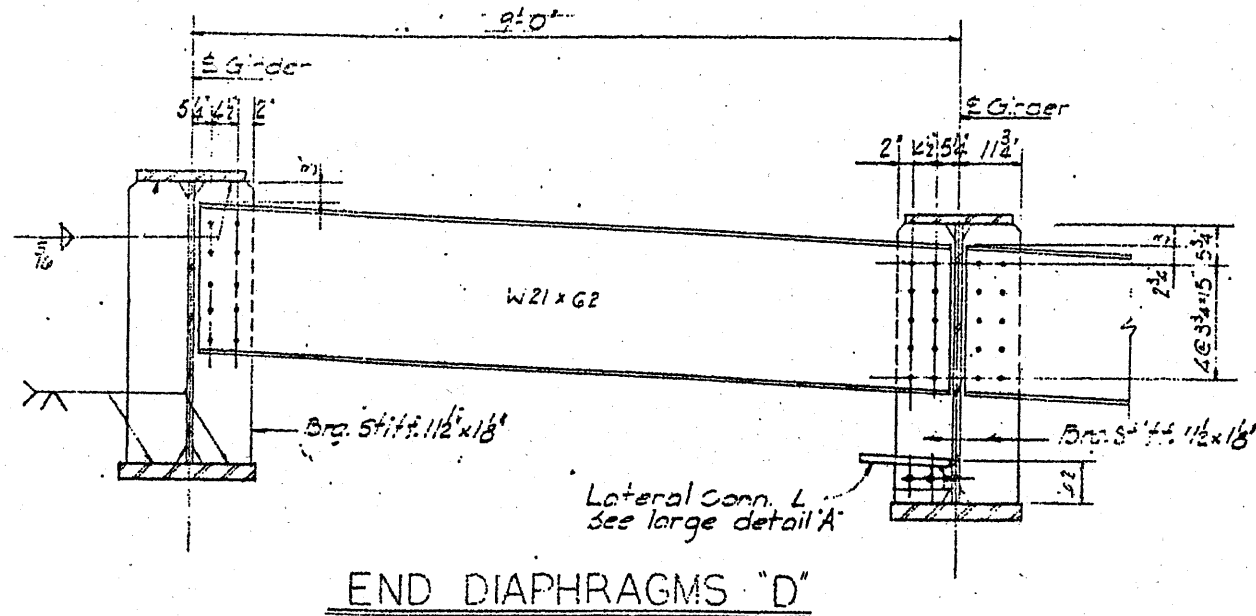
FOR INFORMATION ONLY

ILLINOIS DEPARTMENT OF
TRANSPORTATION

EXISTING BRIDGE PLAN
LOCATION 2: SN 016-2504

ROUTE	SECTION	COUNTY	TOTAL SHEETS	SHEET NUMBER
VARIOUS	2010-088-BP	COOK AND LAKE	25	21

CONTRACT NO. 60L84



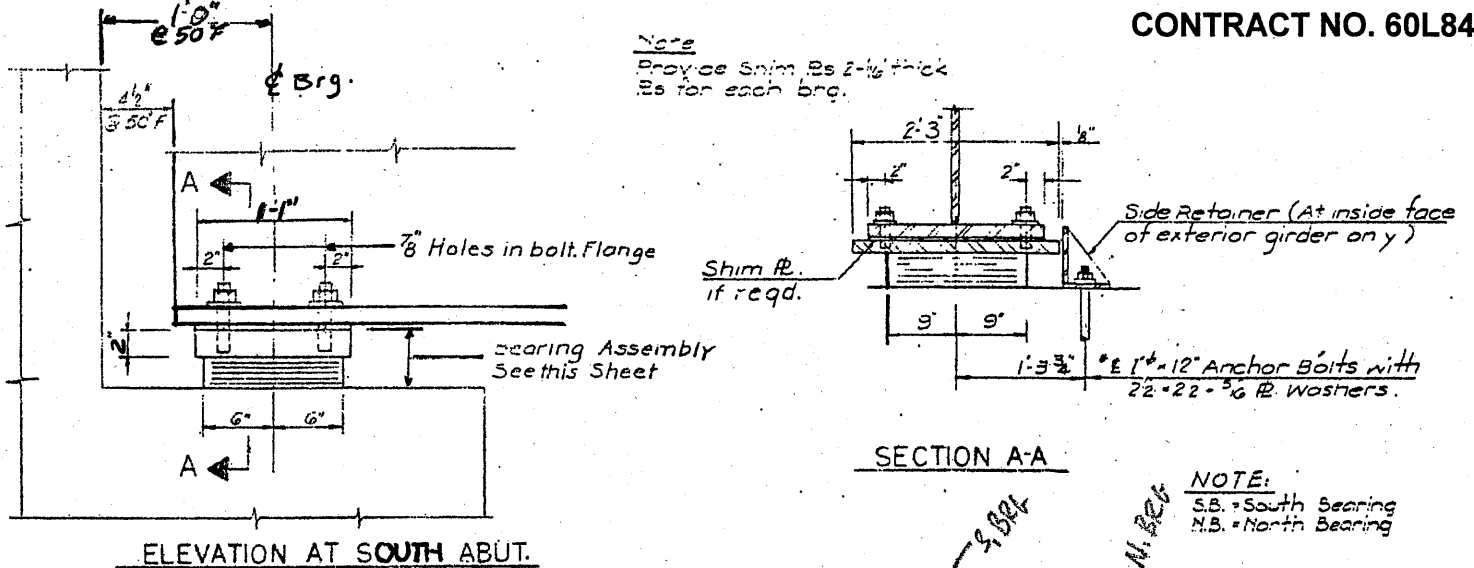
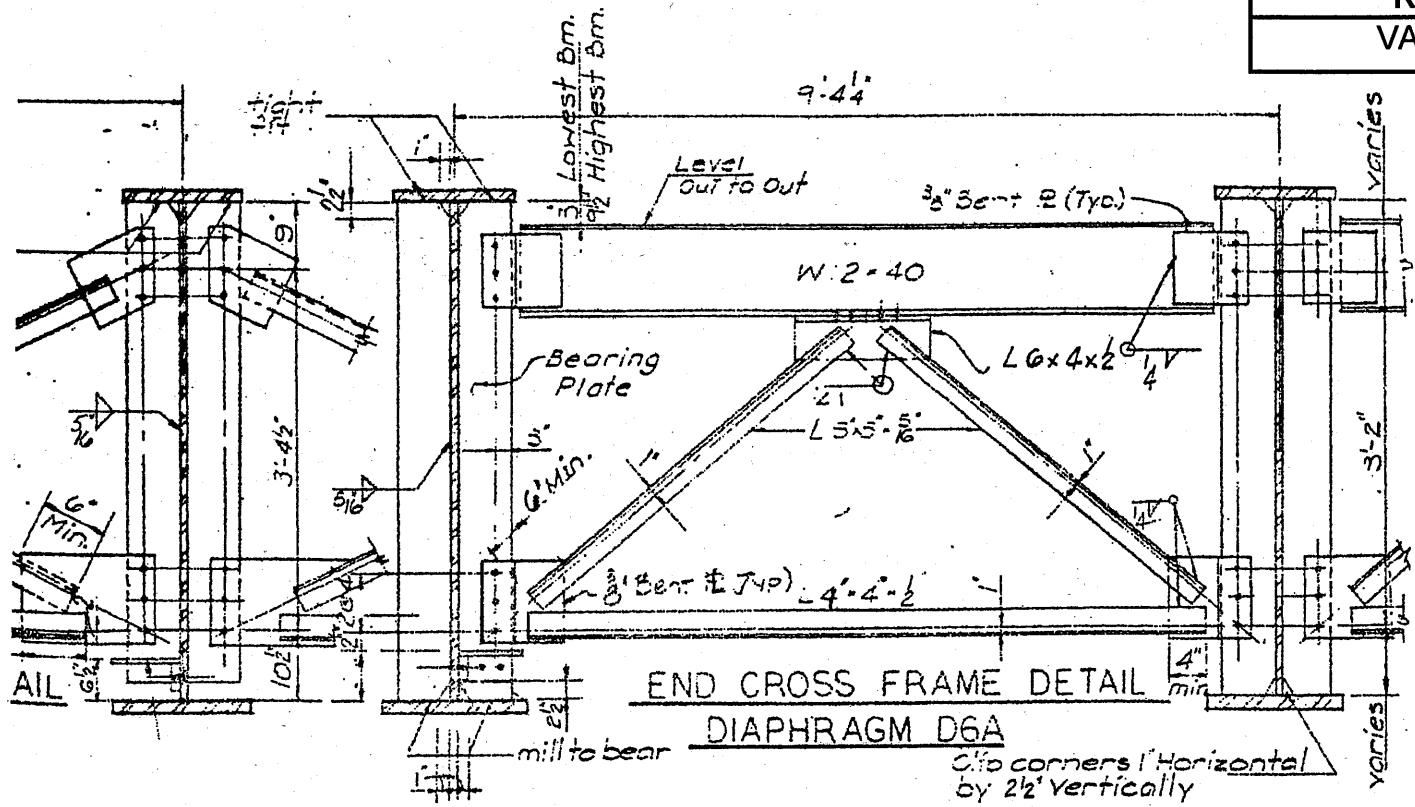
FOR INFORMATION ONLY

ILLINOIS DEPARTMENT OF
TRANSPORTATION

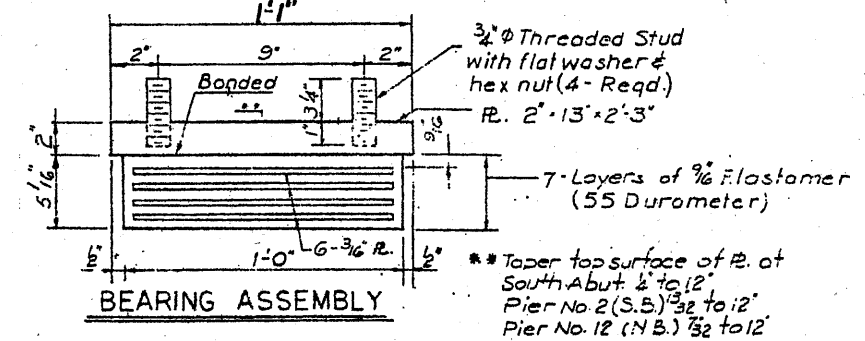
EXISTING BRIDGE PLAN
LOCATION 2: SN 016-2504

ROUTE	SECTION	COUNTY	TOTAL SHEETS	SHEET NUMBER
VARIOUS	2010-088-BP	COOK AND LAKE	25	22

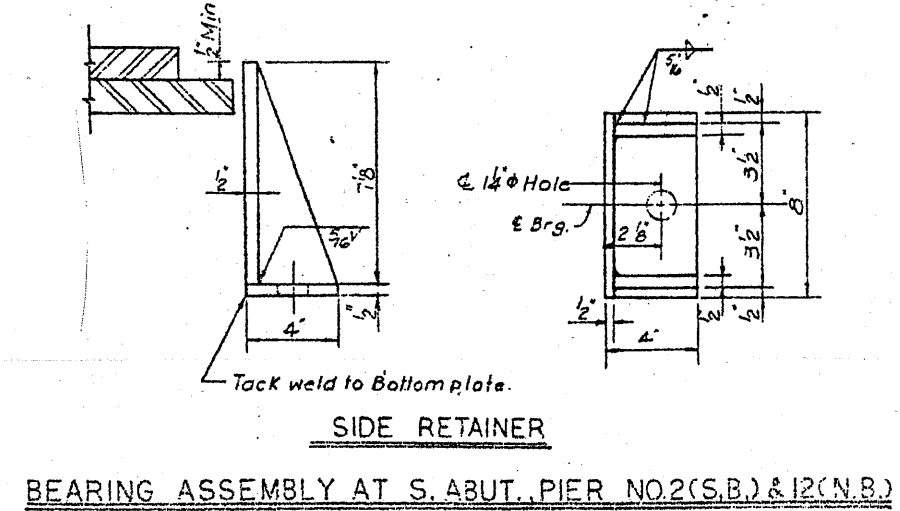
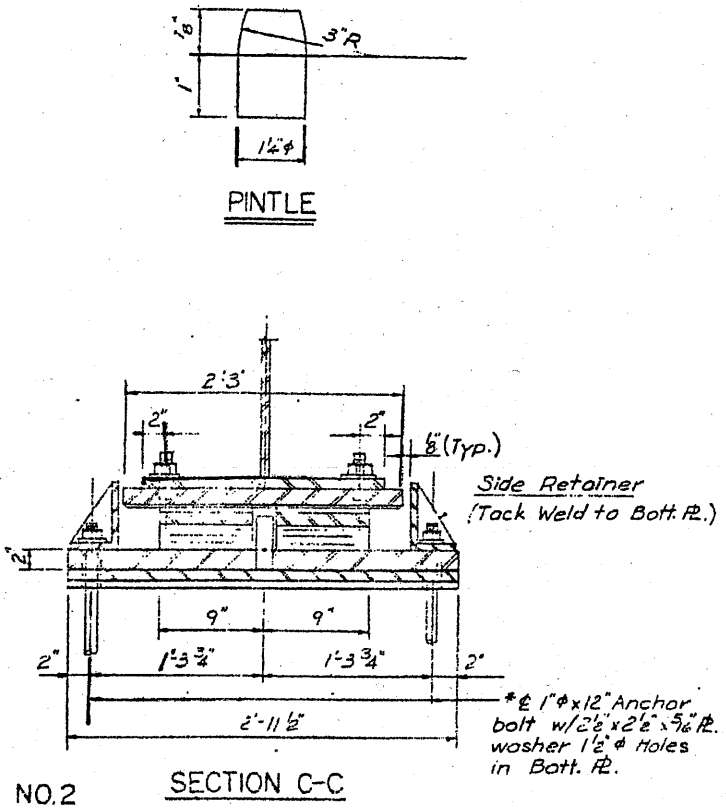
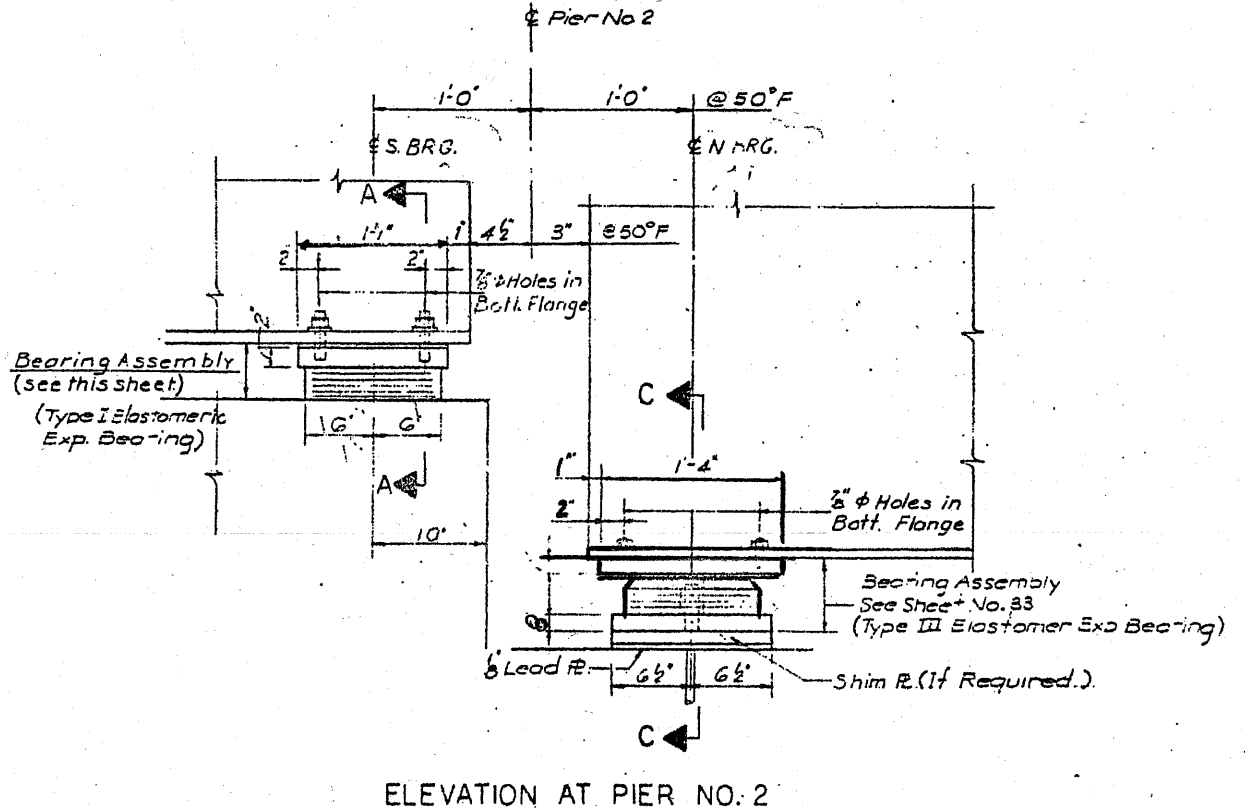
CONTRACT NO. 60L84



TYPE I ELASTOMERIC EXP. BEARING AT SOUTH ABUT. PIER NO. 2 (S.B.) & PIER NO. 12 (N.B.)



FOR INFORMATION ONLY

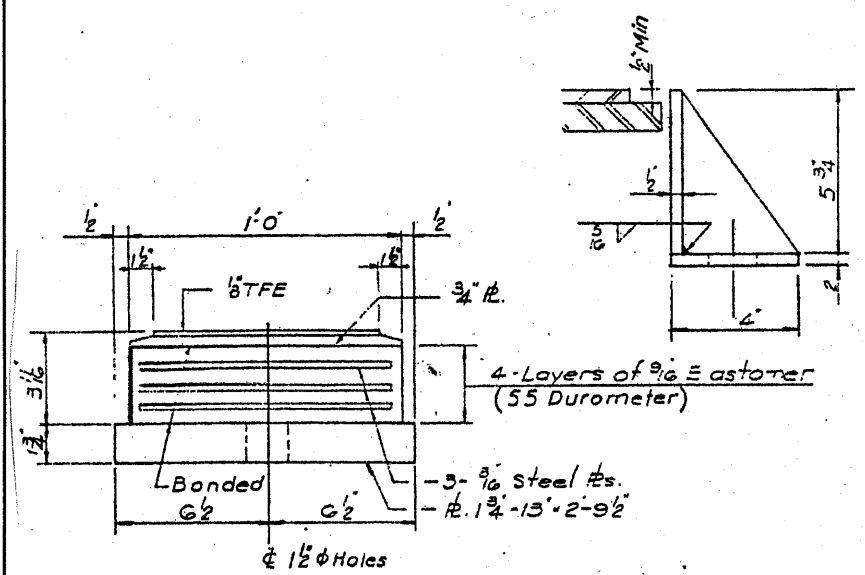


BEARING ASSEMBLY AT S. ABUT. PIER NO. 2 (S.B.) & 12 (N.B.)

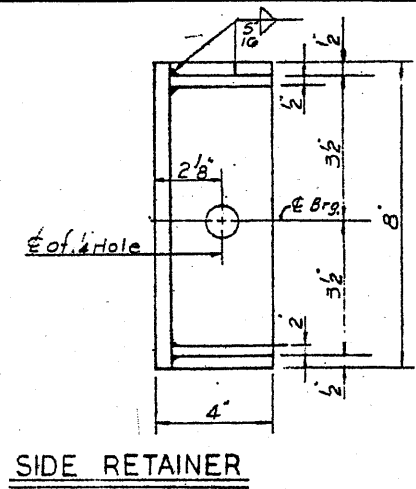
ILLINOIS DEPARTMENT OF TRANSPORTATION
EXISTING BRIDGE PLAN
LOCATION 2: SN 016-2504

ROUTE VARIOUS	SECTION 2010-088-BP	COUNTY COOK AND LAKE	TOTAL SHEETS 25	SHEET NUMBER 23
------------------	------------------------	-------------------------	--------------------	--------------------

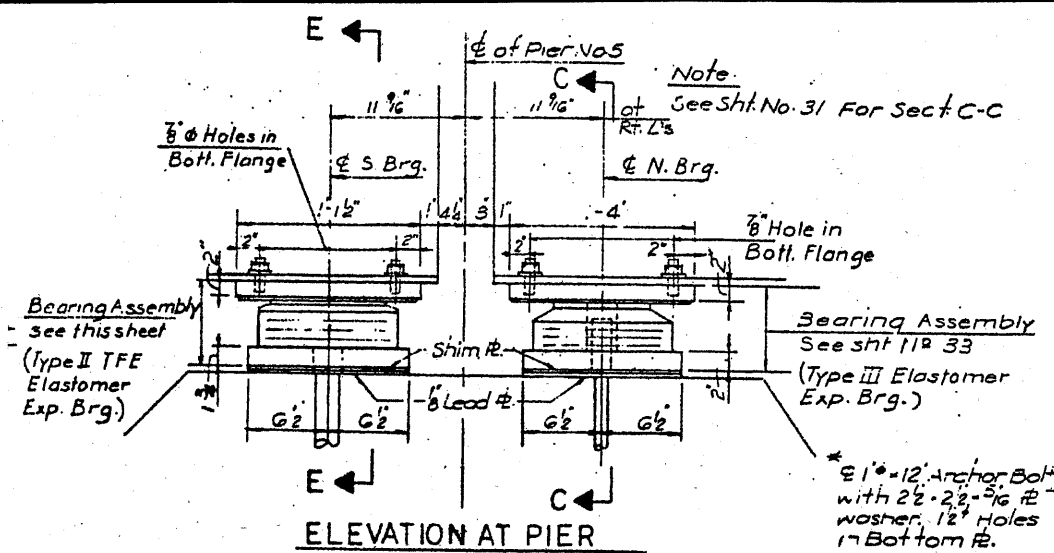
CONTRACT NO. 60L84



BOTTOM BEARING ASSEMBLY
BEARING ASSEMBLY AT PIER NO. 5 (S.B.) & 15 (N.B.)

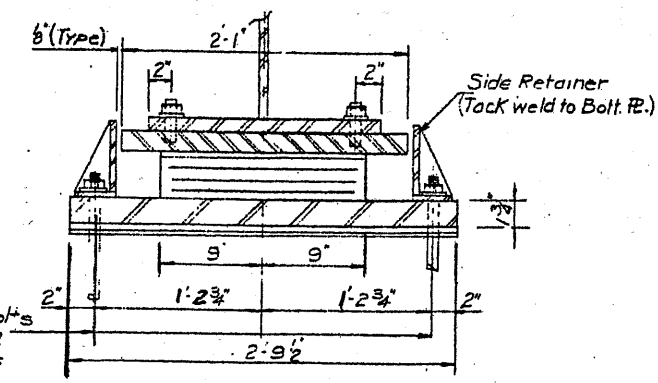


SIDE RETAINER

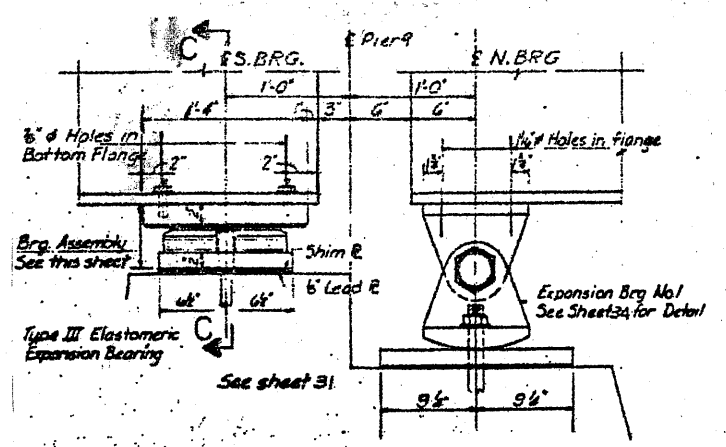


ELEVATION AT PIER

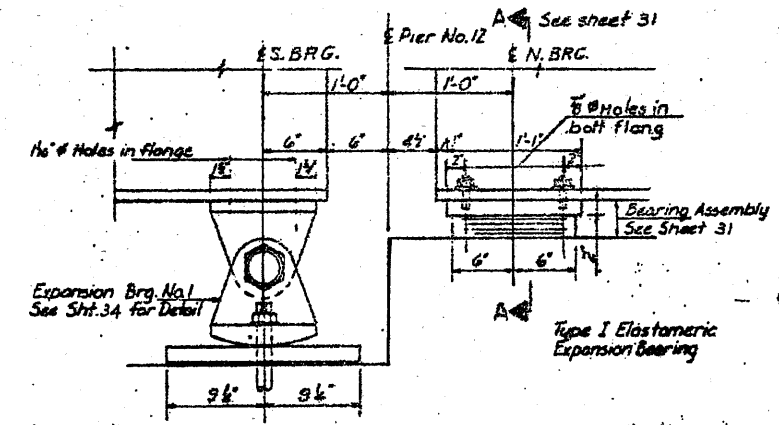
EXPANSION BEARING PIER NO. 5



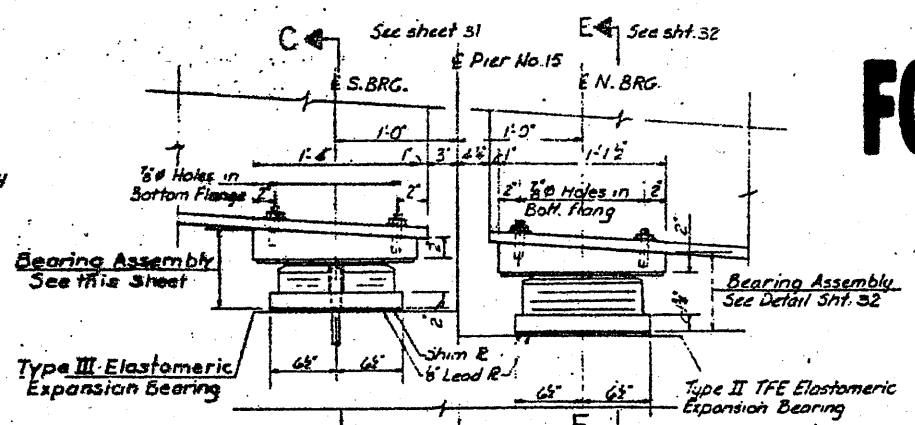
SECTION E-E



ELEVATION AT PIER
EXPANSION BEARINGS
AT PIER NO. 9

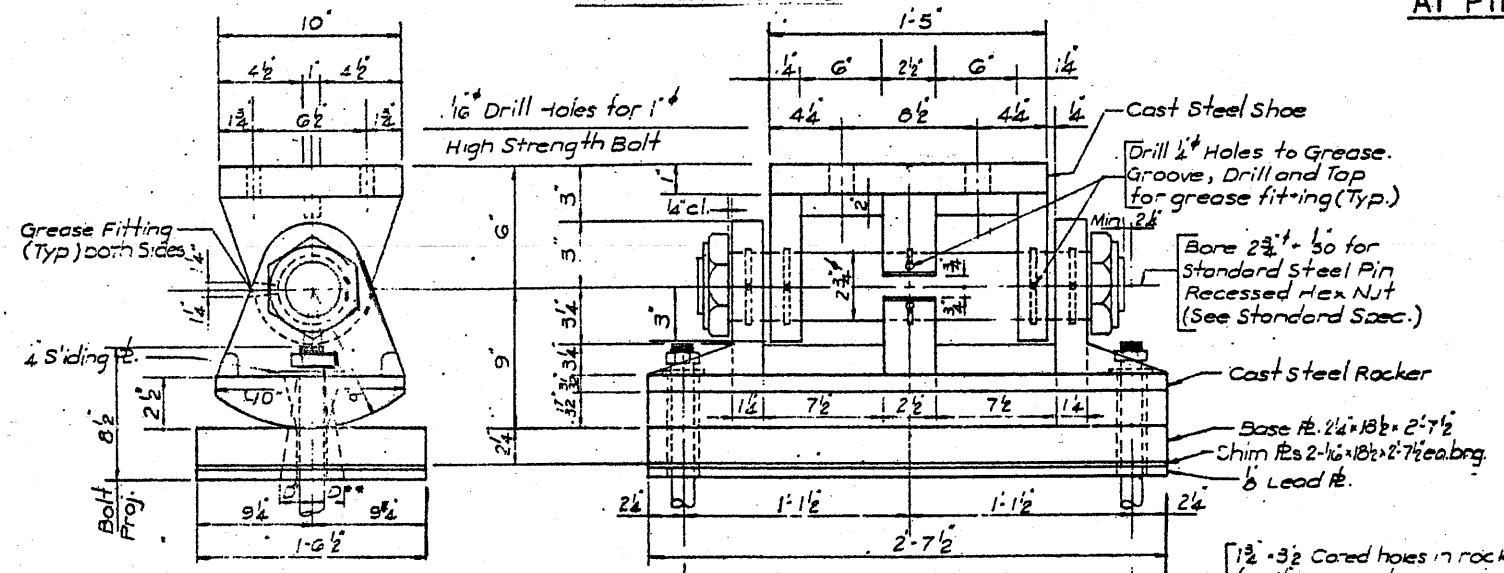


ELEVATION AT PIER
EXPANSION BEARINGS
AT PIER NO. 12

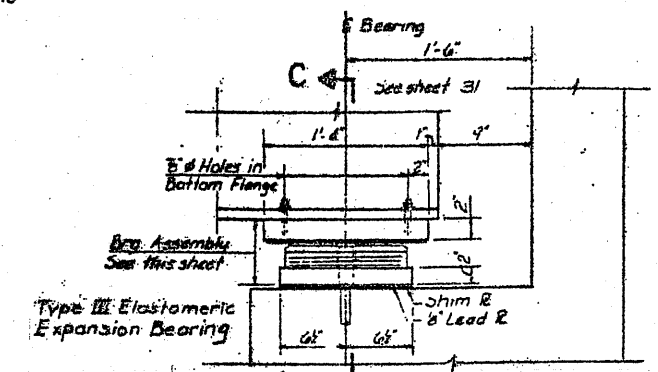


ELEVATION AT PIER
EXPANSION BEARINGS
AT PIER NO. 15

FOR INFORMATION ONLY



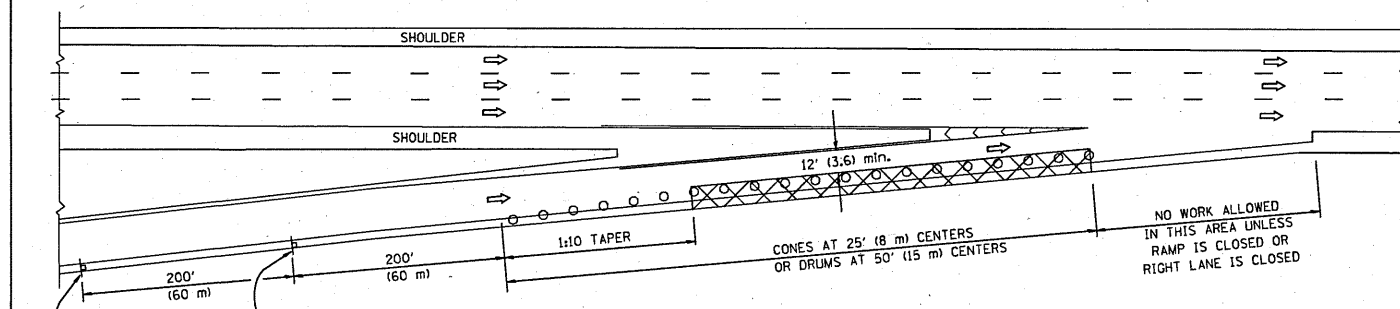
EXPANSION BEARING NO. 1
AT PIER NO. 9 (N.B.) AND NO. 12 (S.B.)



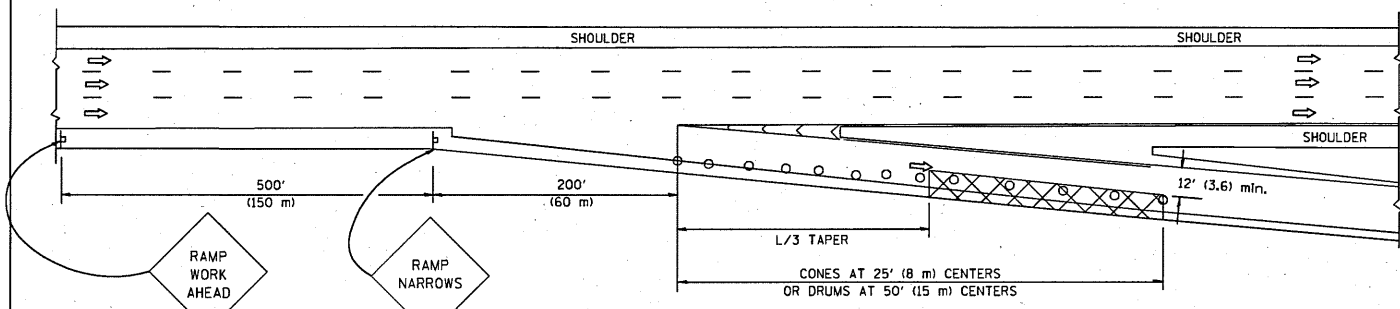
ELEVATION
EXPANSION BEARING
AT NORTH ABUTMENT

ILLINOIS DEPARTMENT OF TRANSPORTATION
EXISTING BRIDGE PLAN
LOCATION 2: SN 016-2504

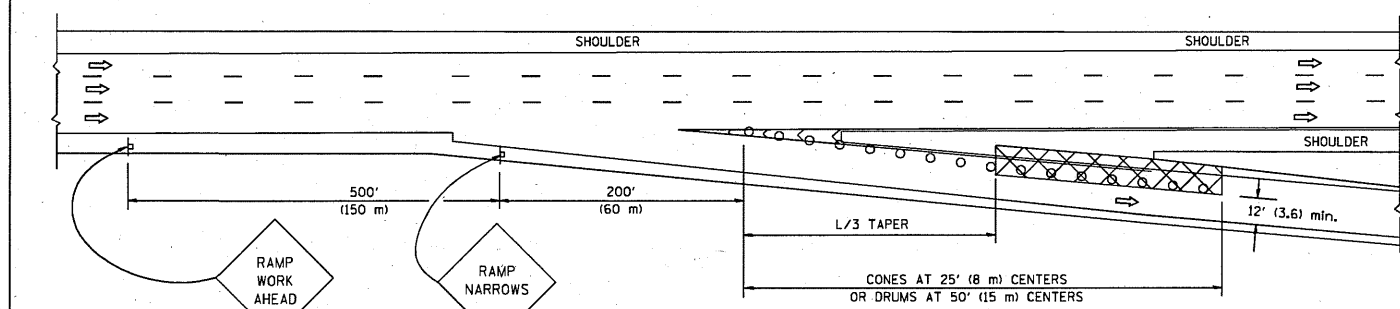
PARTIAL RAMP CLOSURE DETAILS



TYPICAL ENTRANCE RAMP



TYPICAL EXIT RAMP



TYPICAL EXIT RAMP

SYMBOLS

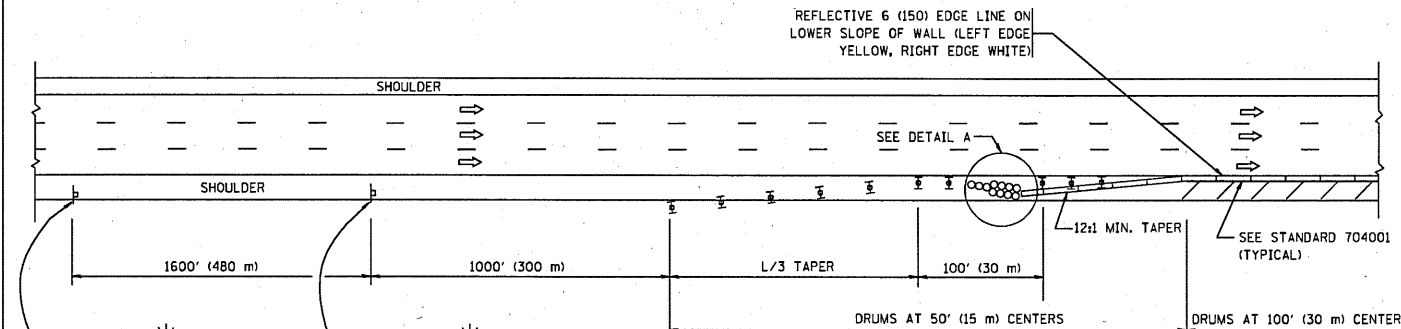
- ACTIVE WORK AREA
- SIGN ON PORTABLE OR PERMANENT SUPPORT
- FLAGGER WITH CONTROL SIGN
- TYPE II BARRICADE, DRUM OR VERTICAL BARRICADE WITH STEADY BURN MONO-DIRECTIONAL LIGHT
- CONE, DRUM OR BARRICADE

GENERAL NOTES

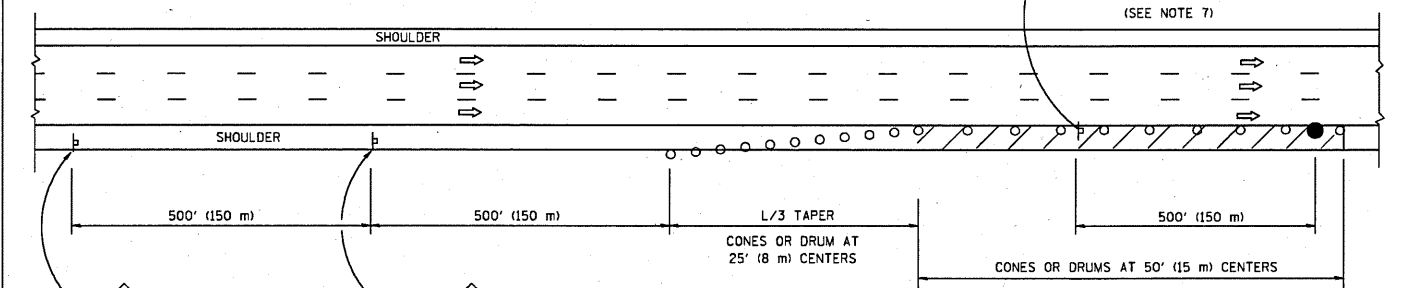
1. THE "L" DISTANCE EQUALS:

SPEED LIMIT	FORMULAS
45 mph (80 km/h) OR GREATER:	METRIC ENGLISH $L=0.65(W/S)$ $L=(W/S)$
W = WIDTH OF OFFSET IN FEET (METERS)	
S = NORMAL POSTED SPEED MPH (KM/H)	
2. PLASTIC DRUMS WITH HIGH PERFORMANCE REFLECTIVE SHEETING AND STEADY BURNING LIGHTS ARE REQUIRED FOR ALL NIGHTTIME CLOSURES.
3. ALL SIGNS SHALL BE POST MOUNTED IF THE CLOSURE TIME EXCEEDS FOUR DAYS.
4. FLASHING LIGHTS SHALL BE USED DURING THE HOURS OF DARKNESS AND SHALL BE INSTALLED ABOVE THE FIRST TWO SETS OF SIGNS.

SHOULDER CLOSURE DETAILS

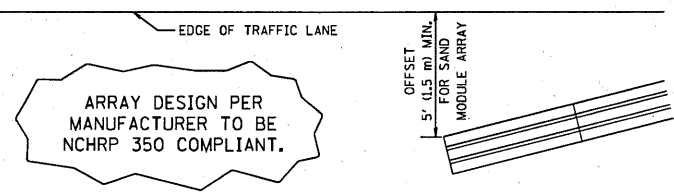


PERMANENT SHOULDER CLOSURE



DAYTIME SHOULDER CLOSURE

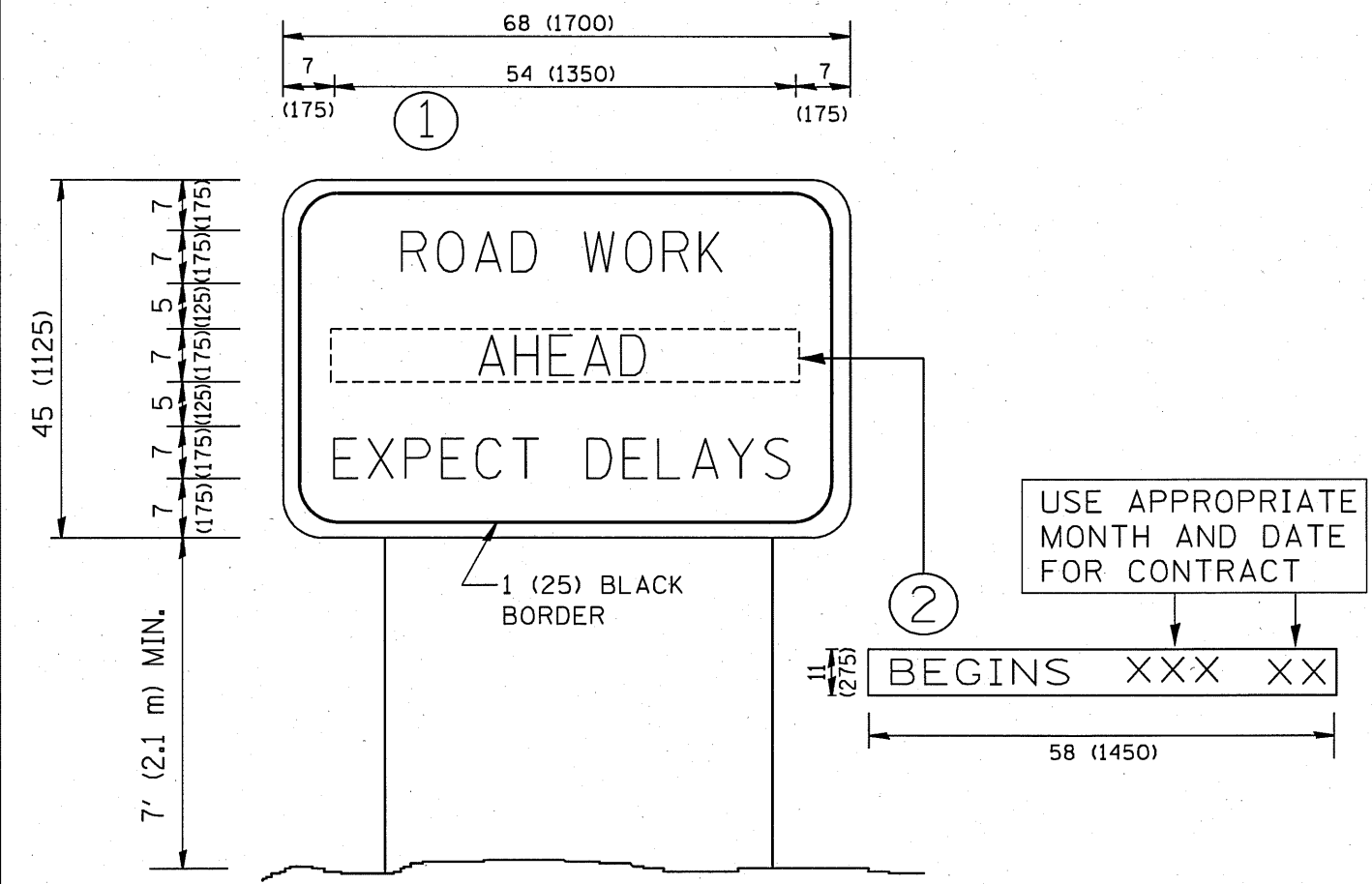
THIS DETAIL IS USED WHERE:
1. VEHICLES, EQUIPMENT, WORKERS OR THEIR ACTIVITIES ENCROACH IN AN AREA CLOSER THAN 15' (4.5 m) TO THE EDGE OF PAVEMENT FOR A PERIOD IN EXCESS OF 15 MINUTES.



DETAIL "A"
IMPACT ATTENUATOR, TEMPORARY
(SEE NOTE 5)

ALL DIMENSIONS ARE IN INCHES (MILLIMETERS) UNLESS OTHERWISE SHOWN.

FILE NAME = W:\d:\state\22x34\vc17.dgn	USER NAME = luyao	DESIGNED -	REVISED - 04-03	STATE OF ILLINOIS DEPARTMENT OF TRANSPORTATION	TRAFFIC CONTROL DETAILS FOR FREEWAY SHOULDER CLOSURES AND PARTIAL RAMP CLOSURES	F.A. RTE. = 352	SECTION 2010-038-0P	COUNTY Cook	TOTAL SHEETS 25	SHEET NO. 24	
PLOT SCALE = 50.0000' / IN.	CHECKED -	REVISED - J.A.F. 12-06	REVISED - S.P.B. 01-07		SCALE: NONE	SHEET NO. 1 OF 1 SHEETS	STA.	TO STA.	CONTRACT NO.		
PLOT DATE = 1/26/2010	DATE = 11-96	REVISED - S.P.B. 12-09						FED. ROAD DIST. NO. 1 [ILLINOIS] FED. AID PROJECT			



NOTES:

1. USE BLACK LETTERING ON ORANGE BACKGROUND.
2. ERECT SIGNS IN ADVANCE OF THE LOCATION FOR THE "ROAD CONSTRUCTION AHEAD" SIGN AT LOCATIONS AS DIRECTED BY THE ENGINEER.
3. ERECT SIGN ① WITH INSTALLED PANEL ② ONE WEEK PRIOR TO THE START OF CONSTRUCTION.
4. REMOVE PANEL ② SOON AFTER THE START OF CONSTRUCTION.
5. SEE SPECIAL PROVISION FOR "TEMPORARY INFORMATION SIGNING" FOR ADDITIONAL INFORMATION.
6. ONE SIGN ASSEMBLY EQUALS 25.70 SQ. FT. (2.3 SQ. M.)
7. SHALL BE PAID FOR AS TEMPORARY INFORMATION SIGNING.

ALL DIMENSIONS ARE IN INCHES (MILLIMETERS) UNLESS OTHERWISE SHOWN.

FILE NAME = W:\diststd\22x34\ts22.dgn	USER NAME = geglianobt	DESIGNED -	REVISED - R. MIRS 09-15-97
		DRAWN -	REVISED - R. MIRS 12-11-97
	PLOT SCALE = 50,000 1 / IN.	CHECKED -	REVISED - T. RAMMACHER 02-02-99
	PLOT DATE = 1/4/2008	DATE -	REVISED - C. JUCIUS 01-31-07

**STATE OF ILLINOIS
DEPARTMENT OF TRANSPORTATION**

ARTERIAL ROAD INFORMATION SIGN	
SCALE: NONE	SHEET NO. 1 OF 1 SHEETS STA. TO STA.

F.A. RTE.	SECTION	COUNTY	TOTAL SHEETS	SHEET NO.
2612	2010-088 GP	COOK	25	25
TC-22			CONTRACT NO.	
FED. ROAD DIST. NO. 1 ILLINOIS FED. AID PROJECT				