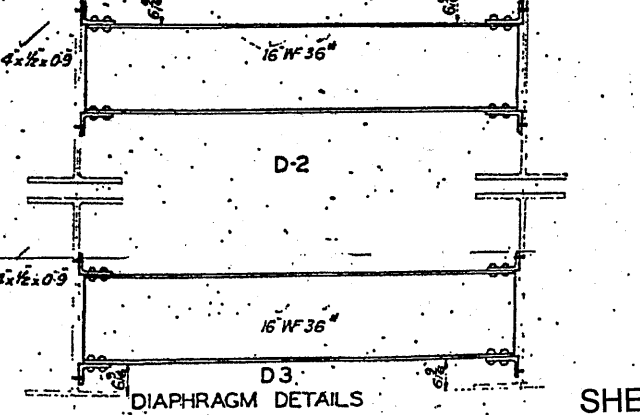
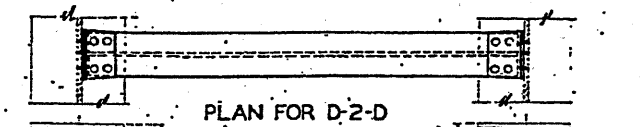
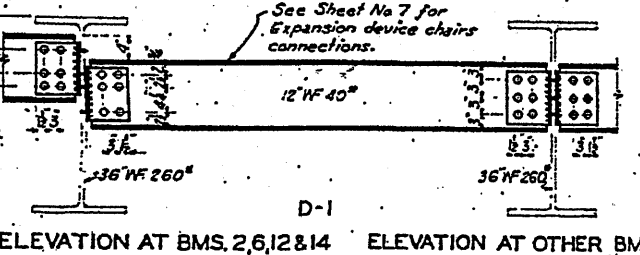
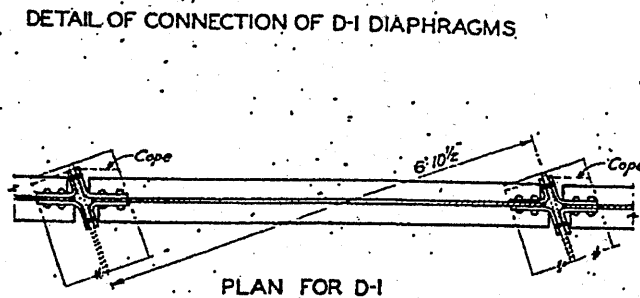
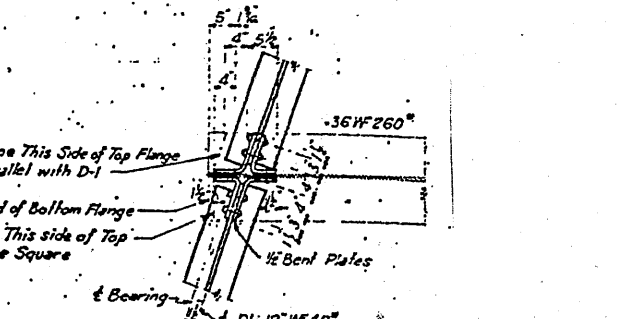
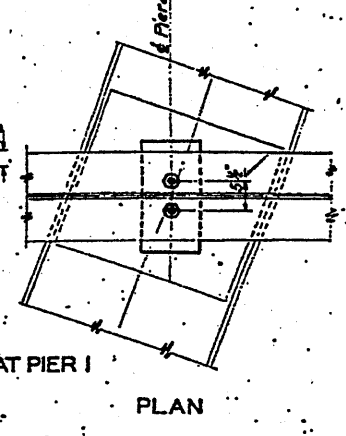
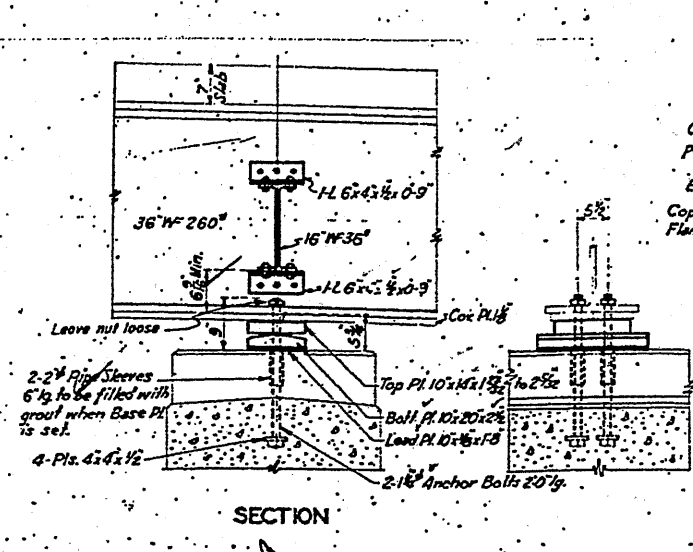
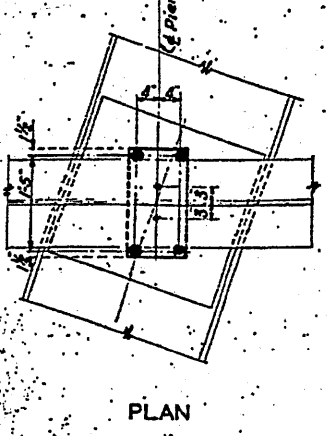
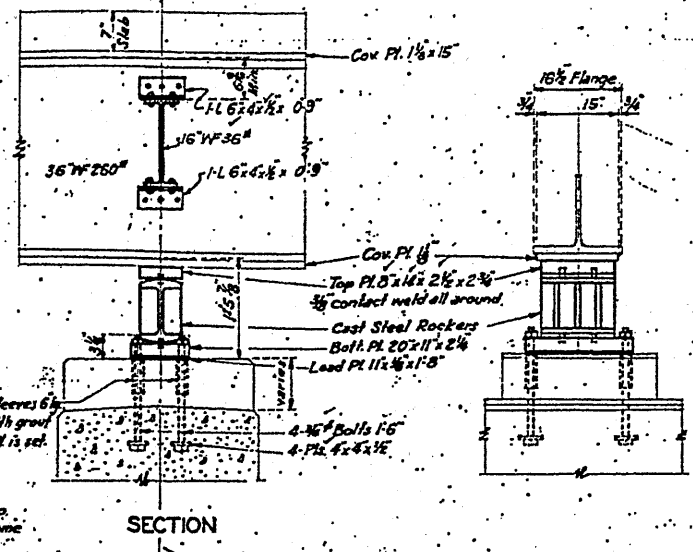
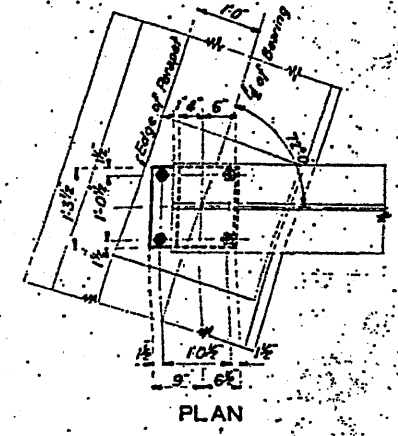
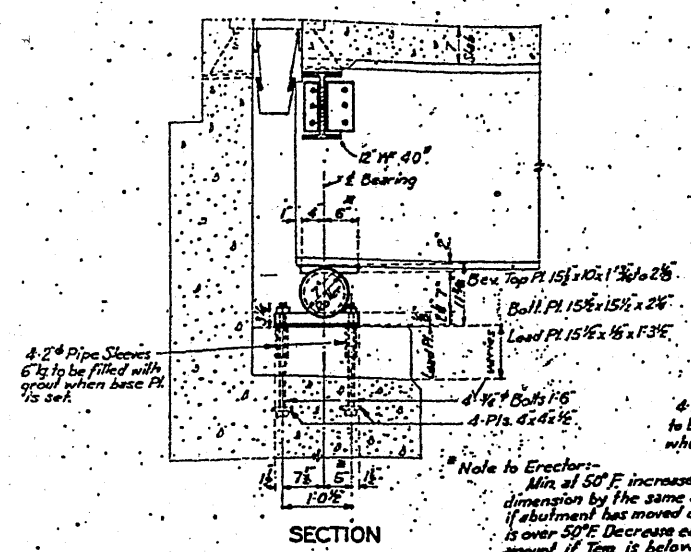


| | | | | |
|-----------------|------------------------|----------------|--------------------|--------------------|
| ROUTE FAI 94 | SECTION 2010-089-BP | COUNTY COOK | TOTAL SHEETS 35 | SHEET NUMBER 14 |
|-----------------|------------------------|----------------|--------------------|--------------------|

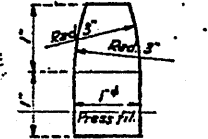
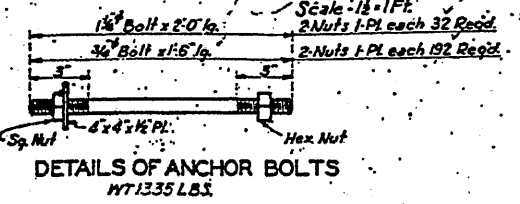
CONTRACT NO. 60L85



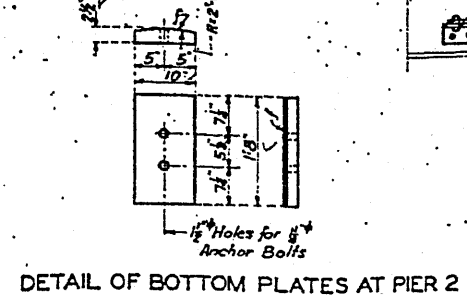
SHEET 3 OF 4

Note to Erector:
Min. at 50°F increase each dimension by the same amount if abutment has moved or if Temp. is over 50°F Decrease each by same amount if Temp. is below 50°F

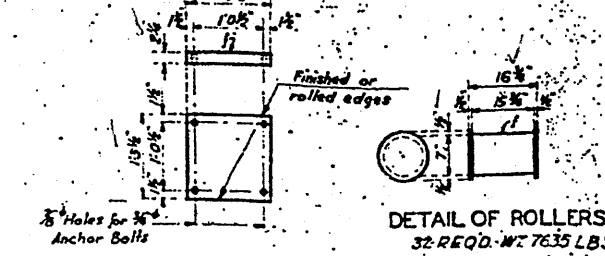
DETAILS OF CAST STEEL ROCKERS AT PIER I
16 REQD. - WT. 3200 LBS.



DETAIL OF TOP PLATES AT PIER 2
15 REQD. - WT. 1200 LBS.

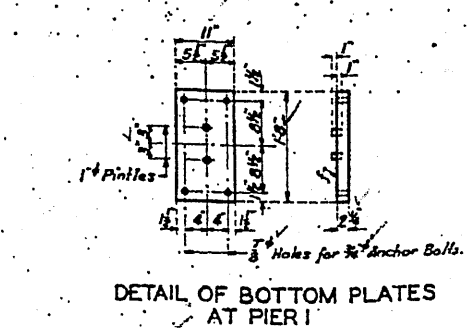


DETAIL OF TOP PLATES AT ABUTMENTS
32 REQD. - WT. 2900 LBS.



DETAIL OF BOTTOM PLATES AT ABUTMENTS

DETAIL OF TOP PLATES AT PIER I
16 REQD. - WT. 3200 LBS.



ILLINOIS DEPARTMENT OF TRANSPORTATION

EXISTING BRIDGE PLAN
SN 016-0163 (BRIDGE 2)