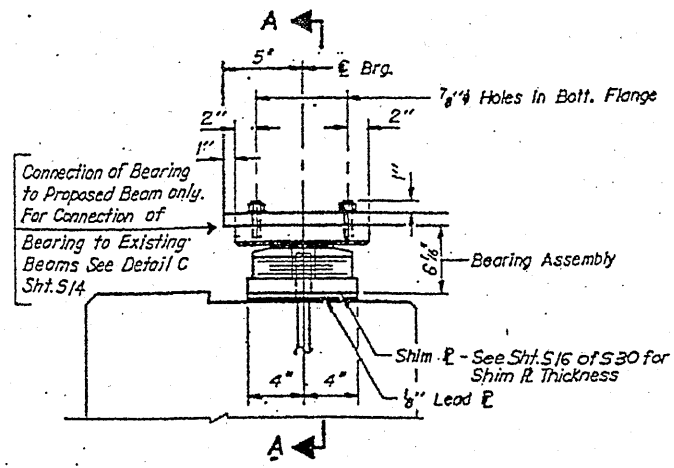
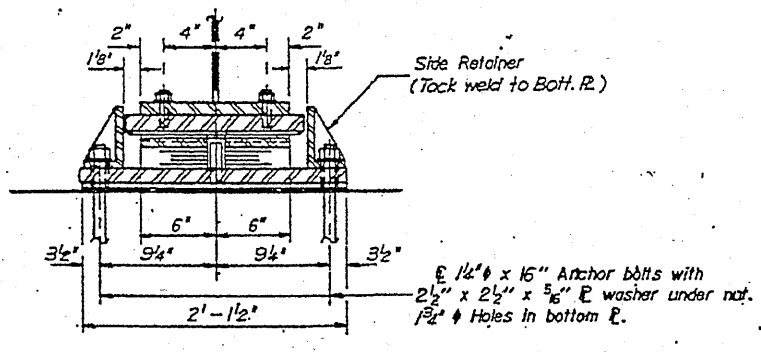


ROUTE FAI 94	SECTION 2010-089-BP	COUNTY COOK	TOTAL SHEETS 35	SHEET NUMBER 30
-----------------	------------------------	----------------	--------------------	--------------------

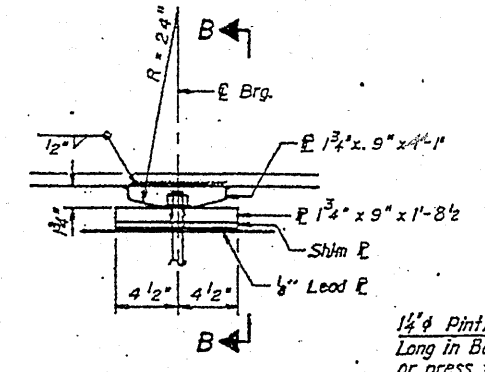
CONTRACT NO. 60L85



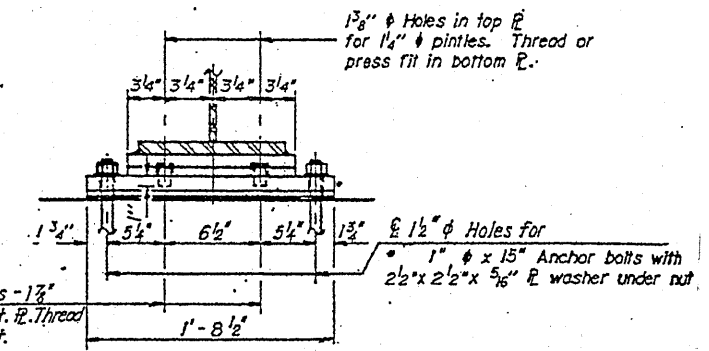
ELEVATION AT PIER NO. 2 - SOUTH BEARING



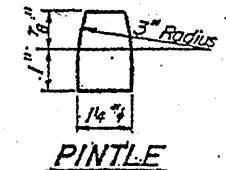
SECTION A-A



ELEVATION AT PIERS 1 & 5

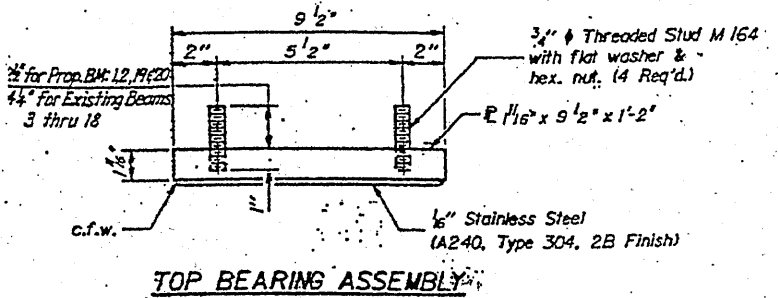


SECTION B-B

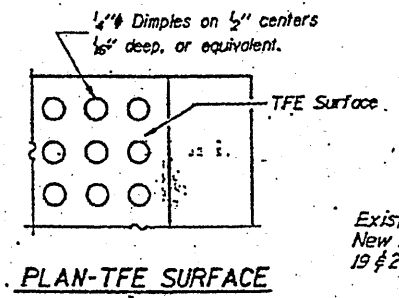


PINTLE

TYPE III TFE ELASTOMERIC EXP. BRG.



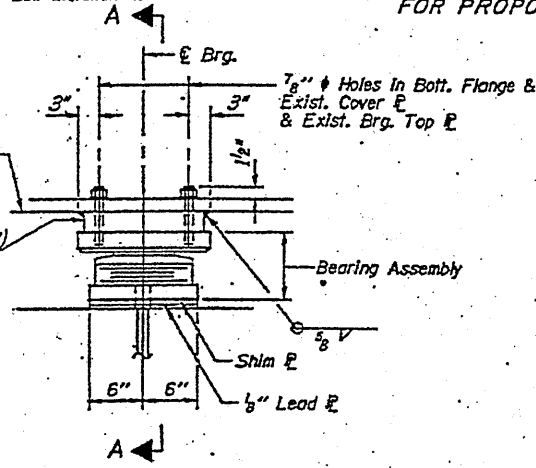
TOP BEARING ASSEMBLY



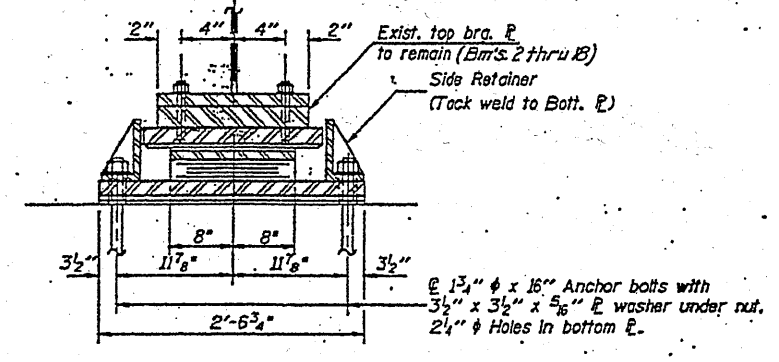
PLAN-TFE SURFACE

* Note: Anchor bolts at fixed bearings may be built into the masonry. See sheet #28 for Anchor Bolt installation.

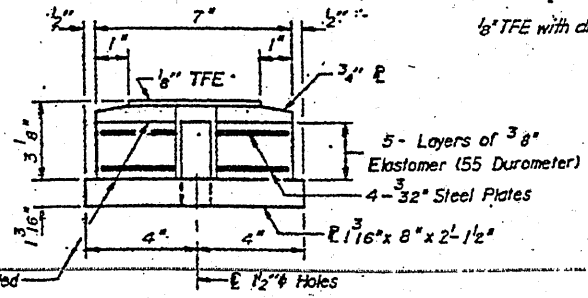
FIXED BEARING FOR PROPOSED BEAMS 1, 2, 19 & 20 8 REQUIRED



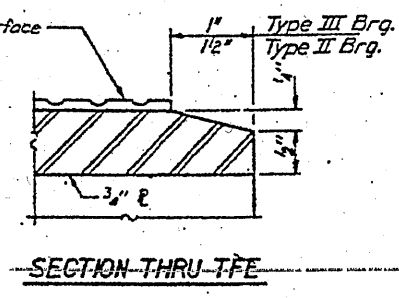
ELEVATION AT PIER



SECTION A-A



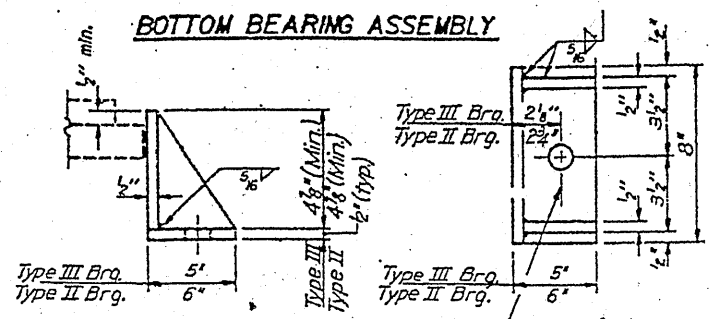
BOTTOM BEARING ASSEMBLY



SECTION THRU TFE

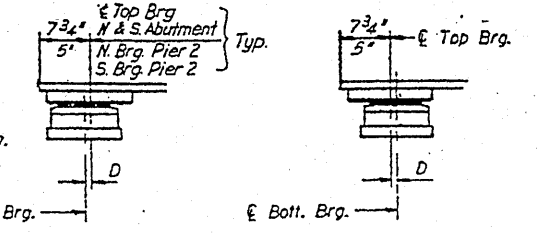
Note: The 1/8\" TFE sheet shall be bonded directly to the top steel plate with a two-component, medium viscosity epoxy resin, conforming to the requirements of the Federal Specification, MMV-A-134, Type I. The bond agent shall be applied on the full area of the contact surfaces.

Bonding of 1/8\" TFE sheet during vulcanizing process will be permitted provided the process and method of adjusting assembly height is approved by the Engineer.



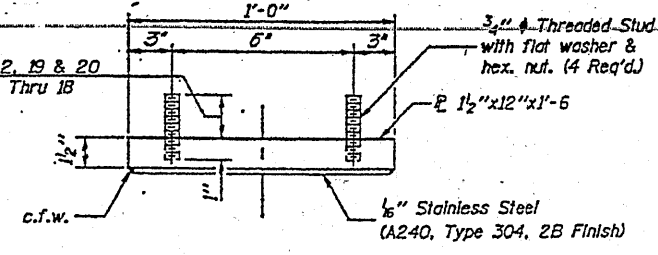
SIDE RETAINER

Equivalent rolled angle with stiffeners will be allowed in lieu of welded plates

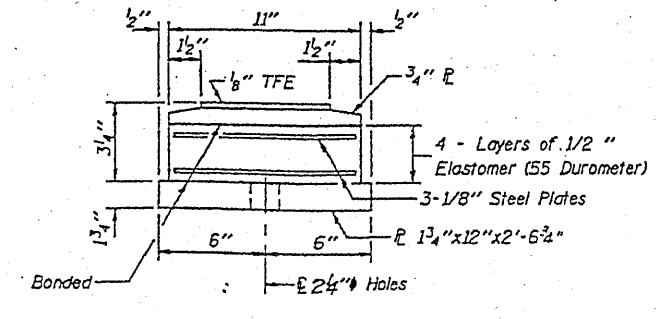


SETTING ANCHOR BOLTS AT EXP. BRG.

TYPE II TFE ELASTOMERIC EXP. BRG. AT PIER 3



TOP BEARING ASSEMBLY



BOTTOM BEARING ASSEMBLY

SHEET 3 OF 4

ILLINOIS DEPARTMENT OF TRANSPORTATION

EXISTING BRIDGE PLAN SN 016-0160 (BRIDGE 7)