

F.A.P. RTE.	SECTION	COUNTY	TOTAL SHEETS	SHEET NO.
303	134(B&B-2)R-1	LAKE	137	23
STA. 25+000 TO STA. 25+098				
FED. ROAD DIST. NO. 1 ILLINOIS FED. AID PROJECT				

CONTRACT NO. 62037

PRE-STAGE I WORK:

1. REMOVE EXISTING SHOULDER AND CURB AND GUTTER STA 25+103 TO STA 25+130.
2. ADD TEMPORARY PAVEMENT, 300mm.

MAJOR WORK STAGE I:

1. TRAFFIC USES SOUTHERN PORTION OF EXISTING BRIDGE.
2. NORTHERN PORTION OF EXISTING BRIDGE SUPER-STRUCTURE IS REMOVED.
3. NORTHERN PORTION OF NEW BRIDGE IS CONSTRUCTED.

NOTES:

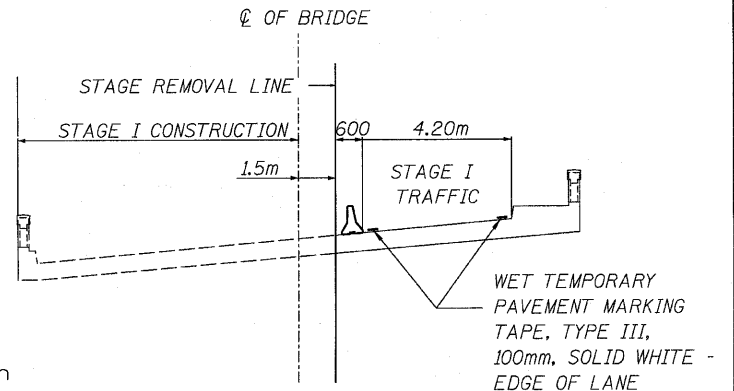
1. LOCATIONS OF ADVANCED WARNING SIGNS AND TEMPORARY CONCRETE BARRIER FOR STAGE I WORK SHALL BE AS SHOWN ON THIS PLAN SHEET. ALL OTHER TRAFFIC CONTROL DEVICES FOR THIS WORK SHALL BE IN ACCORDANCE WITH HIGHWAY STANDARD 701321. WORK SHALL NOT BEGIN UNTIL ALL TRAFFIC CONTROL DEVICES ARE IN PLACE AND APPROVED BY THE ENGINEER.

CONT.:

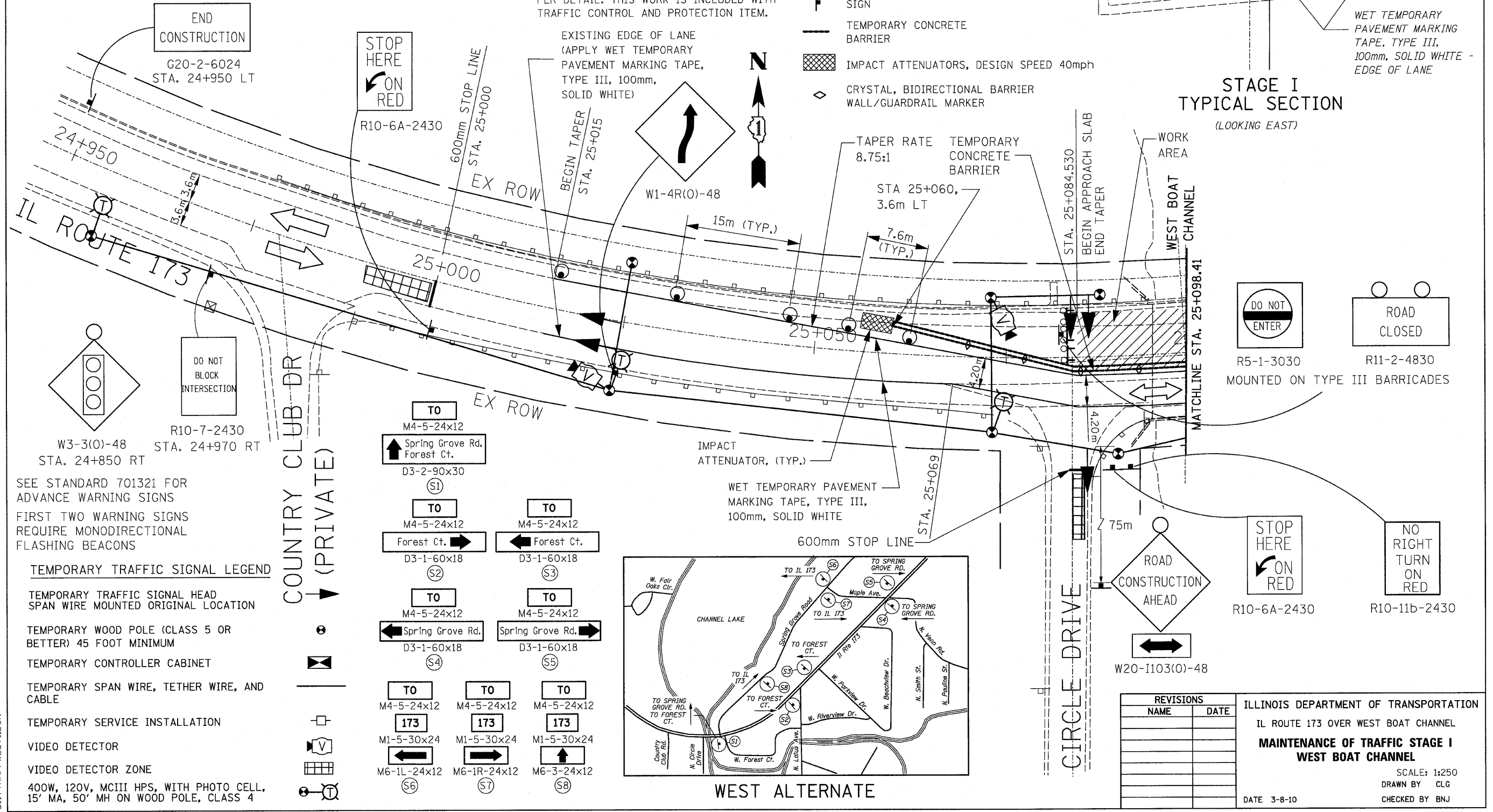
2. THE CONTRACTOR SHALL MAINTAIN ACCESS TO ALL PRIVATE AND COMMERCIAL ENTRANCES AND SIDESTREETS.
3. ALL ADVANCED WARNING SIGNS ON THIS SHEET ARE TO BE POST MOUNTED.
4. THE STATIONING FOR SIGNS AND SIGNALS ARE APPROXIMATE. ADJUST LOCATIONS AS NEEDED TO AVOID SIDEROADS, DRIVEWAYS, & OTHER OBSTACLES.
5. SEE SIGNAL PLANS
6. NUMBER OF TYPE III BARRICADES USED IS AS REQUIRED FOR CLOSURE.
7. PROVIDE AND INSTALL ALTERNATE SIGNING PER DETAIL. THIS WORK IS INCLUDED WITH TRAFFIC CONTROL AND PROTECTION ITEM.

SYMBOLS

- ☉ DRUM WITH STEADY BURNING MONODIRECTIONAL LIGHT. DRUMS ON TANGENT SHALL BE AT 15m CENTERS. DRUMS ON TAPER AND ON RADIUS RETURNS SHALL BE AT 7.6m CENTERS.
- ▨ WORK AREA
- ▩ DOUBLE VERTICAL PANEL
- ⚡ TYPE III BARRICADE WITH 2 FLASHING MONODIRECTIONAL LIGHTS EACH
- ⊥ SIGN
- TEMPORARY CONCRETE BARRIER
- ▩ IMPACT ATTENUATORS, DESIGN SPEED 40mph
- ◇ CRYSTAL, BIDIRECTIONAL BARRIER WALL/GUARDRAIL MARKER



STAGE I TYPICAL SECTION
(LOOKING EAST)

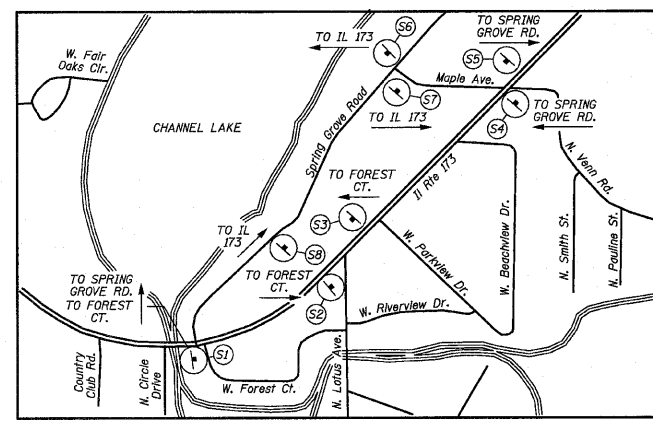
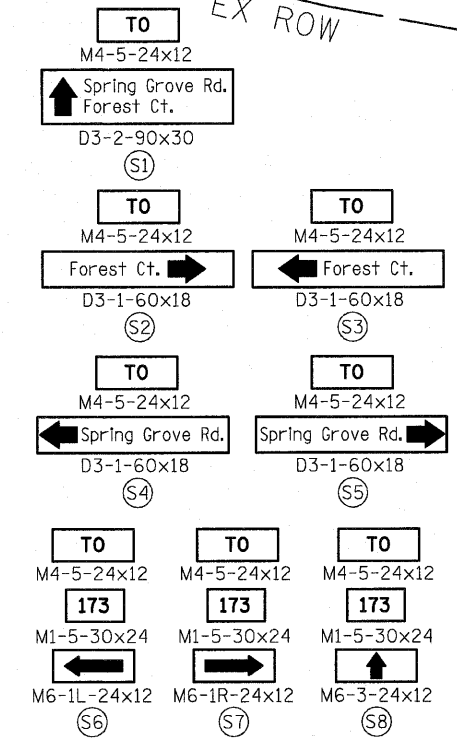


SEE STANDARD 701321 FOR ADVANCE WARNING SIGNS
FIRST TWO WARNING SIGNS REQUIRE MONODIRECTIONAL FLASHING BEACONS

TEMPORARY TRAFFIC SIGNAL LEGEND

- TEMPORARY TRAFFIC SIGNAL HEAD SPAN WIRE MOUNTED ORIGINAL LOCATION
- TEMPORARY WOOD POLE (CLASS 5 OR BETTER) 45 FOOT MINIMUM
- TEMPORARY CONTROLLER CABINET
- TEMPORARY SPAN WIRE, TETHER WIRE, AND CABLE
- TEMPORARY SERVICE INSTALLATION
- VIDEO DETECTOR
- VIDEO DETECTOR ZONE
- 400W, 120V, MCIII HPS, WITH PHOTO CELL, 15' MA, 50' MH ON WOOD POLE, CLASS 4

COUNTRY CLUB DR (PRIVATE)



WEST ALTERNATE

REVISIONS	
NAME	DATE

ILLINOIS DEPARTMENT OF TRANSPORTATION
IL ROUTE 173 OVER WEST BOAT CHANNEL
MAINTENANCE OF TRAFFIC STAGE I WEST BOAT CHANNEL
SCALE: 1:250
DRAWN BY CLG
CHECKED BY BNU
DATE 3-8-10

3117TRAFFWEST1.DGN