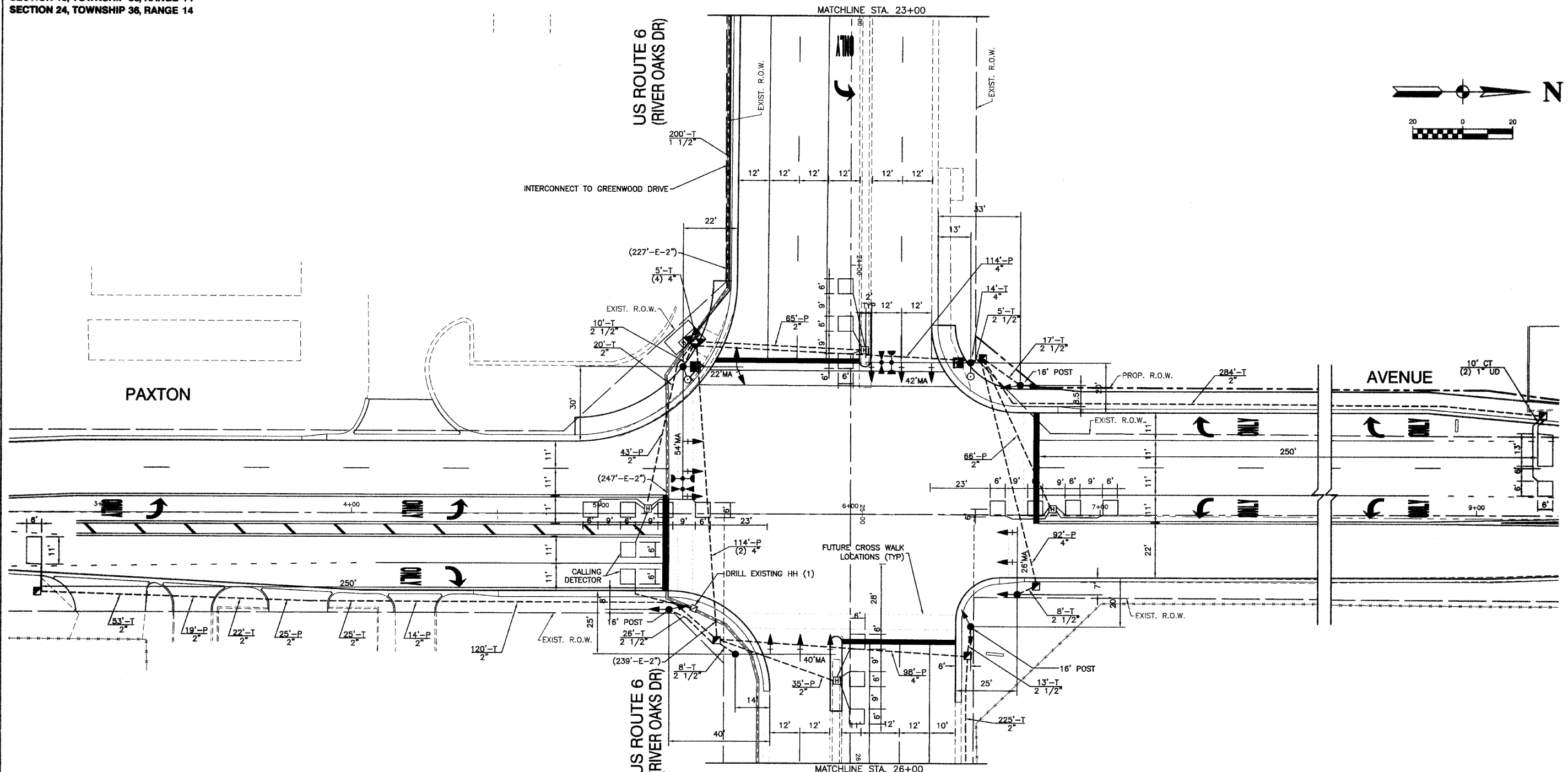
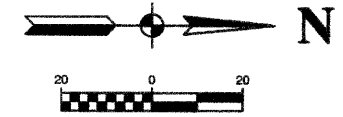


SECTION 13, TOWNSHIP 36, RANGE 14
SECTION 24, TOWNSHIP 36, RANGE 14



TRAFFIC SIGNAL LEGEND

PROPOSED		EXISTING		PROPOSED		EXISTING	
CONTROLLER			COMMON TRENCH	CT	SIGNAL HEAD OPTICALLY PROGRAMMED		
SERVICE INSTALLATION			HANDHOLE		CONDUIT SPLICE		
SIGNAL HEAD			HEAVY DUTY HANDHOLE		WOOD POLE		
SIGNAL HEAD WITH BACKPLATE			DOUBLE HANDHOLE		RACEWAY FOR MAGNETIC DETECTOR, TYPE I OR TYPE II		
SIGNAL HEAD, PEDESTRIAN			G.S. CONDUIT IN GROUND		VEHICLE DETECTOR, NON COMPENSATED MAGNETIC TYPE		
SIGNAL POST			PEDESTRIAN PUSHBUTTON DETECTOR		RAILROAD CONTROL CABINET		
MAST ARM ASSEMBLY AND POLE, STEEL			DETECTOR LOOP		TELEPHONE CONNECTION		
MAST ARM ASSEMBLY AND POLE, ALUMINUM			CAST IRON JUNCTION BOX		ILLUMINATED SIGN, FIBER OPTIC "NO LEFT TURN"		
COMBINATION MAST ARM ASSEMBLY AND POLE, STEEL WITH LUMINAIRE			EMERGENCY VEHICLE SYSTEM DETECTOR		ILLUMINATED SIGN, FIBER OPTIC "NO RIGHT TURN"		
UNIT DUCT	UD		CONFIRMATION BEACON				
UNINTERRUPTIBLE POWER SUPPLY							

RESTORATION OF WORK AREA, RESTORATION OF THE TRAFFIC SIGNAL WORK AREA SHALL BE INCIDENTAL TO THE RELATED PAY ITEM SUCH AS FOUNDATION, CONDUIT, HANDHOLE, TRENCH AND BACKFILL, ETC., AND NO EXTRA COMPENSATION SHALL BE ALLOWED. ALL ROADWAY SURFACES SUCH AS SHOULDERS, MEDIANS, SIDEWALKS, PAVEMENT, ETC., SHALL BE REPLACED IN KIND. ALL DAMAGE TO MOWED LAWNS SHALL BE REPLACED WITH AN APPROVED SOD, AND ALL DAMAGE TO UNMOWED FIELDS SHALL BE SEEDING IN ACCORDANCE WITH STANDARD SPECIFICATIONS 252 AND 250 RESPECTIVELY.

THE TRAFFIC CONTROL EQUIPMENT FOR THIS PROJECT SHALL BE ECONOLITE TO MATCH EXISTING ADJACENT SYSTEM.

FILE NAME = 05328-SIGNL-01 - T501	USER NAME =	DESIGNED - MS	REVISD - 02-04-10	STATE OF ILLINOIS DEPARTMENT OF TRANSPORTATION	US ROUTE 6 (RIVER OAKS DRIVE) AT PAXTON AVENUE INTERSECTION IMPROVEMENT TRAFFIC SIGNAL INSTALLATION			F.A.P. RTE. 351	SECTION 06-00139-00-CH	COUNTY COOK	TOTAL SHEETS 044	SHEET NO. 022
	PLOT SCALE =	CHECKED - MS	REVISD -		SCALE: 1"=20'	SHEET NO. 022 OF 044 SHEETS	STA. TO STA.	CONTRACT NO. 63266				
	PLOT DATE = 01-25-10	DRAWN - SLG	REVISD -		FED. ROAD DIST. NO. 1 ILLINOIS FED. AID PROJECT HD-M-9003(256)							
		CHECKED - AG	REVISD -									