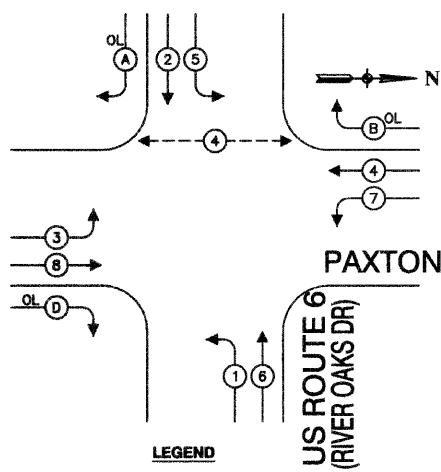
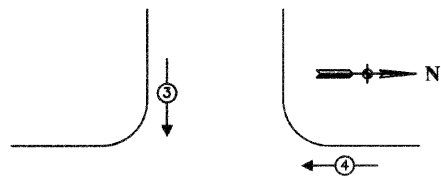


SECTION 13, TOWNSHIP 36, RANGE 14
SECTION 24, TOWNSHIP 36, RANGE 14

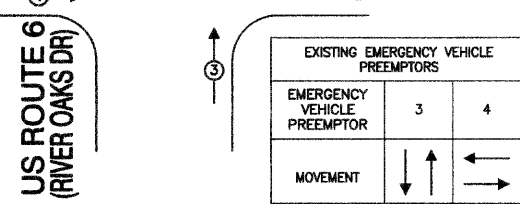
PROPOSED CONTROLLER SEQUENCE



PHASE DESIGNATION DIAGRAM



PAXTON AVE.



EMERGENCY VEHICLE PREEMPTION SEQUENCE

NO.	ITEM DESCRIPTION	UNIT	TOTAL
1	SIGN PANEL - TYPE 1	SQ FT	15
2	SIGN PANEL - TYPE 2	SQ FT	36
3	ELECTRIC SERVICE INSTALLATION	EACH	1
4	CONDUIT IN TRENCH, 1-1/2" GALVANIZED STEEL	FOOT	200
5	CONDUIT IN TRENCH, 2" GALVANIZED STEEL	FOOT	1053
6	CONDUIT IN TRENCH, 2-1/2" GALVANIZED STEEL	FOOT	61
7	CONDUIT IN TRENCH, 4" GALVANIZED STEEL	FOOT	101
8	CONDUIT PUSHED, 2" GALVANIZED STEEL	FOOT	139
9	CONDUIT PUSHED, 4" GALVANIZED STEEL	FOOT	720
10	HANDHOLE	EACH	7
11	HEAVY-DUTY HANDHOLE	EACH	4
12	DOUBLE HANDHOLE	EACH	1
13	TRENCH AND BACKFILL FOR ELECTRICAL WORK	FOOT	1416
14	MAINTENANCE OF EXISTING TRAFFIC SIGNAL INSTALLATION	EACH	3
15	FULL-ACTUATED CONTROLLER AND TYPE IV CABINET, SPECIAL	EACH	1
16	ELECTRIC CABLE IN TRENCH, LEAD-IN, NO. 14 1 PAIR	FOOT	2309
17	ELECTRIC CABLE IN CONDUIT, SIGNAL NO. 14 2C	FOOT	194
18	ELECTRIC CABLE IN CONDUIT, SIGNAL NO. 14 3C	FOOT	505
19	ELECTRIC CABLE IN CONDUIT, SIGNAL NO. 14 5C	FOOT	1387
20	ELECTRIC CABLE IN CONDUIT, SIGNAL NO. 14 7C	FOOT	2627
21	TRAFFIC SIGNAL POST, GALVANIZED STEEL, 16 FT	EACH	3
22	STEEL MAST ARM ASSEMBLY AND POLE, 26 FT	EACH	1
23	STEEL MAST ARM ASSEMBLY AND POLE, 40 FT	EACH	1
24	STEEL MAST ARM ASSEMBLY AND POLE, 42 FT	EACH	1
25	CONCRETE FOUNDATION, TYPE A	FOOT	12
26	CONCRETE FOUNDATION, TYPE C	FOOT	4
27	CONCRETE FOUNDATION, TYPE E 30-INCH DIAMETER	FOOT	10
28	CONCRETE FOUNDATION, TYPE E 36-INCH DIAMETER	FOOT	30
29	CONCRETE FOUNDATION, TYPE E 42-INCH DIAMETER	FOOT	21
30	SIGNAL HEAD, LED, 1-FACE, 3-SECTION, MAST-ARM MOUNTED	EACH	5
31	SIGNAL HEAD, LED, 1-FACE, 5-SECTION, MAST-ARM MOUNTED	EACH	8
32	PEDESTRIAN SIGNAL HEAD, LED, 1-FACE, BRACKET MOUNTED WITH COUNTDOWN TIMER	EACH	2
33	TRAFFIC SIGNAL BACKPLATE, LOUVERED	EACH	13
34	DETECTOR LOOP, TYPE 1	FOOT	1000
35	PEDESTRIAN PUSH BUTTON	EACH	2
36	TEMPORARY TRAFFIC SIGNAL INSTALLATION	EACH	1
37	RELOCATE EXISTING EMERGENCY VEHICLE PRIORITY SYSTEM, DETECTOR UNIT	EACH	2
38	RELOCATE EXISTING EMERGENCY VEHICLE PRIORITY SYSTEM, PHASING UNIT	EACH	1
39	REMOVE ELECTRIC CABLE FROM CONDUIT	FOOT	4300
40	REMOVE AND REINSTALL ELECTRIC CABLE FROM CONDUIT	FOOT	1264
41	REMOVE EXISTING TRAFFIC SIGNAL EQUIPMENT	LSUM	1
42	REMOVE EXISTING HANDHOLE	EACH	7
43	REMOVE EXISTING CONCRETE FOUNDATION	EACH	6
44	SIGNAL HEAD, LED, 2-FACE, 1-3 SECTION, 1-5 SECTION, BRACKET MOUNTED	EACH	1
45	SIGNAL HEAD, LED, 2-FACE, 5-SECTION, BRACKET MOUNTED	EACH	2
46	SIGNAL HEAD, LED, 1-FACE, 5-SECTION, BRACKET MOUNTED	EACH	1
47	ELECTRIC CABLE IN CONDUIT, TRACER, NO. 14 1C	FOOT	2500
48	RE-OPTIMIZE TRAFFIC SIGNAL SYSTEM LEVEL 2	EACH	1
49	UNINTERRUPTIBLE POWER SUPPLY	EACH	1
50	FIBER OPTIC CABLE IN CONDUIT, NO. 62.5/125, 2MM12F & SM12F	FOOT	2500
51	ELECTRIC CABLE IN CONDUIT, GROUNDING, NO. 6 1C	FOOT	500
52	ELECTRIC CABLE IN CONDUIT, NO. 20 3C, TWISTED, SHIELDED	FOOT	307
53	STEEL MAST ARM ASSEMBLY & POLE WITH DUAL MAST ARMS, 22' & 54'	EACH	1
54	DRILL EXISTING HANDHOLE	EACH	1

FOUNDATION (DEPTH)	FT. (m)	CABLE SLACK	FT. (m)	VERTICAL	FT. (m)
TYPE A - POST	4 (1.2)	HANDHOLE	6.5 (2.0)	ALL FOUNDATIONS	3.5 (1.0)
D - CONTROLLER	4 (1.2)	DOUBLE HANDHOLE	13 (4.0)	MAST ARM (L) POLE	20'+L-2=
E - M. ARM POLE	4 (1.2)	SIGNAL POST	2 (1.0)	(8m+L-0.8m)=	
30" (750mm)	15 (4.6)	CONTROLLER CAB.	1 (0.5)	BRACKET MOUNTED	13 (4.0)
30" (750mm)	15 (4.6)	FIBER OPTIC	13 (4.0)	PED. PUSHBUTTON	4 (1.2)
36" (900mm)	18 (4.8)	ELECTRIC SERVICE	1 (0.5)	ELECTRIC SERVICE	13.5 (4.1)
		GROUND CABLE	1 (0.5)	SERVICE TO GROUND	13.5 (4.1)
				POST MOUNTED	6 (1.8)

I.D.O.T.
TRAFFIC SIGNAL INSTALLATION
ELECTRICAL SERVICE REQUIREMENTS

TYPE	NO. LAMPS	INCAND.	LED	% OPERATION	TOTAL WATTAGE
SIGNAL (RED)	20	17	0.50		170
SIGNAL (YELLOW)	20	25	0.25		125
SIGNAL (GREEN)	20	15	0.25		75
ARROW	28	12	0.10		34
PED SIGNAL	2	25	1.00		50
CONTROLLER	1	100	1.00		100
FLASHER	1	150	1.00		
TOTAL					554

ENERGY COSTS TO: CITY OF CALUMET CITY

ENERGY SUPPLY: CONTACT: GREG TRIEMSTRA
PHONE: (708) 235-2331
COMPANY: COM ED

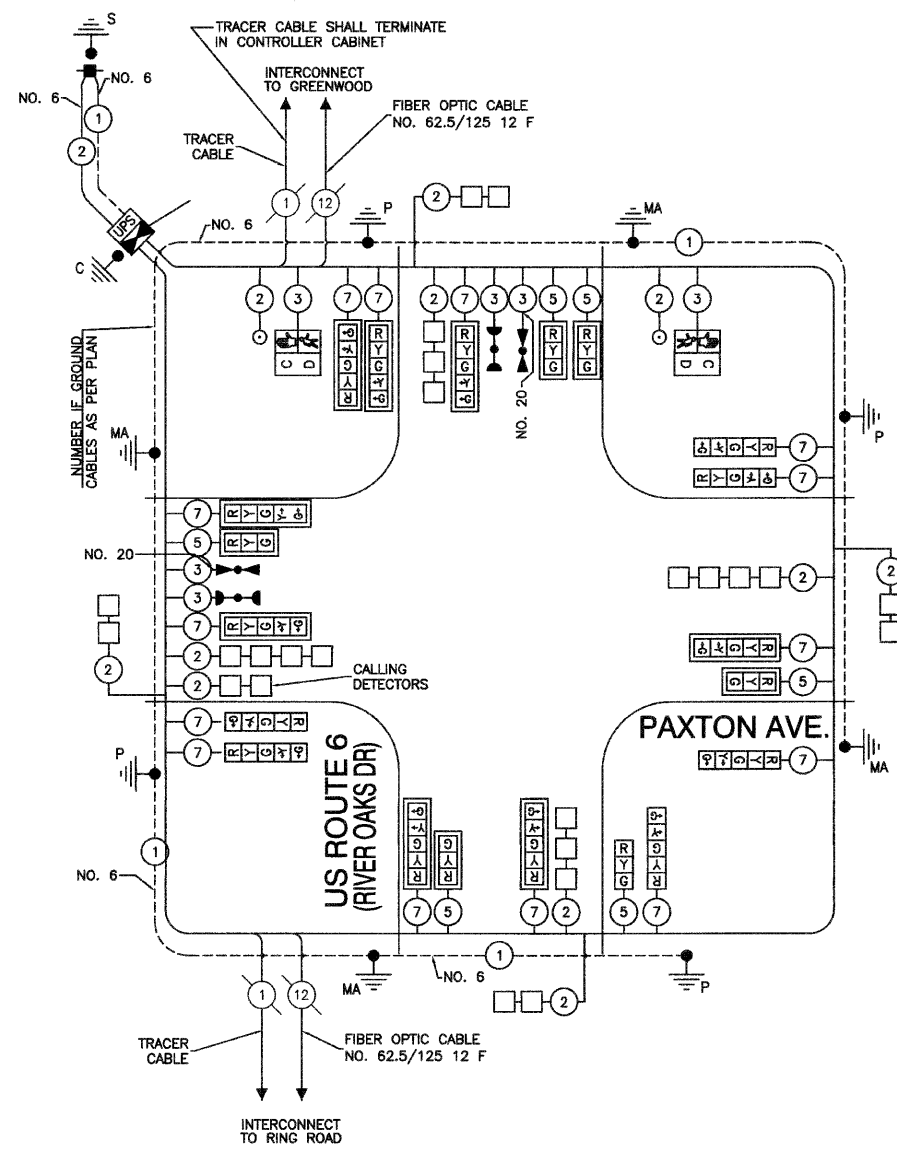
FILE NAME = 08228-SGNL-01 - T303	USER NAME =	DESIGNED = MS	REVISED = 02-04-10
		CHECKED = MS	REVISED =
	PLOT SCALE =	DRAWN = SLG	REVISED =
	PLOT DATE = 01-25-10	CHECKED = AG	REVISED =

STATE OF ILLINOIS
DEPARTMENT OF TRANSPORTATION

US ROUTE 6 (RIVER OAKS DRIVE) AT PAXTON AVENUE INTERSECTION IMPROVEMENT
TRAFFIC SIGNAL INSTALLATION CABLE PLAN, PHASE DESIGNATION DIAGRAM
EMERGENCY VEHICLE PREEMPTION SEQUENCE AND QUANTITIES

SCALE: NONE SHEET NO. 024 OF 044 SHEETS STA. TO STA.

F.A.P. RTE.	SECTION	COUNTY	TOTAL SHEETS	SHEET NO.
351	08-00139-00-CH	COOK	044	024
CONTRACT NO. 63268				
FED. ROAD DIST. NO. 1 ILLINOIS FED. AID PROJECT HD-M-9003(258)				



CABLE PLAN
NOT TO SCALE

CABLE PLAN LEGEND

EXISTING	PROPOSED	DESCRIPTION
G	G	8" TRAFFIC SIGNAL SECTION
R	R	12" TRAFFIC SIGNAL SECTION
W	W	12" PEDESTRIAN SIGNAL SECTION
C	C	12" PEDESTRIAN SIGNAL SECTION
A	A	12" PEDESTRIAN SIGNAL SECTION
D	D	12" PEDESTRIAN SIGNAL SECTION
[Symbol]	[Symbol]	CONTROLLER CABINET
[Symbol]	[Symbol]	SERVICE INSTALLATION
[Symbol]	[Symbol]	TELEPHONE CONNECTION
[Symbol]	[Symbol]	MAGNETIC DETECTOR
[Symbol]	[Symbol]	EMERGENCY VEHICLE LIGHT DETECTOR
[Symbol]	[Symbol]	CONFIRMATION BEACON
[Symbol]	[Symbol]	PUSHBUTTON DETECTOR
[Symbol]	[Symbol]	VEHICLE DETECTOR, INDUCTION LOOP
[Symbol]	[Symbol]	DENOTES NUMBER OF CONDUCTORS. ALL CABLE NO. 14 EXCEPT AS INDICATED. ALL LOOP DETECTOR CABLE TO BE SHIELDED.
[Symbol]	[Symbol]	SIGNAL FACE WITH BACKPLATE
[Symbol]	[Symbol]	"P" INDICATES PROGRAMMED HEAD
[Symbol]	[Symbol]	RAILROAD CONTROL CABINET
[Symbol]	[Symbol]	ILLUMINATED SIGN, FIBER OPTIC "NO LEFT TURN"
[Symbol]	[Symbol]	ILLUMINATED SIGN, FIBER OPTIC "NO RIGHT TURN"
[Symbol]	[Symbol]	GROUND ROD AT HANDHOLE, DOUBLE HANDHOLE, OR CONTROLLER
[Symbol]	[Symbol]	GROUND ROD AT POST OR MAST ARM POLE
[Symbol]	[Symbol]	GROUND ROD AT ELECTRIC SERVICE INSTALLATION
[Symbol]	[Symbol]	GROUND CABLE IN CONDUIT NO. 6 SOLID COPPER (GREEN)
[Symbol]	[Symbol]	FIBER OPTIC CABLE IN CONDUIT NO. 62.5/125 2-MM12F & SM12F
[Symbol]	[Symbol]	UNINTERRUPTIBLE POWER SUPPLY