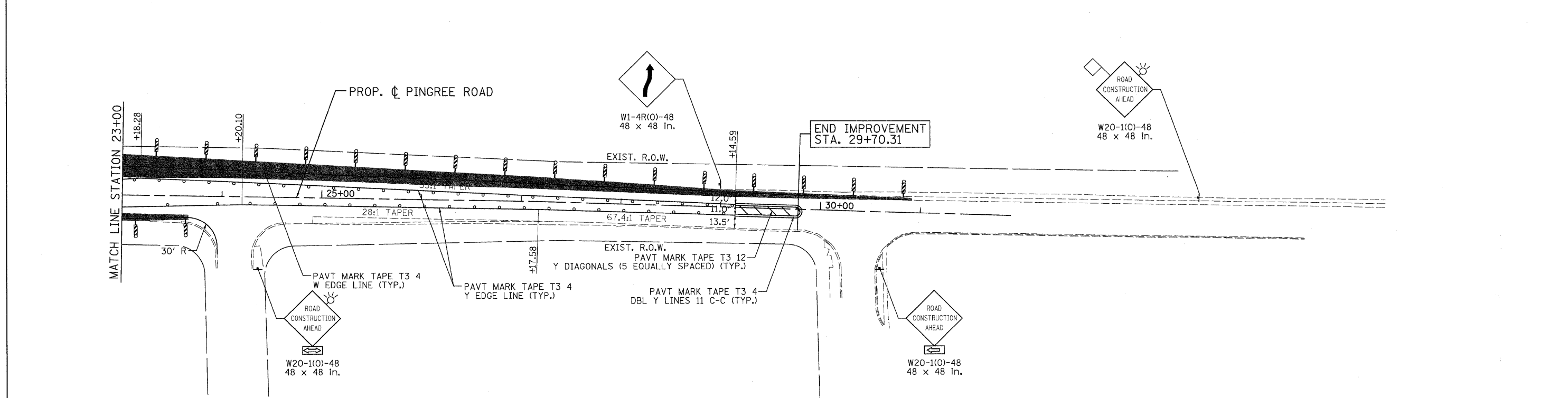


LEGEND

TEMPORARY PAVEMENT	TYPE II BARRICADES OR DRUMS WITH STEADY BURNING LIGHTS @ 50 FT CENTERS ALONG ROADWAY (TANGENT), 25 FT CENTERS ALONG TAPERS AND 12 FT CENTERS ALONG RADII	VERTICAL PANEL WITH STEADY BURNING LIGHT 50 FT C-C
WORK ZONE	TYPE III BARRICADES WITH FLASHING LIGHTS	
DIRECTION OF TRAFFIC		



PATRICK ENGINEERING INC. LISLE, ILLINOIS	USER NAME = Rduy_Lisle	DESIGNED - MJV	REVISED -	MCHENRY COUNTY DIVISION OF TRANSPORTATION	RAKOW ROAD FROM ACKMAN ROAD TO ILLINOIS ROUTE 31 SUGGESTED STAGING OF CONSTRUCTION & TRAFFIC CONTROL PINGREE ROAD STAGE 1B	F.A.P. RTE. 0336	SECTION 05-00308-00-WR	COUNTY MCHENRY	TOTAL SHEETS 606	SHEET NO. 100
	PLOT CONFIG = PDF(Grey, Large).plt	DRAWN - EJB	REVISED -			SCALE: 1"=50'	SHEET NO. MOT 54 OF 100	STA. 18+65.38 TO STA. 29+70.31	FED. ROAD DIST. NO. ILLINOIS FED. AID PROJECT	CONTRACT NO. 63398
	PLOT SCALE = 1:50	CHECKED - JAH	REVISED -							
	PLOT DATE = 7/29/2010	DATE - 8/2/2010	REVISED -							

Q:\MCDOT\20950_001\Drawings\RDW\shhs\MOT\20_S.MOT01(B)_Pingree.dgn