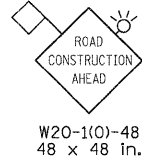
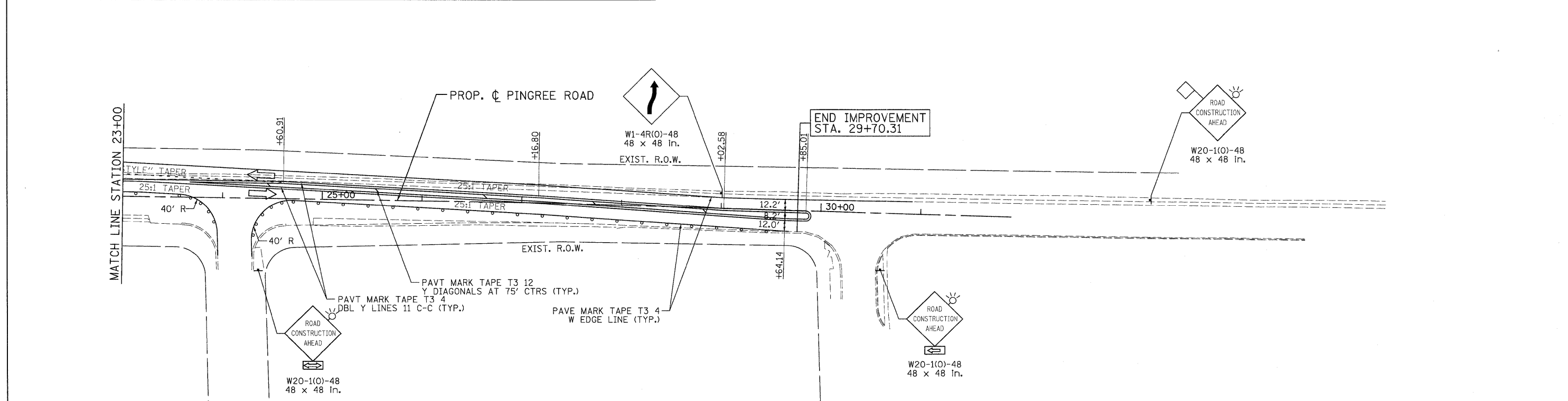


ADVANCE SIGNING DETAIL:



LEGEND

TEMPORARY PAVEMENT	TYPE II BARRICADES OR DRUMS WITH STEADY BURNING LIGHTS @ 50 FT CENTERS ALONG ROADWAY (TANGENT), 25 FT CENTERS ALONG TAPERS AND 12 FT CENTERS ALONG RADII	VERTICAL PANEL WITH STEADY BURNING LIGHT 50 FT C-C
WORK ZONE	TYPE III BARRICADES WITH FLASHING LIGHTS	
DIRECTION OF TRAFFIC		



<p>PATRICK ENGINEERING INC. LISLE, ILLINOIS</p>	USER NAME = Rdwy_Lisle PLOT CONFID = PDF(Grey, Large).plt PLOT SCALE = 1:50 PLOT DATE = 7/29/2010	DESIGNED - MJV DRAWN - EJB CHECKED - JAH DATE - 8/2/2010	REVISED - REVISED - REVISED - REVISED -	<p>MCHENRY COUNTY DIVISION OF TRANSPORTATION</p>	<p>RAKOW ROAD FROM ACKMAN ROAD TO ILLINOIS ROUTE 31 SUGGESTED STAGING OF CONSTRUCTION & TRAFFIC CONTROL PINGREE ROAD STAGE 1C</p>	F.A.P. RTE. = 0336 SECTION = 05-00308-00-WR COUNTY = MCHENRY CONTRACT NO. = 63398	TOTAL SHEETS = 606 SHEET NO. = 101
	SCALE: 1"=50' SHEET NO. MOT 55 OF 100 STA. 18+65.38 TO STA. 29+70.31		FED. ROAD DIST. NO. ILLINOIS FED. AID PROJECT				

G:\MCDOT\2010\Drawings\RDWY\shets\MOT\21.S.MOT\1(C).Pingree.dgn