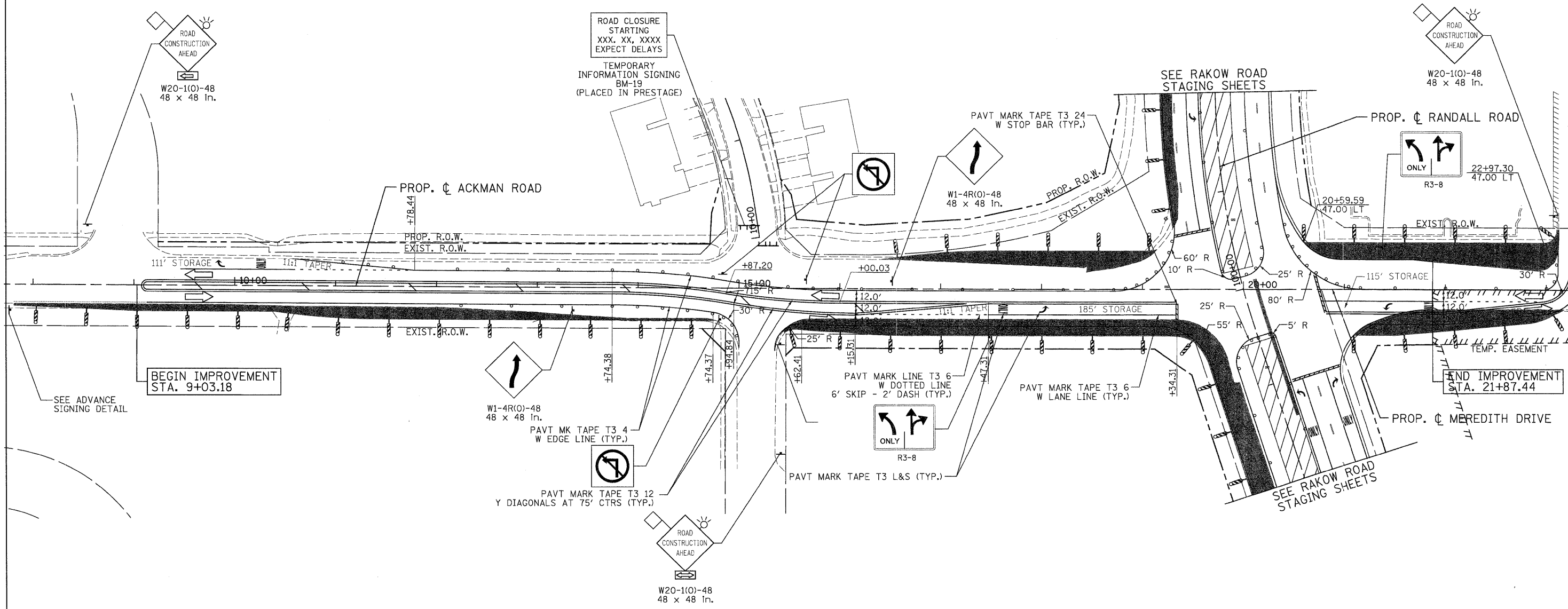


ADVANCE SIGNING DETAIL:



W20-1(O)-48
48 x 48 in.



LEGEND

TEMPORARY PAVEMENT	TYPE II BARRICADES OR DRUMS WITH STEADY BURNING LIGHTS @ 50 FT CENTERS ALONG ROADWAY (TANGENT), 25 FT CENTERS ALONG TAPERS AND 12 FT CENTERS ALONG RADII	VERTICAL PANEL WITH STEADY BURNING LIGHT 50 FT C-C
WORK ZONE	TYPE III BARRICADES WITH FLASHING LIGHTS	
DIRECTION OF TRAFFIC		



USER NAME = Rdwy_Lisle
 PLOT CONFIG = PDF(Grey_Large).plt
 PLOT SCALE = 1:50
 PLOT DATE = 7/29/2010

DESIGNED - MJV
 DRAWN - EJB
 CHECKED - JAH
 DATE - 8/2/2010

REVISED -
 REVISED -
 REVISED -
 REVISED -



**MCHENRY COUNTY
DIVISION OF TRANSPORTATION**

**RAKOW ROAD FROM ACKMAN ROAD TO ILLINOIS ROUTE 31
SUGGESTED STAGING OF CONSTRUCTION & TRAFFIC CONTROL
ACKMAN ROAD STAGE 1D1**

SCALE: 1"=50' SHEET NO. MOT 60 OF 100 STA. 9+03.18 TO STA. 21+87.44

F.A.P. RTE. 0336	SECTION 05-00308-00-WR	COUNTY MCHENRY	TOTAL SHEETS 606	SHEET NO. 106
FED. ROAD DIST. NO. ILLINOIS FED. AID PROJECT			CONTRACT NO. 63398	

G:\MCDOT\20950_001\Drawings\RDWY\shs\MOT\25_S\MOT2(01)_AckmanRd.dgn