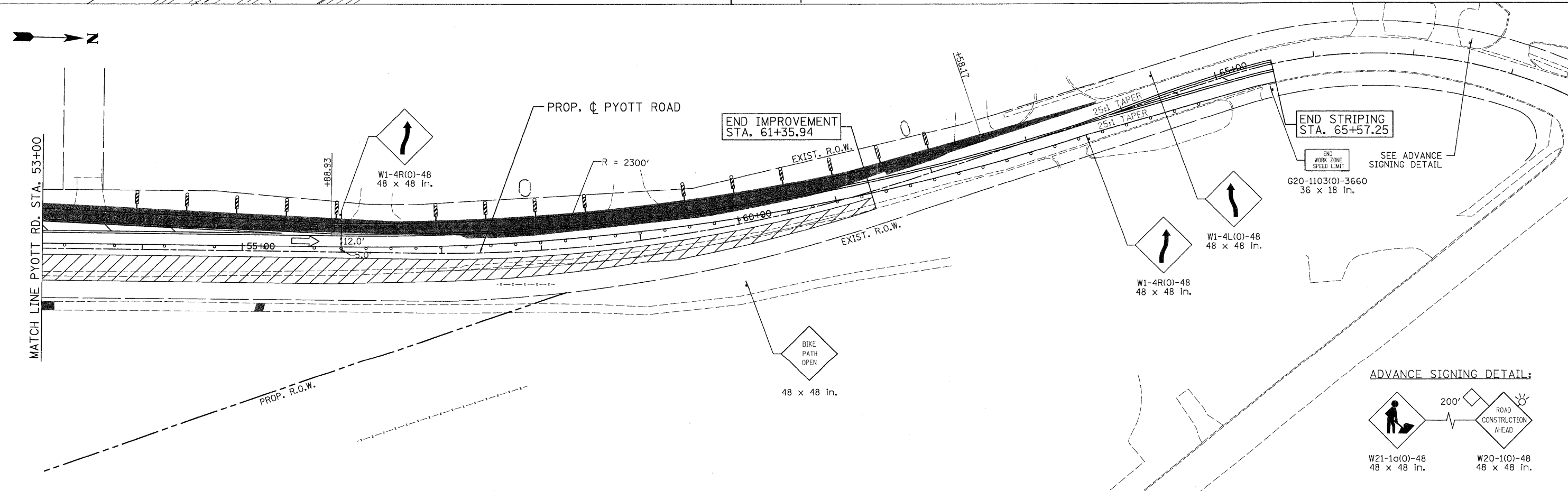
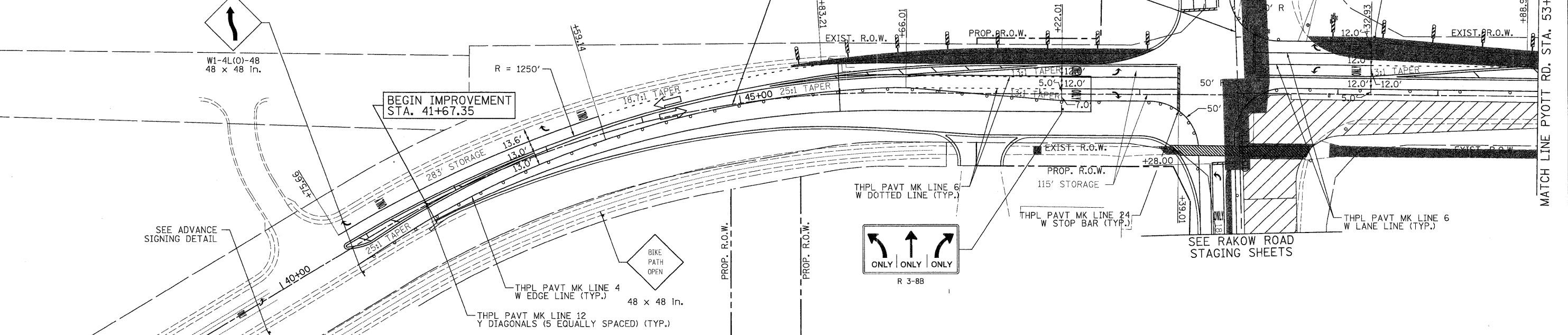


LEGEND

- TEMPORARY PAVEMENT
- WORK ZONE
- DIRECTION OF TRAFFIC
- TYPE II BARRICADES OR DRUMS WITH STEADY BURNING LIGHTS @ 50 FT CENTERS ALONG ROADWAY (TANGENT), 25 FT CENTERS ALONG TAPERS AND 12 FT CENTERS ALONG RADII
- VERTICAL PANEL WITH STEADY BURNING LIGHT 50 FT C-C
- TYPE III BARRICADES WITH FLASHING LIGHTS

NOTES:

1. EXISTING BIKE PATH MUST REMAIN OPEN AT ALL TIMES WHILE THE PROPOSED BIKE PATH AND BRIDGE ARE BEING CONSTRUCTED
2. TYPE II BARRICADES WITH LIGHTS NEED TO BE INSTALLED ON BOTH SIDES OF THE TEMPORARY BIKE PATH THROUGH THE WORK ZONE.



 PATRICK ENGINEERING INC. LISLE, ILLINOIS	USER NAME = Rdwy_Lisle	DESIGNED - MJV	REVISED -	 MCHENRY COUNTY DIVISION OF TRANSPORTATION	RAKOW ROAD FROM ACKMAN ROAD TO ILLINOIS ROUTE 31 SUGGESTED STAGING OF CONSTRUCTION & TRAFFIC CONTROL PYOTT ROAD STAGE 2A	F.A.P. RTE. 0336	SECTION 05-00308-00-WR	COUNTY MCHENRY	TOTAL SHEETS 606	SHEET NO. 127
	PLOT CONFIG = PDF(Grey_Large).plt	DRAWN - EJB	REVISED -			SCALE: 1"=50'	SHEET NO. MOT 81 OF 100	STA. 41+67.35 TO STA. 65+57.25	FED. ROAD DIST. NO. ILLINOIS FED. AID PROJECT	CONTRACT NO. 63398
PLOT SCALE = 1:50	CHECKED - JAH	REVISED -								
PLOT DATE = 7/29/2010	DATE - 8/2/2010	REVISED -								

G:\MCDOT\22950_001\Drawings\RDWY\shhs\MOT\43_S.MOT\02(A)_Pyott.dgn